

STATE OF ILLINOIS  
DEPARTMENT OF TRANSPORTATION

F.A.S. RTE.	SECTION	COUNTY	TOTAL SHEETS	SHEET NO.
1907	D9 Bridge Overlay 2026-6	Alexander	23	1
		ILLINOIS	CONTRACT NO. 78B45	

D-99-054-25



FOR INDEX OF SHEETS, SEE SHEET NO. 3

FOR SUMMARY OF QUANTITIES, SEE SHEET NO. 4-6

**TRAFFIC DATA**

STRUCTURE NO. 002-0033  
2026 ADT = 670  
7.47% Trucks

STRUCTURE NO. 002-0035  
2026 ADT = 1,180  
7.63% Trucks

**TOWNSHIPS**

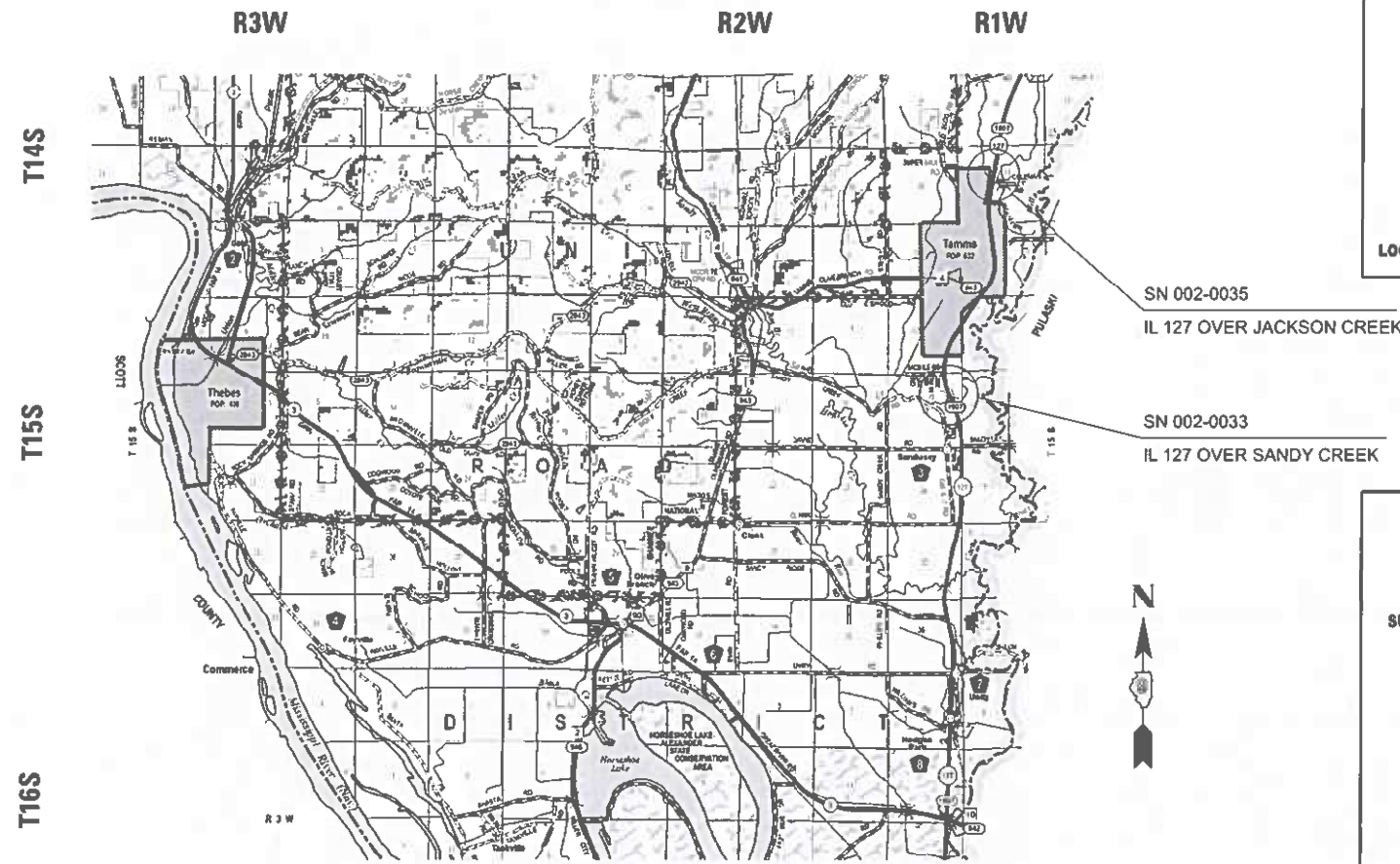
STRUCTURE NO. 002-0033  
TAMMS

STRUCTURE NO. 002-0035  
SANDUSKY

**PROPOSED  
HIGHWAY PLANS**

FAS ROUTE 1907 (IL 127)  
SECTION D9 BRIDGE OVERLAY 2026-6  
PROJECT STP-3R1H(320)  
BRIDGE REPAIR  
ALEXANDER COUNTY

C-99-087-25



DESIGN DESIGNATION : N/A

COORDINATE SYSTEM : N/A

POSTED SPEED : 55 MPH



FULL SIZE PLANS HAVE BEEN PREPARED USING STANDARD ENGINEERING SCALES. REDUCED SIZED PLANS WILL NOT CONFORM TO STANDARD SCALES. IN MAKING MEASUREMENTS ON REDUCED PLANS, THE ABOVE SCALES MAY BE USED.

J.U.L.I.E.  
JOINT UTILITY LOCATION INFORMATION FOR EXCAVATION  
1-800-892-0123  
OR 811

PROJECT ENGINEER EHREN KIRBY  
PROJECT MANAGER NATHANIEL MORRIS

CONTRACT NO. 78B45

GROSS LENGTH = 508.83 FT. = 0.096 MILE

STATE OF ILLINOIS  
DEPARTMENT OF TRANSPORTATION

SUBMITTED Jan 21 2026  
Lisa S. Remington  
REGIONAL ENGINEER

March 20 2026  
See A. E. T.  
ENGINEER OF DESIGN AND ENVIRONMENT

March 20 2026  
Y. Perry  
DIRECTOR OF HIGHWAYS PROJECT IMPLEMENTATION

**PRINTED BY THE AUTHORITY  
OF THE STATE OF ILLINOIS**

MODEL: Signature Sheet (Sheet)  
 FILE NAME: c:\pwworkspace\mshandiel.morris@illinois.gov\1103153\0978845-SHA-Cover.dgn

Prepared By: Susan Re  
 DISTRICT STUDIES & PLANS ENGINEER

Examined By: Nancy Ho  
 DISTRICT LAND ACQUISITION ENGINEER

Examined By: Chris Nelson  
 DISTRICT PROGRAM DEVELOPMENT ENGINEER

Examined By: [Signature]  
 DISTRICT OPERATIONS ENGINEER

Examined By: \_\_\_\_\_  
 DISTRICT PROJECT IMPLEMENTATION ENGINEER

Examined By: Burwill  
 DISTRICT CONSTRUCTION ENGINEER

Examined By: Aan Wang  
 DISTRICT MATERIALS ENGINEER

USER NAME = nathaniel.morris	DESIGNED -	REVISED -
	DRAWN -	REVISED -
	CHECKED -	REVISED -
PLOT DATE = 12/17/2025	DATE -	REVISED -

**STATE OF ILLINOIS  
 DEPARTMENT OF TRANSPORTATION**

**SIGNATURES**

SCALE: SHEET 2 OF 23 SHEETS STA. TO STA.

F.A.S. RTE.	SECTION	COUNTY	TOTAL SHEETS	SHEET NO.
1907	D9 Bridge Overlay 2026-6	Alexander	23	2
CONTRACT NO. 78B45				
ILLINOIS FED. AID PROJECT				





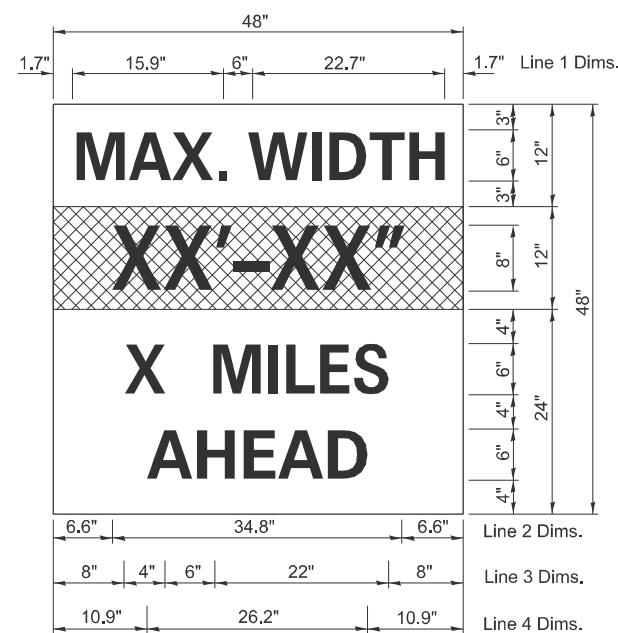
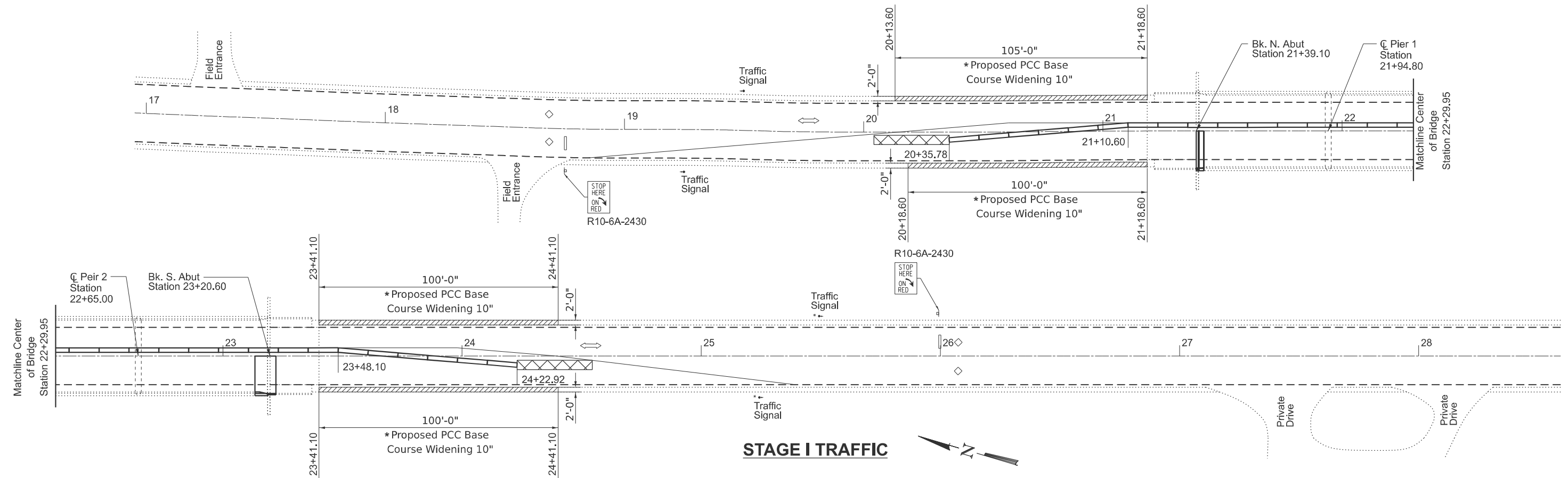








\* Must be installed pre stage I under traffic standard 701326.



**W12-I103**

W12-I103, No Border  
 "MAX WIDTH" 6D, No Border, Black on White  
 "XX'-XX"" 8D, No Border, Black on Orange  
 "X MILES" 6D, No Border, Black on White  
 "AHEAD" 6D, No Border, Black on White

**Notes for Max Width Sign:**

1. Install a Max Width Sign each direction on IL 127 to give traffic approaching work zone enough advance notice to change routes if needed. Exact locations as directed by engineer.
2. The contractor shall furnish the posts and erect the signs at the locations directed by the engineer. All signs shall be post mounted.
3. The noted work, including signs, posts, hardware and labor shall be included in the contract unit price, each, for Traffic Control and Protection, Std. 701321, no other compensation will be allowed.
4. The width shown on the W12-I103 sign shall be 10'-1" or as directed by the Engineer.
5. The "X" MILES AHEAD will be determined by the engineer.

**LEGEND:**

Impact Attenuator

MODEL: Plan Sheet 9 [Sheet]  
 FILE NAME: c:\p\work\w12ofnathaniel.morris@illinois.gov\d1103153\D978845-SHD-Typicals.dgn

USER NAME = nathaniel.morris	DESIGNED -	REVISED -
	DRAWN -	REVISED -
	CHECKED -	REVISED -
PLOT DATE = 1/29/2026	DATE -	REVISED -

**STATE OF ILLINOIS  
 DEPARTMENT OF TRANSPORTATION**

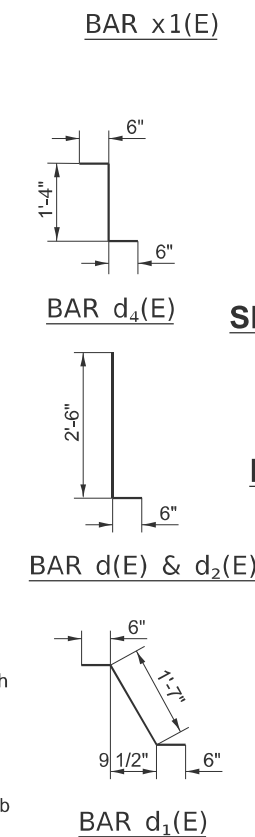
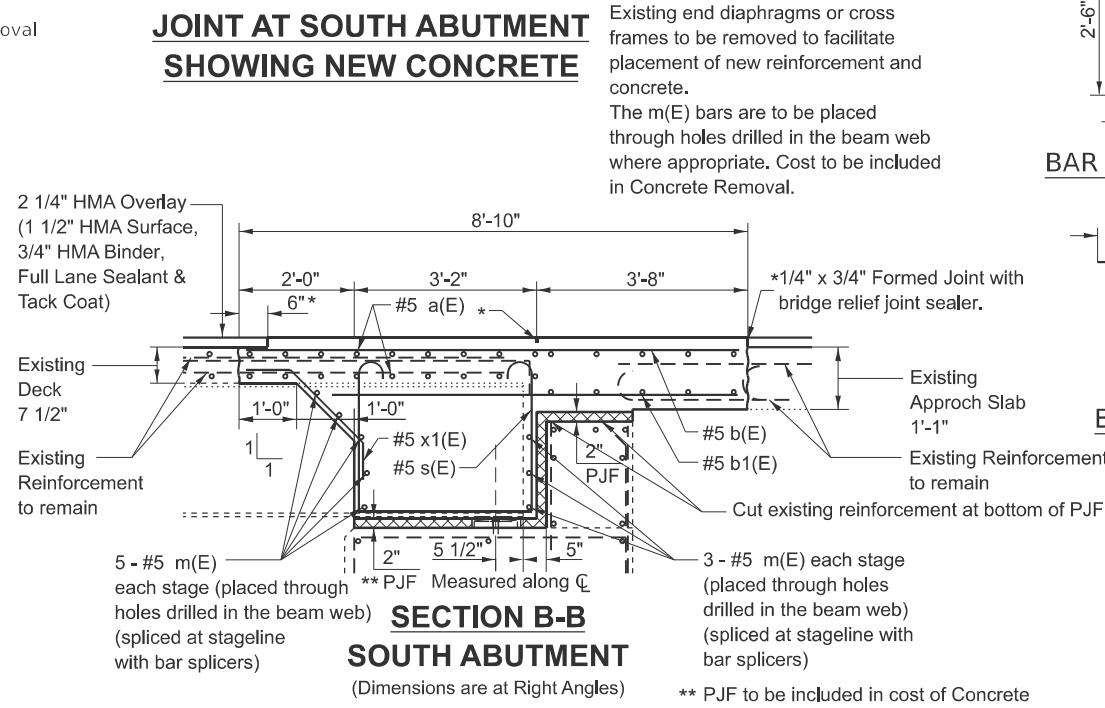
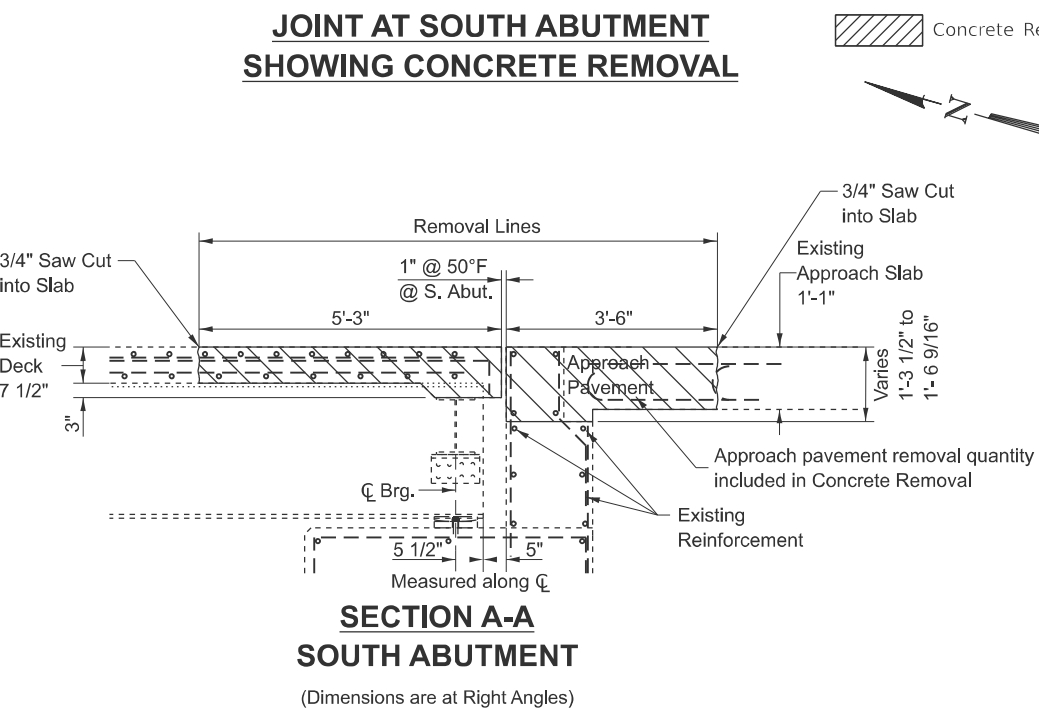
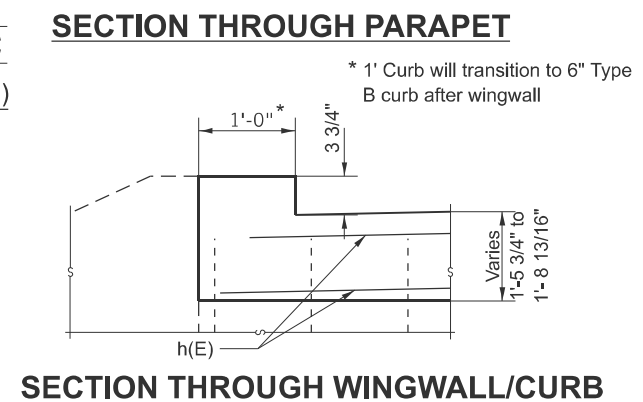
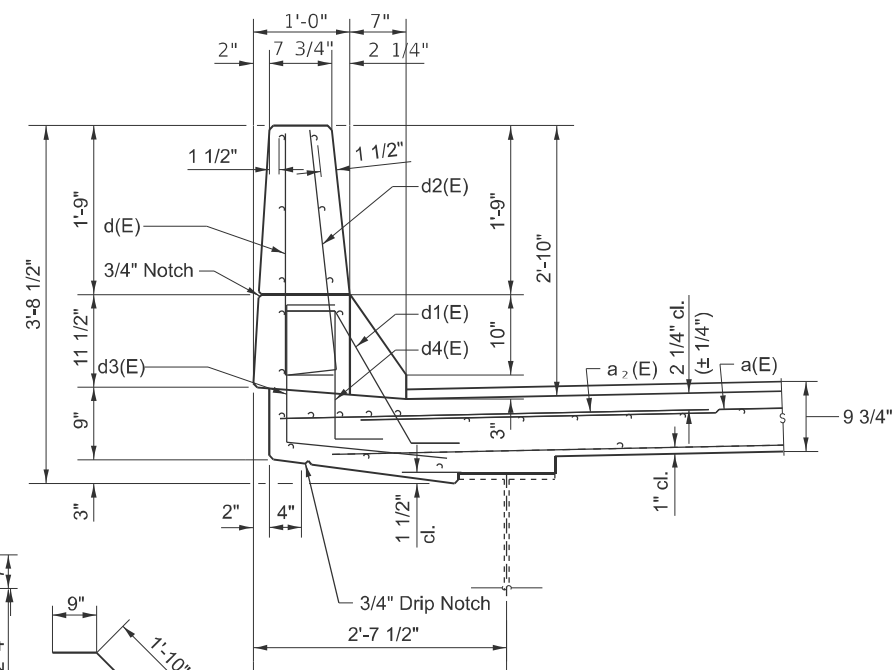
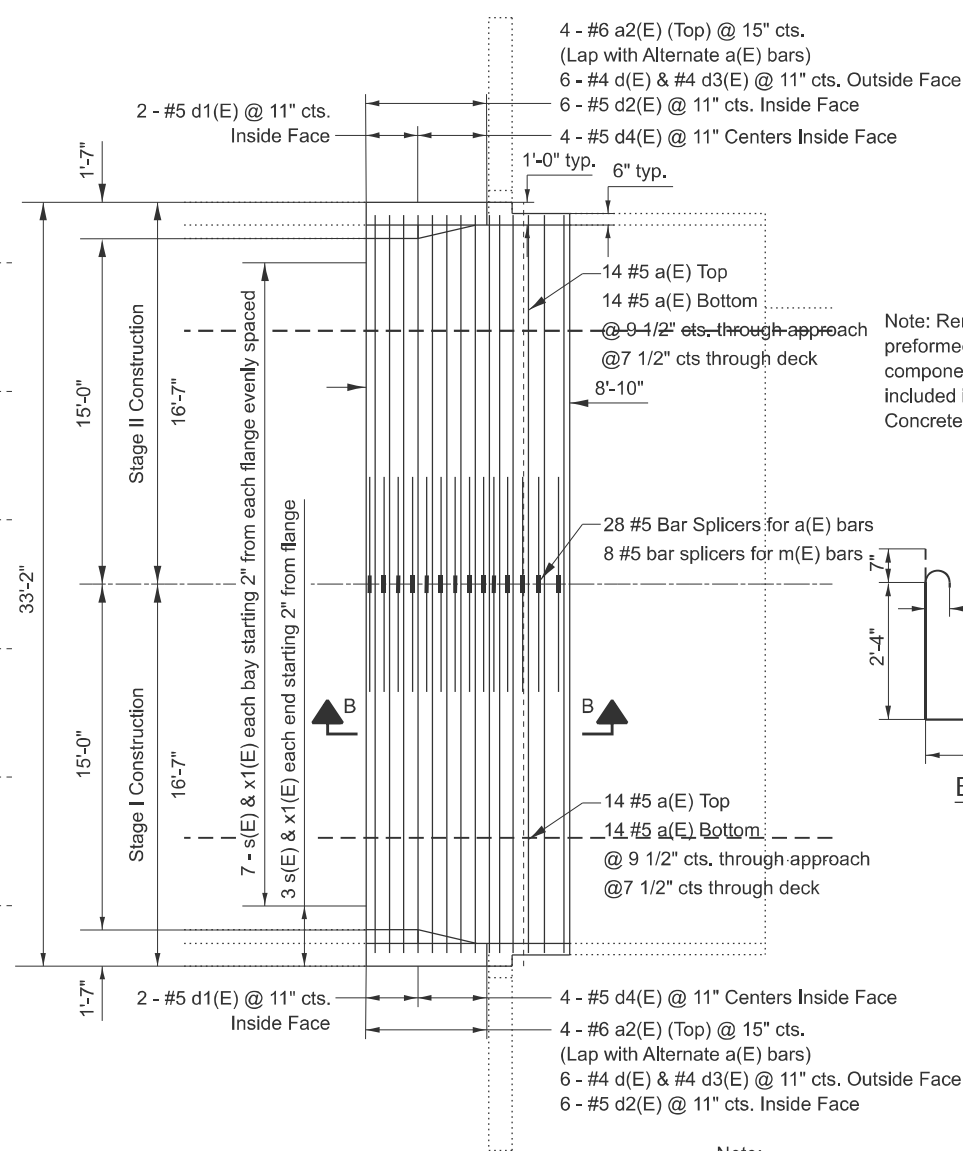
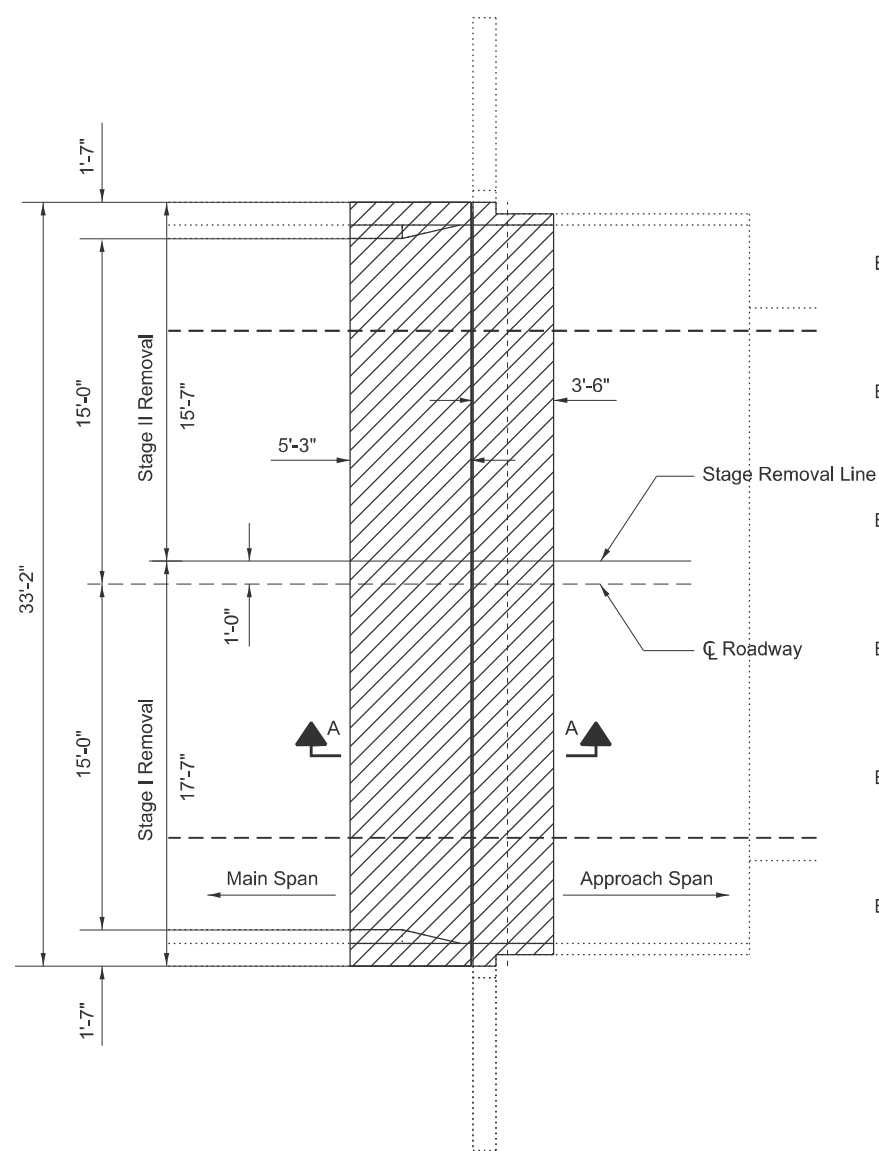
**STAGE 1 PLAN  
 002-0033**

SCALE: SHEET 9 OF 23 SHEETS STA. TO STA.

F.A.S. RTE.	SECTION	COUNTY	TOTAL SHEETS	SHEET NO.
1907	D9 Bridge Overlay 2026-6	Alexander	23	9
CONTRACT NO. 78B45				
ILLINOIS FED. AID PROJECT				







**BILL OF MATERIAL (SOUTH ABUTMENT)**

Bar	No.	Size	Length	Shape
a(E)	56	#5	16'-0"	—
a2(E)	8	#6	6'-0"	—
b(E)	34	#5	8'-6"	—
b1(E)	34	#5	7'-1"	—
d(E)	12	#4	3'-0"	└
d1(E)	4	#5	2'-7"	└
d2(E)	12	#5	3'-0"	└
d3(E)	12	#4	3'-7"	└
d4(E)	8	#5	2'-4"	└
m(E)	16	#5	16'-0"	—
s(E)	41	#6	8'-9"	□
x1(E)	41	#5	3'-3"	└
Bar Splicer	Each		36	
Concrete Superstructure	Cu. Yd.		22.3	
Concrete Removal	Cu. Yd.		10.7	
Reinforcement Bars, Epoxy Coated	Pound		2630	

MODEL: Plan Sheet 12 (Sheet)  
FILE NAME: c:\p\work\bridge\thantiel.morris@illinois.gov\11031531D978845-SHD-Typicals.dgn

USER NAME = nathaniel.morris	DESIGNED -	REVISED -
	DRAWN -	REVISED -
	CHECKED -	REVISED -
PLOT DATE = 1/29/2026	DATE -	REVISED -

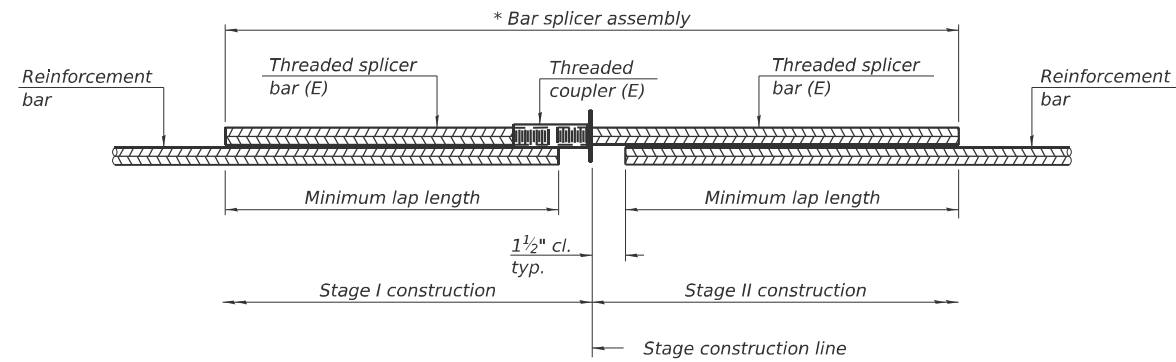
STATE OF ILLINOIS  
DEPARTMENT OF TRANSPORTATION

JOINT ELIMINATION DETAILS  
SOUTH ABUTMENT SN 002-0033

SCALE: SHEET 12 OF 23 SHEETS STA. TO STA.

F.A.S RTE.	SECTION	COUNTY	TOTAL SHEETS	SHEET NO.
1907	D9 Bridge Overlay 2026-6	Alexander	23	12
CONTRACT NO. 78B45			ILLINOIS FED. AID PROJECT	



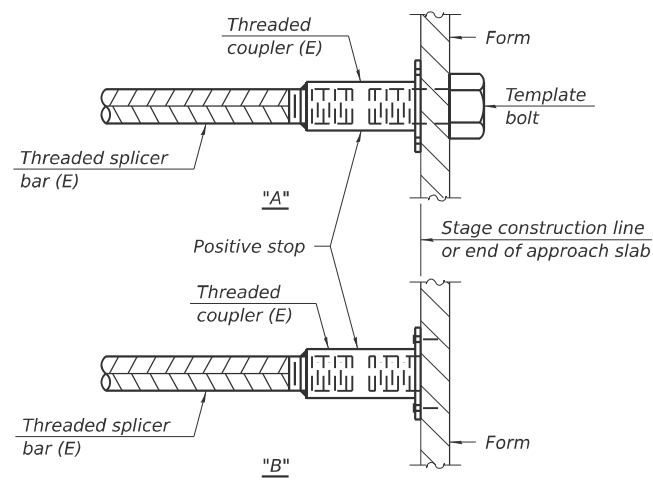


**STANDARD BAR SPLICER ASSEMBLY PLAN**

Only bar splicer assemblies as presented on the approved QPL list may be used.

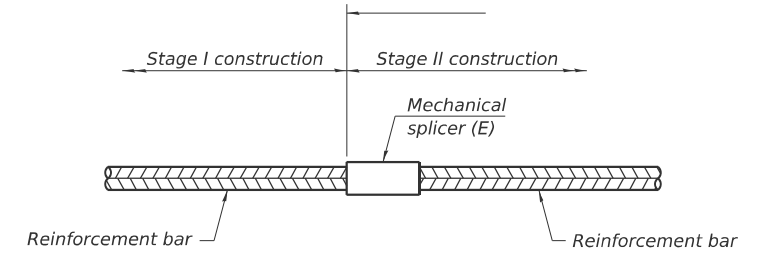
Threaded splicer bar length = min. lap length + 1 1/2" + thread length

\* Epoxy not required on Bar Splicer Assembly components used in conjunction with black bars.



**INSTALLATION AND SETTING METHODS**

"A" : Set bar splicer assembly by means of a template bolt.  
 "B" : Set bar splicer assembly by nailing to wood forms or cementing to steel forms.  
 (E) : Indicates epoxy coating.



**STANDARD MECHANICAL SPLICER**

SN 002-0033		
Location	Bar size	No. assemblies required
North Abutment	#5	28

SN 002-0033			
Location	Bar size	No. assemblies required	Minimum lap length
North Abutment	#5	8	3'-6"
South Abutment	#5	36	3'-6"
North Abutment - Hatchblock	#6	4	4'-0"

Notes:  
 Splicer bars shall be deformed with threaded ends and have a minimum 60 ksi yield strength.  
 All reinforcement shall be lapped and tied to the splicer bars.  
 Bar splicer assemblies shall be epoxy coated according to the requirements for reinforcement bars. See Section 508 of the Standard Specifications.  
 See approved list of bar splicer assemblies and mechanical splicers for alternatives.

BSD-1

5-15-2023

MODEL: Plan Sheet 14 (Sheet)  
 FILE NAME: c:\p\work\pwworking\dnathaniel.morris@illinois.gov\d1103153\0978845-SHD-Typicals.dgn

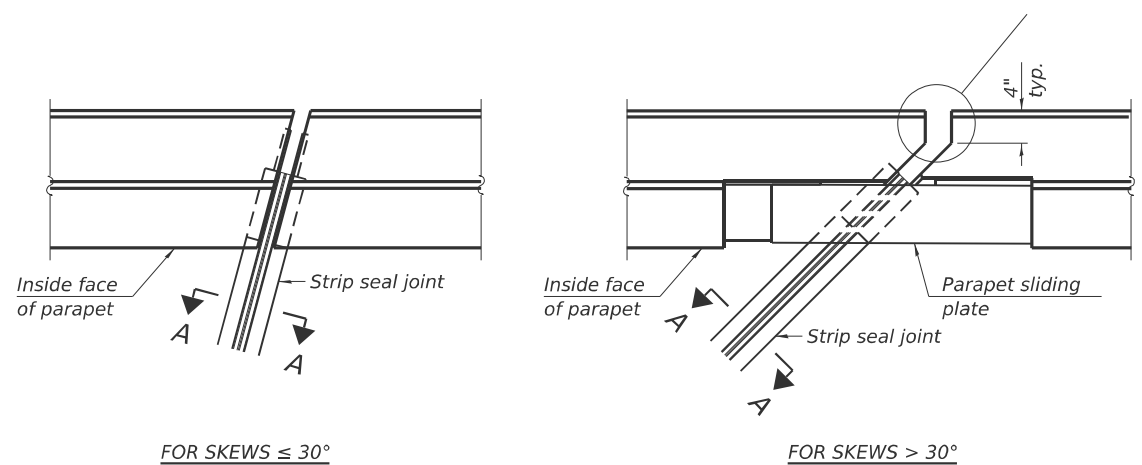
USER NAME = nathaniel.morris	DESIGNED -	REVISED -
	DRAWN -	REVISED -
	CHECKED -	REVISED -
PLOT DATE = 1/29/2026	DATE -	REVISED -

**STATE OF ILLINOIS  
 DEPARTMENT OF TRANSPORTATION**

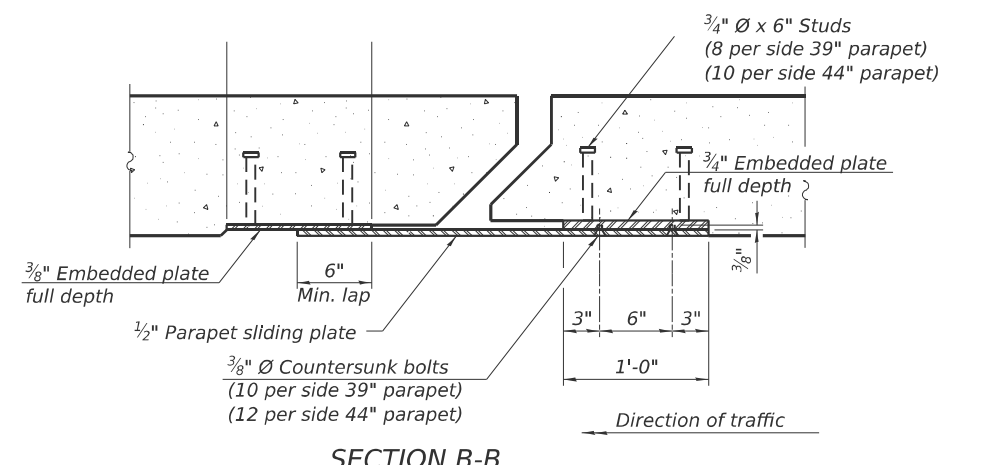
**BAR SPLICER ASSEMBLY & MECHANICAL SPLICER DETAILS  
 SN 002-0033**

SCALE: SHEET 14 OF 23 SHEETS STA. TO STA.

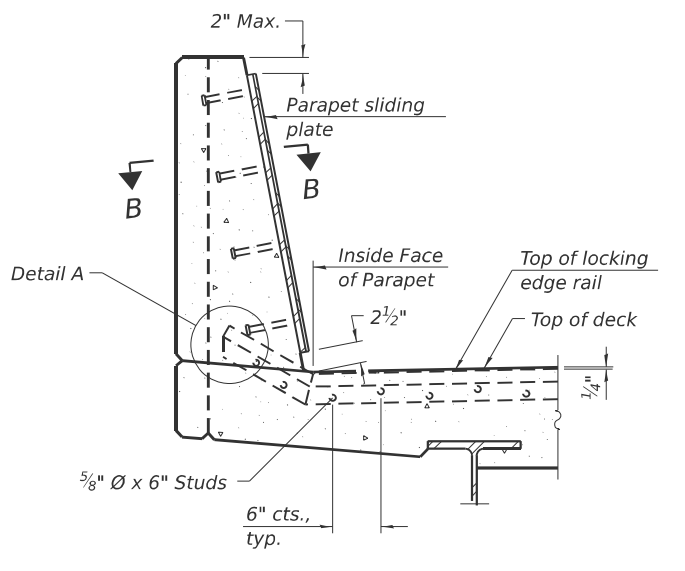
F.A.S RTE.	SECTION	COUNTY	TOTAL SHEETS	SHEET NO.
1907	D9 Bridge Overlay 2026-6	Alexander	23	14
CONTRACT NO. 78B45			ILLINOIS FED. AID PROJECT	



PLAN AT PARAPET

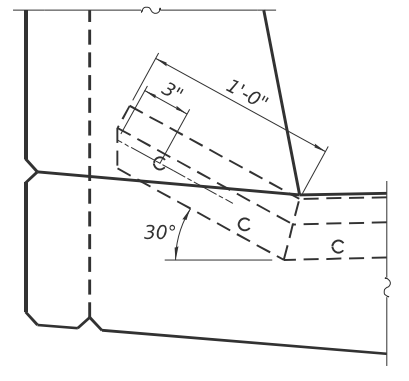


SECTION B-B

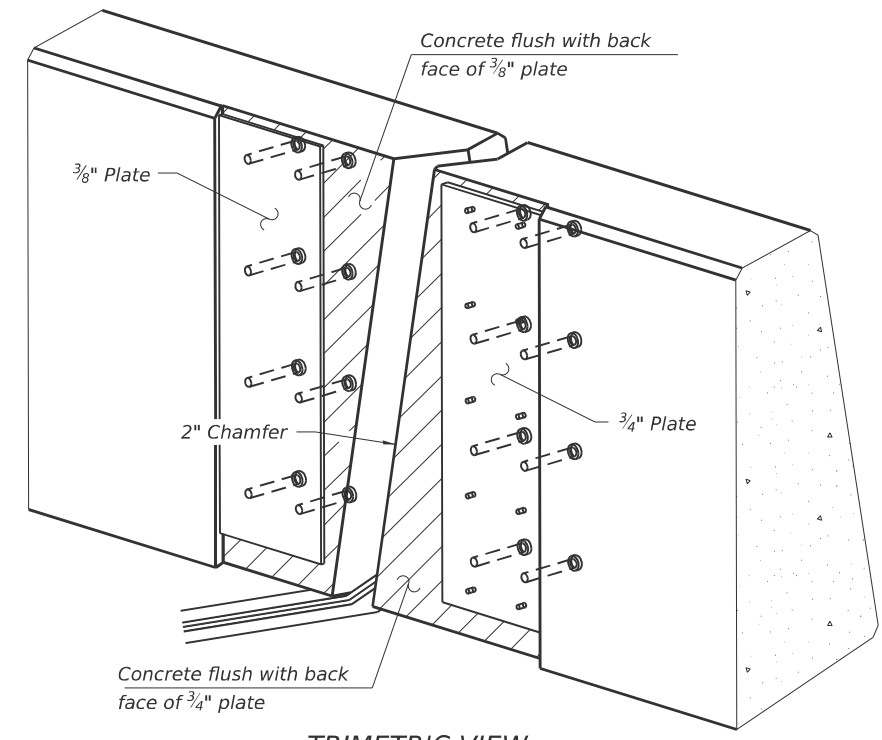


SECTION AT PARAPET

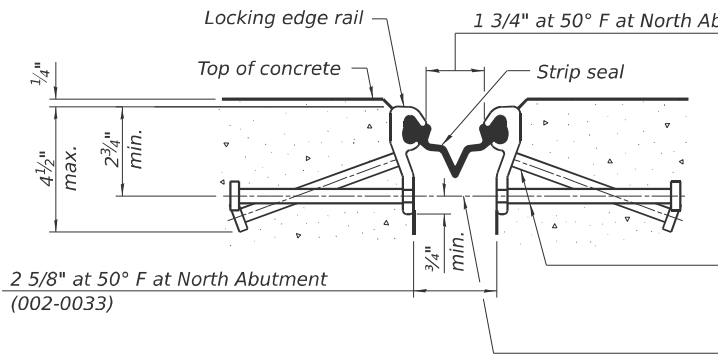
(Skews > 30° shown. Skews ≤ 30° similar except as shown in plan view.)



DETAIL A



TRIMETRIC VIEW (Showing embedded plates only)



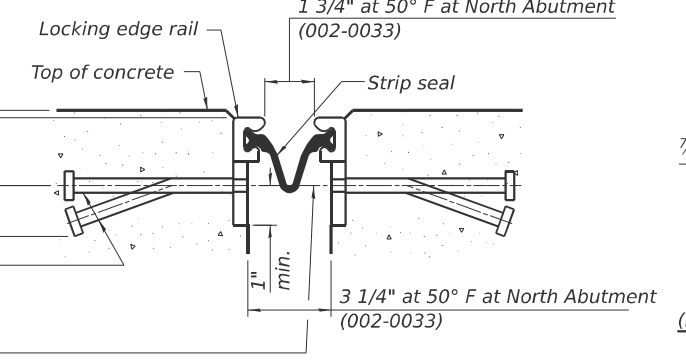
SHOWING ROLLED RAIL JOINT

\* 5/8" Ø x 6" studs @ 6" cts. (alternate angled/bent studs with horizontal studs)

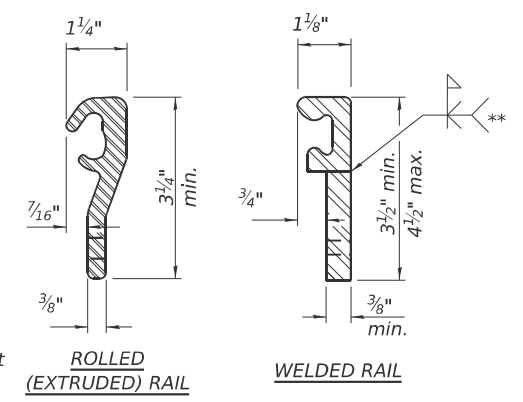
3/8" Ø threaded rods in 7/16" Ø holes at 4'-0" ± cts. for holding the proper joint opening based on the temperature during the deck pour. Place to miss studs. All rods shall be burned, or sawed off flush with the plates after concrete is set.

SECTION A-A

\* Granular or solid flux filled headed studs conforming to Article 1006.32 of the Std. Specs., automatically end welded.

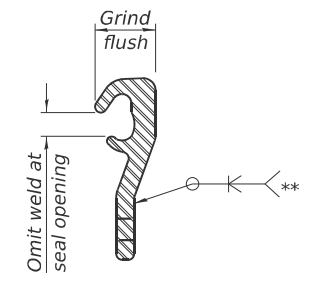


SHOWING WELDED RAIL JOINT



LOCKING EDGE RAILS

\*\* Back gouge not required if complete joint penetration is verified by mock-up.



LOCKING EDGE RAIL SPLICE

The inside of the locking edge rail groove shall be free of weld residue. Rolled rail shown, welded rail similar.

BILL OF MATERIAL

SN 002-0033		
Item	Unit	Total
Preformed Joint Strip Seal	Foot	34

MODEL: Plan Sheet 15 (Sheet) FILE NAME: c:\p\work\78845-SHD-Typicals.dgn

EJ-SS

5-15-2023

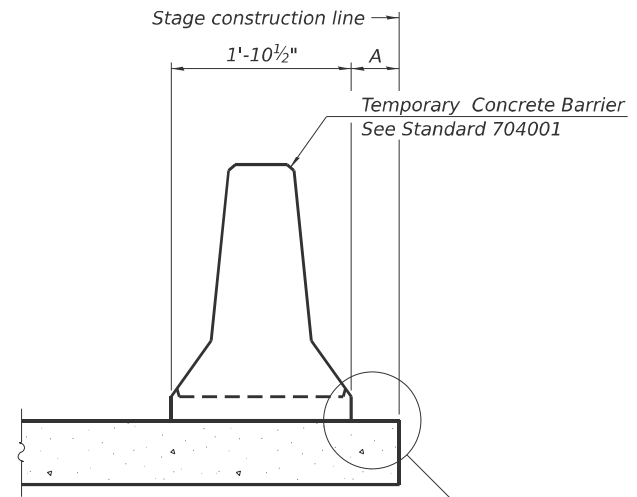
USER NAME = nathaniel.morris	DESIGNED -	REVISED -
	DRAWN -	REVISED -
	CHECKED -	REVISED -
PLOT DATE = 1/29/2026	DATE -	REVISED -

STATE OF ILLINOIS  
DEPARTMENT OF TRANSPORTATION

PREFORMED JOINT STRIP SEAL  
SN 002-0033

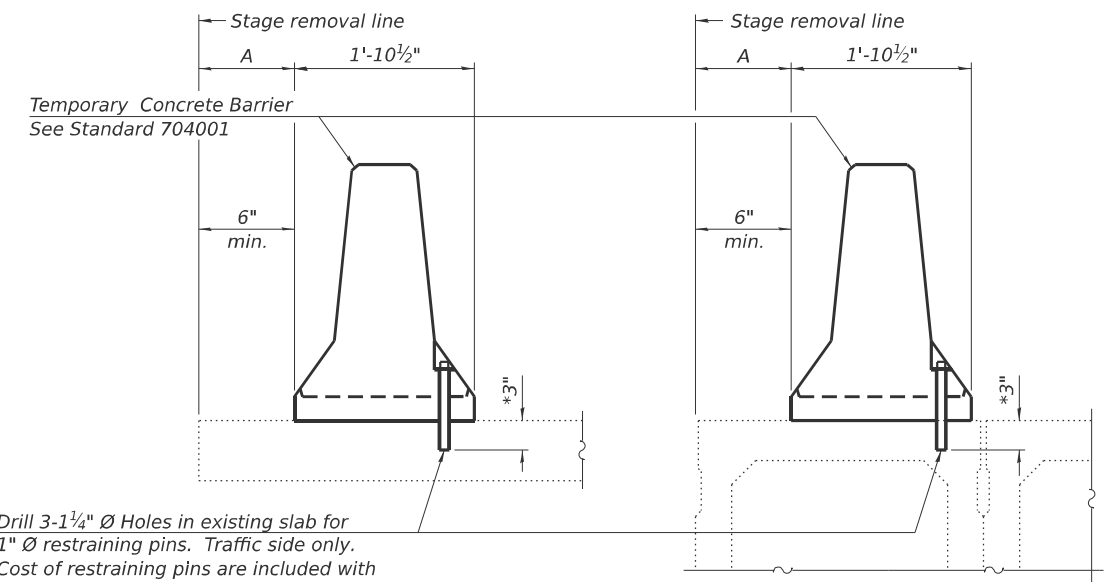
SCALE: SHEET 15 OF 23 SHEETS STA. TO STA.

F.A.S. RTE.	SECTION	COUNTY	TOTAL SHEETS	SHEET NO.
1907	D9 Bridge Overlay 2026-6	Alexander	23	15
CONTRACT NO. 78B45			ILLINOIS FED. AID PROJECT	



When "A" is 3'-1" or less, the temporary concrete barrier shall be restrained to the new slab according to Detail I, II or III. No restraint is required when "A" is greater than 3'-1".

NEW SLAB OR NEW DECK BEAM



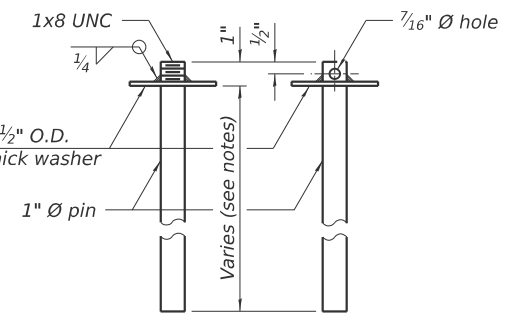
Drill 3-1/4" Ø Holes in existing slab for 1" Ø restraining pins. Traffic side only. Cost of restraining pins are included with Temporary Concrete Barrier. No restraint is required when "A" is greater than 3'-1".

EXISTING SLAB

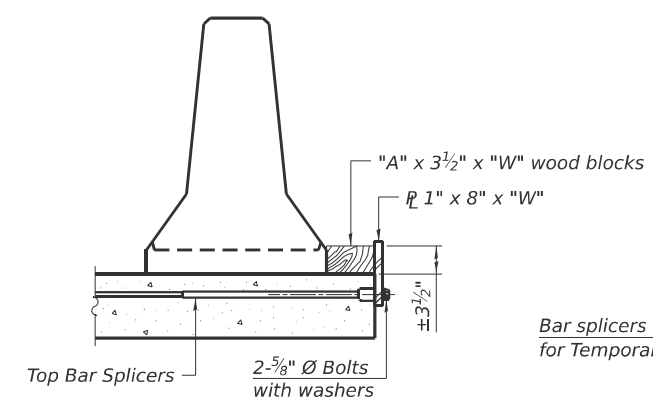
EXISTING DECK BEAM

\* When hot-mix asphalt wearing surface is present, embedment shall be 3" plus the wearing surface depth.

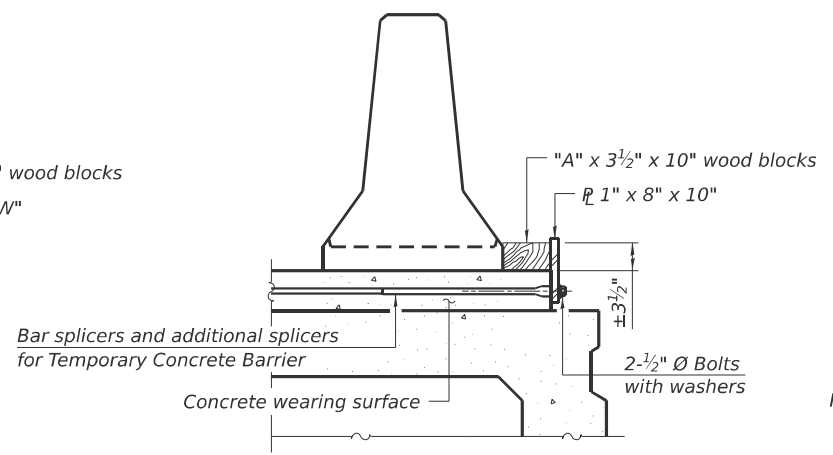
SECTIONS THRU SLAB OR DECK BEAM



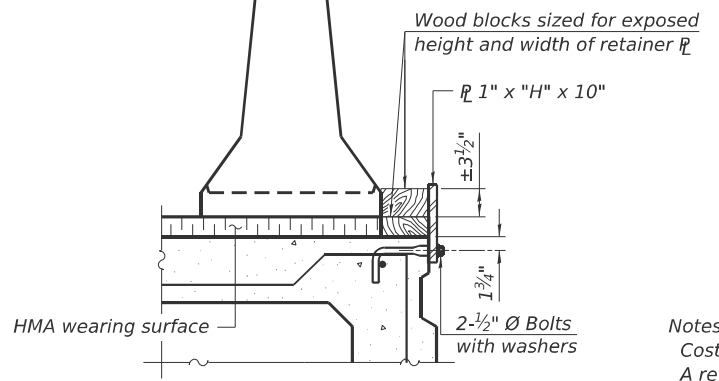
RESTRAINING PIN



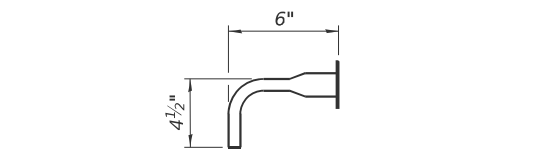
DETAIL I



DETAIL II



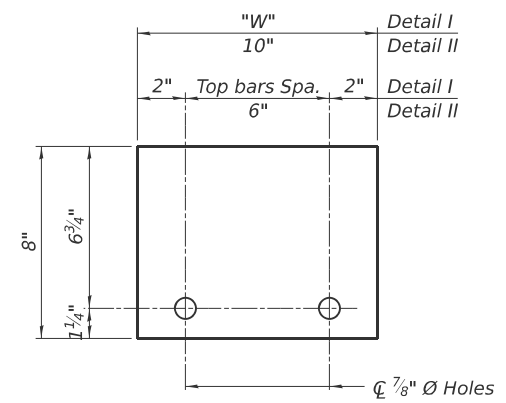
DETAIL III



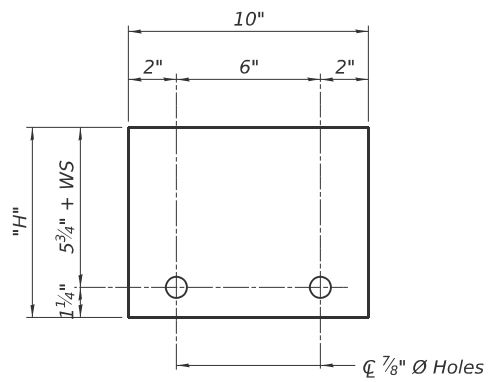
BAR SPLICER FOR #4 BAR - DETAIL III

Notes:  
 Cost of retainer assembly is included with Temporary Concrete Barrier.  
 A retainer assembly shall be located at the approximate  $\bar{C}$  of each temporary concrete barrier.  
 The retainer plate shall not be removed until the concrete on the adjacent stage is ready to be poured. For Detail III applications the retainer plate shall not be removed until just prior to placing the adjacent beam.  
 When the 'A' dimension is less than 1 1/2", the wood block shall be omitted and the barrier shall be placed in direct contact with the steel retainer plate. For deck beam applications the minimum required 'A' distance is 6" to accommodate the shear key clamping device.

Detail I - Installation for a new bridge deck or bridge slab.  
 Detail II - Installation for a new deck beam with an initial concrete wearing surface. Additional bar splicers shall be provided at 6'-0" centers and paired with the bar splicers of the concrete wearing surface reinforcement to accommodate the installation of the retainer assemblies. The cost of the additional bar splicers is included with the concrete wearing surface.  
 Detail III - Installation for a new deck beam with no initial wearing surface or with an initial hot-mix asphalt (HMA) wearing surface present. The deck beam directly beneath the temporary concrete barrier shall be fabricated with bar splicer inserts in the side of the beam, as detailed, to accommodate the installation of the retainer assemblies. A pair of bar splicers, 6" apart, shall be placed at 6'-0" centers along the length of the beam. The cost of the bar splicers is included with the deck beam.



STEEL RETAINER 1" x 8" x "W"  
(Detail I and II)



STEEL RETAINER 1" x "H" x 10"  
(Detail III)

RAILING CRITERIA

NCHRP 350 Test Level	3
Railing Weight (plf)	440

R-27 5-15-2023

MODEL: Plan Sheet 16 (Sheet) FILE NAME: c:\p\work\wv\rd\thathaniel.morris@illinois.gov\d11031531\0978845-SHD-Typicals.dgn

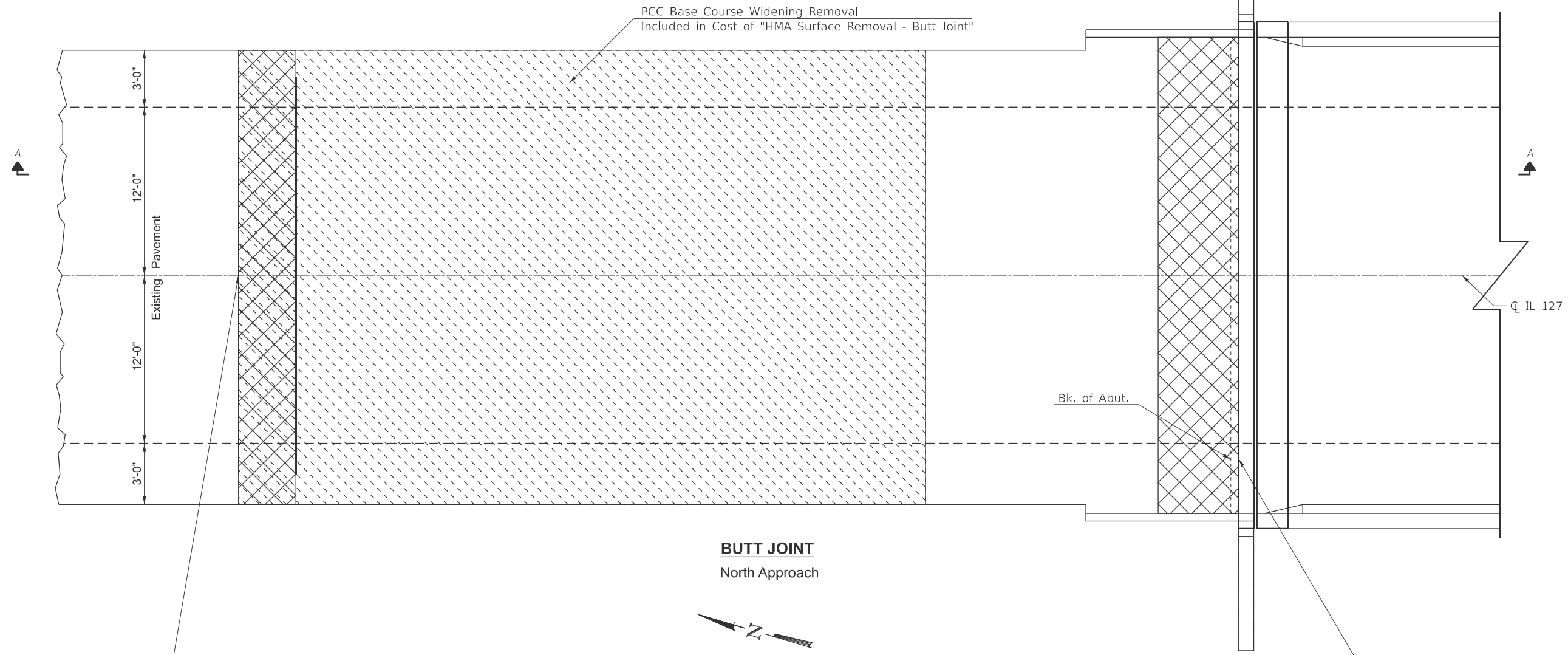
USER NAME = nathaniel.morris	DESIGNED -	REVISED -
	DRAWN -	REVISED -
	CHECKED -	REVISED -
PLOT DATE = 1/29/2026	DATE -	REVISED -

STATE OF ILLINOIS  
DEPARTMENT OF TRANSPORTATION

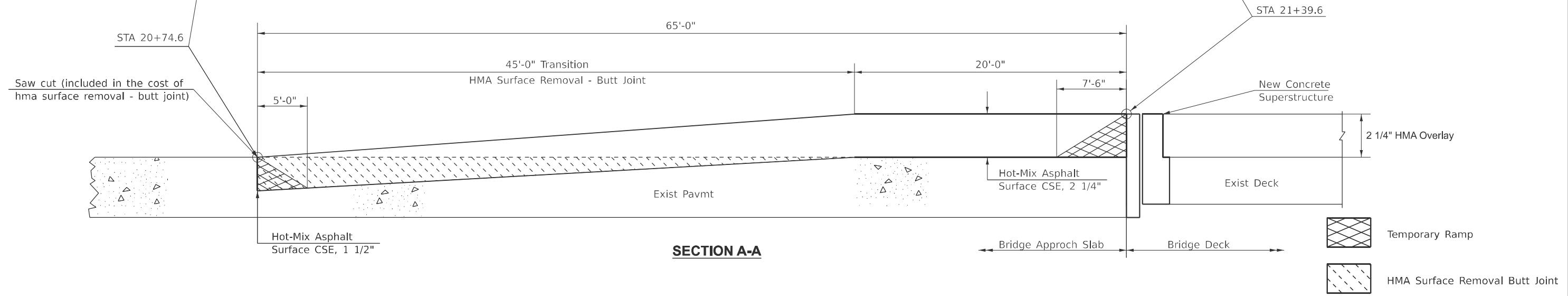
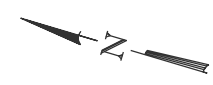
TEMPORARY CONCRETE BARRIER  
FOR STAGE CONSTRUCTION

SCALE: SHEET 16 OF 23 SHEETS STA. TO STA.

F.A.S RTE.	SECTION	COUNTY	TOTAL SHEETS	SHEET NO.
1907	D9 Bridge Overlay 2026-6	Alexander	23	16
CONTRACT NO. 78B45			ILLINOIS FED. AID PROJECT	



**BUTT JOINT**  
North Approach



**SECTION A-A**

MODEL: Plan Sheet 17 (Sheet)  
 FILE NAME: c:\p\work\pav\road\hathaniel.morris@illinois.gov\11031531\0978845-SHD-Typicals.dgn

USER NAME = nathaniel.morris	DESIGNED -	REVISED -
	DRAWN -	REVISED -
	CHECKED -	REVISED -
PLOT DATE = 1/29/2026	DATE -	REVISED -

**STATE OF ILLINOIS**  
**DEPARTMENT OF TRANSPORTATION**

**BUTT JOINT DETAILS**  
**SN 002-0033**

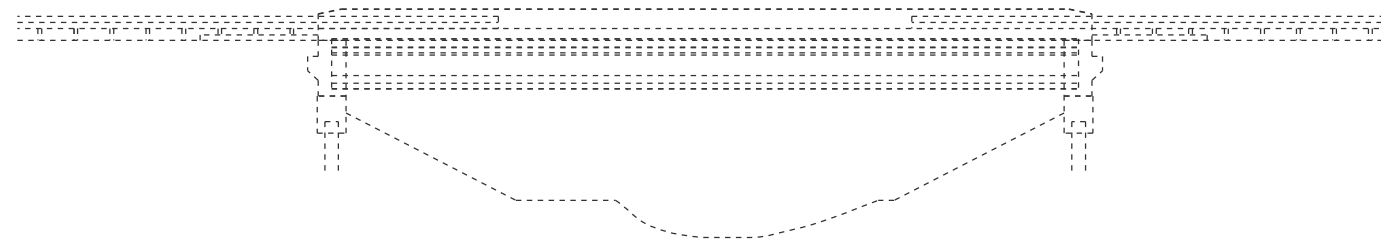
SCALE: SHEET 17 OF 23 SHEETS STA. TO STA.

F.A.S RTE.	SECTION	COUNTY	TOTAL SHEETS	SHEET NO.
1907	D9 Bridge Overlay 2026-6	Alexander	23	17
CONTRACT NO. 78B45				
ILLINOIS FED. AID PROJECT				

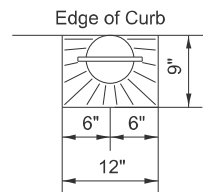
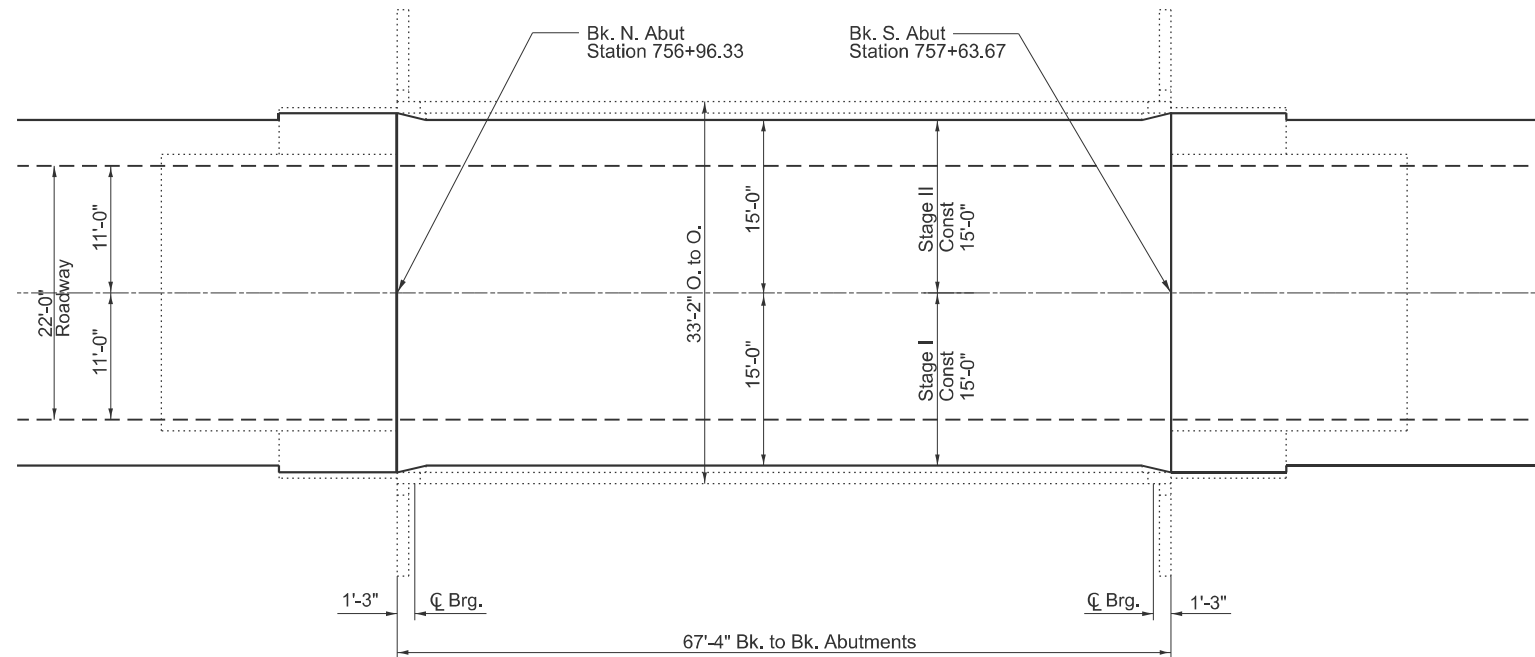


**GENERAL NOTES**

Plan dimensions and details relative to the existing structure have been taken from existing plans and are subject to nominal construction variations. The Contractor shall field verify existing dimensions and details affecting new construction and make necessary approved adjustments prior to construction or ordering of materials. Such variations shall not be cause for additional compensation for a change in scope of the work, however, the Contractor will be paid for the quantity actually furnished at the unit price bid for the work.



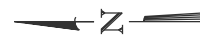
**ELEVATION**



**FLOOR DRAIN**

Slope Overlay at Drains  
8 Total Drains at Bridge Deck

**PLAN**



**DESIGN STRESSES**

(From Existing Plans)  
Design Loading HS 20-44  
Design Stresses  
f<sub>c</sub>=3,500 psi  
f<sub>y</sub>=60,000psi (Reinf.)  
f<sub>y</sub>=50,000 psi (Structure)

(New)  
f<sub>c</sub>=4,000 psi  
f<sub>y</sub>=60,000psi (Reinf.)

Design Specifications  
2002 AASHTO Standard Specifications for Highway Bridges, 17 Edition.

**SCOPE OF WORK**

HMA Overlay with FLS  
Deck Repairs  
Approach Repairs  
Substructure Repairs

**TOTAL BILL OF MATERIAL**

ITEM	UNIT	QUANTITY
* Polymerized Hot-Mix Asphalt Surface Course	Ton	66
Structural Repair of Concrete ( Depth ≤5")	Sq. Ft.	3
Approach Slab Repair (Partial Depth)	Sq. Yd.	3.4
Deck Slab Repair (Partial Depth)	Sq. Yd.	1.2
Epoxy Crack Injection	Foot	14
Full Lane Sealant Waterproofing System	Sq. Yd.	224

\* Additional Quantity Included for Resurfacing of Approach Pavement and Roadway - See Butt-Joint Detail



Expires November 30, 2026

*Justin W. Mann*

**GENERAL PLAN & ELEVATION  
IL 127 OVER JACKSON CREEK  
FAS 1907 - D9 BRIDGE OVERLAY 2026-6  
ALEXANDER COUNTY  
STRUCTURE NO. 002-0035**

MODEL: Plan Sheet 19 (Sheet)  
FILE NAME: c:\p\work\project\alexander\morris\1103153\19\78845-Str-02-Typicals.dgn

USER NAME = nathaniel.morris	DESIGNED -	REVISED -
	DRAWN -	REVISED -
	CHECKED -	REVISED -
PLOT DATE = 1/29/2026	DATE -	REVISED -

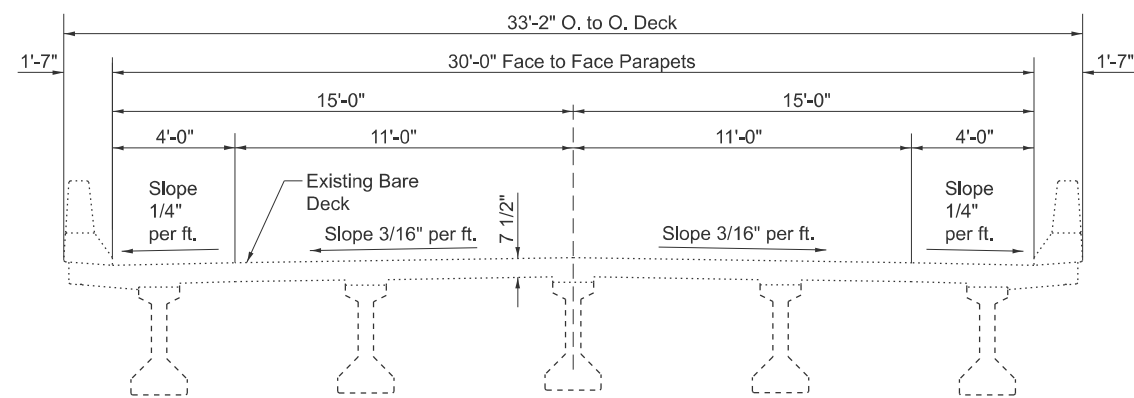
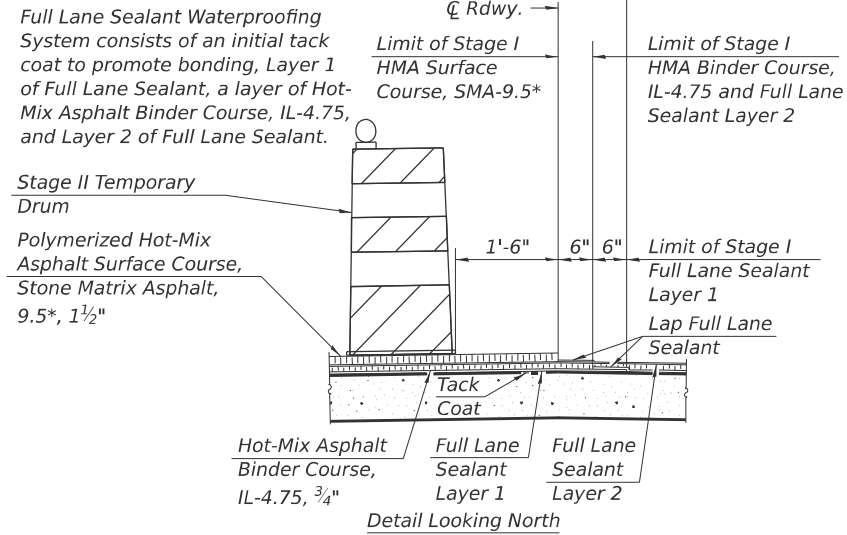
**STATE OF ILLINOIS  
DEPARTMENT OF TRANSPORTATION**

**GENERAL PLAN & ELEVATION  
SN 002-0035**

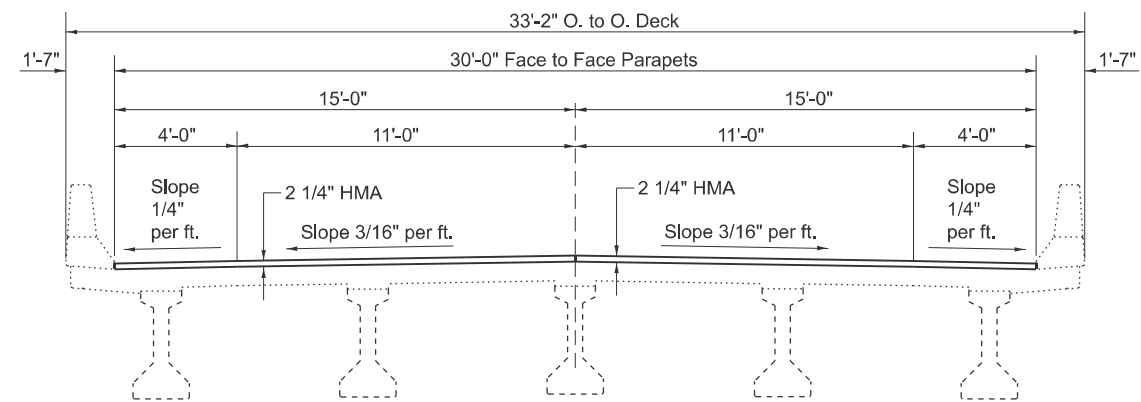
SCALE: SHEET 19 OF 23 SHEETS STA. TO STA.

F.A.S RTE.	SECTION	COUNTY	TOTAL SHEETS	SHEET NO.
1907	D9 Bridge Overlay 2026-6	Alexander	23	19
CONTRACT NO. 78B45				
ILLINOIS FED. AID PROJECT				

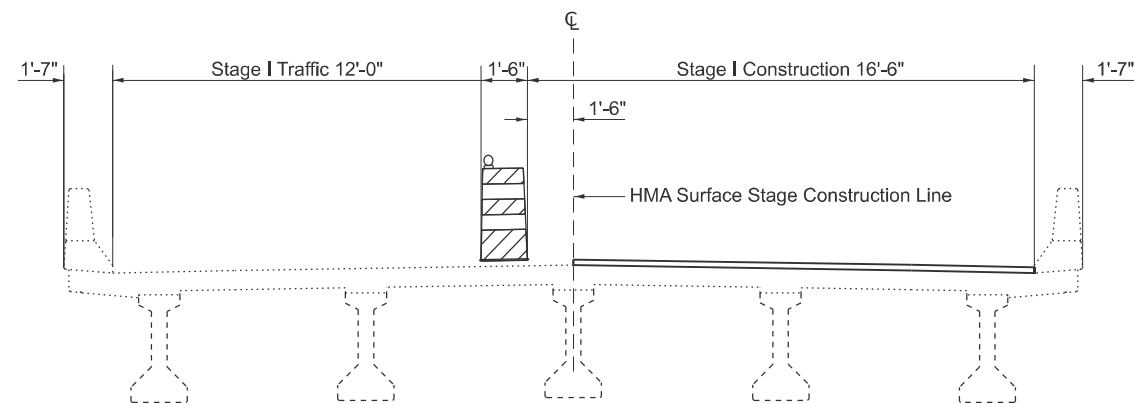
**WATERPROOFING STAGING**



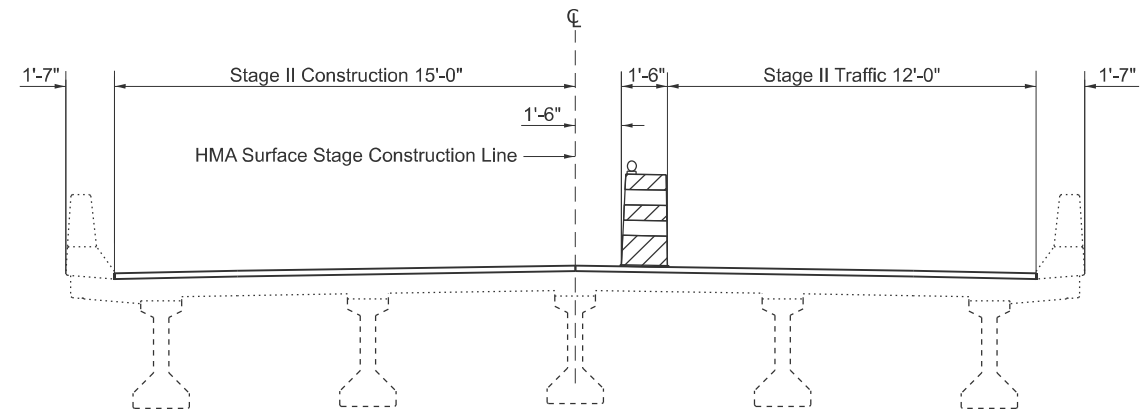
**TYPICAL BRIDGE SECTION - EXISTING**



**TYPICAL BRIDGE SECTION - PROPOSED**



**STAGE I CONSTRUCTION**



**STAGE II CONSTRUCTION**

Notes: All Sections Looking South

MODEL: Plan Sheet 20 (Sheet)  
FILE NAME: c:\p\work\bridge\overlays\morriss@illinois.gov\1103153\1907\8845-SHD-Typicals.dgn

USER NAME = nathaniel.morris	DESIGNED -	REVISED -
	DRAWN -	REVISED -
	CHECKED -	REVISED -
PLOT DATE = 1/29/2026	DATE -	REVISED -

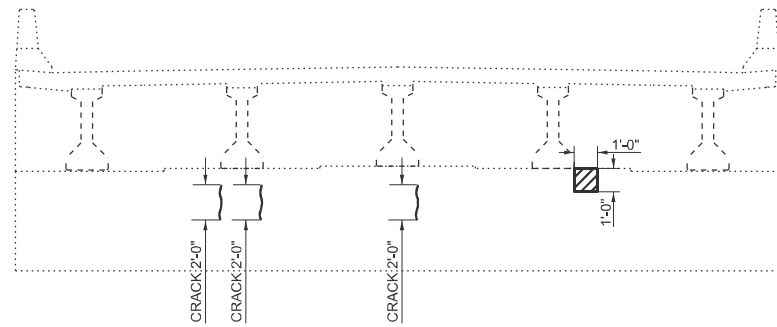
**STATE OF ILLINOIS  
DEPARTMENT OF TRANSPORTATION**

**TYPICAL SECTION, STAGING, & FLS DETAILS  
SN 002-0035**

SCALE: SHEET 20 OF 23 SHEETS STA. TO STA.

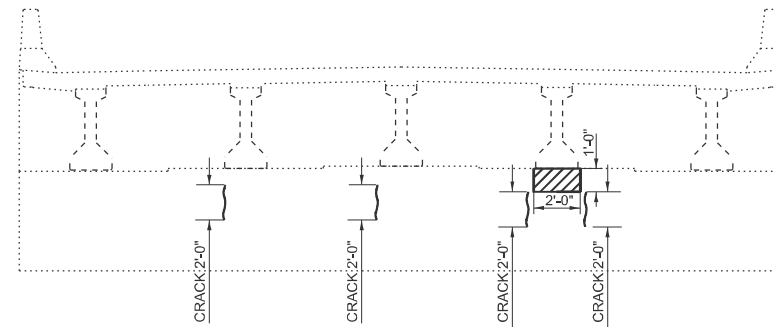
F.A.S RTE.	SECTION	COUNTY	TOTAL SHEETS	SHEET NO.
1907	D9 Bridge Overlay 2026-6	Alexander	23	20
CONTRACT NO. 78B45				
ILLINOIS FED. AID PROJECT				





**NORTH FACE SOUTH ABUTMENT  
LOOKING SOUTH**

Showing Epoxy Crack Injection &  
Structural Repair of Concrete (Depth ≤ 5")



**SOUTH FACE NORTH ABUTMENT  
LOOKING NORTH**

Showing Epoxy Crack Injection &  
Structural Repair of Concrete (Depth ≤ 5")



Deck Slab Repair (Partial Depth)			
North Bound Lane			
Number	Length (ft)	Width (ft)	Area (Sq. Yd.)
1A	1.2	2.3	0.3
2	1.5	1.5	0.3
3	0.7	1.2	0.1
4	2.0	2.4	0.5
<b>North Bound Total</b>			<b>1.2</b>

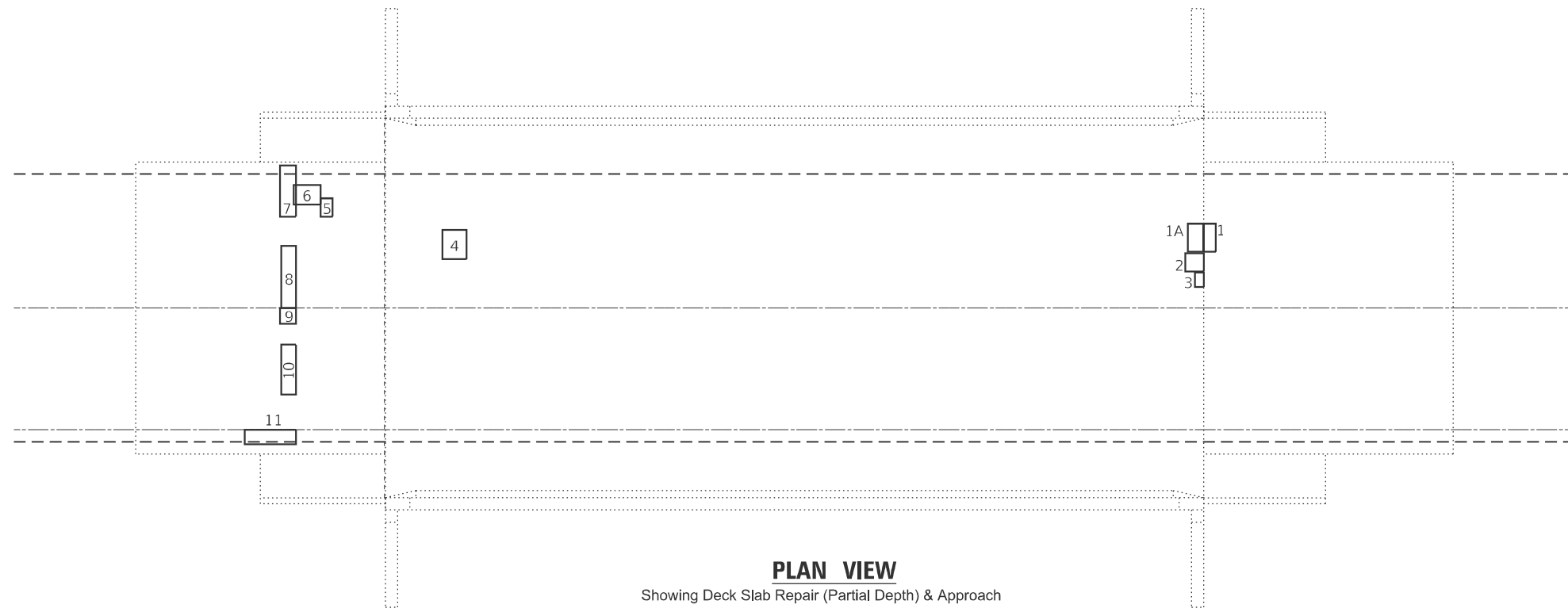
Approach Slab Repair (Partial Depth)			
North Approach			
North Bound Lane			
Number	Length (ft)	Width (ft)	Area (Sq. Yd.)
5	1.5	1.0	0.2
6	1.6	2.2	0.4
7	1.3	4.2	0.6
8	1.2	5.1	0.7
South Bound Lane			
9	1.3	1.3	0.2
10	1.2	4.1	0.5
11	1.2	4.2	0.6
<b>North Approach Total</b>			<b>3.1</b>
South Approach			
Number	Length (ft)	Width (ft)	Area (Sq. Yd.)
1	1.2	2.3	0.3
<b>South Approach Total</b>			<b>0.3</b>

Note: The Engineer will determine final patch locations and quantities in the field before bridge deck patching operations begin.  
The Engineer shall show actual locations and size of patches on As-Built Plans.

**BILL OF MATERIAL**

ITEM	UNIT	TOTAL
Structural Repair of Concrete (Depth < 5" )	SQ. FT.	3
Epoxy Crack Injection	FOOT	14
Approach Slab Repair (Partial Depth)	Sq.Yd.	3.4
Deck Slab Repair (Partial Depth)	Sq.Yd.	1.2

 Structural Repair of concrete (Depth < 5" )  
 Epoxy Crack Injection



**PLAN VIEW**

Showing Deck Slab Repair (Partial Depth) & Approach  
Slab Repair (Partial Depth) approximate locations

MODEL: Plan Sheet 22 (Sheet)  
FILE NAME: c:\p\work\bridge\morrison\morrison\103153\103153-D978845-SHD-Typicals.dgn

USER NAME = nathaniel.morris	DESIGNED -	REVISED -
	DRAWN -	REVISED -
	CHECKED -	REVISED -
PLOT DATE = 1/29/2026	DATE -	REVISED -

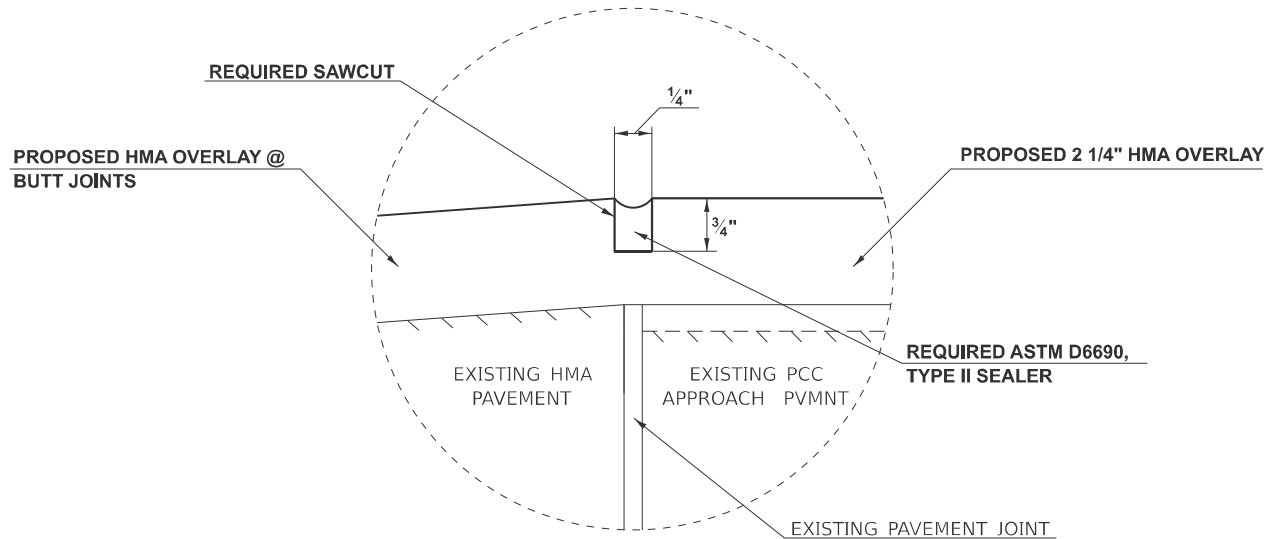
**STATE OF ILLINOIS  
DEPARTMENT OF TRANSPORTATION**

**CONCRETE REPAIR DETAILS  
SN 002-0035**

SCALE: SHEET Plan Sheet 22 [Sheet] SHEETS STA. TO STA.

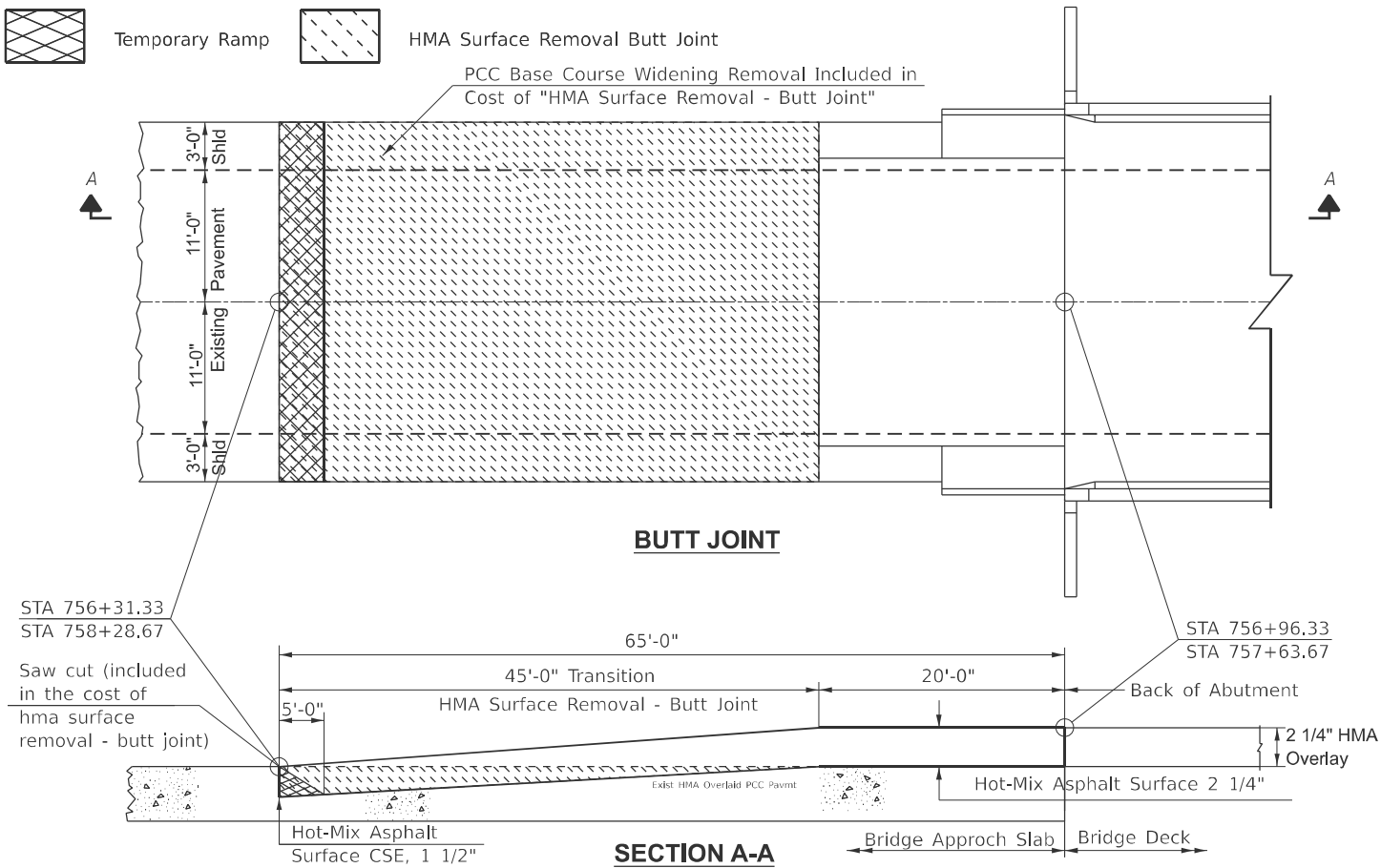
F.A.S RTE.	SECTION	COUNTY	TOTAL SHEETS	SHEET NO.
1907	D9 Bridge Overlay 2026-6	Alexander	23	22
CONTRACT NO. 78B45				
ILLINOIS FED. AID PROJECT				

# DETAIL OF SAWCUT AND JOINT SEALER



### PROP. SAWCUT AND JOINT SEALER DETAIL AT SN 002-0035 NOTES

1. THIS WORK SHALL BE INCLUDED IN THE COST OF POLYMERIZED HOT-MIX ASPHALT SURFACE COURSE, STONE MATRIX ASPHALT, 9.5, MIX "D", N50 AND INCLUDES ALL MATERIALS, MACHINERY, METHODS, AND LABOR REQUIRED TO PERFORM THIS WORK.
2. SAW CUTTING SHALL BE CENTERED OVER THE EXISTING PCC TRANSVERSE JOINT.
3. THE HOT-POURED JOINT SEALER SHALL BE PLACED ACCORDING TO ARTICLE 420.12 AND SHALL BE SUPPLIED ACCORDING TO ASTM D 6690, TYPE II AND ARTICLE 1050.02.



MODEL: Plan Sheet 23 (Sheet)  
 FILE NAME: c:\p\work\kvw\id\1103153\ID978845-SHD-Typicals.dgn

USER NAME = nathaniel.morris	DESIGNED -	REVISED -
	DRAWN -	REVISED -
	CHECKED -	REVISED -
PLOT DATE = 1/29/2026	DATE -	REVISED -

**STATE OF ILLINOIS  
DEPARTMENT OF TRANSPORTATION**

**BUTT JOINT & SAWCUT DETAILS  
SN 002-0035**

SCALE: SHEET 23 OF 23 SHEETS STA. TO STA.

F.A.S. RTE.	SECTION	COUNTY	TOTAL SHEETS	SHEET NO.
1907	D9 Bridge Overlay 2026-6	Alexander	23	23
CONTRACT NO. 78B45				
ILLINOIS FED. AID PROJECT				