

STATE OF ILLINOIS
DEPARTMENT OF TRANSPORTATION

F.A.S. RTE.	SECTION	COUNTY	TOTAL SHEETS	SHEET NO.
904	D9 Bridge Overlay 2026-8	Williamson	15	1
		ILLINOIS	CONTRACT NO. 78B47	

FOR INDEX OF SHEETS, SEE SHEET NO. 3

TRAFFIC DATA

2026: ADT = 2,160 (11% TRUCKS)
2036: ADT = 2,390 (11% TRUCKS)
2046: ADT = 2,640 (11% TRUCKS)

TOWNSHIPS

CREAL SPRINGS PRECINCT

**PROPOSED
HIGHWAY PLANS**

FAS ROUTE 904 (IL 166)
SECTION D9 BRIDGE OVERLAY 2026-8
PROJECT STP-95A2(083)
BRIDGE DECK OVERLAY
WILLIAMSON COUNTY

C-99-089-25

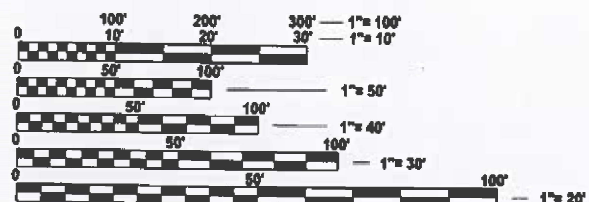
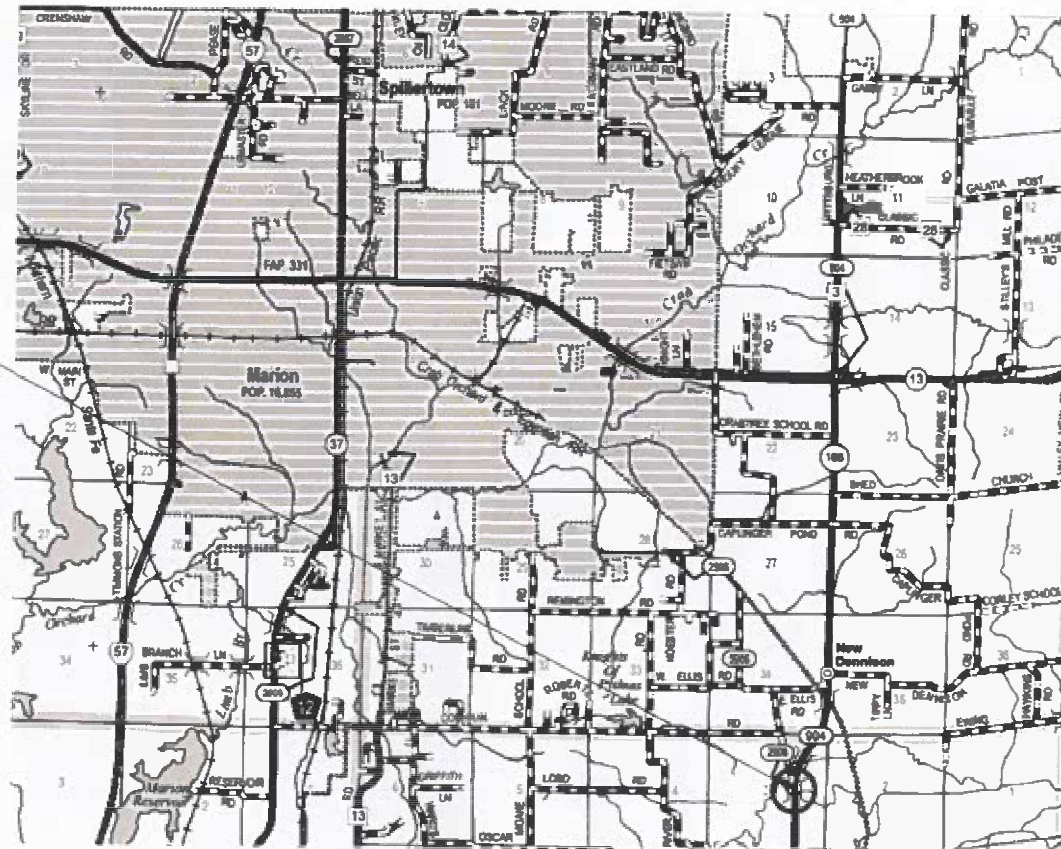


DESIGN DESIGNATION : NA

COORDINATE SYSTEM : NA

POSTED SPEED : 55 MPH

PROJECT LOCATION
SN 100-0070



FULL SIZE PLANS HAVE BEEN PREPARED USING STANDARD ENGINEERING SCALES. REDUCED SIZED PLANS WILL NOT CONFORM TO STANDARD SCALES. IN MAKING MEASUREMENTS ON REDUCED PLANS, THE ABOVE SCALES MAY BE USED.

J.U.L.L.E.
JOINT UTILITY LOCATION INFORMATION FOR EXCAVATION
1-800-892-0123
OR 811

PROJECT ENGINEER EHREN KIRBY
PROJECT DESIGNER THOMAS JEFFERSON

CONTRACT NO. 78B47

GROSS LENGTH = 430 FT. = 0.081 MILE
NET LENGTH = 430 FT. = 0.081 MILE

STATE OF ILLINOIS
DEPARTMENT OF TRANSPORTATION

SUBMITTED Jan 23 2026
Lora S. Remick
REGIONAL ENGINEER

March 20 2026
[Signature]
ENGINEER OF DESIGN AND ENVIRONMENT

March 20 2026
[Signature]
DIRECTOR OF HIGHWAYS PROJECT IMPLEMENTATION

**PRINTED BY THE AUTHORITY
OF THE STATE OF ILLINOIS**

MODEL: 02-Signature (Sheet)
 FILE NAME: c:\w\work\pds\jefferson\111926\10\02\02\SSNA-Cover_Sig.dgn

Prepared By: Susan Poe
 DISTRICT STUDIES & PLANS ENGINEER

Examined By: Nancy Ho
 DISTRICT LAND ACQUISITION ENGINEER

Examined By: Carroll
 DISTRICT PROGRAM DEVELOPMENT ENGINEER

Examined By: [Signature]
 DISTRICT OPERATIONS ENGINEER

Examined By: _____
 DISTRICT PROJECT IMPLEMENTATION ENGINEER

Examined By: Ben Willis
 DISTRICT CONSTRUCTION ENGINEER

Examined By: Ann Day
 DISTRICT MATERIALS ENGINEER

USER NAME = thomas.jefferson	DESIGNED -	REVISED -
	DRAWN -	REVISED -
	CHECKED -	REVISED -
PLOT DATE = 1/20/2026	DATE -	REVISED -

**STATE OF ILLINOIS
 DEPARTMENT OF TRANSPORTATION**

SIGNATURES

SCALE: SHEET 2 OF 15 SHEETS STA. TO STA.

F.A.S RTE.	SECTION	COUNTY	TOTAL SHEETS	SHEET NO.
904	D9 Bridge Overlay 2026-8	Williamson	15	2
CONTRACT NO. 78B47				
ILLINOIS FED. AID PROJECT				

INDEX OF SHEETS

SHEET NO	DESCRIPTION
1	COVER SHEET
2	SIGNATURE SHEET
3	INDEX OF SHEETS, HIGHWAY STANDARDS, GENERAL NOTES, AND COMMITMENTS
4-6	SUMMARY OF QUANTITIES
7	SCHEDULES
8	GENERAL PLAN AND ELEVATION
9	TYPICAL SECTIONS AND STAGING DETAILS
10	TRAFFIC CONTROL PLAN
11	APPROACH SLAB REPAIR PLAN
12	APPROACH PAVEMENT DETAIL
13	BAR SPLICER DETAIL
14	HMA BUTT-JOINT DETAILS
15	ENTRANCE SIGN DETAIL

HIGHWAY STANDARDS

000001-09	STANDARD SYMBOLS ABBREVIATIONS
001006	DECIMAL OF AN INCH & OF A FOOT
701001-02	OFF-ROAD OPERATIONS, 2L, 2W, MORE THAN 15' (4.5 m) AWAY
701006-05	OFF-ROAD OPERATIONS, 2L, 2W, 15' (4.5 m) TO 24" (600 mm) FROM PAVEMENT EDGE
701011-04	OFF-ROAD MOVING OPERATIONS 2L2W DAY ONLY
701201-05	LANE CLOSURE, 2L, 2W, DAY ONLY, FOR SPEEDS ≥ 45 MPH
701301-04	LANE CLOSURE, 2L2W, SHORT TIME OPERATIONS
701311-03	LANE CLOSURE 2L2W MOVING OPERATIONS DAY ONLY
701316-14	LANE CLOSURE, 2L, 2W, BRIDGE REPAIR
701326-04	LANE CLOSURE, 2L2W, PAVEMENT WIDENING FOR SPEEDS ≥ 45 MPH
701901-11	TRAFFIC CONTROL DEVICES
780001-05	TYPICAL PAVEMENT MARKINGS
862001-01	UNINTERRUPTED POWER SUPPLY (UPS)

GENERAL NOTES

FACTORS USED FOR ESTIMATING PLAN QUANTITIES AREA AS FOLLOWS AND SHALL NOT BE USED AS BASIS OF FINAL QUANTITIES.

ALL HOT MIX ASPHALT 2.016 TONS/CU. YD.

THE QUANTITY OF SHORT TERM PAVEMENT MARKING SHOWN IN THE PLANS IS BASED ON ONE APPLICATION FOR THE HMA SURFACE COURSE

COMMITMENTS: NONE

HMA MIXTURE REQUIREMENTS TABLES

The following HMA mixture requirements are applicable for this project

Locations	Water Proofing (Surgace Course)
Mixture Use(s):	Poly Hot-Mix Asphalt Surface Course, SMA. 9.5, Mix D, N50
AB/PG:	SBS PG 76-22
ABR % (Max):	See Special Provision
Design Air Voids:	4.0 %, 50 Gyration Design
Mixture Composition: (Gradation Mixture)	IL-9.5 mm
Friction Aggregate:	Mix D
Mixture Weight:	112 lbs/Sq Yd/in
Quality Management Program:	QC/QA
Sublot Size:	3,000 tons
Material Transfer Device (Required?)	No

Locations	Water Proofing (Binder Lift)
Mixture Use(s):	Poly Hot-Mix Asphalt Binder Course, IL-4.75, N50
AB/PG:	SBS PG 76-22
ABR % (Max):	See Special Provision
Design Air Voids:	4.0 %, 50 Gyration Design
Mixture Composition: (Gradation Mixture)	IL-4.75FG mm
Friction Aggregate:	None
Mixture Weight:	112 lbs/Sq Yd/in
Quality Management Program:	QC/QA
Sublot Size:	3,000 tons
Material Transfer Device (Required?)	No

REV - MS

MODEL: IL_168 INDEX OF SHEETS (Sheet)
FILE NAME: c:\pwworking\illinois\119261\09\0000x-Shb-Index_GenNotes.dgn

USER NAME = thomas.jefferson	DESIGNED -	REVISED -
	DRAWN -	REVISED -
	CHECKED -	REVISED -
PLOT DATE = 2/2/2026	DATE -	REVISED -

**STATE OF ILLINOIS
DEPARTMENT OF TRANSPORTATION**

**INDEX OF SHEETS, HIGHWAY STANDARDS
GENERAL NOTES AND COMMITMENTS**

SCALE: SHEET 3 OF 15 SHEETS STA. TO STA.

F.A.S. RTE.	SECTION	COUNTY	TOTAL SHEETS	SHEET NO.
904	D9 Bridge Overlay 2026-8	Williamson	15	3
CONTRACT NO. 78B47				
ILLINOIS FED. AID PROJECT				

SUMMARY OF QUANTITIES

COUNTY:	WILLIAMSON CO
ROUTE:	FAS904
FUNDING:	80% FEDERAL 20% STATE
LOCATION:	RURAL
	SN 100 - 0070
	0059

CODE NUMBER	ITEM DESCRIPTION	UNIT	QUANTITY
20200500	EARTH EXCAVATION (WIDENING)	CU YD	56
35400500	PORTLAND CEMENT CONCRETE BASE COURSE WIDENING 10"	SQ YD	200
40600982	HOT-MIX ASPHALT SURFACE REMOVAL - BUTT JOINT	SQ YD	214
40603200	POLYMERIZED HOT-MIX ASPHALT BINDER COURSE, IL-4.75, N50	TON	9
40605022	POLYMERIZED HOT-MIX ASPHALT SURFACE COURSE, STONE MATRIX ASPHALT, 9.5, MIX "D", N50	TON	85
42000080	PAVEMENT CONNECTOR (PCC) FOR BRIDGE APPROACH SLAB	SQ YD	5.8
50102400	CONCRETE REMOVAL	CU YD	1.6
50800205	REINFORCEMENT BARS, EPOXY COATED	POUND	310
50800515	BAR SPLICERS	EACH	8
58100210	FULL LANE SEALANT WATERPROOFING SYSTEM	SQ YD	431
67000400	ENGINEER'S FIELD OFFICE, TYPE A	CAL MO	2
67100100	MOBILIZATION	L SUM	1
70100100	TRAFFIC CONTROL AND PROTECTION, STANDARD 701316	EACH	1

MODEL: IL_166_SQ (Sheet)
FILE NAME: c:\p\work\wbl\jeffersons\119261\19261\09xxxx-SHC-SQ.dgn

REV - MS

SUMMARY OF QUANTITIES - CONT

COUNTY:	WILLIAMSON CO
ROUTE:	FAS 904
FUNDING:	80% FEDERAL 20% STATE
LOCATION:	RURAL
	SN 100 - 0070
	0059

CODE NUMBER	ITEM DESCRIPTION	UNIT	QUANTITY
70100450	TRAFFIC CONTROL AND PROTECTION, STANDARD 701201	L SUM	1
70100500	TRAFFIC CONTROL AND PROTECTION, STANDARD 701326	L SUM	1
70103015	TRAFFIC CONTROL SURVEILLANCE	CAL DA	6
70106500	TEMPORARY BRIDGE TRAFFIC SIGNALS	EACH	1
70106700	TEMPORARY RUMBLE STRIPS	EACH	6
70107025	CHANGEABLE MESSAGE SIGN	CAL DA	28
70300100	SHORT TERM PAVEMENT MARKING	FOOT	76
70300150	SHORT TERM PAVEMENT MARKING REMOVAL	SQ FT	26
70300221	TEMPORARY PAVEMENT MARKING - LINE 4" PAINT	FOOT	2,474
* 78001110	PAINT PAVEMENT MARKING - LINE 4"	FOOT	2,474
78300200	RAISED REFLECTIVE PAVEMENT MARKER REMOVAL	EACH	10
78300201	PAVEMENT MARKING REMOVAL - GRINDING	SQ FT	25
* 86200300	UNINTERRUPTABLE POWER SUPPLY, EXTENDED	EACH	1

* SPECIALTY ITEM

MODEL: IL 106 SDC-1 [Sheet]
FILE NAME: c:\p\work\pav\td\jeffersons\119261\106xxxx-SHC-SDC.dgn

REV - MS

USER NAME = thomas.jefferson	DESIGNED -	REVISED -	STATE OF ILLINOIS DEPARTMENT OF TRANSPORTATION	SUMMARY OF QUANTITIES	F.A.S RTE.	SECTION	COUNTY	TOTAL SHEETS	SHEET NO.	
	DRAWN -	REVISED -			904	D9 Bridge Overlay 2026-8	Williamson	15	5	
	CHECKED -	REVISED -			CONTRACT NO. 78B47					
PLOT DATE = 1/20/2026	DATE -	REVISED -			SCALE:	SHEET 5	OF 15	SHEETS	STA.	TO STA.

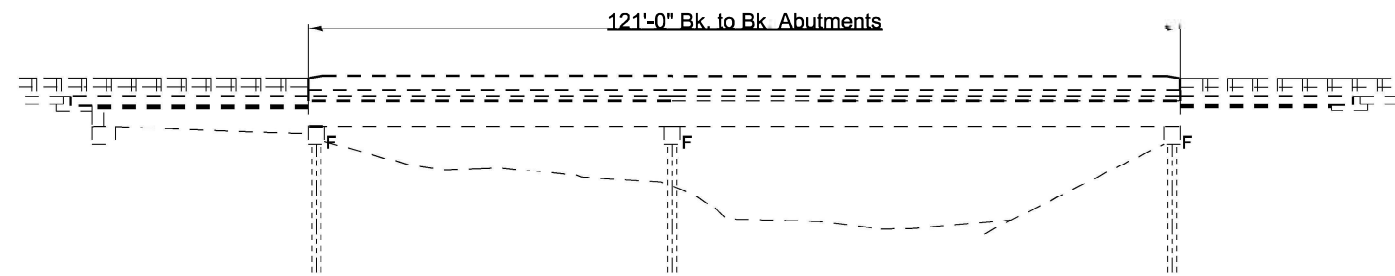
GENERAL NOTES

Reinforcement bars designated (E) shall be epoxy coated.

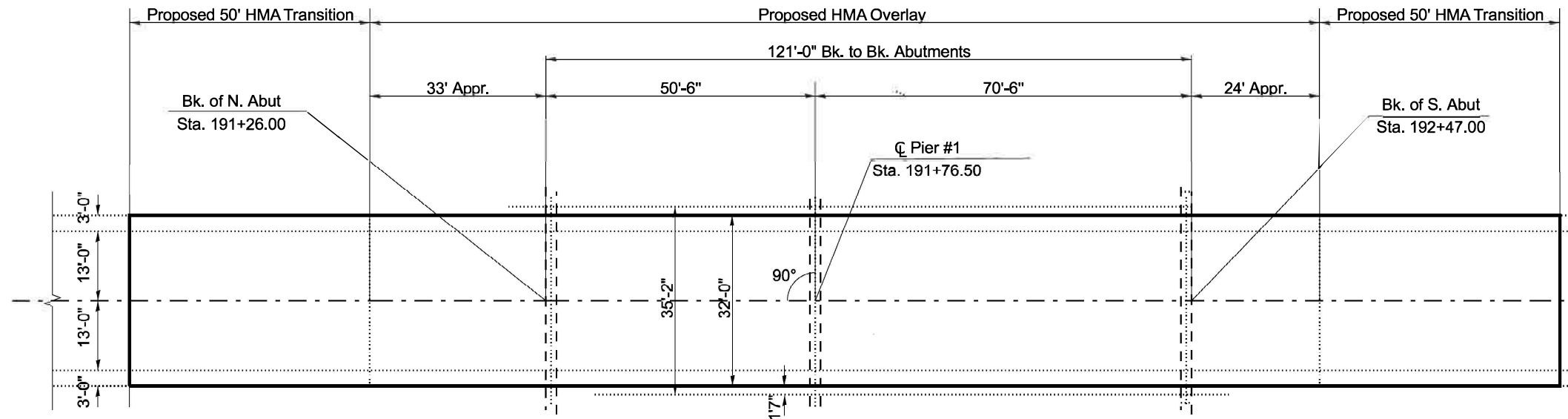
Plan dimensions and details relative to existing structures have been taken from existing plans are subject to nominal construction variations. The Contractor shall verify existing dimensions and details affecting new construction and make necessary approved adjustments prior to construction or ordering of materials. Such variations shall not be cause for additional compensation for a change in scope of the work, however, the Contractor will be paid for the quantity actually furnished at the unit price bid for the work.

Existing reinforcement bars extending into removal area shall be cleaned, straightened and incorporated into the new construction. Any reinforcement bars that are damaged during concrete removal operations shall be replaced using an approved bar splicer or anchorage system at the contractor's expense.

Joint openings shall be adjusted according to Article 520.04 of the Standard Specifications when the deck is poured at an ambient temperature other than 50 deg F.



ELEVATION



PLAN

ANTICIPATED CONSTRUCTION SEQUENCE

1. Install Base Course Widening 10"
2. Setup TC&P 701316
3. Perform Approach Slab Repair (Partial Depth)
4. Install Proposed HMA bridge deck overlay with FLS waterproofing system
5. Switch TC&P 701316 from Stage I to Stage II & Repeat Work
6. Remove TC&P 701316

SCOPE OF WORK

- Approach Slab Repair (Partial Depth)
- HMA Overlay - FLS
- Pavement connector PCC for Bridge Appr Slab
- Polymer Nosing

DESIGN STRESSES

$f_c = 4000$ psi
 $f_y = 60,000$ psi (Reinforcement)

TOTAL BILL OF MATERIALS

ITEM	UNIT	QUANTITY
FULL LANE SURFACE WATERPROOFING SYSTEM	SQ. YD.	431
* POLY HMA SURFACE COURSE SMA, 9.5, MIX "D", N50	TON	85
APPROACH SLAB REPAIR (PARTIAL DEPTH)	SQ. YD.	13.1
REINFORCEMENT BARS, EPOXY COATED	POUND	310
BAR SPLICER	EACH	9
POLYMER CONCRETE	CU. FT.	6.5
PAVEMENT CONNECTOR (PCC) FOR BRIDGE APPROACH SLAB	SQ. YD.	5.8
CONCRETE REMOVAL	CU. YD.	1.6

* SEE ROADWAY SCHEDULES FOR APPROACH AND ROADWAY RESURFACING QUANTITIES



Expires November 30, 2026

Justin W. Mann

**GENERAL PLAN & ELEVATION
 IL 166 OVER SOUTH FORK
 SALINE RIVER
 FAP 904 - D9 BRIDGE OVERLAY 2026-8
 WILLIAMSON COUNTY
 STRUCTURE NO. 100-0070**

MODEL: GENERAL PLAN AND ELEVATION (Sheet)
 FILE NAME: c:\pwworkspace\kirby\111926112078847-SubD-Types.dgn

USER NAME = Ehren.Kirby	DESIGNED -	REVISED -
	DRAWN -	REVISED -
	CHECKED -	REVISED -
PLOT DATE = 3/12/2026	DATE -	REVISED -

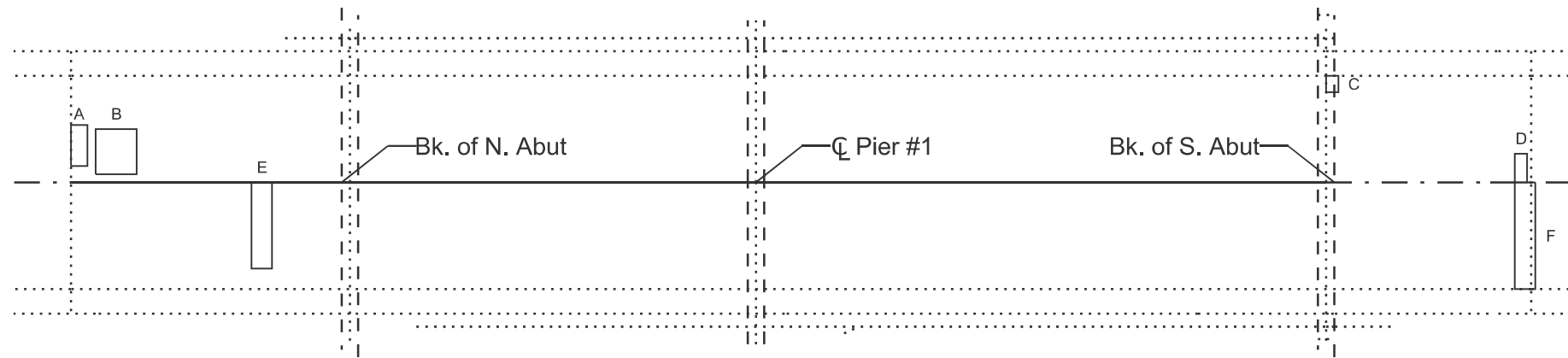
**STATE OF ILLINOIS
 DEPARTMENT OF TRANSPORTATION**

**GENERAL PLAN AND ELEVATION
 SN 100-0070**

SCALE: SHEET 8 OF 15 SHEETS STA. TO STA.

F.A.S. RTE.	SECTION	COUNTY	TOTAL SHEETS	SHEET NO.
904	D9 Bridge Overlay 2026-8	Williamson	15	8

CONTRACT NO. 78B47
 ILLINOIS FED. AID PROJECT



PLAN

GENERAL NOTES

Areas of approach slab repair are an estimate. The Resident Engineer shall determine final patch locations and quantities in the field before patching operations begin and mark on as-built plans. The Engineer shall show actual locations and size of deck repairs on As-Built Plans

APPROACH SLAB REPAIR (PARTIAL DEPTH)

REPAIR	LOCATION	REPAIR SIZE	CENTERLINE OFFSET	AREA
	NORTH APPROACH END = 0			
	FT	FT X FT	FT	SQ YD
IL 166 NORTHBOUND				
A	0.0	2.0 x 5.0	2.0	1.1
B	3.0	5.0 x 5.5	1.0	3.1
C	153.0	1.5 x 2.0	11.0	0.3
D	176.0	1.5 x 3.5	0.0	0.6
NORTHBOUND SUBTOTAL				5.1
IL 166 SOUTHBOUND				
E	22.0	2.5 x 10.5	0.0	2.9
F	176.0	3.5 x 13.0	0.0	5.1
SOUTHBOUND SUBTOTAL				8.0
TOTAL				13.1

BILL OF MATERIALS

ITEM	UNIT	QUANTITY
APPROACH SLAB REPAIR (PARTIAL DEPTH)	SQ YD	13.1

MODEL: Partial-Depth Patching (Sheet)
FILE NAME: c:\p\work\wv\wv\jeffersons\119261\0978B47-SHD-Typicals.dgn

USER NAME = thomas.jefferson	DESIGNED -	REVISED -
	DRAWN -	REVISED -
	CHECKED -	REVISED -
PLOT DATE = 3/10/2026	DATE -	REVISED -

**STATE OF ILLINOIS
DEPARTMENT OF TRANSPORTATION**

APPROACH SLAB REPAIR PLAN

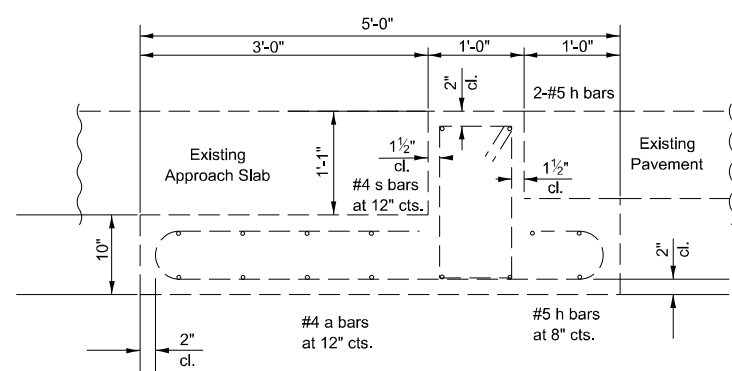
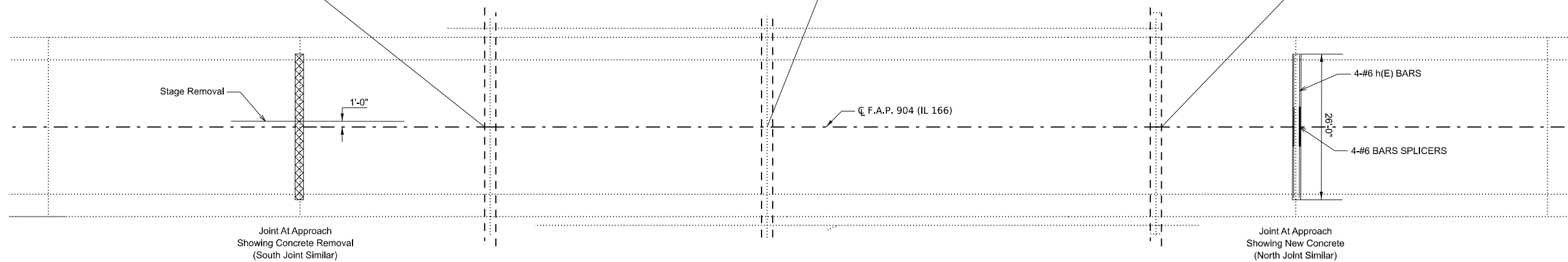
SCALE: SHEET 11 OF 15 SHEETS STA. TO STA.

F.A.S RTE.	SECTION	COUNTY	TOTAL SHEETS	SHEET NO.
904	D9 Bridge Overlay 2026-8	Williamson	15	11
CONTRACT NO. 78B47				
ILLINOIS FED. AID PROJECT				

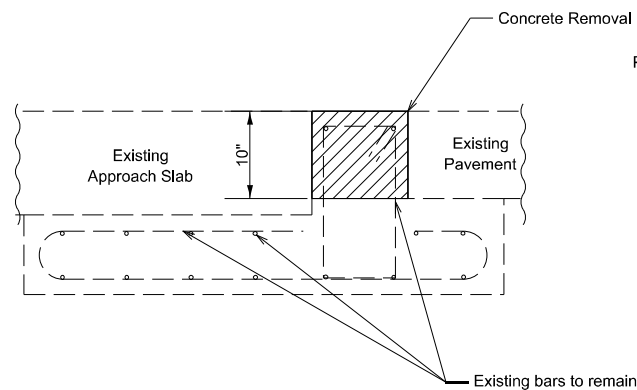
Bk. of N. Abut
Sta. 191+26.00

Bk. of S. Abut
Sta. 192+47.00

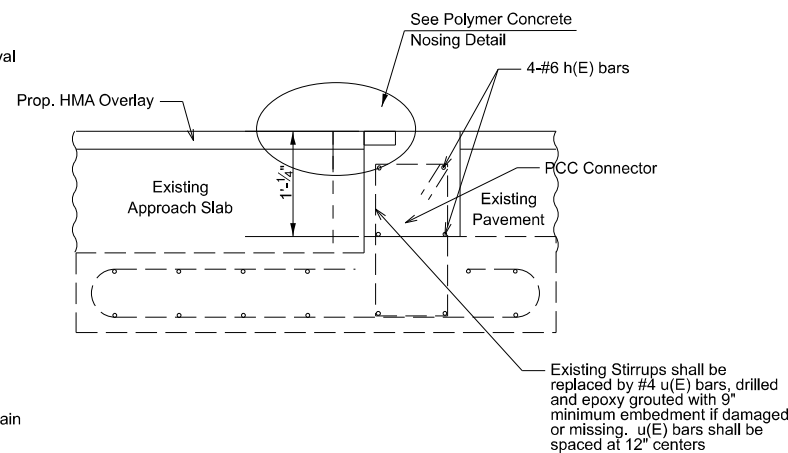
☐ Pier #1
Sta. 191+76.50



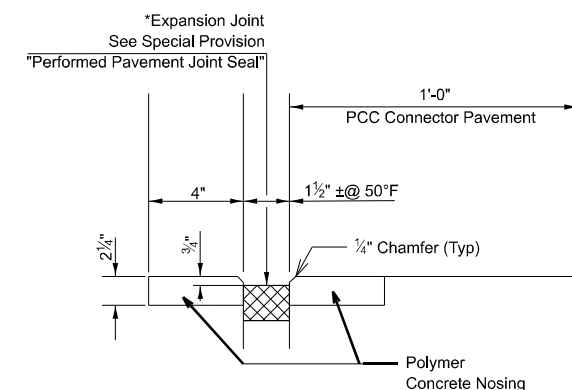
EXISTING TRANSVERSE BASE PAD



TRANSVERSE BASE PAD REMOVAL



PROPOSED TRANSVERSE BASE PAD



* 26 feet of Preformed Pavement Joint Sealer is required at each PCC Connector.
Cost Included With Pavement Connector (PCC) For Bridge Approach Slab.

PROPOSED POLYMER CONCRETE NOSING

BILL OF MATERIALS (TWO APPROACH JOINTS)

BAR	NO	SIZE	LENGTH	SHAPE
h (E)	18	#6	12'-10"	—

ITEM	UNIT	QUANTITY
REINFORCEMENT BARS, EPOXY COATED	POUND	310
POLYMER CONCRETE	CU. FT.	6.5
PAVEMENT CONNECTOR (PCC) FOR BRIDGE APPROACH SLAB	SQ. YD.	5.8
CONCRETE REMOVAL	CU. YD.	1.6
BAR SPLICER	EACH	8

MODEL: Approach Pavement Details (Sheet)
FILE NAME: c:\p\work\wiscok\kfy\aa\111926\1D978B47-SubD-Typicals.dgn

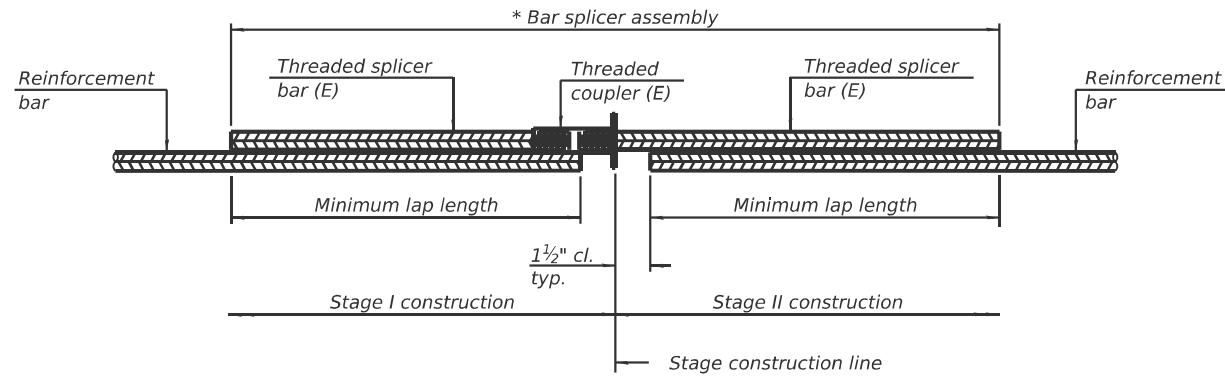
USER NAME = thomas.jefferson	DESIGNED -	REVISED -
	DRAWN -	REVISED -
	CHECKED -	REVISED -
PLOT DATE = 3/11/2026	DATE -	REVISED -

STATE OF ILLINOIS
DEPARTMENT OF TRANSPORTATION

APPROACH PAVEMENT DETAIL

SCALE: SHEET 12 OF 15 SHEETS STA. TO STA.

F.A.S. RTE.	SECTION	COUNTY	TOTAL SHEETS	SHEET NO.
904	D9 Bridge Overlay 2026-8	Williamson	15	12
CONTRACT NO. 78B47				
ILLINOIS FED. AID PROJECT				



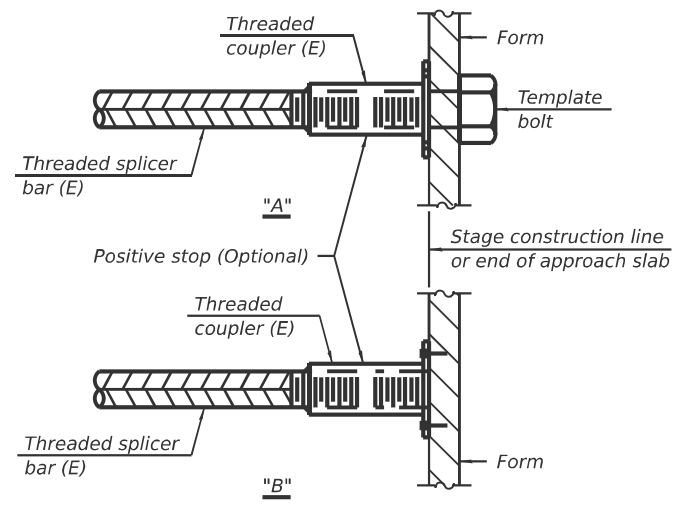
STANDARD BAR SPLICER ASSEMBLY PLAN

Only bar splicer assemblies as presented on the approved QPL list may be used.

Threaded splicer bar length = min. lap length + 1 1/2" + thread length

* Epoxy not required on Bar Splicer Assembly components used in conjunction with black bars.

Location	Bar size	No. assemblies required	Minimum lap length
Connector/Transverse Pad	#6	8	3'-3"

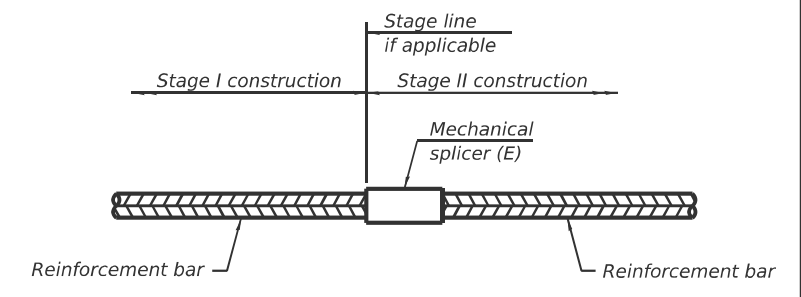


INSTALLATION AND SETTING METHODS

"A" : Set bar splicer assembly by means of a template bolt.

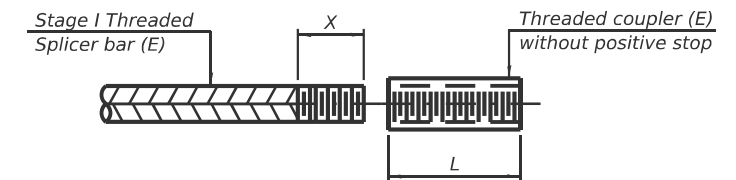
"B" : Set bar splicer assembly by nailing to wood forms or cementing to steel forms.

(E) : Indicates epoxy coating.



STANDARD MECHANICAL SPLICER

Location	Bar size	No. assemblies required



THREADING OF ASSEMBLIES

The threaded length "X" shall be no more than L/2. The bar should be tightened until 0-1 thread(s) is/are exposed.

Notes:

- Splicer bars shall be deformed with threaded ends and have a minimum 60 ksi yield strength.
- All reinforcement shall be lapped and tied to the splicer bars.
- Bar splicer assemblies shall be epoxy coated according to the requirements for reinforcement bars. See Section 508 of the Standard Specifications.
- See approved list of bar splicer assemblies and mechanical splicers for alternatives.

MODEL: BAR SPLICER ASSEMBLY (Sheet)
FILE NAME: c:\p\work\project\refersons\119261\09xxxxx\SH-District\Std.dgn

USER NAME = thomas.jefferson	DESIGNED -	REVISED -
	DRAWN -	REVISED -
	CHECKED -	REVISED -
PLOT DATE = 3/11/2026	DATE -	REVISED -

**STATE OF ILLINOIS
DEPARTMENT OF TRANSPORTATION**

**BAR SPLICER ASSEMBLY AND MECHANICAL SPLICER DETAILS
STRUCTURE NUMBER 100-0070**

SCALE: SHEET 13 OF 15 SHEETS STA. TO STA.

F.A.S RTE.	SECTION	COUNTY	TOTAL SHEETS	SHEET NO.
904	D9 Bridge Overlay 2026-8	Williamson	15	13
CONTRACT NO. 78B47			ILLINOIS FED. AID PROJECT	

