

STATE OF ILLINOIS  
DEPARTMENT OF TRANSPORTATION

FAP RTE.	SECTION	COUNTY	TOTAL SHEETS	SHEET NO.
331	D9 BRIDGE OVERLAY 2026-11	SALINE	18	1
		ILLINOIS	CONTRACT NO. 78B87	

FOR INDEX OF SHEETS, SEE SHEET NO. 3  
FOR SUMMARY OF QUANTITIES, SEE SHEET NO. 4-5

**TRAFFIC DATA**

FAP 331 (IL 13)  
EXISTING ADT = 4225 (2025)  
%SU = 169 (4.00%)  
%MU = 169 (4.00%)

**TOWNSHIPS**

CARRIER MILLS TOWNSHIP

DESIGN DESIGNATION : OTHER PRINCIPAL ARTERIAL

COORDINATE SYSTEM : IL STATE PLANE, EAST, NAD 1983  
POSTED SPEED : 65 MPH

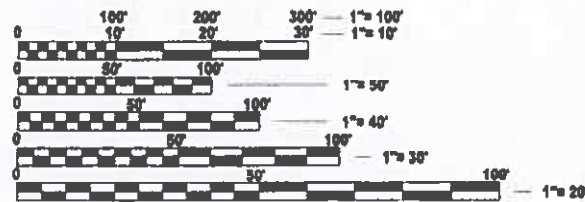
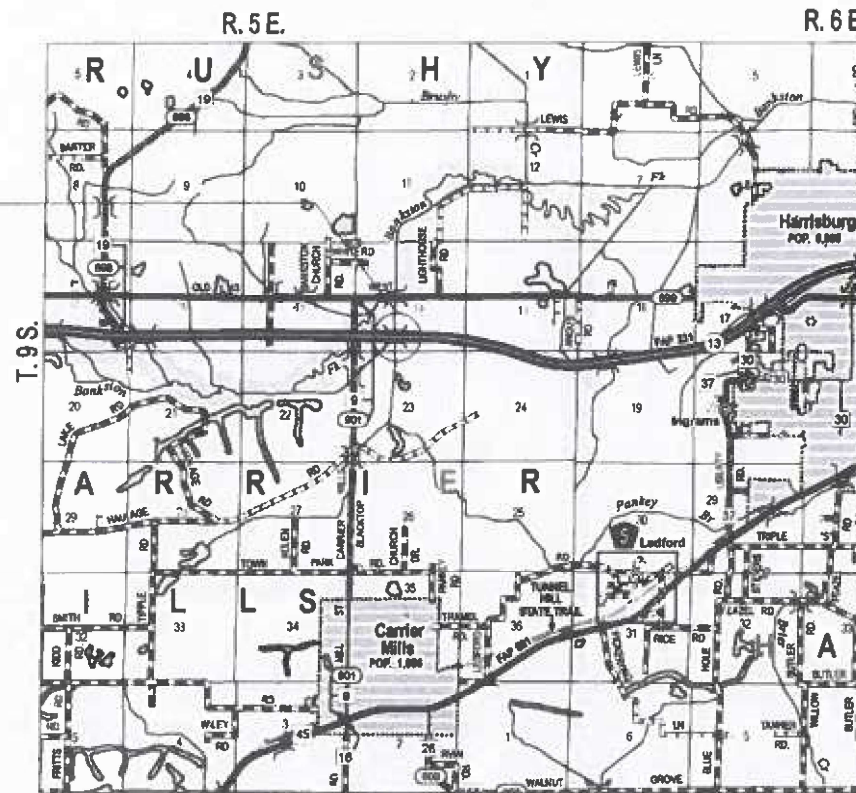
**PROPOSED  
HIGHWAY PLANS**

FAP ROUTE 331 (IL 13)  
D9 BRIDGE OVERLAY 2026-11  
FAP 331 (IL 13) OVER BANKSTON FORK  
BRIDGE REPAIR AND OVERLAY  
SALINE COUNTY

C-99-132-25



BEGIN PROJECT  
STA. 773+52.00  
END PROJECT  
STA. 775+32.00  
STRUCTURE NUMBER  
083-0052 & 083-0053



FULL SIZE PLANS HAVE BEEN PREPARED USING STANDARD ENGINEERING SCALES. REDUCED SIZED PLANS WILL NOT CONFORM TO STANDARD SCALES. IN MAKING MEASUREMENTS ON REDUCED PLANS, THE ABOVE SCALES MAY BE USED.

J.U.L.I.E.  
JOINT UTILITY LOCATION INFORMATION FOR EXCAVATION  
1-800-892-0123  
OR 811

PROJECT ENGINEER: EHREN KIRBY  
PROJECT DESIGNER: VEENSTRA & KIMM, INC.

CONTRACT NO. 78B87

LOCATION MAP

GROSS LENGTH = 180.00 FT. = 0.034 MILES (SN 083-0052 - EASTBOUND)  
GROSS LENGTH = 180.00 FT. = 0.034 MILES (SN 083-0053 - WESTBOUND)  
NET LENGTH = 360.00 FT. = 0.068 MILES



Christopher P. Kohlman 1/6/26  
EXPIRATION DATE 11/30/2027

STATE OF ILLINOIS  
DEPARTMENT OF TRANSPORTATION

SUBMITTED Jan 7 2026  
Lora S. Romain  
REGIONAL ENGINEER  
March 20 2026  
[Signature]  
ENGINEER OF DESIGN AND ENVIRONMENT  
March 20 2026  
[Signature]  
DIRECTOR OF HIGHWAYS PROJECT IMPLEMENTATION

PRINTED BY THE AUTHORITY  
OF THE STATE OF ILLINOIS





MODEL: D:\p\h\k...  
 FILE NAME: W:\p\c\1\p\h\k\0700770-0002-113\_Bridg...  
 Designer: S. Salas, Co. VCB(CAD), Designer: S. Salas, Co. VCB(CAD)

CODE NO.	ITEM	UNIT	TOTAL QUANTITY	CONSTRUCTION CODE	
				100% STATE	100% STATE
				RURAL	RURAL
				BRIDGE	BRIDGE
				0013	0013
S.N. 083-0052	S.N. 083-0053				
35101400	AGGREGATE BASE COURSE, TYPE B	TON	6	3	3
50102400	CONCRETE REMOVAL	CU YD	1.4	0.7	0.7
50200100	STRUCTURE EXCAVATION	CU YD	9.6	4.8	4.8
50300225	CONCRETE STRUCTURES	CU YD	1.2	0.6	0.6
52200020	TEMPORARY SOIL RETENTION SYSTEM	SQ FT	132	68	64
53016000	DECK SLAB REPAIR (PARTIAL)	SQ YD	9	7	2
53212754	STRUCTURAL REPAIR OF CONCRETE (DEPTH EQUAL TO OR LESS THAN 5 INCHES)	SQ FT	56	30	26
67000400	ENGINEER'S FIELD OFFICE, TYPE A	CAL MO	6	3	3
67100100	MOBILIZATION	L SUM	1	0.5	0.5
70100207	TRAFFIC CONTROL AND PROTECTION, STANDARD 701402	EACH	2	1	1
70103815	TRAFFIC CONTROL SURVEILLANCE	CAL DA	14	7	7
70107006	PAVEMENT MARKING BLACKOUT TAPE, 6"	FOOT	3380	1690	1690
70107025	CHANGEABLE MESSAGE SIGN	CAL DA	28	14	14
70300150	SHORT TERM PAVEMENT MARKING REMOVAL	SQ FT	1690	845	845
70400100	TEMPORARY CONCRETE BARRIER	FOOT	1000	500	500

REV - MS



DESIGNED -	CPK	REVISED -	
DRAWN -	DMS	REVISED -	
CHECKED -	CPK	REVISED -	
DATE -	11-30-2025	REVISED -	

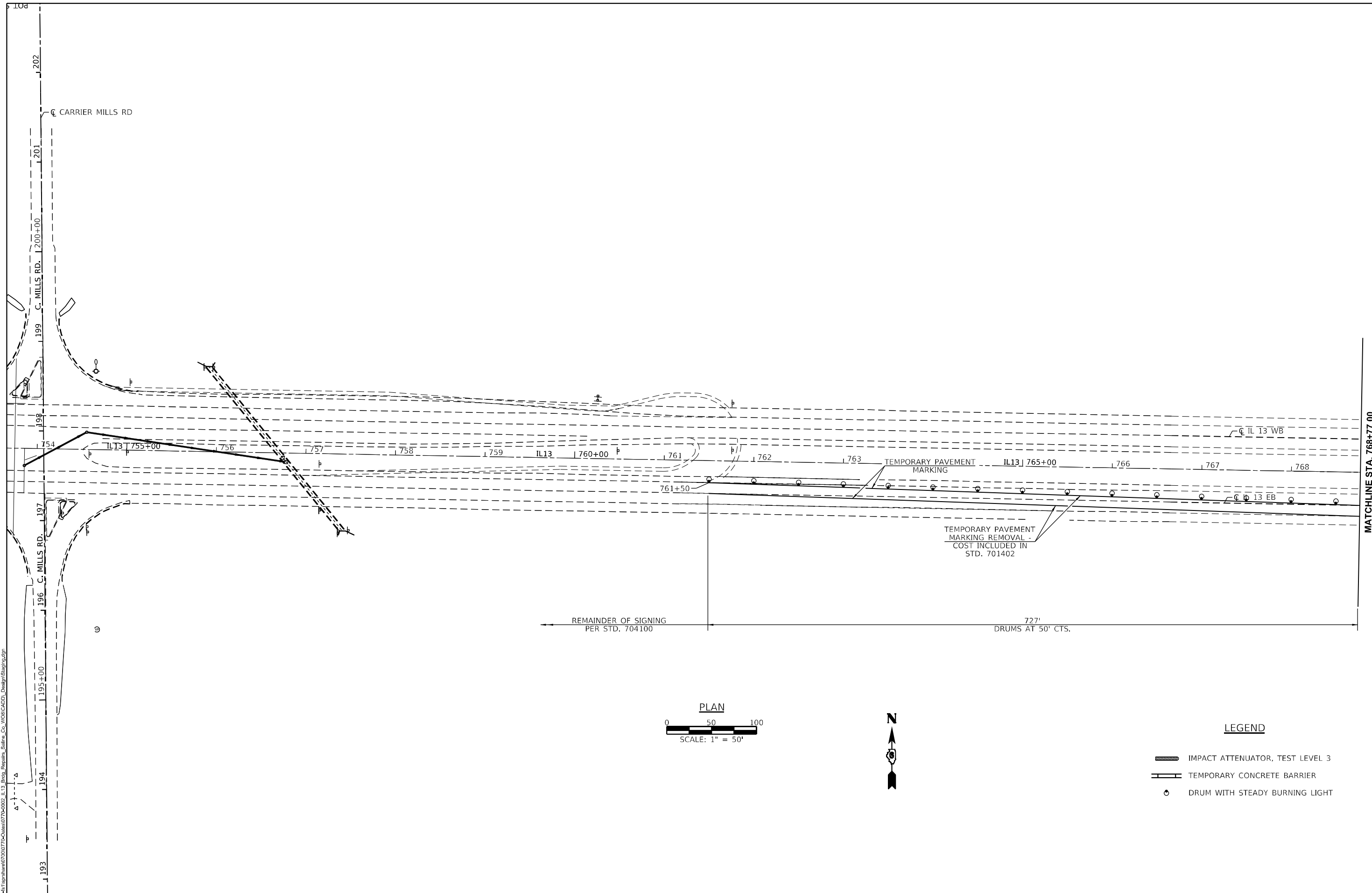
**STATE OF ILLINOIS  
DEPARTMENT OF TRANSPORTATION**

**SUMMARY OF QUANTITIES**

SCALE: SHEET 1 OF 2 SHEETS STA. TO STA.

F.A.P. RTE.	SECTION	COUNTY	TOTAL SHEETS	SHEET NO.
331	D9 BRIDGE OVERLAY 2026-11	SALINE	18	4
CONTRACT NO. 78B87			ILLINOIS FED. AID PROJECT	





MODEL: D:\info\...  
 FILE NAME: ...  
 A Kleinfelder Company



DESIGNED -	CPK	REVISED -	
DRAWN -	DMS	REVISED -	
CHECKED -	CPK	REVISED -	
DATE -	11-30-2025	REVISED -	

**STATE OF ILLINOIS**  
**DEPARTMENT OF TRANSPORTATION**

**STAGE I CONSTRUCTION PLAN**

SCALE: SHEET 1 OF 4 SHEETS STA. TO STA.

**LEGEND**

- IMPACT ATTENUATOR, TEST LEVEL 3
- TEMPORARY CONCRETE BARRIER
- DRUM WITH STEADY BURNING LIGHT

F.A.P. RTE.	SECTION	COUNTY	TOTAL SHEETS	SHEET NO.
331	D9 BRIDGE OVERLAY 2026-11	SALINE	18	6
CONTRACT NO. 78B87				
ILLINOIS FED. AID PROJECT				

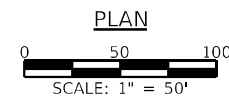
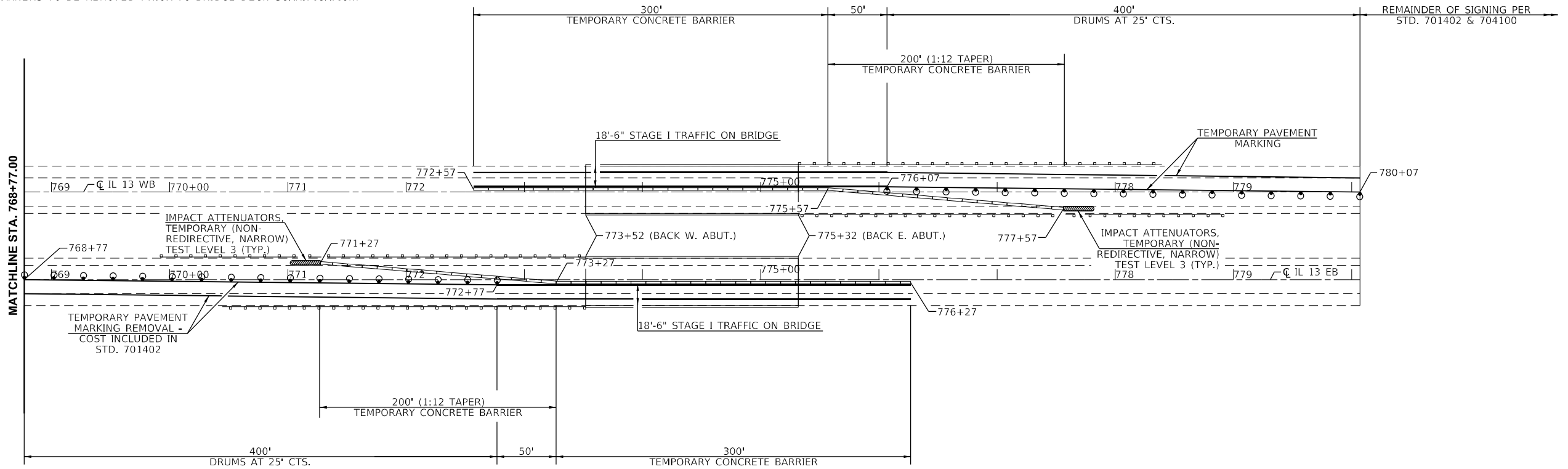
TEMPORARY PAVEMENT MARKING*	
LOCATION	TEMPORARY PAVEMENT MARKING - LINE 4" - TYPE IV TAPE
	FOOT
EASTBOUND STAGE I	
STA. 761+50 TO STA. 776+27 LT. EDGE (WHITE)	1477
STA. 761+50 TO STA. 776+27 RT. EDGE (YELLOW)	1477
WESTBOUND STAGE I	
STA. 772+57 TO STA. 795+07 LT. EDGE (YELLOW)	2250
STA. 772+57 TO STA. 795+07 RT. EDGE (WHITE)	2250
TOTAL	7454

TEMPORARY CONCRETE BARRIER AND IMPACT ATTENUATORS		
LOCATION	IMPACT ATTENUATORS, TEMPORARY (NON-REDIRECTIVE, NARROW), TEST LEVEL 3	TEMPORARY CONCRETE BARRIER
	EACH	FOOT
STA. 771+01.4 TO STA. 771+27 EB	1	
STA. 771+27 TO STA. 776+27 EB		500
STA. 777+57 TO STA. 777+82.6 WB	1	
STA. 772+57 TO STA. 777+57 WB		500
TOTAL	2	1000

PAVEMENT MARKING BLACKOUT TAPE		
LOCATION	PAVEMENT MARKING BLACKOUT TAPE 6"	SHORT TERM PAVEMENT MARKING REMOVAL
	FOOT	SQ FT
EASTBOUND		
STA. 768+77 TO STA. 776+27 LT. EDGE	750	375
STA. 768+77 TO STA. 776+27 CENTERLINE	190	95
STA. 768+77 TO STA. 776+27 RT. EDGE	750	375
WESTBOUND		
STA. 772+57 TO STA. 780+07 LT. EDGE	750	375
STA. 772+57 TO STA. 780+07 CENTERLINE	190	95
STA. 772+57 TO STA. 780+07 RT. EDGE	750	375
TOTAL	3380	1690

\* - FOR INFORMATION ONLY COST INCLUDED IN STANDARD 701402

NOTE: RAISED REFLECTIVE PAVEMENT MARKERS TO BE REMOVED PRIOR TO BRIDGE DECK SCARIFICATION.



LEGEND

	IMPACT ATTENUATOR, TEST LEVEL 3
	TEMPORARY CONCRETE BARRIER
	DRUM WITH STEADY BURNING LIGHT

MODEL: D:\info\...  
 FILE NAME: ...



DESIGNED -	CPK	REVISED -	
DRAWN -	DMS	REVISED -	
CHECKED -	CPK	REVISED -	
DATE -	11-30-2025	REVISED -	

STATE OF ILLINOIS  
DEPARTMENT OF TRANSPORTATION

STAGE I CONSTRUCTION PLAN

SCALE: SHEET 2 OF 4 SHEETS STA. TO STA.

F.A.P. RTE.	SECTION	COUNTY	TOTAL SHEETS	SHEET NO.
331	D9 BRIDGE OVERLAY 2026-11	SALINE	18	7
CONTRACT NO. 78B87				
ILLINOIS FED. AID PROJECT				

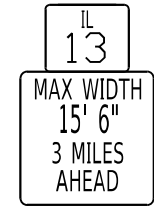
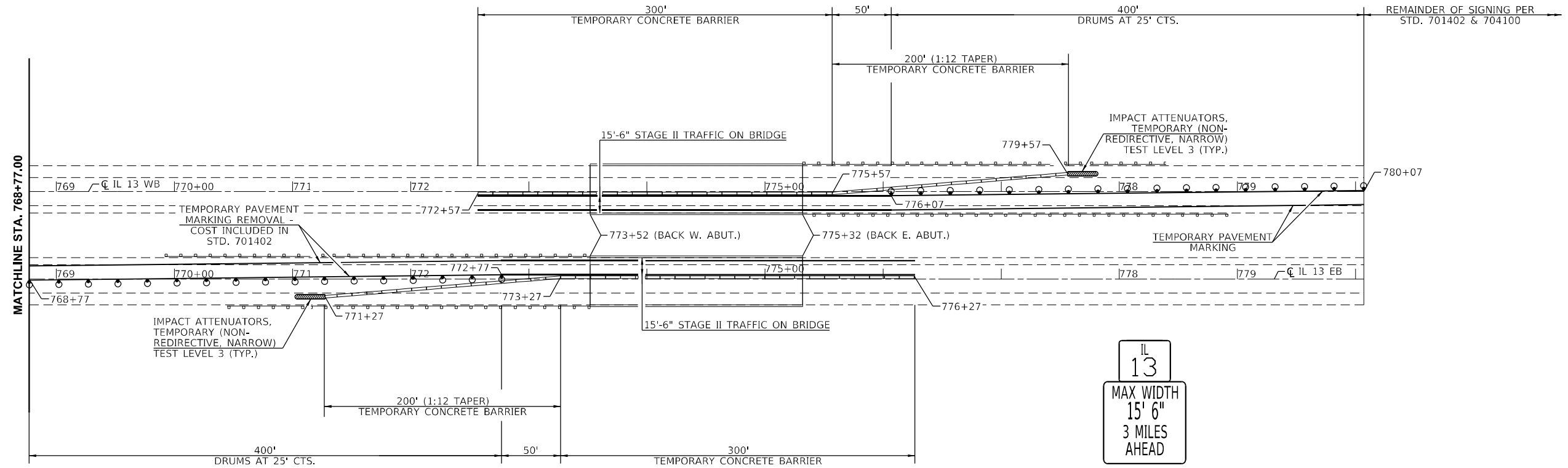


TEMPORARY PAVEMENT MARKING*	
LOCATION	TEMPORARY PAVEMENT MARKING - LINE 4" - TYPE IV TAPE
	FOOT
EASTBOUND STAGE II	
STA. 761+50 TO STA. 776+27 LT. EDGE (YELLOW)	1477
STA. 761+50 TO STA. 776+27 RT. EDGE (WHITE)	1477
WESTBOUND STAGE II	
STA. 772+57 TO STA. 795+07 LT. EDGE (WHITE)	2250
STA. 772+57 TO STA. 795+07 RT. EDGE (YELLOW)	2250
TOTAL	7454

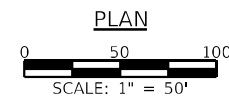
RELOCATE TEMPORARY CONCRETE BARRIER AND IMPACT ATTENUATORS		
LOCATION	IMPACT ATTENUATORS, RELOCATE (NON-REDIRECTIVE, NARROW), TEST LEVEL 3	RELOCATE TEMPORARY CONCRETE BARRIER
	EACH	FOOT
STA. 771+01.4 TO STA. 771+27 EB	1	
STA. 771+27 TO STA. 776+27 EB		500
STA. 777+57 TO STA. 777+82.6 WB	1	
STA. 772+57 TO STA. 777+57 WB		500
TOTAL	2	1000

PAINT PAVEMENT MARKING - LINE 6"			
LOCATION	EDGE (YELLOW)	CENTERLINE (WHITE SKIP-DASH)	EDGE (WHITE)
	FOOT	FOOT	FOOT
EASTBOUND			
STA. 773+52 TO STA. 775+32 CENTERLINE		50	
WESTBOUND			
STA. 773+52 TO STA. 775+32 CENTERLINE		50	
TOTAL		100	

\* - FOR INFORMATION ONLY COST INCLUDED IN STANDARD 701402



**WIDTH RESTRICTION SIGN**  
 W12-1103 48" X 48" WITH 15' 6"  
 LETTERS BLACK ON ORANGE  
 MAX WIDTH & 3 MILES AHEAD  
 BLACK ON WHITE WITH M3-1 30X15  
 AND M1-1100 30X24  
 COST INCLUDED IN STD. 701402



**LEGEND**

- IMPACT ATTENUATOR, TEST LEVEL 2
- TEMPORARY CONCRETE BARRIER
- DRUM WITH STEADY BURNING LIGHT

MODEL: D:\info\...  
 FILE NAME: ...



DESIGNED -	CPK	REVISED -	
DRAWN -	DMS	REVISED -	
CHECKED -	CPK	REVISED -	
DATE -	11-30-2025	REVISED -	

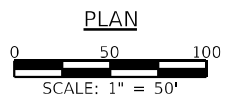
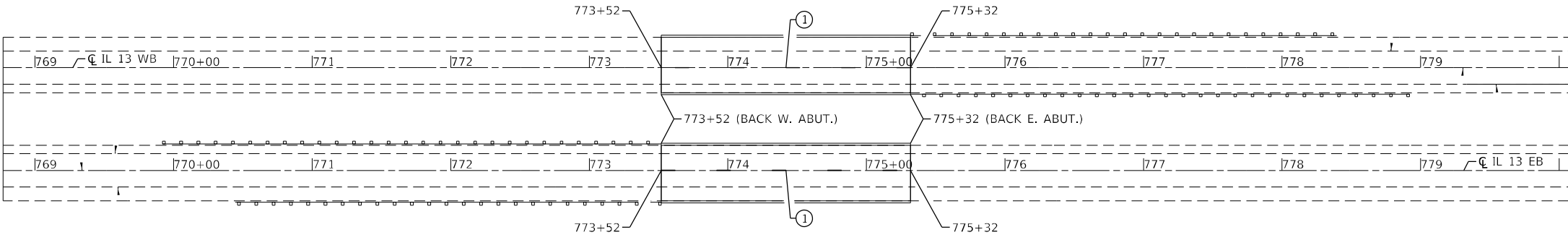
**STATE OF ILLINOIS  
 DEPARTMENT OF TRANSPORTATION**

**STAGE II CONSTRUCTION PLAN**

SCALE: SHEET 4 OF 4 SHEETS STA. TO STA.

F.A.P. RTE.	SECTION	COUNTY	TOTAL SHEETS	SHEET NO.
331	D9 BRIDGE OVERLAY 2026-11	SALINE	18	9
CONTRACT NO. 78B87				
ILLINOIS FED. AID PROJECT				

LEGEND	
①	- PAINT PAVEMENT MARKING - LINE 4" (WHITE SKIP DASH)



MODEL: D:\info\...  
 FILE NAME: ...



DESIGNED -	CPK	REVISED -	
DRAWN -	DMS	REVISED -	
CHECKED -	CPK	REVISED -	
DATE -	11-30-2025	REVISED -	

**STATE OF ILLINOIS  
DEPARTMENT OF TRANSPORTATION**

**PAVEMENT MARKING PLAN**

SCALE: SHEET 1 OF 1 SHEETS STA. TO STA.

F.A.P. RTE.	SECTION	COUNTY	TOTAL SHEETS	SHEET NO.
331	D9 BRIDGE OVERLAY 2026-11	SALINE	18	10
CONTRACT NO. 78B87				
ILLINOIS			FED. AID PROJECT	

Existing Structure:  
Structure Number 083-0052 (E.B.) & 083-0053(W.B.) were originally constructed in 1997 as part of F.A.P. Route 331, Section (8-1)B-1 at Sta. 774+42. Both structures are built with a out-to-out deck width of 43'-2" and a 7½" thick slab providing a clear roadway width of 40'-0". The back-to-back abutment length is 180'-0". The existing bridges consist of three span continuous 33" Steel I beams, supported by solid encased pile bent piers and stub abutments.

Traffic will be maintained using Stage Construction.

No Salvage.

### INDEX OF SHEETS

1. General Plan and Elevation
2. Cross Sections & Staging Details.
3. Deck Slab Repair Details.
4. East Abutment Repair Details (E.B.).
5. West Abutment Repair Details (E.B.).
6. East Abutment Repair Details (W.B.).
7. West Abutment Repair Details (W.B.).
8. Temporary Concrete Barrier Details.

### SCOPE OF WORK

- (A) - ¾" Bridge Deck Scarification and ¾" Thin Polymer Overlay, see Sheet 2 of 8.
- (B) - Deck Slab Repair, see Sheet 3 of 8.
- (C) - East Abutment Repair on EB Structure, see Sheet 4 of 8.
- (D) - West Abutment Repair on EB Structure, see Sheet 5 of 8.
- (E) - East Abutment Repair on WB Structure, see Sheet 6 of 8.
- (F) - West Abutment Repair on WB Structure, see Sheet 7 of 8.
- (G) - Locate, expose, and replace concrete headwalls for pipe underdrains.

### GENERAL NOTES

Plan dimensions and details relative to the existing structure have been taken from existing plans and are subject to nominal construction variations. The Contractor shall field verify existing dimensions and details affecting new construction and make necessary approved adjustments prior to construction or ordering of materials. Such variations shall not be cause for additional compensation for a change in scope of the work, however, the Contractor will be paid for the quantity actually furnished at the unit price bid for the work.

The repairs in these plans were identified from a visual inspection that was provided by IDOT. The Contractor shall verify the locations and quantities in the field at the direction of the Engineer.

Area of deck slab repairs shown are estimates.

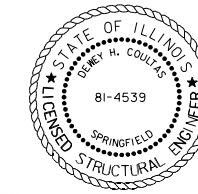
The Engineer shall verify and indicate the actual locations, & dimensions of Approach Slab Repairs, Deck Slab Repairs, and Structural Concrete Repairs less than 5 inches in depth on the As-Built Plans.

The Contractor shall use extreme care during concrete removal so as not to damage the Abutments.

The Contractor may request copies of existing construction plans that are currently on file with the Department. The request shall be in writing with the understanding that any reproduction cost will be at the Contractor's expense at no additional cost to the Department.

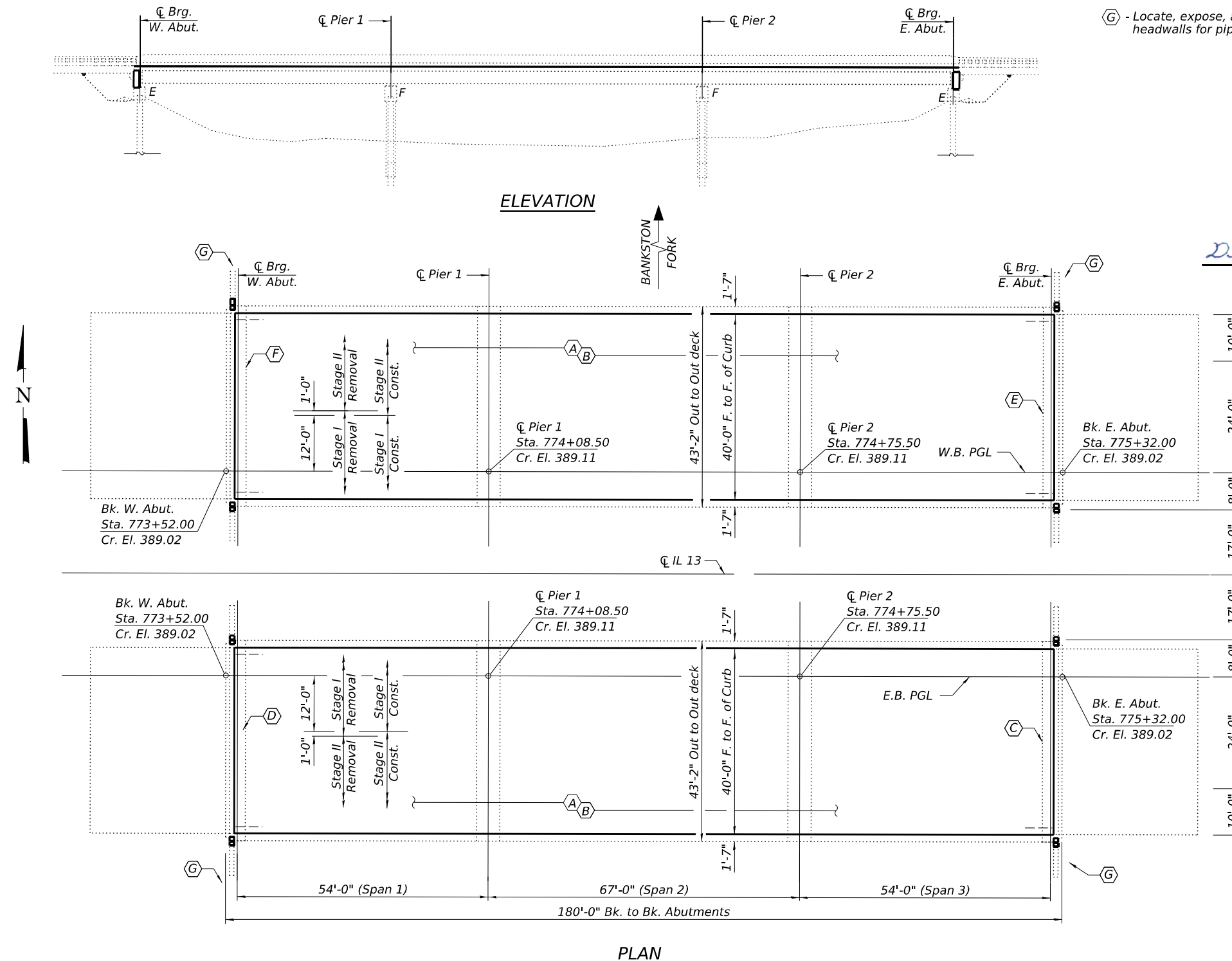
Existing reinforcement bars extending into the removal area shall be cleaned, straightened, and incorporated into the new construction, cost included with Concrete Removal. Any reinforcement bars that are damaged during concrete removal shall be replaced with an approved bar splicer or anchorage system at the contractor's expense.

The existing structural steel coating contains lead. The Contractor shall take appropriate precautions to address the presence of lead on this project.



*Dewey H. Coultas*

Expires: 11/30/2026  
Date: 03/13/2026

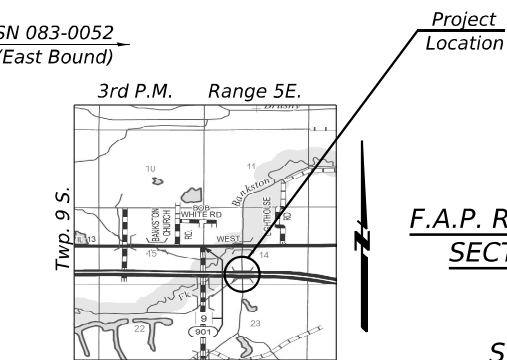


SN 083-0053  
(West Bound)

SN 083-0052  
(East Bound)

### TOTAL BILL OF MATERIAL

ITEM	UNIT	QUANTITY
Aggregate Base Course, Type B	Ton	6
Concrete Removal	Cu. Yd.	1.4
Structure Excavation	Cu. Yd.	9.6
Concrete Structures	Cu. Yd.	1.2
Temporary Soil Retention System	Sq. Ft.	132
Deck Slab Repair (Partial)	Sq. Yd.	9
Structural Repair of Concrete (Depth Equal to or Less than 5 Inches)	Sq. Ft.	56
Remove and Replace Concrete Headwalls for Pipe Underdrains	Each	8
Approach Slab Repair (Partial Depth)	Sq. Yd.	18
Concrete Bridge Deck Scarification ¾"	Sq. Yd.	1600
Bridge Deck Thin Polymer Overlay ¾"	Sq. Yd.	1600
Preformed Joint Filler	Foot	32



**GENERAL PLAN & ELEVATION**  
**F.A.P. RTE. 331 (IL-13) OVER BANKSTON FORK**  
**SECTION - D9 BRIDGE OVERLAY 2026-11**  
**SALINE COUNTY**  
**STATION 774+42**  
**STRUCTURE NO. 083 - 0052 (E.B.)**  
**STRUCTURE NO. 083 - 0053 (W.B.)**

MODEL: 68K22-01  
FILE NAME: \\spspr-61\spshare\07000770-Oates\0770-0002\_IL13\_Bridg\_Repairs\_Saline\_Co\_WOR\CADD\_Design\4878887-Structure Repair Plans (CRD release 3).dgn  
3/13/2026 10:22:29 AM



USER NAME =	DESIGNED - VVR	REVISED -
	CHECKED - DHC	REVISED -
PLOT SCALE =	DRAWN - VVR	REVISED -
PLOT DATE = MARCH 13th, 2026	CHECKED - MAH	REVISED -

STATE OF ILLINOIS  
DEPARTMENT OF TRANSPORTATION

GENERAL PLAN & ELEVATION  
STRUCTURE NO. 083 - 0052 & 0053



SHEET 1 OF 8 SHEETS

F.A.P. RTE. 331	SECTION D9 Bridge Overlay 2026-11	COUNTY SALINE	TOTAL SHEETS 18	SHEET NO. 11
ILLINOIS FED. AID PROJECT			CONTRACT NO. 78B87	



For S.N. 083-0053  
 Deck Slab Repair (Partial) = 2 Sq. Yd.  
 Approach Slab Repair (Partial Depth) = 18 Sq. Yd.

**LEGEND**

-  Deck Slab Repair (Partial)
-  Approach Slab Repair (Partial Depth)

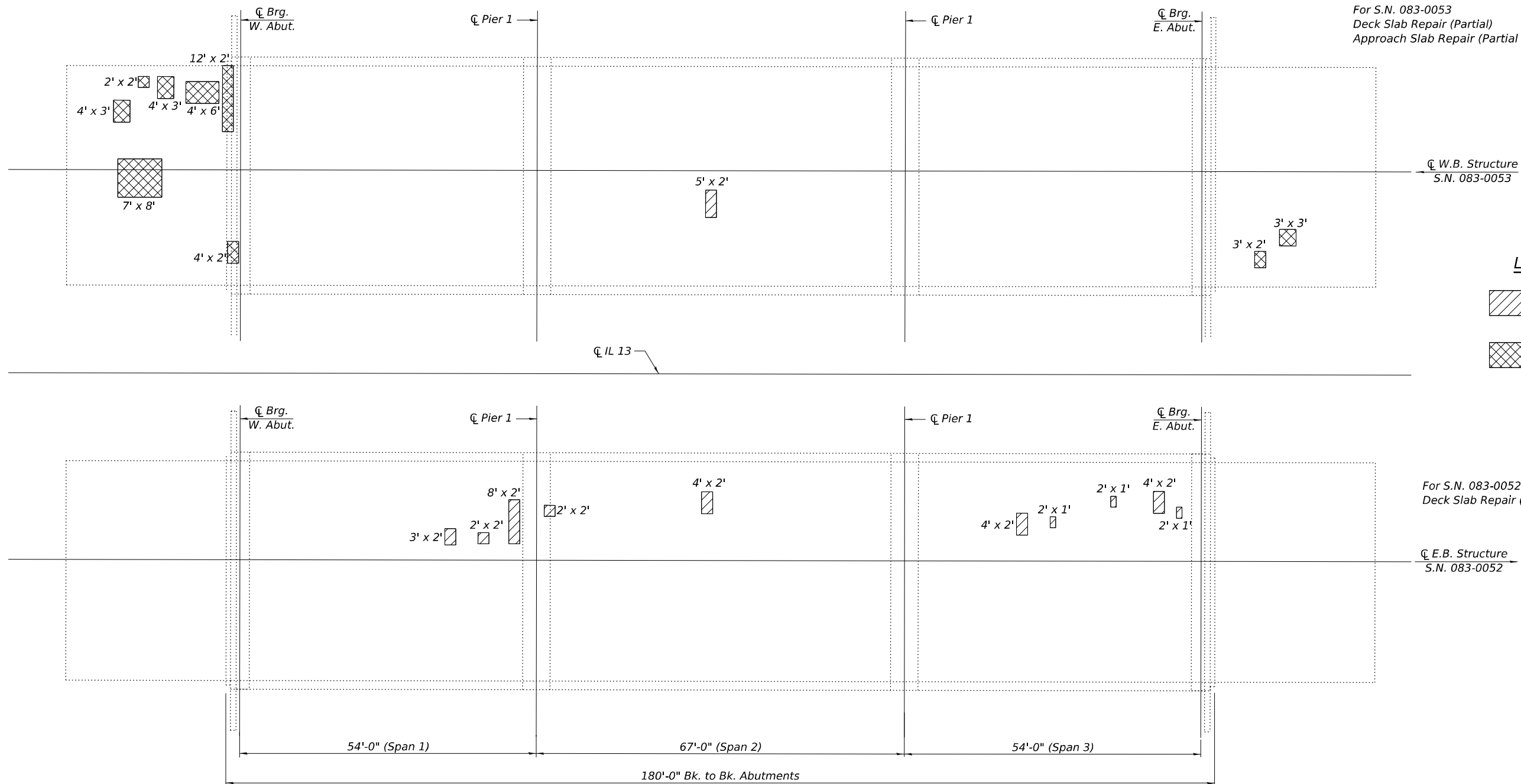
For S.N. 083-0052  
 Deck Slab Repair (Partial) = 7 Sq. Yd.

For E.B. Structure  
 S.N. 083-0052

**BILL OF MATERIAL**

ITEM	UNIT	QUANTITY
Deck Slab Repair (Partial)	Sq. Yd.	9
Approach Slab Repair (Partial Depth)	Sq. Yd.	18

Notes:  
 Actual location and size of repair areas to be determined by the Engineer in the field.



**PLAN**

MODEL: 68K2-01  
 FILE NAME: \\spsr-61\spshare\0700\0770-04es\0770-0002\_IL13\_Brig\_Repairs\_Saline\_Co\_WOR\CADD\_Design\878B87-Structure\_Repairs\_Plans (ORD release 3).dgn  
 3/13/2026 11:06:01 AM



USER NAME =	DESIGNED - VVR	REVISED -
	CHECKED - DHC	REVISED -
PLOT SCALE =	DRAWN - VVR	REVISED -
PLOT DATE = MARCH 13th, 2026	CHECKED - MAH	REVISED -


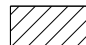


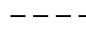
**STATE OF ILLINOIS  
 DEPARTMENT OF TRANSPORTATION**

**DECK SLAB & STRUCTURAL STEEL REPAIR DETAILS  
 STRUCTURE NO. 083 - 0052 & 0053**

SHEET 3 OF 8 SHEETS

F.A.P. RTE.	SECTION	COUNTY	TOTAL SHEETS	SHEET NO.
331	D9 Bridge Overlay 2026-11	SALINE	18	13
CONTRACT NO. 78B87				
ILLINOIS FED. AID PROJECT				

**LEGEND**

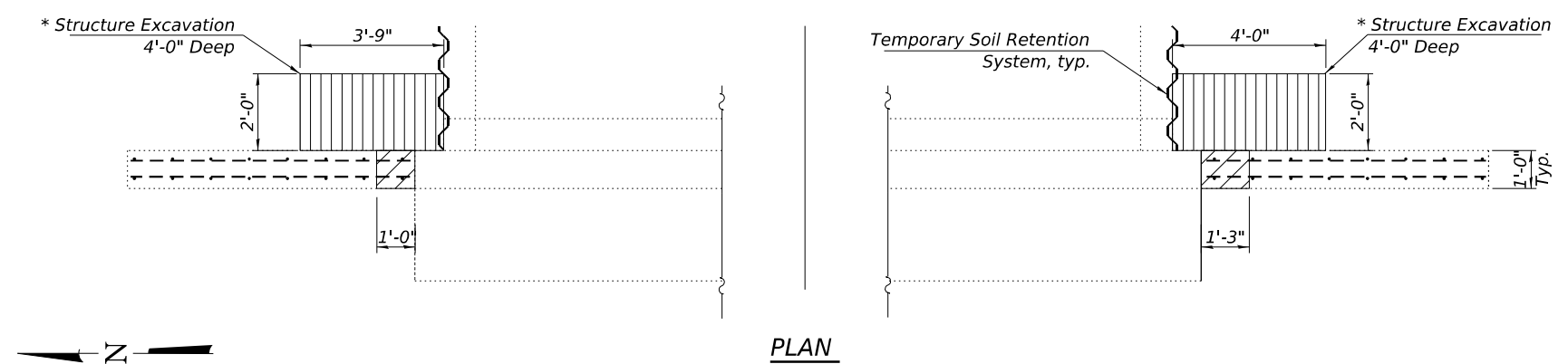
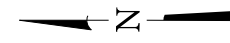
-  Structure Excavation
-  Concrete Removal
-  Concrete Replacement
-  Structural Repair of Concrete (≤ 5")
-  Exist. Reinforcement to remain

**Note:**

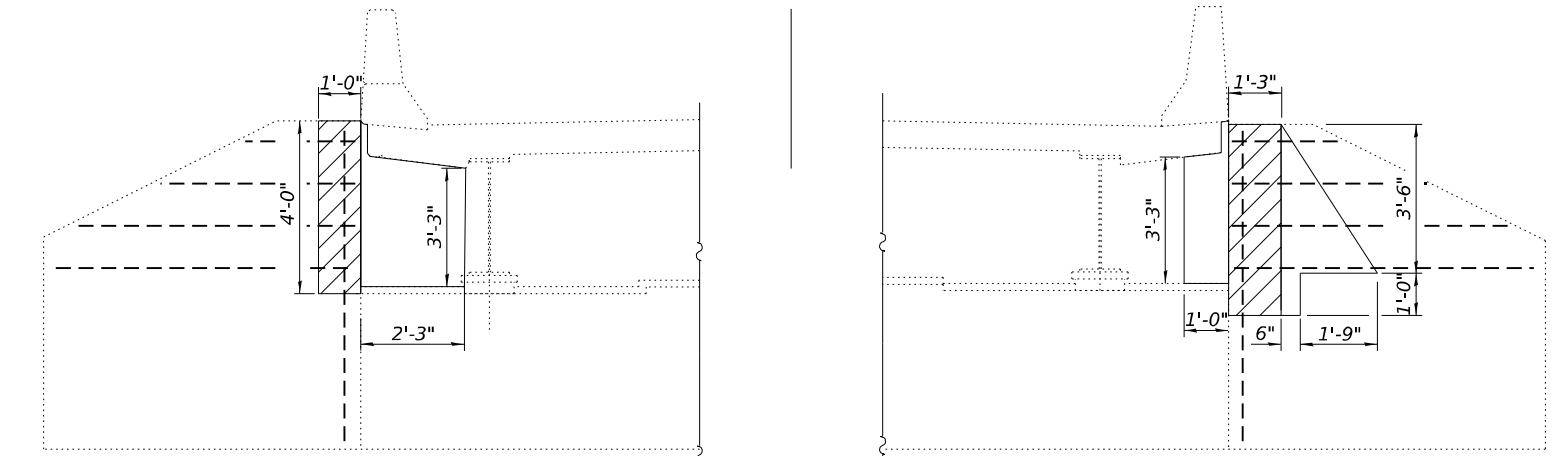
Trim the existing horizontal reinforcement in the wingwall to provide 2" of clear concrete cover.

Existing reinforcement that is exposed and to remain in place shall be cleaned, inspected, and, if in acceptable condition, to be reused.

\* Aggregate Base Course, Type B and excavated material from Structure Excavation to be used as fill material at each location.

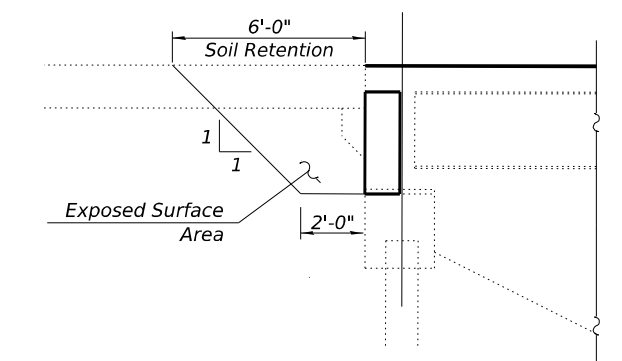


**PLAN**

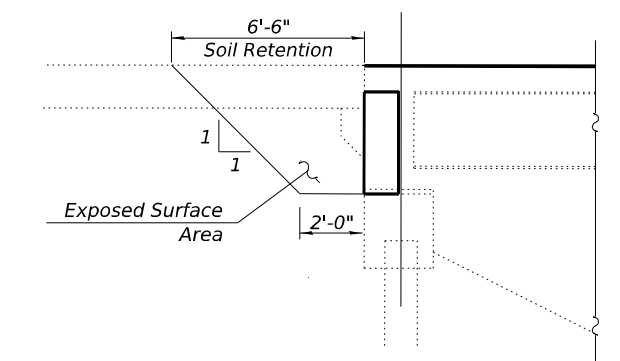


**ELEVATION  
(Looking East)**

**CONCRETE REMOVAL**

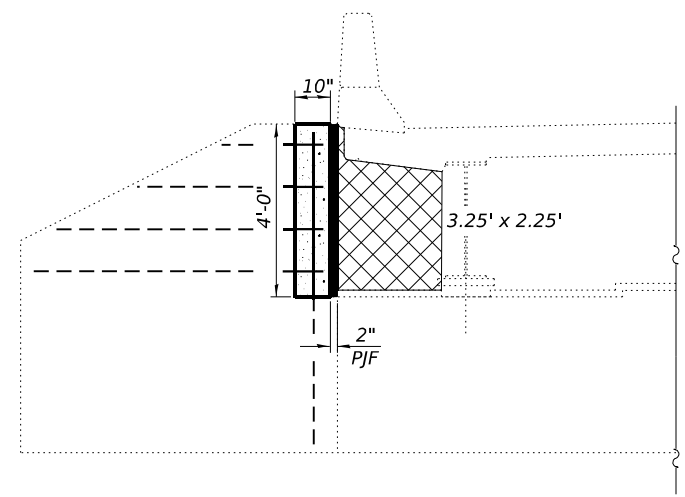


**SOIL RETENTION SYSTEM  
4'-0" DEPTH, TYPICAL**

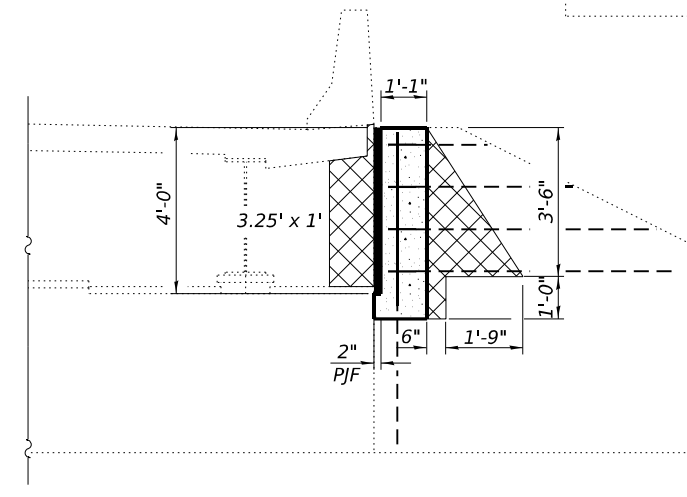


**SOIL RETENTION SYSTEM  
4'-6" DEPTH**

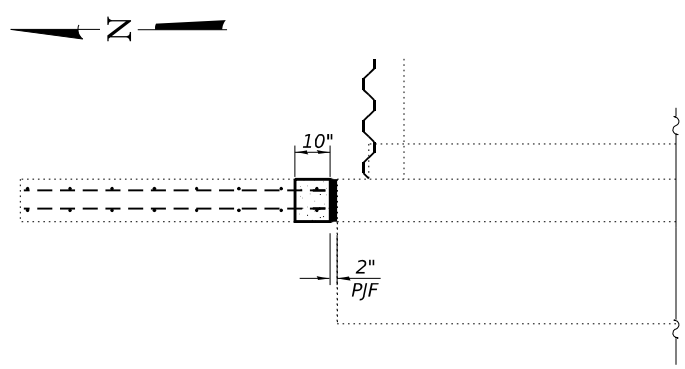
**TEMPORARY SOIL RETENTION SYSTEM**



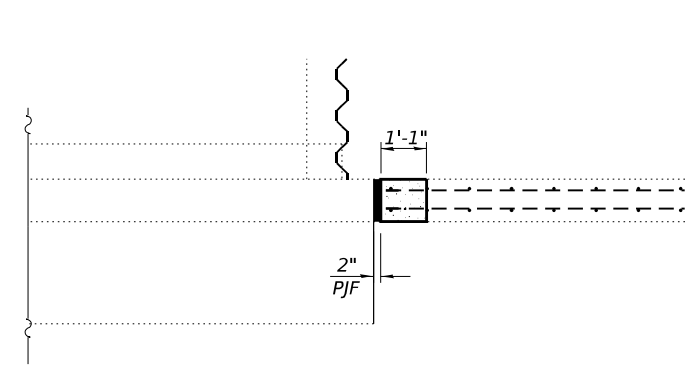
**ELEVATION  
(Looking East)**



**ELEVATION  
(Looking East)**



**PLAN  
REPAIR-B**



**PLAN  
REPAIR-B**

Note:  
Due to the underdrain behind the abutment a cantilevered sheet piling design does not appear feasible and additional members or other retention systems may be necessary. The Contractor shall submit a temporary soil retention system design including plan details and calculations for review and acceptance by the Engineer.

**BILL OF MATERIAL**

ITEM	UNIT	QUANTITY
Aggregate Base Course, Type B	Ton	1.5
Concrete Removal	Cu. Yd.	0.4
Structure Excavation	Cu. Yd.	2.5
Concrete Structures	Cu. Yd.	0.3
Temporary Soil Retention System	Sq. Ft.	36
Structural Repair of Concrete (Depth Equal to or Less than 5 Inches)	Sq. Ft.	15
Preformed Joint Filler	Foot	8

MODEL: 68K2-01  
FILE NAME: \\spsr-61\spshare\07000\0770-Oates\0770-0002\_IL13\_Brigg\_Repairs\_Saline\_Co\_WOR\CADD\_Design\878887-Structure\_Repairs\_Plans (CRD release 3).dgn  
3/13/2026 11:06:02 AM



USER NAME =	DESIGNED - VVR	REVISED -
	CHECKED - DHC	REVISED -
PLOT SCALE =	DRAWN - VVR	REVISED -
PLOT DATE = MARCH 13th, 2026	CHECKED - MAH	REVISED -

**STATE OF ILLINOIS  
DEPARTMENT OF TRANSPORTATION**

**EAST ABUTMENT REPAIR DETAILS  
STRUCTURE NO. 083 - 0052 (E.B.)**


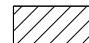
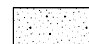

SHEET 4 OF 8 SHEETS

F.A.P. RTE.	SECTION	COUNTY	TOTAL SHEETS	SHEET NO.
331	D9 Bridge Overlay 2026-11	SALINE	18	14
CONTRACT NO. 78B87				
ILLINOIS FED. AID PROJECT				





**LEGEND**

-  Structure Excavation
-  Concrete Removal
-  Concrete Replacement
-  Structural Repair of Concrete (≤ 5")

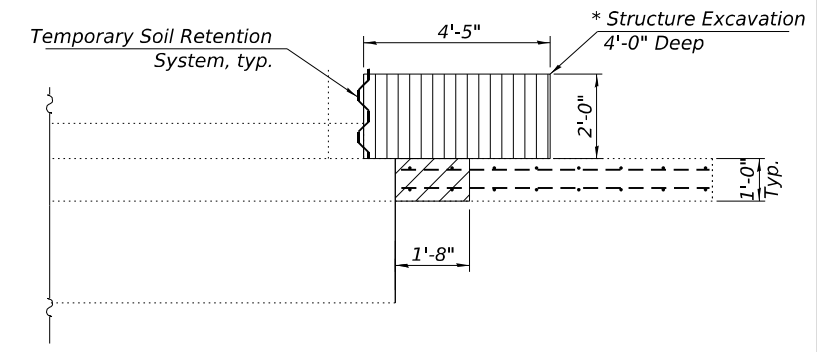
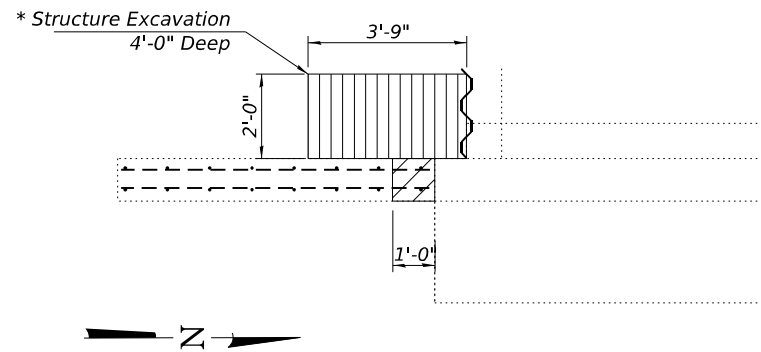
--- Exist. Reinforcement to remain

**Note:**

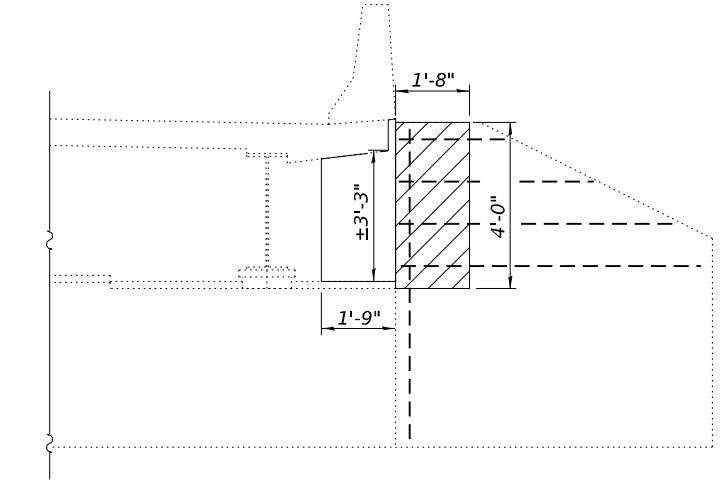
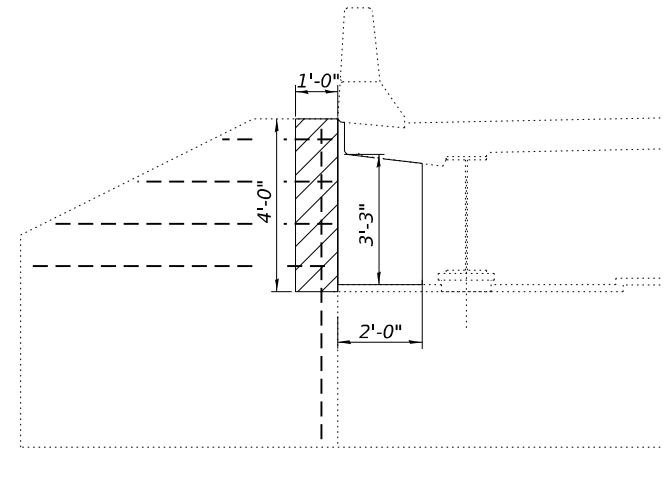
Trim the existing horizontal reinforcement in the wingwall to provide 2" of clear concrete cover.

Existing reinforcement that is exposed and to remain in place shall be cleaned, inspected, and, if in acceptable condition, to be reused.

\* Aggregate Base Course, Type B and excavated material from Structure Excavation to be used as fill material at each location.

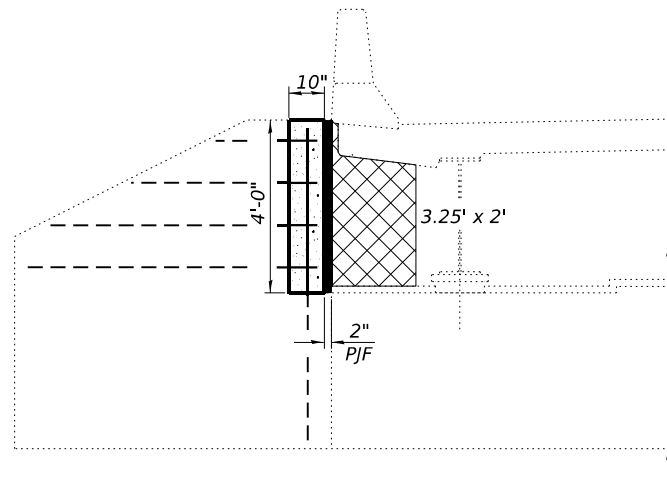


**PLAN**

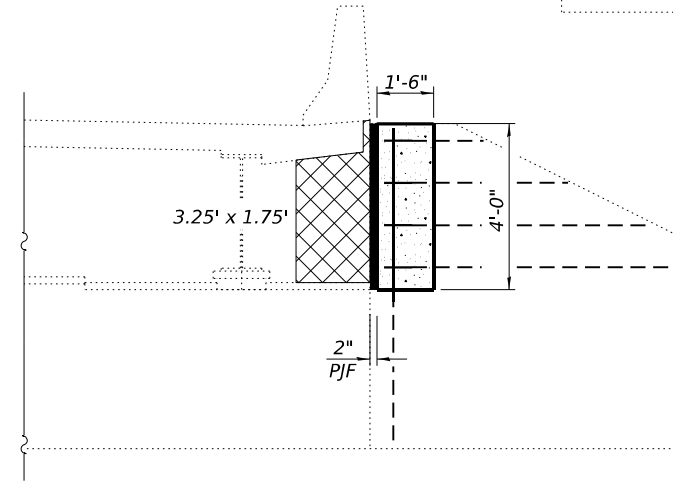


**ELEVATION**  
(Looking West)

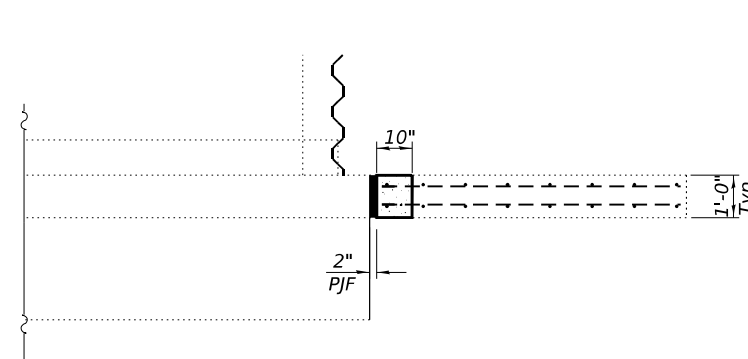
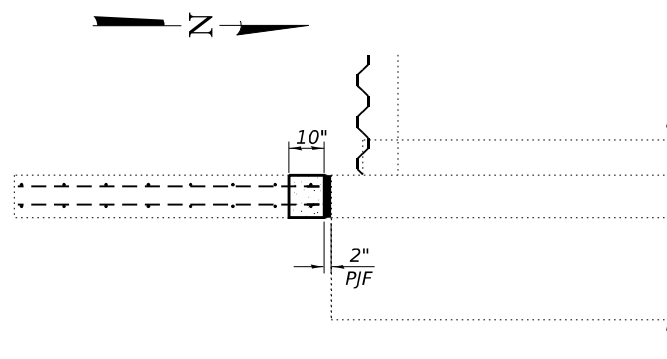
**CONCRETE REMOVAL**



**ELEVATION**  
(Looking West)



**PLAN**  
**REPAIR-E**



Note:  
See sheet 4 of 8 for Temporary Soil Retention System details.

**BILL OF MATERIAL**

ITEM	UNIT	QUANTITY
Aggregate Base Course, Type B	Ton	1.5
Concrete Removal	Cu. Yd.	0.4
Structure Excavation	Cu. Yd.	2.5
Concrete Structures	Cu. Yd.	0.3
Temporary Soil Retention System	Sq. Ft.	32
Structural Repair of Concrete (Depth Equal to or Less than 5 Inches)	Sq. Ft.	13
Preformed Joint Filler	Foot	8

MODEL: 6BK2-01  
FILE NAME: \\kspr-61\spshare\0700\0770-0\ates\0770-0002\_IL13\_Brigg\_Repairs\_Saline\_Co\_WOR\CADD\_Design\4978B87-Structure Repair Plans (CRD release 3).dgn  
3/13/2026 11:06:04 AM

**VEENSTRA & KIMM INC.**  
A Kleinfelder Company  
Springfield, IL Phone: (217)544-8033  
IL Design Firm No. 184-001939

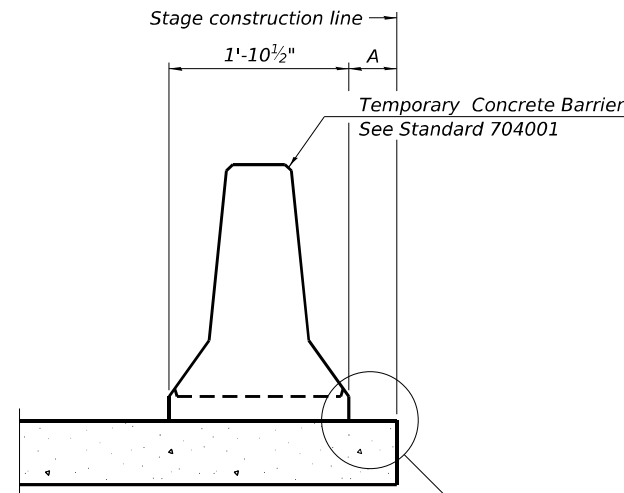
USER NAME =	DESIGNED - VVR	REVISED -
	CHECKED - DHC	REVISED -
PLOT SCALE =	DRAWN - VVR	REVISED -
PLOT DATE = MARCH 13th, 2026	CHECKED - MAH	REVISED -

**STATE OF ILLINOIS**  
**DEPARTMENT OF TRANSPORTATION**

**WEST ABUTMENT REPAIR DETAILS**  
**STRUCTURE NO. 083 - 0053 (W.B.)**

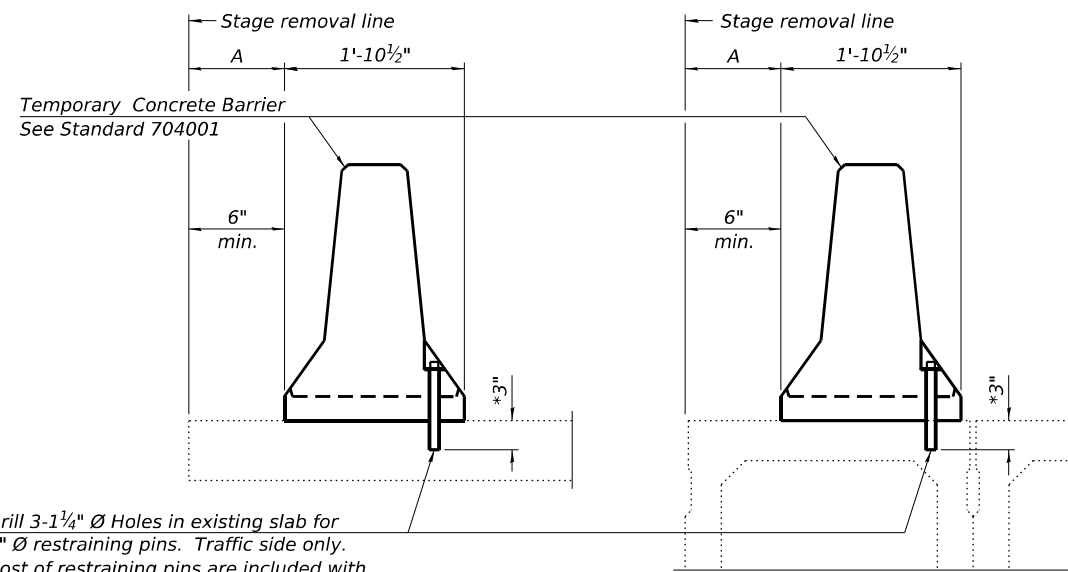
SHEET 7 OF 8 SHEETS

F.A.P. RTE.	SECTION	COUNTY	TOTAL SHEETS	SHEET NO.
331	D9 Bridge Overlay 2026-11	SALINE	18	17
CONTRACT NO. 78B87				
ILLINOIS FED. AID PROJECT				



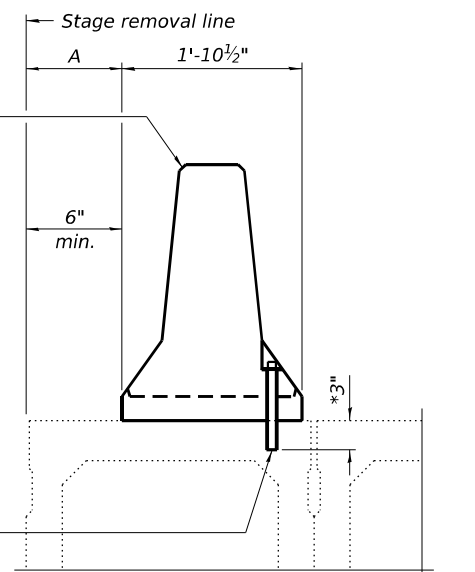
When "A" is 3'-1" or less, the temporary concrete barrier shall be restrained to the new slab according to Detail I, II or III. No restraint is required when "A" is greater than 3'-1".

NEW SLAB OR NEW DECK BEAM



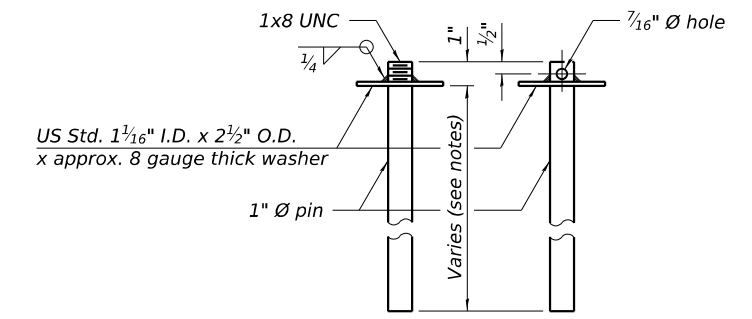
Drill 3-1/4" Ø Holes in existing slab for 1" Ø restraining pins. Traffic side only. Cost of restraining pins are included with Temporary Concrete Barrier. No restraint is required when "A" is greater than 3'-1".

EXISTING SLAB



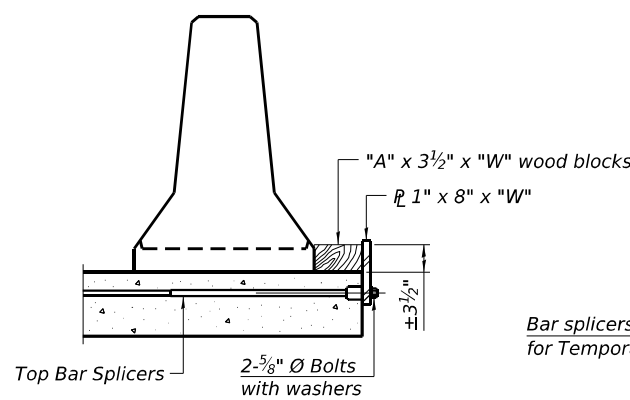
\* When hot-mix asphalt wearing surface is present, embedment shall be 3" plus the wearing surface depth.

EXISTING DECK BEAM

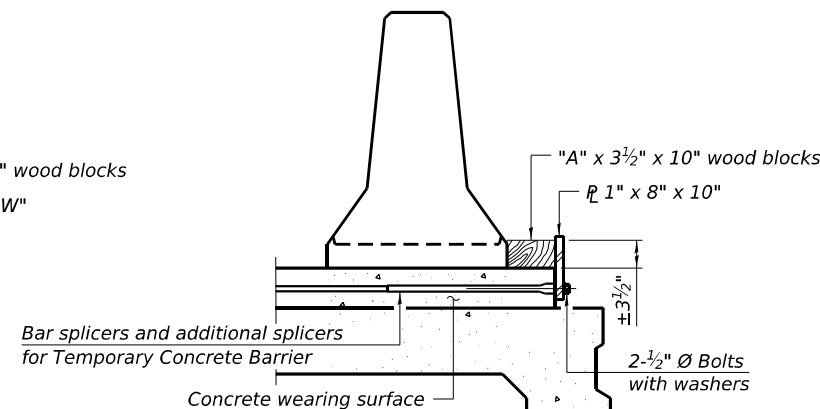


RESTRAINING PIN

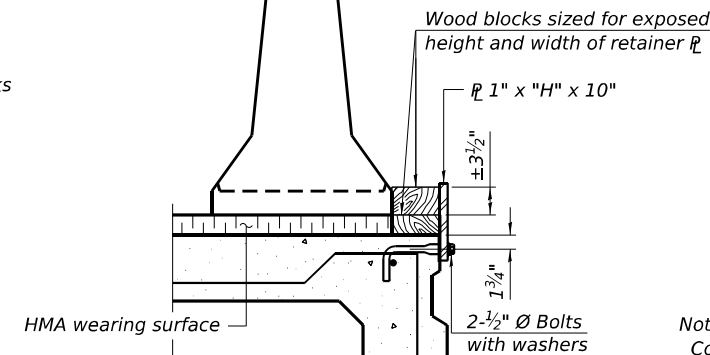
SECTIONS THRU SLAB OR DECK BEAM



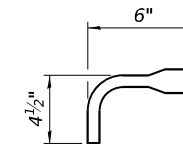
DETAIL I



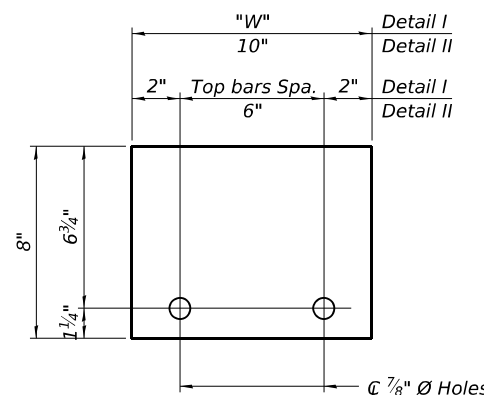
DETAIL II



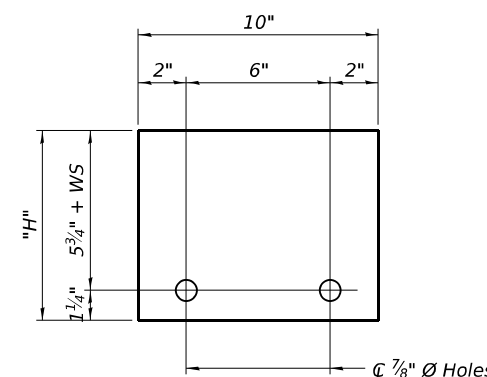
DETAIL III



BAR SPLICER FOR #4 BAR - DETAIL III



STEEL RETAINER 1" x 8" x "W" (Detail I and II)



STEEL RETAINER 1" x "H" x 10" (Detail III)

Notes:

- Cost of retainer assembly is included with Temporary Concrete Barrier.
- A retainer assembly shall be located at the approximate center of each temporary concrete barrier.
- The retainer plate shall not be removed until the concrete on the adjacent stage is ready to be poured. For Detail III applications the retainer plate shall not be removed until just prior to placing the adjacent beam.
- When the 'A' dimension is less than 1 1/2", the wood block shall be omitted and the barrier shall be placed in direct contact with the steel retainer plate.
- For deck beam applications the minimum required 'A' distance is 6" to accommodate the shear key clamping device.

Detail I - Installation for a new bridge deck or bridge slab.

Detail II - Installation for a new deck beam with an initial concrete wearing surface. Additional bar splicers shall be provided at 6'-0" centers and paired with the bar splicers of the concrete wearing surface reinforcement to accommodate the installation of the retainer assemblies. The cost of the additional bar splicers is included with the concrete wearing surface.

Detail III - Installation for a new deck beam with no initial wearing surface or with an initial hot-mix asphalt (HMA) wearing surface present. The deck beam directly beneath the temporary concrete barrier shall be fabricated with bar splicer inserts in the side of the beam, as detailed, to accommodate the installation of the retainer assemblies. A pair of bar splicers, 6" apart, shall be placed at 6'-0" centers along the length of the beam. The cost of the bar splicers is included with the deck beam.

RAILING CRITERIA

NCHRP 350 Test Level	3
Railing Weight (plf)	440

R-27 5-15-2023

MODEL: 68K22-01  
FILE NAME: \\vspr-61\spshare\07000770-0\ates\0770-0\ates\0770-0\CADD\Design\4978887-Structure Repair Plans (CRD release 3).dgn



USER NAME =	DESIGNED - VVR	REVISED -
	CHECKED - DHC	REVISED -
PLOT SCALE =	DRAWN - VVR	REVISED -
PLOT DATE = JANUARY 6th, 2026	CHECKED - MAH	REVISED -

STATE OF ILLINOIS  
DEPARTMENT OF TRANSPORTATION

TEMPORARY CONCRETE BARRIER  
STRUCTURE NO. 083 - 0052 & 0053

SHEET 8 OF 8 SHEETS

F.A.P. RTE.	SECTION	COUNTY	TOTAL SHEETS	SHEET NO.
331	D9 Bridge Overlay 2026-11	SALINE	18	18
CONTRACT NO. 78B87				
ILLINOIS FED. AID PROJECT				