

ROAD CLASSIFICATION: MAJOR COLLECTOR  
 DESIGN SPEED: 50 M.P.H.

STATE OF ILLINOIS

04-24-2026 LETTING ITEM 207

ROUTE	SECTION	COUNTY	SHEET NO.
FAS 868	25-00201-00-RS	FRANKLIN	1 OF 10
			CONTRACT 99767

ADT:  
 (2024) = 2100  
 (2044) = 2830  
 PC = 2490  
 SU = 198  
 MU = 142  
 DHV<sub>20</sub> = 283

DEPARTMENT OF TRANSPORTATION

DIVISION OF HIGHWAYS

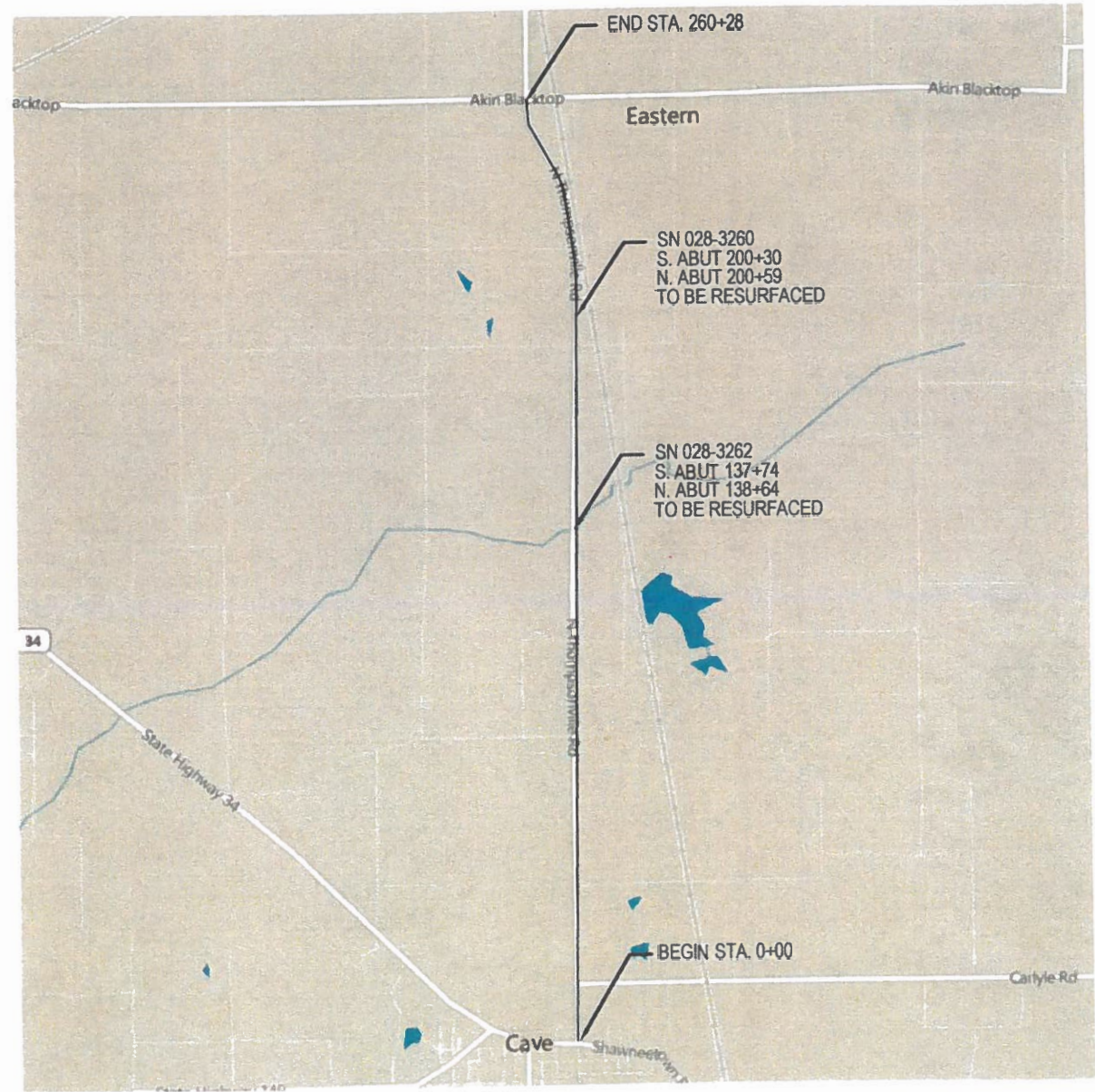
PLANS FOR PROPOSED ROADWAY IMPROVEMENTS

FAS 868 North Thompsonville Road  
 Franklin County, Illinois  
 Section 25-00201-00-RS  
 Job C-99-042-26

SHEET NO.	TITLE
1	COVER SHEET AND SUMMARY OF QUANTITIES
2	SUMMARY OF QUANTITIES
3	MISCELLANEOUS DETAILS AND TYPICAL SECTIONS
4	MISCELLANEOUS DETAILS
5-10	PLAN

STANDARDS

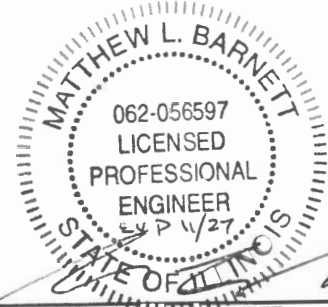
- 701006-05
- 701301-04
- 701306-04
- 701311-03
- 701901-11
- 780001-05
- BLR 24-2



LOCATION MAP  
 NET LENGTH = 4.93 miles (26,028 feet)



STATE OF ILLINOIS	
DEPARTMENT OF TRANSPORTATION	
APPROVED	11/25/25
FRANKLIN COUNTY HIGHWAY ENGINEER	
PASSED	11/13/26
DISTRICT 9 ENGINEER OF LOCAL ROADS & STREETS	
RELEASING FOR BID	
BASED ON LIMITED REVIEW	11/13/26
DEPUTY DIRECTOR OF HIGHWAYS, REGION 5 ENGINEER	



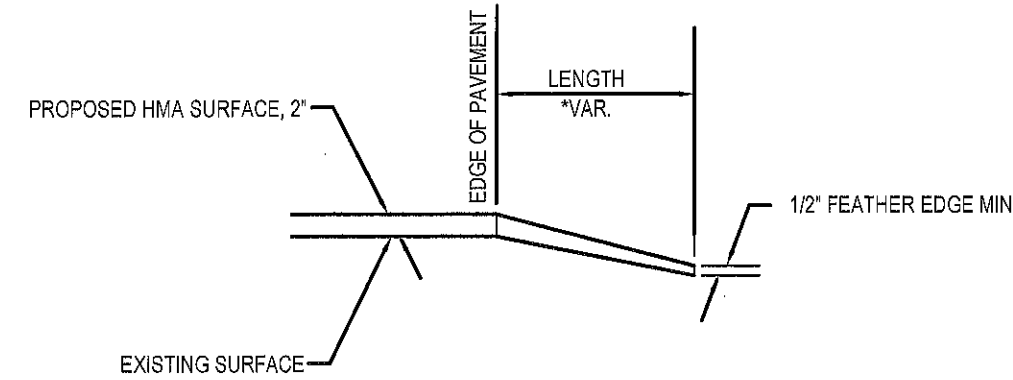
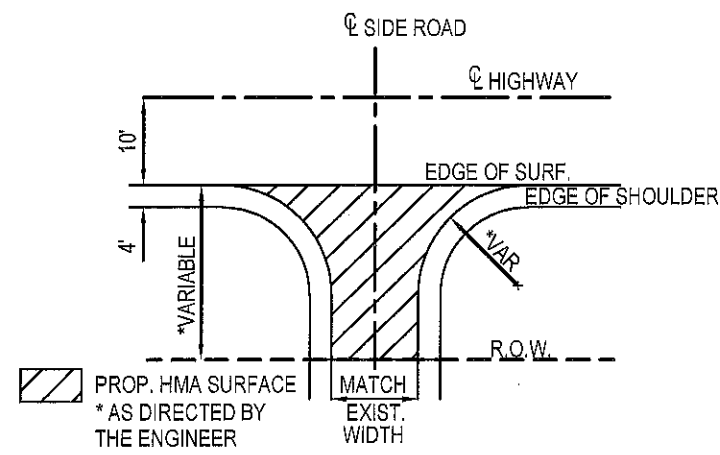
MATTHEW L. BARNETT  
 ILLINOIS REGISTERED PROFESSIONAL ENGINEER  
 #062-056597  
 LIC. EXPIRES 11/30/2027

CONTRACT 99767

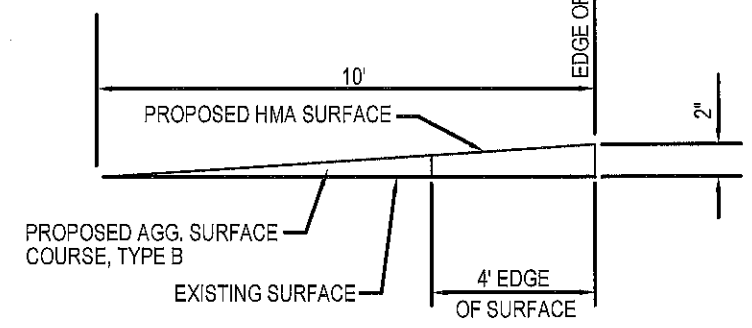
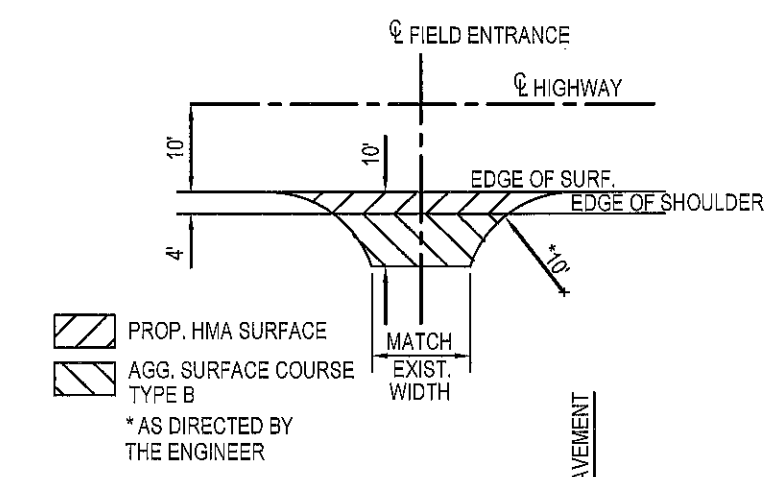
### SUMMARY OF QUANTITIES

CODE NO.	PAY ITEM	UNIT	TOTAL
40200800	AGGREGATE SURFACE COURSE, TYPE B	TON	66
40600290	BITUMINOUS MATERIALS (TACK COAT)	POUND	29,733
40600370	LONGITUDINAL JOINT SEALANT	FOOT	26,028
40600982	HOT-MIX ASPHALT SURFACE REMOVAL-BUTT JOINT	SQ YD	295
40604052	HOT-MIX ASPHALT SURFACE COURSE, IL-9.5, MIX "C", N70	TON	7,811
44000157	HOT-MIX ASPHALT SURFACE REMOVAL, 2"	SQ YD	63,477
48100100	AGGREGATE SHOULDERS, TYPE A	TON	2,517
60255500	MANHOLES TO BE ADJUSTED	EACH	1
67100100	MOBILIZATION	LSUM	1
70100460	TRAFFIC CONTROL AND PROTECTION STANDARD 701306	LSUM	1
70300100	SHORT-TERM PAVEMENT MARKING	FOOT	2,603
70300150	SHORT-TERM PAVEMENT MARKING REMOVAL	SQ FT	868
* 78001110	PAINT PAVEMENT MARKING - LINE 4"	FOOT	71,299

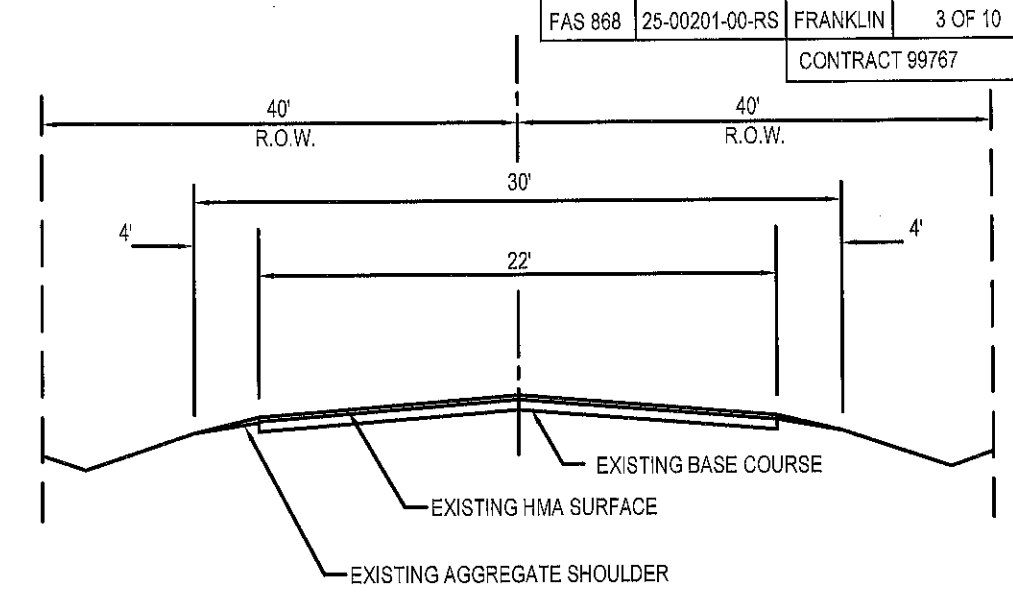
\* SPECIALTY ITEM



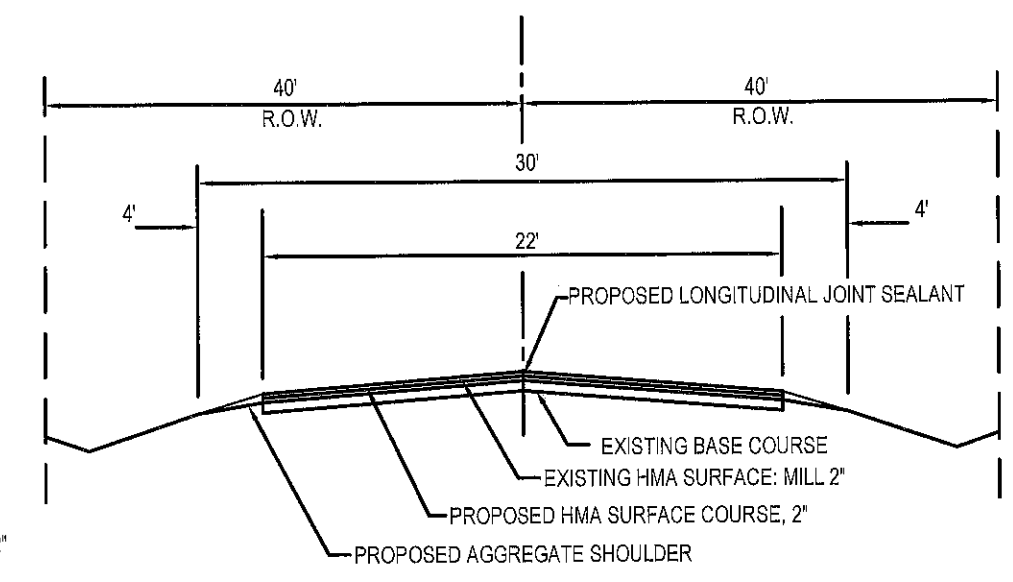
**SIDEROAD DETAILS**



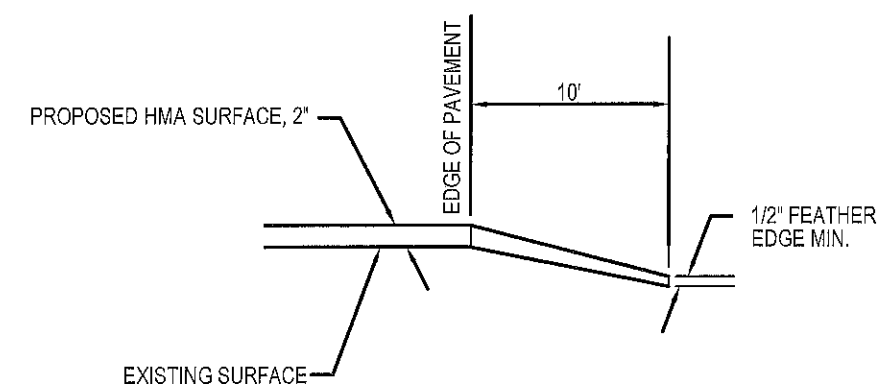
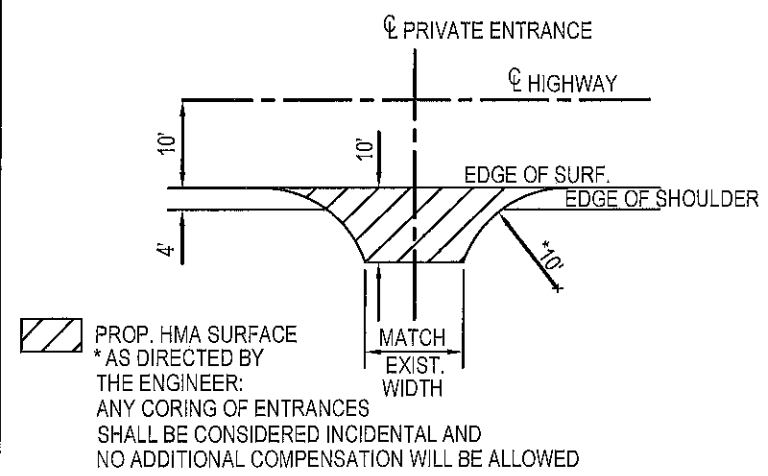
**FIELD ENTRANCE DETAILS**



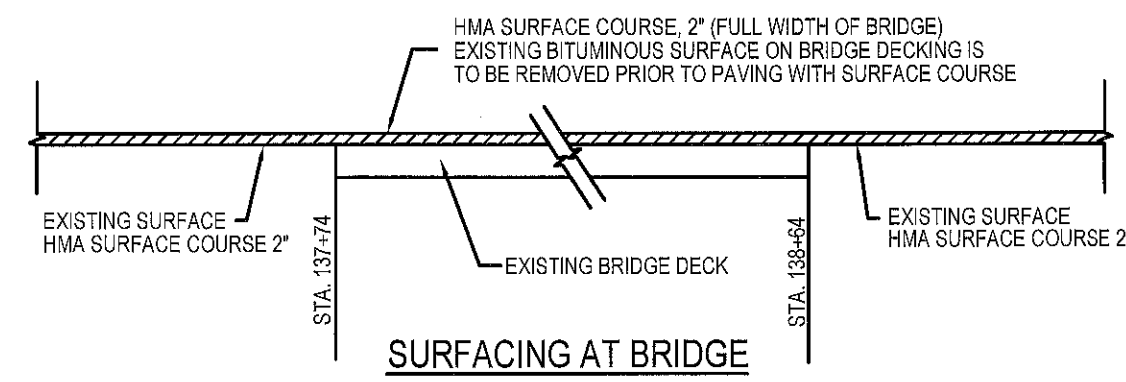
**TYPICAL EXISTING SECTION**



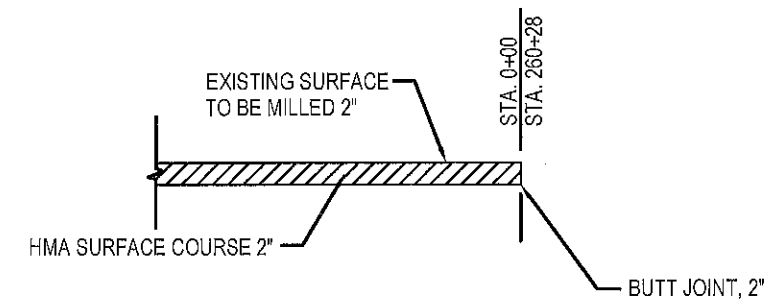
**TYPICAL PROPOSED SECTION**



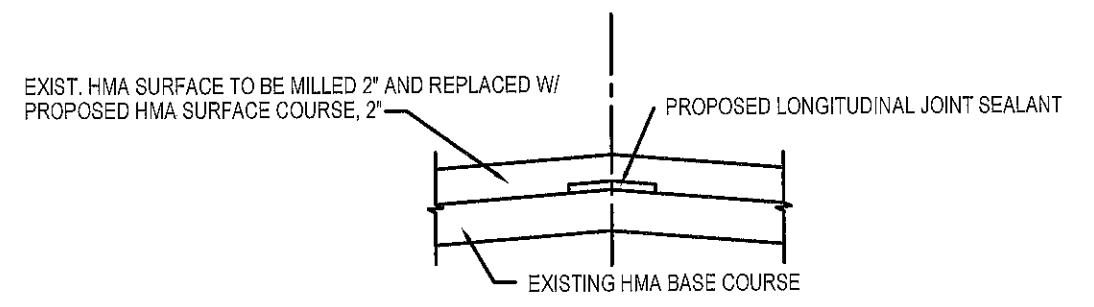
**PRIVATE AND COMMERCIAL ENTRANCE DETAILS**



**SURFACING AT BRIDGE**



**MILLING DETAIL**



**LONGITUDINAL JOINT SEALANT DETAIL**

FIELD ENTRANCE QUANTITIES		
ENTRANCES	AGGREGATE SURFACE COURSE TYPE B, TON	HOT MIX ASPHALT SURFACE COURSE, IL-9.5, MIX "C", N70, TON
ONE (1) ENTRANCE	2.0	1.3
TOTAL = 33 ENTRANCES	66	42.9

MAILBOX TURNOUT QUANTITIES		
TURNOUT	BITUMINOUS MATERIALS (TACK COAT) POUND	HOT MIX ASPHALT SURFACE COURSE, IL-9.5, MIX "C", N70, TON
ONE (1) TURNOUT	6	1.5
TOTAL = 20 TURNOUTS	120	30

PRIVATE ENTRANCE QUANTITIES		
ENTRANCES	BITUMINOUS MATERIALS (TACK COAT) POUND	HOT MIX ASPHALT SURFACE COURSE, IL-9.5, MIX "C", N70, TON
ONE (1) ENTRANCE	15	3.6
TOTAL = 23 ENTRANCES	345	82.8

COMMERCIAL ENTRANCE QUANTITIES		
ENTRANCES	BITUMINOUS MATERIALS (TACK COAT) POUND	HOT MIX ASPHALT SURFACE COURSE, IL-9.5, MIX "C", N70, TON
ONE (1) ENTRANCE	29	7.2
TOTAL = 3 ENTRANCES	87	21.6

SIDEROAD QUANTITIES		
ENTRANCES	BITUMINOUS MATERIALS (TACK COAT) POUND	HOT MIX ASPHALT SURFACE COURSE, IL-9.5, MIX "C", N70, TON
2+76 LT	50	12.5
4+56 LT	50	12.5
15+99 RT	50	12.5
42+90 RT	50	12.5
69+86 LT	50	12.5
83+30 LT	50	12.5
96+60 RT	50	12.5
109+70 LT	50	12.5
189+17 RT	50	12.5
189+17 LT	50	12.5
215+84 LT	50	12.5
TOTAL = 11 SIDE ROADS	550	137.5

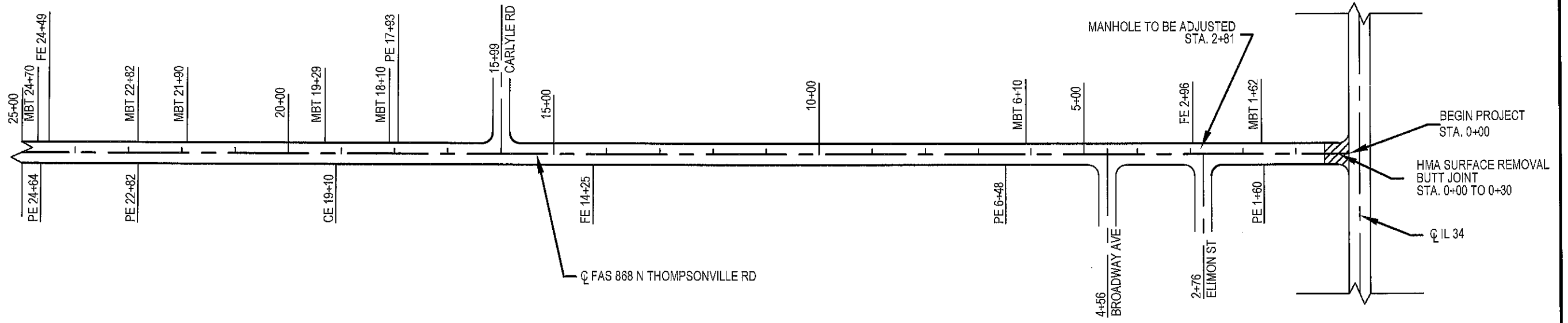
SCHEDULE OF PAVEMENT MARKING LINE, 4"							
NORTHBOUND LANE				SOUTHBOUND LANE		EDGE OF PAVEMENT	
STATION	NO PASSING (YELLOW SOLID)	PASSING (YELLOW DASHED)	STATION	NO PASSING (YELLOW SOLID)	PASSING (YELLOW DASHED)	STATION	EDGE LINE (WHITE)
0+00 to 12+47		312	0+00 to 12+47	1247		0+00 to 260+28	52056
12+47 to 16+46		100				Subtract Side Roads	-620
16+46 to 23+72	726		16+46 to 23+72		182		
23+72 to 25+34		41					
25+34 to 33+28		199	25+34 to 33+28	794			
33+28 to 36+80		88					
36+80 to 45+77	897		36+80 to 45+77		224		
45+77 to 46+72		24					
46+72 to 56+02		233	46+72 to 56+02	930			
56+02 to 67+37		284					
67+37 to 72+81	544		67+37 to 72+81	136			
72+81 to 76+63		96					
76+83 to 83+67		176	76+83 to 83+67	704			
83+67 to 90+63		174					
90+63 to 95+67	504		90+63 to 95+67		126		
95+67 to 100+35		117					
100+35 to 105+52		129	100+35 to 105+52	517			
105+52 to 159+35		1346					
159+35 to 169+46		253	159+35 to 169+46	1011			
169+46 to 177+10		191					
177+10 to 182+45	535		177+10 to 182+45		134		
182+45 to 183+35	90		182+45 to 183+35	90			
183+35 to 191+69		209	183+35 to 191+69	834			
191+69 to 204+40		318					
204+40 to 210+00	560		204+40 to 210+00		140		
210+00 to 225+00		375					
225+00 to 228+42	342		225+00 to 228+42		86		
228+42 to 233+44	502		228+42 to 233+44	502			
233+44 to 236+64		80	233+44 to 236+64	320			
236+64 to 245+00		209					
245+00 to 251+30	630		245+00 to 251+30		158		
251+30 to 258+40	710		251+30 to 258+40	710			
258+40 to 260+28		24					
	6040	4978		7795	1050		
TOTAL YELLOW			19863			TOTAL WHITE	51436

MILLING SCHEDULE		
STATION	TYPE	COLD MILLING (SQ YD)
0+00 to 0+30	BUTT JT	218
259+98 to 260+28	BUTT JT	77
TOTAL BUTT JT (SQ YD)		295
0+30 to 259+28	HMA SURF REM 2"	63477

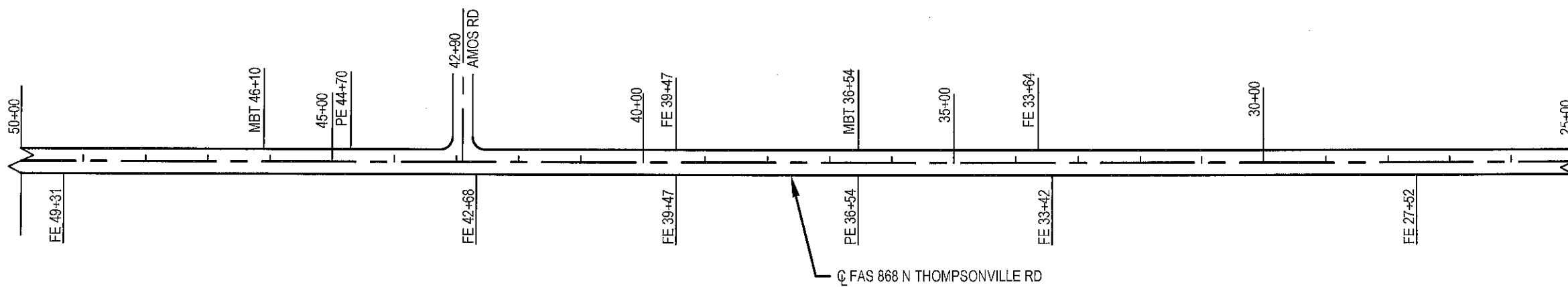
MISCELLANEOUS DETAILS

SCALE 1" = 200'

ROUTE	SECTION	COUNTY	SHEET NO.
FAS 888	21-00201-00-RS	FRANKLIN	5 OF 10
CONTRACT 99767			



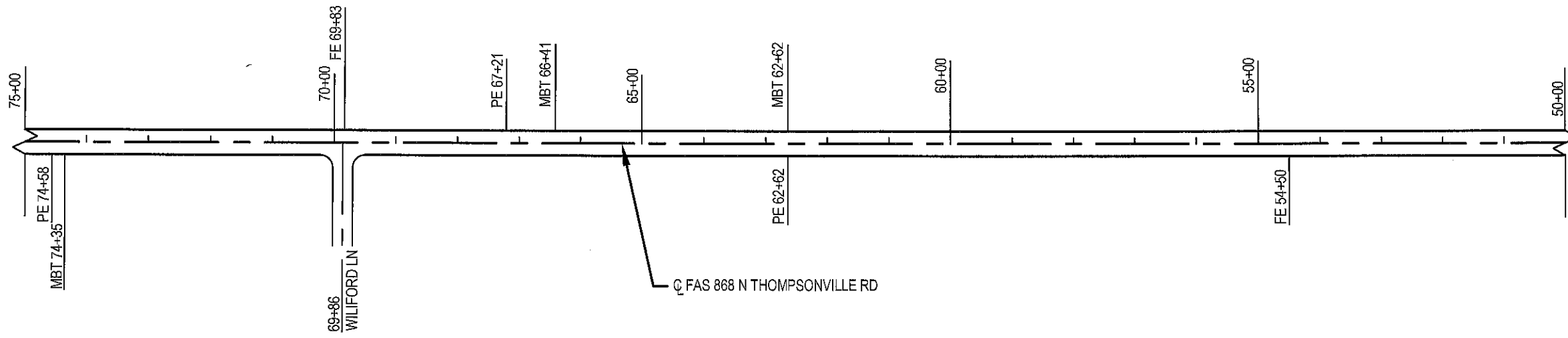
SCALE 1" = 200'



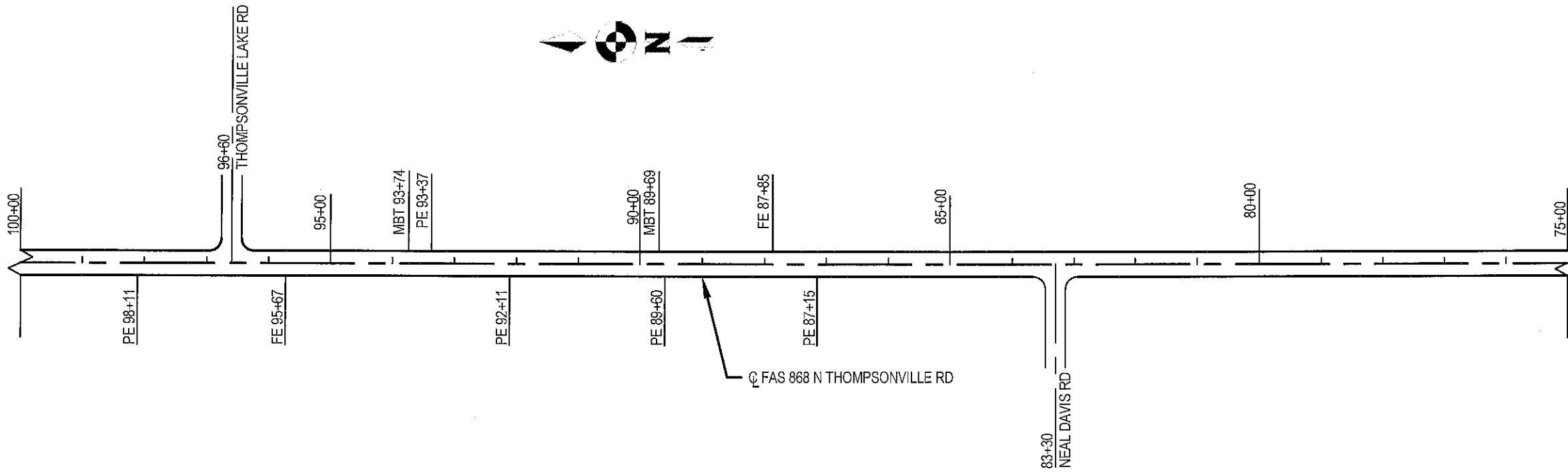
PLAN  
STATION 0+00 TO 50+00

SCALE 1" = 200'

ROUTE	SECTION	COUNTY	SHEET NO.
FAS 888	25-00201-00-RS	FRANKLIN	6 OF 10
CONTRACT 99767			



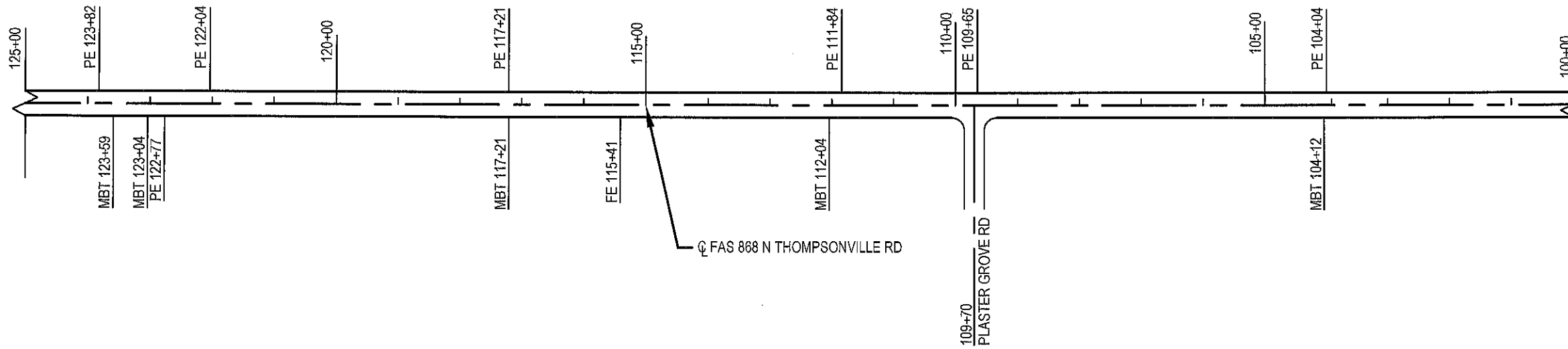
SCALE 1" = 200'



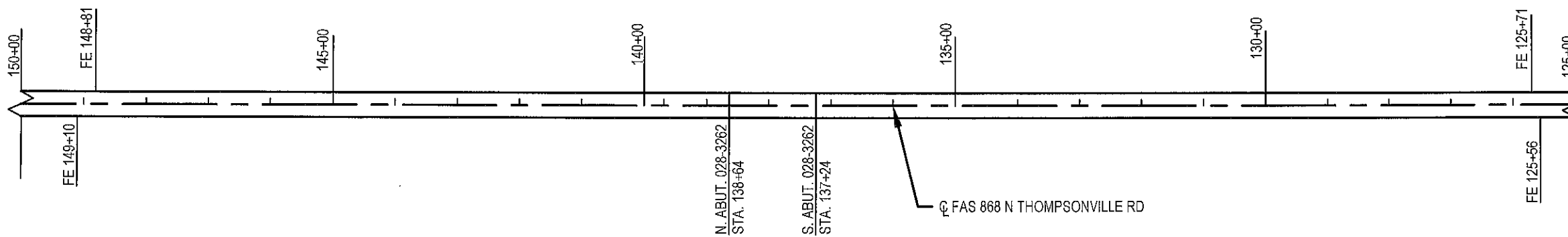
PLAN  
STATION 50+00 TO 100+00

SCALE 1" = 200'

ROUTE	SECTION	COUNTY	SHEET NO.
FAS 868	25-00201-00-RS	FRANKLIN	7 OF 10
CONTRACT 99767			



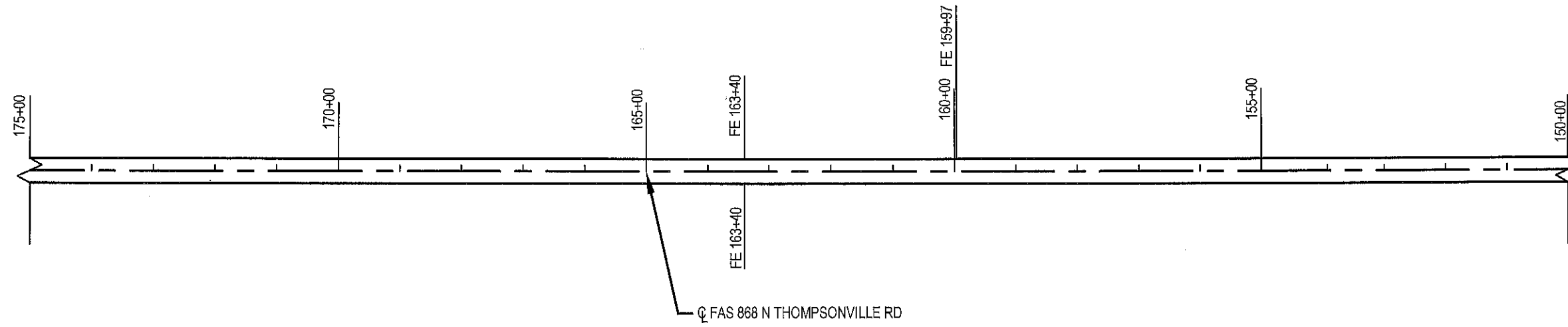
SCALE 1" = 200'



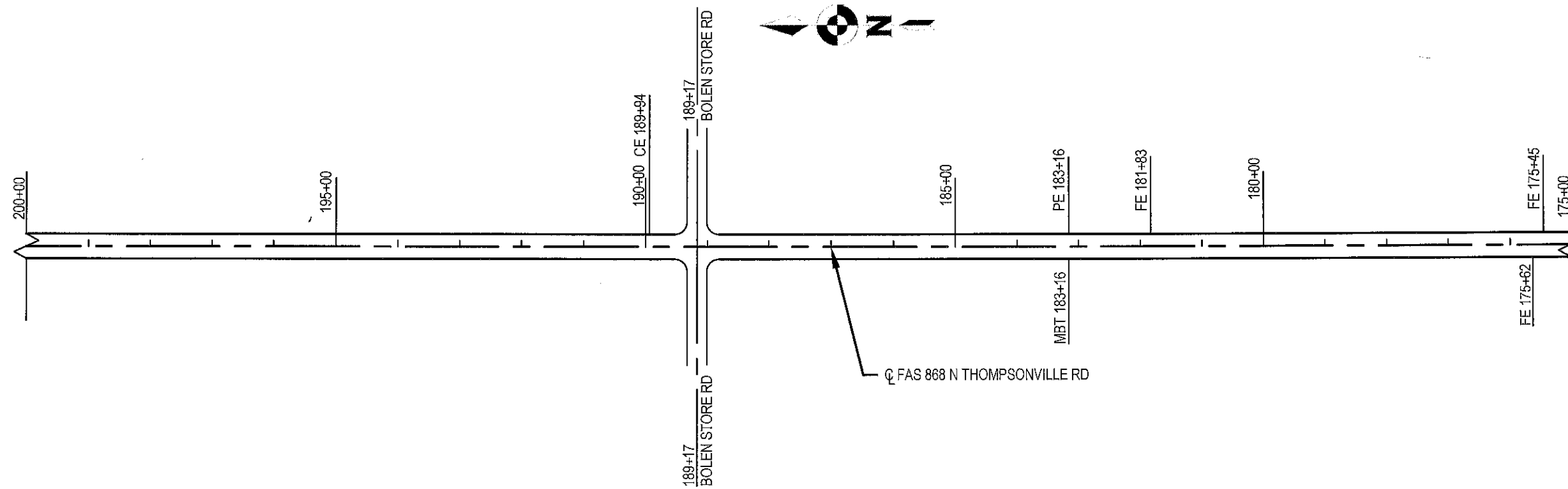
PLAN  
STATION 100+00 TO 150+00

SCALE 1" = 200'

ROUTE	SECTION	COUNTY	SHEET NO.
FAS 868	25-00201-00-RS	FRANKLIN	8 OF 10
CONTRACT 99767			



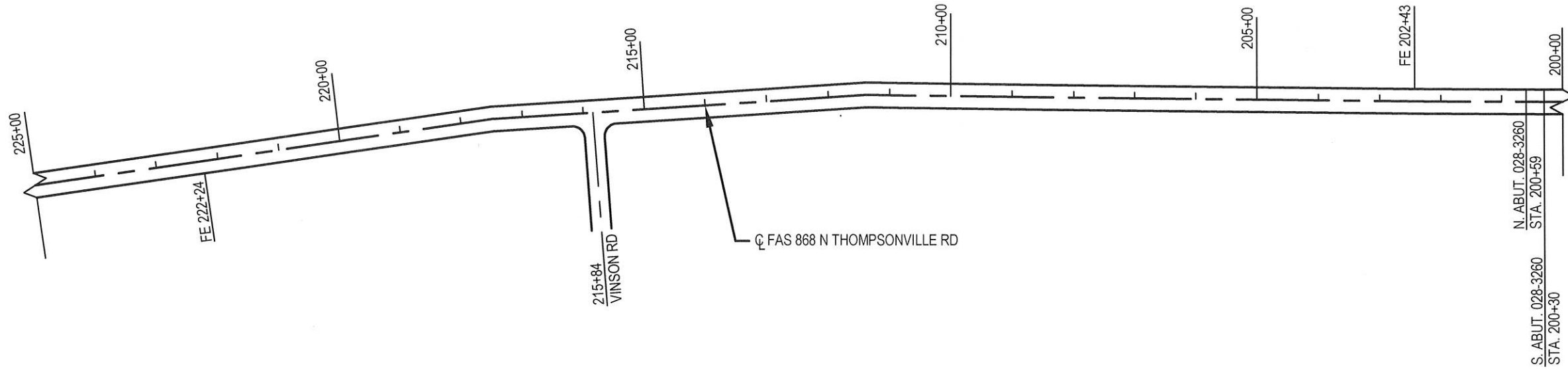
SCALE 1" = 200'



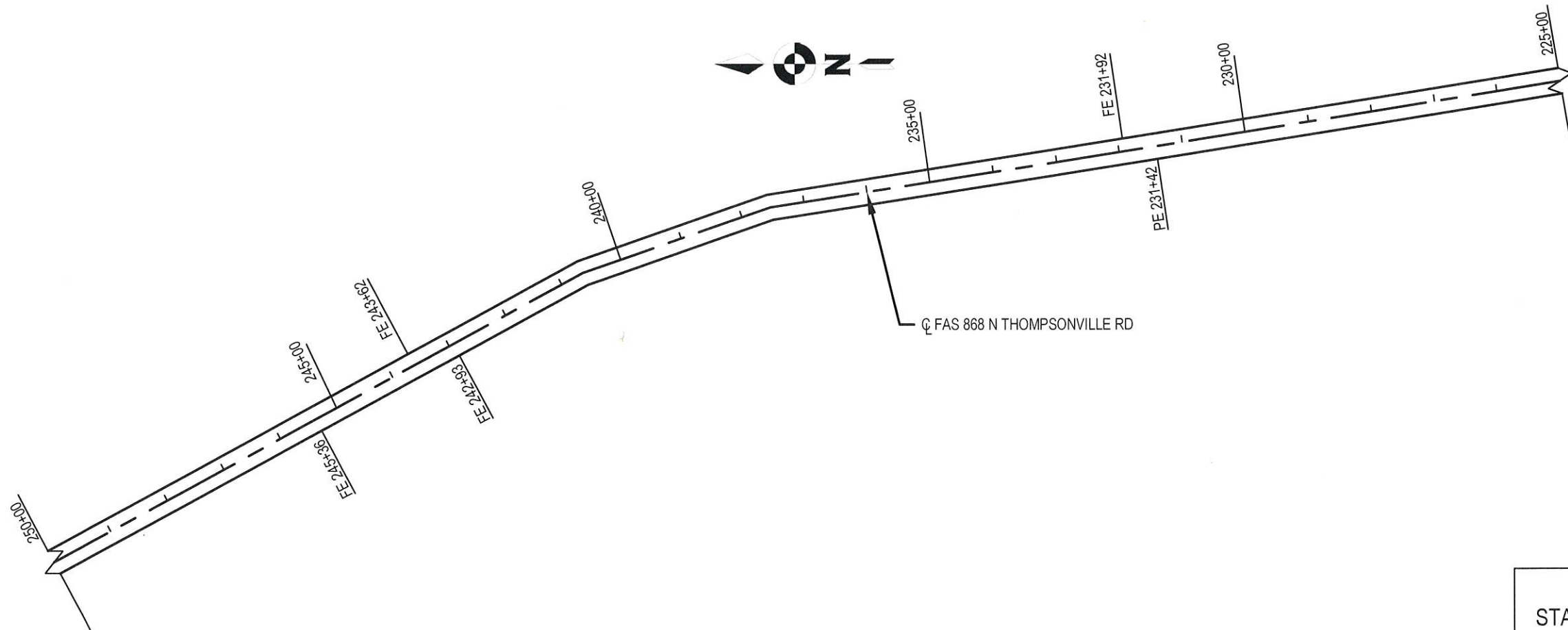
PLAN  
STATION 150+00 TO 200+00

SCALE 1" = 200'

ROUTE	SECTION	COUNTY	SHEET NO.
FAS 868	25-00201-00-RS	FRANKLIN	9 OF 10
			CONTRACT 99767



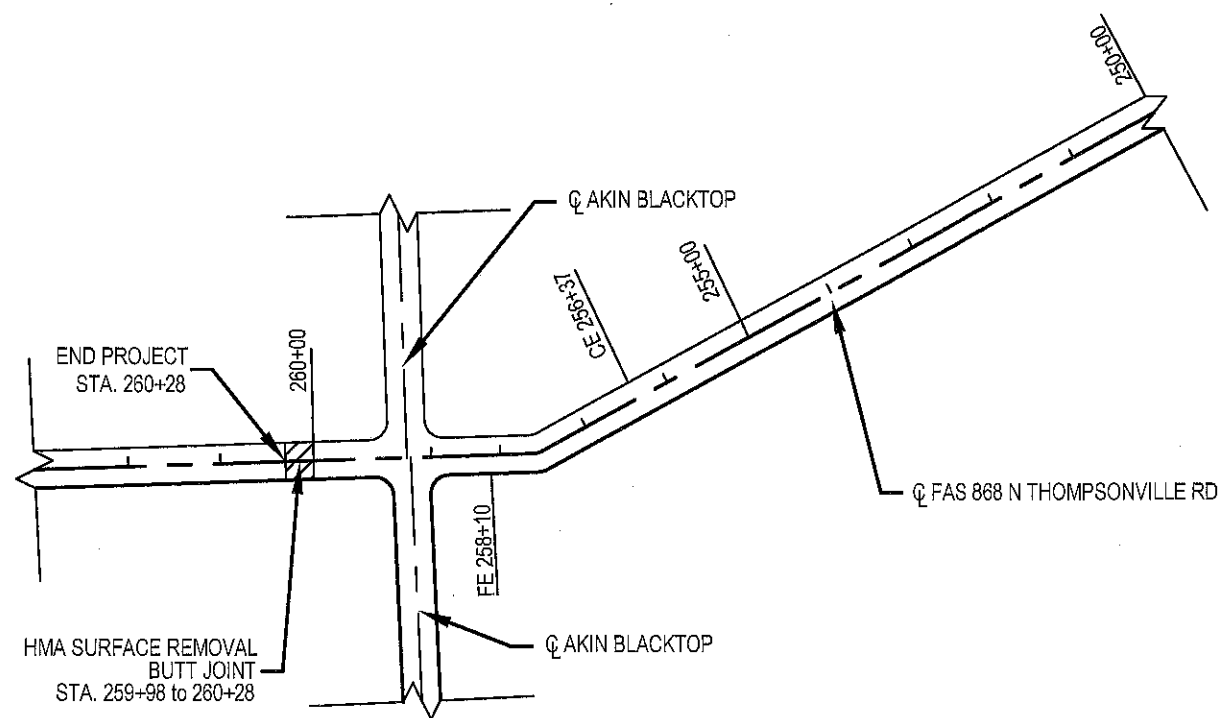
SCALE 1" = 200'



PLAN  
STATION 200+00 TO 250+00

SCALE 1" = 200'

ROUTE	SECTION	COUNTY	SHEET NO.
FAS 868	25-00201-00-RS	FRANKLIN	10 OF 10
CONTRACT 99767			



PLAN  
250+00 TO 260+28