

F.A. RTE.	SECTION	COUNTY	TOTAL SHEETS	SHEET NO.
---	06-00028-00-SW	COOK	13	4
STA.	TO STA.			
FED. ROAD DIST. NO.	ILLINOIS	FED. AID PROJECT		

CONTRACT NO. 63016

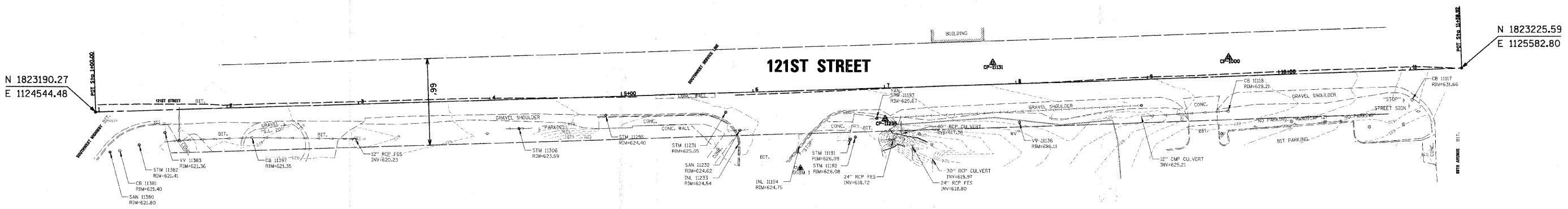


DATE	BY
DATE	BY

CHRISTOPHER B. BURKE
ENGINEERING LTD.
9575 West Higgins Road, Suite 600
Rosemont, Illinois 60018
(847) 823-0500

DATE	BY
DATE	BY

PROFILE SURVEYED
CHECKED
DATE NOTED
STRUCTURE NOTATIONS CHECKED

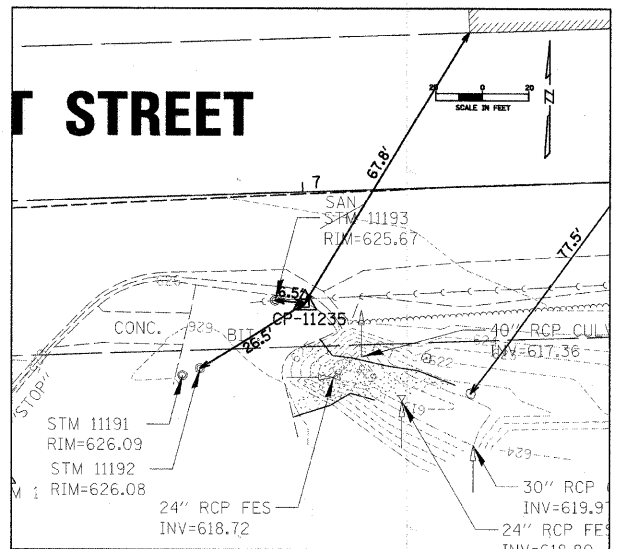


CP NO.	NORTHING	EASTING	DESCRIPTION	STATION	O/S
11235	1823186.908	1125144.685	SET PK NAIL	6+99.74	23.77RT
11131	1823229.721	1125226.405	SET PK NAIL	7+82.87	16.24LT
1000	1823233.998	1125405.698	SET PK NAIL	9+82.20	14.42LT

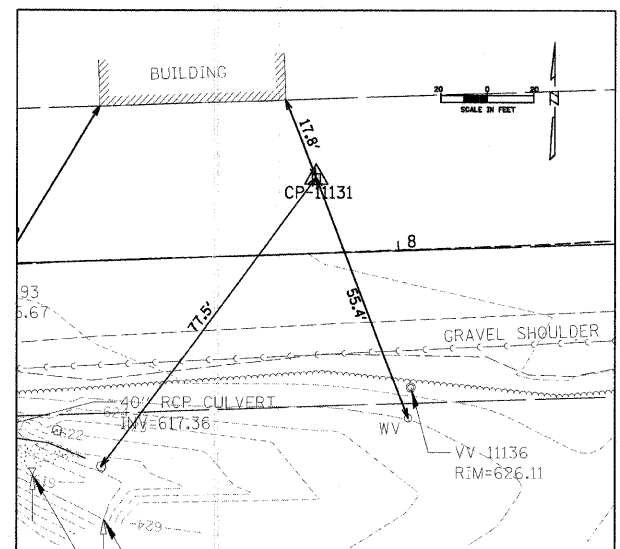
NOTE:
1. ALL TIE DIMENSIONS ARE TO THE CENTER OF THE STRUCTURES.

NO.	DESCRIPTION	ELEV.
OSBM 1	SOUTH FLANGE BOLT OF FIRE HYDRANT IN DRIVE TO METRA STATION	627.22
OSBM 2	PK NAIL SET IN PAVEMENT AT THE CORNER OF 129TH PL. AND 86TH AV. (100.38 CCHD DATUM - REF JOB #05219)	697.81
OSBM 4	IRON PIPE SET IN SHOULDER ON EAST SIDE OF 86TH AV. 64' ± SOUTH OF THE CENTERLINE OF 127TH ST. (668.50 CCHD DATUM - REF JOB #05219)	665.75
OSBM 8	PK NAIL SET IN PAVEMENT ENTRY ON SOUTH SIDE OF 1ST DRIVEWAY SOUTH OF 119TH ST. ON WEST SIDE OF 86TH AV. (695.67 CCHD DATUM - REF JOB #05219)	693.16

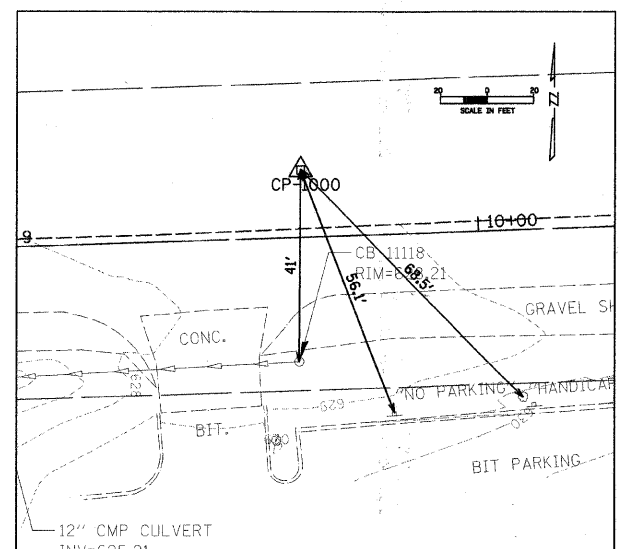
* TO CONVERT TO COOK COUNTY HIGHWAY DEPARTMENT DATUM ADD 2.61' TO ALL ELEVATIONS



CONTROL POINT 11235



CONTROL POINT 11131



CONTROL POINT 1000

REVISIONS		ILLINOIS DEPARTMENT OF TRANSPORTATION ALIGNMENT, TIES AND BENCHMARK VILLAGE OF PALOS PARK
NAME	DATE	
		SCALE DATE 2/14/2008

DRAWN BY MJH
CHECKED BY JCS