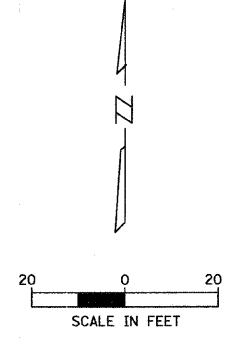


F.A. RTE.	SECTION	COUNTY	TOTAL SHEETS	SHEET NO.
---	06-00028-00-SW	COOK	13	6
STA.	6+00	TO STA.	11+38.92	
FED. ROAD DIST. NO.	ILLINOIS	FED. AID PROJECT		

CONTRACT NO. 63016

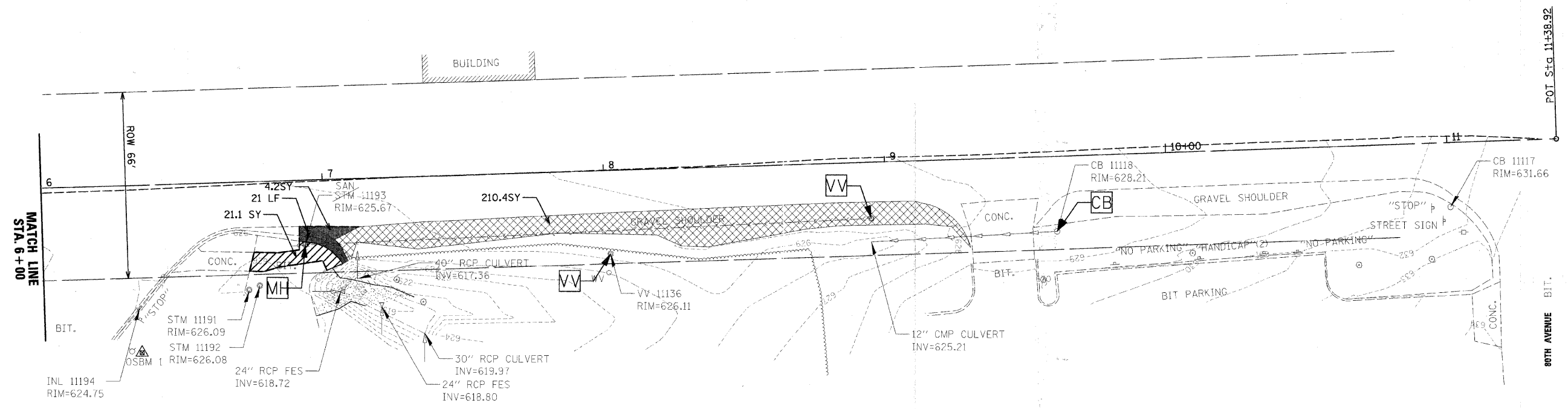


PLAN	SURVEYED	BY	DATE
NOTE BOOK NO.	PLANNED		
	BY OF WAY CHECKED		
	FILE NAME		

**CHRISTOPHER B. BURKE ENGINEERING LTD.**  
 9575 West Higgins Road, Suite 600  
 Rosemont, Illinois 60018  
 (847) 823-0500



PROFILE	SURVEYED	BY	DATE
NOTE BOOK NO.	GRADES CHECKED		
	BY NOTED		
	STRUCTURE NOTATIONS CHFD		



**LEGEND:**

---	SAW CUT
CB	CATCH BASINS TO BE ADJUSTED
VV	VALVE VAULTS TO BE ADJUSTED
MH	MANHOLES TO BE ADJUSTED
[Hatched Box]	COMBINATION CURB AND GUTTER REMOVAL
[Diagonal Lines Box]	DRIVEWAY PAVEMENT REMOVAL
[Cross-hatched Box]	SHOULDER REMOVAL
[Solid Black Box]	PAVEMENT REMOVAL

REVISIONS		ILLINOIS DEPARTMENT OF TRANSPORTATION EXISTING CONDITIONS AND REMOVAL PLAN VILLAGE OF PALOS PARK
NAME	DATE	

SCALE 1" = 20'  
 DATE 2/14/2008  
 DRAWN BY MJH  
 CHECKED BY JGS