

F.A.U. RTE.	SECTION	COUNTY	TOTAL SHEETS	SHEET NO.
1248	99-00080-00-BR	LAKE	46	1

**CONTRACT NO. 63020**

**FOR INDEX OF SHEETS, SEE SHEET NO. 2**

**STATE OF ILLINOIS STANDARDS:**

NUMBER	DESCRIPTION
000001-05	STANDARD SYMBOLS, ABBREVIATIONS AND PATTERNS
280001-04	TEMPORARY EROSION CONTROL SYSTEMS
420001-07	PAVEMENT JOINTS
420101-04	24' (7.2m) JOINTED PCC PAVEMENT
420401-06	BRIDGE APPROACH PAVEMENT
420601-05	24' (7.2m) PAVEMENT
421001-02	BAR REINFORCEMENT FOR CRC PAVEMENT
515001-02	NAME PLATE FOR BRIDGES
542401	METAL END SECTION FOR PIPE CULVERTS
604051-02	FRAME AND GRATE TYPE 11
606001-03	CONCRETE CURB TYPE B AND COMBINATION CONCRETE CURB AND GUTTER
630001-07	STEEL PLATE BEAM GUARDRAIL
631026-04	TRAFFIC BARRIER TERMINAL, TYPE 5
664001-01	CHAIN LINK FENCE
667101	PERMANENT SURVEY MARKERS
701901	TRAFFIC CONTROL DEVICES
780001-01	TYPICAL PAVEMENT MARKINGS
720001	

REGULATORY SPEED LIMITS	TRAFFIC DATA (ADT)
30 MPH	2000 6100 2030 8000

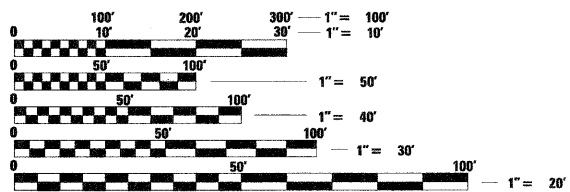
**DESIGN DESIGNATION**

MINOR ARTERIAL

**DESCRIPTION OF BRIDGE REHABILITATION:**

**OLD ELM ROAD BRIDGE-STRUCTURE NO. 049-6870**

REPLACEMENT OF AN EXISTING T-BEAM BRIDGE (049-6863) WITH ASSOCIATED SITE WORK. THE WORK INCLUDES REMOVAL OF THE EXISTING BRIDGE AND FOUNDATION, INSTALLATION OF NEW CONCRETE SHAFTS AND CAP, CONSTRUCTING NEW ABUTMENT AND WINGWALLS INSTALLING A NEW SEMI-INTEGRAL STEEL BEAM BRIDGE, INSTALLING AN AESTHETIC BRIDGE RAILING AND SIDEWALK TEXTURING, INSTALLING STONE RIP-RAP SLOPE PROTECTION, AND RECONSTRUCTING THE ROADWAY AND SIDEWALK APPROACHES TO THE BRIDGE. THE PROJECT ALSO INCLUDES STORM AND SANITARY SEWER WORK.



FULL SIZE PLANS HAVE BEEN PREPARED USING STANDARD ENGINEERING SCALES. REDUCED SIZED PLANS WILL NOT CONFORM TO STANDARD SCALES. IN MAKING MEASUREMENTS ON REDUCED PLANS, THE ABOVE SCALES MAY BE USED.

**J.U.L.I.E.**  
JOINT UTILITY LOCATION INFORMATION FOR EXCAVATION  
1-800-892-0123

**LEAD AGENCY**

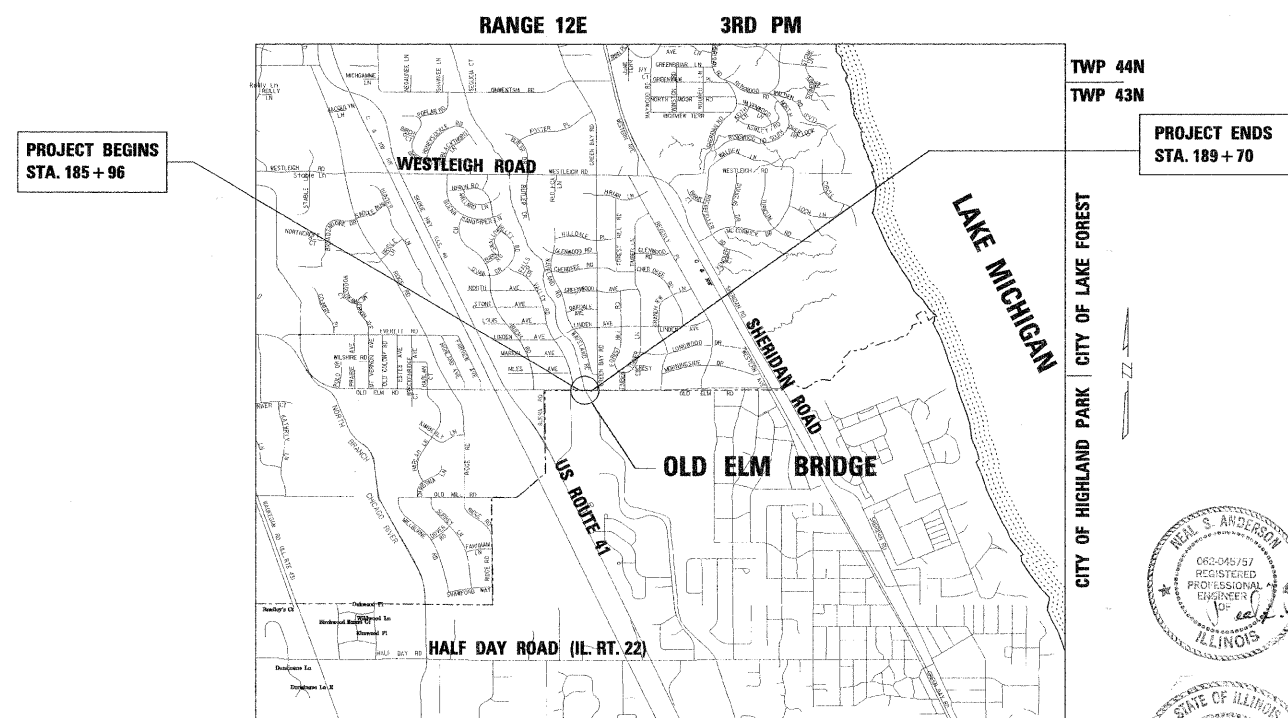


THE CITY OF  
**LAKE FOREST**  
110 EAST LAUREL  
LAKE FOREST, IL. 60045  
847-234-2600

STATE OF ILLINOIS  
DEPARTMENT OF TRANSPORTATION  
DIVISION OF HIGHWAYS

**PLANS FOR PROPOSED  
FEDERAL AID URBAN PROJECT**

**F.A.U. ROUTE 1248  
OLD ELM ROAD BRIDGE OVER THE SKOKIE RIVER  
SECTION 99-00080-00-BR  
PROJECT BRM-8003(103)  
CITY OF LAKE FOREST  
CITY OF HIGHLAND PARK  
LAKE COUNTY  
JOB NO. C-91-405-01**



**LOCATION MAP**

(NOT TO SCALE)  
GROSS AND NET LENGTH OF PROJECT = 374 LIN. FT = .071 MILES

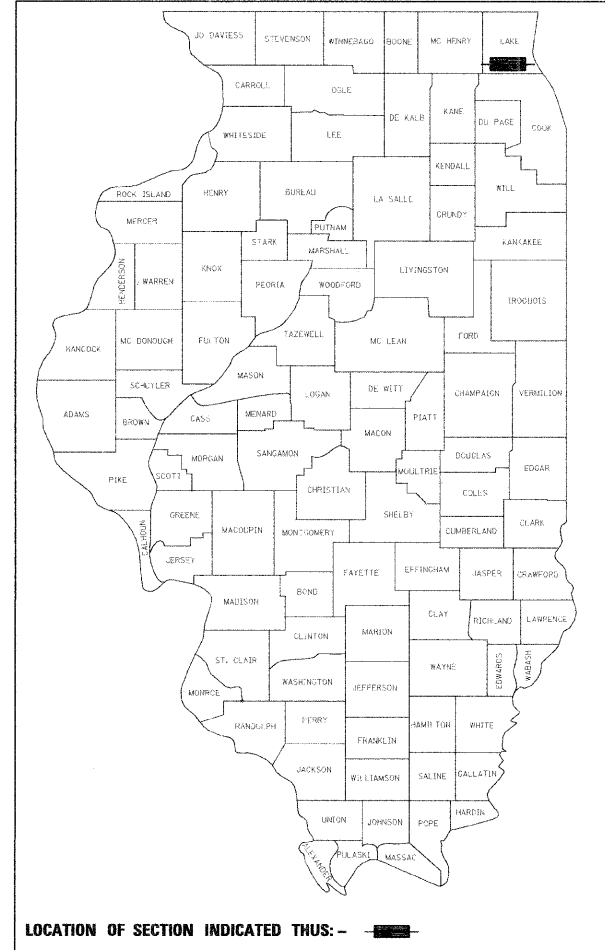


Wiss, Janney, Elstner Associates, Inc.  
Engineers, Architects, Material Scientists  
330 Pingston Road, Northbrook, IL 60062  
(847) 272-7400, Fax: (847) 291-4813  
WJE No. 2006.2324



NEAL S. ANDERSON, PE, SE  
ILLINOIS LICENSED PROFESSIONAL ENGINEER  
NO. 062-045757  
EXPIRES 11/30/2008

ILLINOIS LICENSED STRUCTURAL ENGINEER  
NO. 081-004947  
EXPIRES 11/30/2009



LOCATION OF SECTION INDICATED THIS: -

STATE OF ILLINOIS  
DEPARTMENT OF TRANSPORTATION  
DIVISION OF HIGHWAYS

APPROVED *7-15 20 08*  
*James M. Miller*  
City of Lake Forest, City Surveyor and Engineer

Passed *FEBRUARY 20 20 08*  
*Christina Holt*  
District #1 Engineer of Local Roads & Streets

Releasing for Bid  
Based on Limited  
Review *FEBRUARY 20, 20 08*  
*Diane M. O'Keefe*  
Deputy Director of Highways Region #1 Engineer

**PRINTED BY THE AUTHORITY  
OF THE STATE OF ILLINOIS**

DATE: 01/25/08  
FILENAME: F:\2006\2301-2400\2006.2324-NAnderson-Old Elm Design\MICROSTATION-FINAL\C-01.dgn  
DOT Associate Field Engineer: Kevin Stallworth, P.E. (847)705-4169

**CONTRACT NO. 63020**