

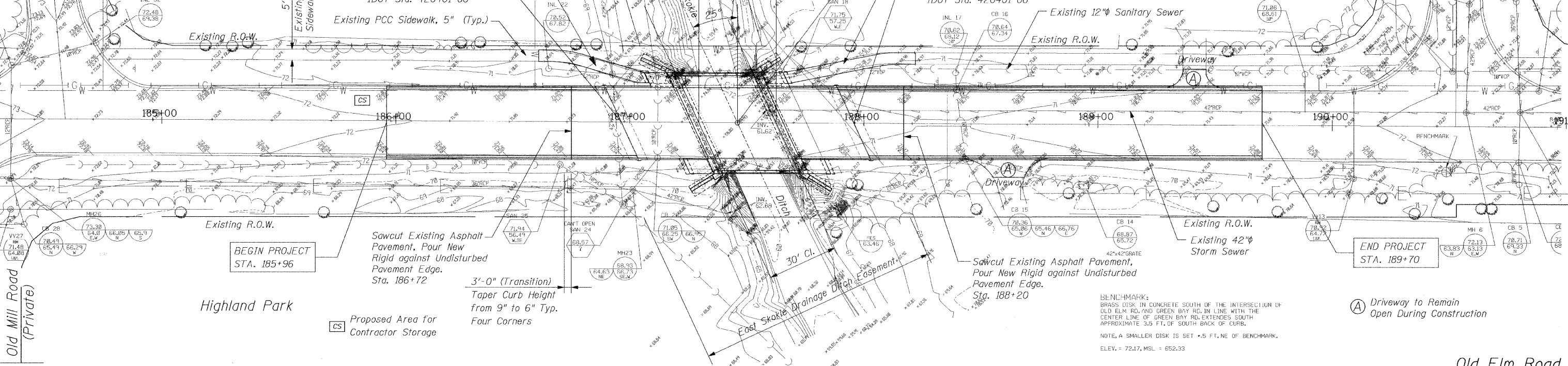
Benchmark # 17:
Standard City of Lake Forest Control
Monument-Brass Disk in Concrete.
Elevation 652.329 (USGS)

F-A-U RTE.	SECTION	COUNTY	TOTAL SHEETS	SHEET NO.
124B	99-00080-00-BR	LAKE	42	8
STA. 185+96		TO STA. 189+70		
FED. ROAD DIST. NO.		ILLINOIS	FED. AID PROJECT	

Valley Road

Lake Forest

63020
Green Bay
Road

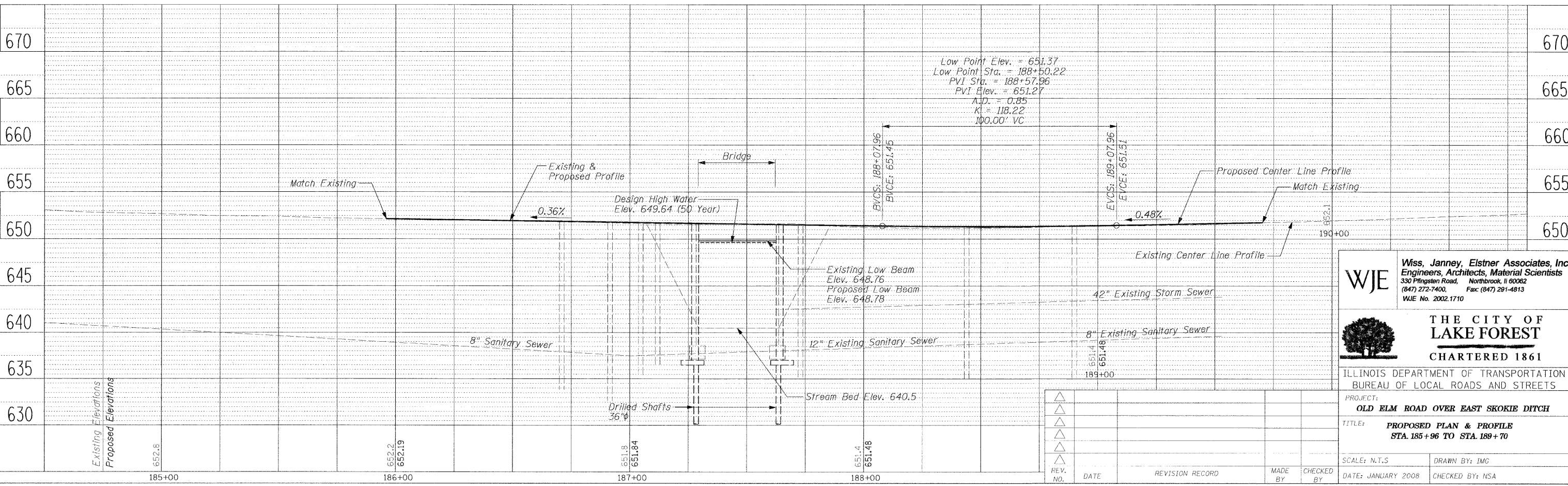


BEGIN PROJECT
STA. 185+96

END PROJECT
STA. 189+70

BENCHMARK:
BRASS DISK IN CONCRETE SOUTH OF THE INTERSECTION OF
OLD ELM RD. AND GREEN BAY RD. IN LINE WITH THE
CENTER LINE OF GREEN BAY RD. EXTENDS SOUTH
APPROXIMATE 3.5 FT. OF SOUTH BACK OF CURB.
NOTE, A SMALLER DISK IS SET .5 FT. NE OF BENCHMARK.
ELEV. = 72.17, MSL = 652.33

(A) Driveway to Remain
Open During Construction



WJE
Wiss, Janney, Elstner Associates, Inc.
Engineers, Architects, Material Scientists
330 Pfingsten Road, Northbrook, IL 60062
(847) 272-7400 Fax: (847) 291-4813
WJE No. 2002.1710

**THE CITY OF
LAKE FOREST**
CHARTERED 1861

ILLINOIS DEPARTMENT OF TRANSPORTATION
BUREAU OF LOCAL ROADS AND STREETS

PROJECT:
OLD ELM ROAD OVER EAST SKOKIE DITCH

TITLE:
**PROPOSED PLAN & PROFILE
STA. 185+96 TO STA. 189+70**

SCALE: N.T.S. DRAWN BY: IMG
DATE: JANUARY 2008 CHECKED BY: NSA

REV. NO.	DATE	REVISION RECORD	MADE BY	CHECKED BY

DATE: 2/2/2008
 FILENAME: P:\2006\2301-2400\2006.2324-NAnderson-Old Elm
 DESIGN: MICHAEL CRISTOFANON-FINAL C-08.dgn
 PROFILE: SURVEYED, PLOTTED, CHECKED, BALANCED
 NOTE BOOK: DESIGNATION: FINAL
 PLAN: SURVEYED, PLOTTED, CHECKED, BALANCED
 NOTE BOOK: DESIGNATION: FINAL
 CAD FILE NAME: