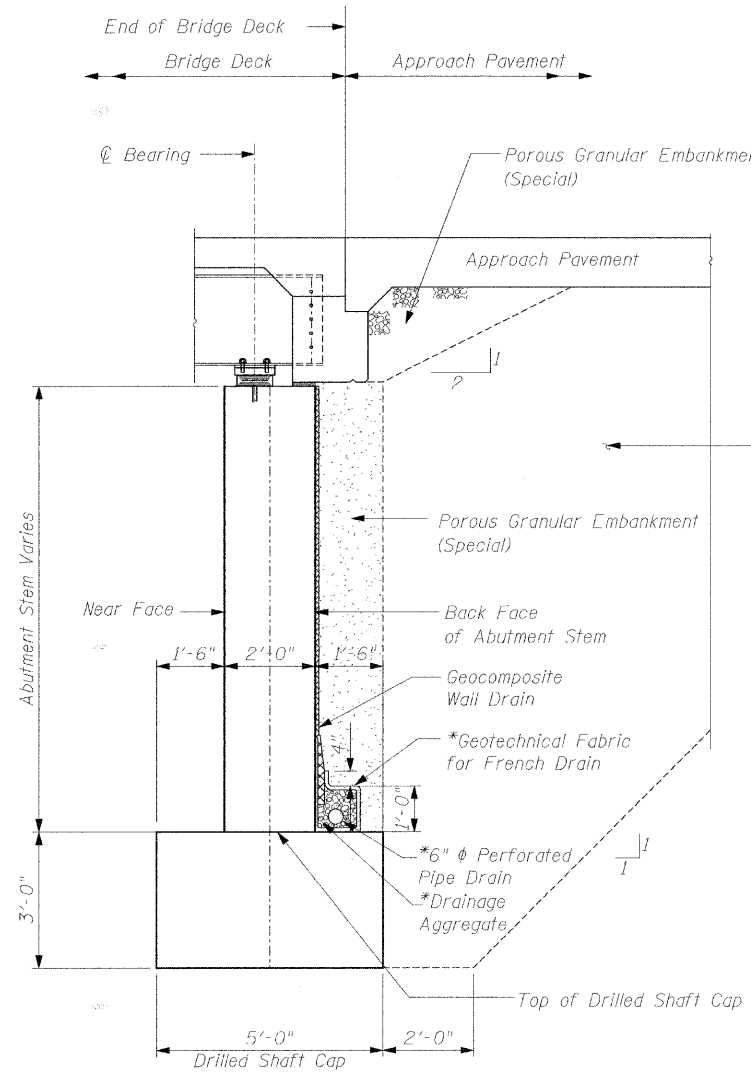


EAST AND WEST ABUTMENT BILL OF MATERIAL

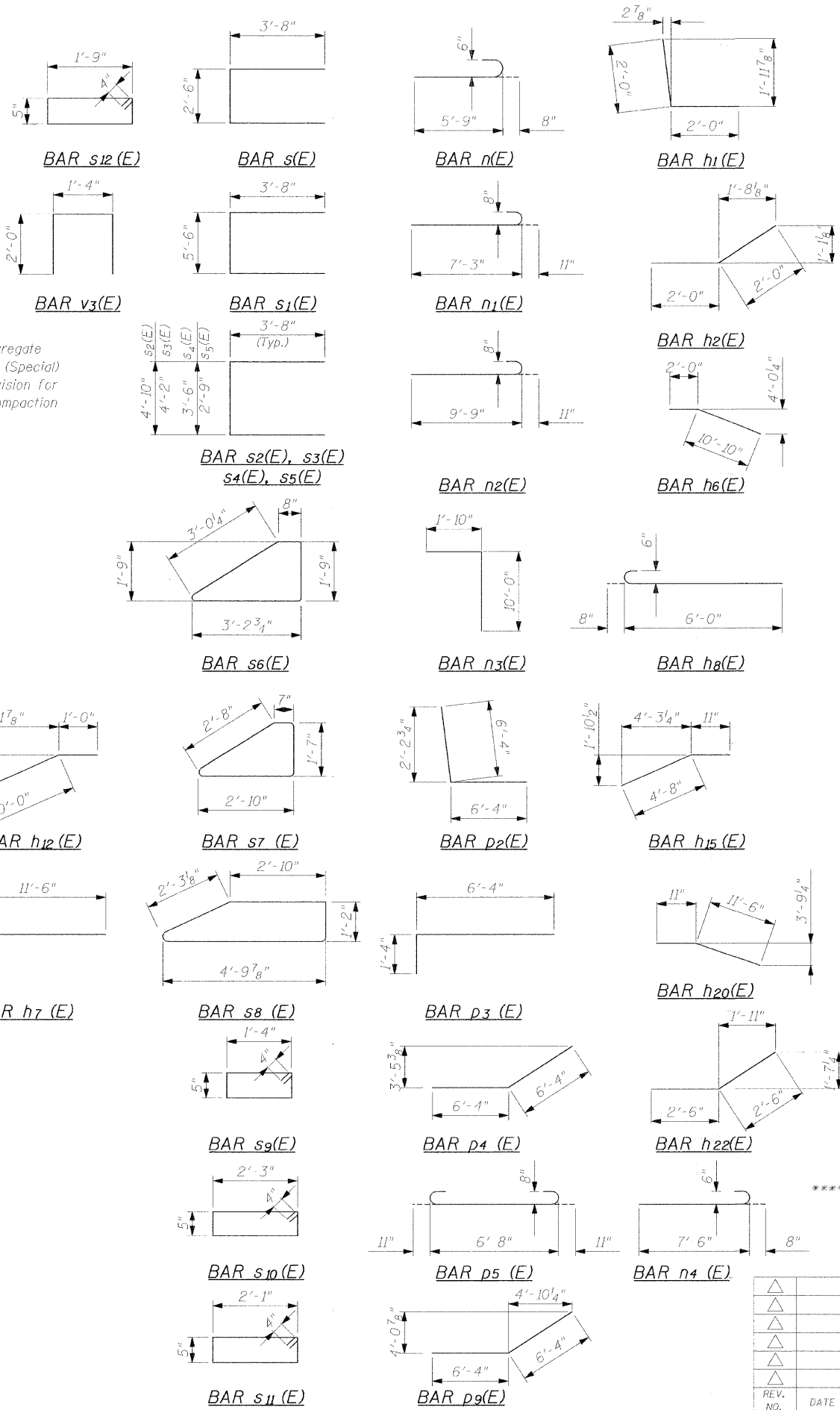


Light Weight Aggregate Granular Backfill (Special)
See Special Provision for Gradation and Compaction Requirements.

*Included in the cost of "Pipe Underdrains for Structures"

**TYPICAL SECTION THRU ABUTMENT
BACKFILL AND PIPE UNDERDRAIN DETAILS**
(Wingwall Similar)

Note:
Replace and Compact Disturbed Soil at the Toe of Caisson Cap and Face of Wingwalls with Suitable Material prior to Backfilling Walls.



Bar	No.	Size	Length	Shape
n(E)	58	#5	48'-0"	—
h1(E)	50	#5	4'-0"	—
h2(E)	22	#5	4'-0"	—
h3(E)	16	#5	5'-8"	—
h4(E)	20	#5	12'-6"	—
h5(E)	4	#5	15'-5"	—
h6(E)	6	#5	12'-10"	—
h7(E)	20	#5	12'-4"	—
h8(E)	6	#5	6'-8"	—
h9(E)	15	#5	5'-3"	—
h10(E)	26	#5	9'-9"	—
h11(E)	4	#5	17'-7"	—
h12(E)	3	#5	13'-3"	—
h13(E)	2	#5	5'-5"	—
h14(E)	2	#5	3'-6"	—
h15(E)	2	#5	5'-7"	—
h16(E)	32	#5	4'-0"	—
h17(E)	3	#5	13'-6"	—
h18(E)	28	#5	10'-10"	—
h19(E)	3	#5	13'-6"	—
h20(E)	3	#5	12'-5"	—
h21(E)	9	#5	3'-5"	—
h22(E)	28	#5	5'-0"	—
n1(E)	187	#6	6'-5"	—
n2(E)	36	#8	8'-2"	—
n3(E)	72	#8	10'-8"	—
n4(E)	144	#10	11'-10"	—
n5(E)	32	#6	8'-2"	—
p(E)	24	#8	45'-6"	—
p1(E)	24	#8	13'-9"	—
p2(E)	48	#8	12'-8"	—
p3(E)	32	#8	7'-8"	—
p4(E)	24	#8	12'-8"	—
p5(E)	16	#8	8'-6"	—
p6(E)	24	#8	4'-0"	—
p7(E)	48	#8	15'-6"	—
p8(E)	24	#8	12'-8"	—
p9(E)	24	#8	14'-10"	—
s(E)	442	#5	9'-10"	—
s1(E)	24	#5	12'-10"	—
s2(E)	4	#5	12'-2"	—
s3(E)	4	#5	11'-6"	—
s4(E)	4	#5	10'-10"	—
s5(E)	4	#5	10'-1"	—
s6(E)	14	#5	8'-8"	—
s7(E)	29	#5	7'-8"	—
s8(E)	17	#5	11'-1"	—
s9(E)	39	#4	4'-2"	—
s10(E)	11	#4	6'-0"	—
s11(E)	4	#4	5'-8"	—
s12(E)	5	#4	5'-0"	—
sp	12	#4	42'-0"	—

Bar	No.	Size	Length	Shape	
v(E)	229	#6	10'-1"	—	
v1(E)	15	#6	13'-0"	—	
v2(E)	34	#8	13'-0"	—	
v3(E)	110	#5	5'-4"	—	
v4(E)	24	#8	10'-0"	—	
v5(E)	8	#8	13'-7"	—	
v6(E)	17	#8	12'-3"	—	
v7(E)	7	#6	13'-7"	—	
v8(E)	11	#6	12'-3"	—	
v9(E)	12	#6	10'-0"	—	
v10(F)	22	#6	5'-0"	—	
v11(E)	5	#8	16'-9"	—	
v12(E)	9	#6	16'-9"	—	
v13(E)	5	#6	14'-10"	—	
v14(E)	10	#8	14'-10"	—	
v15(E)	8	#8	16'-4"	—	
v16(E)	9	#8	14'-10"	—	
v17(E)	8	#6	16'-4"	—	
v18(E)	144	#10	40'-0"	—	
Concrete Structures				Cu. Yd.	205
Reinforcement Bars, Epoxy Coated				Pound	48050
Reinforcement Bars,				Pound	24785
Drilled Shaft in Soil 36"Ø				Cu. Yd.	130
Pipe Underdrains for Structures, 6"				Foot	140

Notes:
Reinforcement bars designated (E) shall be epoxy coated.

***** Cost of Spiral Incidental with Drilled Shaft in Soil.

REV. NO.	DATE	REVISION RECORD	MADE BY	CHECKED BY

WJE Wiss, Janney, Elstner Associates, Inc.
Engineers, Architects, Material Scientists
330 Pingston Road, Northbrook, IL 60062
(847) 272-7400, Fax: (847) 291-4813
WJE No. 2006.2324

THE CITY OF LAKE FOREST
CHARTERED 1861

ILLINOIS DEPARTMENT OF TRANSPORTATION
BUREAU OF LOCAL ROADS AND STREETS

PROJECT:
OLD ELM ROAD OVER EAST SKOKIE DITCH
STA. 187+46 LAKE COUNTY
STRUCTURE NO. 049-6870

TITLE:
SUBSTRUCTURE BILL OF MATERIAL AND DETAILS

SCALE: N.T.S. DRAWN BY: IMG
DATE: JANUARY 2008 CHECKED BY: NSA