

F.A.U. RLE	SECTION	COUNTY	TOTAL SHEETS	SHEET NO.
124B	99-00080-00-BR	LAKE	46	44
STA. 185+96		TO STA. 189+70		
FED. ROAD DIST. NO.	ILLINOIS	FED. AID PROJECT		

63020

GENERAL NOTES

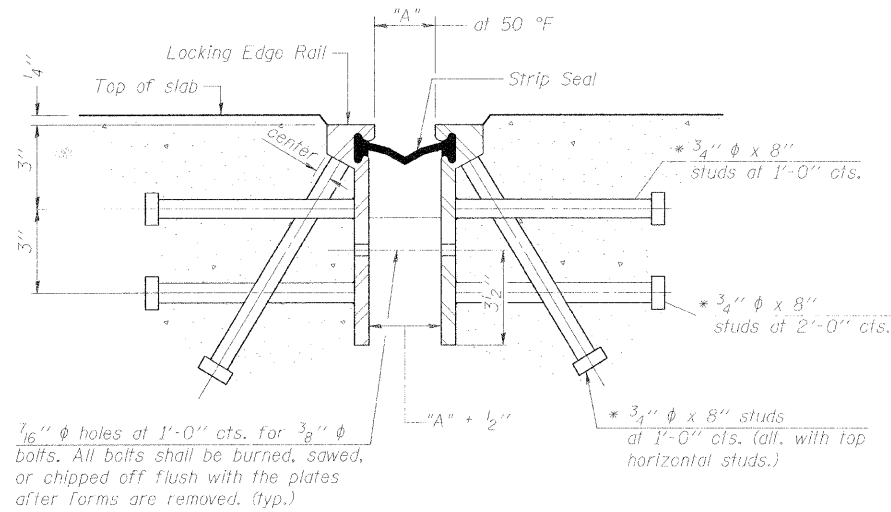
The strip seal shall be made continuous and shall have a minimum thickness of 1/4". The configuration of the strip seal shall match the configuration of the Locking Edge Rails.

The height and thickness of the Locking Edge Rails shown are minimum dimensions. The actual configuration of the Locking Edge Rails and matching strip seal may vary from manufacturer to manufacturer. Flanged edge rails will not be allowed.

Locking Edge Rails may be spliced at slope discontinuities and stage construction joints.

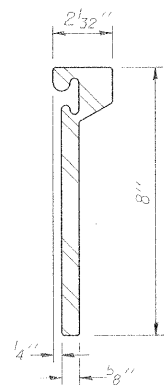
The manufacturer's recommended installation methods shall be followed.

The joint opening and deck dimensions detailed on the superstructure are based on a preformed joint seal. If the contractor elects to use the alternate strip seal joint, the opening and deck dimensions shall be modified according to the dimensions detailed on this sheet. Required modifications shall be made at no additional cost to the State.

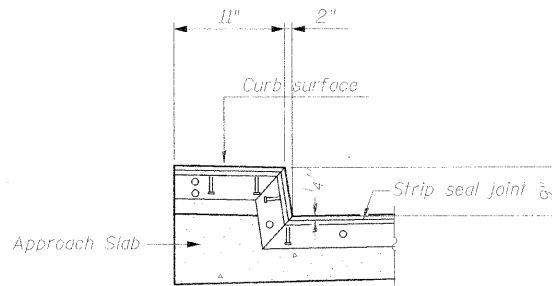


SECTION THRU ROLLED RAIL EXP. JOINT
(Studs Required)

* Granular or solid flux filled headed studs conforming to Article 1006.32 of the Std. Specs., automatically end welded.

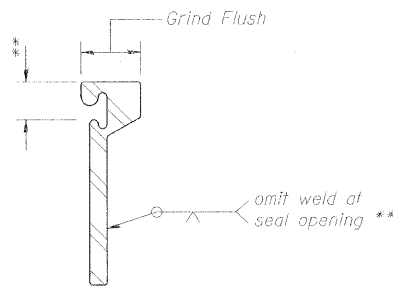


ROLLED (EXTRUDED) RAIL
(Galvanized Finish)



CURB DETAILS AT EXPANSION JOINT*

* Shorter plates with a single row of studs at 12" centers may be necessary on medians which are shallower than 9". See manufacturer's recommendation.



LOCKING EDGE RAIL SPLICE

The inside of the locking edge rail groove shall be free of weld residue.

TYPICAL END TREATMENTS

APPROACH PAVEMENT JOINT SYSTEM - EXPANSION (STRIP SEAL)

WJE Wiss, Janney, Elstner Associates, Inc.
Engineers, Architects, Material Scientists
330 Pingston Road, Northbrook, IL 60062
(847) 272-7400, Fax: (847) 291-4813
WJE No. 2006.2324

THE CITY OF LAKE FOREST
CHARTERED 1861

ILLINOIS DEPARTMENT OF TRANSPORTATION
BUREAU OF LOCAL ROADS AND STREETS

PROJECT: **OLD ELM ROAD OVER EAST SKOKIE DITCH**

TITLE: **BRIDGE APPROACH PAVEMENT JOINT SYSTEM-EXPANSION**

SCALE: N.I.S. DRAWN BY: IMG
DATE: JANUARY 2008 CHECKED BY: NSA

△					
△					
△					
△					
△					
REV. NO.	DATE	REVISION RECORD	MADE BY	CHECKED BY	