

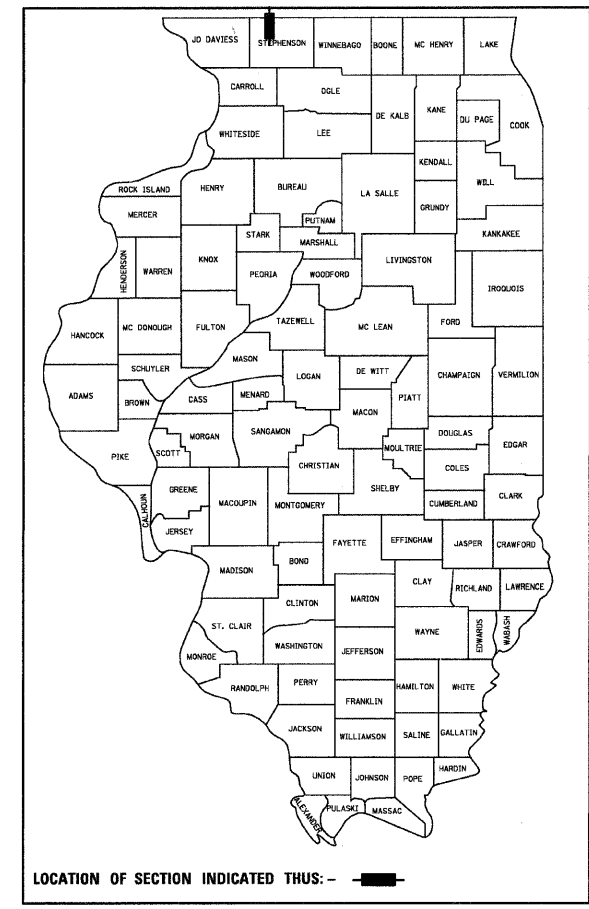
F.A.S. RTE.	SECTION	COUNTY	TOTAL SHEETS	SHEET NO.
1087	107T-1	STEPHENSON	47	1

STATE OF ILLINOIS
DEPARTMENT OF TRANSPORTATION
DIVISION OF HIGHWAYS

**PROPOSED
HIGHWAY PLANS**

FAS ROUTE 1087 (IL 73)
SECTION 107T-1
PROJECT ACRS-1087(108)
STEPHENSON COUNTY
CULVERT REMOVAL AND REPLACEMENT

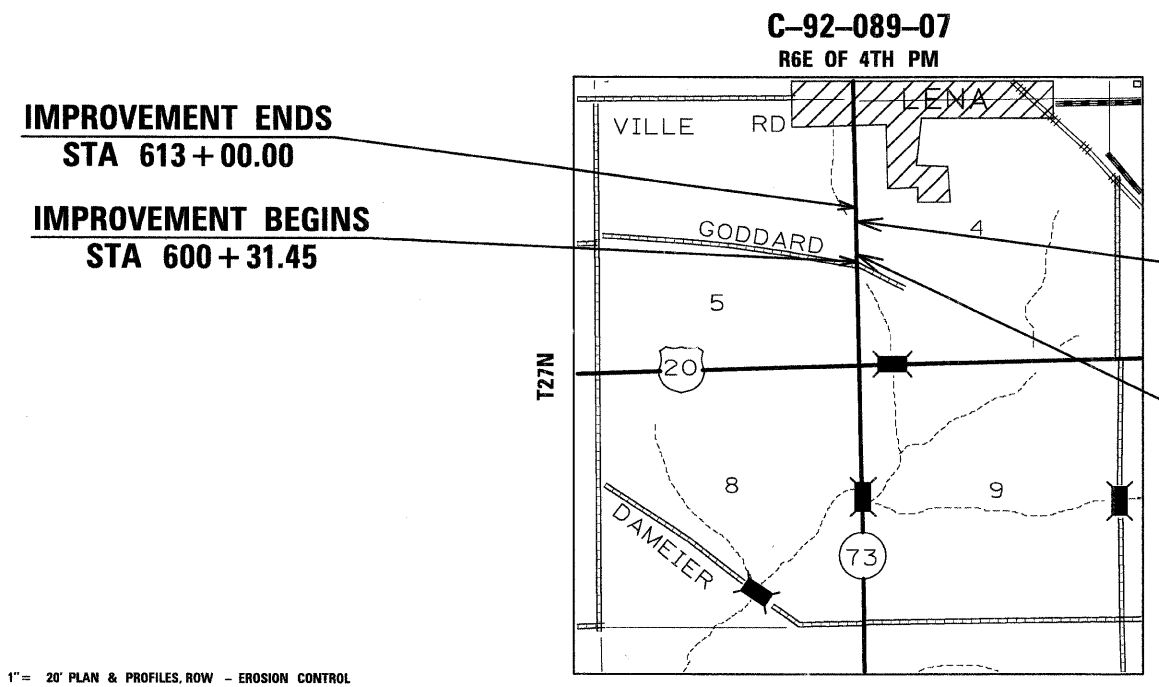
D-92-113-06



INDEX OF SHEETS

- 1 COVER SHEET
- 2 GENERAL NOTES, STANDARDS AND COMMITMENTS
- 3 SUMMARY OF QUANTITIES
- 4-5 TYPICAL SECTIONS
- 6-7 SCHEDULE OF QUANTITIES
- 8 TIE POINTS AND BENCHMARKS
- 9-11 PLAN AND PROFILE
- 12 DETOUR ROUTE DETAIL
- 13-15 RIGHT-OF-WAY AND EROSION CONTROL
- 16-17 CULVERT DETAILS
- 18-19 BORING LOGS
- 20 DROP BOX #1
- 21 PIPE HANDRAIL DETAILS
- 22-27 CULVERT PROFILES
- 28-35 DISTRICT STANDARDS
- 36-47 CROSS SECTIONS
HIGHWAY STANDARDS

CONSULTANT CONTACT: MARY BLOXDORF (217) 544-8477
 SQUAD LEADER: TRACI HELFRICH (815) 284-5932
 PROJECT ENGINEER: MASOOD AHMAD



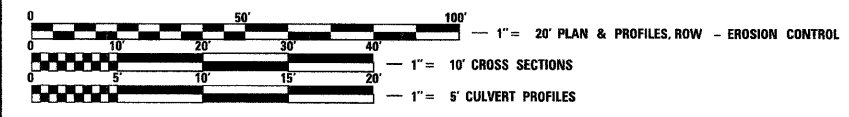
IMPROVEMENT ENDS
STA 613+00.00

IMPROVEMENT BEGINS
STA 600+31.45



EX SN 089-1031
PR SN 089-1111
STA 609+82.56, 45° SKEW

EX SN NA
PR SN 089-1121
STA 600+69.42, 0° SKEW

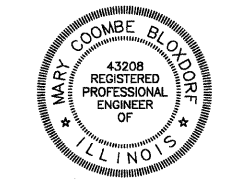


FULL SIZE PLANS HAVE BEEN PREPARED USING STANDARD ENGINEERING SCALES. REDUCED SIZED PLANS WILL NOT CONFORM TO STANDARD SCALES. IN MAKING MEASUREMENTS ON REDUCED PLANS, THE ABOVE SCALES MAY BE USED.

J.U.L.I.E.
JOINT UTILITY LOCATION INFORMATION FOR EXCAVATION
1-800-892-0123

KENT TOWNSHIP, SECTION 4 & 5
CONTRACT NO. 64C64

GROSS LENGTH OF PROJECT = 1268.55 LIN. FT. = 0.240 MI.
NET LENGTH = 1268.55 LIN. FT. = 0.240 MI.



Mary Coombe Bloxdorf
MARY COOMBE BLOXDORF, P.E., S.E.
DATE Jan 21, 2008
EXPIRES NOVEMBER 30, 2009

STATE OF ILLINOIS
DEPARTMENT OF TRANSPORTATION
DIVISION OF HIGHWAYS

SUBMITTED January 25, 2008

Steve F. Ryan
DEPUTY DIRECTOR OF HIGHWAYS, REGION ENGINEER

March 21, 2008
Eric E. Hansen
ENGINEER OF DESIGN AND ENVIRONMENT

March 21, 2008
Christine M. Reed
DIRECTOR OF HIGHWAYS, CHIEF ENGINEER

PRINTED BY THE AUTHORITY
OF THE STATE OF ILLINOIS

COOMBE-BLOXDORF P.C.
Engineers / Land Surveyors
Springfield, Illinois
Design Firm License No. 184-002703