

SQUAD ENGINEER: SHANNA DOLLINGER (815) 284-5989

PROJECT ENGINEER: BECKY MARRUFFO

CONTRACT NO. 64C70

F.A.P. RTE.	SECTION	COUNTY	TOTAL SHEETS	SHEET NO.
611	102T	HENRY	41	1

42

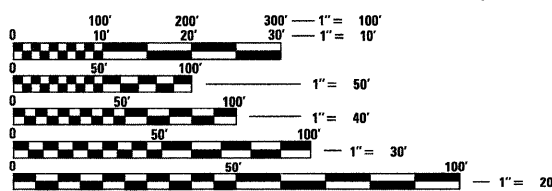
INDEX OF SHEETS

- 1 COVER SHEET
- 2 SUMMARY OF QUANTITIES
- 3-4 GENERAL NOTES
- 5-7 TYPICAL SECTIONS
- 8-10 SCHEDULE OF QUANTITIES
- 11-12 HORIZONTAL & VERTICAL CONTROL
- 13 PLAN & PROFILE
- 14-16 STAGING AND TRAFFIC CONTROL
- 17 DRAINAGE & EROSION CONTROL
- 18 BORING LOGS
- 19-20A CULVERT DETAILS → 20A BAR SPlicer DETAILS
- 21 SHEET PILING DETAILS
- 22 HOT-MIX ASPHALT SHOULDERS (23.4a)
DELINEATOR AND POST (37.4)
TYPICAL BENCHING ON EXISTING EMBANKMENT (50.4)
LETTERING FOR NAME PLATE (89.4)
- 23 TREE REPLACEMENT SCHEDULE (90.4)
STOP LINE SIGN FOR TEMPORARY SIGNALS (99.4)
EROSION CONTROL DETAILS FOR SILT FENCE (29.2)
INFORMATIONAL WARNING SIGN (FOR NARROW TRAVEL LANES) (39.2)
- 24 WITNESS MARKER & PERMANENT SURVEY MARKERS, TYPE II (66.2)
ROUGH GROOVED SURFACE SIGN (91.2)
- 25 CONCRETE COLLARS FOR PIPE OR BOX CULVERT EXTENSIONS (33.1)
- 26 TRAFFIC CONTROL FOR ROAD CLOSURE (40.1)
- 27 TYPICAL PAVEMENT MARKINGS (41.1)
- 28-29 DETAILS OF PLANTING AND BRACING TREES (92.1)
- 30-31 IL 81 CROSS SECTIONS

HIGHWAY STANDARDS

- 280001-04 TEMPORARY EROSIONS CONTROL SYSTEMS
- 420001-07 PAVEMENT JOINTS
- 442201-03 CLASS C & D PATCHES
- 515001-02 NAME PLATES FOR BRIDGES
- 635001 DELINEATORS
- 666001 RIGHT-OF-WAY MARKERS
- 667101 PERMANENT SURVEY MARKERS
- 701001-01 OFF-RD OPERATIONS, 2L, 2W, MORE THAN 4.5M (15') AWAY
- 701006-02 OFF-RD OPERATIONS, 2L, 2W 4.5M (15') TO 600MM (24") FROM PAVEMENT EDGE
- 701011-01 OFF-RD MOVING OPERATIONS, 2L, 2W, DAY ONLY
- 701201-02 LANE CLOSURE, 2L, 2W, DAY ONLY FOR SPEEDS > 45 MPH
- 701301-02 LANE CLOSURE, 2L, 2W, SHORT TIME OPERATIONS
- 701311-02 LANE CLOSURE, 2L, 2W, MOVING OPERATION DAY ONLY
- 701321-09 LANE CLOSURE, 2L, 2W, BRIDGE REPAIR WITH BARRIER
- 701901 TRAFFIC CONTROL DEVICES
- 704001-04 TEMPORARY CONCRETE BARRIER
- 720011 METAL POSTS FOR SIGNS, MARKERS, & DELINEATORS
- 728001 TELESCOPING STEEL SIGN SUPPORT
- 729001 APPLICATIONS OF TYPES A & B METAL POSTS (FOR SIGNS & MARKERS)
- 780001-01 TYPICAL PAVEMENT MARKINGS
- 886001 DETECTOR LOOP INSTALLATIONS
- 886006 TYPICAL LAYOUT FOR DETECTION LOOPS
- 000001-05 STANDARD SYMBOLS, ABBREVIATIONS, & PATTERNS
- 001001-01 AREAS OF REINFORCEMENT BARS
- 001006 DECIMAL OF AN INCH & OF A FOOT

ANDOVER TOWNSHIP SECTION 8, 9



FULL SIZE PLANS HAVE BEEN PREPARED USING STANDARD ENGINEERING SCALES. REDUCED SIZED PLANS WILL NOT CONFORM TO STANDARD SCALES. IN MAKING MEASUREMENTS ON REDUCED PLANS, THE ABOVE SCALES MAY BE USED.

J.U.L.I.E.
JOINT UTILITY LOCATION INFORMATION FOR EXCAVATION
1-800-892-0123

CONTRACT NO. 64C70

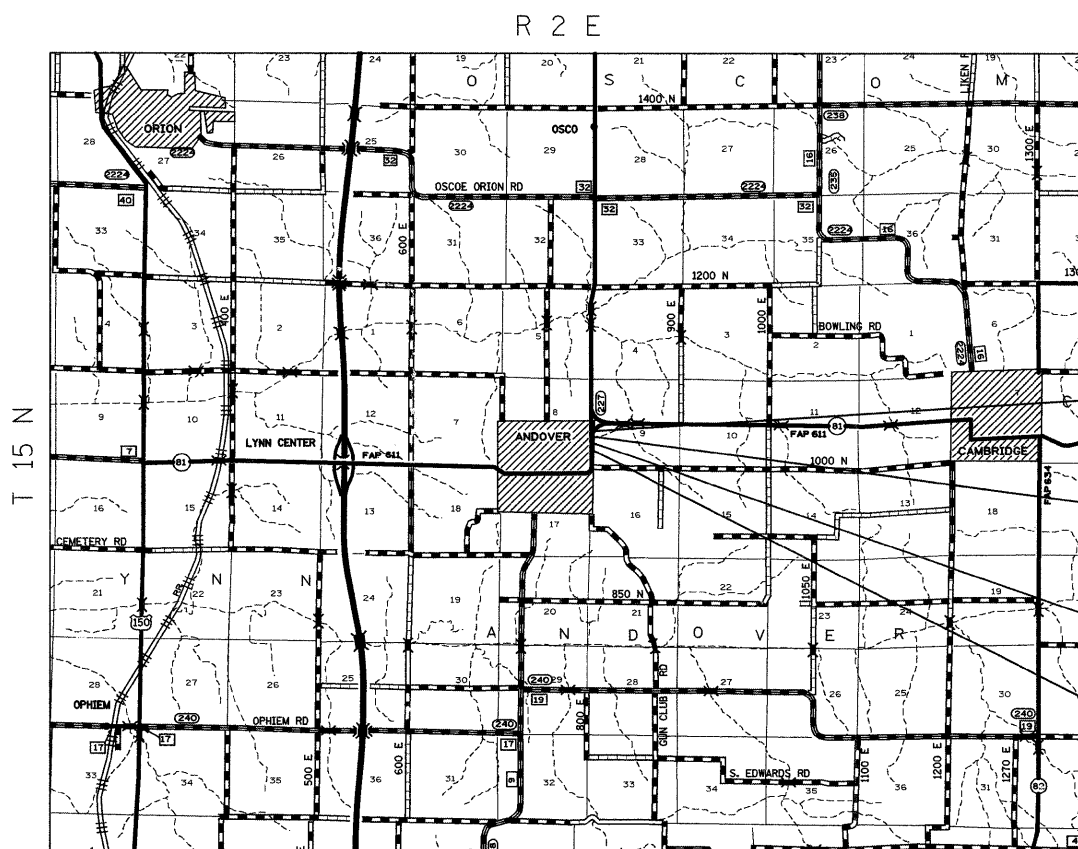
STATE OF ILLINOIS

DEPARTMENT OF TRANSPORTATION

DIVISION OF HIGHWAYS

PROPOSED HIGHWAY PLANS

FAP ROUTE 611 (IL 81)
SECTION 102T
PROJECT ACF-0611(012)
HENRY COUNTY
C-92-110-07



MAP IS NOT TO SCALE

IMPROVMENT ENDS
STA 287 + 25

SECTION ENDS
STA 285 + 28.48

SECTION BEGINS
STA 284 + 32.47

IMPROVMENT BEGINS
STA 281 + 90

BOX CULVERT REMOVAL AND REPLACEMENT

NET LENGTH OF PROJECT = 535 FEET = 0.10 MILES
GROSS LENGTH OF PROJECT = 535 FEET = 0.10 MILES

STATE OF ILLINOIS
DEPARTMENT OF TRANSPORTATION
DIVISION OF HIGHWAYS

SUBMITTED *January 31, 2008*

Shirley F. Ryan
DEPUTY DIRECTOR OF HIGHWAYS, REGION ENGINEER

March 21, 2008
Eric E. Harman
INTERIM ENGINEER OF DESIGN AND ENVIRONMENT

March 21, 2008
Christine M. Reed
DIRECTOR OF HIGHWAYS, CHIEF ENGINEER

**PRINTED BY THE AUTHORITY
OF THE STATE OF ILLINOIS**