

# STAGE 1

F.A.P. RTE.	SECTION	COUNTY	TOTAL SHEETS	SHEET NO.
.611	102T	HENRY	41	14
STA.		TO STA.		
FED. ROAD DIST. NO.		ILLINOIS FED. AID PROJECT		



TEMPORARY PAVEMENT  
STA 281+90 - STA 287+25  
4.75' WIDE

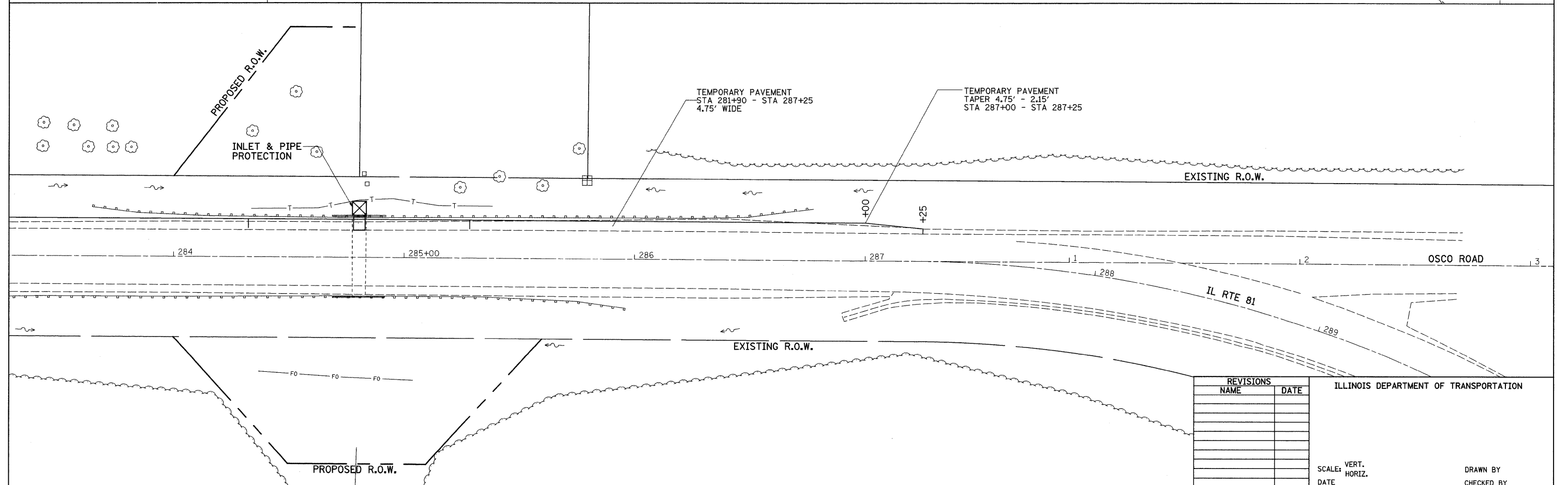
PROPOSED R.O.W.

INLET & PIPE PROTECTION

INSTALL 5' PIPE CULVERT W/ CONCRETE COLLAR

LEGEND	
	= WORK AREA
	= SIGN
	= TYPE III BARRICADE
	= DRUM WITH STEADY BURNING LIGHT
	= DOUBLE VERTICAL PANEL
	= TYPE C BIDIRECTIONAL REFLECTOR
	= STEADY BURNING LIGHTS & DOUBLE VERTICAL PANELS
	= TRAFFIC SIGNAL
	= INDUCTION LOOP DETECTOR
	= IMPACT ATTENUATORS, TEMPORARY (NON-REDIRECTIVE), TEST LEVEL 3

SEE STANDARD 701301  
FOR SIGNING DURING THIS STAGE



REVISIONS	
NAME	DATE

ILLINOIS DEPARTMENT OF TRANSPORTATION

SCALE: VERT. \_\_\_\_\_  
HORIZ. \_\_\_\_\_

DATE \_\_\_\_\_

DRAWN BY \_\_\_\_\_  
CHECKED BY \_\_\_\_\_

PLOT DATE = Thu Jan 31 07:37:55 2008  
FILE NAME = C:\p\projects\211785\211785.dwg  
PLOT SCALE = 2:11785 / IN.  
USER NAME = jor-denhd