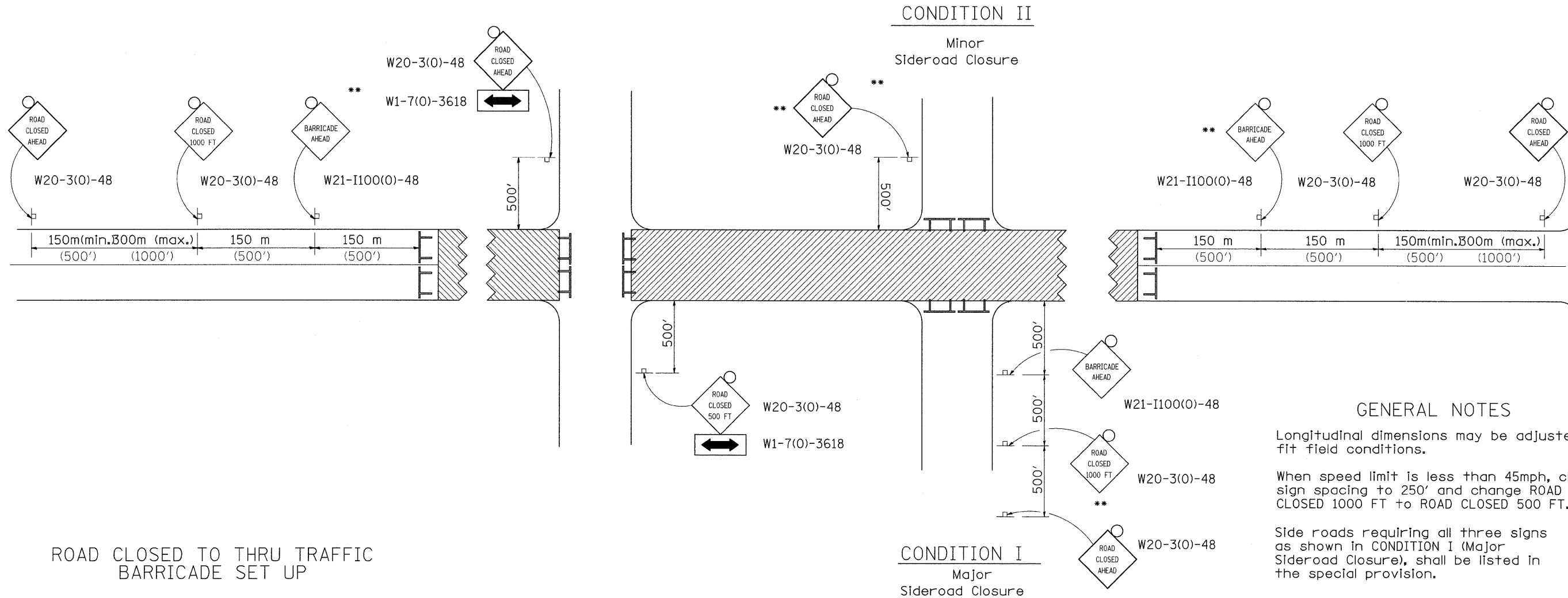
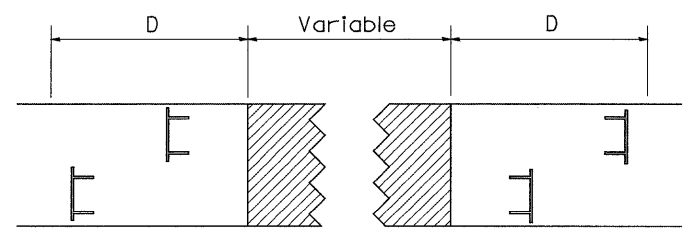


F.A.P. RTE.	SECTION	COUNTY	TOTAL SHEETS	SHEET NO.
611	1021	HENRY	41	27
STA. _____		TO STA. _____		
FED. ROAD DIST. NO. _____ ILLINOIS FED. AID PROJECT				

TRAFFIC CONTROL FOR ROAD CLOSURE

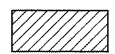




ROAD CLOSED TO THRU TRAFFIC BARRICADE SET UP



Type III Barricades and R11-4-4830 signs shall be as shown in "Road Closed To All Thru Traffic" detail on Highway Standard 701901. If the distance "D" exceeds 600 m (2000') an additional set of barricades and R11-4-4830 shall be placed at each end of the work area.

SYMBOLS

-  Work area
-  Type III Barricade with Flashers
-  Sign with flashing light

GENERAL NOTES

- Longitudinal dimensions may be adjusted to fit field conditions.
- When speed limit is less than 45mph, change sign spacing to 250' and change ROAD CLOSED 1000 FT to ROAD CLOSED 500 FT.
- Side roads requiring all three signs as shown in CONDITION I (Major Sideroad Closure), shall be listed in the special provision.

** Where local access is to be maintained, barricades are to be set up as shown in Road Closed to thru traffic. Type III Barricades and R11-2-4830 signs shall be as shown in "Road Closed To All Traffic" detail on Highway Standard 701901.

All dimensions are in millimeters (inches) unless otherwise shown.

TYPICAL APPLICATION FOR ROAD CLOSURE

PLOT DATE = Thu, Jan 31, 07:44:59, 2008
 FILE NAME = C:\P\c\p\eta\eta\211\986\dl1986.apl.dgn
 PLOT SCALE = 82.9412 / IN
 REFERENCE = REF#