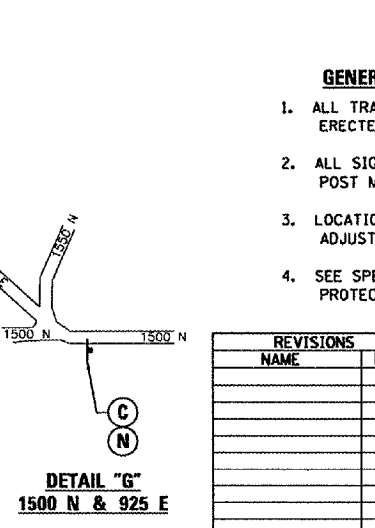
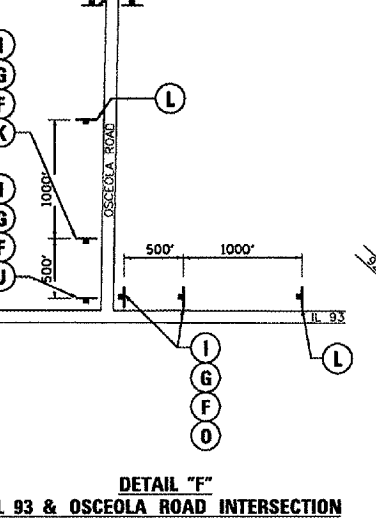
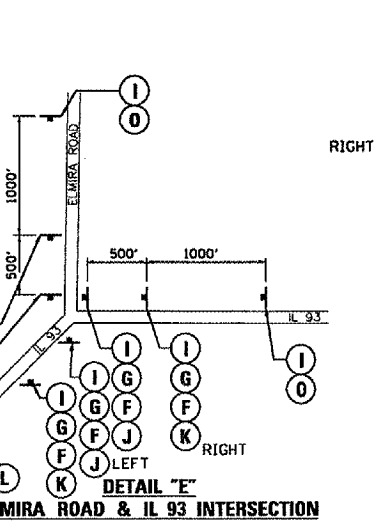
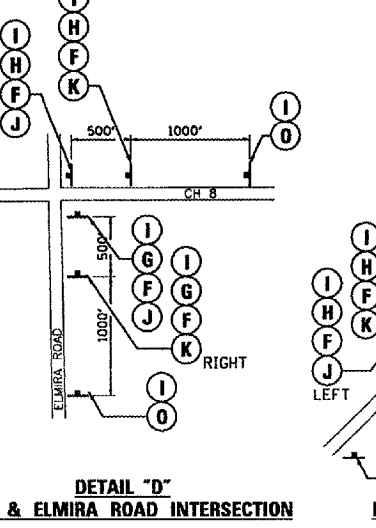
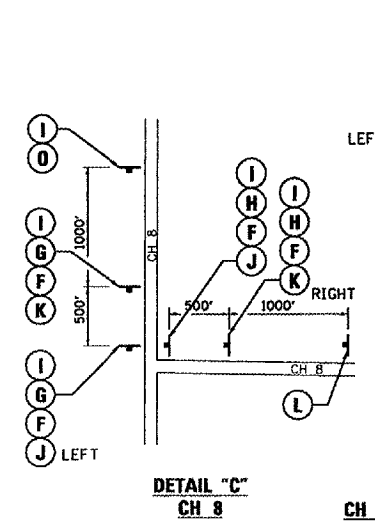
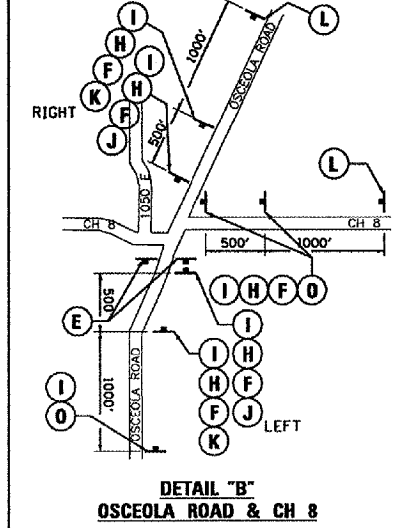
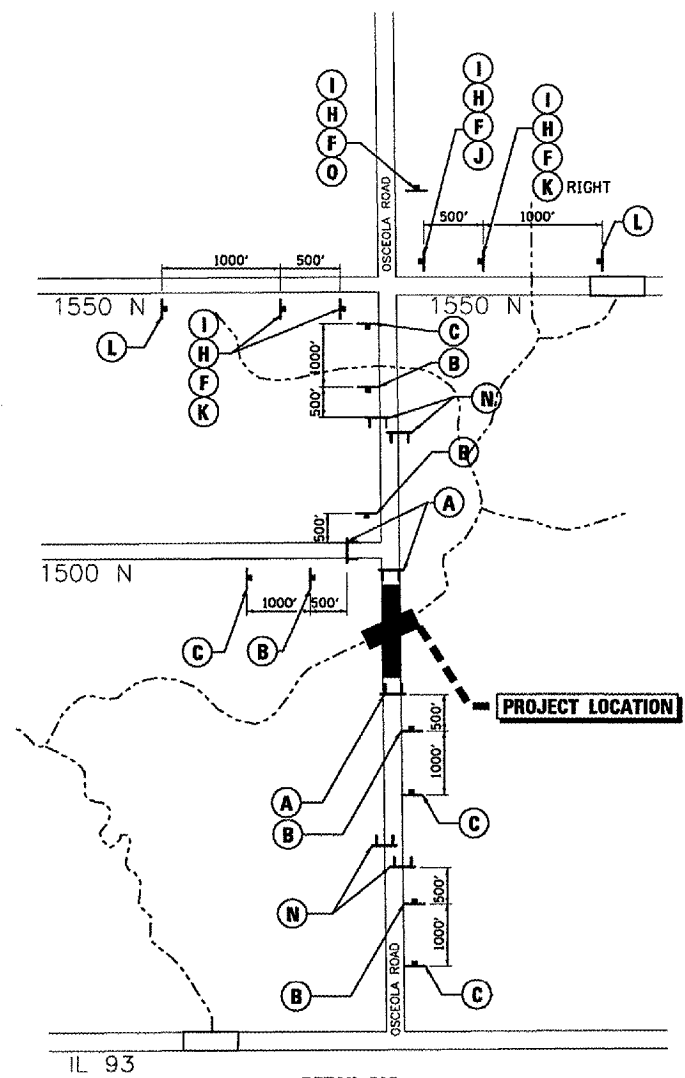
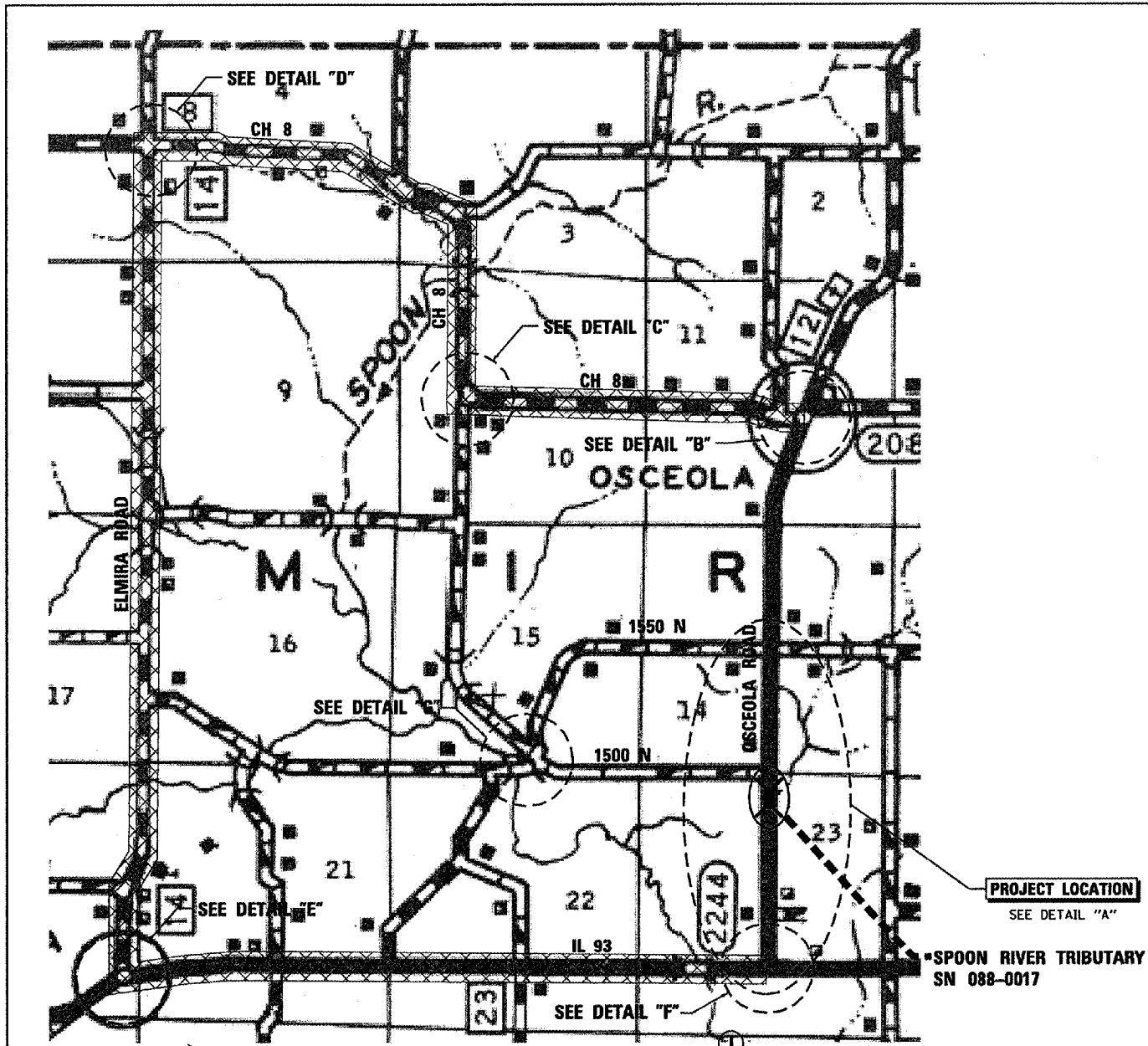


F.A. RTE.	SECTION	COUNTY	TOTAL SHEETS	SHEET NO.
2244	(107B)BR	STARK	39	7
STA.	TO STA.			
FED. ROAD DIST. NO.	ILLINOIS	FED. AID PROJECT		



R11-2-4830	W20-3-4848	W20-3-4848
R11-3-6030	R11-3-6030	
M3-1-2412	M3-3-2412	M4-8-2412
M6-1-2115	M5-1-2115	W20-2-4848
R11-4-4830	M6-3-2115	M4-8A-2418

- LEGEND**
- TYPE III BARRICADES CONFORMING TO STD. T02001 "ROAD CLOSED TO ALL TRAFFIC" WITH 2 FLASHING LIGHTS PER BARRICADE
 - TYPE III BARRICADES CONFORMING TO STD. T02001 "ROAD CLOSED TO THRU TRAFFIC" WITH 2 FLASHING LIGHTS PER BARRICADE
 - SIGNS ON PERMANENT SUPPORTS
 - FLASHING LIGHT ABOVE SIGN
 - 18"x18" ORANGE FLAG
 - DETOUR ROUTE

- GENERAL NOTES**
1. ALL TRAFFIC CONTROL DEVICES SHALL BE FURNISHED, ERECTED AND MAINTAINED BY THE CONTRACTOR.
 2. ALL SIGNS NOT ATTACHED TO BARRICADES SHALL BE POST MOUNTED, UNLESS OTHERWISE NOTED.
 3. LOCATIONS OF TRAFFIC CONTROL DEVICES MAY BE ADJUSTED BY THE ENGINEER.
 4. SEE SPECIAL PROVISIONS FOR TRAFFIC CONTROL AND PROTECTION FOR TEMPORARY DETOUR.

REVISIONS	
NAME	DATE

ILLINOIS DEPARTMENT OF TRANSPORTATION

FAS 2244, SEC (107B)BR

DETOUR PLAN

SCALE: VERT. DATE
HORIZ. CHECKED BY

DRAWN BY