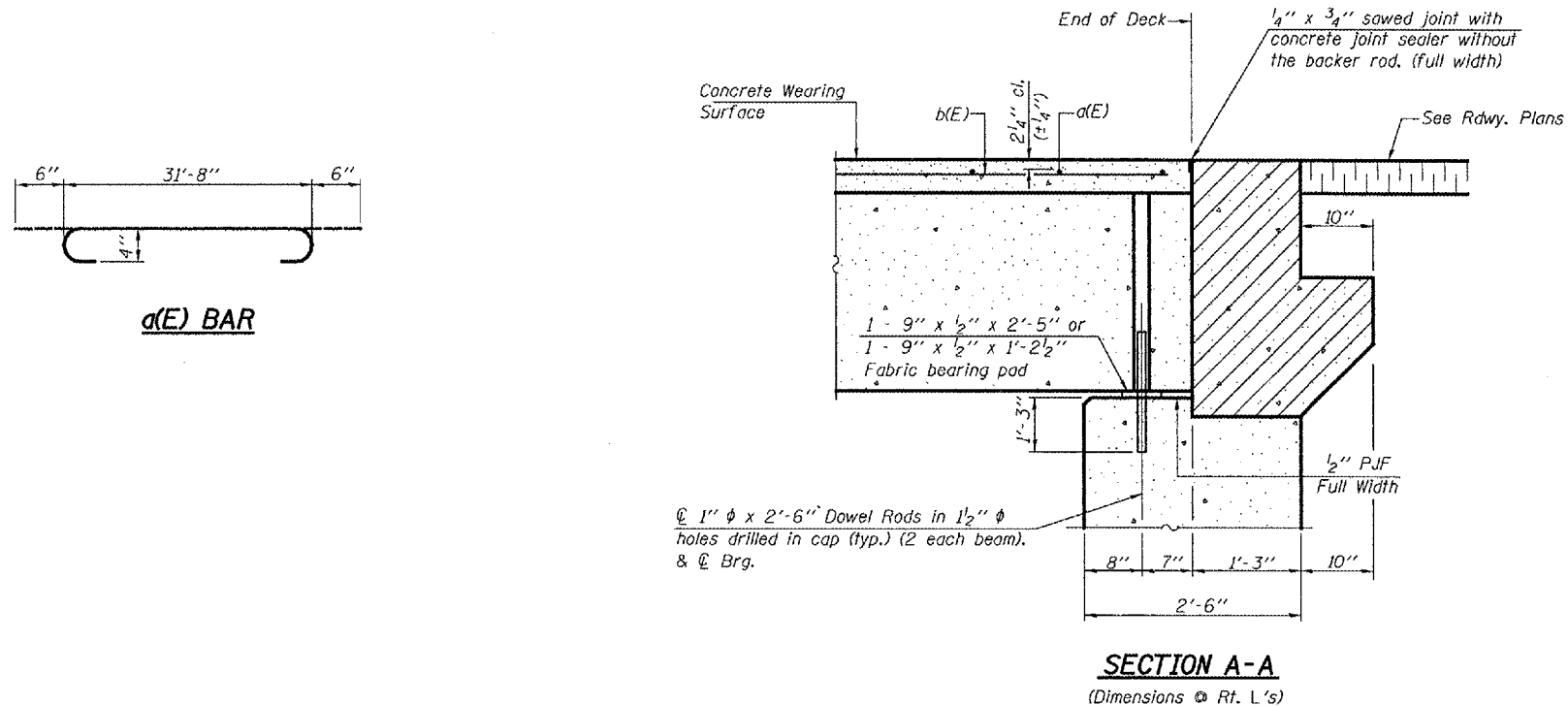
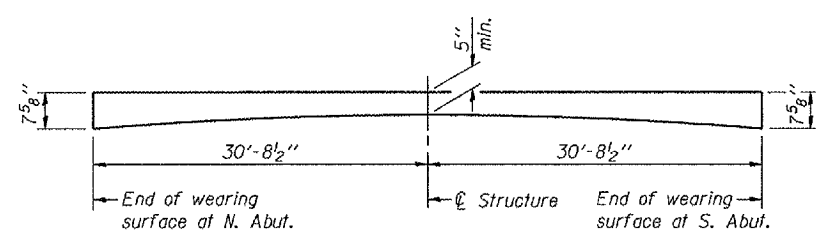


STATE OF ILLINOIS  
DEPARTMENT OF TRANSPORTATION

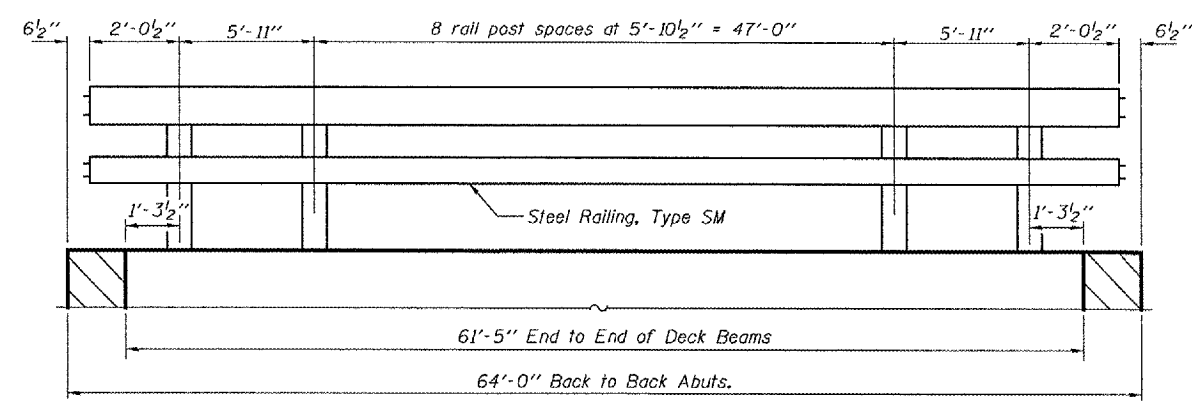
ROUTE NO.	SECTION	COUNTY	SHEET	SET	SHEET NO. 3
F.A.S. 2244	(107B) BR	STARK	39	16	10 SHEETS
FED. ROAD DIST. NO. 7	ILLINOIS	FED. AID PROJECT	Contract #68115		



Notes:  
After beams have been erected, holes shall be drilled into substructure and dowel rods placed. Dowel holes shall be filled with non-shrink grout to top of beam and allowed to cure min. 24 hours prior to grouting the shear keys.  
See sheet 4 of 10 for Fabric Bearing Pad details.  
Concrete Wearing Surface to be poured after grouting the shear keys.  
Dowel rods drilled in cap are included in the cost of Precast Prestressed Concrete Deck Beams (27" depth).  
Hatched areas to be poured after concrete wearing surface is in place. Quantity included with Concrete Structures on sheet 8 of 10.



**REINFORCED CONCRETE WEARING SURFACE PROFILE**



**\*RAIL POST SPACING**  
See sheet 5 of 9 for bridge rail details.

**SUPERSTRUCTURE  
BILL OF MATERIAL**

Bar	No.	Size	Length	Shape
a(E)	62	#4	32'-8"	
a1(E)	2	#4	32'-10"	—
b(E)	66	#4	31'-5"	—
Reinforcement Bars, Epoxy Coated			Pound	2780
Concrete Wearing Surface, 5"			Sq. Yd.	218.4

\*The anchor device for the first rail post adjacent to each abutment is located 1/2" higher off the top face of the deck beam than the anchor devices for all other rail posts. The Contractor shall take care that the anchor devices are placed as directed on the Steel Railing, Type SM sheet, sheet 5 of 10.

DESIGNED	Stephen M Ryan	EXAMINED	Thomas J. Demagala
CHECKED	Dan F. Zerrusen	PASSED	Ralph E. Anderson
DRAWN	R. Sommer	ENGINEER OF BRIDGES AND STRUCTURES	
CHECKED	SMR/DFZ/SEM	March 4, 2008	

**SUPERSTRUCTURE DETAILS**  
F.A.S. ROUTE 2244 - SECTION (107B)BR  
STARK COUNTY  
STATION 85+31.81  
STRUCTURE NO. 088-0029