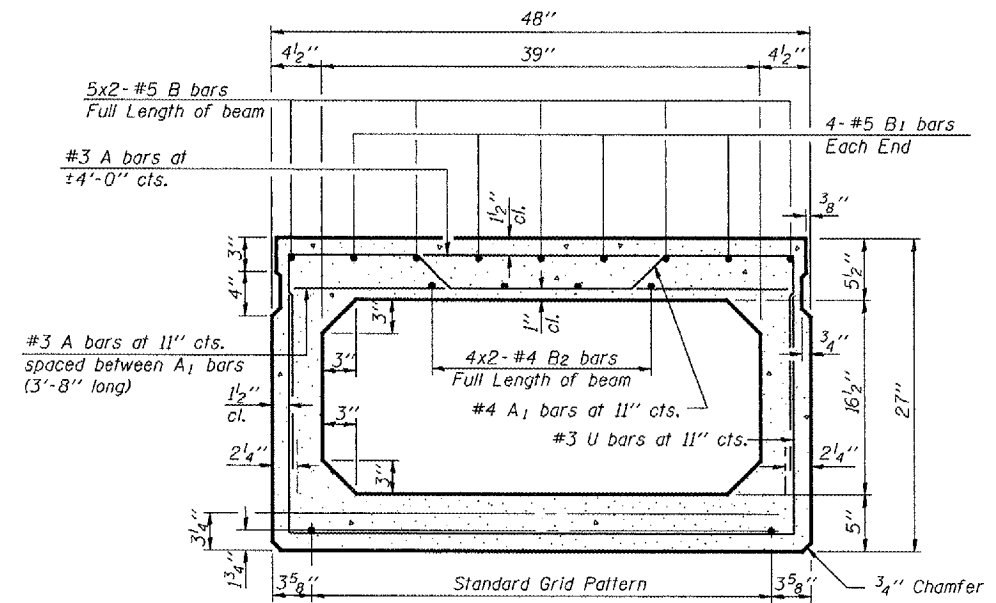
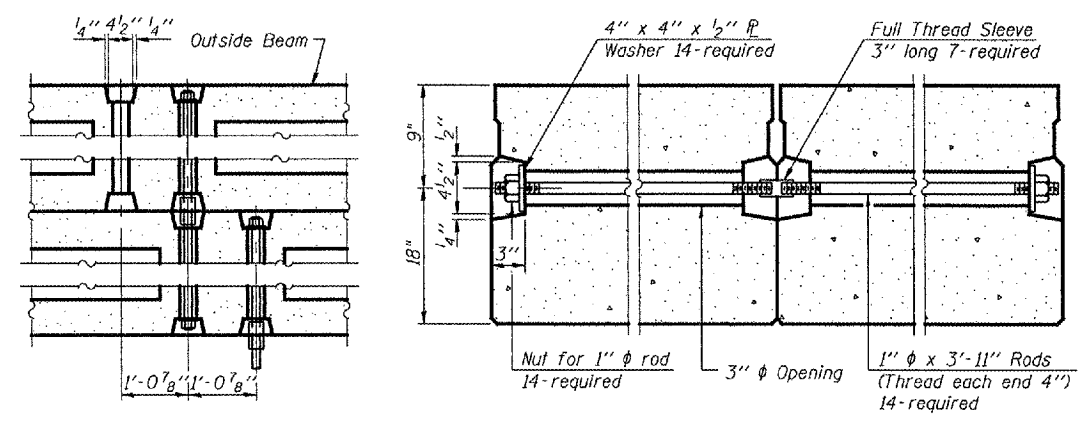
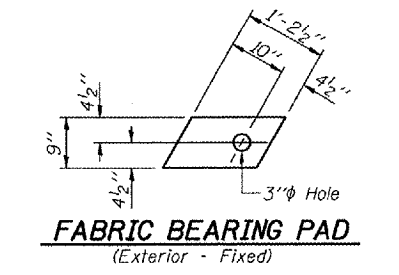
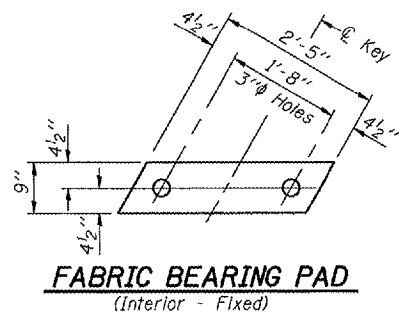


STATE OF ILLINOIS  
DEPARTMENT OF TRANSPORTATION

ROUTE NO.	SECTION	COUNTY	SHEET	SET	SHEET NO. 4 10 SHEETS
F.A.S. 2244	(107B) BR	STARK	39	17	
FED. ROAD DIST. NO. 7		ILLINOIS	FED. AID PROJECT		

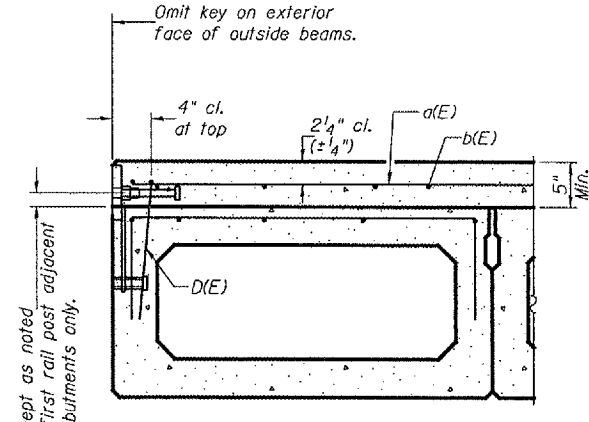
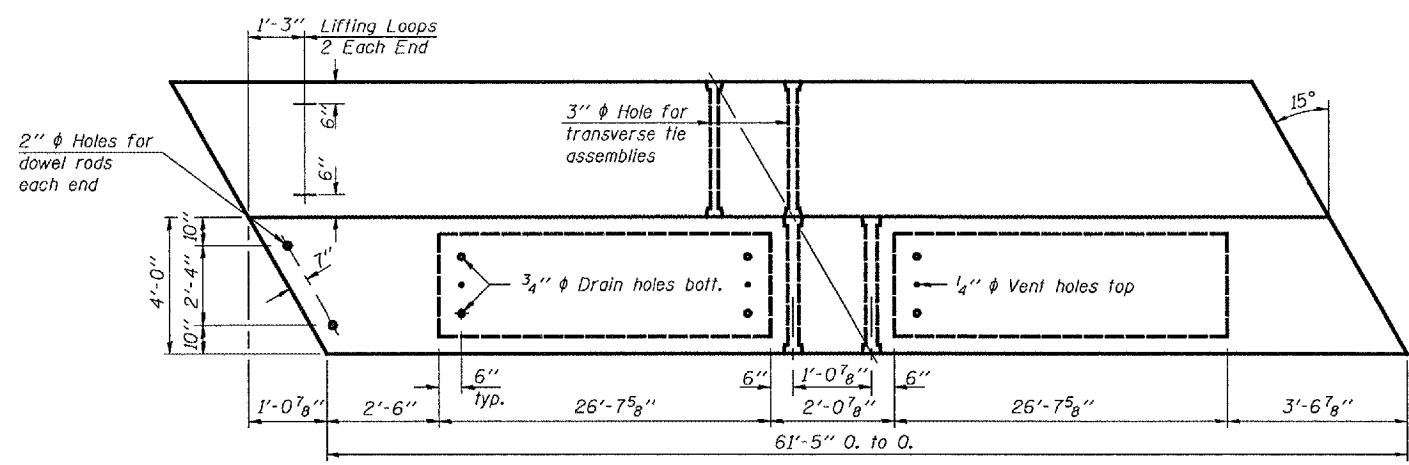
Contract #68115



**SECTION THRU INTERIOR BEAMS**

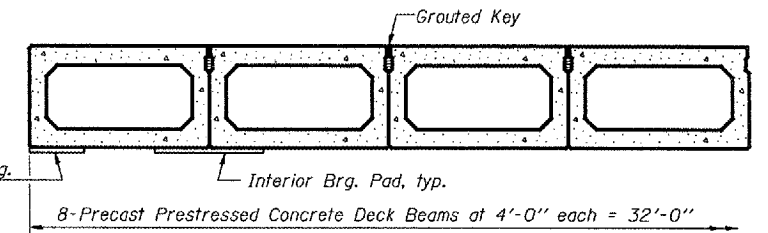
1/2" phi Strands, Each Strand Stressed to 30,900 Lbs.  
13-Strands 1 3/4" up, 4-Strands 3/4" up,  
2-Strands 6" up, 2-Strands 9" up.

Note:  
Place strands symmetrically  
about center of beam.



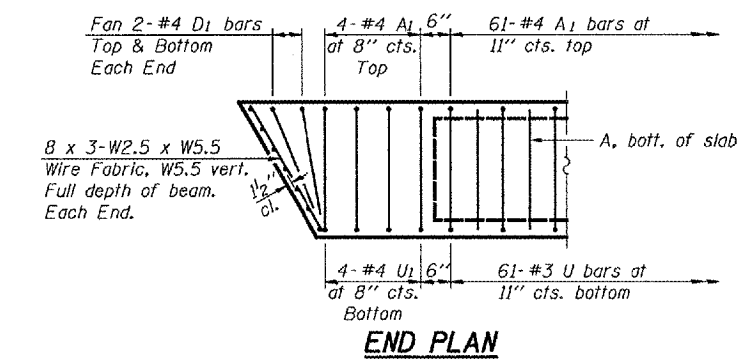
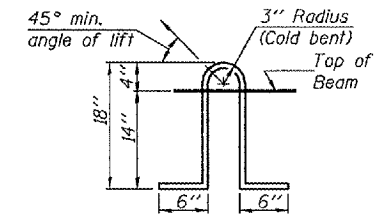
**SECTION THRU EXTERIOR BEAMS**

Rail anchorage shall be cast with the beam and the concrete wearing surface shall be cast in the field. See Section thru Interior Beams for dimensions, strand pattern, and bar callouts not shown. Formwork necessary for the concrete wearing surface may be secured utilizing the bottom rail anchorage inserts and/or additional inserts cast into the beam. Drilling into the beam will not be permitted.



**NOTES**

Prestressing steel shall be uncoated high strength, low relaxation 7-wire strand, Grade 270. The nominal diameter shall be 1/2" and the nominal cross-sectional area shall be 0.153 sq. in. Lifting loops shall be 3 - 1/2" phi - 270 ksi strands, as shown. The 1" phi rods in the transverse tie assembly shall be tightened to a snug fit and the threads set. Pockets that receive transverse tie bar on outside shall be filled with grout after transverse tie assembly is in place. Non prestressing steel shall conform to ASTM A 706 (IL MOD), Grade 60. The bearing seat surfaces shall be adjusted by shimming to assure firm and even bearing. Two 1/8" fabric adjusting shims of the dimensions of the Exterior Bearing Pad shall be provided for each bearing. Keyway surfaces shall be cleaned to remove form oil or other bond breaking material prior to shipment of the beams. Cleaning shall be done by sandblasting the keyway areas between top of the beam and the bottom edge of the key. Corrosion Inhibitor, per Article 1020.05(b)(12) of the Standard Specifications, shall be used in the concrete for precast prestressed concrete deck beams. Required Release Strength, f'ci, shall be 4,000 p.s.i. See sheet 6 of 10 for Rail Anchor details. See sheet 3 of 10 for Rail Post Spacing.



DESIGNED	Stephen M Ryan	EXAMINED	Thomas J. Demagallo
CHECKED	Don F Zerrusen	PASSED	Ronald E. Anderson
DRAWN	R. Sommer	ENGINEER OF BRIDGES AND STRUCTURES	
CHECKED	SMR/DFZ/SEM		

March 4, 2008

**27" x 48" PPC DECK BEAM DETAILS**  
F.A.S. ROUTE 2244 - SECTION (107B)BR  
STARK COUNTY  
STATION 85+31.81  
STRUCTURE NO. 088-0029