

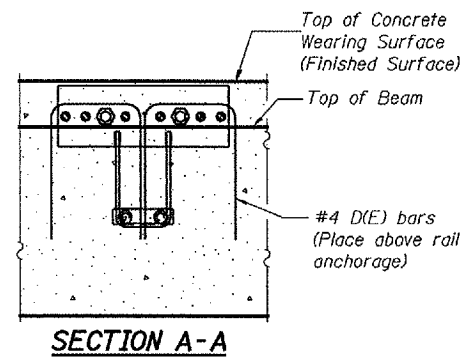
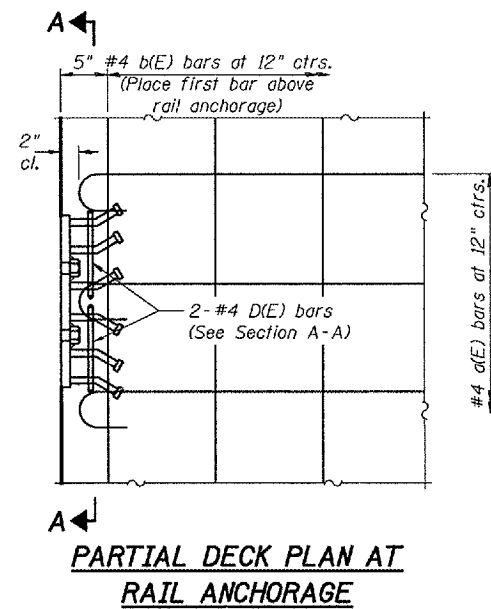
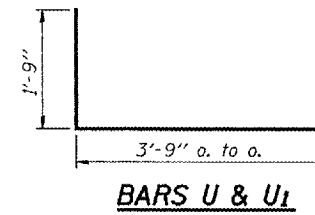
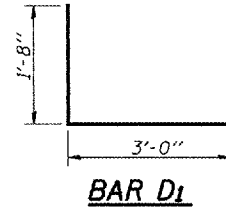
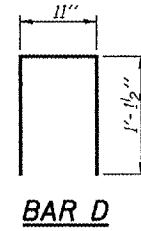
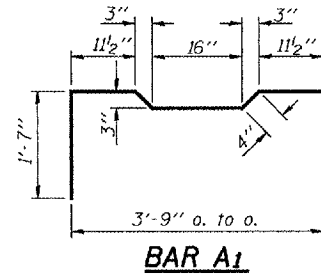
STATE OF ILLINOIS
DEPARTMENT OF TRANSPORTATION

ROUTE NO.	SECTION	COUNTY	SHEET NO.	SHEET NO.
F.A.S. 2244	(107B) BR	STARK	34	18
FED. ROAD DIST. NO. 7		ILL. PROJECT	FED. AID PROJECT	
Contract #68115				

10 SHEETS

MIN. BAR LAPS

#4 bars = 2'-5"
#5 bars = 3'-0"



BAR LIST
ONE BEAM ONLY

(For Information Only)

Bar	No.	Size	Length	Shape
A	85	#3	3'-8"	—
A1	69	#4	7'-2"	⌊
B	10	#5	32'-1"	—
B1	8	#5	12'-4"	—
B2	8	#4	31'-10"	—
D	22	#4	3'-2"	⌊
D1	8	#4	4'-8"	⌊
U	61	#3	7'-3"	⌊
U1	8	#4	7'-3"	⌊

*Exterior beams only

BILL OF MATERIAL

Precast Prestressed Conc. Deck Bms. (27" Depth)	Sq. Ft.	1965
---	---------	------

DESIGNED	Stephen M Ryan
CHECKED	Dan F Zerrusen
DRAWN	R. Sommer
CHECKED	SMR/DFZ/SEM

EXAMINED	Thomas J. Domagala	March 4, 2008
PASSED	Ralph E. Anderson	

27" x 48" PPC DECK BEAM DETAILS
F.A.S. ROUTE 2244 - SECTION (107B)BR
STARK COUNTY
STATION 85+31.81
STRUCTURE NO. 088-0029