

F.A.P. RTE.	SECTION	COUNTY	TOTAL SHEETS	SHEET NO.
781	1081	CRAWFORD	15	1
FED. ROAD DIST. NO.		ILLINOIS	CONTRACT NO. 74292	

**STATE OF ILLINOIS
DEPARTMENT OF TRANSPORTATION
DIVISION OF HIGHWAYS**

**PROPOSED
HIGHWAY PLANS**

**FAP ROUTE 781 (IL RTE. 33)
SECTION 1081
CRAWFORD COUNTY
C-97-038-08**

INDEX OF SHEETS

SHEET NO.	TITLE
1	COVER SHEET, INDEX OF SHEETS AND LIST OF STANDARDS
2	GENERAL NOTES
3	SUMMARY OF QUANTITIES
4	SCHEDULE OF QUANTITIES & DITCH TYPICAL SECTION
5-6	PLAN & PROFILE SHEET
7	EROSION CONTROL DETAILS
8-15	CROSS-SECTION SHEETS

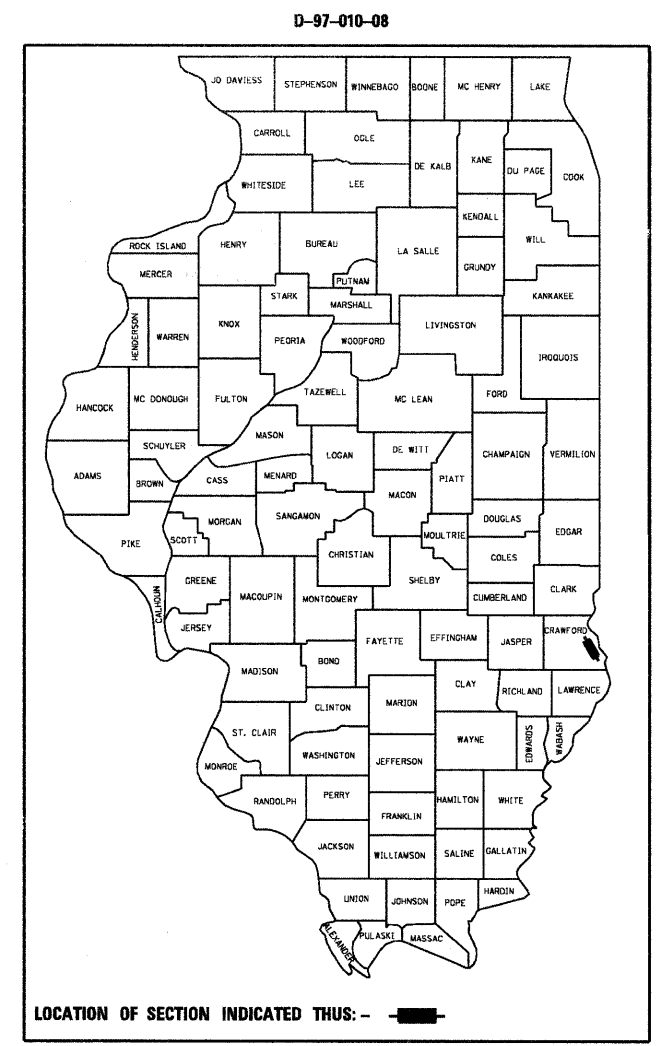
THE FOLLOWING STANDARDS ARE PART OF THESE PLANS AND ARE INCLUDED FOLLOWING SHEET NUMBER 15:

000001-05	STANDARD SYMBOLS, ABBREVIATIONS AND PATTERNS
280001-04	TEMPORARY EROSION CONTROL SYSTEM
701001-01	OFF-ROAD OPERATIONS, 2L, 2W MORE THAN 15' AWAY
701006-02	OFF-ROAD OPERATIONS, 2L, 2W, 15' TO 24" FROM PAVEMENT EDGE
701201-02	LANE CLOSURE, 2L, 2W DAY ONLY, FOR SPEEDS > 45 MPH
701311-02	LANE CLOSURE 2L, 2W MOVING OPERATIONS - DAY ONLY
701901	TRAFFIC CONTROL DEVICES

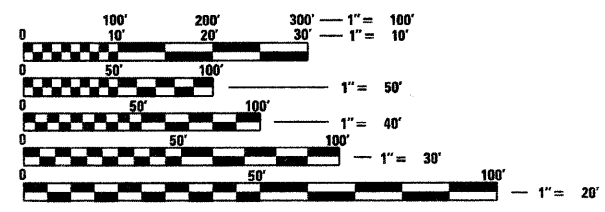
STATION EQUATION

STA. 27+82.6 TO STA. 28+36.9

FAP ROUTE 781 (L. RTE. 33)
SECTION 1081
DITCH CLEANING
CRAWFORD COUNTY
STA. 27+75 TO STA. 35+00

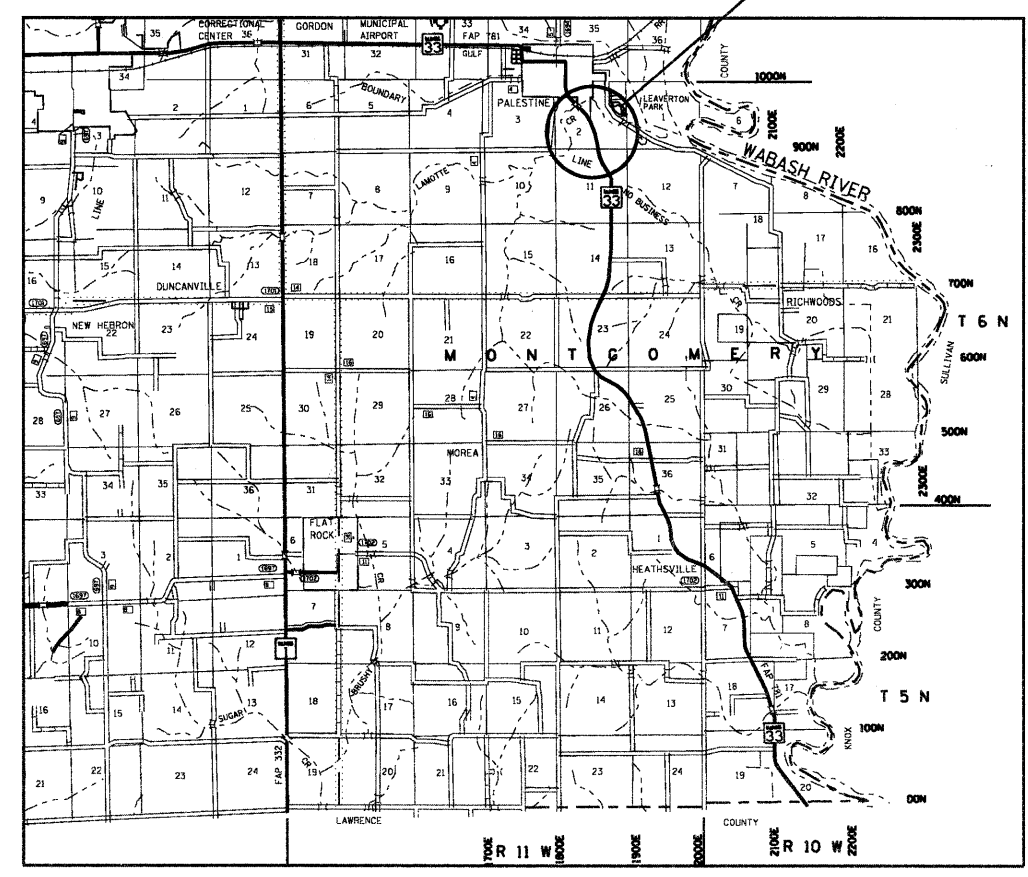


ADT 2005 = 2000



FULL SIZE PLANS HAVE BEEN PREPARED USING STANDARD ENGINEERING SCALES. REDUCED SIZED PLANS WILL NOT CONFORM TO STANDARD SCALES. IN MAKING MEASUREMENTS ON REDUCED PLANS, THE ABOVE SCALES MAY BE USED.

J.U.L.I.E.
JOINT UTILITY LOCATION INFORMATION FOR EXCAVATION
1-800-892-0123
OR 811



GROSS LENGTH = 725 FEET = 0.13 MILES
NET LENGTH = 725 FEET = 0.13 MILES

**PROJECT ENGINEER GARY WELTON
PROJECT MANAGER MYRA OLTMAN**

CONTRACT NO. 74292

STATE OF ILLINOIS
DEPARTMENT OF TRANSPORTATION
DIVISION OF HIGHWAYS

SUBMITTED *February 6* 20 *08*

Christine M. Reed
DEPUTY DIRECTOR OF HIGHWAYS, REGION ENGINEER

March 21, 20 08

Eric E. Hamm
ENGINEER OF DESIGN AND ENVIRONMENT

March 21, 20 08

Christine M. Reed
DIRECTOR OF HIGHWAYS, CHIEF ENGINEER

**PRINTED BY THE AUTHORITY
OF THE STATE OF ILLINOIS**