

FAP ROUTE	SECTION	COUNTY	TOTAL SHEETS	SHEET NO.
592	121-1R, 121HVB	ST. CLAIR	239	1
FED. ROAD DIST. NO.		ILLINOIS	FED. AID PROJECT BR 592 ( )	

★ 239 of 240

STATE OF ILLINOIS  
DEPARTMENT OF TRANSPORTATION  
DIVISION OF HIGHWAYS

**PLANS FOR PROPOSED  
FEDERAL AID HIGHWAY**

**FAP ROUTE 592 (IL ROUTE 157)**

**SECTION 121-1R, 121HVB**

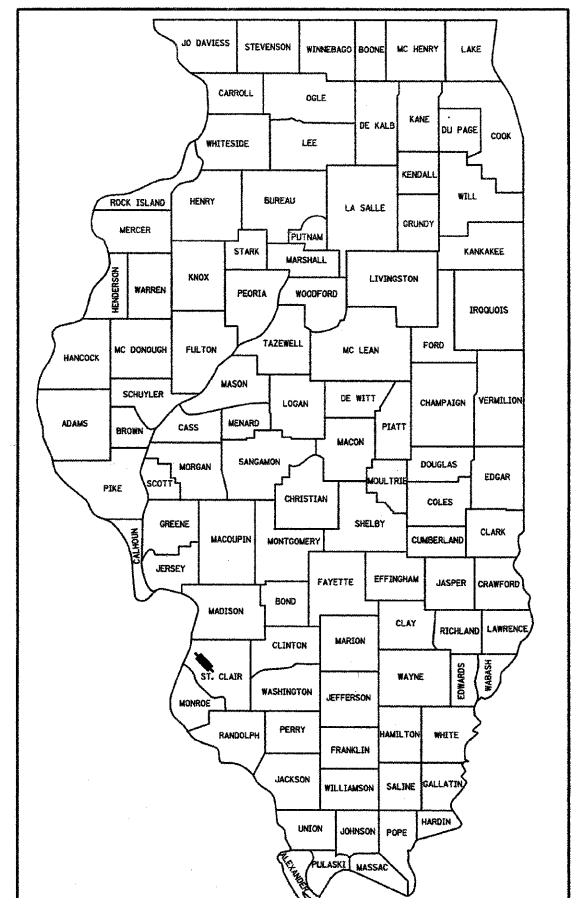
**PROJECT: AGF-0592 (050)**

**ST. CLAIR COUNTY**

**RELOCATION & GRADE SEPARATION**

C-98-024-03

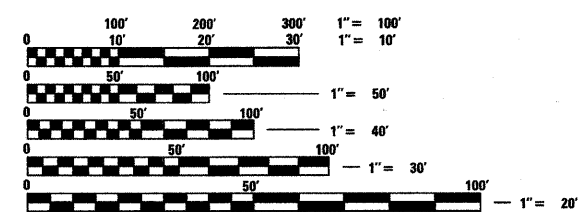
D-98-104-99



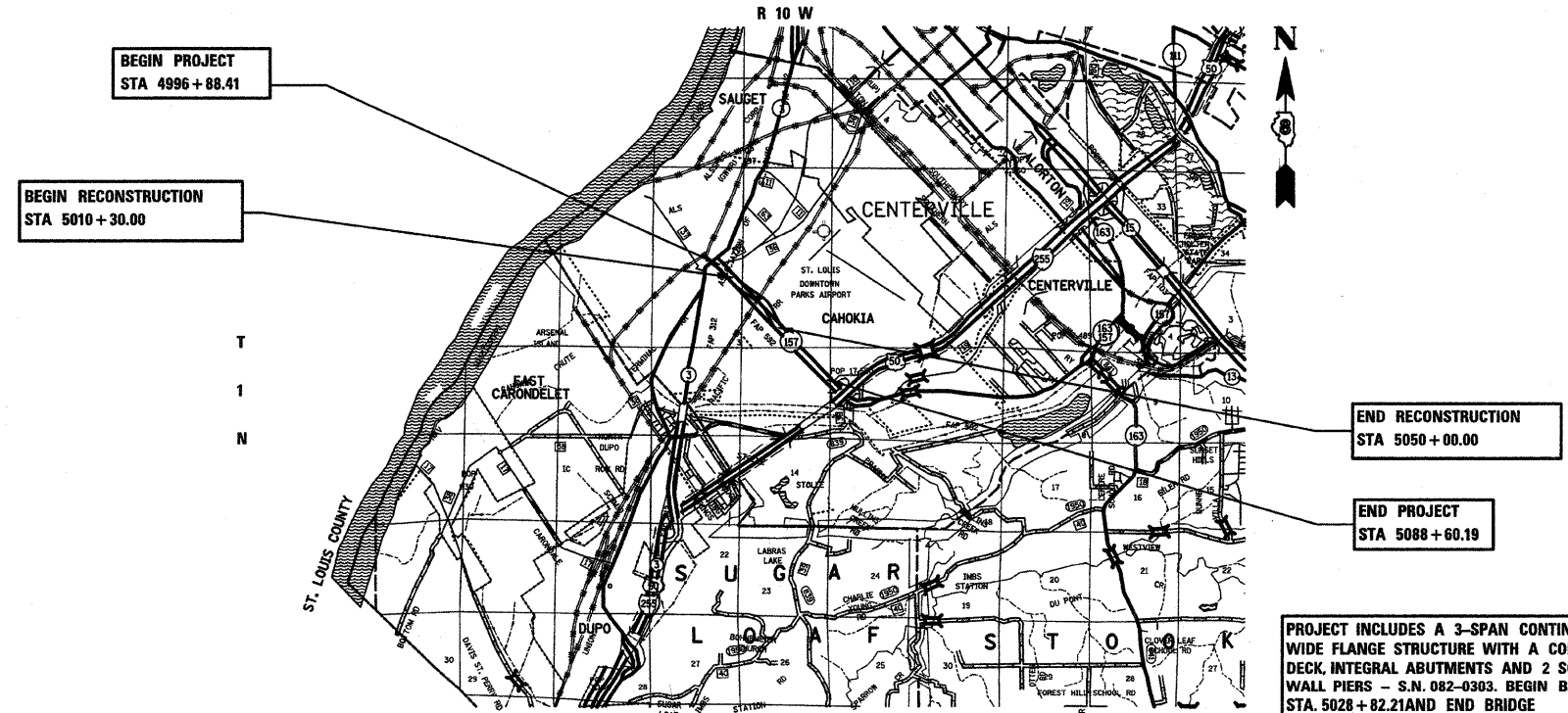
LOCATION OF SECTION INDICATED THUS: -

**INDEX OF SHEETS**

SHEET NO.	ITEM
1	COVER SHEET
2 - 3	HIGHWAY STANDARDS & GENERAL NOTES
4 - 10	SUMMARY OF QUANTITIES
11 - 23	TYPICAL SECTIONS
24 - 25	ENTRANCE DETAILS
26 - 40	SCHEDULE OF QUANTITIES
41 - 45	HORIZONTAL ALIGNMENT AND SURVEY TIES
46 - 57	SUGGESTED STAGES OF CONSTRUCTION & TRAFFIC CONTROL
58 - 70	PLAN & PROFILE SHEETS
71 - 79	DRAINAGE PLAN & PROFILE SHEETS
80 - 81	GRADING PLAN
82 - 86	REMOVAL PLANS
87 - 110	PLAT OF HIGHWAY SHEETS
111 - 115	INTERSECTION DETAIL SHEETS
116 - 121	PAVEMENT MARKING PLANS
122 - 126	STORM WATER POLLUTION PREVENTION PLANS
127 - 136	TRAFFIC SIGNALS
137 - 159	BRIDGE PLANS
160	PLANTING DETAIL
160A	SETTLEMENT PLATE DETAILS
161 - 162	MISCELLANEOUS DETAILS
163 - 170	CULVERT PROFILES
171 - 173	GRADING PLAN SECTIONS
174 - 239	CROSS SECTIONS



FULL SIZE PLANS HAVE BEEN PREPARED USING STANDARD ENGINEERING SCALES, REDUCED SIZED PLANS WILL NOT CONFORM TO STANDARD SCALES, IN MAKING MEASUREMENTS ON REDUCED PLANS, THE ABOVE SCALES MAY BE USED.



BEGIN PROJECT  
STA 4996 + 88.41

BEGIN RECONSTRUCTION  
STA 5010 + 30.00

END RECONSTRUCTION  
STA 5050 + 00.00

END PROJECT  
STA 5088 + 60.19

**DESIGN DESIGNATION**

F.A.P. 592 (IL RTE. 157)	OTHER PRINCIPAL ARTERIAL ADT 23800 (2024)
ST. PAUL DRIVE	DESIGN SPEED = 45 MPH LOCAL COLLECTOR ADT 5600 (2024)
F.A.U. 9188 (RANGE LANE)	DESIGN SPEED = 25 MPH COLLECTOR ADT 7600 (2024)
	DESIGN SPEED 30 MPH

J.U.L.I.E.  
JOINT UTILITY LOCATION INFORMATION FOR EXCAVATION  
1-800-892-0123

**LAYOUT**

GROSS LENGTH = 1.737 MILES
NET LENGTH OF RECONSTRUCTION = 0.752 MILES
NET LENGTH OF RESURFACING = 0.985 MILES
NET LENGTH OF CONNECTOR RD CONSTRUCTION = 0.159 MILES
NET LENGTH OF DONALD ST. RECONSTRUCTION = 0.710 MILES
NET LENGTH OF FRONTAGE RD. CONSTRUCTION = 0.281 MILES
NET LENGTH OF RANGE LANE RECONSTRUCTION = 0.190 MILES
NET LENGTH OF ST. PAUL DR. RECONSTRUCTION = 0.060 MILES

PROJECT INCLUDES A 3-SPAN CONTINUOUS WIDE FLANGE STRUCTURE WITH A COMPOSITE DECK, INTEGRAL ABUTMENTS AND 2 SOLID WALL PIERS - S.N. 082-0303. BEGIN BRIDGE STA. 5028 + 82.21 AND END BRIDGE STA. 5030 + 47.48. WEST SPAN 47'-9 1/8", CENTER SPAN 69'-9", AND EAST SPAN 47'-9 1/8".



JEFFREY R. RENSING  
1/30/2008  
DATE

STATE OF ILLINOIS  
DEPARTMENT OF TRANSPORTATION  
DIVISION OF HIGHWAYS

SUBMITTED 1-31-08 20

*W. J. Adams*  
DEPUTY DIRECTOR OF HIGHWAYS

March 21, 20 08  
*Eric E. Haral*  
REGION FIVE ENGINEER

*Interim*  
ENGINEER OF DESIGN AND ENVIRONMENT

March 21, 20 08  
*Christine M. Reed*  
DIRECTOR, DIVISION OF HIGHWAYS



PROJECT ENGINEER: MIKE PRITCHETT (618) 346-3180  
SQUAD LEADER: JOHN UEHLE (618) 346-3141

PLOT DATE = 1/31/2008  
FILE NAME = H:\P\2105\Microstat\Design\p1n002a.dgn  
PLOT SCALE = 50.0000 / 1 IN.  
USER NAME = MUSER\*