

FAP ROUTE	SECTION	COUNTY	TOTAL SHEETS	SHEET NO
592	121-1R, 121HVB	ST. CLAIR	239	41
STA. 4994+75		TO STA. 5028+00		
PROPOSED ALIGNMENT				

GROUND COORDINATES

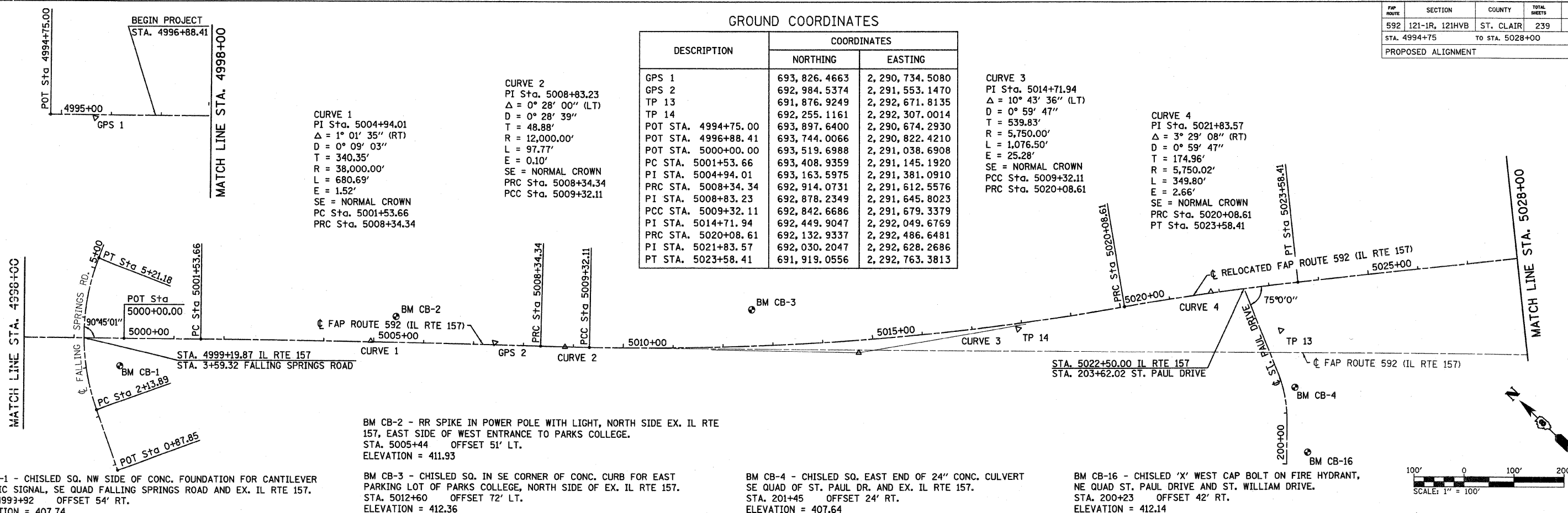
DESCRIPTION	COORDINATES	
	NORTHING	EASTING
GPS 1	693, 826. 4663	2, 290, 734. 5080
GPS 2	692, 984. 5374	2, 291, 553. 1470
TP 13	691, 876. 9249	2, 292, 671. 8135
TP 14	692, 255. 1161	2, 292, 307. 0014
POT STA. 4994+75.00	693, 897. 6400	2, 290, 674. 2930
POT STA. 4996+88.41	693, 744. 0066	2, 290, 822. 4210
POT STA. 5000+00.00	693, 519. 6988	2, 291, 038. 6908
PC STA. 5001+53.66	693, 408. 9359	2, 291, 145. 1920
PI STA. 5004+94.01	693, 163. 5975	2, 291, 381. 0910
PRC STA. 5008+34.34	692, 914. 0731	2, 291, 612. 5576
PI STA. 5008+83.23	692, 878. 2349	2, 291, 645. 8023
PCC STA. 5009+32.11	692, 842. 6686	2, 291, 679. 3379
PI STA. 5014+71.94	692, 449. 9047	2, 292, 049. 6769
PRC STA. 5020+08.61	692, 132. 9337	2, 292, 486. 6481
PI STA. 5021+83.57	692, 030. 2047	2, 292, 628. 2686
PT STA. 5023+58.41	691, 919. 0556	2, 292, 763. 3813

CURVE 2
 PI Sta. 5008+83.23
 $\Delta = 0^\circ 28' 00''$ (LT)
 $D = 0^\circ 28' 39''$
 $T = 48.88'$
 $R = 12,000.00'$
 $L = 97.77'$
 $E = 0.10'$
 SE = NORMAL CROWN
 PRC Sta. 5008+34.34
 PCC Sta. 5009+32.11

CURVE 3
 PI Sta. 5014+71.94
 $\Delta = 10^\circ 43' 36''$ (LT)
 $D = 0^\circ 59' 47''$
 $T = 539.83'$
 $R = 5,750.00'$
 $L = 1,076.50'$
 $E = 25.28'$
 SE = NORMAL CROWN
 PCC Sta. 5009+32.11
 PRC Sta. 5020+08.61

CURVE 4
 PI Sta. 5021+83.57
 $\Delta = 3^\circ 29' 08''$ (RT)
 $D = 0^\circ 59' 47''$
 $T = 174.96'$
 $R = 5,750.02'$
 $L = 349.80'$
 $E = 2.66'$
 SE = NORMAL CROWN
 PRC Sta. 5020+08.61
 PT Sta. 5023+58.41

CURVE 1
 PI Sta. 5004+94.01
 $\Delta = 1^\circ 01' 35''$ (RT)
 $D = 0^\circ 09' 03''$
 $T = 340.35'$
 $R = 38,000.00'$
 $L = 680.69'$
 $E = 1.52'$
 SE = NORMAL CROWN
 PC Sta. 5001+53.66
 PRC Sta. 5008+34.34



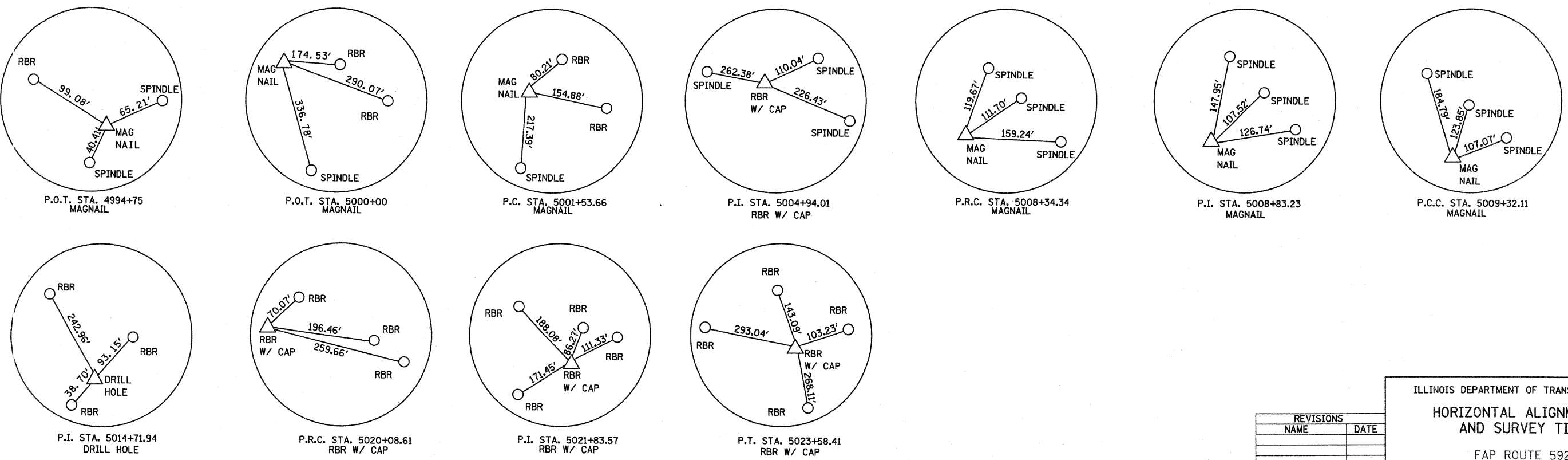
BM CB-1 - CHISLED SQ. NW SIDE OF CONC. FOUNDATION FOR CANTILEVER TRAFFIC SIGNAL, SE QUAD FALLING SPRINGS ROAD AND EX. IL RTE 157. STA. 4993+92 OFFSET 54' RT. ELEVATION = 407.74

BM CB-2 - RR SPIKE IN POWER POLE WITH LIGHT, NORTH SIDE EX. IL RTE 157, EAST SIDE OF WEST ENTRANCE TO PARKS COLLEGE. STA. 5005+44 OFFSET 51' LT. ELEVATION = 411.93

BM CB-3 - CHISLED SQ. IN SE CORNER OF CONC. CURB FOR EAST PARKING LOT OF PARKS COLLEGE, NORTH SIDE OF EX. IL RTE 157. STA. 5012+60 OFFSET 72' LT. ELEVATION = 412.36

BM CB-4 - CHISLED SQ. EAST END OF 24" CONC. CULVERT SE QUAD OF ST. PAUL DR. AND EX. IL RTE 157. STA. 201+45 OFFSET 24' RT. ELEVATION = 407.64

BM CB-16 - CHISLED 'X' WEST CAP BOLT ON FIRE HYDRANT, NE QUAD ST. PAUL DRIVE AND ST. WILLIAM DRIVE. STA. 200+23 OFFSET 42' RT. ELEVATION = 412.14



REVISIONS	
NAME	DATE

ILLINOIS DEPARTMENT OF TRANSPORTATION

HORIZONTAL ALIGNMENT AND SURVEY TIES

FAP ROUTE 592
 SECTION 121-1R, 121HVB
 COUNTY ST. CLAIR

DRAWN BY:

PLAN	SURVEYED	DATE
	PLOTTED	
	CHECKED	
	RT. OF WAY CHECKED	
	CAAD FILE NAME	
	NO.	

PLOT DATE = 1/30/2008
 FILE NAME = H:\P\21015\Microstat\Design\align\01.dgn
 PLOT SCALE = 60.0000 / 1 IN.
 USER NAME = RUSENB