

F.A.P. RTE.	SECTION	COUNTY	TOTAL SHEETS	SHEET NO.
592	121-1R, 121HVB	ST. CLAIR	239	81
FED. ROAD DIST. NO.		ILLINOIS	FED. AID PROJECT	
GRADING PLAN - COMPENSATORY STORAGE				

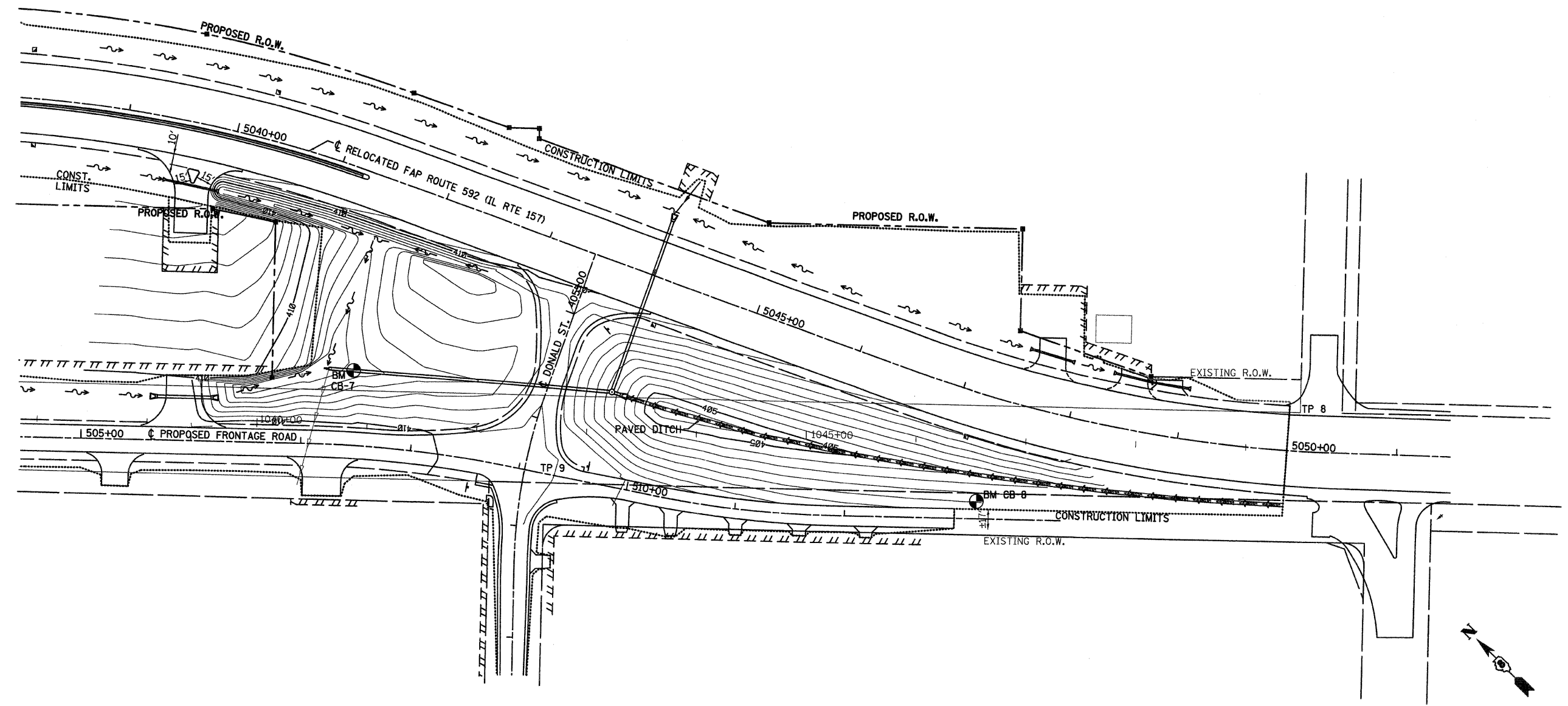
PLAN

SURVEYED	BY	DATE
ALIGNED		
CHECKED		
NO. OF WAYS CHECKED		
ROAD FILE NAME		
NO.		

PROFILE

SURVEYED	BY	DATE
GRADES CHECKED		
B.M. NOTED		
PRODUCTION NOTATIONS CHECKED		
NO.		

PLOT DATE = 03/22/2007
 FILE NAME = H:\V\21015\Microstation\Design\gr\pl\081.dgn
 PLOT SCALE = 50.0000 / IN.
 USER NAME = JUSERR



NOTE: CONTOURS ARE SHOWN IN 0.5 FEET INCREMENTS.

REVISIONS	
NAME	DATE

ILLINOIS DEPARTMENT OF TRANSPORTATION

GRADING PLAN

FAP ROUTE 592
 SECTION 121-1R, 121HVB
 ST. CLAIR COUNTY

DRAWN BY: