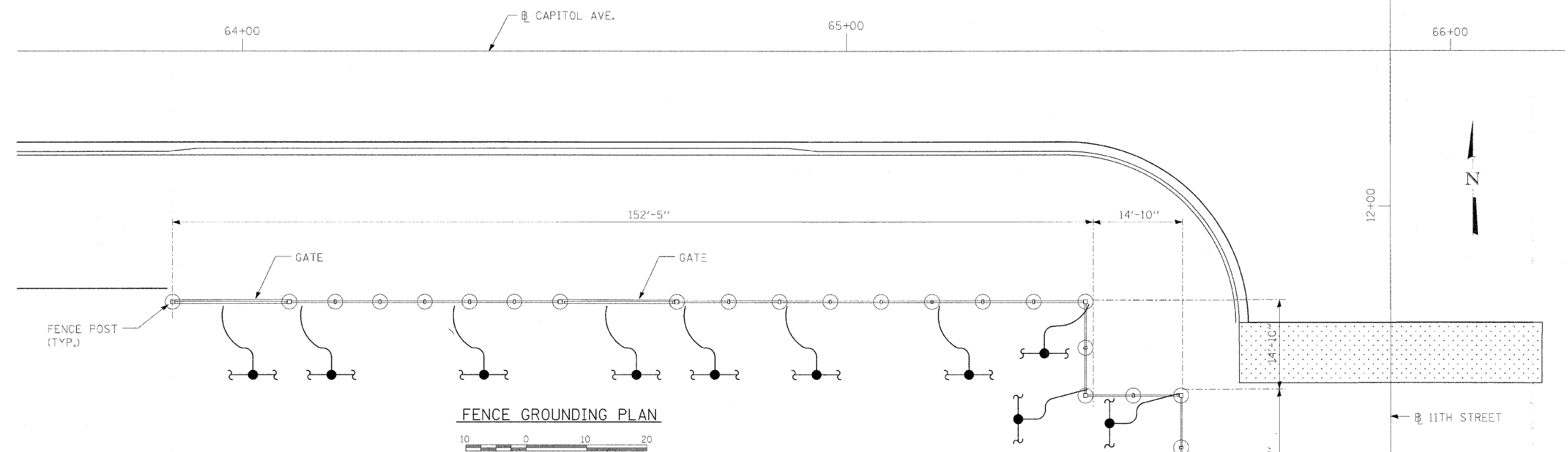


F.A.U. RTE.	SECTION	COUNTY	TOTAL SHEETS	SHEET NO.
7982		SANGAMON	114	95
STA. TO STA.		FED. AID PROJECT		
FED. ROAD DIST. NO.		ILLINOIS		
05-00447-01-PV		CITY OF SPRINGFIELD		



FENCE GROUNDING PLAN



NOTE: COST OF FENCE GROUNDING SHALL BE INCLUDED WITH COST FOR INSTALLATION OF VEGETATIVE SCREEN PANELS COORDINATE FENCE GROUNDING WITH CWLP

#2 AWG SOLID BARE TINNED COPPER CONDUCTOR, BOLT TO FENCE POST, (TYP.)

EXOTHERMIC WELD CONNECTION TO EXISTING SUBSTATION GROUND MAT (250 KCMIL CONDUCTOR)

SPLIT BOLT CONNECTION TO FENCE SCREEN, SPACED 3'-0" CTS. HARGER TYPE FGC.

#2 AWG SOLID BARE TINNED COPPER CONDUCTOR.

2-HOLE COMPRESSION LUG BOLTED CONNECTION TO FENCE POST. PROVIDE THRU-BOLTS FOR FENCE POSTS.

2-HOLE COMPRESSION LUG BOLTED CONNECTION TO FENCE POST & GATE. PROVIDE THRU-BOLTS FOR FENCE POST & GATE.

EXOTHERMIC WELD TO EXISTING GROUND MAT CONDUCTOR

NOTE: PROVIDE A CLEAN METAL-TO-METAL CONNECTION ON SCREEN AND POSTS.

FENCE BONDING DETAIL
NOT TO SCALE

NOTE: COST OF FENCE GROUNDING SHALL BE INCLUDED WITH COST FOR INSTALLATION OF VEGETATIVE SCREEN PANELS COORDINATE FENCE GROUNDING WITH CWLP

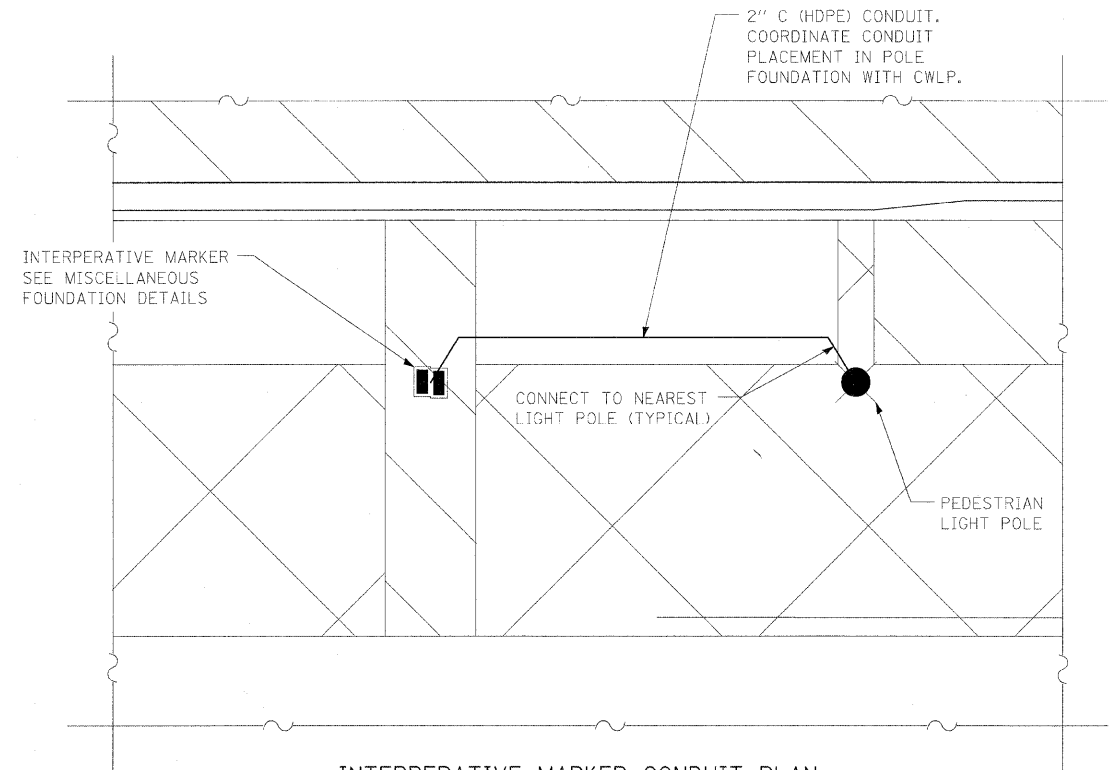
REVISIONS	
NAME	DATE

ILLINOIS DEPARTMENT OF TRANSPORTATION
ELECTRICAL DETAILS

FAU RTE 7982 CAPITOL AVE
SEC NO. 05-00447-01-PV
SANGAMON COUNTY, ILLINOIS

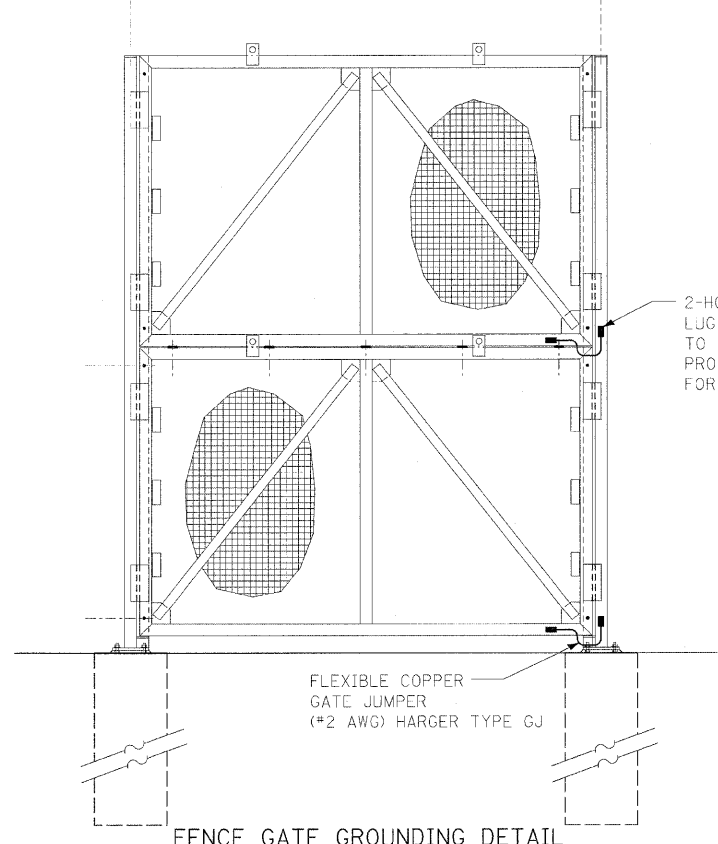
SCALE: VERT. HORIZ.
DATE 09/19/07

DRAWN BY DAP
CHECKED BY PJT



INTERPERATIVE MARKER CONDUIT PLAN
(TYPICAL FOR 18 LOCATIONS)
NOT TO SCALE

NOTE: COORDINATE WITH RICK MEADOWS AT CWLP (217-321-1354) FOR LIGHTING SYSTEM VOLTAGE AVAILABLE FOR INTERPERATIVE MARKER LIGHT FIXTURE. COST OF PVC CONDUIT SHALL BE INCLUDED WITH FOUNDATION.



FENCE GATE GROUNDING DETAIL
NOT TO SCALE



© Copyright Hanson Professional Services Inc. 2008

PLT DATE = 01/10/2008 10:24 AM
FILE NAME = I:\02_05_05_V2220110\Acad\Road\Interstation\sheet\section_117th_11th_V-815-ELECT_DET.dgn
DRAWN BY = PJT
REVIEWED BY = PJT
USER NAME = Pjpt080836