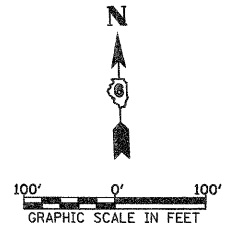
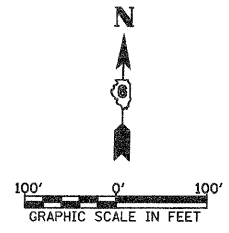
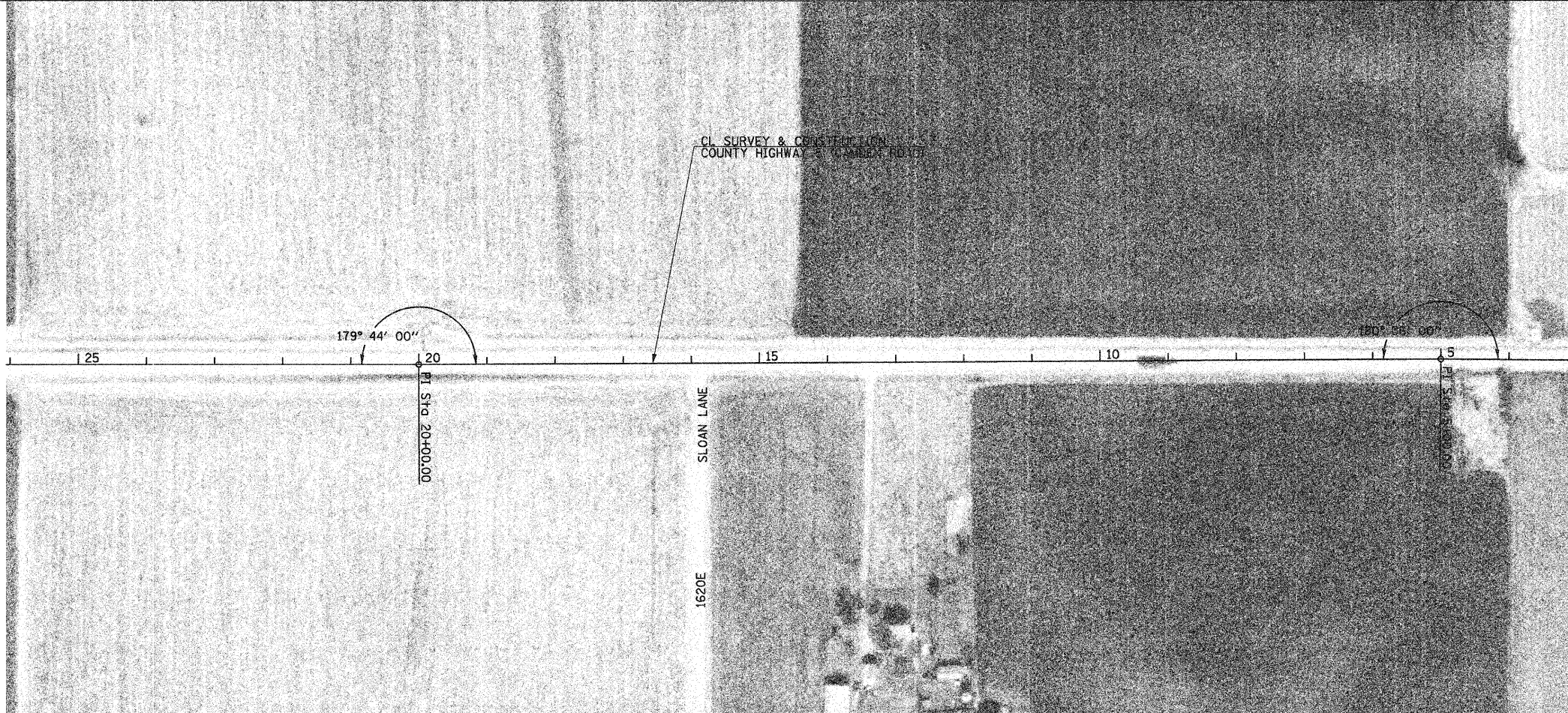


| F.A. RTE. | SECTION | COUNTY | TOTAL SHEETS | SHEET NO. |
|---------------------|----------------|------------------|--------------|-----------|
| | 06-00071-00-RS | SCHUYLER | 21 | 15 |
| STA. 26+00 | | TO STA. 1167+00 | | |
| FED. ROAD DIST. NO. | ILLINOIS | FED. AID PROJECT | | |



NOTE: SEE TYPICAL SECTIONS FOR HMA SHOULDERS TO BE CONSTRUCTED STA. 1161+75.00 TO STA. 1174+02.09

PLOT DATE = 2/1/2009
 FILE NAME = V:\2485\Fp9.dgn
 PLOT SCALE = 99.8185' / IN.
 USER NAME = bborngian

COUNTY HIGHWAY 5 (CAMDEN ROAD)/SBI 3 (OLD MACOMB ROAD), PROPOSED PLAN, STA 26+00 TO STA 1167+00