
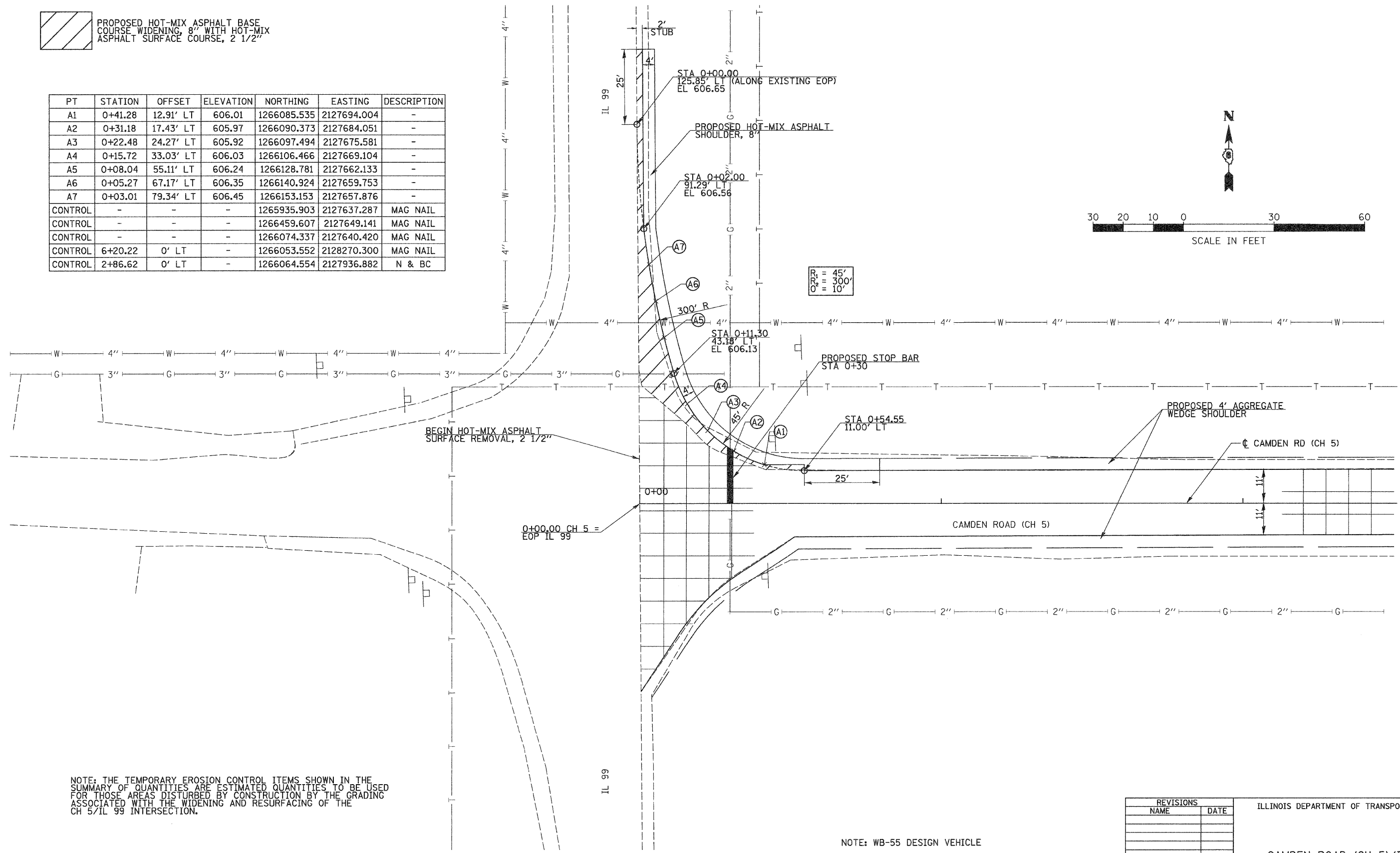
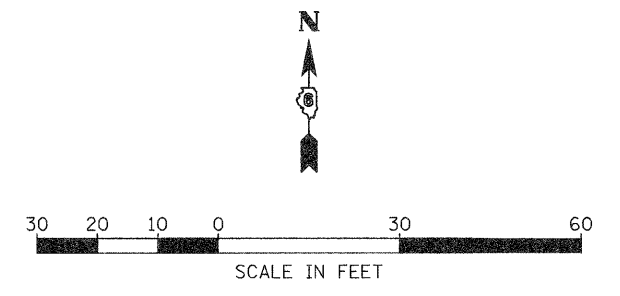


F.A.S. RTE.	SECTION	COUNTY	TOTAL SHEETS	SHEET NO.
583	06-00071-00-RS	SCHUYLER	21	18
FED. ROAD DIST. NO.	ILLINOIS	PROJECT NO.	SR-583(112)	

 PROPOSED HOT-MIX ASPHALT BASE COURSE WIDENING, 8" WITH HOT-MIX ASPHALT SURFACE COURSE, 2 1/2"

PT	STATION	OFFSET	ELEVATION	NORTHING	EASTING	DESCRIPTION
A1	0+41.28	12.91' LT	606.01	1266085.535	2127694.004	-
A2	0+31.18	17.43' LT	605.97	1266090.373	2127684.051	-
A3	0+22.48	24.27' LT	605.92	1266097.494	2127675.581	-
A4	0+15.72	33.03' LT	606.03	1266106.466	2127669.104	-
A5	0+08.04	55.11' LT	606.24	1266128.781	2127662.133	-
A6	0+05.27	67.17' LT	606.35	1266140.924	2127659.753	-
A7	0+03.01	79.34' LT	606.45	1266153.153	2127657.876	-
CONTROL	-	-	-	1265935.903	2127637.287	MAG NAIL
CONTROL	-	-	-	1266459.607	2127649.141	MAG NAIL
CONTROL	-	-	-	1266074.337	2127640.420	MAG NAIL
CONTROL	6+20.22	0' LT	-	1266053.552	2128270.300	MAG NAIL
CONTROL	2+86.62	0' LT	-	1266064.554	2127936.882	N & BC



NOTE: THE TEMPORARY EROSION CONTROL ITEMS SHOWN IN THE SUMMARY OF QUANTITIES ARE ESTIMATED QUANTITIES TO BE USED FOR THOSE AREAS DISTURBED BY CONSTRUCTION BY THE GRADING ASSOCIATED WITH THE WIDENING AND RESURFACING OF THE CH 5/IL 99 INTERSECTION.

NOTE: WB-55 DESIGN VEHICLE

REVISIONS	
NAME	DATE

ILLINOIS DEPARTMENT OF TRANSPORTATION

CAMDEN ROAD (CH 5)/IL 99 INTERSECTION DETAILS

DRAWN BY: BMB
CHECKED BY:

DATE: OCTOBER, 2007