

INDEX OF SHEETS

- 1 COVER SHEET
- 2 GENERAL NOTES, LEGEND, SUMMARY OF QUANTITIES
- 3-5 TYPICAL SECTIONS
- 6 SCHEDULES OF QUANTITIES
- 7-17 ROADWAY PLANS
- 18-20 INTERSECTION/PAVEMENT MARKING DETAILS
- 21 SPECIAL DETAILS

F.A.S. RTE.	SECTION	COUNTY	TOTAL SHEETS	SHEET NO.
583	06-00071-00-RS	SCHUYLER	21	1

CONTRACT NO. 93452

STATE OF ILLINOIS DEPARTMENT OF TRANSPORTATION DIVISION OF HIGHWAYS PLANS FOR PROPOSED SURFACE TRANSPORTATION/RURAL PROGRAM (W/TARP)

SCHUYLER COUNTY

FAS 583

SECTION 06-00071-00-RS CH 5 (CAMDEN ROAD) & SBI 3 (OLD MACOMB ROAD) PROJECT NO. SR-583(113) JOB NO. C-96-219-08

REQUIRED STANDARDS

- 000001-05 STANDARD SYMBOLS, ABBREVIATIONS, AND PATTERNS
- 280001-04 TEMPORARY EROSION CONTROL SYSTEMS
- 442201-03 CLASS C AND D PATCHES
- 701006-02 OFF-RD OPERATIONS 2L, 2W, 15' TO 24" FROM PAVEMENT EDGE
- 701011-01 OFF-RD MOVING OPERATIONS 2L, 2W DAY ONLY
- 701201-02 LANE CLOSURE, 2L, 2W, DAY ONLY, FOR SPEEDS ≥ 45 MPH
- 701306-01 LANE CLOSURE 2L, 2W SLOW MOVING OPERATIONS - DAY ONLY FOR SPEEDS ≥ 45MPH
- 701311-02 LANE CLOSURE 2L, 2W MOVING OPERATIONS - DAY ONLY ≥
- 701326-02 LANE CLOSURE 2L, 2W, PAVEMENT WIDENING, FOR SPEEDS 45 MPH
- 701901 TRAFFIC CONTROL DEVICES
- 780001-01 TYPICAL PAVEMENT MARKINGS
- BLR 24-1 MAILBOX TURNOUTS

DESCRIPTION OF WORK
THIS PROJECT CONSISTS OF HOT-MIX ASPHALT RESURFACING TO IMPROVE COUNTY HIGHWAY 5 AND SBI 3. THE ROADWAY WILL BE RESURFACED WITH 2 1/2" OF HMA MATERIAL. AGGREGATE WEDGE SHOULDERS WILL BE PROVIDED, ALONG WITH HMA SHOULDERS IN SELECT LOCATIONS. ALSO INCLUDED WILL BE HOT-MIX ASPHALT OR AGGREGATE APRONS AT SIDEROADS AND ENTRANCES, AND PAVEMENT MARKING.

GAS & ELECTRIC
ADAMS ELECTRIC COOPERATIVE
AMEREN CIPS

CABLE T.V.
CASS CABLE TV, INC.

TELEPHONE
FRONTIER COMMUNICATIONS OF SCHUYLER, INC.

WATER & SEWER
CITY OF RUSHVILLE WATER
CAMDEN-LITTLE WATER COMMISSION



FULL SIZE PLANS HAVE BEEN PREPARED USING STANDARD ENGINEERING SCALES. REDUCED SIZE PLANS WILL NOT CONFORM TO STANDARD SCALES. IN MAKING MEASUREMENTS ON REDUCED PLANS THE ABOVE SCALES MAY BE USED.

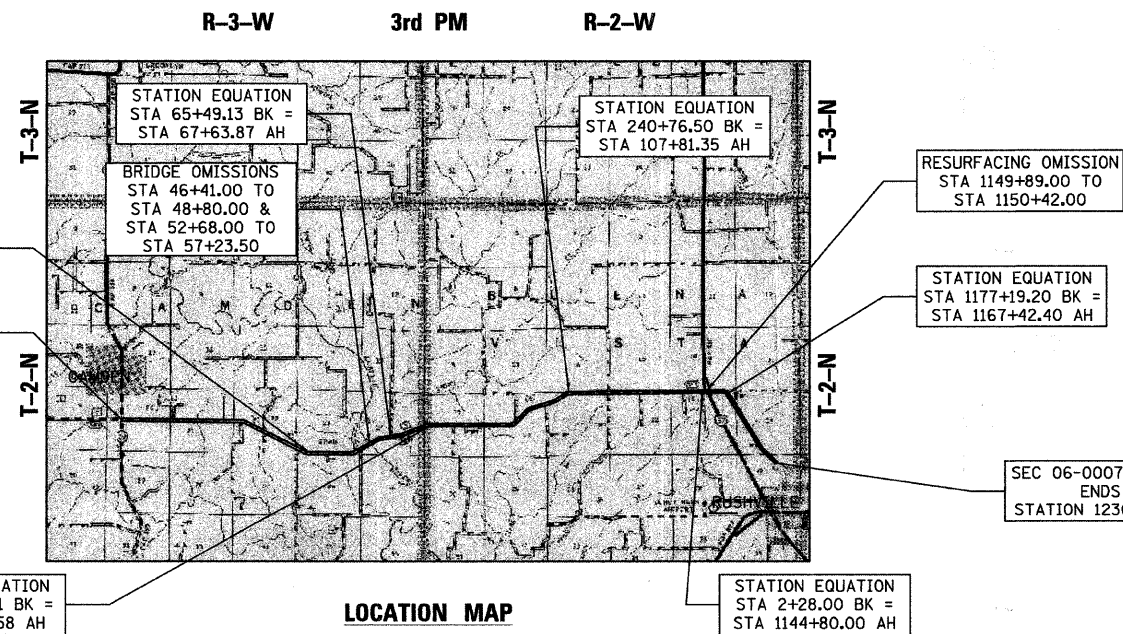
J.U.L.I.E.
JOINT UTILITY LOCATION INFORMATION FOR EXCAVATION
1-800-892-0123 OR 811

DESIGN DESIGNATION
FAS 583
RURAL COLLECTOR
% PV = 85
% SU = 7
% MU = 8

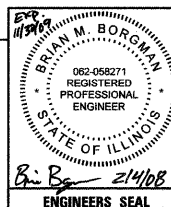
ADT (2028):
CH 5: 1336
SBI 3: 2862

3R GUIDELINES

CONTRACT NO. 93452



HUTCHISON ENGINEERING, INC
CONSULTING ENGINEERS
JACKSONVILLE, ILLINOIS
2008 JOB NO 2485



APPROVED	January 30 20 08
	David J. Schneider P.E. COUNTY ENGINEER
PASSED	FEBRUARY 14 20 08
	Tommy Faust DISTRICT SIX ENGINEER OF LOCAL ROADS & STREETS
PASSED	FEBRUARY 14 20 08
	W. R. Fryer DISTRICT SIX ENGINEER OF CONSTRUCTION
Releasing For Bid Based on Limited Review	FEBRUARY 14 20 08
	Christine M. Reed DEPUTY DIRECTOR OF HIGHWAYS, REGION FOUR ENGINEER
	STATE OF ILLINOIS DEPARTMENT OF TRANSPORTATION

PLOT DATE = 1/30/2008
 PLOT SCALE = 1/8"=1'-0"
 USER NAME = bborngan

CONTRACT NO. 93452

GENERAL NOTES

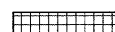
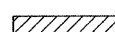
1. THE LOCATION OF UNDERGROUND UTILITIES SHOWN ON THE PLANS REPRESENTS THE BEST KNOWLEDGE OF THE COUNTY AND THE INDICATED ADJUSTMENTS OR RECONSTRUCTION ARE CONSIDERED TO BE REASONABLY ACCURATE. IT SHALL BE THE CONTRACTOR'S RESPONSIBILITY TO VERIFY LOCATIONS OF UNDERGROUND INSTALLATIONS BEFORE STARTING CONSTRUCTION OPERATIONS. THE CONTRACTOR SHALL INDEMNIFY THE COUNTY, ITS OFFICERS, AND EMPLOYEES AGAINST ALL CLAIMS DUE TO DAMAGE TO CORPORATE OR PRIVATE PROPERTY RESULTING FROM HIS CONSTRUCTION OPERATIONS AS DESCRIBED IN ARTICLE 107.20 AND 107.26 OF THE STANDARD SPECIFICATIONS FOR ROAD AND BRIDGE CONSTRUCTION.
2. THE CONTRACTOR SHALL NOTIFY THE AGENCIES AND UTILITIES AT LEAST 10 (TEN) DAYS PRIOR TO ANY CONSTRUCTION IN THE AREA AND SHALL COMPLY WITH ALL RESTRICTIONS FOR EQUIPMENT MOVEMENTS AND CLEARANCES AS REGARDS TO THEIR FACILITIES.
3. BEFORE STARTING ANY EXCAVATION, THE CONTRACTOR MUST CALL J.U.L.I.E. AT 1-800-892-0123 OR 811 FOR FIELD LOCATIONS OF BURIED ELECTRICAL, TELEPHONE, GAS FACILITIES, AND ALL PUBLIC UTILITIES. A 48 HOUR NOTIFICATION IS REQUIRED.
4. WHENEVER IT IS NECESSARY TO REMOVE BITUMINOUS AGGREGATE MIXTURE, OIL AND CHIP SURFACE, EXISTING GRAVEL OR CRUSHED STONE BASE COURSE, IT SHALL BE REMOVED AT THE CONTRACT UNIT PRICE PER CUBIC YARD FOR EARTH EXCAVATION. NO ADDITIONAL COMPENSATION WILL BE ALLOWED FOR ADDITIONAL LABOR OR EQUIPMENT REQUIRED.
5. WHEN DURING CONSTRUCTION OPERATIONS ANY LOOSE MATERIAL IS DEPOSITED IN THE FLOW LINE OF DITCHES, GUTTER OR DRAINAGE STRUCTURES SO THAT THE NATURAL FLOW OF WATER IS OBSTRUCTED, IT SHALL BE REMOVED AT THE CLOSE OF EACH WORKING DAY. AT THE CONCLUSION OF THE CONSTRUCTION OPERATIONS, ALL DRAINAGE STRUCTURES SHALL BE FREE FROM ALL DIRT AND DEBRIS. THIS WORK WILL NOT BE PAID FOR SEPARATELY BUT SHALL BE INCLUDED IN THE COST OF THE HOT-MIX ASPHALT PAVING.
6. THE CONTRACTOR SHALL BE REQUIRED TO PROVIDE ACCESS TO ABUTTING PROPERTY AT ALL TIMES DURING THE CONSTRUCTION OF THIS IMPROVEMENT.
7. TRAFFIC CONTROL SIGNS REMOVED MUST BE RESET AT THEIR PERMANENT LOCATIONS IN A WORKMANLIKE MANNER AND VISIBLE TO TRAFFIC ON THE ROADWAY. THESE SIGNS SHALL BE INSTALLED IN ACCORDANCE WITH THE 'MANUAL ON UNIFORM TRAFFIC CONTROL DEVICES FOR STREET AND HIGHWAYS', LATEST EDITION. THE COST OF SUCH WORK SHALL BE INCLUDED IN THE COST OF THE EARTHWORK.
8. THE NOMINAL THICKNESS FOR THE SURFACE COURSE IS SHOWN ON THE TYPICAL SECTION OR SPECIAL DETAILS. THE CONSTRUCTED THICKNESS OF THE ABOVE ITEMS SHALL NOT BE LESS THAN 90 PER CENT OF THE NOMINAL THICKNESS AT ANY LOCATION.
9. WHERE SECTION OR SUBSECTION STONES OR MARKERS ARE ENCOUNTERED, THE ENGINEER SHALL BE NOTIFIED BEFORE SUCH STONES ARE REMOVED. THE CONTRACTOR SHALL PROTECT AND CAREFULLY PRESERVE ALL PROPERTY MARKERS UNTIL THE OWNER, AN AUTHORIZED SURVEYOR, OR AGENT HAS WITNESSED OR OTHERWISE REFERENCED THEIR LOCATION.
10. ALL PROPOSED PAVEMENT WIDTHS ARE MEASURED EDGE TO EDGE OF PAVEMENT UNLESS OTHERWISE SHOWN ON THE PLANS. INTERSECTION RETURN RADII ARE MEASURED TO THE EDGE OF PAVEMENT.
11. KNOWN UTILITIES LOCATED WITHIN THE LIMITS OF THIS IMPROVEMENT ARE:

ADAMS ELECTRIC COOPERATIVE	AMEREN CIPS
FRONTIER COMMUNICATIONS OF SCHUYLER	CASS CABLE TV
CITY OF RUSHVILLE WATER	CAMDEN-LITTLE WATER COMMISSION
12. THE FOLLOWING MIXTURE REQUIREMENTS ARE APPLICABLE FOR THIS PROJECT:

MIXTURE USE(S)	POLYMER HMA SURF CSE	HMA SHOULDERS	HMA BASE COURSE WIDENING	LEVELING BINDER
AC/PG	SBS PG 70-22	PG 58-22	PG 64-22	PG 64-22
DESIGN AIR VOIDS	4% @ N50	2% @ N30	4% @ N50	4% @ N50
MIX COMPOSITION (GRADATION MIXTURE)	IL-9.5 OR 12.5	ART. 1030.04(a)(3)	IL-19.0	IL-9.5
ERIFION AGGREGATE	MIX "C"	N/A	N/A	N/A

13. AN ESTIMATED QUANTITY HAS BEEN INCLUDED FOR CLASS D PATCHES. THIS ITEM IS TO BE USED AS DIRECTED BY THE ENGINEER.

LEGEND

-  HOT-MIX ASPHALT SURFACE REMOVAL - BUTT JOINT
-  PROPOSED WIDENING

SUMMARY OF QUANTITIES - CONSTRUCTION TYPE CODE 1000-2A			
CODE NO.	PAY ITEM	UNIT	QUANTITY
20200100	EARTH EXCAVATION	CU YD	285
25001000	SEEDING, CLASS 2 (SPECIAL)	ACRE	0.75
28000400	PERIMETER EROSION BARRIER	FOOT	1,800
28000500	INLET AND PIPE PROTECTION	EACH	1
35600708	HOT-MIX ASPHALT BASE COURSE WIDENING, 8"	SQ YD	73
40200800	AGGREGATE SURFACE COURSE, TYPE B	TON	271
40600100	BITUMINOUS MATERIALS (PRIME COAT)	GALLON	21,890
40600300	AGGREGATE (PRIME COAT)	TON	576
40600625	LEVELING BINDER (MACHINE METHOD), N50	TON	7,604
40600895	CONSTRUCTING TEST STRIP	EACH	1
40600982	HOT-MIX ASPHALT SURFACE REMOVAL - BUTT JOINT	SQ YD	1,129
40600990	TEMPORARY RAMP	SQ YD	472
40603510	POLYMERIZED HOT-MIX ASPHALT SURFACE COURSE, MIX "C", N50	TON	14,233
44000157	HOT-MIX ASPHALT SURFACE REMOVAL, 2"	SQ YD	14,655
44201741	CLASS D PATCHES, TYPE II, 8 INCH	SQ YD	75
44201745	CLASS D PATCHES, TYPE III, 8 INCH	SQ YD	75
48102100	AGGREGATE WEDGE SHOULDERS, TYPE B	TON	10,234
48203029	HOT-MIX ASPHALT SHOULDERS, 8"	SQ YD	1,208
67100100	MOBILIZATION	L SUM	1
70103700	TRAFFIC CONTROL COMPLETE	L SUM	1
70300100	SHORT TERM PAVEMENT MARKING	FOOT	11,800
70300210	TEMPORARY PAVEMENT MARKING - LETTERS AND SYMBOLS	SQ FT	32
70300230	TEMPORARY PAVEMENT MARKING - LINE 5"	FOOT	184,390
70300240	TEMPORARY PAVEMENT MARKING - LINE 6"	FOOT	40
70300250	TEMPORARY PAVEMENT MARKING - LINE 8"	FOOT	65
70300260	TEMPORARY PAVEMENT MARKING - LINE 12"	FOOT	106
70300280	TEMPORARY PAVEMENT MARKING - LINE 24"	FOOT	56
70301000	WORK ZONE PAVEMENT MARKING REMOVAL	SQ FT	1,968
78000100	THERMOPLASTIC PAVEMENT MARKING - LETTERS AND SYMBOLS	SQ FT	32
78000300	THERMOPLASTIC PAVEMENT MARKING - LINE 5"	FOOT	184,390
78000400	THERMOPLASTIC PAVEMENT MARKING - LINE 6"	FOOT	40
78000500	THERMOPLASTIC PAVEMENT MARKING - LINE 8"	FOOT	65
78000600	THERMOPLASTIC PAVEMENT MARKING - LINE 12"	FOOT	106
78000650	THERMOPLASTIC PAVEMENT MARKING - LINE 24"	FOOT	56
Z0013798	CONSTRUCTION LAYOUT	L SUM	1

* SEE SPECIAL PROVISIONS
 Δ SPECIALTY ITEMS

CONSTRUCTION TYPE CODE: 1000-2A

THE FOLLOWING RATES OF APPLICATION HAVE BEEN ASSUMED IN CALCULATING PLAN QUANTITIES:
 AGGREGATE (SURFACE, BASE, SUBBASE OR BACKFILL).....2.05 TON/CUBIC YARD
 BITUMINOUS MATERIALS (PRIME COAT).....0.075 GAL/SQUARE YARD
 HMA SURFACE/BINDER (112 LBS).....0.056 TON/SQUARE YARD•INCH

REVISIONS	
NAME	DATE

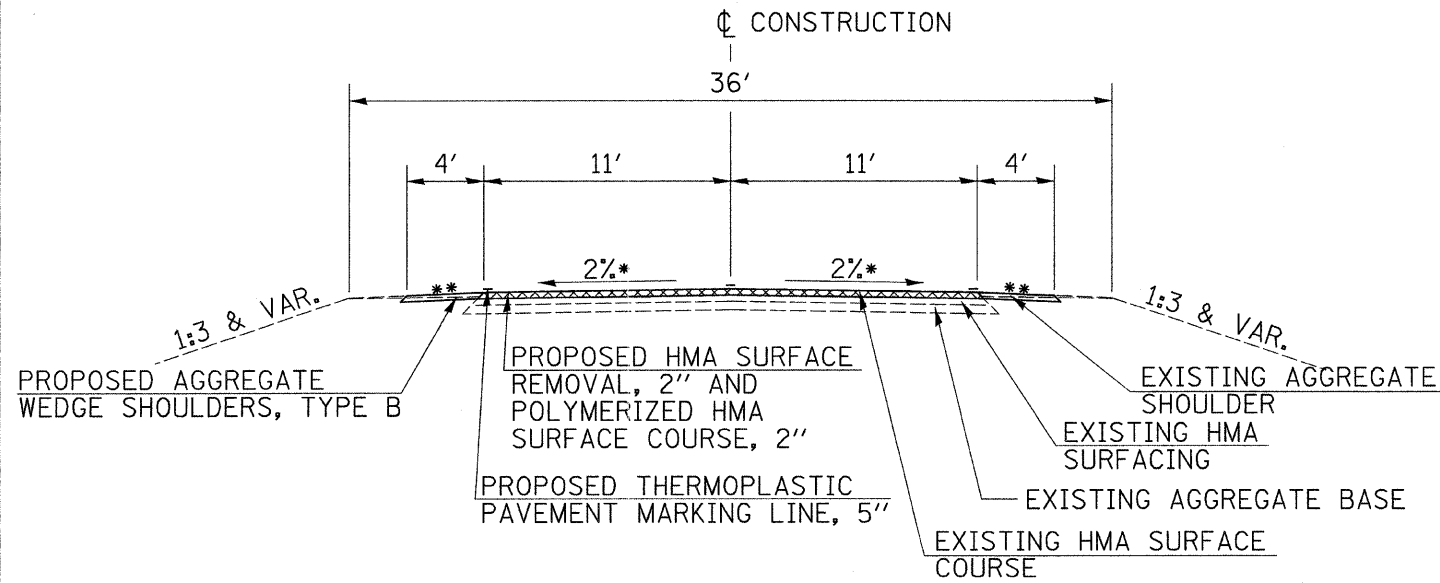
ILLINOIS DEPARTMENT OF TRANSPORTATION

**GENERAL NOTES, LEGEND,
SUMMARY OF QUANTITIES**

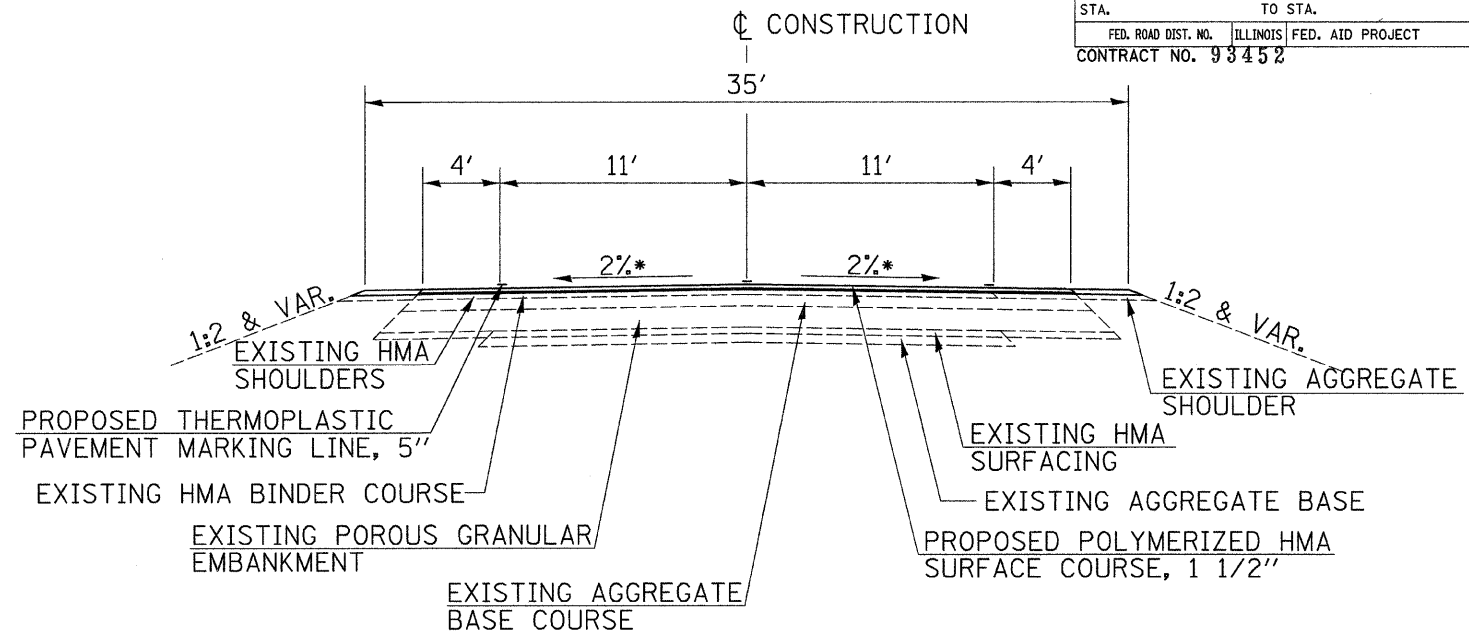
DRAWN BY:
CHECKED BY:

DATE: JANUARY, 2008

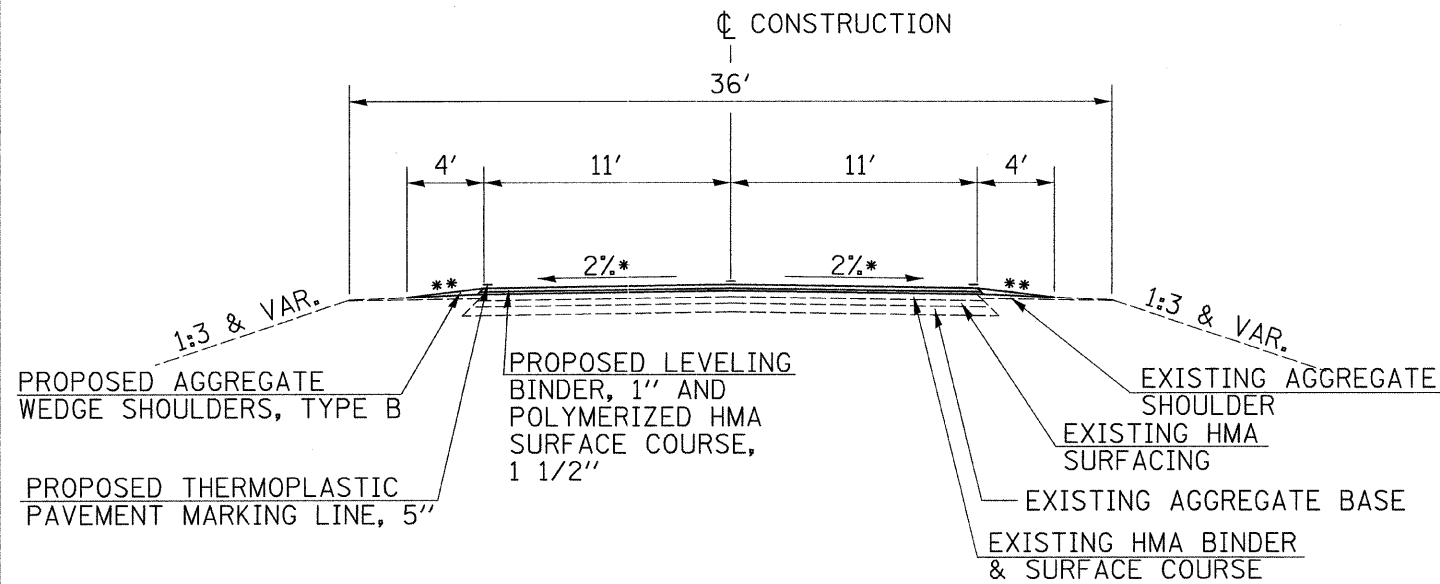
F.A.S. RTE.	SECTION	COUNTY	TOTAL SHEETS	SHEET NO.
583	06-00071-00-RS	SCHUYLER	21	3
STA.		TO STA.		
FED. ROAD DIST. NO.		ILLINOIS	FED. AID PROJECT	
CONTRACT NO. 93452				



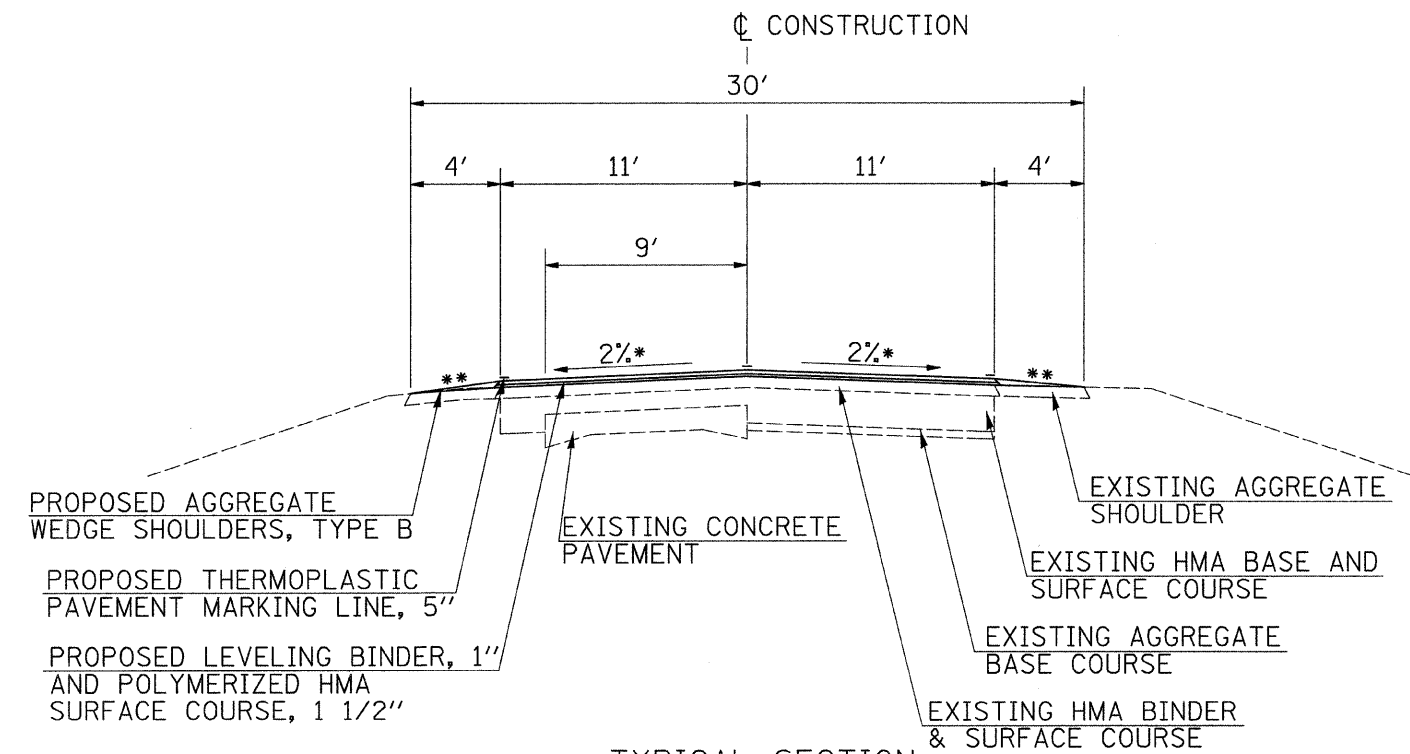
TYPICAL SECTION
STA 0+79.55 TO STA 13+00.00



TYPICAL SECTION
BRIDGE OMISSION STA 46+41.00 TO 48+80.00
STA 48+80.00 TO STA 52+68.00
BRIDGE OMISSION STA 52+68.00 TO 57+23.50
STA 57+23.50 TO STA 62+50.00



TYPICAL SECTION
STA 13+00.00 TO STA 166+00.00
STA EQN 166+00.00 BK = 4+44.94 AH
STA 4+44.94 TO STA 46+41.00
STA EQN 46+41.00 TO STA 65+49.13
STA EQN 65+49.13 BK = 67+63.87 AH
STA 67+63.87 TO STA 113+28.71
STA EQN 113+28.71 BK = 113+36.58 AH
STA 113+36.58 TO STA 240+76.50
STA EQN 240+76.50 BK = 107+81.35 AH



TYPICAL SECTION
STA 107+81.35 TO STA 2+28.00
STA EQN 2+28.00 BK = 1144+80.00 AH

- * OR SUPERELEVATION RATE
- ** TYPICAL SHOULDER SLOPE IS 6% WITH MAXIMUM ROLLOVER FACTOR NOT TO EXCEED 12%

REVISIONS	
NAME	DATE

ILLINOIS DEPARTMENT OF TRANSPORTATION

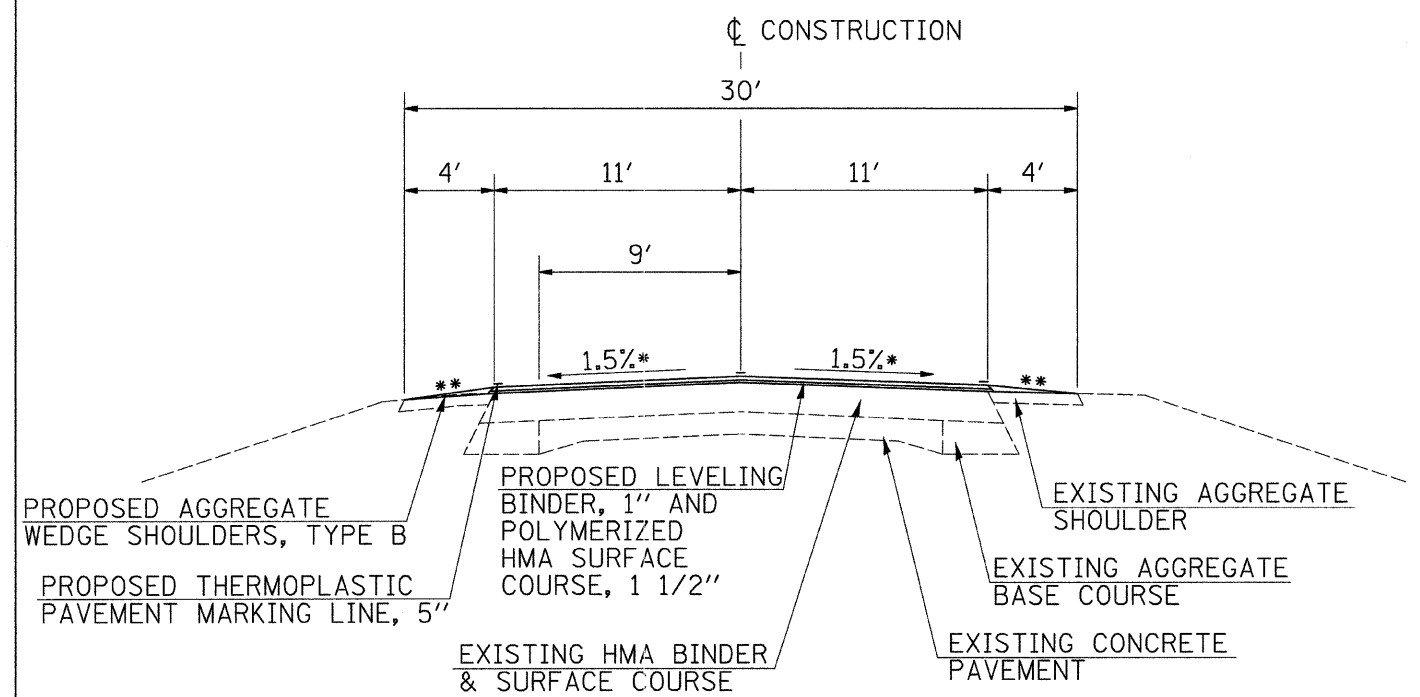
PROPOSED
TYPICAL SECTIONS

DATE: JANUARY, 2008

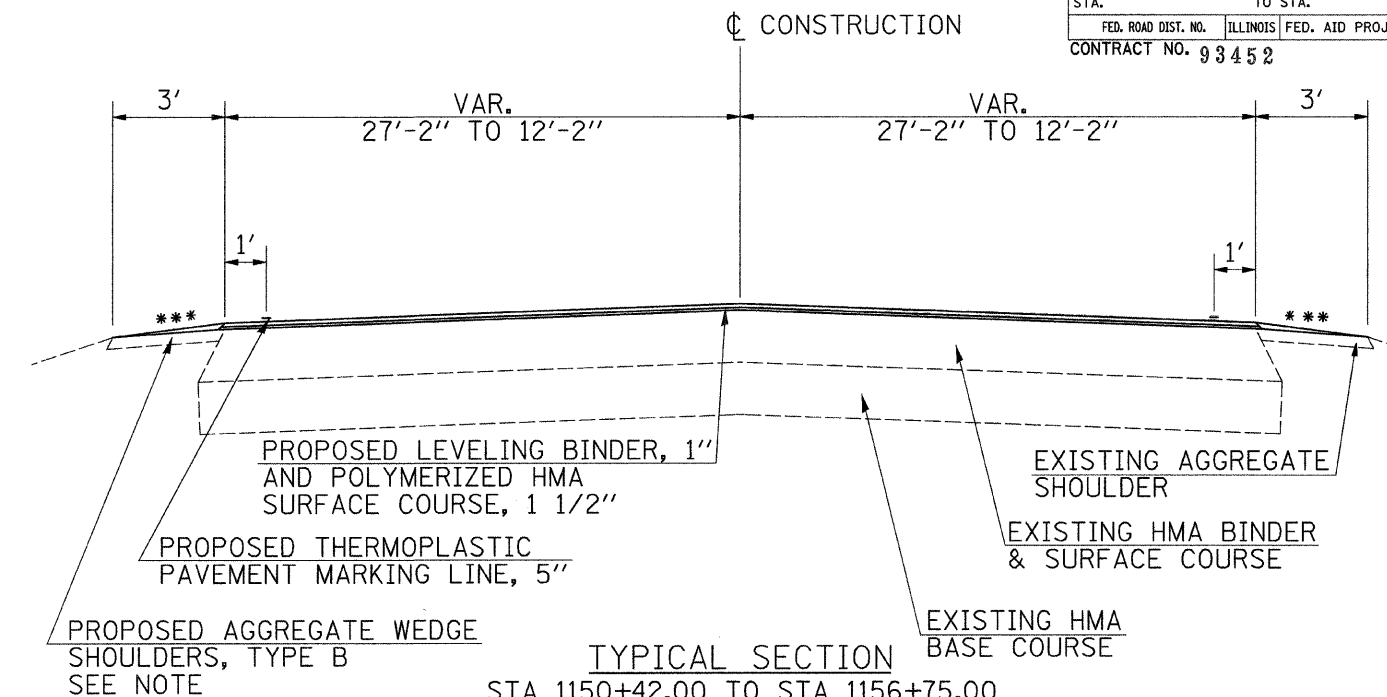
DRAWN BY
CHECKED BY

PLOT DATE = 2/1/2008
 PLOT TIME = 10:55:45 AM
 PLOT SCALE = 1/8" = 1'-0"
 USER NAME = bborghman

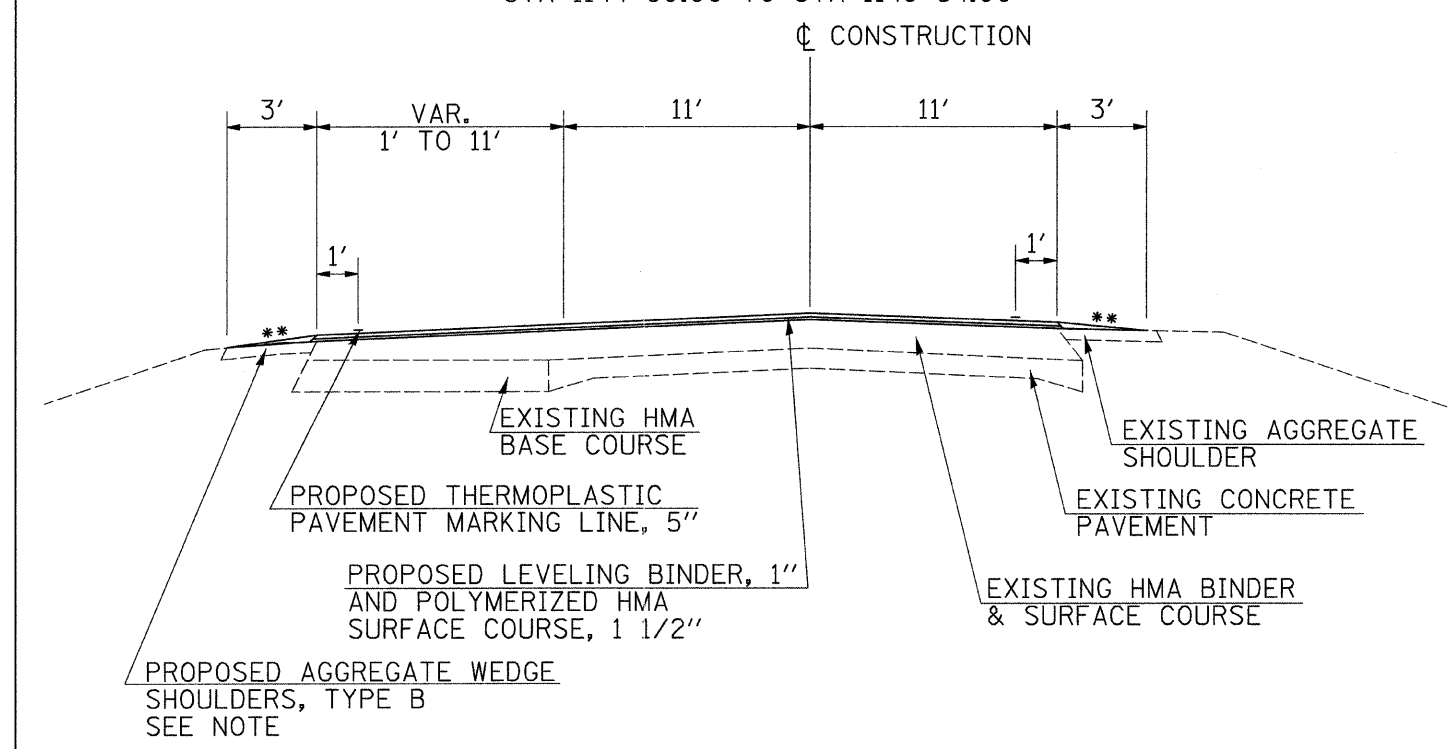
F.A.S. RTE.	SECTION	COUNTY	TOTAL SHEETS	SHEET NO.
583	06-00071-00-RS	SCHUYLER	21	4
STA.		TO STA.		
FED. ROAD DIST. NO.		ILLINOIS	FED. AID PROJECT	
CONTRACT NO. 93452				



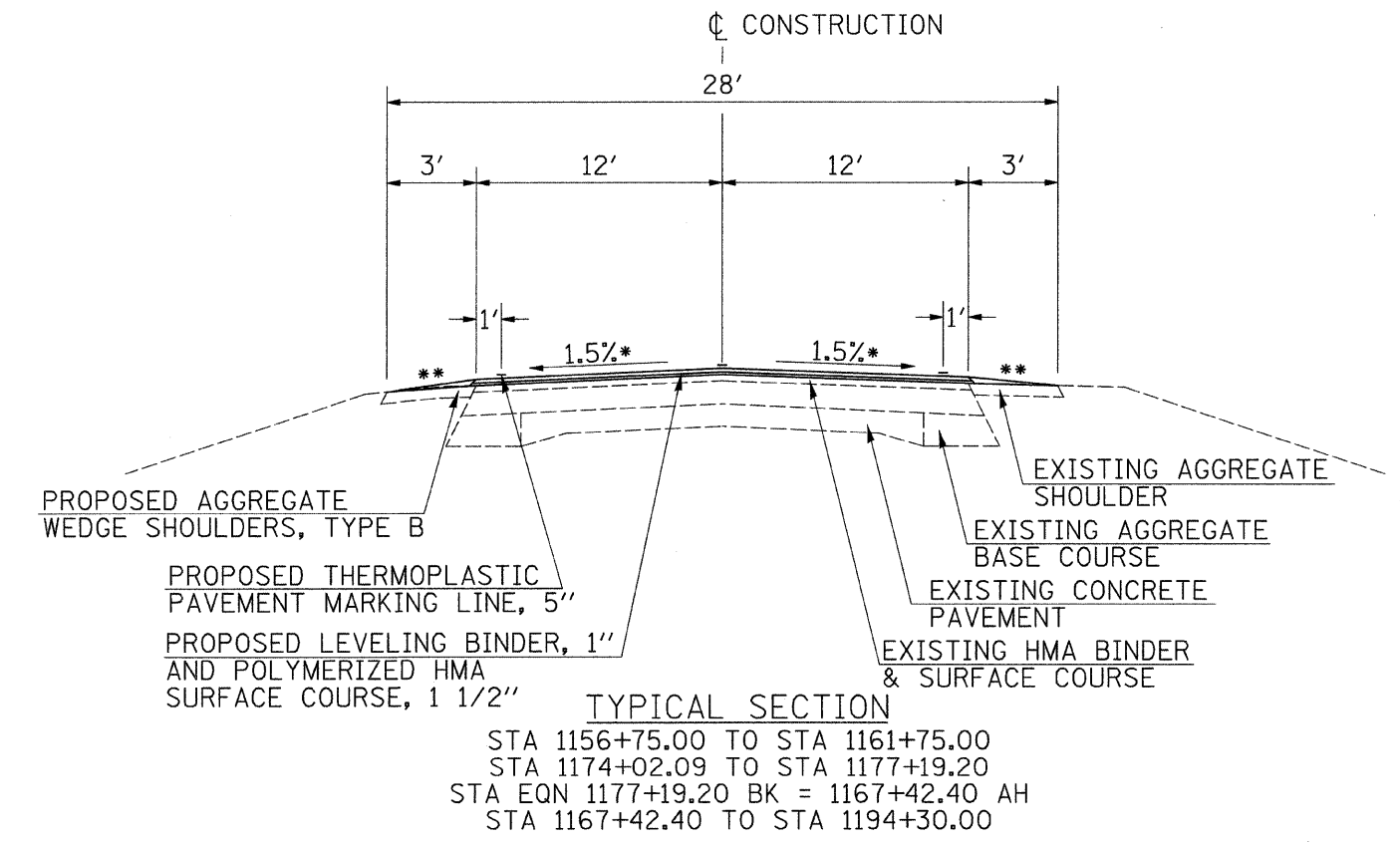
TYPICAL SECTION
STA 1144+80.00 TO STA 1148+54.00



TYPICAL SECTION
STA 1150+42.00 TO STA 1156+75.00
SEE PAVEMENT MARKING DETAIL



TYPICAL SECTION
STA 1148+54.00 TO STA 1149+89.00
RESURFACING OMISSION STA 1149+89.00 TO 1150+42.00
SEE PAVEMENT MARKING DETAIL



TYPICAL SECTION
STA 1156+75.00 TO STA 1161+75.00
STA 1174+02.09 TO STA 1177+19.20
STA EQN 1177+19.20 BK = 1167+42.40 AH
STA 1167+42.40 TO STA 1194+30.00

- * OR SUPERELEVATION RATE
- ** TYPICAL SHOULDER SLOPE IS 6% WITH MAXIMUM ROLLOVER FACTOR NOT TO EXCEED 12%
- *** 8" HMA SHOULDERS 1150+42 TO 1152+00

NOTE: HMA SHOULDERS AT US 67 INTERSECTION. SEE SHEETS 19-20.

REVISIONS	
NAME	DATE

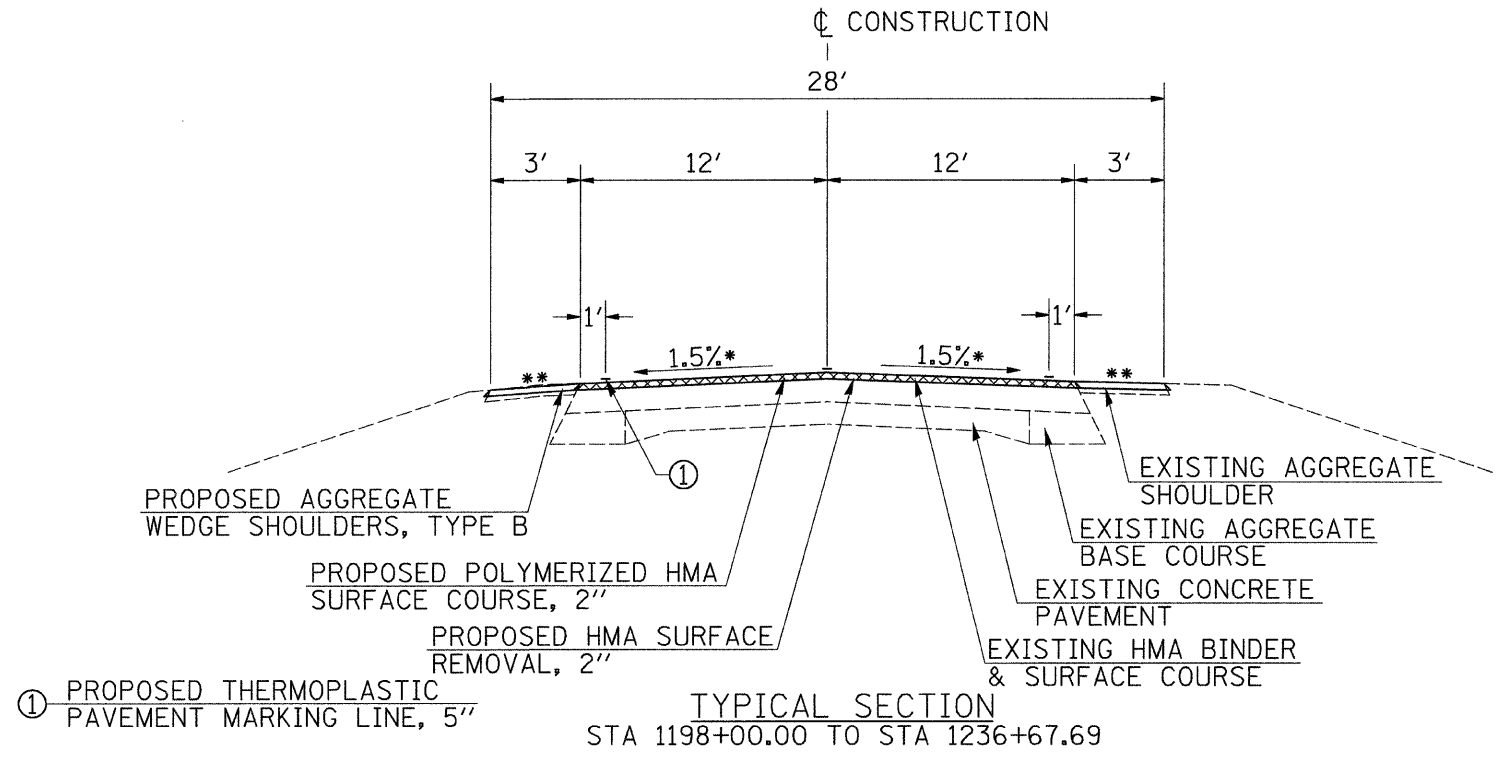
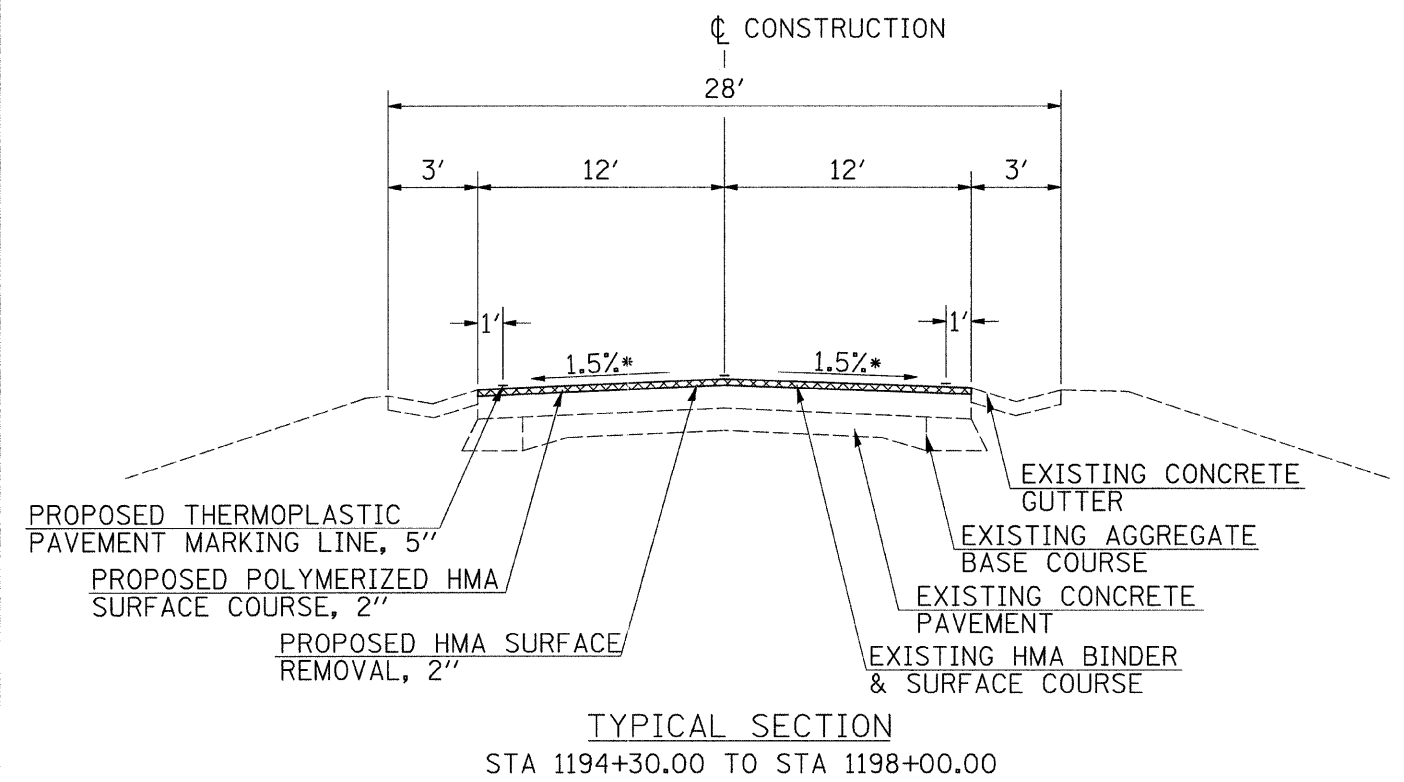
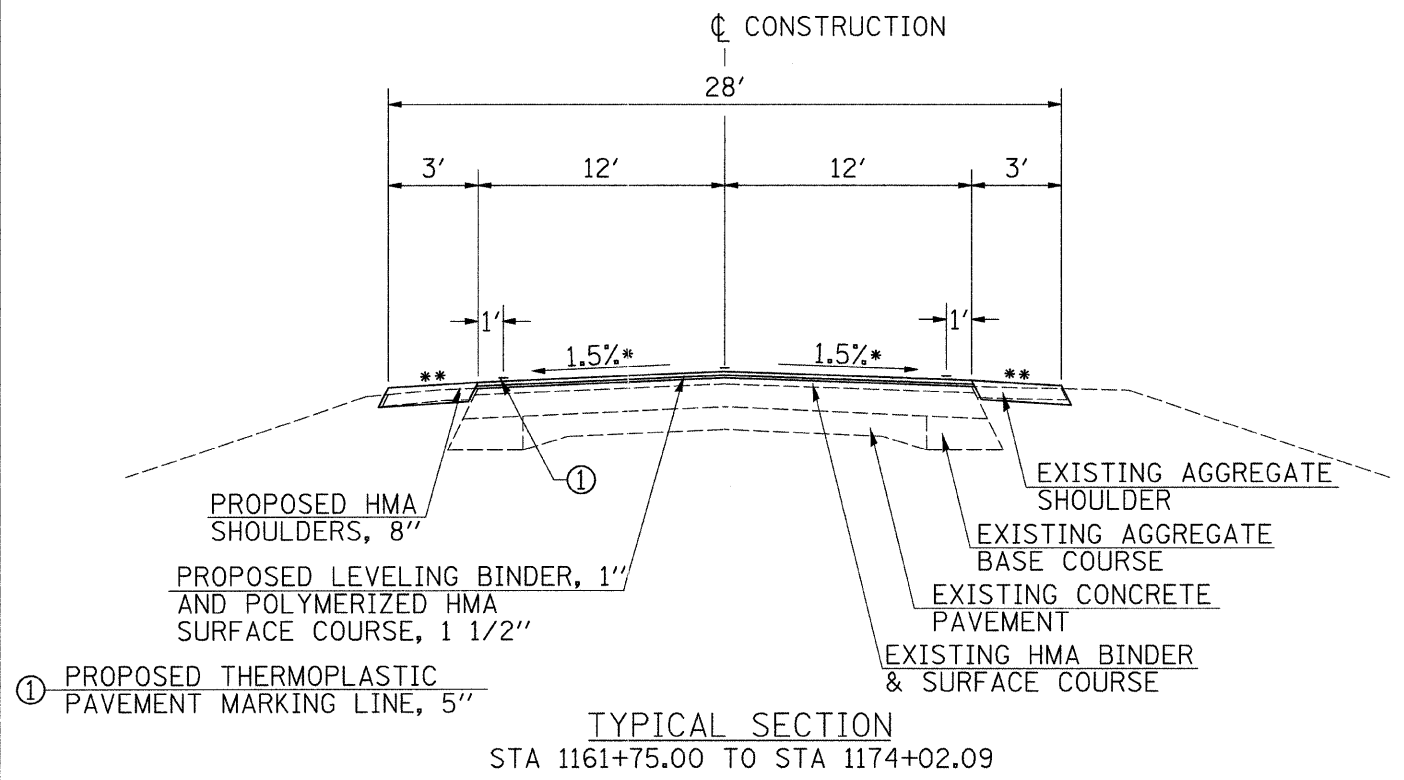
ILLINOIS DEPARTMENT OF TRANSPORTATION

PROPOSED
TYPICAL SECTIONS

DRAWN BY
CHECKED BY

DATE: JANUARY, 2008

PLOT DATE = 2/1/2008
 PLOT FILE = I:\1150\1150-06\1150-06.dgn
 PLOT SCALE = 1/8" = 1'-0"
 USER NAME = lsborgman



* OR SUPERELEVATION RATE
 ** TYPICAL SHOULDER SLOPE IS 6% WITH MAXIMUM ROLLOVER FACTOR NOT TO EXCEED 12%

PLOT DATE = 2/1/2008
 PLOT SCALE = 1/8" = 1'-0"
 USER NAME = lbborgman

REVISIONS	
NAME	DATE

ILLINOIS DEPARTMENT OF TRANSPORTATION
 PROPOSED TYPICAL SECTIONS
 DRAWN BY
 CHECKED BY
 DATE: JANUARY, 2008

CONTRACT NO. 93452

PAVEMENT MARKING SCHEDULE

STATION TO STATION	SIDE	DESCRIPTION	THERMOPLASTIC PAVEMENT MARKING						LETTERS & SYMBOLS	SQ FT
			LINE 5"		LINE 6"	LINE 8"	LINE 12"	LINE 24"		
			WHITE	YELLOW	WHITE	WHITE	WHITE	YELLOW		
CAMDEN ROAD (CH 5)										
0+30	LT	STOP BAR							18	
0+30	3+55	CL	WB NPZ						325	
0+30	14+85	CL	EB NPZ						1,455	
0+00	166+00	RT	EOP	16,600						
0+00	166+00	LT	EOP	16,600						
3+55	13+40	CL	SKIP-DASH						246	
13+40	24+05	CL	WB NPZ						1,065	
14+85	89+75	CL	SKIP-DASH						1,873	
77+85	84+65	CL	EB NPZ						680	
86+80	93+80	CL	WB NPZ						700	
89+75	97+15	CL	EB NPZ						740	
93+80	106+15	CL	SKIP-DASH						309	
99+60	107+05	CL	WB NPZ						745	
106+15	111+80	CL	EB NPZ						565	
107+05	118+85	CL	SKIP-DASH						295	
114+95	121+70	CL	WB NPZ						675	
118+85	123+75	CL	EB NPZ						490	
121+70	159+55	CL	SKIP-DASH						946	
129+35	133+80	CL	WB NPZ						445	
149+70	160+55	CL	EB NPZ						1,085	
160+55	166+00	CL	SKIP-DASH						136	
159+55	166+00	CL	WB NPZ						645	
STA 166+00.00 BK = STA 4+44.94 AH										
4+45	9+20	CL	WB NPZ						475	
4+45	7+20	CL	SKIP-DASH						69	
4+45	65+49	RT	EOP	6,104						
4+45	65+49	LT	EOP	6,104						
7+20	17+45	CL	EB NPZ						1,025	
9+20	52+45	CL	SKIP-DASH						1,081	
17+55	26+75	CL	WB NPZ						920	
26+85	35+05	CL	EB NPZ						820	
37+30	46+05	CL	WB NPZ						875	
48+35	56+85	CL	EB NPZ						850	
52+45	65+49	CL	WB NPZ						1,304	
56+85	65+49	CL	SKIP-DASH						216	
STA 65+49.13 BK = STA 67+63.87 AH										
67+64	69+15	CL	WB NPZ						151	
67+64	95+65	CL	SKIP-DASH						700	
67+64	113+29	RT	EOP	4,565						
67+64	113+29	LT	EOP	4,565						
87+95	111+45	CL	EB NPZ						2,350	
95+65	113+29	CL	WB NPZ						1,764	
111+45	113+29	CL	SKIP-DASH						46	
STA 113+28.71 BK = STA 113+36.58 AH										
113+37	120+10	CL	WB NPZ						673	
113+37	168+35	CL	SKIP-DASH						1,375	
113+37	240+77	RT	EOP	12,740						
113+37	240+77	LT	EOP	12,740						
120+70	128+65	CL	EB NPZ						795	
130+70	137+35	CL	WB NPZ						665	
153+65	160+90	CL	EB NPZ						725	
163+30	169+80	CL	WB NPZ						650	
168+35	202+45	CL	EB NPZ						3,410	
169+80	175+55	CL	SKIP-DASH						144	
175+55	210+75	CL	WB NPZ						3,520	
202+45	210+15	CL	SKIP-DASH						193	
210+15	236+35	CL	EB NPZ						2,620	
210+75	220+15	CL	SKIP-DASH						235	
236+35	240+77	CL	SKIP-DASH						111	
220+15	240+77	CL	WB NPZ						2,062	
STA 240+76.50 BK = STA 107+81.35 AH										
107+81	103+05	CL	WB NPZ						476	
107+81	2+28	RT	EOP	10,553						
107+81	2+28	LT	EOP	10,553						
107+81	2+28	CL	SKIP-DASH						2,638	
27+90	21+35	CL	EB NPZ						655	
18+80	11+45	CL	WB NPZ						735	
STA 2+28.00 BK = STA 1144+80.00 AH										
1144+80	1149+65	CL	SKIP-DASH						121	
1144+80	1149+65	RT	EOP	485						

PAVEMENT MARKING SCHEDULE (CONTINUED)

STATION TO STATION	SIDE	DESCRIPTION	THERMOPLASTIC PAVEMENT MARKING						LETTERS & SYMBOLS	SQ FT	
			LINE 5"		LINE 6"	LINE 8"	LINE 12"	LINE 24"			
			WHITE	YELLOW	WHITE	WHITE	WHITE	YELLOW			WHITE
OMISSION STA 1149+89.00 TO STA 1150+42.00											
1144+80	1149+65	LT	EOP	485							
		RT	STOP BAR						16		
OLD MACOMB ROAD (SBI 3)											
1150+60	LT	STOP BARS							22		
1150+42	1156+80	LT & RT	INTERSECTION	137	2,457	40	65	34	72	31.2	
1150+42	1156+80	RT	EOP	663							
1156+80	1169+70	CL	EB NPZ						1,290		
1156+80	1176+55	CL	WB NPZ						1,975		
1156+80	1177+19	RT	EOP	2,039							
1156+80	1177+19	LT	EOP	2,039							
1169+70	1177+19	CL	SKIP-DASH						187		
STA 1177+19.20 BK = STA 1167+42.40 AH											
1167+42	1236+68	RT	EOP	6,926							
1167+42	1236+68	LT	EOP	6,926							
1167+42	1180+20	CL	SKIP-DASH						320		
1170+25	1210+85	CL	EB NPZ						4,060		
1180+20	1221+50	CL	WB NPZ						4,130		
1210+85	1236+68	CL	SKIP-DASH						646		
TOTALS											
USE				121,456	62,934	40	65	34	72	56	31.2
USE				184,390		40	65	106	56	32	

MILLING SCHEDULE

STATION TO STATION	HOT-MIX ASPHALT SURFACE REMOVAL - BUTT JOINT	HOT-MIX ASPHALT SURFACE REMOVAL, 2"
0+00.00	13+00.00	3,353.8
45+91.10	46+41.10	122.2
48+80.00	49+10.00	100.0
52+38.00	52+68.00	100.0
57+23.50	57+53.50	100.0
1149+39.00	1149+89.00	298.8
1150+42.00	1150+92.00	407.3
1194+30.00	1236+67.69	11,300.5
TOTALS		1,128.3
USE		1,129

PAVEMENT SCHEDULE

STATION TO STATION	EARTH EXCAVATION	HOT-MIX ASPHALT BASE COURSE WIDENING, 8"	AGGREGATE SURFACE COURSE, TYPE B	BITUMINOUS MATERIALS (PRIME COAT)	AGGREGATE (PRIME COAT)	LEVELING BINDER (MACHINE METHOD), N50	POLYMERIZED HOT-MIX ASPHALT SURFACE COURSE, MIX "C", N50	AGGREGATE WEDGE SHOULDERS, TYPE B	HOT-MIX ASPHALT SHOULDERS, 8"	
										CU YD
CAMDEN ROAD (CH 5)										
0+00.00	0+54.55	34.4	72.7		28.6	0.8		42.8	20.7	81.8
0+54.55	12+50.00				219.2	5.8		330.4	212.8	
12+50.00	13+00.00				9.2	0.2		24.2	8.9	
13+00.00	166+00.00				5,610.0	149.6	2,114.4	3,171.6	2,723.4	
STA 166+00.00 BK = STA 4+44.94 AH										
4+44.94	46+41.10				1,538.6	41.0	579.9	869.8	746.9	
OMISSION STA 46+41.10 TO STA 48+80.00										
48+80.00	52+68.00				97.0	2.6		109.1	69.1	
OMISSION STA 52+68.00 TO STA 57+23.50										
57+23.50	62+50.00				131.6	3.5		148.1	93.7	
62+50.00	65+49.13				109.6	3.0	41.3	62.0	53.2	
STA 65+49.13 BK = STA 67+63.87										
67+63.87	113+28.71				1673.8	44.6	630.8	946.2	812.5	
STA 113+28.71 BK = STA 113+36.58 AH										
113+36.58	240+76.50				4,671.4	124.6	1,760.6	2,640.9	2,267.7	
STA 240+76.50 BK = STA 107+81.35 AH										
107+81.35	2+28.00				3,869.6	103.2	1,458.4	2,187.7	1,878.5	
STA 2+28.00 BK = STA 1144+80.00 AH										
1144+80.00	1148+46.16				134.2	3.6	50.6	75.9	65.2	
1148+46.16	1149+89.00	33.5			91.6	2.4	34.2	51.2	29.3	150.9
OMISSION STA 1149+89.00 TO STA 1150+42.00										
OLD MACOMB ROAD (SBI 3)										
1150+42.00	1156+75.00	38.3			455.0	12.2	169.6	254.4	93.7	172.6
1156+75.00	1177+19.20	178.2			793.6	21.2	298.9	437.2	257.9	801.9
STA 1177+19.20 BK = STA 1167+42.40 AH										
1167+42.40	1194+30.00				1,075.0	28.6	464.9	607.3	349.4	
1194+30.00	1198+00.00				74.0	2.0		110.5	48.1	
1198+00.00	1236+62.69				773.5	20.6		1,165.3	502.8	
SIDEROADS										
TULIS ROAD					182.5	4.9		340.6		
ENTRANCES				270.4	56.2	1.5		104.6		
MAILBOX TURNOUTS					279.2			521.8		
TOTALS		284.4	72.7	270.4	21,889.9	575.9	7,603.6	14,232.4	10,233.8	1,207.2
USE		285	73	271	21,890	576	7,604	14,233	10,234	1,208

REVISIONS	
NAME	DATE

ILLINOIS DEPARTMENT OF TRANSPORTATION
SCHEDULES OF QUANTITIES

F.A. RTE.	SECTION	COUNTY	TOTAL SHEETS	SHEET NO.
	06-00071-00-RS	SCHUYLER	21	7
STA. 0+00		TO STA. 59+00		
FED. ROAD DIST. NO.	ILLINOIS	FED. AID PROJECT		

IL 99

NOTE: FOR CH 5/IL 99 INTERSECTION DETAIL, SEE SHEET NUMBER 18

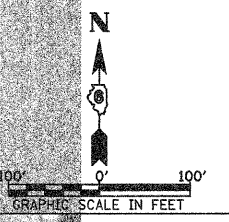
CL SURVEY & CONSTRUCTION
COUNTY HIGHWAY 5 (CAMDEN ROAD)



SECTION 06-00071-00-RS
BEGINS
STA 0+00.00

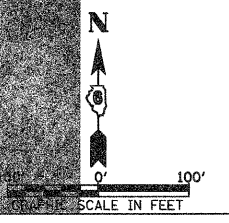
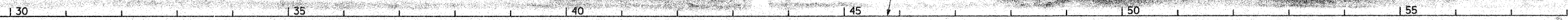
- ①-MILL 2" & RESURFACE 2"
- ②-RESURFACE 2 1/2"

IL 99



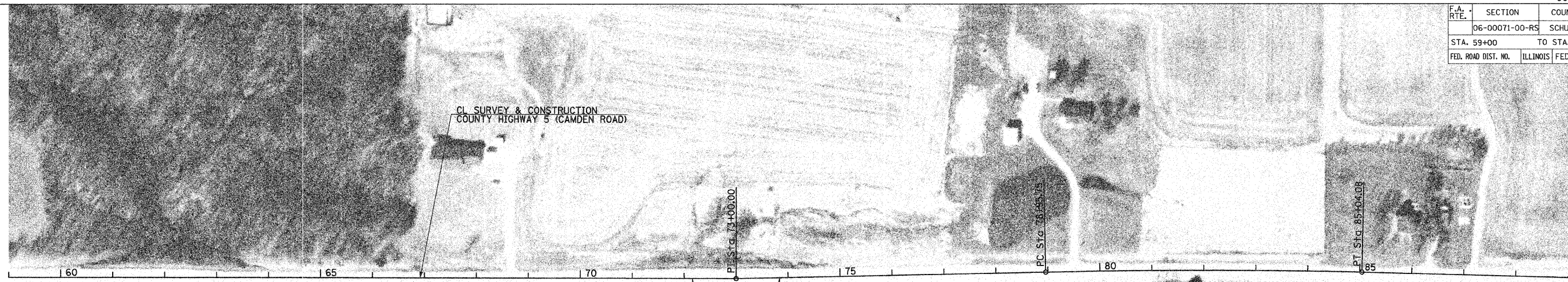
CL SURVEY & CONSTRUCTION
COUNTY HIGHWAY 5 (CAMDEN ROAD)

LAWSON ROAD

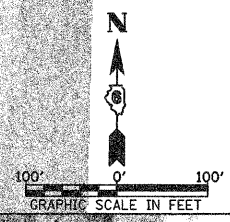


PLOT DATE = 2/1/2008
FILE NAME = V:\2485\VP1.dgn
PLOT SCALE = 98.8185' / IN.
USER NAME = lborghman

F.A. RTE.	SECTION	COUNTY	TOTAL SHEETS	SHEET NO.
06-00071-00-RS	SCHUYLER		21	8
STA. 59+00		TO STA. 119+00		
FED. ROAD DIST. NO.	ILLINOIS	FED. AID PROJECT		

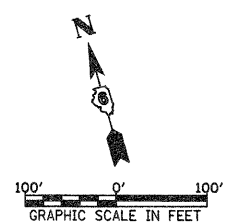


CURVE CH5-1-1
 PI STA. = 82+00.00
 $\Delta = 2^\circ 26' 01''$ (RT)
 $D = 0^\circ 24' 00''$
 $R = 14,323.95'$
 $T = 304.25'$
 $L = 608.33'$
 $E = 3.30'$
 $e = NC$
 P.C. STA 78+95.75
 P.T. STA 85+04.08



CURVE CH5-1-2
 PI STA. = 99+04.80
 $\Delta = 16^\circ 40' 00''$ (RT)
 $D = 2^\circ 30' 00''$
 $R = 2,291.83'$
 $T = 335.72'$
 $L = 666.67'$
 $E = 24.44'$
 $e = 4.8\%$
 P.C. STA 95+63.08
 P.T. STA 102+35.75
 S.E. ATTAINED STA 94+69.08 TO STA 96+19.08
 S.E. REMOVED STA 101+85.75 TO STA 103+35.75

CURVE CH5-1-3
 PI STA. = 114+00.00
 $\Delta = 15^\circ 30' 00''$ (RT)
 $D = 2^\circ 30' 00''$
 $R = 2,291.83'$
 $T = 311.92'$
 $L = 620.00'$
 $E = 21.12'$
 $e = 4.8\%$
 P.C. STA 110+88.08
 P.T. STA 117+08.08
 S.E. ATTAINED STA 109+88.08 TO STA 111+38.08
 S.E. REMOVED STA 116+56.08 TO STA 118+08.08



PLOT DATE = 2/1/2008
 FILE NAME = V:\2486VFP2.dgn
 PLOT SCALE = 98.8185' / IN.
 USER NAME = bbargman

F.A. RTE.	SECTION	COUNTY	TOTAL SHEETS	SHEET NO.
	06-00071-00-RS	SCHUYLER	21	9
STA. 119+00		TO STA. 18+00		
FED. ROAD DIST. NO.		ILLINOIS FED. AID PROJECT		

CURVE CH5-1-4
 PI STA. = 126+79.20
 $\Delta = 14^\circ 35' 00''$ (LT)
 $D = 2^\circ 00' 00''$
 $R = 2,864.79'$
 $T = 366.55'$
 $L = 729.17'$
 $E = 23.38'$
 $e = 3.8\%$
 P.C. STA 123+12.65
 P.T. STA 130+41.82
 S.E. ATTAINED STA 122+12.65 TO STA 123+62.65
 S.E. REMOVED STA 122+12.82 TO STA 131+41.82

CURVE CH5-1-5
 PI STA. = 139+00.00
 $\Delta = 8^\circ 12' 00''$ (RT)
 $D = 1^\circ 15' 00''$
 $R = 4,583.66'$
 $T = 328.86'$
 $L = 656.00'$
 $E = 11.78'$
 $e = 2.5\%$
 P.C. STA 135+71.44
 P.T. STA 142+27.44
 S.E. ATTAINED STA 134+71.44 TO STA 136+21.44
 S.E. REMOVED STA 141+77.44 TO STA 143+27.44

CURVE CH5-1-6
 PI STA. = 160+67.10
 $\Delta = 27^\circ 08' 00''$ (LT)
 $D = 3^\circ 00' 00''$
 $R = 1,909.86'$
 $T = 460.88'$
 $L = 904.44'$
 $E = 54.83'$
 $e = 5.3\%$
 P.C. STA 156+06.22
 P.T. STA 165+10.66
 S.E. ATTAINED STA 155+06.22 TO STA 156+56.22
 S.E. REMOVED STA 164+60.66 TO STA 166+10.66

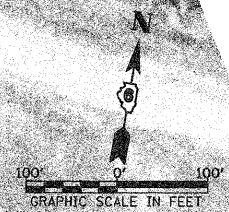
STATION EQUATION
 STA 166+00.00 BK =
 STA 4+44.94 AH

DATE = 2/1/2008
 FILE NAME = V:\2485\VP3.dgn
 PLOT SCALE = 99.8185 / IN.
 USER NAME = bborghman

F.A. RTE.	SECTION	COUNTY	TOTAL SHEETS	SHEET NO.
06-00071-00-RS		SCHUYLER	21	10
STA. 18+00		TO STA. 81+00		
FED. ROAD DIST. NO.	ILLINOIS	FED. AID PROJECT		

- ①-RESURFACE 2 1/2"
- ②-RESURFACE 1 1/2"

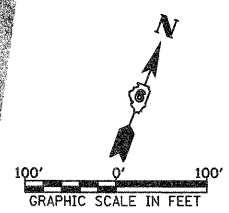
CURVE CH5-2-1
 P.I. STA. = 39+03.00
 $\Delta = 32^\circ 37' 00''$ (LT)
 $D = 3^\circ 30' 00''$
 $R = 1,637.02'$
 $T = 476.97'$
 $L = 931.91'$
 $E = 68.62'$
 $e = 5.5\%$
 P.C. STA 34+24.03
 P.T. STA 43+55.94
 S.E. ATTAINED STA 33+24.03 TO STA 34+74.03
 S.E. REMOVED STA 43+05.94 TO STA 44+55.94



- ①-RESURFACE 2 1/2"
- ②-RESURFACE 1 1/2"

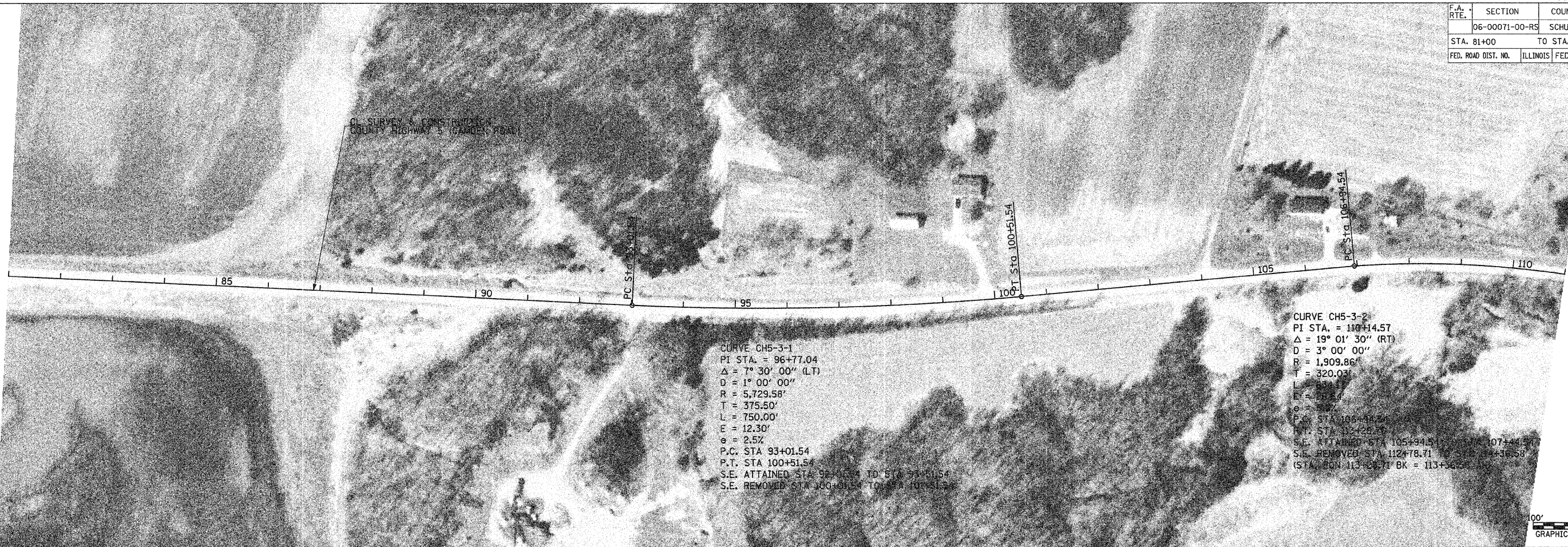
CURVE CH5-2-2
 P.I. STA. = 61+12.70
 $\Delta = 21^\circ 12' 00''$ (RT)
 $D = 3^\circ 30' 00''$
 $R = 1,637.02'$
 $T = 306.37'$
 $L = 605.71'$
 $E = 28.43'$
 $e = 5.5\%$
 P.C. STA 57+06.33
 P.T. STA 64+12.04
 S.E. ATTAINED STA 57+06.33 TO STA 58+56.33
 S.E. REMOVED STA 63+62.04 TO STA 65+12.04

STATION EQUATION
 STA 65+49.13 BK =
 STA 67+63.87 AR



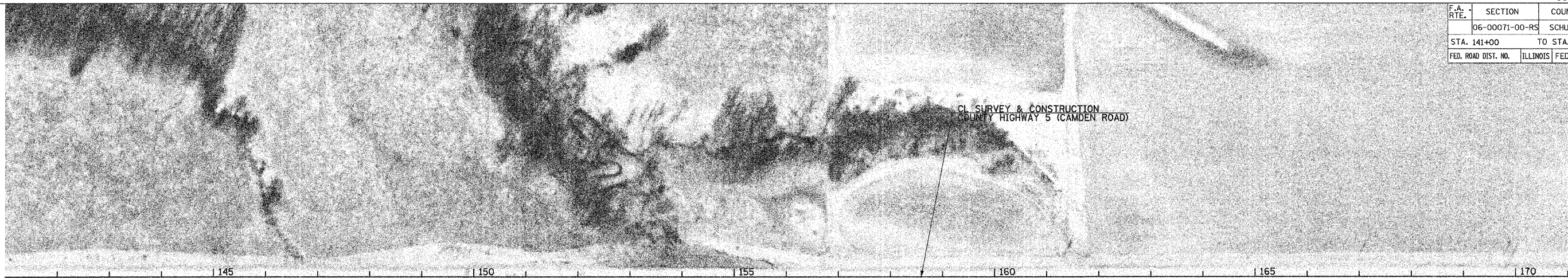
PLOT DATE = 2/1/2008
 FILE NAME = V:\2485\PP4.dgn
 PLOT SCALE = 99.885' / IN.
 USER NAME = lborgman

F.A. RTE.	SECTION	COUNTY	TOTAL SHEETS	SHEET NO.
	06-00071-00-RS	SCHUYLER	21	11
STA. 81+00		TO STA. 141+00		
FED. ROAD DIST. NO.	ILLINOIS	FED. AID PROJECT		



DATE = 2/1/2008
FILE NAME = V:\2488\VP\PP5.dgn
PLOT SCALE = 99.8185' / IN.
USER NAME = bborghman

F.A. RTE.	SECTION	COUNTY	TOTAL SHEETS	SHEET NO.
	06-00071-00-RS	SCHUYLER	21	12
STA. 141+00		TO STA. 202+00		
FED. ROAD DIST. NO.	ILLINOIS	FED. AID PROJECT		



PLOT DATE = 2/1/2008
 FILE NAME = V:\2485V\FR6.dgn
 PLOT SCALE = 98.8185' / IN.
 USER NAME = bborgman

F.A. RTE.	SECTION	COUNTY	TOTAL SHEETS	SHEET NO.
	06-00071-00-RS	SCHUYLER	21	13
STA. 202+00		TO STA. 86+00		
FED. ROAD DIST. NO.	ILLINOIS	FED. AID PROJECT		

CURVE CH5-4-2
 PI STA. = 201+01.65
 $\Delta = 31^{\circ} 08' 00''$ (RT)
 $D = 3^{\circ} 00' 00''$
 $R = 1,909.86'$
 $T = 532.07'$
 $L = 1,037.78'$
 $E = 72.73'$
 $e = 5.3\%$
 P.C. STA 195+69.58
 P.T. STA 206+07.36
 S.E. ATTAINED STA 194+58 TO 195+58
 S.E. REMOVED STA 205+57.34 TO 206+07.36

CURVE CH5-4-3
 PI STA. = 221+00.00
 $\Delta = 25^{\circ} 00' 00''$ (LT)
 $D = 3^{\circ} 00' 00''$
 $R = 1,909.86'$
 $T = 423.40'$
 $L = 833.33'$
 $E = 46.37'$
 $e = 5.3\%$
 P.C. STA 216+76.60
 P.T. STA 225+09.93
 S.E. ATTAINED STA 215+76.60 TO STA 217+26.60
 S.E. REMOVED STA 224+59.93 TO STA 226+09.93

CURVE CH5-4-4
 PI STA. = 234+57.20
 $\Delta = 38^{\circ} 42' 00''$ (RT)
 $D = 3^{\circ} 00' 00''$
 $R = 1,909.86'$
 $T = 670.70'$
 $L = 1,290.00'$
 $E = 114.34'$
 $e = 5.3\%$
 P.C. STA 227+86.50
 P.T. STA 240+76.50
 S.E. ATTAINED STA 226+86.50 TO STA 228+36.50
 S.E. REMOVED STA 240+26.50 TO STA 106+81.35
 (STA EQN. 240+76.50 BK = 107+81.35 AH)

CL SURVEY & CONSTRUCTION
 COUNTY HIGHWAY 5 (CAMDEN ROAD)

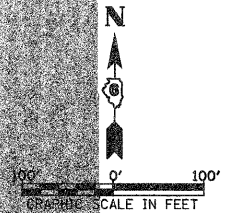
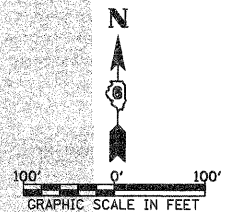
CL SURVEY & CONSTRUCTION
 COUNTY HIGHWAY 5 (CAMDEN ROAD)

STATION EQUATION
 STA 240+76.50 BK =
 107+81.35 AH

CURVE CH5-4-4
 PI STA. = 234+57.20
 $\Delta = 38^{\circ} 42' 00''$ (RT)
 $D = 3^{\circ} 00' 00''$
 $R = 1,909.86'$
 $T = 670.70'$
 $L = 1,290.00'$
 $E = 114.34'$
 $e = 5.3\%$
 P.C. STA 227+86.50
 P.T. STA 240+76.50
 S.E. ATTAINED STA 226+86.50 TO STA 228+36.50
 S.E. REMOVED STA 240+26.50 TO STA 106+81.35
 (STA EQN. 240+76.50 BK = 107+81.35 AH)

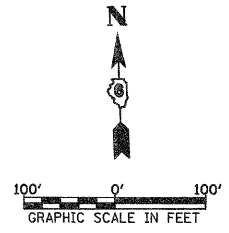
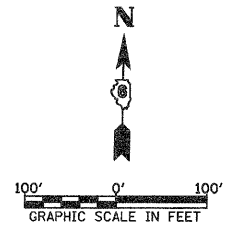
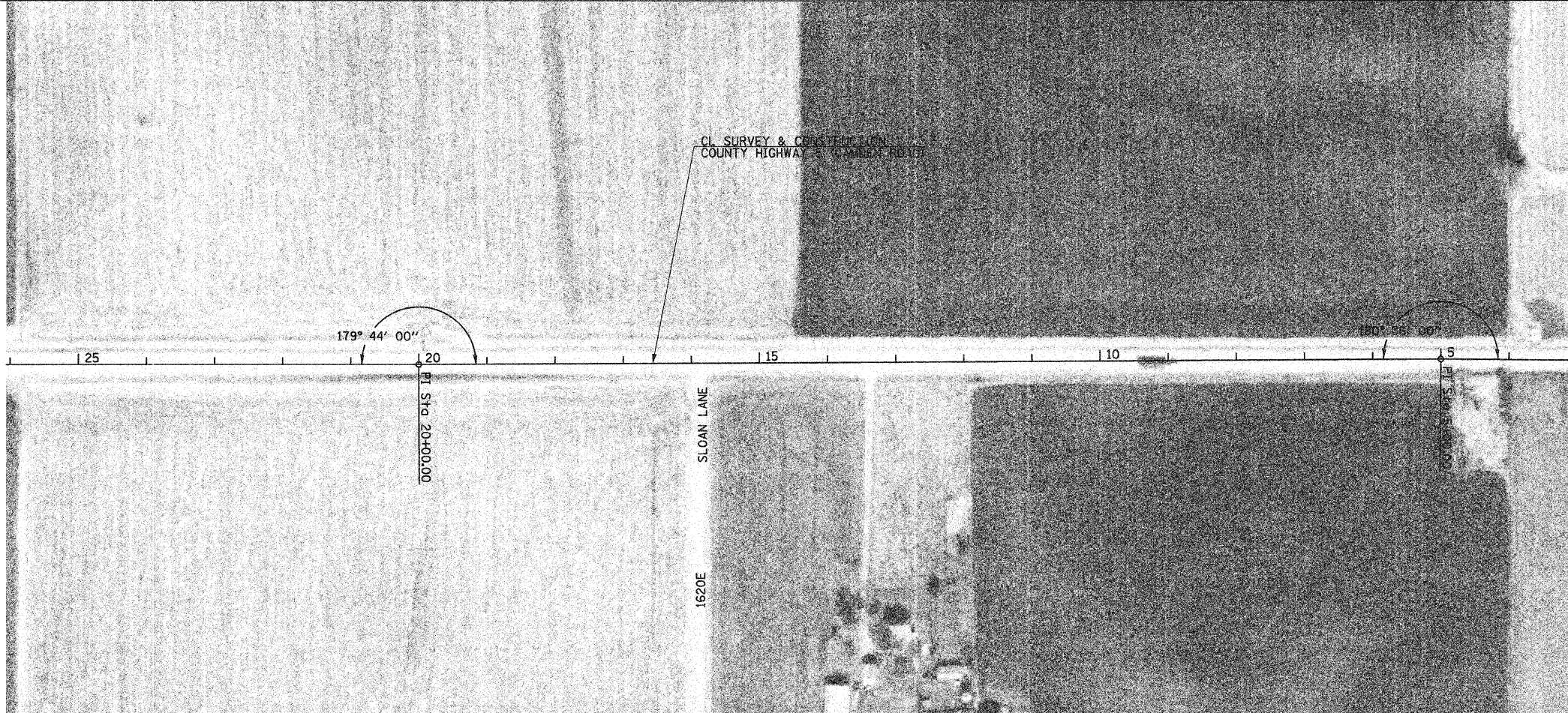
PLOT DATE = 2/1/2009
 FILE NAME = V:\2485\PP7.dgn
 PLOT SCALE = 99.8885' / IN.
 USER NAME = bborngman

F.A. RTE.	SECTION	COUNTY	TOTAL SHEETS	SHEET NO.
	06-00071-00-RS	SCHUYLER	21	14
STA. 86+00		TO STA. 26+00		
FED. ROAD DIST. NO.	ILLINOIS	FED. AID PROJECT		



PLOT DATE = 2/1/2008
 FILE NAME = V:\2485\PP8.dgn
 PLOT SCALE = 9/8.8185 / IN.
 USER NAME = bborghman

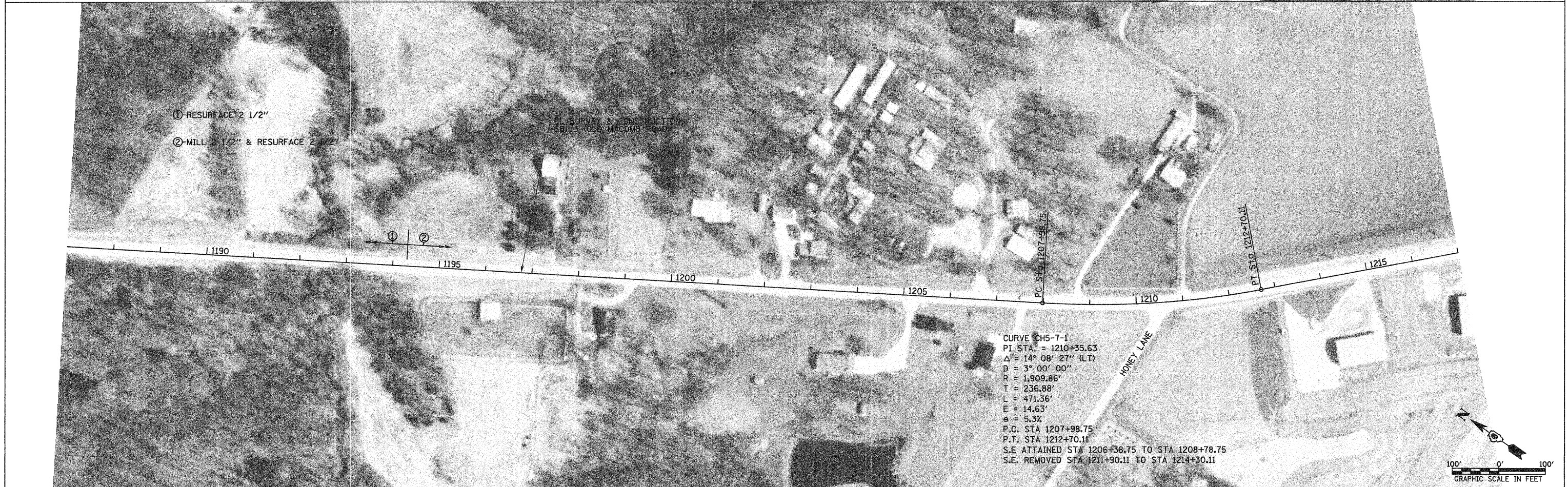
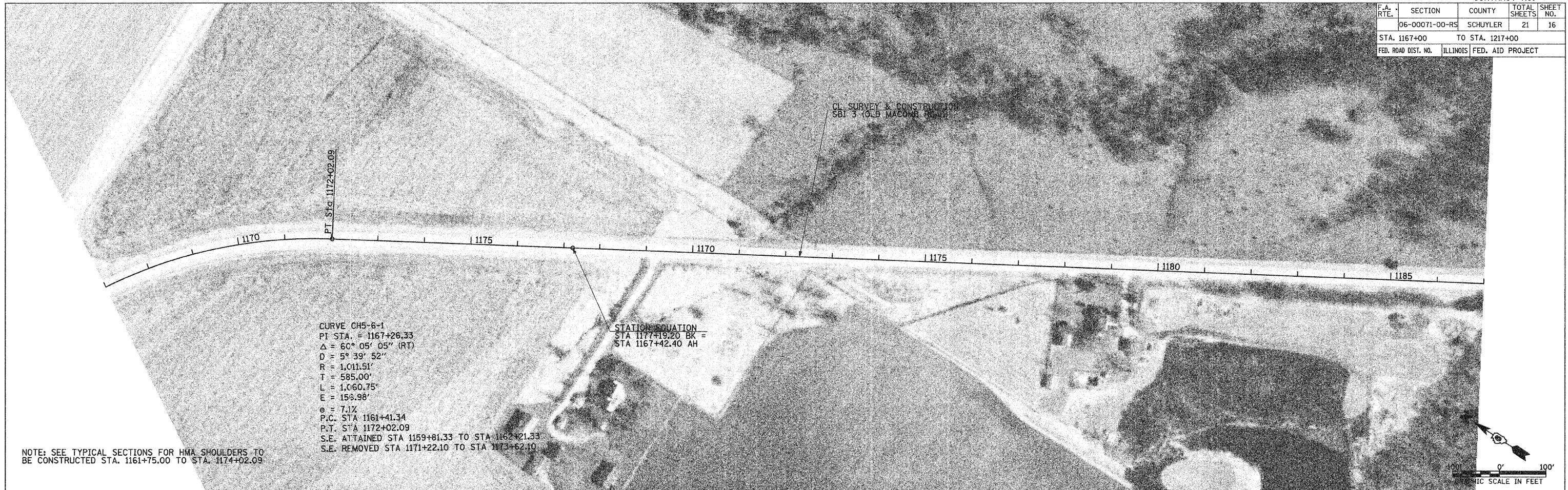
F.A. RTE.	SECTION	COUNTY	TOTAL SHEETS	SHEET NO.
	06-00071-00-RS	SCHUYLER	21	15
STA. 26+00		TO STA. 1167+00		
FED. ROAD DIST. NO.	ILLINOIS	FED. AID PROJECT		



NOTE: SEE TYPICAL SECTIONS FOR HMA SHOULDERS TO BE CONSTRUCTED STA. 1161+75.00 TO STA. 1174+02.09

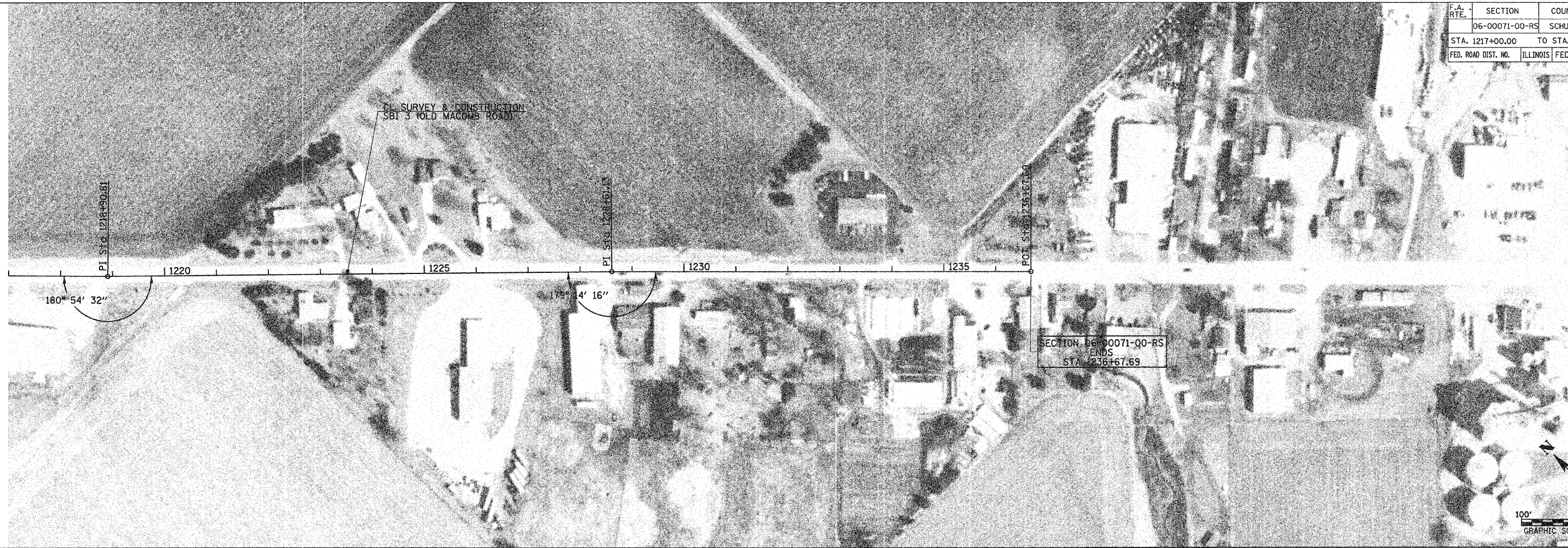
PLOT DATE = 2/1/2009
 FILE NAME = V:\2485\Fp9.dgn
 PLOT SCALE = 99.8185' / IN.
 USER NAME = bborngian

F.A. RTE.	SECTION	COUNTY	TOTAL SHEETS	SHEET NO.
	06-00071-00-RS	SCHUYLER	21	16
STA. 1167+00		TO STA. 1217+00		
FED. ROAD DIST. NO.		ILLINOIS FED. AID PROJECT		




PLOT DATE = 2/1/2008
 FILE NAME = V:\2485\VP10.dgn
 PLOT SCALE = 99.8185' / IN.
 USER NAME = lborgman

F.A. RTE.	SECTION	COUNTY	TOTAL SHEETS	SHEET NO.
	06-00071-00-RS	SCHUYLER	21	17
STA. 1217+00.00		TO STA. 1236+67.69		
FED. ROAD DIST. NO.	ILLINOIS	FED. AID PROJECT		

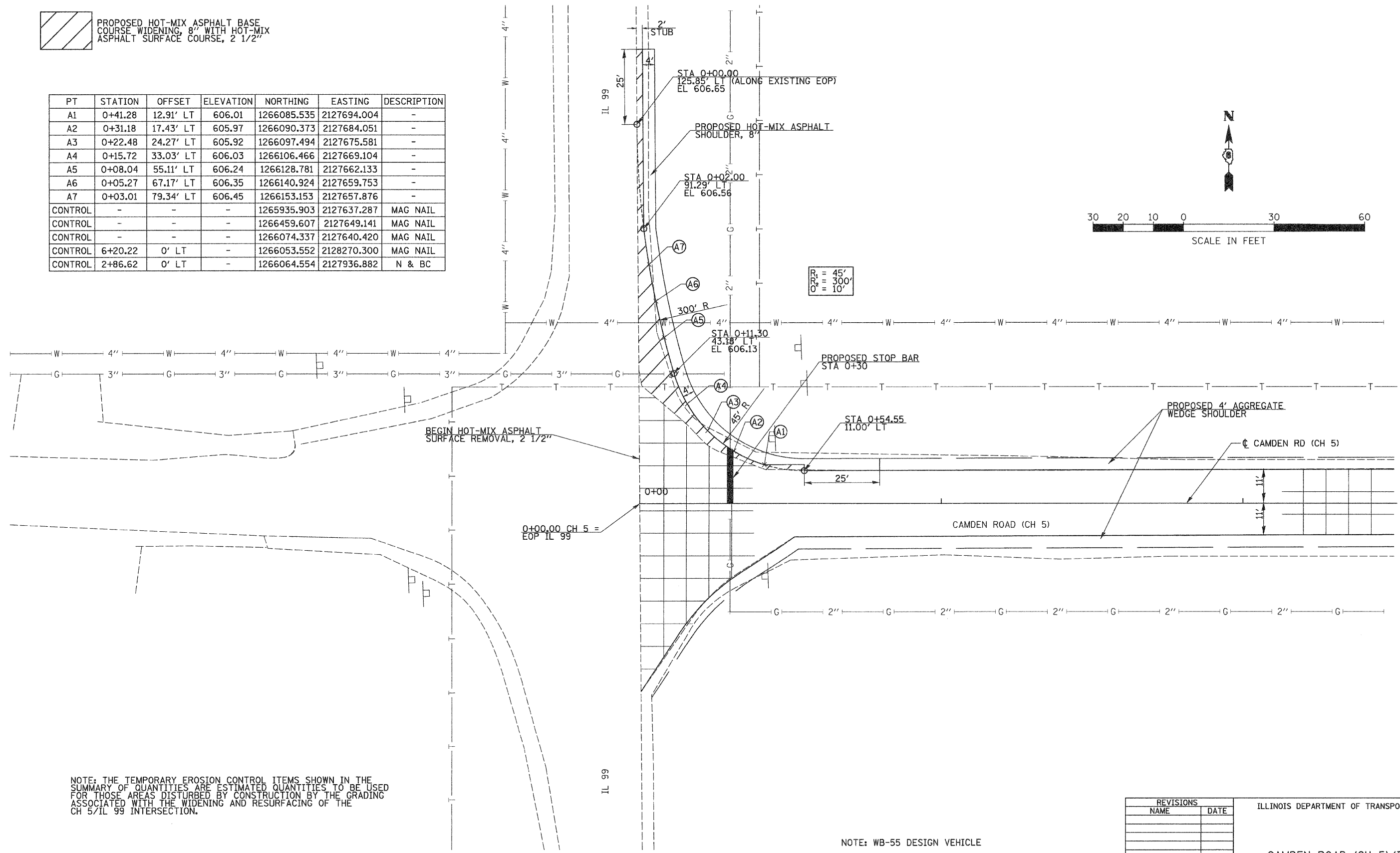
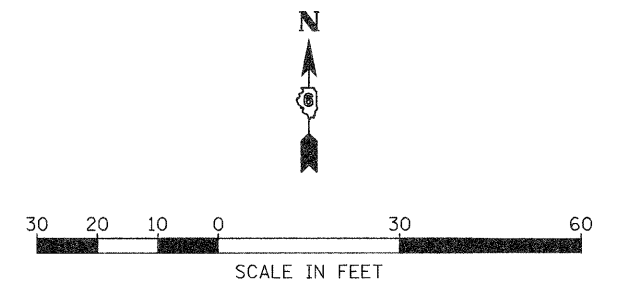


PLOT DATE = 2/1/2008
 FILE NAME = V:\2485\VP11.dgn
 PLOT SCALE = 99.8185' / IN.
 USER NAME = bborghman

F.A.S. RTE.	SECTION	COUNTY	TOTAL SHEETS	SHEET NO.
583	06-00071-00-RS	SCHUYLER	21	18
FED. ROAD DIST. NO.	ILLINOIS	PROJECT NO.	SR-583(112)	

 PROPOSED HOT-MIX ASPHALT BASE COURSE WIDENING, 8" WITH HOT-MIX ASPHALT SURFACE COURSE, 2 1/2"

PT	STATION	OFFSET	ELEVATION	NORTHING	EASTING	DESCRIPTION
A1	0+41.28	12.91' LT	606.01	1266085.535	2127694.004	-
A2	0+31.18	17.43' LT	605.97	1266090.373	2127684.051	-
A3	0+22.48	24.27' LT	605.92	1266097.494	2127675.581	-
A4	0+15.72	33.03' LT	606.03	1266106.466	2127669.104	-
A5	0+08.04	55.11' LT	606.24	1266128.781	2127662.133	-
A6	0+05.27	67.17' LT	606.35	1266140.924	2127659.753	-
A7	0+03.01	79.34' LT	606.45	1266153.153	2127657.876	-
CONTROL	-	-	-	1265935.903	2127637.287	MAG NAIL
CONTROL	-	-	-	1266459.607	2127649.141	MAG NAIL
CONTROL	-	-	-	1266074.337	2127640.420	MAG NAIL
CONTROL	6+20.22	0' LT	-	1266053.552	2128270.300	MAG NAIL
CONTROL	2+86.62	0' LT	-	1266064.554	2127936.882	N & BC



NOTE: THE TEMPORARY EROSION CONTROL ITEMS SHOWN IN THE SUMMARY OF QUANTITIES ARE ESTIMATED QUANTITIES TO BE USED FOR THOSE AREAS DISTURBED BY CONSTRUCTION BY THE GRADING ASSOCIATED WITH THE WIDENING AND RESURFACING OF THE CH 5/IL 99 INTERSECTION.

NOTE: WB-55 DESIGN VEHICLE

REVISIONS	
NAME	DATE

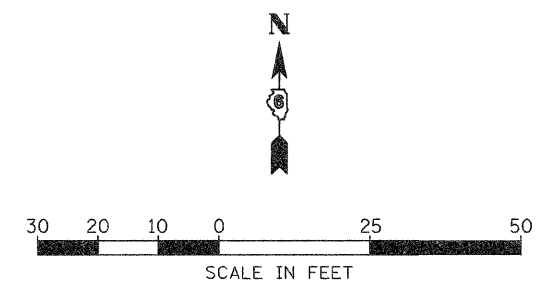
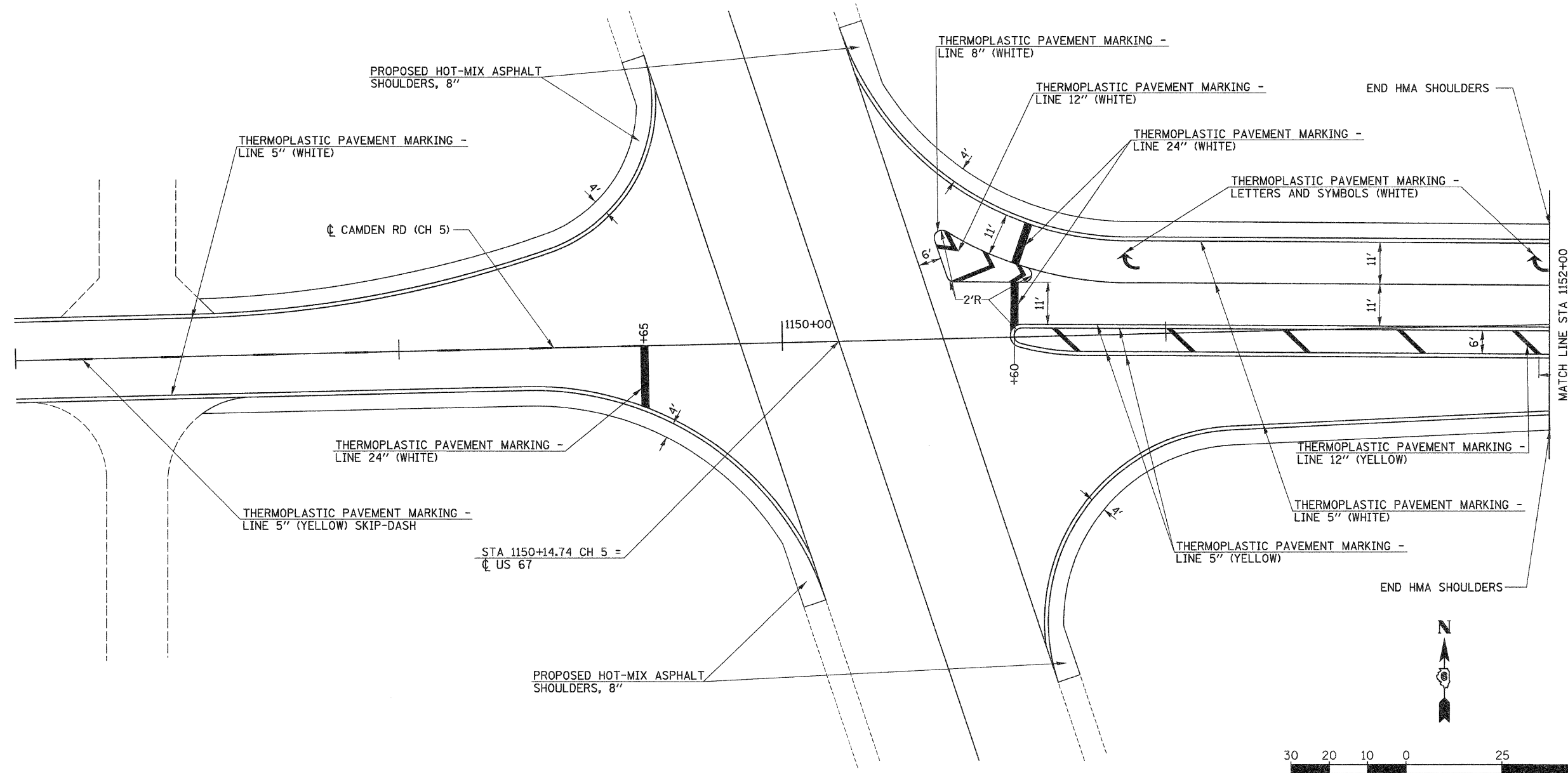
ILLINOIS DEPARTMENT OF TRANSPORTATION

CAMDEN ROAD (CH 5)/IL 99 INTERSECTION DETAILS

DATE: OCTOBER, 2007

DRAWN BY: BMB
CHECKED BY:

F.A.S. RTE.	SECTION	COUNTY	TOTAL SHEETS	SHEET NO.
583	06-00071-00-RS	SCHUYLER	21	19
FED. ROAD DIST. NO.	ILLINOIS	PROJECT NO.	SR-583(112)	



REVISIONS	
NAME	DATE

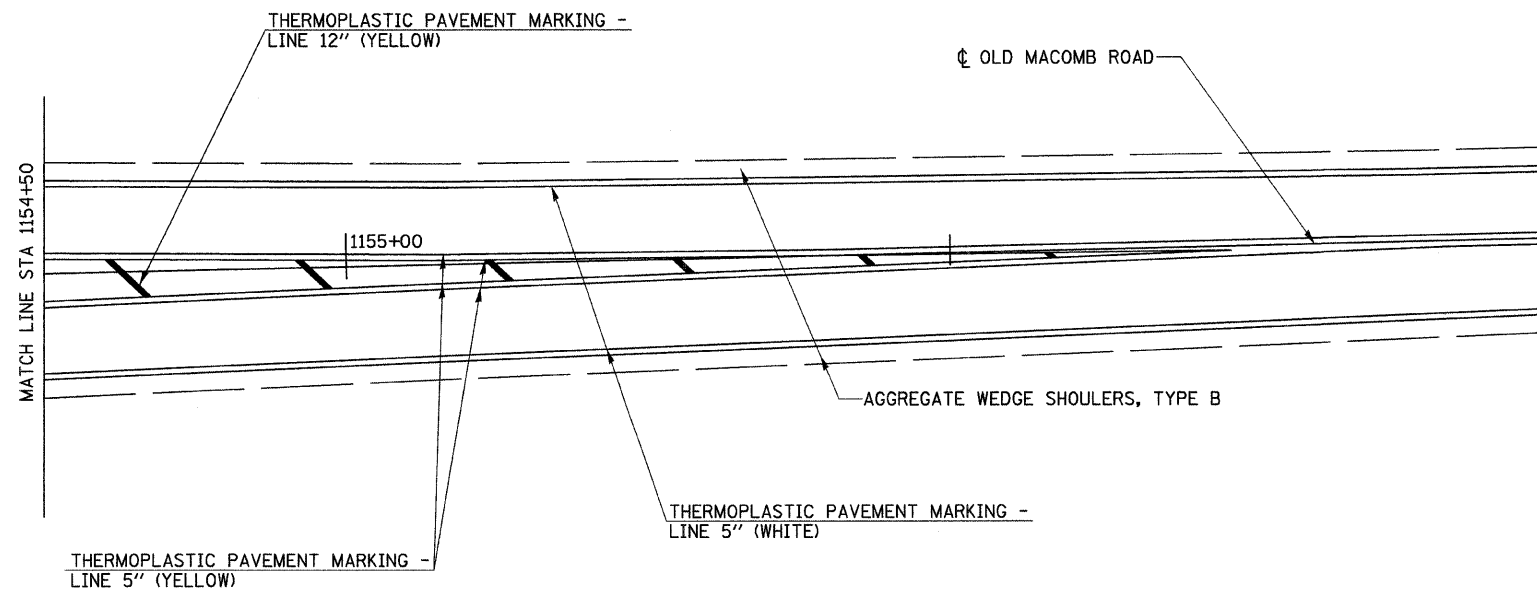
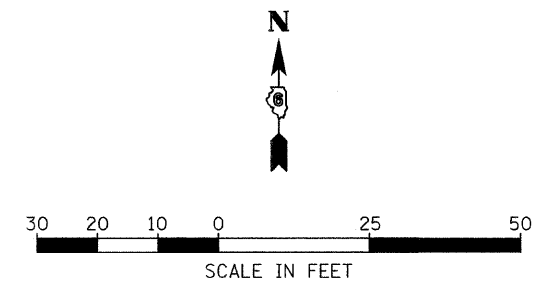
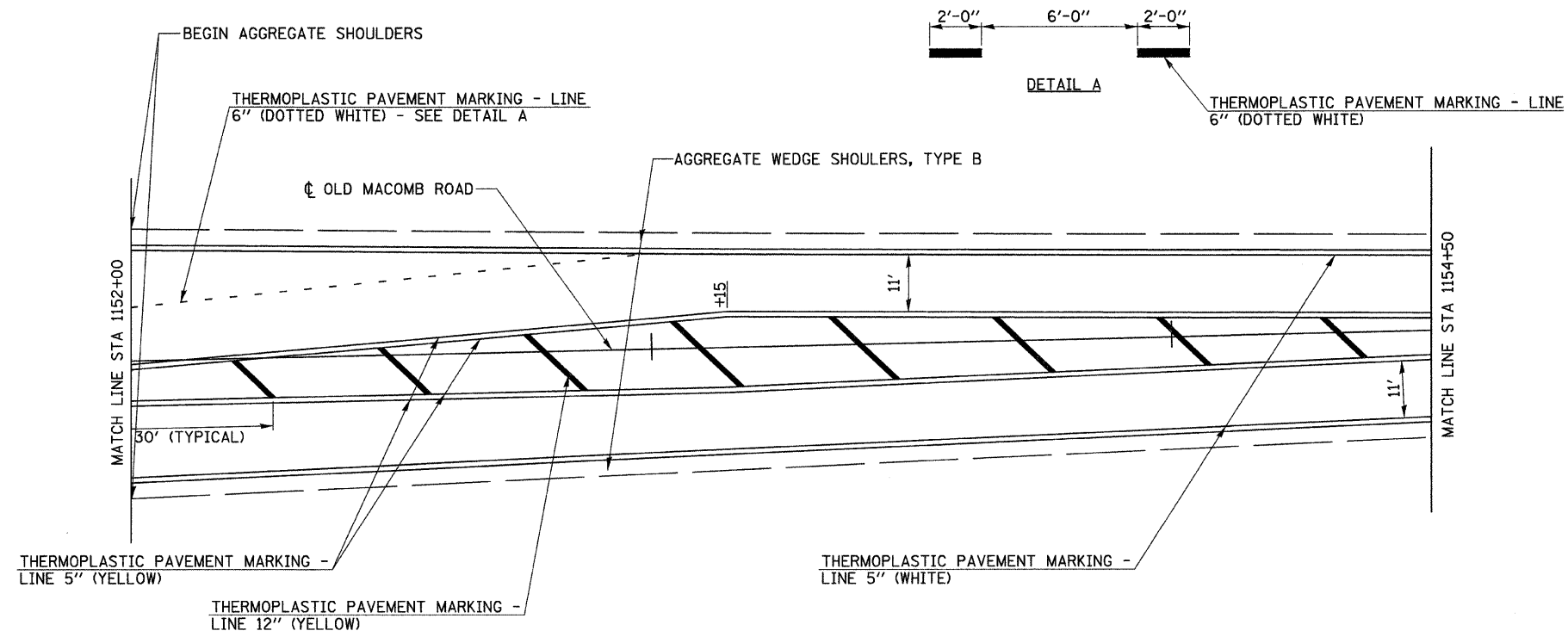
ILLINOIS DEPARTMENT OF TRANSPORTATION

CAMDEN ROAD (CH 5)/US 67 INTERSECTION DETAILS

DATE JANUARY, 2008

DRAWN BY: BMB
CHECKED BY:

F.A.S. RTE.	SECTION	COUNTY	TOTAL SHEETS	SHEET NO.
583	06-00071-00-RS	SCHUYLER	21	20
FED. ROAD DIST. NO.	ILLINOIS	PROJECT NO.	SR-583(112)	



REVISIONS	
NAME	DATE

ILLINOIS DEPARTMENT OF TRANSPORTATION

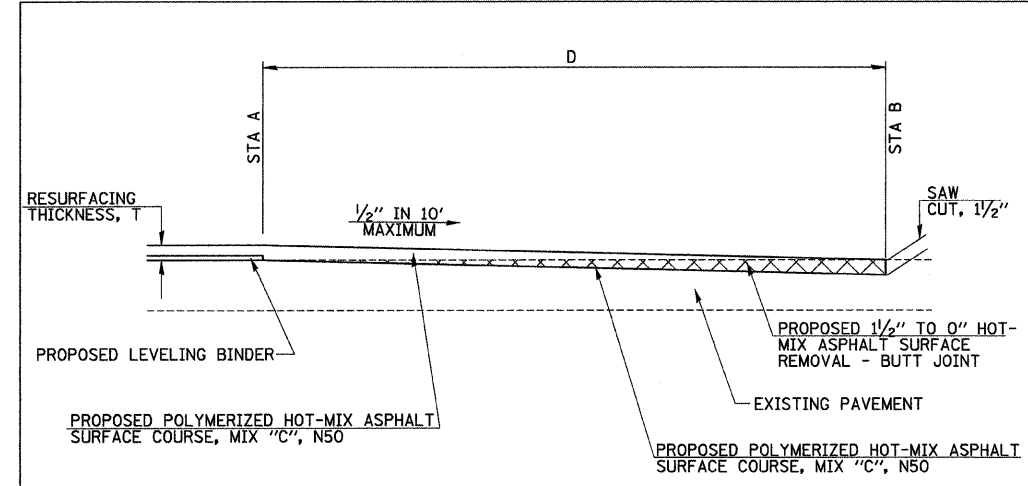
CAMDEN ROAD (CH 5)/US 67
INTERSECTION DETAILS

DATE JANUARY, 2008

DRAWN BY: BMB
CHECKED BY:

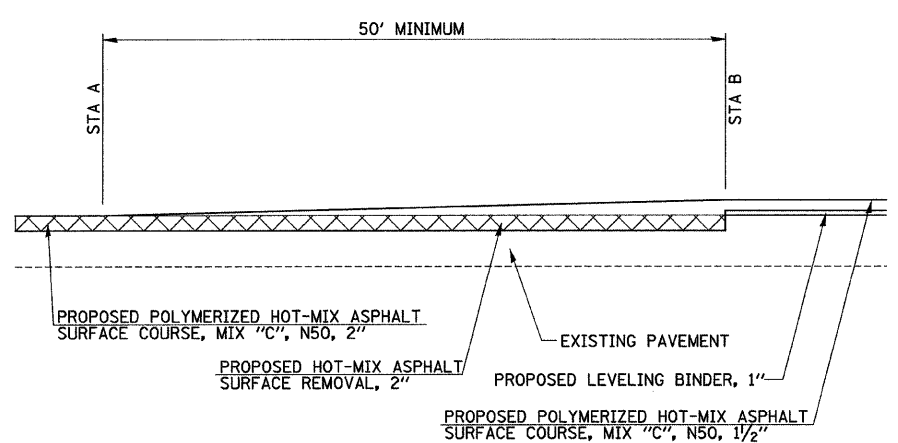
F.A.S. RTE.	SECTION	COUNTY	TOTAL SHEETS	SHEET NO.
583	06-00071-00-RS	SCHUYLER	21	21
FED. ROAD DIST. NO.	ILLINOIS	PROJECT NO.	SR-582(115)	

CONTRACT NO.

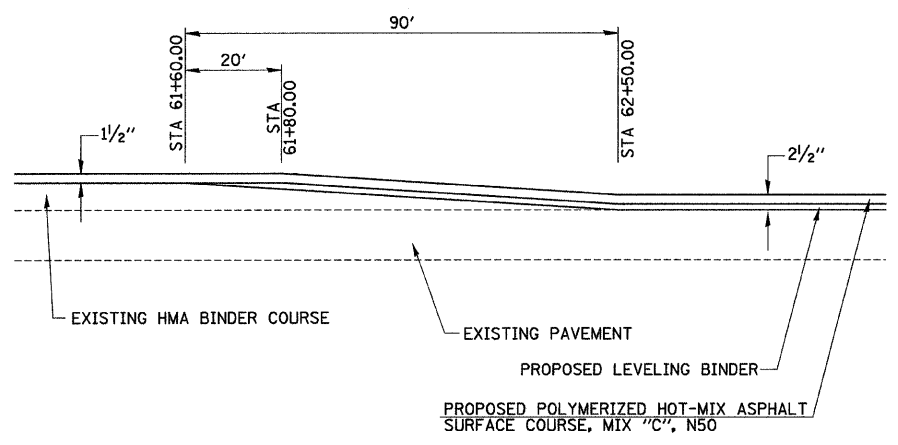


STA A	STA B	D	T
45+91.10	46+41.10	50	2 1/2"
48+80.00	49+10.00	30	1 1/2"
52+38.00	52+68.00	30	1 1/2"
57+23.50	57+53.50	30	1 1/2"
1149+39.00	1149+89.00	50	2 1/2"
1150+92.00	1150+42.00	50	2 1/2"

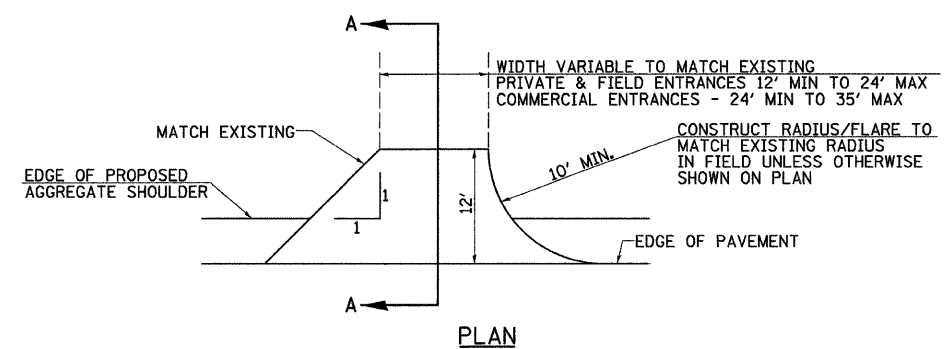
BUTT JOINT DETAIL



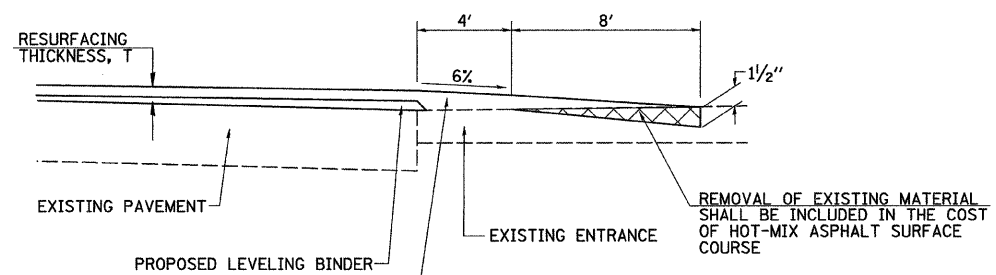
STA A	STA B
12+50.00	13+00.00
1194+70.00	1194+20.00



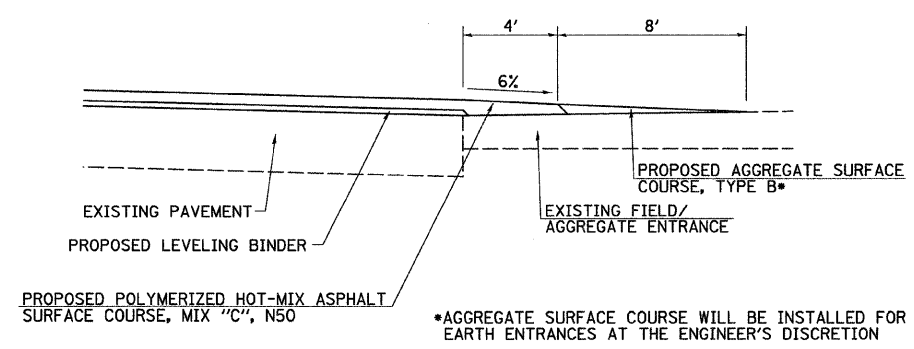
HMA TAPER DETAILS



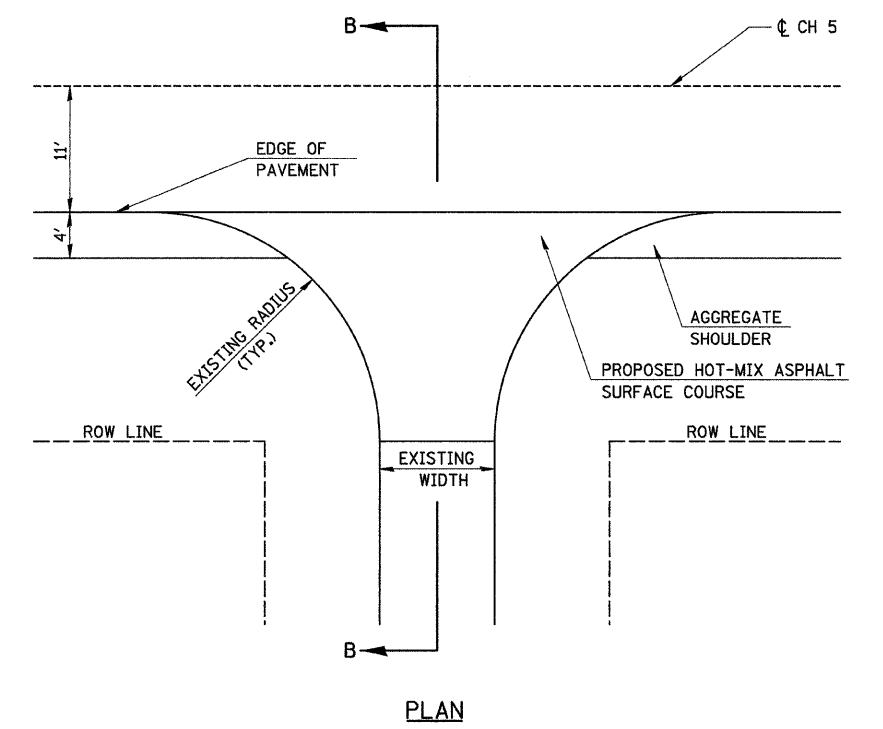
PLAN



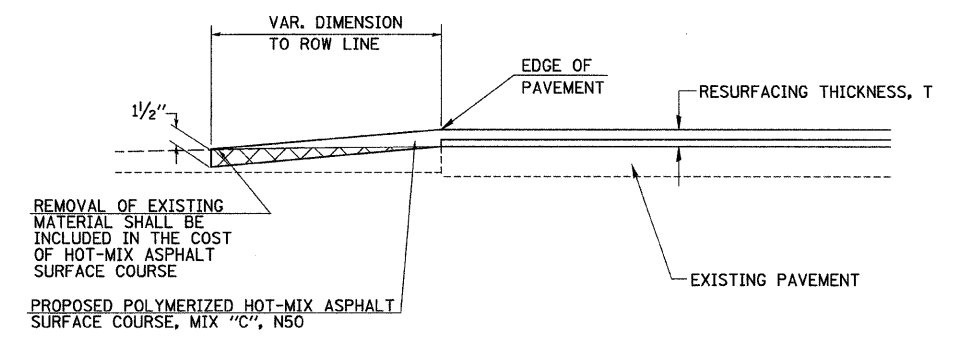
**SECTION A-A
HOT-MIX ASPHALT ENTRANCES**



**SECTION A-A
AGGREGATE/EARTH ENTRANCES
ENTRANCE TAPERS**



PLAN



**SECTION B-B
PROPOSED SIDEWALK TAPER**

SIDEROAD DETAIL

REVISIONS	
NAME	DATE

SPECIAL DETAILS

DATE JANUARY, 2008
DRAWN BY:
CHECKED BY: