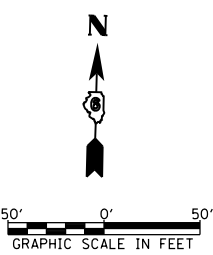
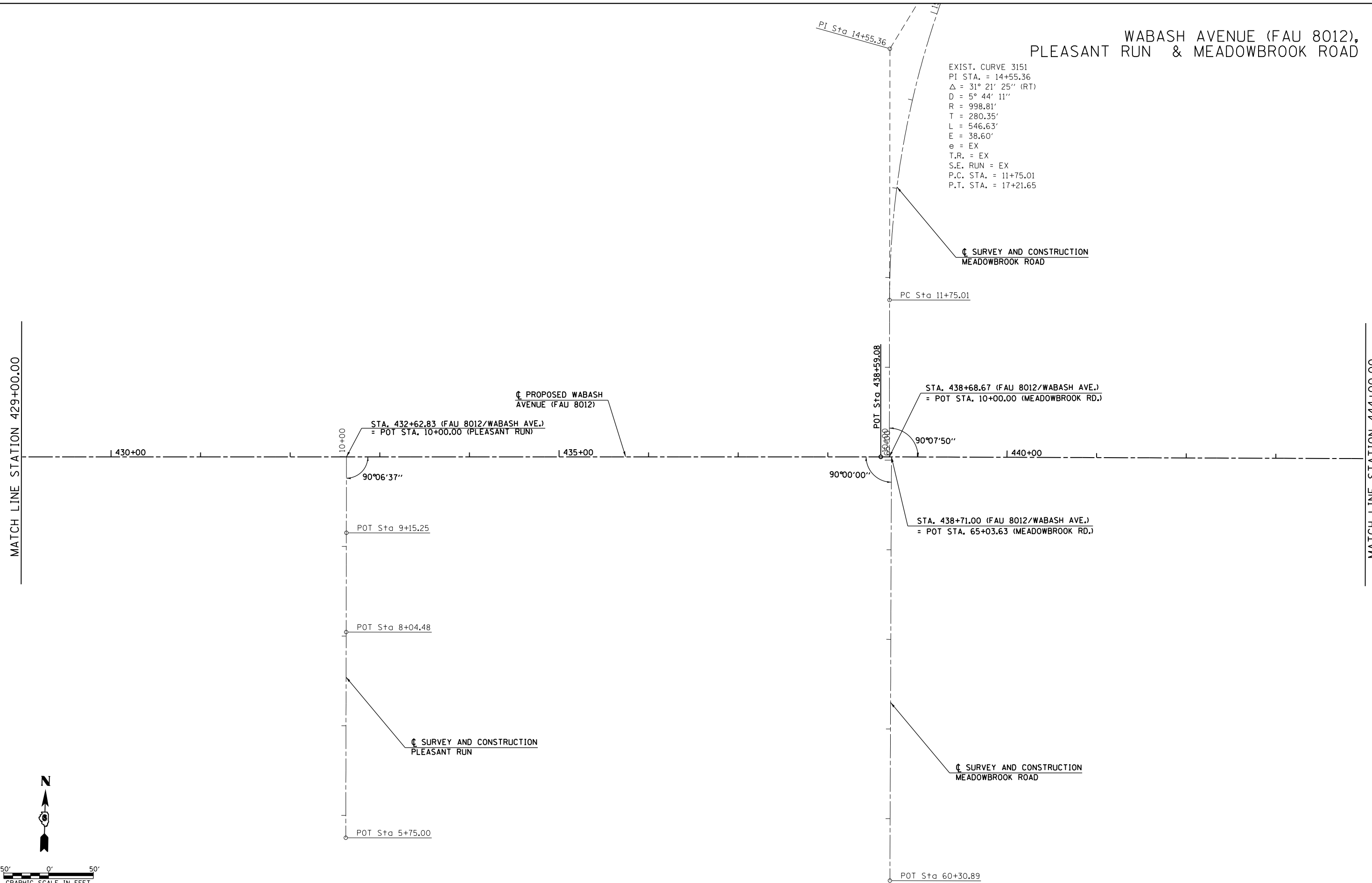


WABASH AVENUE (FAU 8012),  
PLEASANT RUN & MEADOWBROOK ROAD

EXIST. CURVE 3151  
 PI STA. = 14+55.36  
 $\Delta = 31^\circ 21' 25''$  (RT)  
 D = 5° 44' 11"  
 R = 998.81'  
 T = 280.35'  
 L = 546.63'  
 E = 38.60'  
 e = EX  
 T.R. = EX  
 S.E. RUN = EX  
 P.C. STA. = 11+75.01  
 P.T. STA. = 17+21.65

MATCH LINE STATION 429+00.00

MATCH LINE STATION 444+00.00



FILE NAME =	USER NAME = sparksgw	DESIGNED - AWM	REVISED -
c:\pwwork\pwwork\sparksgw\10373645\0672890-shr-ATB-Wabash09.dgn		DRAWN - JCW	REVISED -
		CHECKED - AWM	REVISED -
		DATE - 12/04/2013	REVISED -

**STATE OF ILLINOIS  
DEPARTMENT OF TRANSPORTATION**

**ALIGNMENT LAYOUT WABASH AVENUE (FAU 8012)  
STATION 429+00 TO STATION 444+00**

SCALE: 1=50      SHEET NO.    OF    SHEETS    STA. 429+00.00 TO STA. 444+00.00

F.A.U. RTE.	SECTION	COUNTY	TOTAL SHEETS	SHEET NO.
8012	21(W-3, TS-1, RS-7)	SANGAMON	679	99
CONTRACT NO. 72890			ILLINOIS FED. AID PROJECT	