

STELLE DEVELOPMENT, L.L.C.
 PARCEL NO. 6134107

PIPE CULVERTS, CLASS A, TYPE 1
 2 - 24"x90" W/ PRECAST REINFORCED CONCRETE
 END SECTIONS - 4 EACH.
 USFL=611.81, STA 382+50.00 - 77.3' LT & 81.83' LT
 DSFL=611.59, STA 383+40.00 - 77.3' LT & 81.83' LT
 TRENCH BACKFILL, 38-CU YD

PIPE CULVERTS, CLASS A, TYPE 1
 2 - 30"x136" W/ PRECAST REINFORCED CONCRETE
 END SECTIONS - 4 EACH.
 USFL=611.49, STA 383+82.21 & 383+87.79 - 73.8' LT
 DSFL=610.45, STA 383+82.21 & 383+87.79 - 61.9' RT
 CLSM, 132-CU YD

STA. 383+19.67 (FAU 8012/WABASH AVE.)
 = STA. 19+87.16 (I-72 WESTBOUND ON RAMP)

2 CENTERED CURVE
 60' - 250'
 OFFSET = 12.00'

LIMIT OF CONSTRUCTION (TYP.)

STA. 383+63.19
 58.50' LT

EXISTING ROW LINE

PROPOSED HOT-MIX
 ASPHALT SHOULDER, 8"

PROPOSED COMBINATION CONCRETE
 CURB AND GUTTER, TYPE M-6.06

STA 385+41.10
 2' STUB, 14.50' LT

PROPOSED CONCRETE
 MEDIAN SURFACE, 4 INCH

STA. 382+89.13 (FAU 8012/WABASH AVE.)
 = STA. 19+87.16 (I-72 WESTBOUND OFF RAMP)

FILLING EXISTING
 CULVERTS, 9.7 CU YD

PROPOSED HOT-MIX
 ASPHALT SHOULDER, 8"

STA 385+50.13
 36.00' RT

CONCRETE HEADWALL REMOVAL, 1-EACH
 PIPE CULVERT REMOVAL, 24"x18.1'

PIPE CULVERTS, CLASS A, TYPE 1
 36"x108" W/ PRECAST REINFORCED CONCRETE
 END SECTIONS - 2 EACH.
 USFL=611.34, STA 382+62.5 - 63.4' RT
 DSFL=610.40, STA 383+69.0 - 73.5' RT
 TRENCH BACKFILL, 25-CU YD

STA 383+91.15
 36.00' RT

STA 384+14.00
 75.00' RT

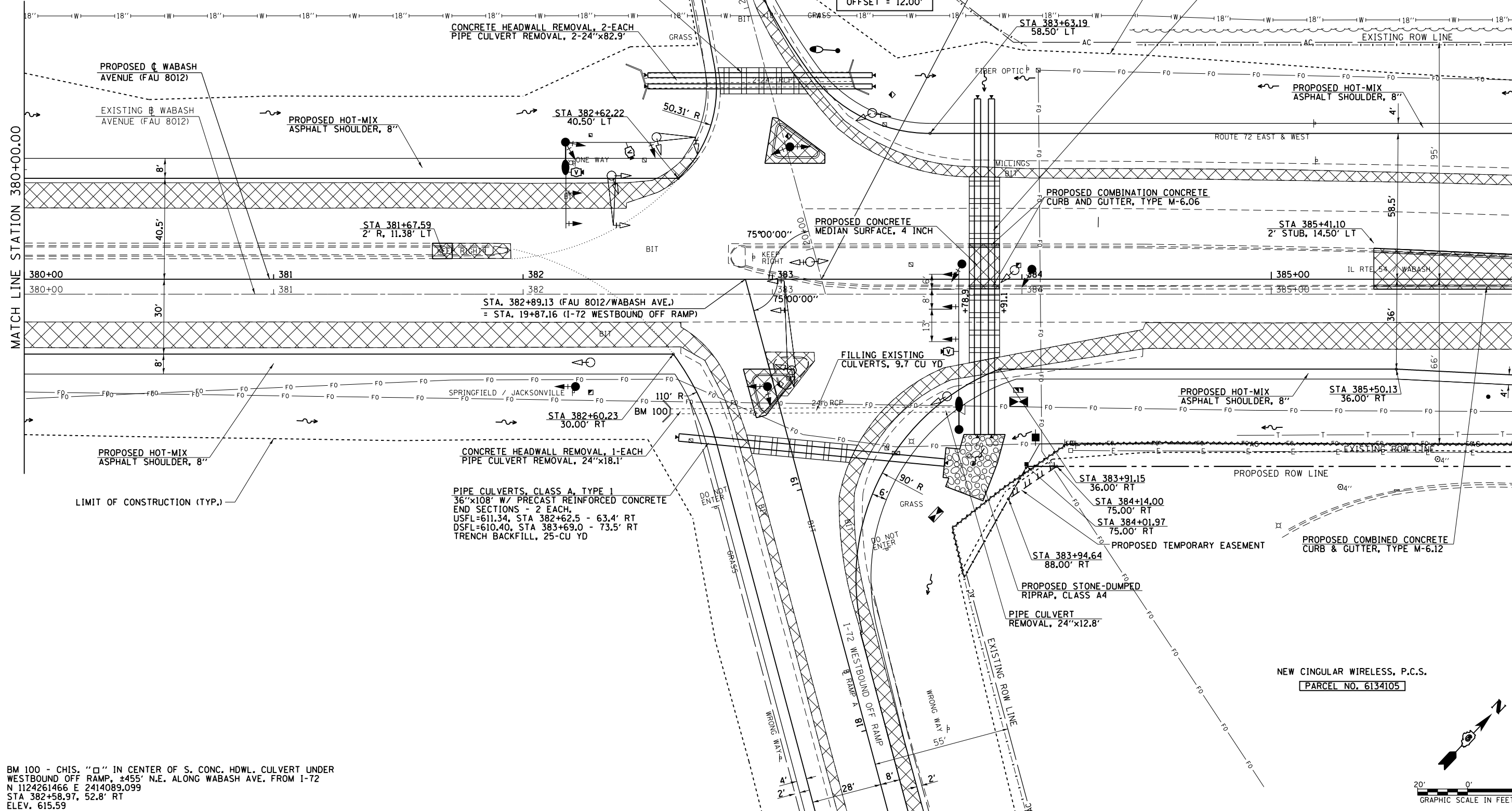
STA 384+01.97
 75.00' RT

STA 383+94.64
 88.00' RT

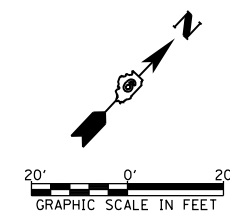
PROPOSED STONE-DUMPED
 RIPRAP, CLASS A4

PIPE CULVERT
 REMOVAL, 24"x12.8'

NEW CINGULAR WIRELESS, P.C.S.
 PARCEL NO. 6134105



BM 100 - CHIS. "□" IN CENTER OF S. CONC. HDWL. CULVERT UNDER
 WESTBOUND OFF RAMP, ±455' N.E. ALONG WABASH AVE. FROM I-72
 N 1124261466 E 2414089,099
 STA 382+58.97, 52.8' RT
 ELEV. 615.59



FILE NAME =	USER NAME = sparksgw	DESIGNED -	AWM	REVISED -	
et:\pwork\pwork\sparksgw\10373645\0672890-sht-plan-Wabash10.dgn		DRAWN -	JCW	REVISED -	
		CHECKED -	AWM	REVISED -	
		DATE -	12/04/2013	REVISED -	

STATE OF ILLINOIS
 DEPARTMENT OF TRANSPORTATION

WABASH AVENUE
 PLAN VIEW

SCALE: 1:20 SHEET NO. OF SHEETS STA. 380+00.00 TO STA. 386+00.00

F.A.U. R.T.E.	SECTION	COUNTY	TOTAL SHEETS	SHEET NO.
8012	21(W-3, TS-1, RS-7)	SANGAMON	679	123
CONTRACT NO. 72890			ILLINOIS FED. AID PROJECT	