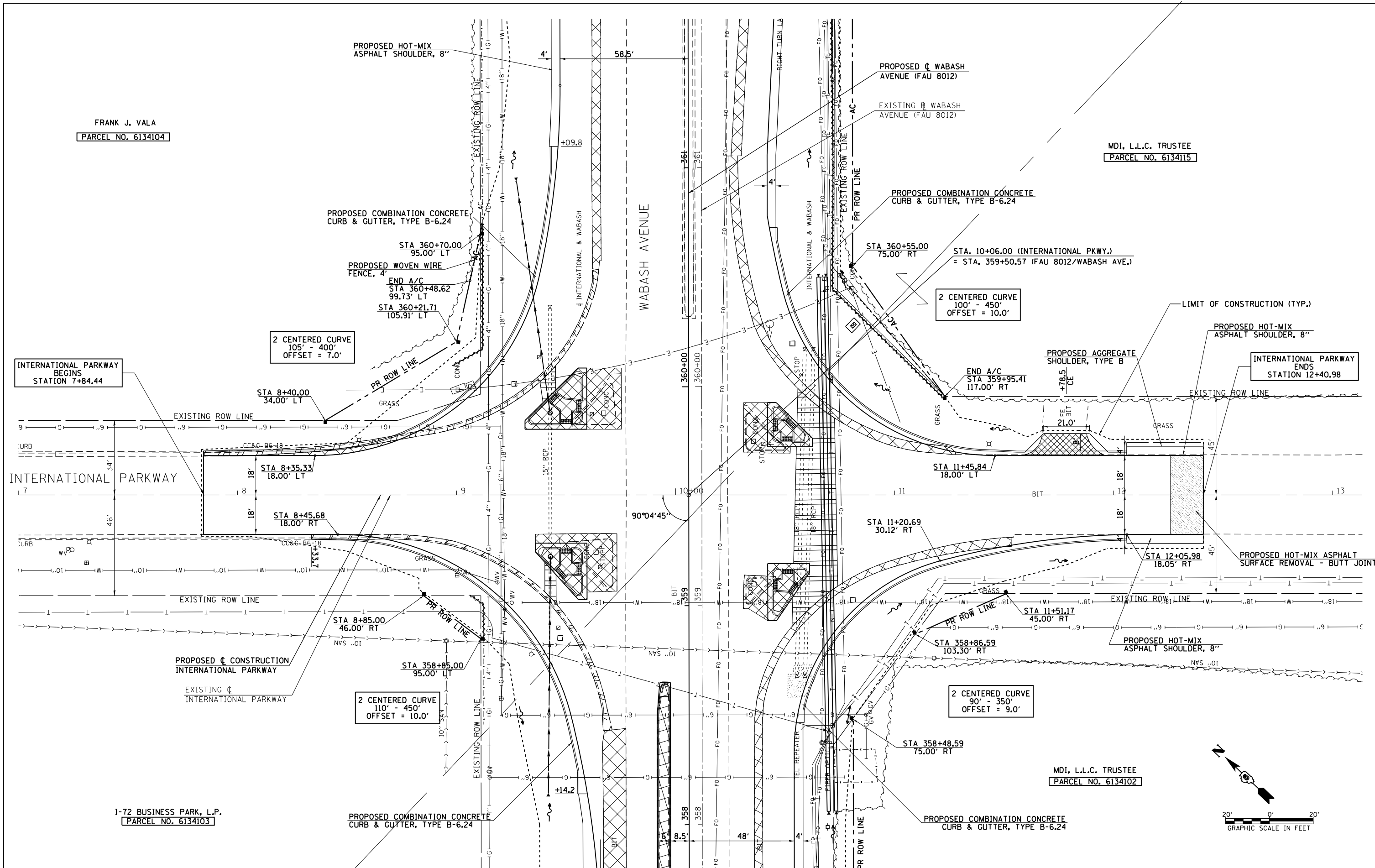


FRANK J. VALA

PARCEL NO. 6134104

MDI, L.L.C. TRUSTEE  
PARCEL NO. 6134115

I-72 BUSINESS PARK, L.P.  
PARCEL NO. 6134103



FILE NAME =	USER NAME = edwardsjd	DESIGNED - SEW	REVISED - 03/20/2014
ct:\pwork\pwork\edwardsjd\0373645\062890-sh-t-plan-IntlParkway.dgn		DRAWN - AS	REVISED -
PLOT SCALE = 40.0000' / in.		CHECKED - SEW	REVISED -
PLOT DATE = Mar-21-2014 02:06:49PM		DATE - 12/04/2013	REVISED -

STATE OF ILLINOIS  
DEPARTMENT OF TRANSPORTATION

INTERNATIONAL PARKWAY  
PLAN SHEET

SCALE: 1"=20' SHEET NO. 1 OF 1 SHEETS STA. 7+84.44 TO STA. 12+05.98

F.A.U. RTE.	SECTION	COUNTY	TOTAL SHEETS	SHEET NO.
8012	21(W-3,TS-1,RS-7)	SANGAMON	679	179
CONTRACT NO. 72890				
ILLINOIS FED. AID PROJECT				