

HERMES BROTHERS FARMS, INC.
 PARCEL NO. 6134108

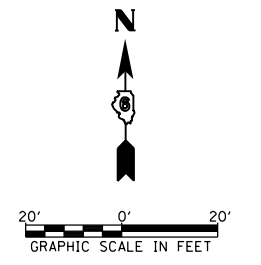
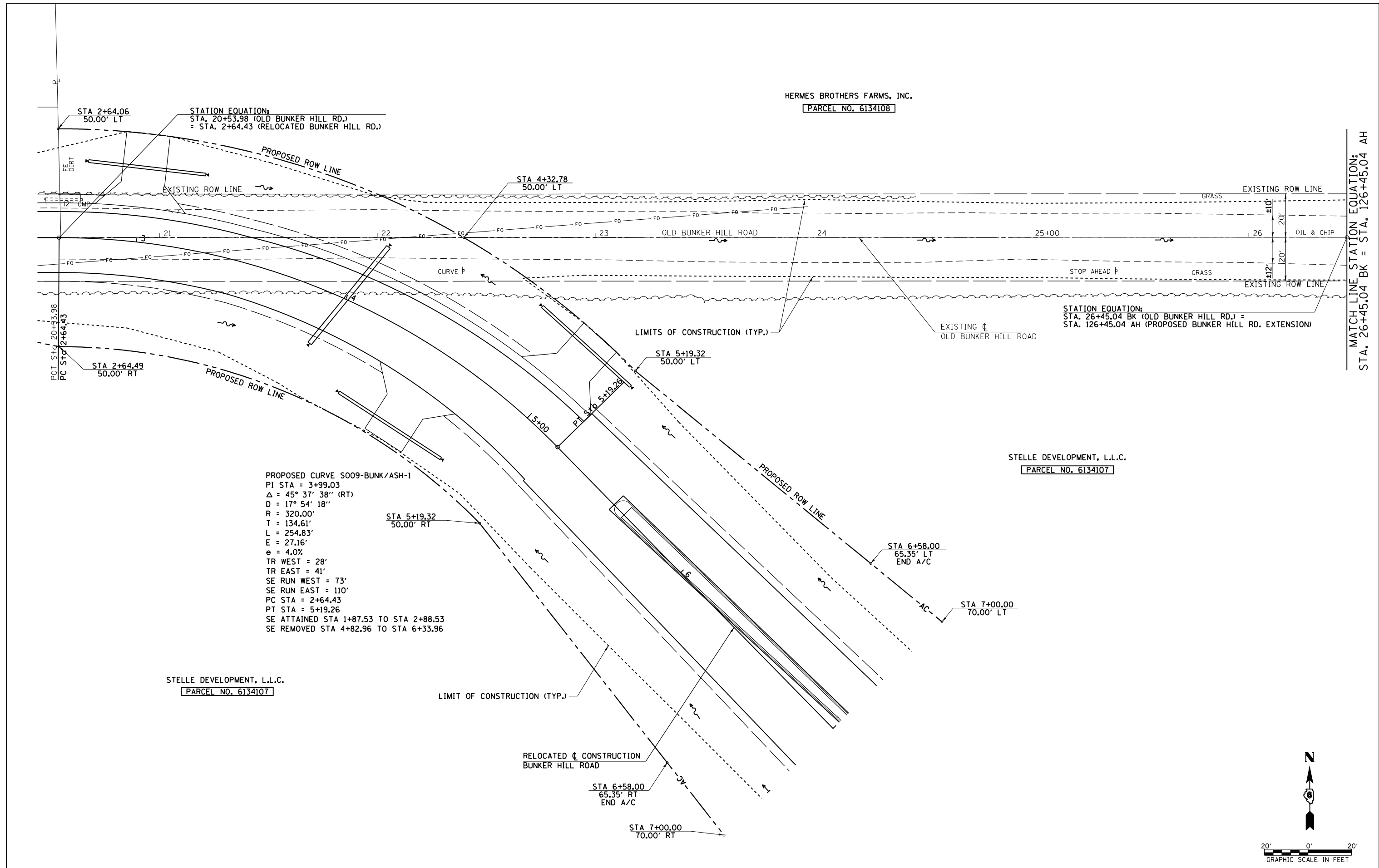
STELLE DEVELOPMENT, L.L.C.
 PARCEL NO. 6134107

STELLE DEVELOPMENT, L.L.C.
 PARCEL NO. 6134107

PROPOSED CURVE S009-BUNK/ASH-1
 PI STA = 3+99.03
 $\Delta = 45^\circ 37' 38''$ (RT)
 D = 17° 54' 18"
 R = 320.00'
 T = 134.61'
 L = 254.83'
 E = 27.16'
 e = 4.0%
 TR WEST = 28'
 TR EAST = 41'
 SE RUN WEST = 73'
 SE RUN EAST = 110'
 PC STA = 2+64.43
 PT STA = 5+19.26
 SE ATTAINED STA 1+87.53 TO STA 2+88.53
 SE REMOVED STA 4+82.96 TO STA 6+33.96

STATION EQUATION:
 STA. 26+45.04 BK (OLD BUNKER HILL RD.) =
 STA. 126+45.04 AH (PROPOSED BUNKER HILL RD. EXTENSION)

MATCH LINE STATION EQUATION:
 STA. 26+45.04 BK = STA. 126+45.04 AH



FILE NAME =	USER NAME = sparksgw	DESIGNED - AWM	REVISED -	STATE OF ILLINOIS DEPARTMENT OF TRANSPORTATION	OLD BUNKER HILL ROAD PLAN VIEW			F.A.U. RTE.	SECTION	COUNTY	TOTAL SHEETS	SHEET NO.
et:\pw\work\p\idot\sparksgw\10373645\10672890-sht-plan-OldBunkerHillRd01.dgn		DRAWN - JCW	REVISED -		SCALE: 1=20	SHEET NO.	OF SHEETS	STA. 20+45.04 TO STA. 26+45.04	21(W-3, TS-1, RS-7)	SANGAMON	679	195
		CHECKED - AWM	REVISED -									
		DATE - 12/04/2013	REVISED -									

CONTRACT NO. 72890
ILLINOIS FED. AID PROJECT