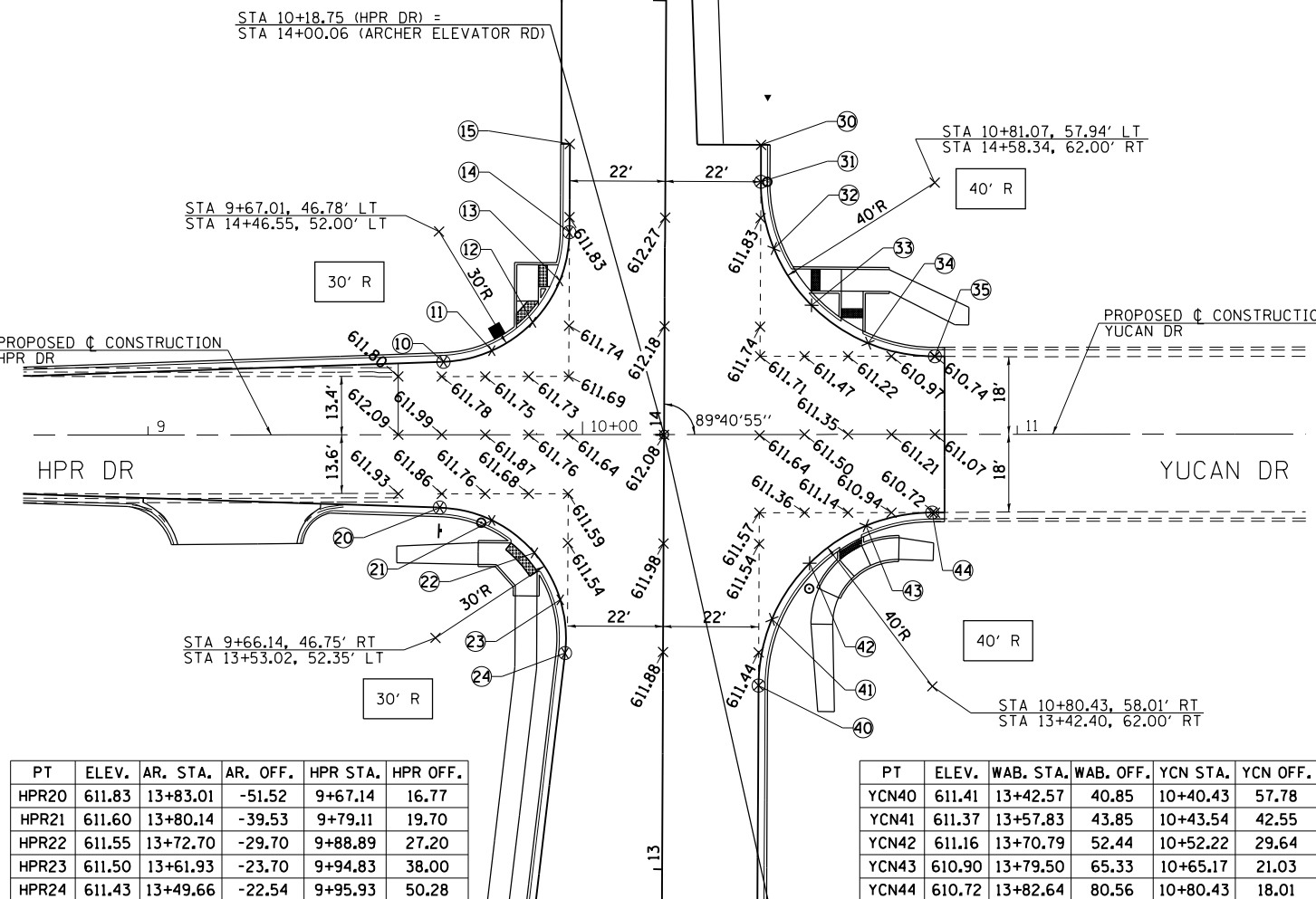


PT	ELEV.	AR. STA.	AR. OFF.	HPR STA.	HPR OFF.
HPR10	611.72	14+16.58	-50.83	9+68.01	-16.80
HPR11	611.57	14+19.18	-39.71	9+79.14	-19.34
HPR12	611.58	14+25.76	-30.38	9+88.51	-25.86
HPR13	611.71	14+35.34	-24.17	9+94.77	-35.42
HPR14	611.81	14+46.55	-22.00	9+97.01	-46.61
HPR15	611.87	14+66.85	-22.00	9+97.12	-66.91

PT	ELEV.	WAB. STA.	WAB. OFF.	YCN STA.	YCN OFF.
YCN30	611.87	14+67.02	40.64	10+41.12	-66.67
YCN31	611.85	14+58.51	40.65	10+41.07	-58.16
YCN32	611.67	14+43.16	43.74	10+44.05	-42.78
YCN33	611.31	14+30.17	52.49	10+52.71	-29.73
YCN34	610.95	14+21.54	65.56	10+65.71	-21.00
YCN35	610.74	14+18.58	80.94	10+81.07	-17.94



PT	ELEV.	AR. STA.	AR. OFF.	HPR STA.	HPR OFF.
HPR20	611.83	13+83.01	-51.52	9+67.14	16.77
HPR21	611.60	13+80.14	-39.53	9+79.11	19.70
HPR22	611.55	13+72.70	-29.70	9+88.89	27.20
HPR23	611.50	13+61.93	-23.70	9+94.83	38.00
HPR24	611.43	13+49.66	-22.54	9+95.93	50.28

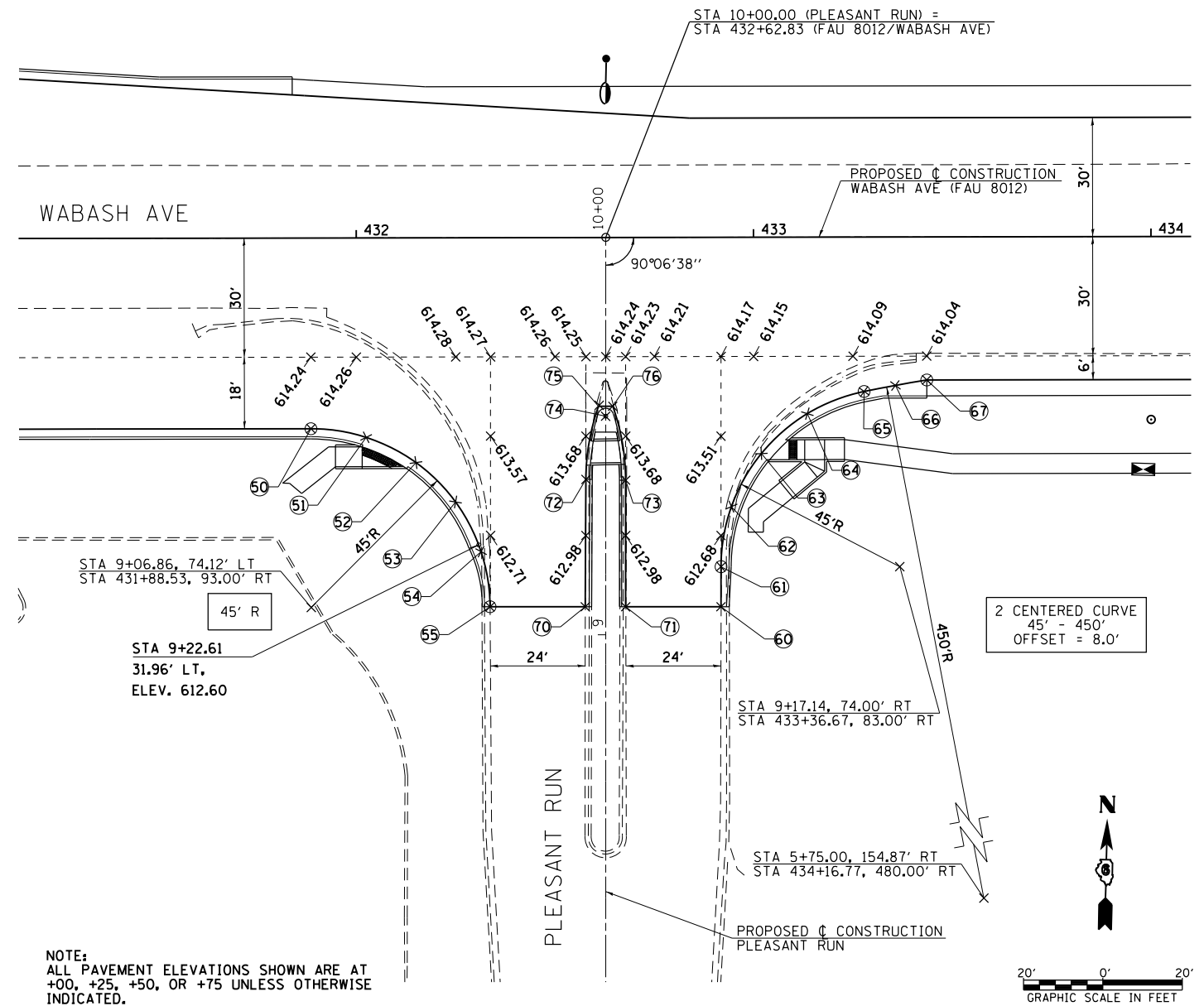
PT	ELEV.	WAB. STA.	WAB. OFF.	YCN STA.	YCN OFF.
YCN40	611.41	13+42.57	40.85	10+40.43	57.78
YCN41	611.37	13+57.83	43.85	10+43.54	42.55
YCN42	611.16	13+70.79	52.44	10+52.22	29.64
YCN43	610.90	13+79.50	65.33	10+65.17	21.03
YCN44	610.72	13+82.64	80.56	10+80.43	18.01

NOTE:
ALL PAVEMENT ELEVATIONS SHOWN ARE AT +00, +25, +50, OR +75 UNLESS OTHERWISE INDICATED.

PT	ELEV.	WAB. STA.	WAB. OFF.	P.RUN STA.	P.RUN OFF.
PRUN50	613.79	431+88.53	48.00	9+51.86	-74.21
PRUN51	613.69	432+02.42	50.20	9+49.69	-60.32
PRUN52	613.40	432+14.95	56.57	9+43.34	-47.77
PRUN53	612.99	432+24.90	66.50	9+33.43	-37.80
PRUN54	612.54	432+31.31	79.02	9+20.92	-31.37
PRUN55	612.09	432+33.53	92.90	9+07.05	-29.12

PT	ELEV.	WAB. STA.	WAB. OFF.	P.RUN STA.	P.RUN OFF.
PRUN60	612.09	432+91.65	93.01	9+07.05	29.00
PRUN61	612.42	432+91.67	82.91	9+17.14	29.00
PRUN62	612.89	432+94.31	67.81	9+32.25	31.61
PRUN63	613.29	433+01.88	54.47	9+45.61	39.15
PRUN64	613.59	433+13.48	44.44	9+55.66	50.73
PRUN65	613.80	433+27.77	38.89	9+61.24	65.01
PRUN66	613.86	433+35.64	37.37	9+62.77	72.88
PRUN67	613.89	433+43.53	36.00	9+64.16	80.77

PT	ELEV.	WAB. STA.	WAB. OFF.	P.RUN STA.	P.RUN OFF.
PRUN70	612.48	432+57.51	92.94	9+07.05	-5.15
PRUN71	612.48	432+67.65	92.96	9+07.05	5.00
PRUN72	613.37	432+57.71	60.89	9+39.10	-5.00
PRUN73	613.37	432+67.71	61.11	9+38.90	5.00
PRUN74	N/A	432+62.71	44.99	9+55.01	-0.03
PRUN75	613.89	432+60.92	42.49	9+57.51	-1.83
PRUN76	613.89	432+64.51	42.50	9+57.51	1.76



NOTE:
ALL PAVEMENT ELEVATIONS SHOWN ARE AT +00, +25, +50, OR +75 UNLESS OTHERWISE INDICATED.

FILE NAME =	USER NAME = edwardsjd	DESIGNED - AWM	REVISED - 03/21/2014
ct:\pw\work\p\dot\edwardsjd\0373645\062890-sh-t-intersec-HPR&PleasantRun.dgn		DRAWN - TJD	REVISED -
		CHECKED - AWM	REVISED -
		DATE - 12/04/2013	REVISED -

STATE OF ILLINOIS
DEPARTMENT OF TRANSPORTATION

HPR-YUCAN AND PLEASANT RUN INTERSECTION DETAIL		F.A.U. R.T.E.	SECTION	COUNTY	TOTAL SHEETS	SHEET NO.
SCALE: 1"=20'		8012	21(W-3, TS-1, RS-7)	SANGAMON	679	304
SHEET NO. 1 OF 1 SHEETS		STA. TO STA.		CONTRACT NO. 72890		

ILLINOIS FED. AID PROJECT	
---------------------------	--