

McDONALDS

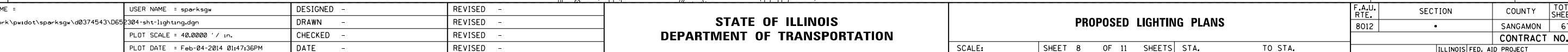
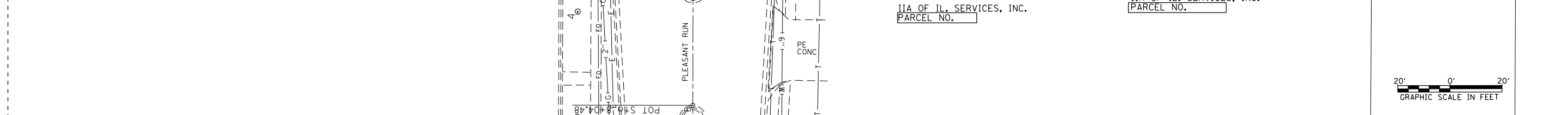
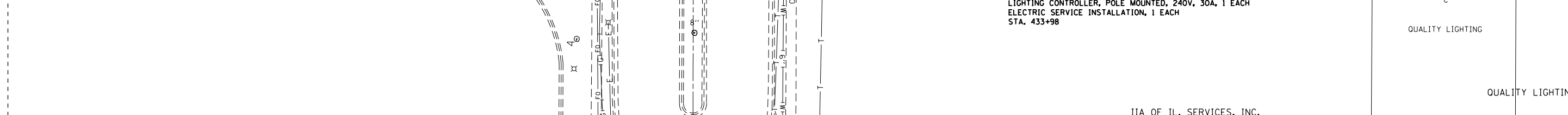
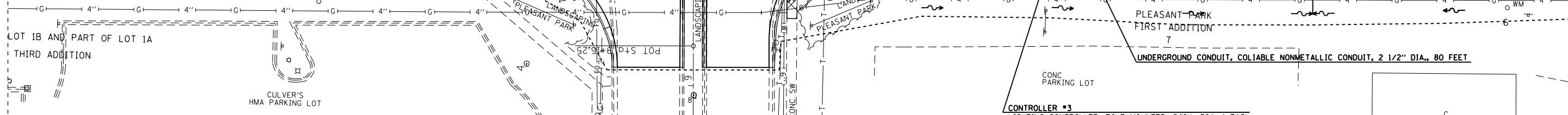
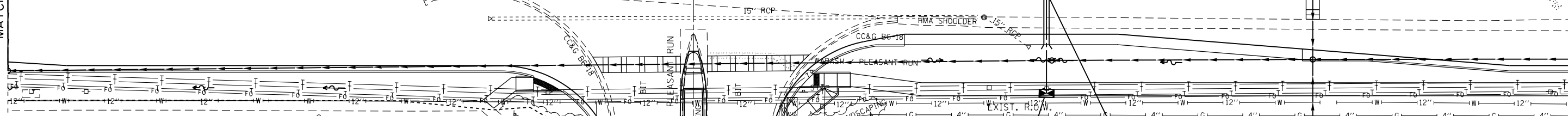
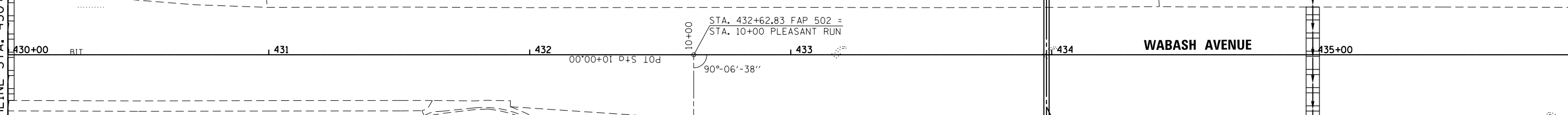
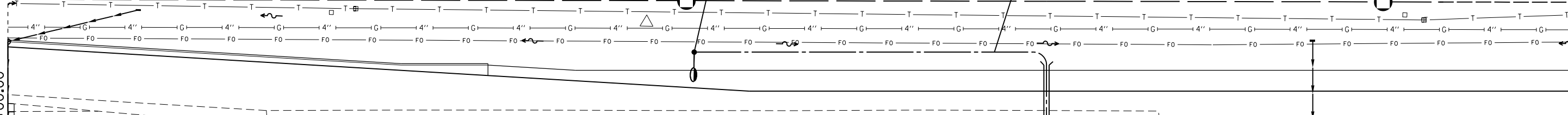
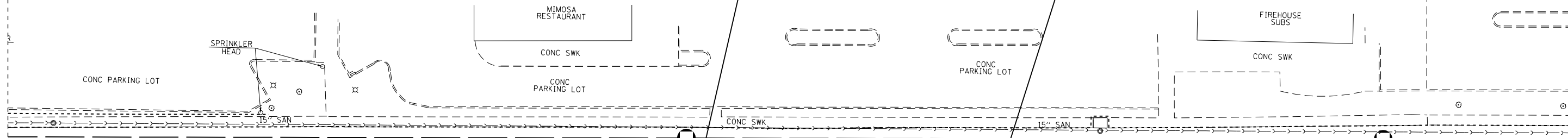


STONE DEVEL. CO.
NO.

COBBLESTONE DEVEL. CO.
PARCEL NO.

11
STA. 432+63
45' LT

A
CIRCUIT 1



MATCHLINE STA. 430+00.00

MATCHLINE STA. 436+00.00

430+00 BIT 431 432 00'00+01 P+S 10d 10+00 433 434 WABASH AVENUE 435+00

STA. 432+62.83 FAP 502 =
STA. 10+00 PLEASANT RUN

90°-06'-38"

15" ROP

HMA SHOULDER

15" ROP

LOT 1B AND PART OF LOT 1A
THIRD ADDITION

CULVER'S
HMA PARKING LOT

LANDSCAPING
PLEASANT PARK

LANDSCAPING
PLEASANT PARK

PLEASANT PARK
FIRST ADDITION

UNDERGROUND CONDUIT, COLIABLE NONMETALLIC CONDUIT, 2 1/2" DIA., 80 FEET

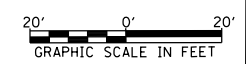
CONTROLLER #3
LIGHTING CONTROLLER, POLE MOUNTED, 240V, 30A, 1 EACH
ELECTRIC SERVICE INSTALLATION, 1 EACH
STA. 433+98

QUALITY LIGHTING

QUALITY LIGHTING

IIA OF IL. SERVICES, INC.
PARCEL NO.

IIA OF IL. SERVICES, INC.
PARCEL NO.



FILE NAME = c:\pwork\pwork\sparksgw\10374543\0652304-sht-lighting.dgn	USER NAME = sparksgw	DESIGNED -	REVISED -	STATE OF ILLINOIS DEPARTMENT OF TRANSPORTATION	PROPOSED LIGHTING PLANS			F.A.U. R.T.E.	SECTION	COUNTY	TOTAL SHEETS	SHEET NO.
Default	PLOT SCALE = 40.0000' / in.	DRAWN -	REVISED -					8012	.	SANGAMON	679	413
	PLOT DATE = Feb-04-2014 01:47:36PM	CHECKED -	REVISED -					CONTRACT NO. 72890				
		DATE -	REVISED -					ILLINOIS FED. AID PROJECT				