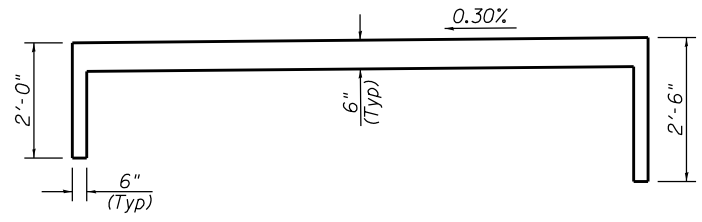
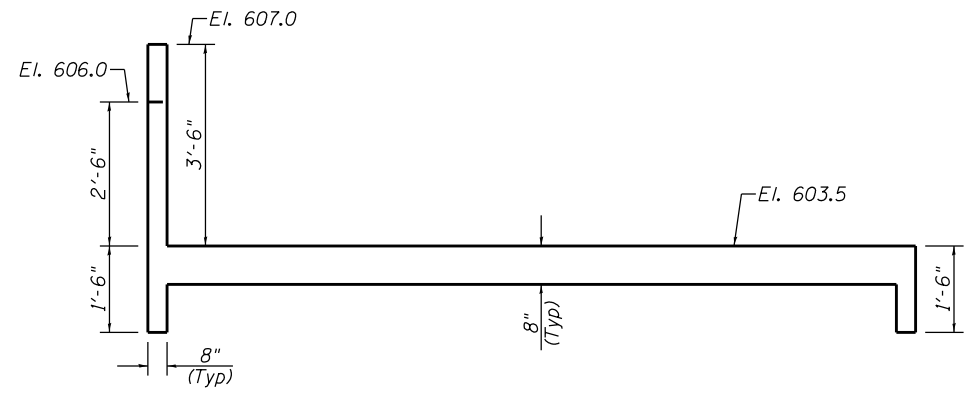


SECTION A-A



SECTION B-B



SECTION C-C

BILL OF MATERIAL

Bar	No.	Size	Length	Shape
a	18	#4	6'-3"	□
a ₁	20	#4	3'-9"	—
b	18	#4	24'-9"	—
h	10	#4	19'-9"	—
h ₁	4	#4	6'-9"	—
v	15	#4	5'-10"	L
v ₁	32	#4	4'-9"	—
v ₂	7	#4	3'-9"	—
v ₃	14	#4	4'-2"	L
Concrete Structures			Cu. Yd.	7.2
Reinforcement Bars			Pound	790
Paved Ditch (Special)			Foot	20
Cofferdam (Type 1) (Location-1)			Each	1

Notes:
 Cost of Structure Excavation required for South Outlet and Weir installation shall be included with Concrete Structures

FILE NAME =	USER NAME = sparksgw	DESIGNED - BMB	REVISED -
ei:\pw\work\p\idot\sparksgw\10373645\0672890-sht-details-weir.dgn		DRAWN - TJD	REVISED -
Default	PLOT SCALE = 2.0000' / in.	CHECKED - AWM	REVISED -
	PLOT DATE = Feb-04-2014 01:48:19PM	DATE - 12/04/2013	REVISED -

**STATE OF ILLINOIS
 DEPARTMENT OF TRANSPORTATION**

**KERASOTES RETENTION BASIN
 SOUTH OUTLET WEIR DETAIL**

SCALE: N/A SHEET 1 OF 2 SHEETS STA. TO STA.

F.A.U. RTE.	SECTION	COUNTY	TOTAL SHEETS	SHEET NO.
8012	21(W-3, TS-1, RS-7)	SANGAMON	679	434
CONTRACT NO. 72890				
ILLINOIS FED. AID PROJECT				