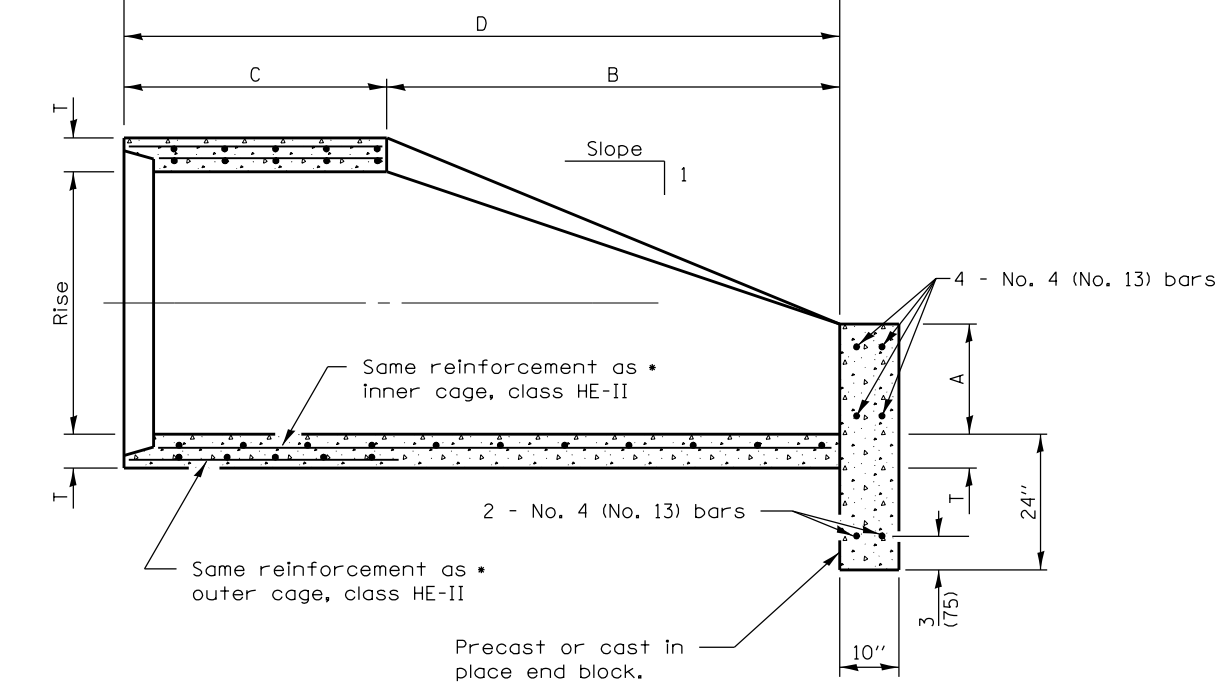
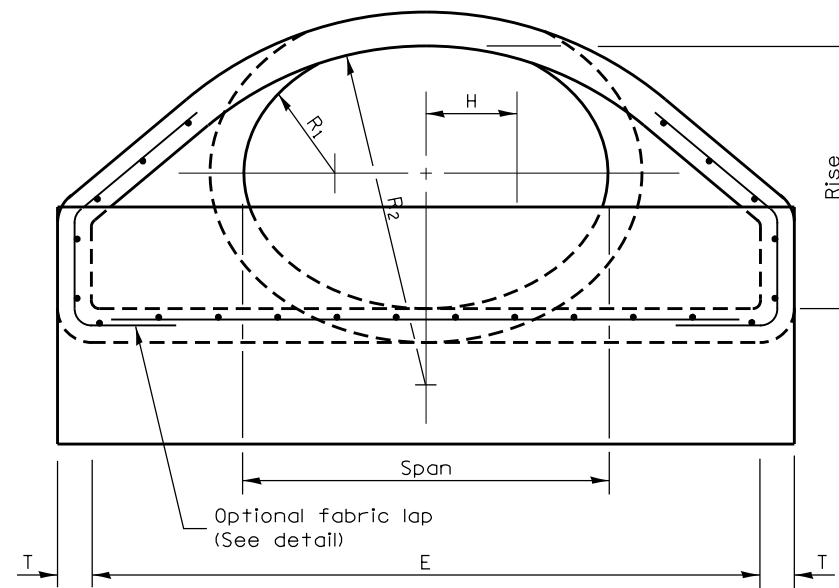


PLAN

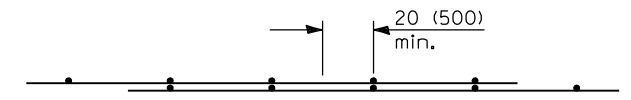


SECTION A-A

SPAN	RISE	EQUIV. DIA.	WALL T	A	B	C	D	E	H	R	R ₁	R ₂	APPROX. SLOPE
53 (1346)	34 (864)	42 (1050)	5 (127)	15 3/4 (400)	5'-0" (1,524 m)	36 (914)	8'-0" (2,438 m)	6'-6" (1,981 m)	12 1/8 (308)	13 (330)	14 1/2 (368)	3'-10" (1,168 m)	1:2.6
60 (1524)	38 (965)	48 (1200)	5 1/2 (140)	21 (533)	5'-0" (1,524 m)	36 (914)	8'-0" (2,438 m)	7'-0" (2,134 m)	13 1/2 (343)	14 (356)	16 1/2 (419)	4'-3 1/2" (1,308 m)	1:2.7



END VIEW



OPTIONAL FABRIC LAP

FILE NAME =	USER NAME = edwardsjd	DESIGNED - BMB	REVISED - JDE 03/04/2014
ct:\pw\work\p\dot\edwardsjd\0373645\0672890-sht-details-drop_box_end_section.dgn		DRAWN - TJD	REVISED -
Default	PLOT SCALE = 2.0000' / in.	CHECKED - AWM	REVISED -
	PLOT DATE = Mar-04-2014 03:53:30PM	DATE - 12/04/2013	REVISED -

**STATE OF ILLINOIS
DEPARTMENT OF TRANSPORTATION**

**PRECAST REINFORCED CONCRETE
ELLIPTICAL FLARED DROP BOX END SECTION**

SCALE: N/A SHEET 1 OF 2 SHEETS STA. TO STA.

F.A.U. RTE.	SECTION	COUNTY	TOTAL SHEETS	SHEET NO.
8012	21(W-3, TS-1, RS-7)	SANGAMON	679	436
CONTRACT NO. 72890				
ILLINOIS FED. AID PROJECT				