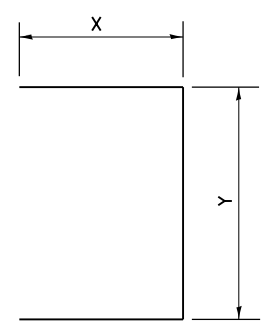


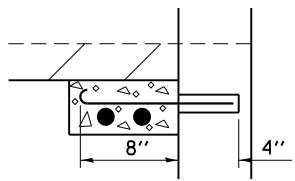
PLAN VIEW



U-BARS



A-BARS



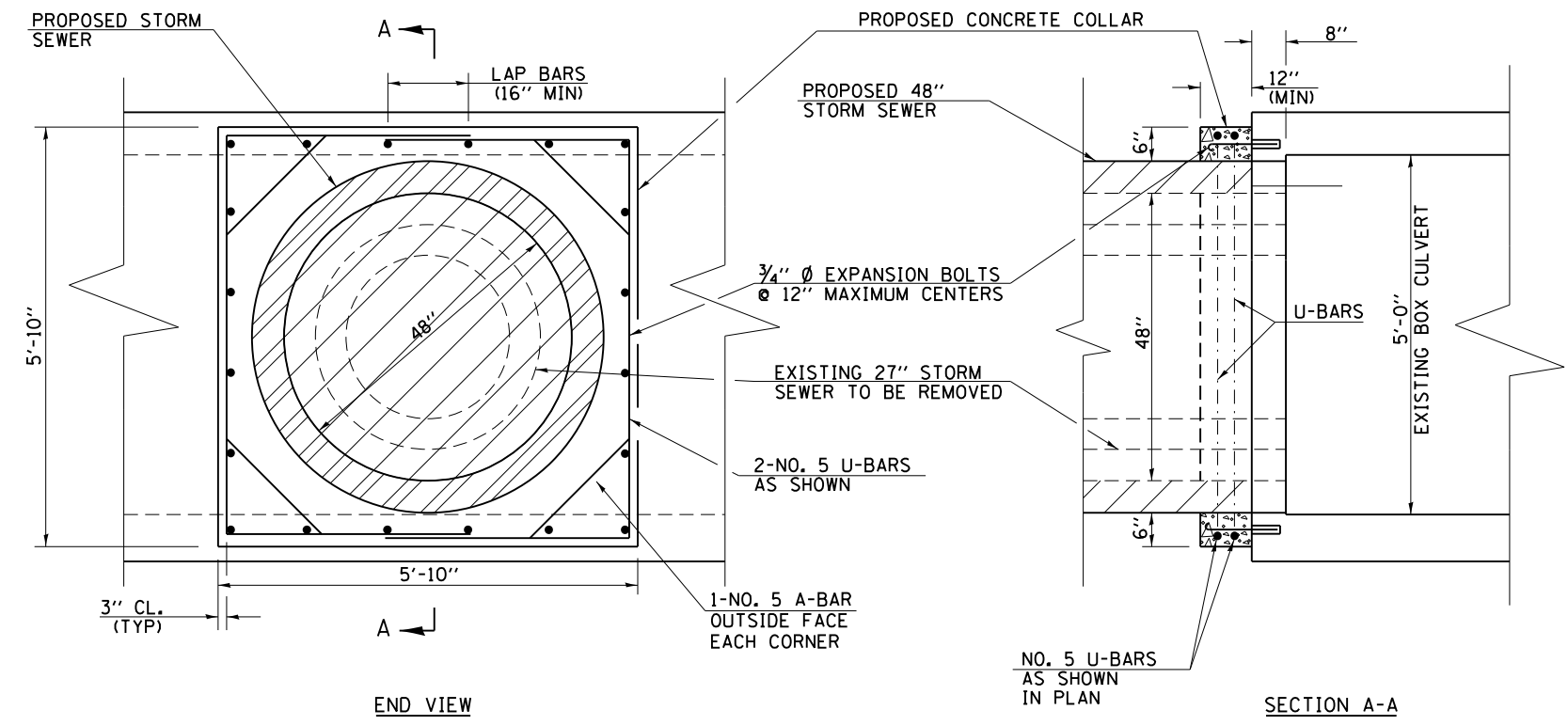
EXPANSION BOLT DETAIL

GENERAL NOTES

THE COLLAR SHALL BE CONSTRUCTED ENTIRELY OF CLASS SI CONCRETE IN ACCORDANCE WITH THE APPLICABLE PORTIONS OF SECTION 503 OF THE STANDARD SPECIFICATIONS. REINFORCEMENT BARS SHALL CONFORM TO SECTION 508.

EXPANSION BOLTS SHALL CONSIST OF SELF DRILLING APPROVED EXPANSION ANCHORS AND 3/4" HOOKED BOLTS, PROVIDING MINIMUM CERTIFIED PROOF LOAD = 4 KIPS

THIS WORK WILL BE PAID FOR AT THE CONTRACT UNIT PRICE EACH FOR EXPANSION BOLTS 3/4"x12", CUBIC YARD FOR CONCRETE COLLAR, AND POUND FOR REINFORCEMENT BARS.



END VIEW

SECTION A-A

LOCATION	PROPOSED STORM SEWER SIZE	PIPE AREA	EXTENSION COLLAR		A-BAR		U-BAR			QUANTITIES ARE FOR ONE COLLAR		
			WIDTH	HEIGHT	NO.	Z	NO.	X	Y	CONCRETE COLLAR	REINFORCEMENT BARS	EXPANSION BOLTS 3/4"x12"
	DIA IN	SQ FT	FT-IN	FT-IN		FT-IN		FT-IN	FT-IN	CU YD	LB	EACH
STA 28+67.20, 48.63' LT	48	18.35	5'-10"	5'-10"	4	1'-6"	4	3'-4"	5'-4"	0.60	57	20