

STATE OF ILLINOIS  
DEPARTMENT OF TRANSPORTATION  
DIVISION OF HIGHWAYS

**PROPOSED  
HIGHWAY PLANS**

S.B.I. ROUTE 4D (HARVEST RD)  
SECTION D6 DE MISC 2014-1

(DE-MISC) SEAL COAT  
MACOUPIN COUNTY  
C-96-035-14

S.B.I. RTE.	SECTION	COUNTY	TOTAL SHEETS	SHEET NO.
4D	D6 DE MISC 2014-1	MACOUPIN	18	1
		ILLINOIS	CONTRACT NO. 72G65	

D-96-035-14

FOR INDEX OF SHEETS, SEE SHEET NO. 2

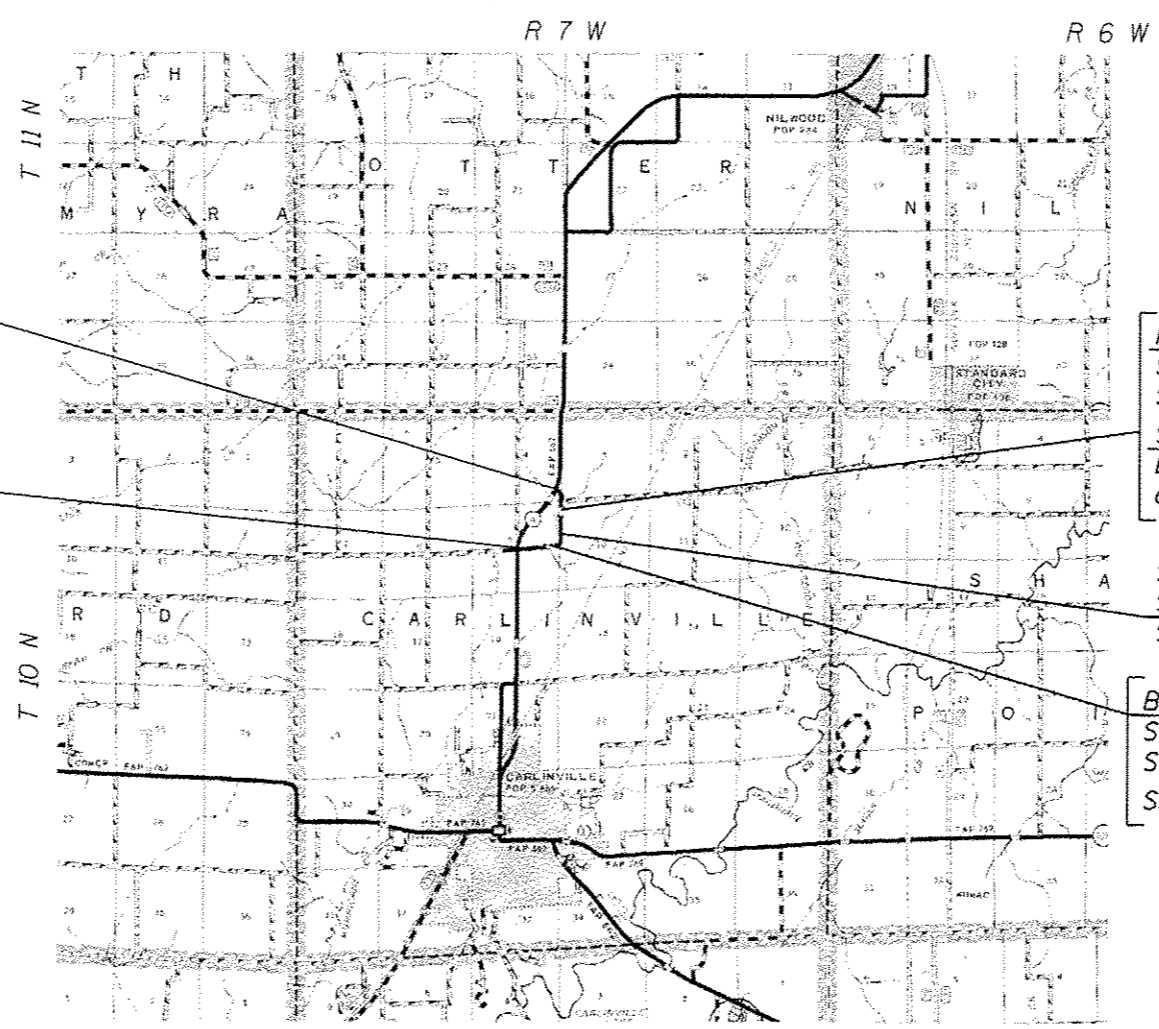
HIGHWAY CLASSIFICATION

S.B.I. ROUTE 4D (HARVEST RD)  
CLASSIFICATION: LOCAL

ADT: 50 (2012) PV = 98.0%  
ADT: 67 (2032) SU = 2.0%  
DESIGN SPEED: 60 MPH MU = 0.0%  
POSTED SPEED: 55 MPH



LOCATION OF SECTION INDICATED THUS: - [black rectangle] -



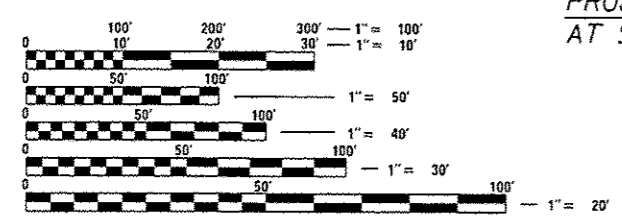
PROJECT BEGINS  
AT STA. 2111+60.05

PROJECT ENDS  
AT STA. 2172+59.03

PAVEMENT OMISSION:  
STA 2124+75.00 TO  
STA 2127+60.00  
SN: 059-2503 (Exist.)  
Dbl 8'x6' Box Culv  
over Hurricane Creek

STA EON:  
Sta 2136+51.01 (Bk)  
Sta 2137+36.86 (Ah)

BRIDGE OMISSION:  
STA 2151+58.50 TO  
STA 2151+91.52  
SN: 059-0031 (Exist.)



FULL SIZE PLANS HAVE BEEN PREPARED USING STANDARD ENGINEERING SCALES. REDUCED SIZED PLANS WILL NOT CONFORM TO STANDARD SCALES. IN MAKING MEASUREMENTS ON REDUCED PLANS, THE ABOVE SCALES MAY BE USED.

J.U.L.I.E.  
JOINT UTILITY LOCATION INFORMATION FOR EXCAVATION  
1-800-892-0123  
OR 811

SENIOR TEAM ENGINEER: MARK DUST (217) 785-0597  
TEAM ENGINEER: RENE CABRERA (217) 557-9062

CONTRACT NO. 72G65

GROSS LENGTH = 6,013.13 FT. = 1.14 MILE  
NET LENGTH = 5,695.11 FT. = 1.07 MILE

STATE OF ILLINOIS  
DEPARTMENT OF TRANSPORTATION  
DIVISION OF HIGHWAYS

SUBMITTED Feb. 19 20 14  
Roy D. Diskin  
DEPUTY DIRECTOR OF HIGHWAYS, REGION ENGINEER

March 21 20 14  
John D. Baranzelli, P.E.  
ENGINEER OF DESIGN AND ENVIRONMENT

March 21 20 14  
Omer Osman, P.E.  
DIRECTOR OF HIGHWAYS, CHIEF ENGINEER

PRINTED BY THE AUTHORITY  
OF THE STATE OF ILLINOIS