

STATE OF ILLINOIS
DEPARTMENT OF TRANSPORTATION
DIVISION OF HIGHWAYS

F.A. RTE.	SECTION	COUNTY	TOTAL SHEETS	SHEET NO.
*	D6 DE MISC 2014-2	**	12	1
ILLINOIS CONTRACT NO. 72G66				

* - FAP 658, FAU 8006 OVER FAI 72, FAP 10
** - MORGAN, SANGAMON

INDEX OF SHEETS

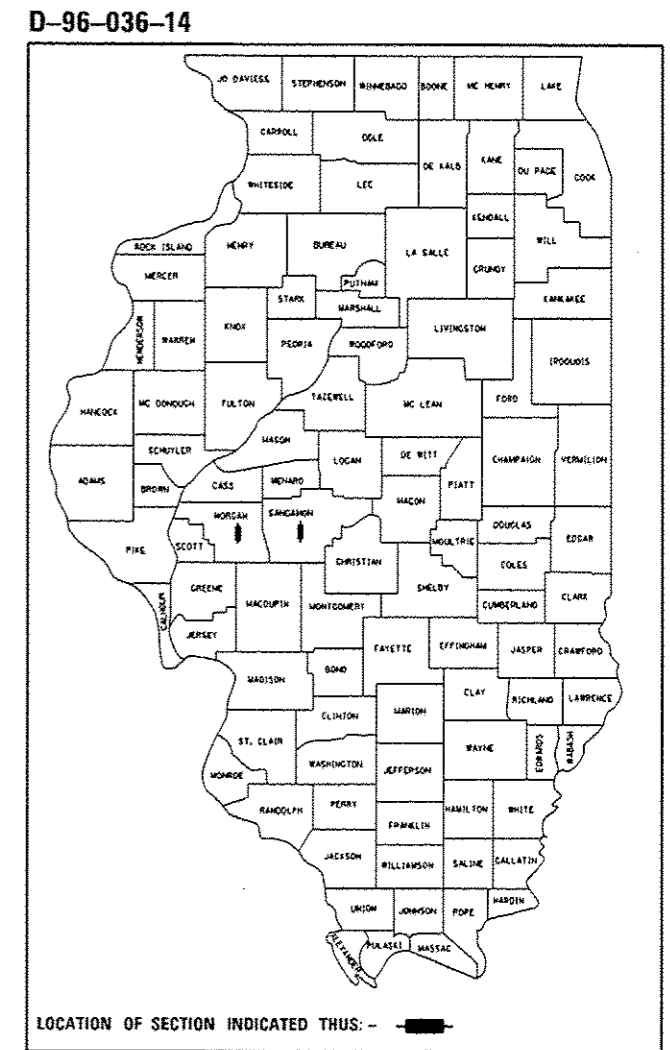
- COVER SHEET
- GENERAL NOTES, MIXTURE TABLES
- 3-4 SUMMARY OF QUANTITIES
- 5-11 PLAN SHEETS
- 12 TRAFFIC CONTROL DETAIL

LIST OF HIGHWAY STANDARDS

- 000001-06
- 606001-05
- 606301-04
- 606306-03
- 701201-04
- 701311-03
- 701602-07
- 782001
- BLR 21-9

PROPOSED HIGHWAY PLANS
VARIOUS ROUTES [FAP 658 (OLD IL 29 / WALNUT ST),
FAU 8006 OVER FAI 72 (OLD IL 4/OLD CHATHAM RD), & FAP 10 (IL 267)
SECTION D6 DE MISC 2014-2]

**CURB & MEDIAN REPAIR, BRIDGE APPROACH & PAVEMENT PATCHING
MORGAN & SANGAMON COUNTIES**
C-96-036-14

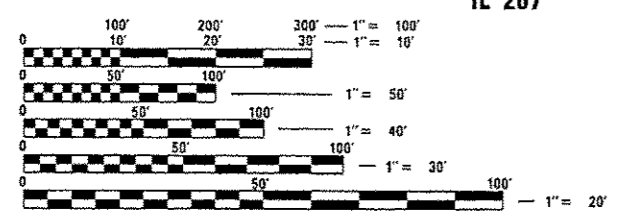


LOCATION 1 (WALNUT ST)
ADT: 7800 (2012)
PV: 94.55%
SU: 3.85%
MU: 1.60%

LOCATION 2 (OLD CHATHAM RD)
ADT: 8300 (2012)
PV: 96.45%
SU: 2.71%
MU: 0.84%

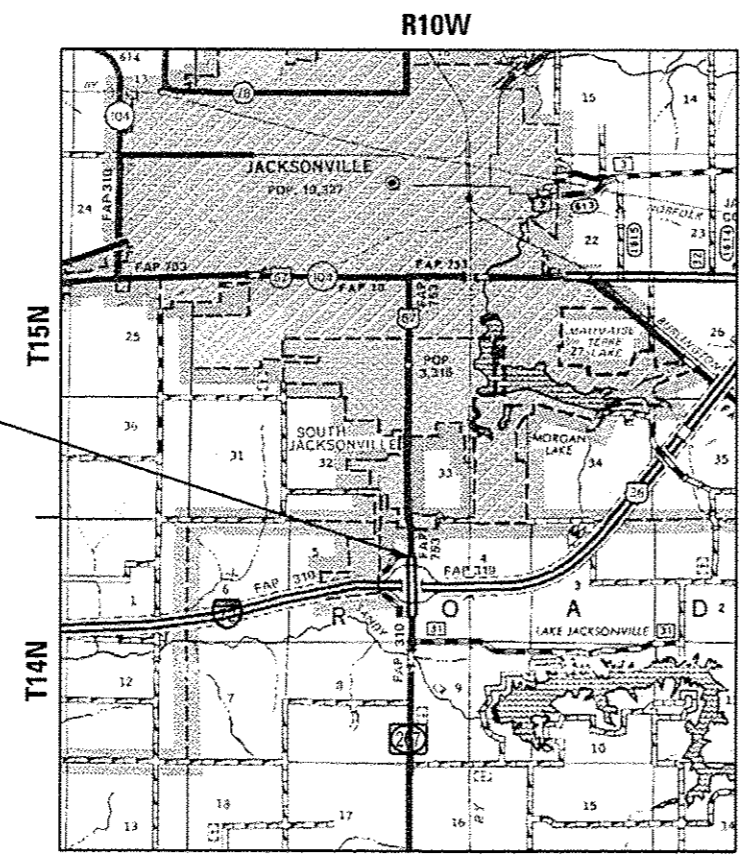
LOCATION 3 (IL 267)
ADT: 7650 (2012)
PV: 89.74%
SU: 8.17%
MU: 2.09%

**LOCATION #3
IL 267**

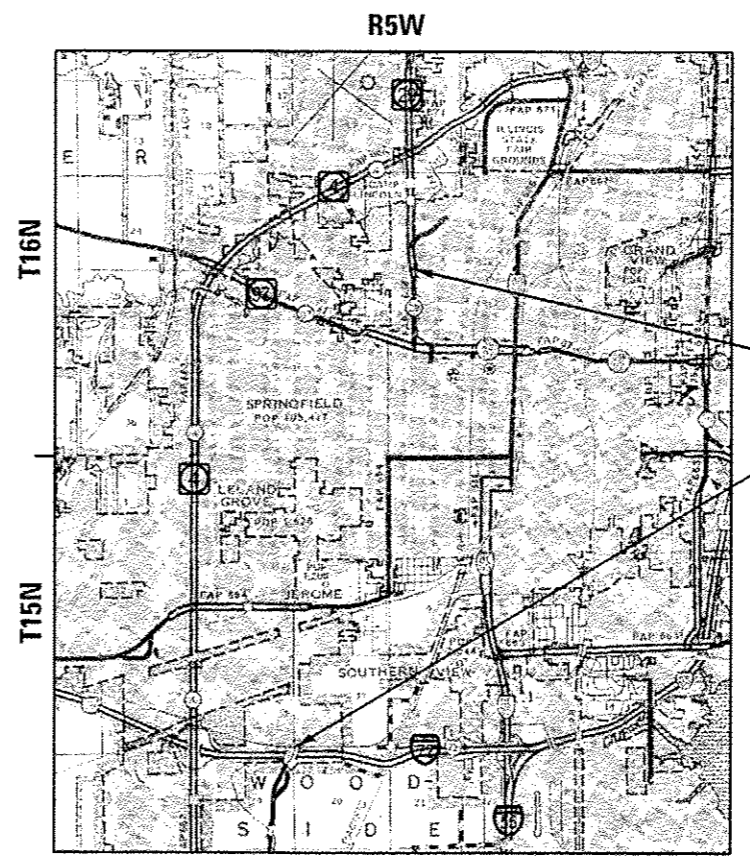


FULL SIZE PLANS HAVE BEEN PREPARED USING STANDARD ENGINEERING SCALES. REDUCED SIZED PLANS WILL NOT CONFORM TO STANDARD SCALES. IN MAKING MEASUREMENTS ON REDUCED PLANS, THE ABOVE SCALES MAY BE USED.

J.U.L.I.E.
JOINT UTILITY LOCATION INFORMATION FOR EXCAVATION
1-800-892-0123
OR 811



SOUTH JACKSONVILLE, MORGAN COUNTY



SPRINGFIELD, SANGAMON COUNTY

**LOCATION #1
WALNUT ST**

**LOCATION #2
OLD CHATHAM RD**

PROJECT ENGINEER: VINCE MADONIA (217) 785-9046
PROJECT MANAGER: JON KELLEY (217) 785-2739

PROJECT LOCATION MAPS

CONTRACT NO. 72G66

STATE OF ILLINOIS
DEPARTMENT OF TRANSPORTATION
DIVISION OF HIGHWAYS

SUBMITTED Feb 7 20 14
Rgr 2 Drake
DEPUTY DIRECTOR OF HIGHWAYS, REGION ENGINEER

March 21 20 14
John D. Baranzelli, PE, BC
ENGINEER OF DESIGN AND ENVIRONMENT

March 21 20 14
Omer Osman, PE, BC
DIRECTOR OF HIGHWAYS, CHIEF ENGINEER

**PRINTED BY THE AUTHORITY
OF THE STATE OF ILLINOIS**

GENERAL NOTES:

1. ANY REFERENCE TO A STANDARD IN THESE PLANS SHALL BE INTERPRETED TO MEAN THE EDITION AS INDICATED BY THE SUB NUMBER LISTED IN THE INDEX OF SHEETS OR THE COPY OF THE STANDARD INCLUDED IN THESE PLANS.
2. IN ADDITION TO FIELD SURVEYS, PLAN DIMENSIONS AND DETAILS RELATIVE TO THE EXISTING FACILITIES HAVE BEEN TAKEN FROM EXISTING PLANS AND ARE SUBJECT TO CONSTRUCTION VARIATIONS. IT SHALL BE THE CONTRACTOR'S RESPONSIBILITY TO VERIFY SUCH DIMENSIONS AND DETAILS IN THE FIELD. SUCH VARIATIONS SHALL NOT BE A CAUSE FOR ADDITIONAL COMPENSATION DUE TO A CHANGE IN THE SCOPE OF WORK; HOWEVER, THE CONTRACTOR WILL BE PAID FOR THE QUANTITY ACTUALLY FURNISHED AT THE UNIT PRICE BID FOR THE WORK.
3. THE CONTRACTOR SHALL BE RESPONSIBLE FOR PROTECTING UTILITY PROPERTY FROM CONSTRUCTION OPERATIONS, AS OUTLINED IN ARTICLE 107.31 OF THE STANDARD SPECIFICATIONS. THE J.U.L.I.E. NUMBER IS 1-800-892-0123. A MINIMUM OF 48 HOURS ADVANCE NOTICE IS REQUIRED.
4. THE LOCATIONS OF EXISTING WATER MAINS, GAS MAINS, SEWERS, ELECTRIC POWER LINES, TELEPHONE LINES AND OTHER UTILITIES AS SHOWN ON THE PLANS ARE BASED ON THE BEST INFORMATION AVAILABLE, BUT THEY ARE NOT GUARANTEED, ALL UTILITY LOCATIONS SHOWN ARE SUPPLIED BY THE UTILITY COMPANIES. IT IS THE CONTRACTOR'S RESPONSIBILITY TO ASCERTAIN THEIR EXACT LOCATION FROM THE UTILITY COMPANIES AND BY FIELD INSPECTION.
5. UNLESS DIRECTED BY THE ENGINEER, PAVEMENT MARKING LINES SHALL NOT BE LAID DIRECTLY OVER A LONGITUDINAL CRACK OR JOINT NOR OVER A TAR OR ASPHALT PAINTED LINE. THE EDGE OF A CENTERLINE OR LANE LINE SHALL BE OFFSET A MINIMUM DISTANCE OF 2" FROM A LONGITUDINAL CRACK OR JOINT. EDGE LINES SHALL BE APPROXIMATELY 2" FROM THE EDGE LINE OF PAVEMENT. SEE SECTION 780 OF THE STANDARD SPECIFICATIONS FOR TRAFFIC CONTROL ITEMS.
6. ALL SAW CUTS, NECESSARY TO COMPLETE THE WORK DETAILED IN THESE PLANS, SHALL BE INCLUDED IN THE COST FOR THE VARIOUS PAY ITEMS INVOLVED.
7. WHERE SECTION OR SUB-SECTION MARKERS ARE ENCOUNTERED, THE ENGINEER SHALL BE NOTIFIED BEFORE SUCH MONUMENTS ARE REMOVED. THE CONTRACTOR SHALL PROTECT AND CAREFULLY PRESERVE ALL PROPERTY MARKERS AND MONUMENTS UNTIL THE OWNER, AN AUTHORIZED AGENT OR LAND SURVEYOR HAS WITNESSED OR OTHERWISE REFERENCED THEIR LOCATION.

COMMITMENTS:

1. THE FIELD/RESIDENT ENGINEER SHALL CONTACT STUDIES AND PLANS COVERING ANY MAJOR PLAN CHANGES TO MAKE SURE NO PREVIOUS COMMITMENTS (NOT LISTED) WERE MADE AFFECTING THE DESIGN, AND TO ALLOW IMPROVED DESIGN FOR THE FUTURE.

THE FOLLOWING MIXTURE REQUIREMENTS ARE APPLICABLE FOR THIS PROJECT:

LOCATION #2 FAU 8006 OVER FAI 72 (OLD IL RTE. 4)	
MIXTURE USE(S):	LEVELING BINDER (HAND METHOD)
PG:	64-22
DESIGN AIR VOIDS:	4.0% @ N50
MIXTURE COMPOSITION: (GRADATION MIXTURE)	1L 12.5
FRICITION AGGREGATE:	N/A

DISTRICT SIX	
EXAMINED	01/23 20 14
<i>William M. Pranger</i> OPERATIONS ENGINEER	
EXAMINED	JAN 21 20 14
<i>Jimmy L. [Signature]</i> PROJECT IMPLEMENTATION ENGINEER	
EXAMINED	Jan 23 20 14
<i>ARML</i> PROGRAM DEVELOPMENT ENGINEER	

* FAP 658, FAU 8006 OVER FAI 72, FAP 10
** MORGAN, SANGAMON

FILE NAME *	USER NAME * kellejyb	DESIGNED - RTS	REVISED -	STATE OF ILLINOIS DEPARTMENT OF TRANSPORTATION	GENERAL NOTES, COMMITMENTS, & MIXTURE TABLES			F.A. RTE.	SECTION	COUNTY	TOTAL SHEETS	SHEET NO.
c:\pwork\p\doc\kellejyb\0368042\06x	***.dgn	DRAWN - RTS	REVISED -					*	DS DE MISC 2014-2	**	12	2
	PLOT SCALE = 100.0000' / in.	CHECKED -	REVISED -		SCALE:	SHEET 1 OF 1 SHEETS	STA.	TO STA.	ILLINOIS FEO. AID PROJECT CONTRACT NO. 72G66			
	PLOT DATE = Feb-07-2014 11:08:46AM	DATE - 01-06-14	REVISED -									

CODE NO.	ITEM	UNIT	TOTAL QUANTITY	SANGAMON		MORGAN			
				100% STATE		100% STATE			
				CONSTRUCTION CODE			IL 29/WALNUT ST ROADWAY	OLD IL 4 ROADWAY	IL 267 ROADWAY
				0005 URBAN	0005 URBAN	0005 URBAN			
20200100	EARTH EXCAVATION	CU YD	20			20			
40600525	LEVELING BINDER (HAND METHOD), N50	TON	5		5				
44000500	COMBINATION CURB AND GUTTER REMOVAL	FOOT	178			178			
60624600	CORRUGATED MEDIAN	SQ FT	121	121					
67100100	MOBILIZATION	L SUM	1	0.33	0.33	0.34			
70100450	TRAFFIC CONTROL AND PROTECTION, STANDARD 701201	L SUM	1			1			
70102632	TRAFFIC CONTROL AND PROTECTION, STANDARD 701602	L SUM	1	1					
78200300	PRISMATIC CURB REFLECTOR	EACH	11			11			
X4402020	CONCRETE MEDIAN SURFACE REMOVAL	SQ FT	464.2			464.2			
X6060500	CORRUGATED MEDIAN REMOVAL	SQ FT	121	121					
X6065701	CONCRETE MEDIAN, TYPE SM-4.06	SQ FT	552.1			552.1			
X7010222	TRAFFIC CONTROL AND PROTECTION, STANDARD BLR 21 (SPECIAL)	L SUM	1		1				
X7015005	CHANGEABLE MESSAGE SIGN	CAL DA	14		14				
Z0001800	APPROACH SLAB REPAIR (PARTIAL DEPTH)	SQ YD	24		24				

* FAP 058, FAU 8006 OVER FAI 72, FAP 10
** MORGAN, SANGAMON

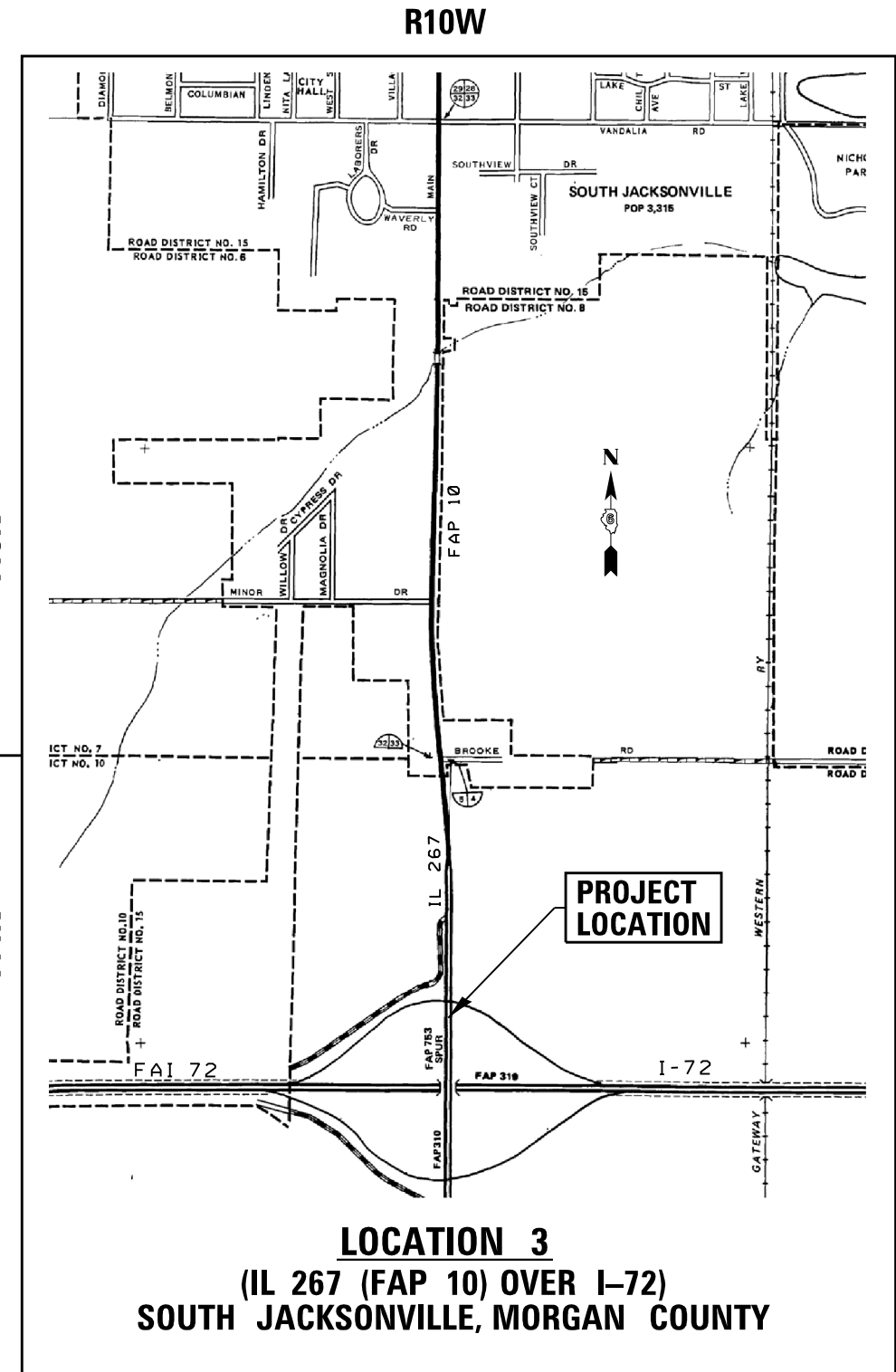
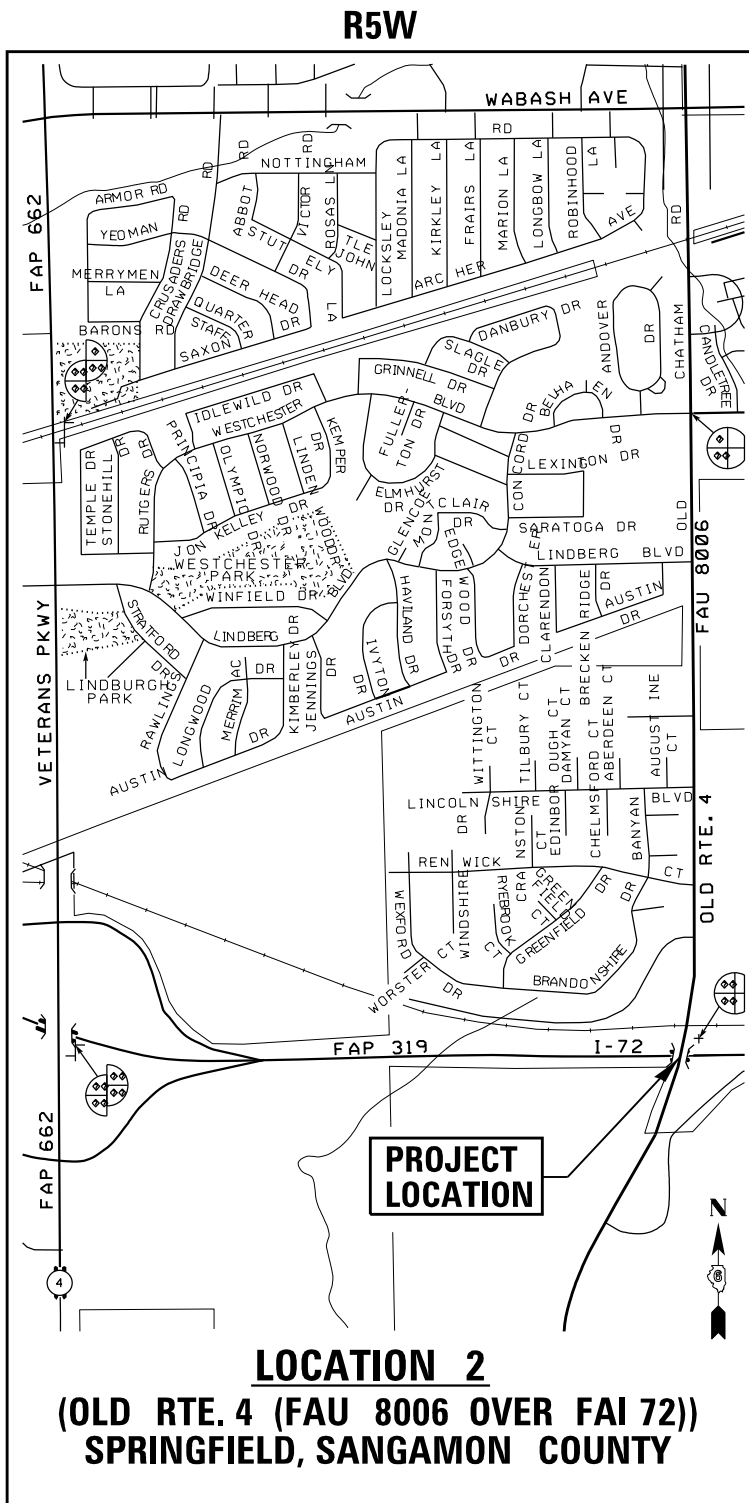
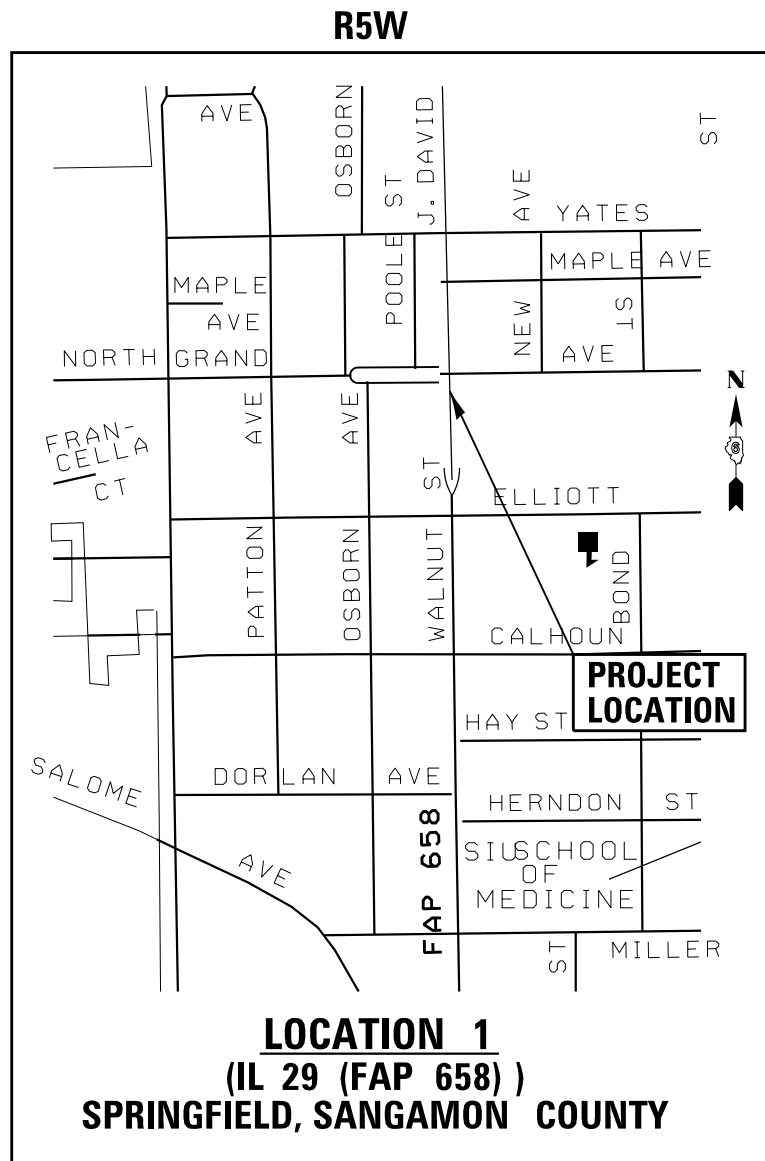
FILE NAME :	USER NAME :	DESIGNED -	REVISED -	STATE OF ILLINOIS DEPARTMENT OF TRANSPORTATION	SUMMARY OF QUANTITIES				F.A. RTE.	SECTION	COUNTY	TOTAL SHEETS	SHEET NO.	
o:\pe_work\pvidot\sparksg\0360042\0672066-wt-500.dgn	sparksg	DRAWN -	REVISED -		SCALE:	SHEET	OF	SHEETS	STA.	TO STA.	06 DE MISC 2014-2	**	12	3
PLOT SCALE * 100.0000 / in.		CHECKED -	REVISED -						CONTRACT NO. 72666					
Default		DATE -	REVISED -						ILLINOIS FED. AID PROJECT					

9402 15 11-

CODE NO.	ITEM	UNIT	TOTAL QUANTITY	SANGAMON		MORGAN			
				100% STATE		100% STATE			
				CONSTRUCTION CODE			IL 29/WALNUT ST ROADWAY	OLD IL 4 ROADWAY	IL 267 ROADWAY
							0005 URBAN	0005 URBAN	0005 URBAN
Z0012500	CONCRETE CURB REPAIR	FOOT	90	90					

* FAP 658, FAU 8006 OVER FAI 72, FAP 10
 ** MORGAN, SANGAMON

FILE NAME =	USER NAME = sparkagw	DESIGNED -	REVISED -	STATE OF ILLINOIS DEPARTMENT OF TRANSPORTATION	SUMMARY OF QUANTITIES				F.A. RTE.	SECTION	COUNTY	TOTAL SHEETS	SHEET NO.
c:\pwwork\pwwork\sparkagw\d0368042\067	2066-ah1-500.dgn	DRAWN -	REVISED -						.	D6 DE MISC 2014-2	**	12	4
	PLOT SCALE = 100.0000 ' / in.	CHECKED -	REVISED -		CONTRACT NO. 72666				ILLINOIS FED. AID PROJECT				
Default	PLOT DATE = Feb-07-2014 02:19:46PM	DATE -	REVISED -		SCALE:	SHEET	OF	SHEETS	STA.	TO STA.			



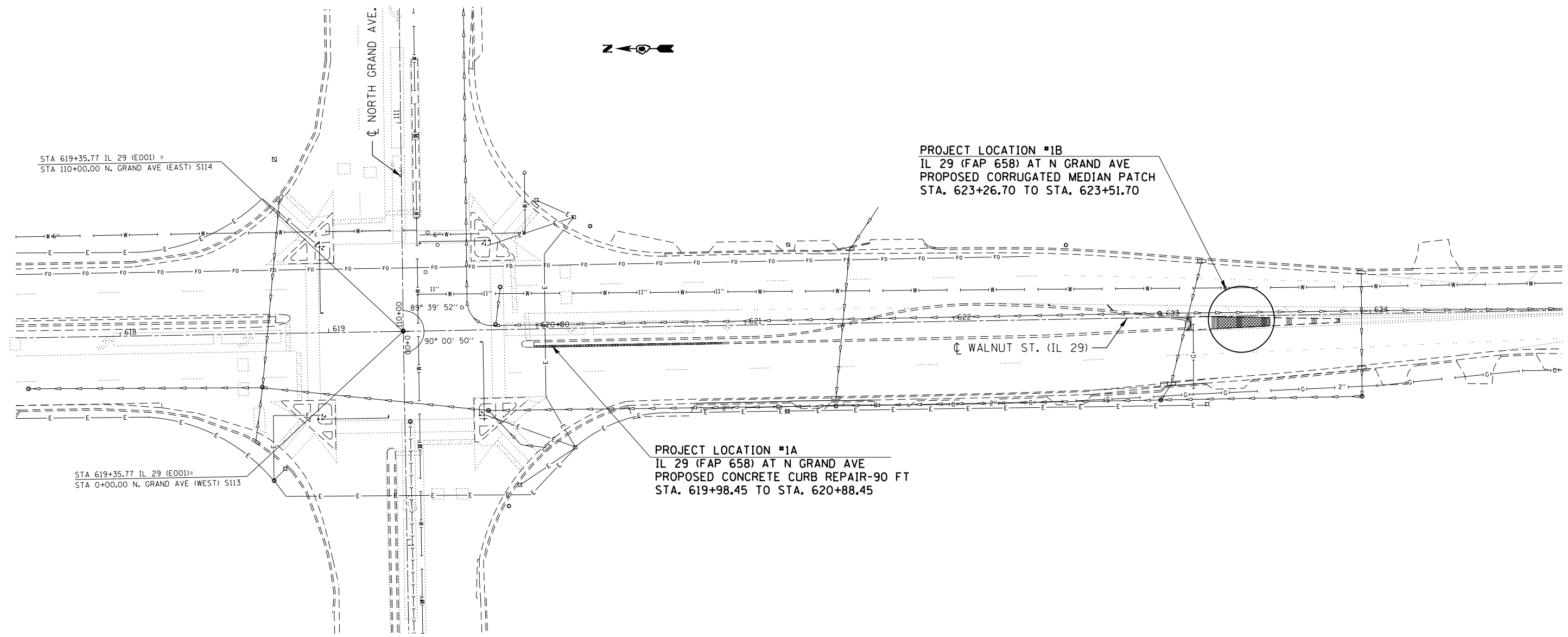
• FAP 658, FAU 8006 OVER FAI 72, FAP 10
•• MORGAN, SANGAMON

FILE NAME =	USER NAME = sparksgw	DESIGNED -	RTS	REVISED -	
ct:\pw\work\p1dot\sparksgw\10368042\06720666-sht-pln.dgn		DRAWN -	RTS	REVISED -	
		PLOT SCALE = 200.0000' / in.	CHECKED -	REVISED -	
Default		PLOT DATE = Feb-07-2014 02:20:57PM	DATE -	11-25-13	REVISED -

STATE OF ILLINOIS
DEPARTMENT OF TRANSPORTATION

LOCATION MAPS			
SCALE:	SHEET 1	OF 1 SHEETS	STA. TO STA.

F.A. RTE.	SECTION	COUNTY	TOTAL SHEETS	SHEET NO.
•	D6 DE MISC 2014-2	••	12	5
CONTRACT NO. 72G66				
ILLINOIS FED. AID PROJECT				



STA 619+35.77 IL 29 (E001) =
STA 110+00.00 N. GRAND AVE (EAST) S114

STA 619+35.77 IL 29 (E001)=
STA 0+00.00 N. GRAND AVE (WEST) S113

PROJECT LOCATION *1B
IL 29 (FAP 658) AT N GRAND AVE
PROPOSED CORRUGATED MEDIAN PATCH
STA. 623+26.70 TO STA. 623+51.70

PROJECT LOCATION *1A
IL 29 (FAP 658) AT N GRAND AVE
PROPOSED CONCRETE CURB REPAIR-90 FT
STA. 619+98.45 TO STA. 620+88.45

CL WALNUT ST. (IL 29)

• FAP 658
•• SANGAMON

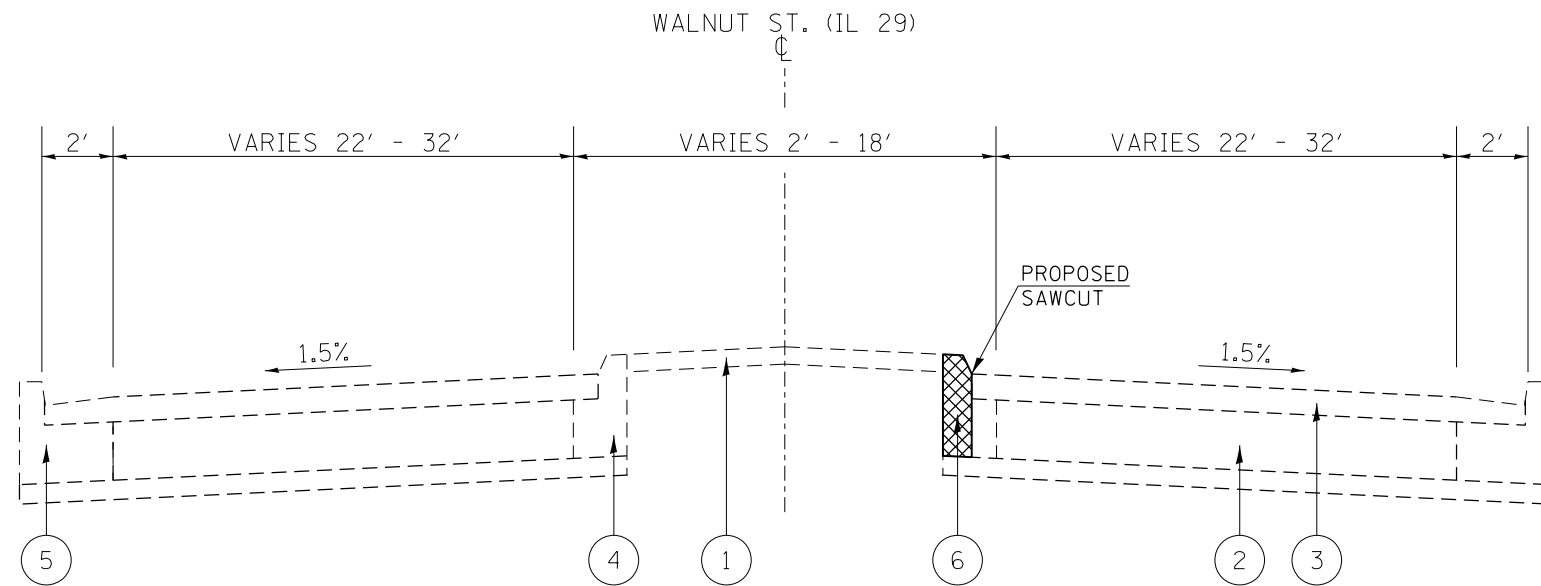
FILE NAME =	USER NAME = sparksgw	DESIGNED -	RTS	REVISED -	
ct:\pw\work\p\idot\sparksgw\10368042\06720666-sht-plen.dgn	20666-sht-plen.dgn	DRAWN -	RTS	REVISED -	
Default	PLOT SCALE = 200.0000' / in.	CHECKED -		REVISED -	
	PLOT DATE = Feb-07-2014 02:21:06PM	DATE -	11-25-13	REVISED -	

**STATE OF ILLINOIS
DEPARTMENT OF TRANSPORTATION**

**PROJECT DETAILS
LOCATION #1, IL RTE. 29**

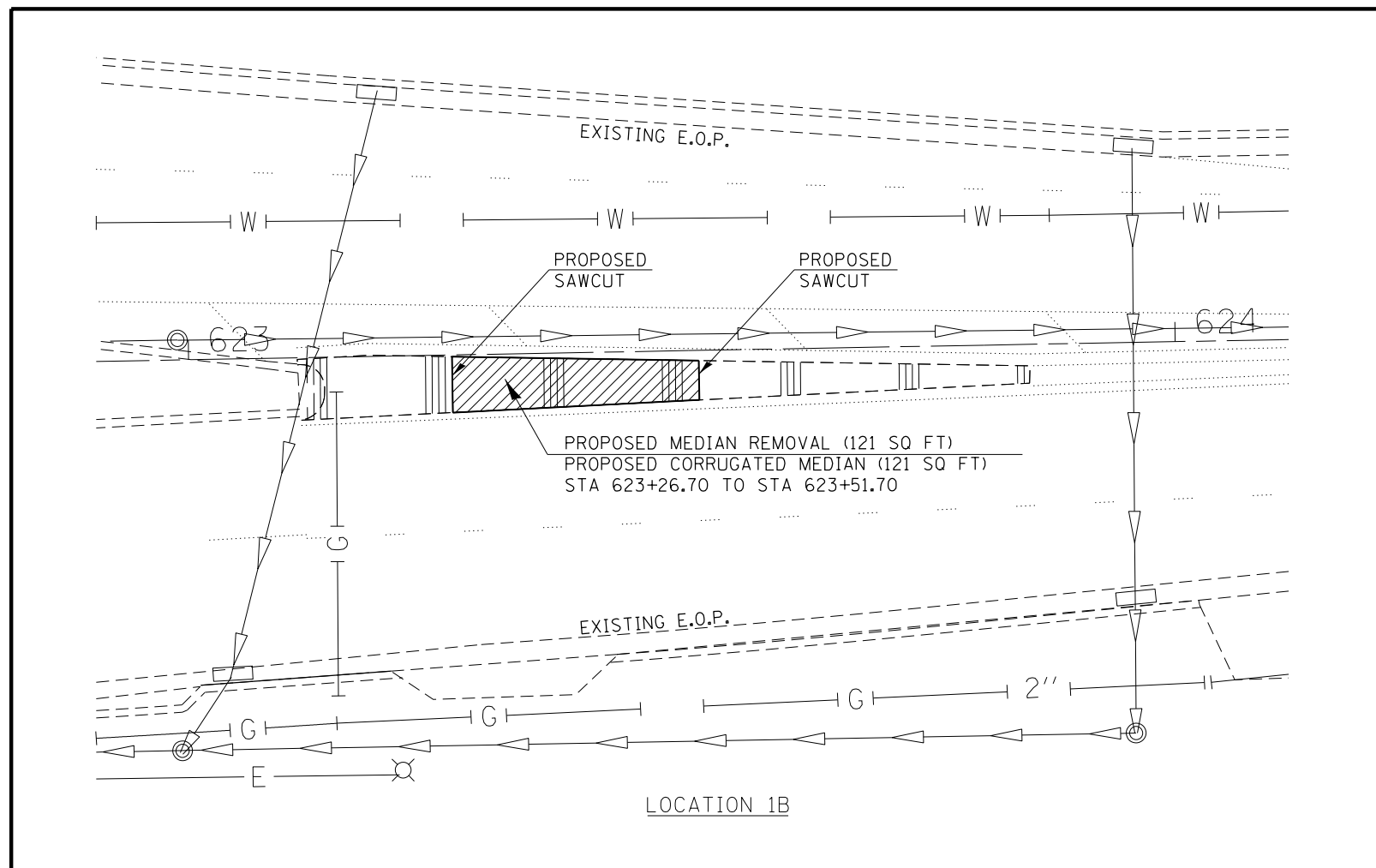
SCALE: SHEET 1 OF 2 SHEETS STA. TO STA.

F.A. RTE.	SECTION	COUNTY	TOTAL SHEETS	SHEET NO.
•	D6 DE MISC 2014-2	••	12	6
CONTRACT NO. 72G66			ILLINOIS FED. AID PROJECT	



- LEGEND**
- ① EX CONCRETE MEDIAN SURFACE, 4"
 - ② EX PCC BASE COURSE 9"
 - ③ EX HOT-MIX ASPHALT SURFACE, 2 1/2"
 - ④ EX CONCRETE CURB & GUTTER M6.06
 - ⑤ EX CONCRETE CURB & GUTTER B 6.24
 - ⑥ PR CONCRETE CURB REPAIR

STA 619+02.70 TO STA 625+12.00
 STA 619+98.32 TO STA 621+15.00 - NORTHBOUND LEFT TURN LANE
LOCATION 1A
 CONCRETE CURB REPAIR FROM STA 619+98.45 TO STA 620+88.45 (90 FT)



BILL OF MATERIALS			
CODE #	ITEM	UNIT	QUANTITY
60624600	CORRUGATED MEDIAN	SQ FT	121
X6060500	CORRUGATED MEDIAN REMOVAL	SQ FT	121
Z0012500	CONCRETE CURB REPAIR	FOOT	90

FILE NAME =	USER NAME = sparksgw	DESIGNED - RTS	REVISED -
		DRAWN - RTS	REVISED -
		CHECKED -	REVISED -
		DATE - 11-25-13	REVISED -

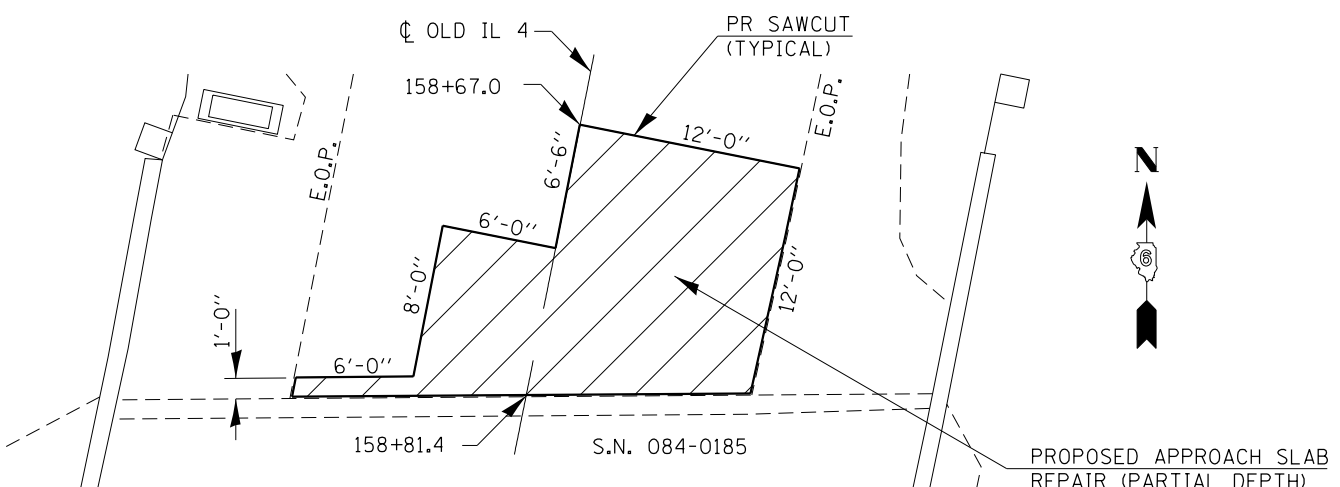
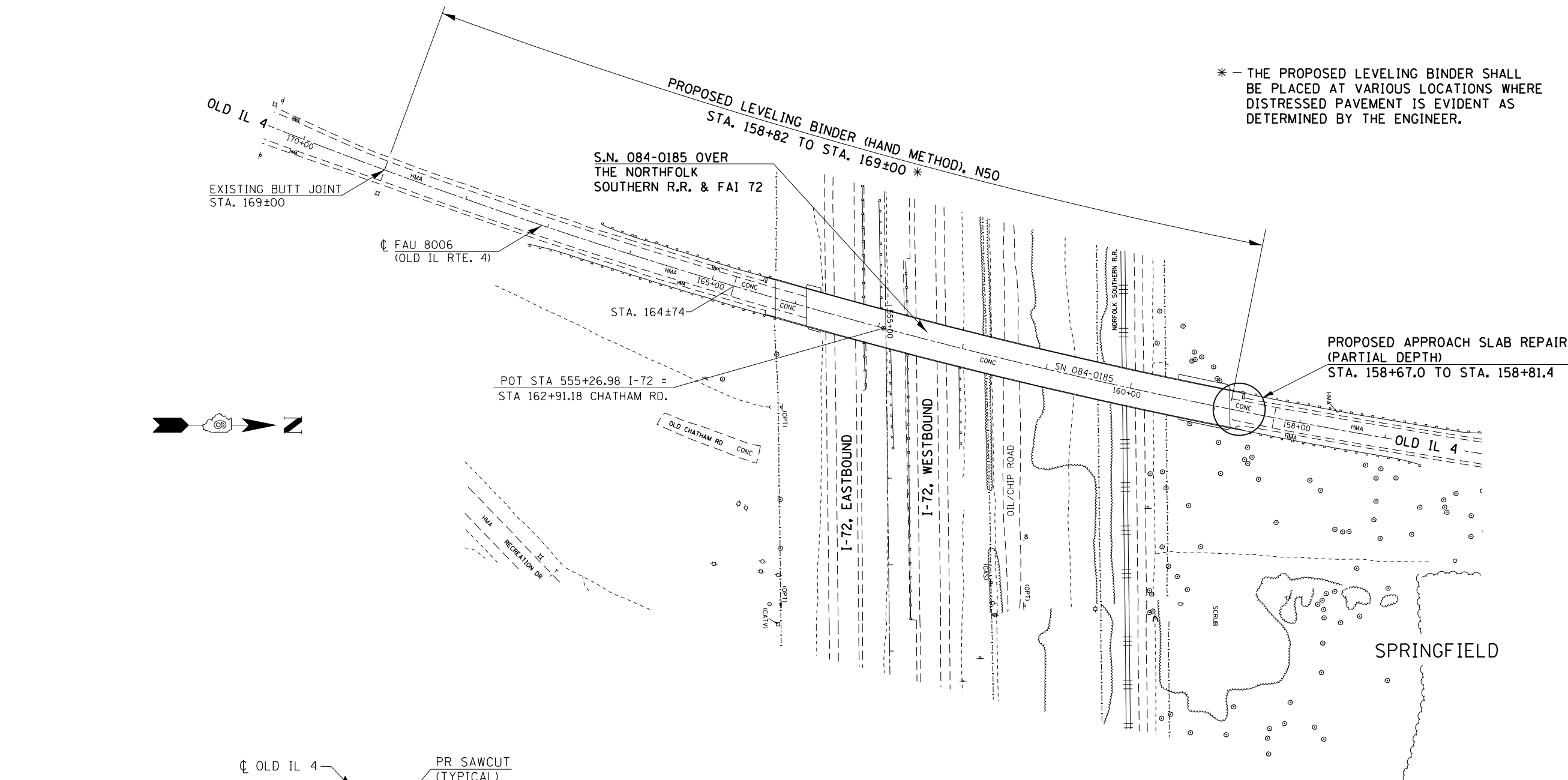
**STATE OF ILLINOIS
 DEPARTMENT OF TRANSPORTATION**

PROJECT DETAILS			
LOCATION #1, IL RTE. 29			
SCALE:	SHEET 2	OF 2 SHEETS	STA. TO STA.

F.A. RTE.	SECTION	COUNTY	TOTAL SHEETS	SHEET NO.
	D6 DE MISC 2014-2	**	12	7
			CONTRACT NO. 72G66	
ILLINOIS FED. AID PROJECT				

• FAP 658
 •• SANGAMON

* - THE PROPOSED LEVELING BINDER SHALL BE PLACED AT VARIOUS LOCATIONS WHERE DISTRESSED PAVEMENT IS EVIDENT AS DETERMINED BY THE ENGINEER.



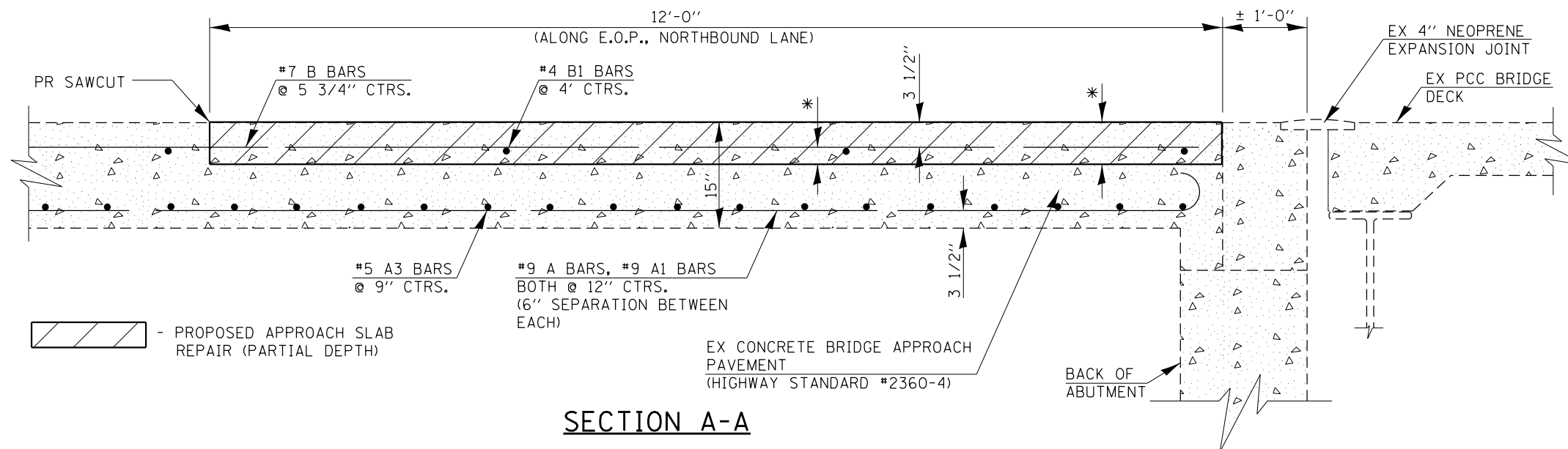
**PLAN VIEW (NORTH SIDE OF S.N. 084-0185)
BRIDGE APPROACH SLAB REPAIR (PARTIAL DEPTH)**
(SEE SHEET 9 FOR APPROACH CROSS SECTION)

PROPOSED APPROACH SLAB REPAIR (PARTIAL DEPTH)
23.2 SQ YD
**

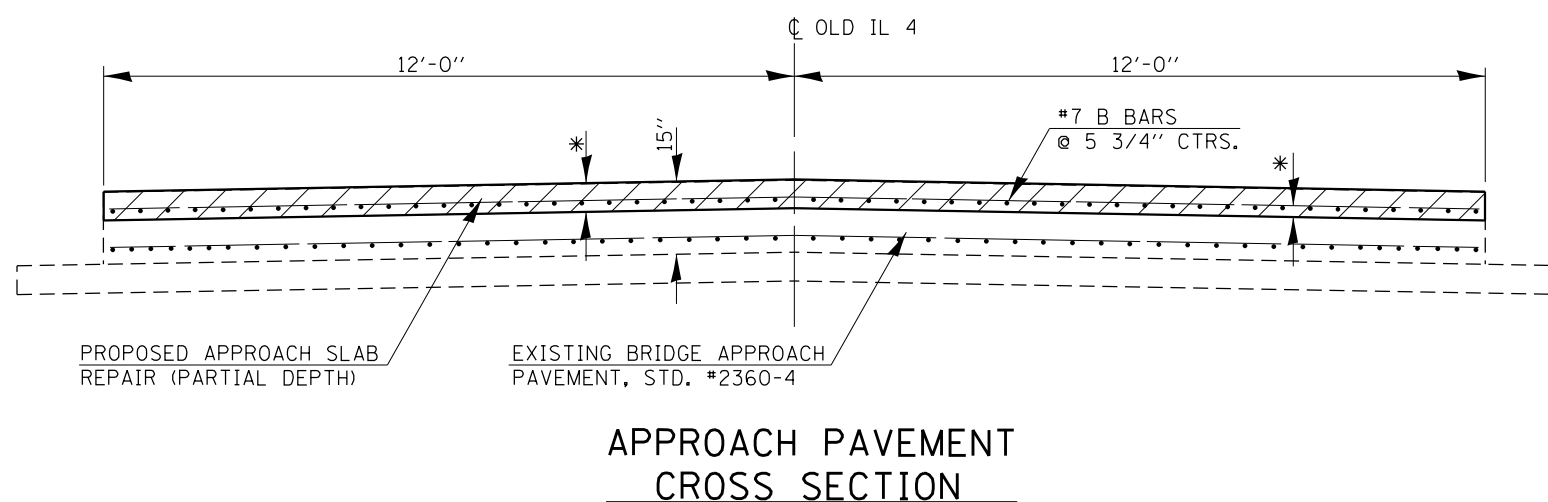
** - THE DEPTH OF PROPOSED SLAB REPAIR SHALL BE 1" MINIMUM BELOW THE TOP REINFORCEMENT MATTING. PROPOSED SLAB REPAIR SHALL NOT EXCEED 6" MAXIMUM.

BILL OF MATERIALS			
CODE #	ITEM	UNIT	QUANTITY
Z0001800	APPROACH SLAB REPAIR (PARTIAL DEPTH)	SQ YD	23.2
40600525	LEVELING BINDER (HAND METHOD), N50	TON	5.0 *

• FAU 8006 OVER FAI 72
•• SANGAMON



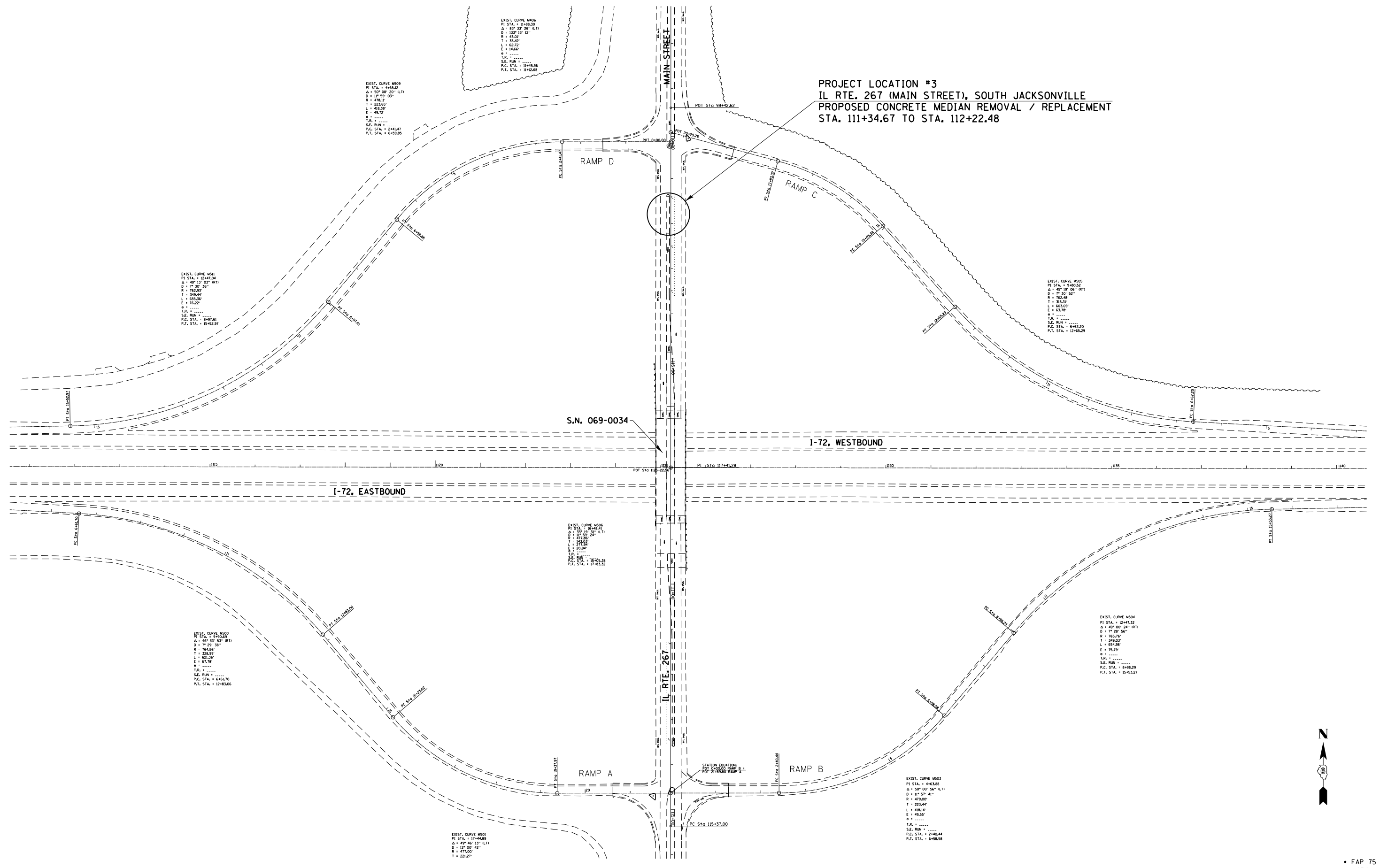
* - THE DEPTH OF PROPOSED SLAB REPAIR SHALL BE 1" MINIMUM BELOW THE TOP REINFORCEMENT MATTING. PROPOSED SLAB REPAIR SHALL NOT EXCEED 6" MAXIMUM.



• FAU 8006 OVER FAI 72
•• SANGAMON

FILE NAME =	USER NAME = sparksgw	DESIGNED - RTS	REVISED -	STATE OF ILLINOIS DEPARTMENT OF TRANSPORTATION	PROJECT DETAILS			F.A. RTE.	SECTION	COUNTY	TOTAL SHEETS	SHEET NO.
Default	et:\pw\work\p\id\dot\sparksgw\10368042\06720666-sht-plen.dgn	DRAWN - RTS	REVISED -		LOCATION #2, OLD IL RTE. 4			•	D6 DE MISC 2014-2	••	12	9
	PLOT SCALE = 200.0000' / in.	CHECKED -	REVISED -		SCALE: SHEET 2 OF 2 SHEETS STA. TO STA.			CONTRACT NO. 72G66				
	PLOT DATE = Feb-07-2014 02:21:09PM	DATE - 11-25-13	REVISED -		ILLINOIS FED. AID PROJECT							

**PROJECT LOCATION #3
IL RTE. 267 (MAIN STREET), SOUTH JACKSONVILLE
PROPOSED CONCRETE MEDIAN REMOVAL / REPLACEMENT
STA. 111+34.67 TO STA. 112+22.48**



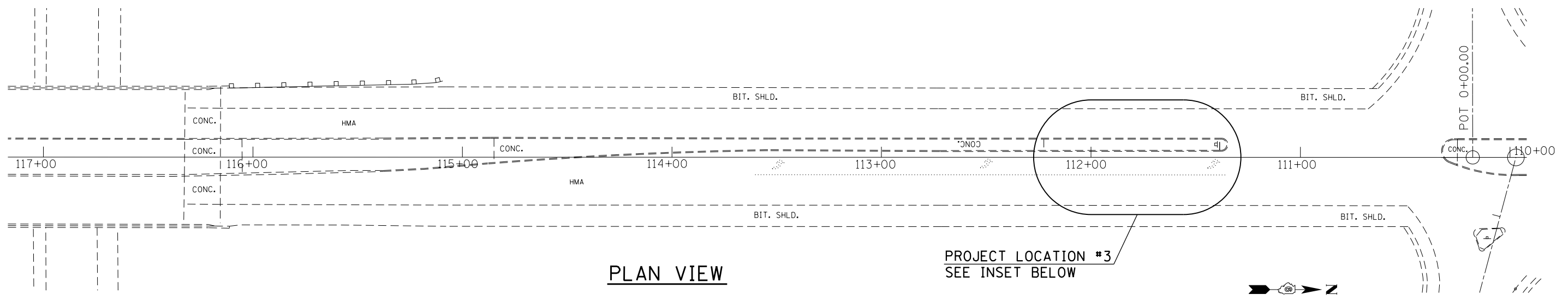
FILE NAME =	USER NAME = sparksgw	DESIGNED -	RTS	REVISED -	
Default	ct:\pw\work\p\id\sparksgw\0368042\0672066-sht-plan.dgn	DRAWN -	RTS	REVISED -	
	PLOT SCALE = 200.0000' / in.	CHECKED -		REVISED -	
	PLOT DATE = Feb-07-2014 02:21:09PM	DATE -	11-29-13	REVISED -	

**STATE OF ILLINOIS
DEPARTMENT OF TRANSPORTATION**

PROJECT DETAILS			
LOCATION #3, IL 267			
SCALE:	SHEET 1	OF 2 SHEETS	STA. TO STA.

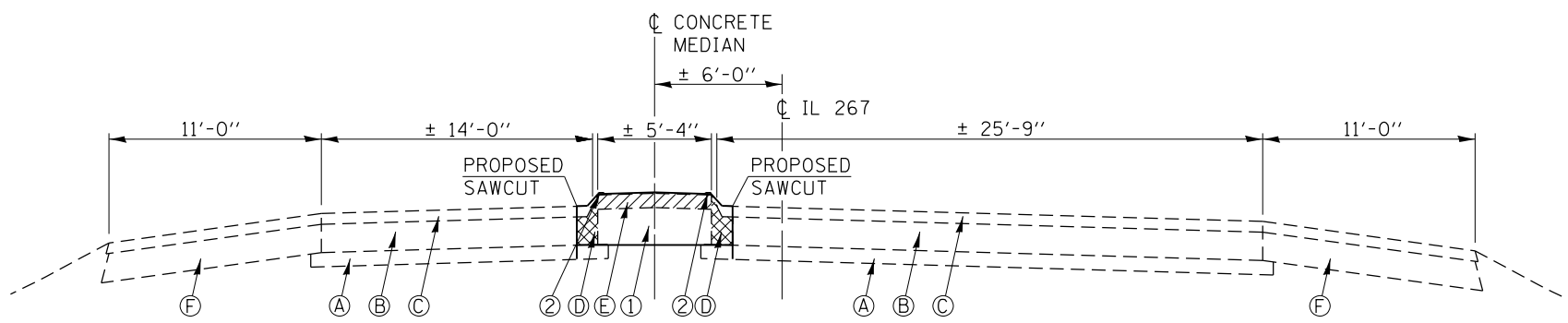
F.A. RTE.	SECTION	COUNTY	TOTAL SHEETS	SHEET NO.
	D6 DE MISC 2014-2	**	12	10
			CONTRACT NO. 72G66	
ILLINOIS FED. AID PROJECT				

• FAP 75
• MORGAN



PLAN VIEW

PROJECT LOCATION #3
SEE INSET BELOW



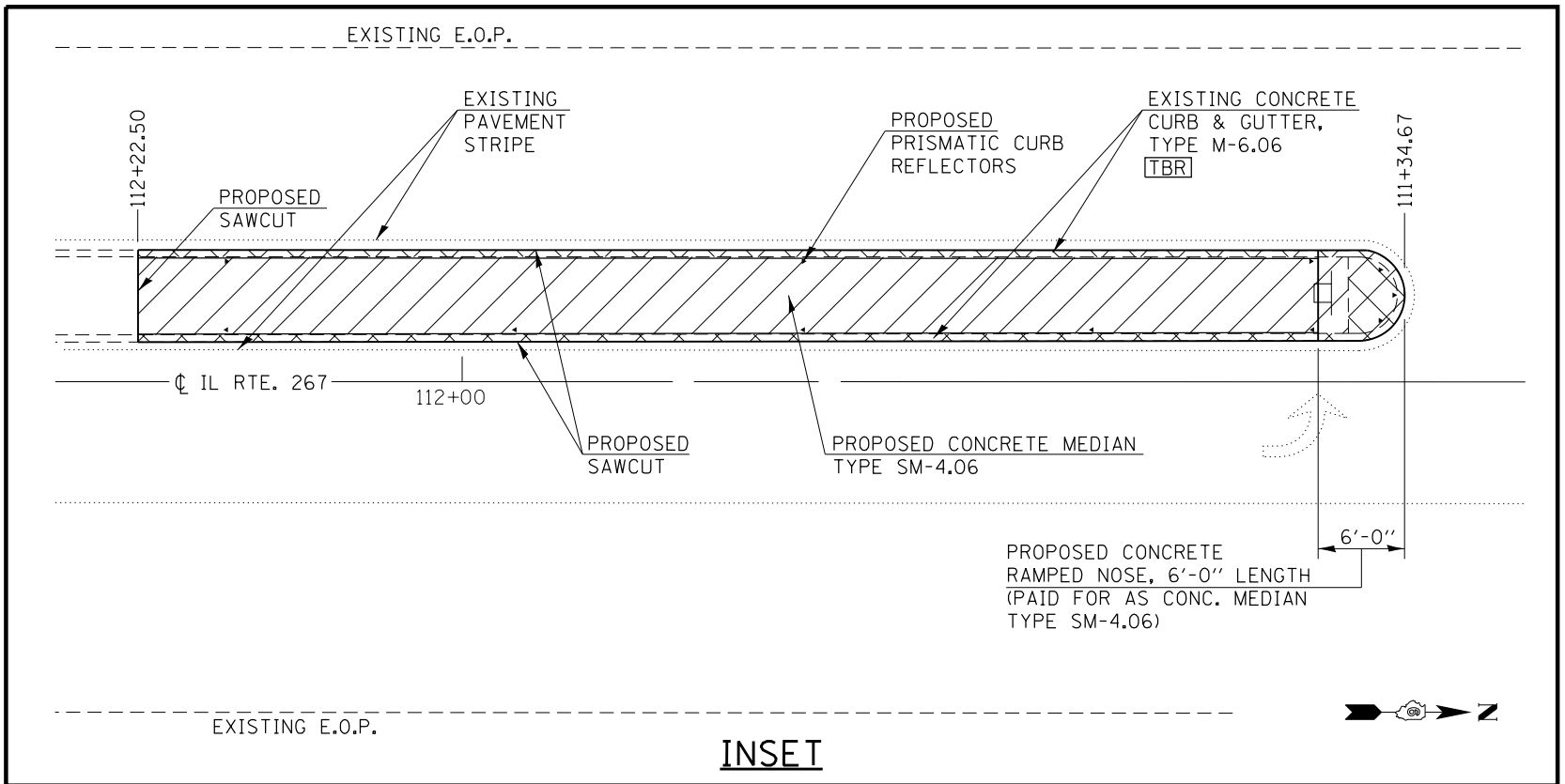
**TYPICAL CROSS SECTION
(LOOKING NORTH)**

BILL OF MATERIALS			
CODE #	ITEM	UNIT	QUANTITY
20200110	EARTH EXCAVATION	CU YD	20.0
44000500	COMBINATION CURB AND GUTTER REMOVAL	FOOT	178.0
78200300	PRISMATIC CURB REFLECTOR	EACH	11
X4402020	CONCRETE MEDIAN SURFACE REMOVAL	SQ FT	464.2
X6065701	CONCRETE MEDIAN TYPE SM-4.06	SQ FT	552.1

TYPICAL CROSS SECTION LEGEND

- (A) EXISTING STABILIZED SUBBASE, 4"
- (B) EXISTING P.C.C. PAVEMENT, 8"
- (C) EXISTING HMA SURFACE, 2 1/2"
- (D) EXISTING CONCRETE CURB & GUTTER, TYPE M-6.06 [TBR]
- (E) EXISTING CONCRETE MEDIAN SURFACE, 4" [TBR]
- (F) EXISTING STABILIZED SHOULDER, 8"
- (1) PROPOSED CONCRETE MEDIAN TYPE SM-4.06
- (2) PROPOSED PRISMATIC CURB REFLECTORS

NOTES:
THE PROPOSED ELEVATION FOR THE TOP OF PROPOSED CONCRETE MEDIAN TYPE SM-4.06 SHALL MEET THE ELEVATION FOR THE TOP OF THE EXISTING CONCRETE MEDIAN SURFACE.
ALL SAWCUTS ARE INCLUDED IN THE COSTS FOR COMBINATION CURB AND GUTTER REMOVAL.



INSET

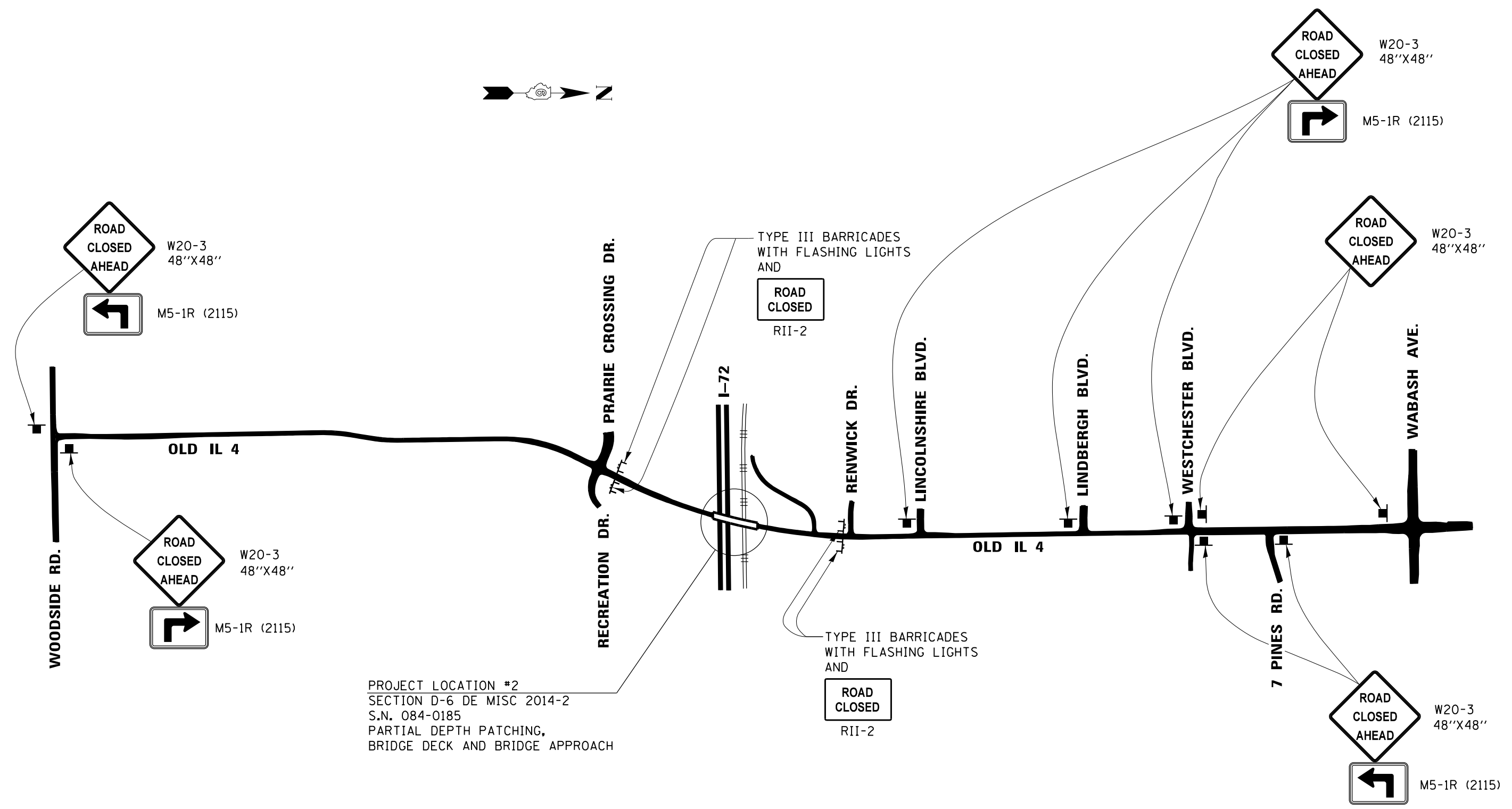
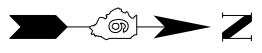
FILE NAME =	USER NAME = kelleyjb	DESIGNED - RTS	REVISED -
et:\pw\work\p\midot\kelleyjb\d0368042\0672	G66-sht-plan.dgn	DRAWN - RTS	REVISED -
Default	PLOT SCALE = 200.0000' / in.	CHECKED -	REVISED -
	PLOT DATE = Feb-25-2014 09:10:32AM	DATE - 11-29-13	REVISED -

**STATE OF ILLINOIS
DEPARTMENT OF TRANSPORTATION**

PROJECT DETAILS			
LOCATION #3, IL 267			
SCALE:	SHEET 2	OF 2 SHEETS	STA. TO STA.

F.A. RTE.	SECTION	COUNTY	TOTAL SHEETS	SHEET NO.
	D6 DE MISC 2014-2	**	12	11
			CONTRACT NO. 72G66	
ILLINOIS FED. AID PROJECT				

• FAP 75
• MORGAN



PROJECT LOCATION #2
 SECTION D-6 DE MISC 2014-2
 S.N. 084-0185
 PARTIAL DEPTH PATCHING,
 BRIDGE DECK AND BRIDGE APPROACH

NOTE:
 ADVANCED ROAD CLOSURE SIGNING AND TYPE III BARRICADES WILL NOT
 BE PAID FOR SEPARATELY BUT SHALL BE INCLUDED IN THE CONTRACT
 UNIT COSTS FOR TRAFFIC CONTROL AND PROTECTION STANDARD BLR-21.

* FAU 8006 OVER FAI 72
 ** SANGAMON

FILE NAME = c:\pwork\work\pwork\sparksgw\0368042\06720666-sht-ts.dgn	USER NAME = sparksgw	DESIGNED - RTS	REVISED -	STATE OF ILLINOIS DEPARTMENT OF TRANSPORTATION	ROAD CLOSURE SIGNING OLD IL RTE. 4			F.A. RTE.	SECTION	COUNTY	TOTAL SHEETS	SHEET NO.
	PLOT SCALE = 1200.0000 ' / in.	CHECKED -	REVISED -		SCALE:	SHEET 1	OF 1	SHEETS	STA.	TO STA.	**	12
Default	PLOT DATE = Feb-07-2014 02:21:11PM	DATE - 1-31-14	REVISED -					CONTRACT NO. 72G66				
ILLINOIS FED. AID PROJECT												