

F.A. RTE.	SECTION	COUNTY	TOTAL SHEETS	SHEET NO.
VAR	D6 SIGNING 2014	VARIOUS	37	1
ILLINOIS			CONTRACT NO. 72G77	
• VARIOUS				

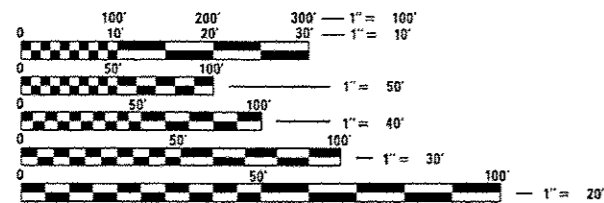
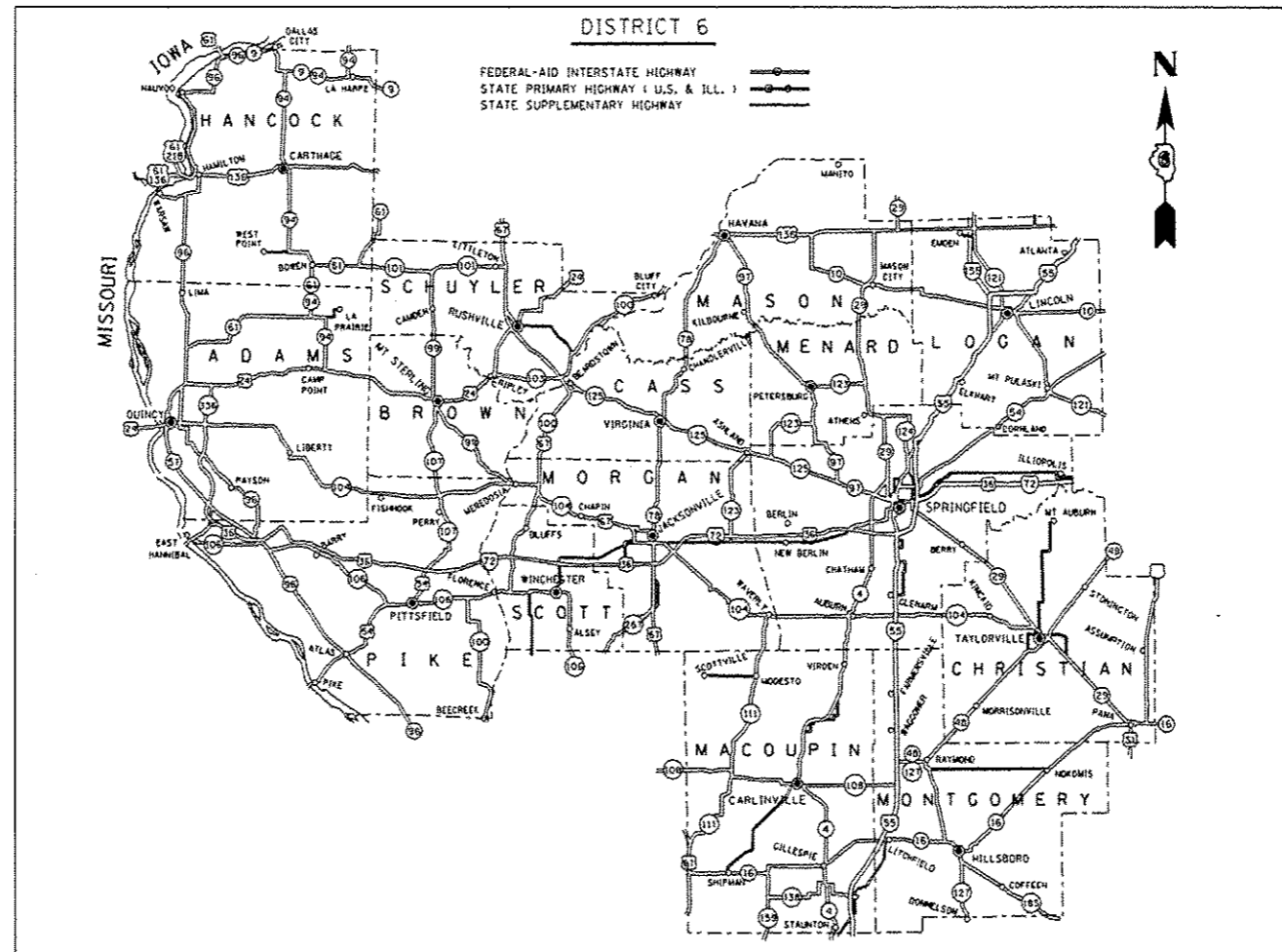
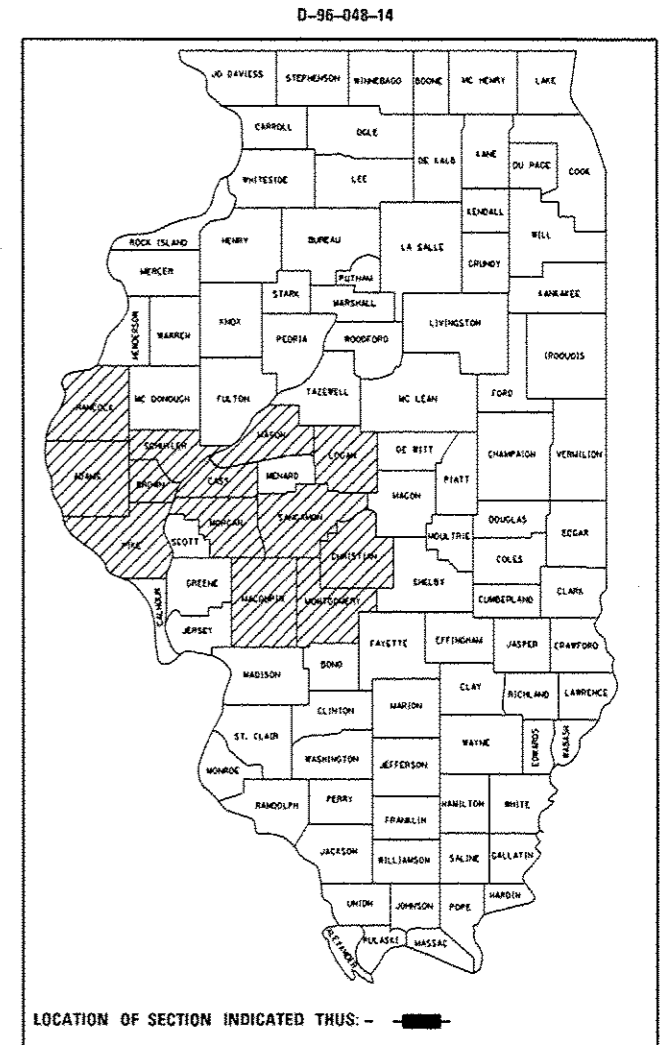
**STATE OF ILLINOIS**  
**DEPARTMENT OF TRANSPORTATION**  
**DIVISION OF HIGHWAYS**

**PROPOSED**  
**HIGHWAY PLANS**

**VARIOUS ROUTES**  
**SECTION D6 SIGNING 2014**  
**PROJECT ACHSIP-0005(986)**  
**VARIOUS LOCATIONS IN DISTRICT 6**  
**(INSIDE AND OUTSIDE SPRINGFIELD MPO)**  
**VARIOUS COUNTIES**

C-96-048-14

FOR INDEX OF SHEETS, SEE SHEET NO. 2



FULL SIZE PLANS HAVE BEEN PREPARED USING STANDARD ENGINEERING SCALES. REDUCED SIZED PLANS WILL NOT CONFORM TO STANDARD SCALES. IN MAKING MEASUREMENTS ON REDUCED PLANS, THE ABOVE SCALES MAY BE USED.

J.U.L.I.E.  
 JOINT UTILITY LOCATION INFORMATION FOR EXCAVATION  
 1-800-892-0123  
 OR 811

SENIOR ENGINEER: MARK DUST (217) 785-0597  
 TEAM LEADER: GLENN STARKE (217) 524-0086

CONTRACT NO. 72G77

STATE OF ILLINOIS  
 DEPARTMENT OF TRANSPORTATION  
 DIVISION OF HIGHWAYS

SUBMITTED *February 4, 2014*  
*Samuel L. Driskell*  
 DEPUTY DIRECTOR OF HIGHWAYS, REGION ENGINEER

*March 21, 2014*  
*John D. Baranzelli, P.E.*  
 ENGINEER OF DESIGN AND ENVIRONMENT

*March 21, 2014*  
*Omer Osman, P.E.*  
 DIRECTOR OF HIGHWAYS, CHIEF ENGINEER

**PRINTED BY THE AUTHORITY**  
**OF THE STATE OF ILLINOIS**