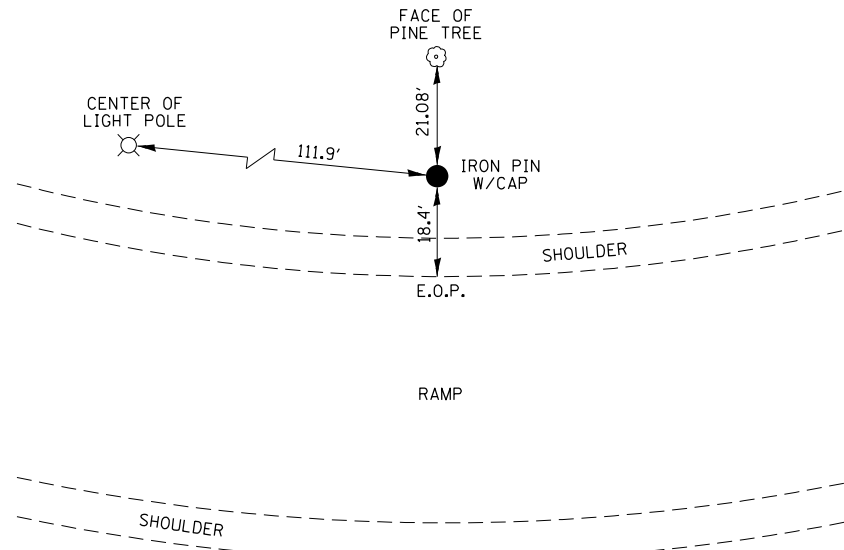
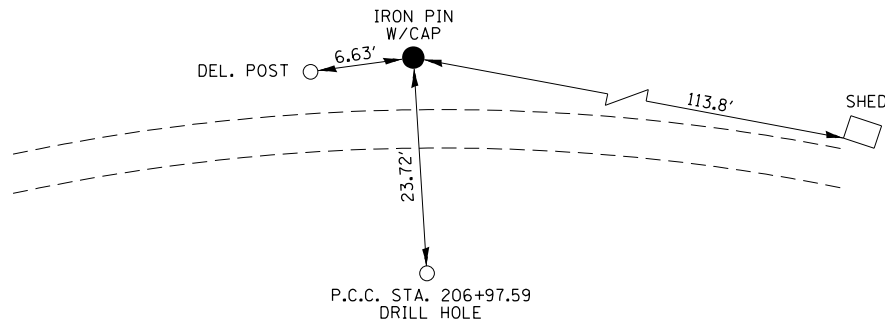


TRA. STA. 400  
(NORTH SIDE - WEST BOUND)



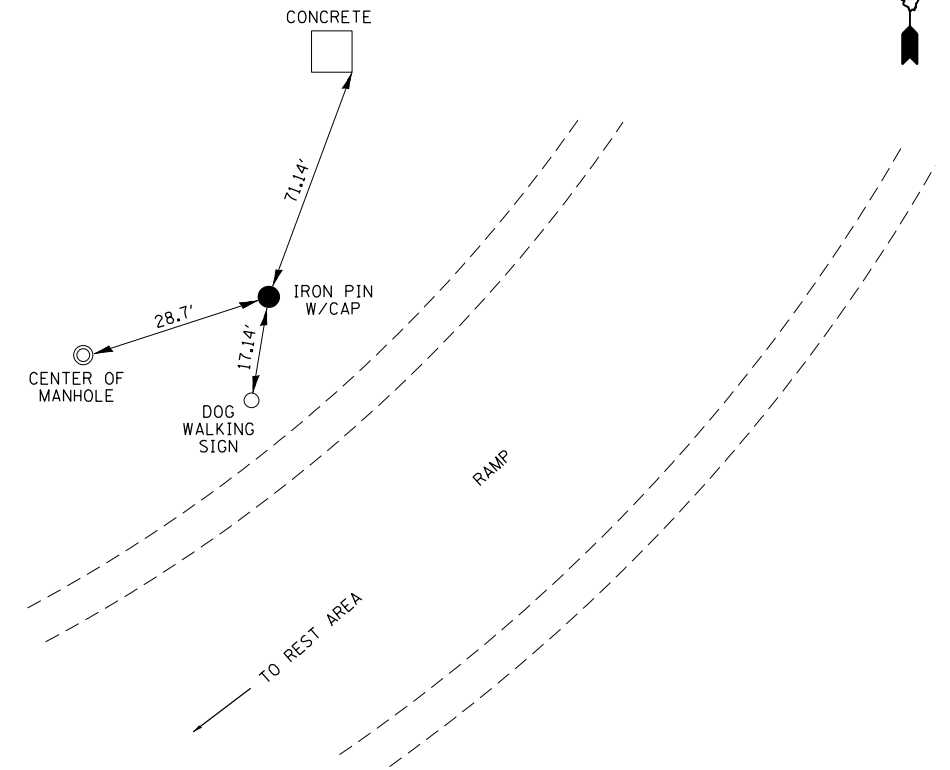
NOTE: NOT TO SCALE

TRA. STA. 401  
(NORTH SIDE - WEST BOUND)



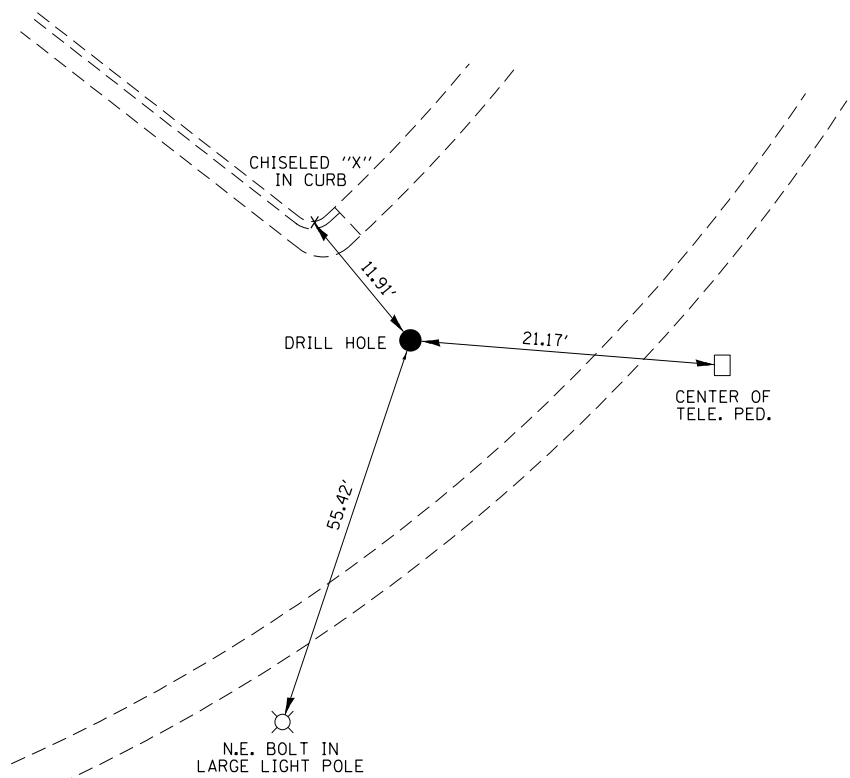
NOTE: NOT TO SCALE

TRA. STA. 402  
(NORTH SIDE - WEST BOUND)



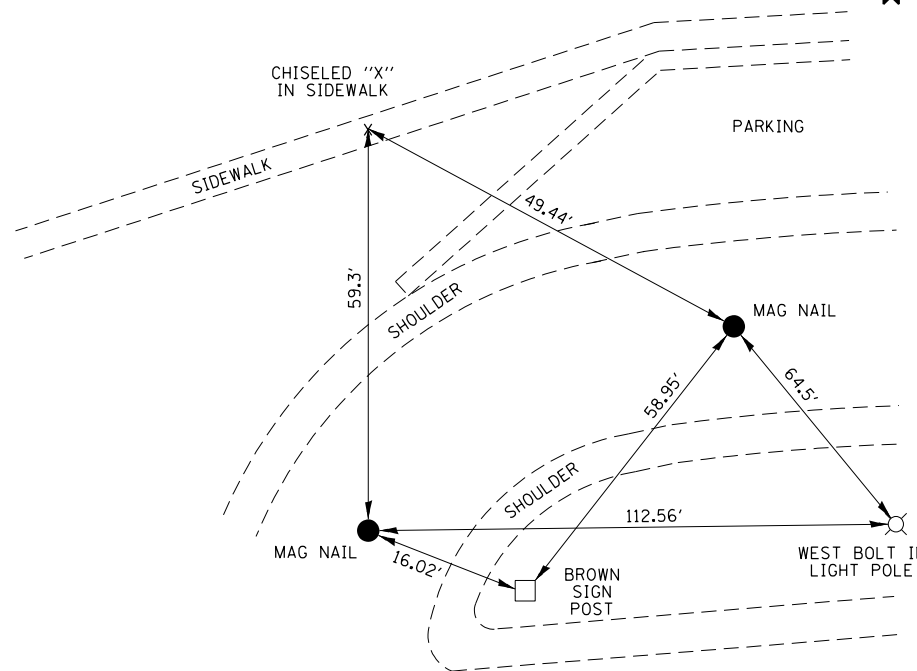
NOTE: NOT TO SCALE

P.T. STA. 212+35.64 (#142)  
(NORTH SIDE - WEST BOUND)



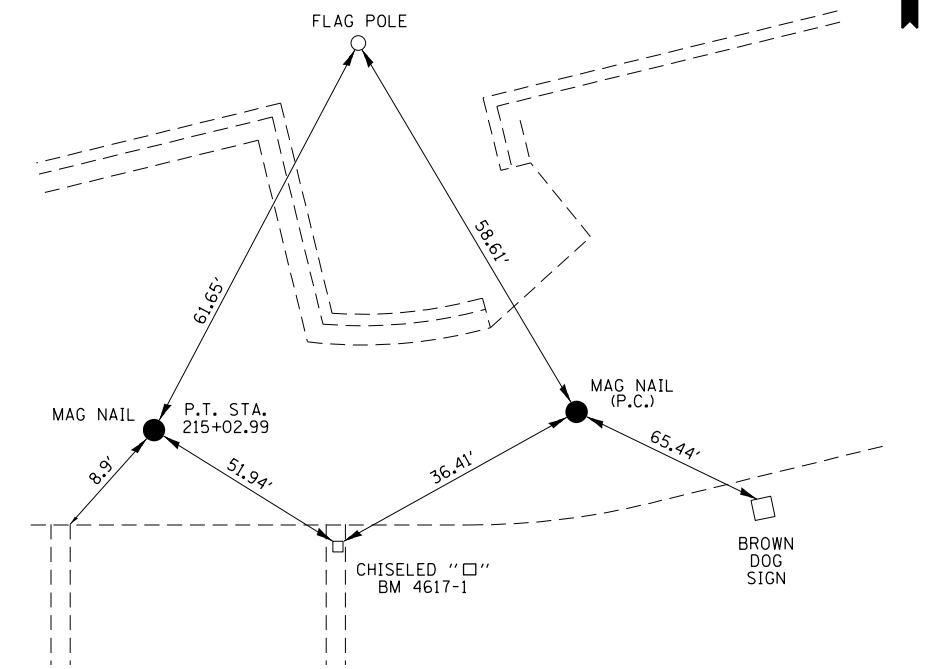
NOTE: NOT TO SCALE

P.C. STA. 216+34.60 (#134) &  
P.T. STA. 217+01.81 (#135)  
(NORTH SIDE - WEST BOUND)



NOTE: NOT TO SCALE

P.C. STA. 214+23.72 (#138)  
(NORTH SIDE - WEST BOUND)



NOTE: NOT TO SCALE

FILE NAME =	USER NAME = steffenmk	DESIGNED -	REVISED -
c:\pw\work\p\dot\stef\enmk\dms67466\074284-sht-ties.dgn		DRAWN -	REVISED -
Default	PLOT SCALE = 100.0000' / in.	CHECKED -	REVISED -
	PLOT DATE = 1/28/2014	DATE -	REVISED -

STATE OF ILLINOIS  
DEPARTMENT OF TRANSPORTATION

TIE POINTS  
WEST BOUND I-72 REST AREA

SCALE: N/A SHEET 1 OF 4 SHEETS STA. TO STA.

F.A.I. RTE.	SECTION	COUNTY	TOTAL SHEETS	SHEET NO.
72	(58-66)RA-I-1	MACON	56	10
CONTRACT NO. 74284				
ILLINOIS FED. AID PROJECT				