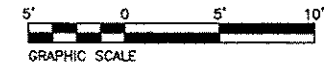
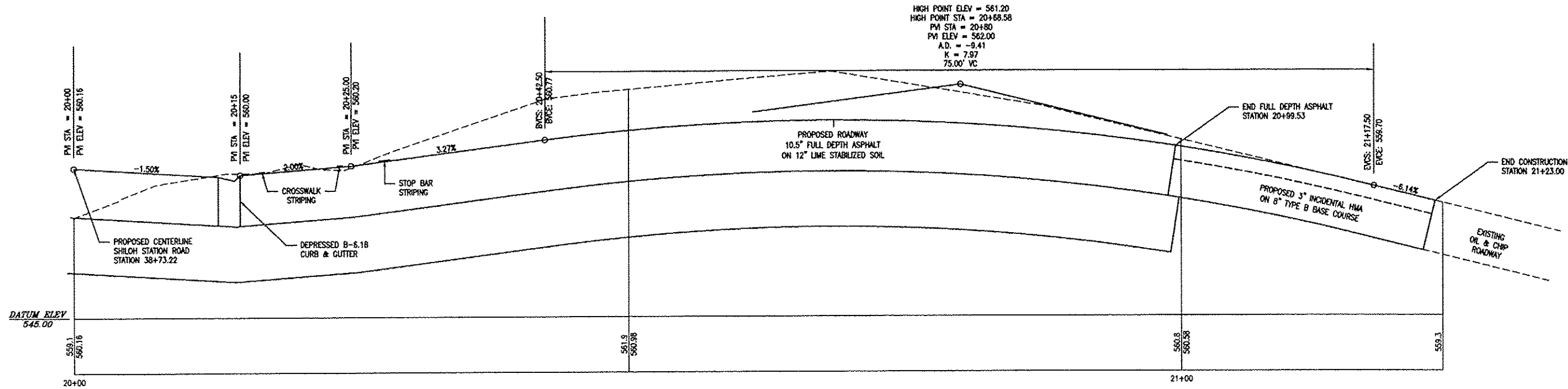
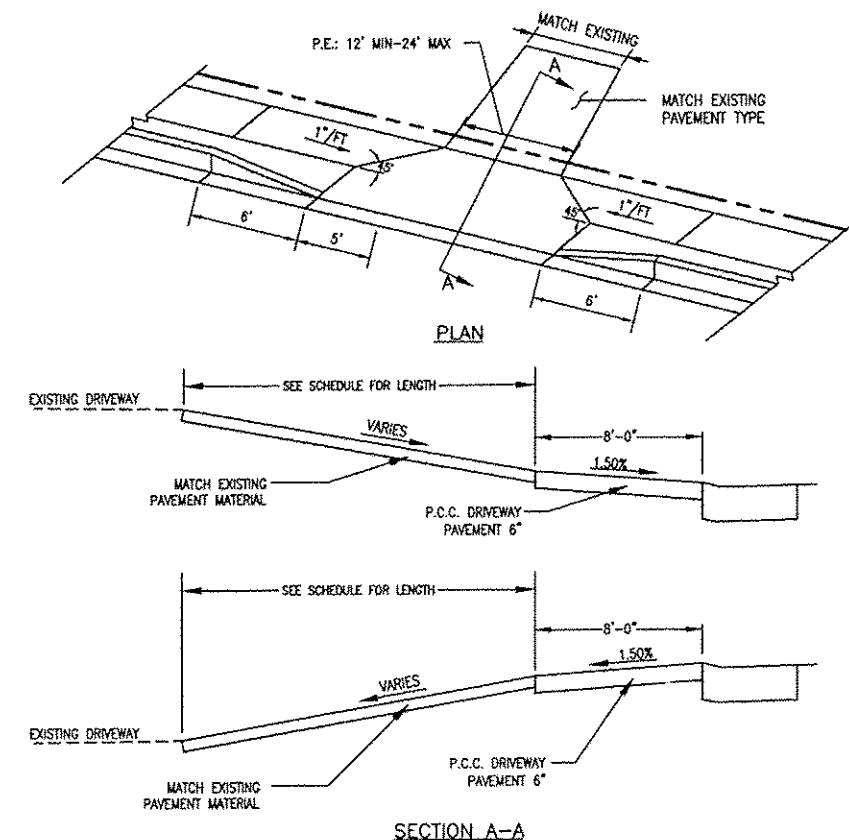


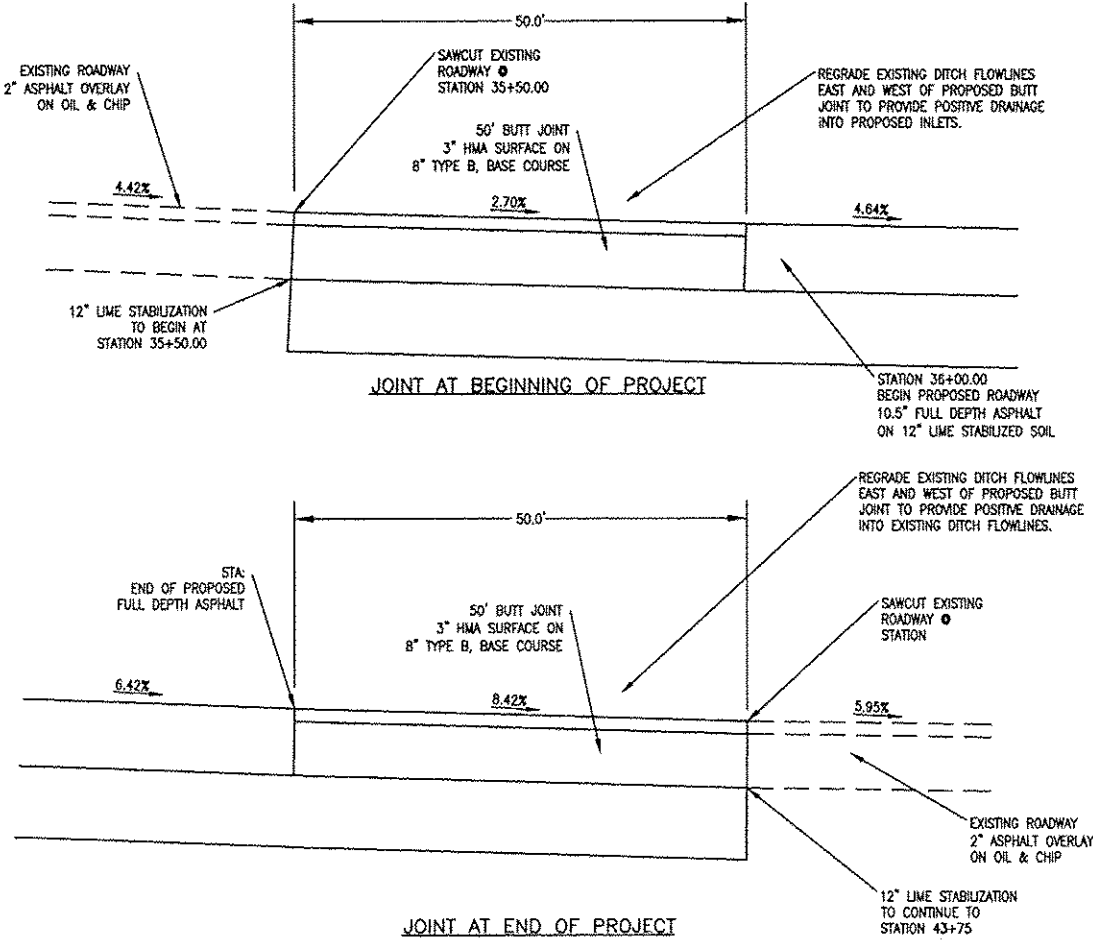
JOHNSON ROAD PROFILE



DETAIL OF PRIVATE ENTRANCES (8' APRON)



NOTES:
 1. CONCRETE DRIVEWAY PAVEMENT MUST BE PLACED EVEN WITH THE BACK OF SIDEWALK
 2. ALL ENTRANCES INTERSECT THE MAINLINE AT 90 DEGREES



THOUVENOT, WADE & MOERCHEN, INC.
 ENGINEERS ♦ SURVEYORS ♦ PLANNERS



- CORPORATE OFFICE**
 4940 OLD COLLINSVILLE RD.
 SWANSEA, ILLINOIS 62226
 TEL (618) 624-4488
 FAX (618) 624-6688
 corp@twm-inc.com
- WATERLOO OFFICE**
 113 SOUTH MAIN STREET
 WATERLOO, ILLINOIS 62298
 TEL (618) 939-5050
 FAX (618) 939-3938
 waterloo@twm-inc.com
- EDWARDSVILLE OFFICE**
 1015B CENTURY DRIVE
 EDWARDSVILLE, ILLINOIS 62025
 TEL (618) 656-4040
 FAX (618) 656-4343
 edwardsville@twm-inc.com
- ST. CHARLES OFFICE**
 400 N. 5TH STREET, SUITE 101
 ST. CHARLES, MISSOURI 63301
 TEL (636) 724-8300
 FAX (636) 724-8304
 stlouis@twm-inc.com

PROFESSIONAL REGISTRATIONS	LICENSE NO.
ILLINOIS PROFESSIONAL DESIGN FIRM	194-001220
PROFESSIONAL ENGINEERING CORP.	02-035370
PROFESSIONAL STRUCTURAL ENGR. CORP.	81-005202
ILLINOIS PROF. LAND SURVEYING CORP.	048-000029
MISSOURI PROFESSIONAL ENGR. CORP.	NO 001528
MISSOURI LAND SURVEYING CORP.	NO 000346

SEAL

Signature: _____
 Signature Date: _____
 Expiration Date: _____

STATEMENT OF RESPONSIBILITY
 I hereby confirm that the document herein to be authorized by my seal is restricted to this sheet, and I hereby disclaim any responsibility for all other drawings, specifications, estimates, reports or other documents or instruments relating to or intended to be utilized for any other part of the architectural, engineering or survey project.

TITLE: **SHILOH STATION ROAD PHASE 3 INTERSECTION AND MISC. DETAILS**
 12-00011-03-PV

PROJECT: **SHILOH STATION ROAD RECONSTRUCTION VILLAGE OF SHILOH ST. CLAIR COUNTY, ILLINOIS**

REV.	DATE	DESCRIPTION

DRAWN BY: NTS	SHEET 18
DESIGNED BY: NTS	OF 23 SHEETS
CHECKED BY:	PROJECT DESCRIPTION
APPROVED BY:	PROJECT NUMBER T01100602
<input checked="" type="checkbox"/> ISSUED FOR REVIEW	<input type="checkbox"/> ISSUED FOR BIDDING
<input type="checkbox"/> ISSUED FOR CONSTR.	<input type="checkbox"/> RECORD DRAWING

P:\100602\4-CADD - DWG\4.2-TR\Drawings\Phase 3\100602 - Phase 3 - Plan and Profiles, Detour, Drainage, Erosion, Marking and Signage, Warping.dwg