

STATE OF ILLINOIS
DEPARTMENT OF TRANSPORTATION
DIVISION OF HIGHWAYS

**PROPOSED
HIGHWAY PLANS**

FAI ROUTE 90/94: I-90/94 (KENNEDY EXPRESSWAY)
SECTION 2012-055BR
I-94 (EDENS EXPRESSWAY) TO DIVISION STREET
JOINT REPAIR, PAVEMENT PATCHING,
SUPERSTRUCTURE REPAIRS, & SUBSTRUCTURE REPAIRS
COOK COUNTY
C-91-017-13

F.A.I. RTE.	SECTION	COUNTY	TOTAL SHEETS	SHEET NO.
90/94	2012-055BR	COOK	107	1

ILLINOIS CONTRACT NO. 60V58
D-91-017-13 *107 & 161 = 168
*168-7 = 161

FOR INDEX OF SHEETS, SEE SHEET NO. 2

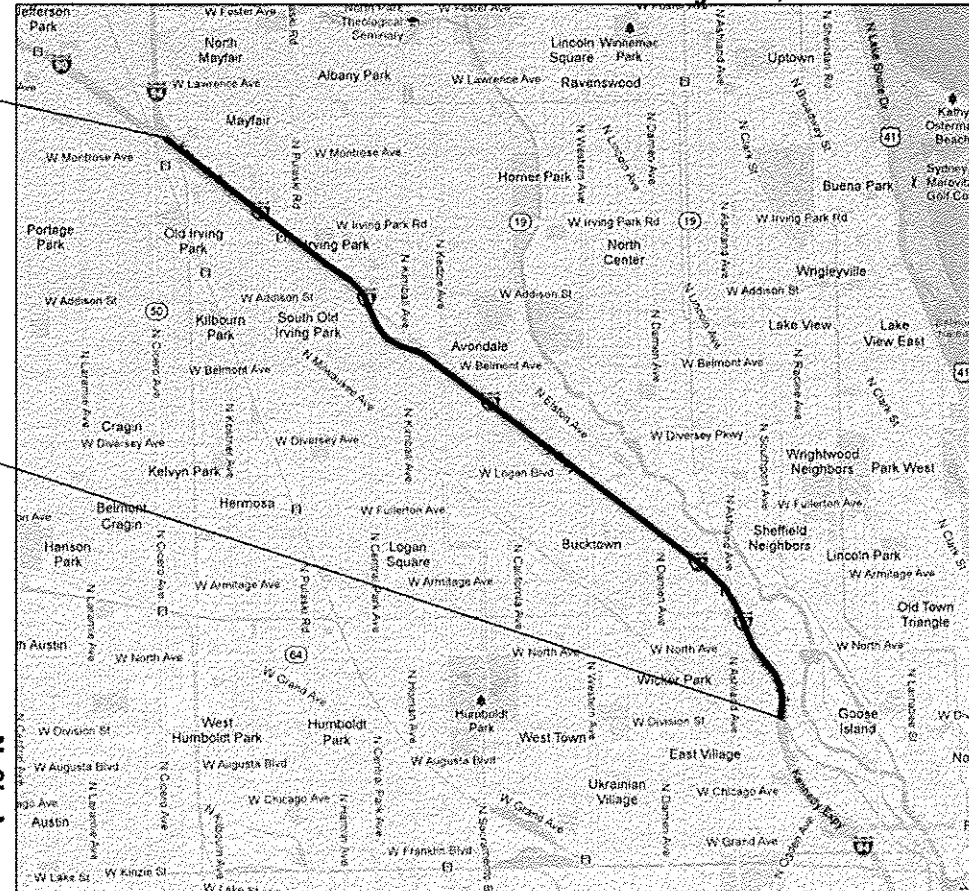
DESIGN DESIGNATION

INTERSTATE
ADT 262,600
SPEED LIMIT 55 MPH

IMPROVEMENT LOCATED IN
THE CITY OF CHICAGO

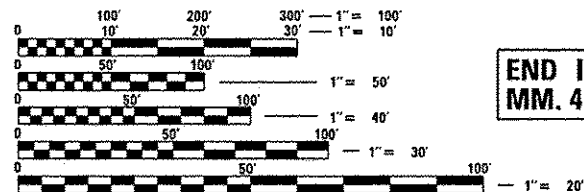


CHICAGO TOWNSHIP Range 13E, 14E - 3rd. PM



BEGIN IMPROVEMENTS
MM. 43 + 28

END IMPROVEMENTS
MM. 49 + 80



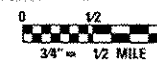
FULL SIZE PLANS HAVE BEEN PREPARED USING STANDARD ENGINEERING SCALES. REDUCED SIZED PLANS WILL NOT CONFORM TO STANDARD SCALES. IN MAKING MEASUREMENTS ON REDUCED PLANS, THE ABOVE SCALES MAY BE USED.

C.U.A.N.
CHICAGO UTILITY ALERT NETWORK
(312) 744-7000

PROJECT MANAGER: MR. ISSAM RAYYAN, P.E. (847) 705-4178
PROJECT ENGINEER: MR. ROBERT T. BORO, P.E. (847) 705-4237

CONTRACT NO. 60V58

GROSS LENGTH = 34,425.6 FT. = 6.52 MILE
NET LENGTH = 34,425.6 FT. = 6.52 MILE



STATE OF ILLINOIS
LICENSED PROFESSIONAL ENGINEER
COLLINS ENGINEERS, INC.
JAMES M. HAMELKA
NO. 81-6116
EXPIRES 11-30-2014

STATE OF ILLINOIS
LICENSED PROFESSIONAL ENGINEER
COLLINS ENGINEERS, INC.
MATTHEW G. REMPFER
NO. 062-054553
EXPIRES 11-30-2013

COLLINS ENGINEERS
123 N. WACKER DR., SUITE 900
CHICAGO, IL 60606
(312) 704-9300
ILLINOIS PROFESSIONAL DESIGN FIRM
LICENSE NO. 184-000993

STATE OF ILLINOIS
DEPARTMENT OF TRANSPORTATION
DIVISION OF HIGHWAYS
SUBMITTED December 20 20 12
John Fortmann Jr.
DEPUTY DIRECTOR OF HIGHWAYS, REGION ENGINEER
March 22 20 13
John D. Baranzoli, P.E.
ENGINEER OF DESIGN AND ENVIRONMENT
March 22 20 13
Omer Osman, P.E., Jr.
DIRECTOR OF HIGHWAYS, CHIEF ENGINEER

PRINTED BY THE AUTHORITY
OF THE STATE OF ILLINOIS

Rev. 4-15-13

INDEX OF SHEETS

1	Cover Sheet
2	General Notes, Index of Sheets, and Highway Standards
3-5	Summary of Quantities
* 6-10	Traffic Control Plan
11	Pavement Patch Detail
12-15	Patching Schedules
16-17	SN 016-2574 Structural Plans
18-24	SN 016-0111 & 016-0112 Structural Plans
25-26	SN 016-0113 & 016-0114 Structural Plans
27-28	SN 016-0115 & 016-0116 Structural Plans
29-34	SN 016-0117 & 016-0118 Structural Plans
35-36	SN 016-0120 & 016-1109 Structural Plans
37-38	SN 016-0121 & 016-0122 Structural Plans
39-44	SN 016-0123 & 016-1071 Structural Plans
45-46	SN 016-0124, 016-1076, & 016-1077 Structural Plans
47-48	SN 016-0125, 016-1073, & 016-1078 Structural Plans
49-50	SN 016-0127 Structural Plans
51-54	SN 016-2654 Structural Plans
55-56	SN 016-0128 Structural Plans
57-58	SN 016-0129 Structural Plans
59-60	SN 016-0130 Structural Plans
61-62	SN 016-0131 Structural Plans
63-64	SN 016-0132 Structural Plans
65-95	SN 016-0133 Structural Plans
96-97	SN 016-0134 Structural Plans
* 98-99	SN 016-0135 Structural Plans
100	TC08 - Freeway Entrance and Exit Ramp Closure Details
101	TC09 - Freeway Single and Multi-Lane Weave
102	TC11 - Raised Reflective Pavement Markers (Snow Plow Resistant)
103-104	TC12 - Multi-Lane Freeway Pavement Markings
105	TC17 - Traffic Control for Shoulder Closures and Partial Ramp Closures
106	TC22 - Arterial Road Information Sign
107	TC25 - Traffic Control Detail for Freeway Center Lane Closure Shoulder Lane

* 99A-99KK Added Existing Traffic Surveillance Plans

INDEX OF HIGHWAY STANDARDS

Standard No.	Description
420001-07	Pavement Joints
442001-04	Class A Patching
701400-06	Approach to Lane Closure, Freeway / Expressway
701401-07	Lane Closure, Freeway / Expressway
701411-08	Lane Closure, Multi Lane, Intermittent or Moving Operations, for Speeds >= 45 mph.
701426-05	Lane Closure, Freeway / Expressway, Two Lane Closure
701501-06	Urban Lane Closure, 2L, 2W Undivided
701606-08	Urban Lane Closure, 2W with Mountable Median
701801-05	Sidewalk, Corner, or Crosswalk Closure
701901-07	Traffic Control Devices

701101-03
701446-04
780001-03

* DELETE 5A, 5B, 5C, 6, 8, 9, 10

GENERAL NOTES

- Before starting any excavation, the Contractor shall contact "J.U.L.I.E." at (800) 892-0123 or 811 for field locations of buried electric, telephone, and gas facilities. 48 hour notification is required.
- The plans do not represent a complete depiction of all utilities that may be impacted by the proposed work. The Contractor shall conduct his or her own investigation to determine the ownership of impacted utilities. The Contractor shall coordinate with the utility owners and may be required to provide temporary support, adjust, relocate or remove utilities that are impacted by the proposed improvement. This work shall be considered incidental to the project.
- The Contractor will not be allowed to set up a yard or field office on State property without written permission from the Department.
- Where artificial lighting is utilized in night operations, the Contractor shall exercise the utmost precautions in preventing adverse visibility to the motoring public and adjoining residential areas.
- All damage to existing pavement markings or raised reflective pavement markers outside the patch lane shall be replaced at the Contractors expense.
- Before beginning any work, the Contractor shall retain and record for future reference, all existing pavement marking lines, symbols and letters (and raised reflective markers) in order that these locations can be re-established for striping. Exact locations of all pavement markings and raised reflective pavement markers shall be as directed by the Engineer.
- Drainage adjustment or reconstruction locations will be determined in the field by the Engineer.
- These plans have been prepared from notes received from IDOT Field Maintenance Engineers.
- Plan dimensions and details relative to existing plans are subject to routine variations. The Contractor shall field verify existing dimensions and details affecting new construction and make necessary approved adjustments prior to construction or ordering of materials. Such variations shall not be cause for additional compensation for a change in scope of the work. However, the Contractor will be paid for the quantity actually furnished based upon the unit price bid for the work.
- Pavement patching shall not disturb the existing pavement base. Any restoration of Contractor disturbed base shall be done at the Contractor's expense.
- The Contractor shall obtain approval from the District One Bureau Chief of Maintenance for any proposed revisions in the schedule pavement patching locations.
- Do not scale these plans for construction purposes.
- Use #8 epoxy-coated tie bars, conforming to Art. 1006.10 of the Standard Specifications for all the tie bars. Use the "Longitudinal Construction Joint (Tie Bar Grouted In Place) detail shown on Highway Standard 420001 for all longitudinal joints.
- The Contractor shall maintain the existing lighting for the duration of the contract. Cost included in the pay item "Protect and Maintain Existing Underpass Luminaire".
- 10 ft (3 m) transitions shall be used to match proposed items of work to existing items in the field, unless otherwise shown. The transitions shall be paid for at the contract unit price for the proposed item of work specified.
- The Resident Engineer must contact the IDOT Traffic Control Supervisor at (847) 705-4155 at least 2 weeks prior to installation of the temporary control devices on 1-90/94.
- The Resident Engineer shall contact the Area Traffic Field Engineer at (847) 705-4412 at least two (2) weeks prior to the placement of permanent pavement markings
- All pavement markings and raised reflectors affected by the pavement patching shall be replaced. Nominal quantities have been included in the contract for this work.

GENERAL NOTES (CONT.)

- The minimum Class A Patch dimensions shall be the length of 4.5 feet and a width that includes half the width of the travel way.
- For work outside the bridge approach pavement, all references in the Highway Standards and Standard Specifications for reinforcement, Dowel Bars and Tie Bars in pavement, shoulders, curb and gutter and median, chair supports for CRC Pavement, shall be Epoxy Coated, unless noted on the plans.

GENERAL NOTES (City of Chicago)

- Before starting any excavation within the City of Chicago, the contractor shall contact "C.U.A.N." (Chicago Utility Alert Network) at (312) 744-7000 for field locations of buried electric, telephone, and gas facilities. 48 hour notification is required.

GENERAL NOTES (CONT.)

- The Contractor shall call for a one-time cable locate of the IDOT District One Electrical Facilities by the IDOT Electrical Maintenance Contractor at (773) 287-7600 prior to start of work.
- There are several surveillance loops potentially in conflict with the proposed patch locations as listed below. As-Built surveillance drawings are included in the contract for Contractor Information Only. The contractor shall perform his/her own investigation and submit to the Engineer for approval prior to ordering materials to determine if the surveillance facilities will be in conflict. The cost of this work shall be incidental to the contract.
- The list of potential surveillance loop conflicts are:
 Montrose Ave (Inbound Direction)
 Addison St. (Inbound Direction)
 Addison St. (Reversible Lanes)
 Kimball St. (Inbound Direction)
 California St. (Outbound Direction)
 Diversey Ave. (Inbound Direction)
 Western Ave. (Reversible Lanes)
 Fullerton Ave. (Inbound Entrance Ramp)
 Armitage Ave. (Inbound Entrance Ramp)
 Division St. (Inbound Direction)
 Division St. (Outbound Direction)
 Division St. (Reversible Lanes)
- All surveillance loops in conflict should be re-cut on the same weekend the patches are poured. Time should be allocated to perform this operation prior to removing the traffic control.
- There is a potential surveillance conflict with the west abutment at Sacramento Blvd. Quantities have been included in the contract to replace the conduit and wire that is in conflict. As-Built drawings of the junction boxes and location of the conduit/wire conflict are included for Contractor Information.

Rev. 4-15-13

COLLINS ENGINEERS 1111 N. Dearborn St., Suite 100 Chicago, IL 60610 Tel: (773) 781-7010 Fax: (773) 781-7010 www.collinseng.com	USER NAME *	DESIGNED - AMS	REVISED -	STATE OF ILLINOIS DEPARTMENT OF TRANSPORTATION	INDEX OF SHEETS, STATE STANDARDS, AND GENERAL NOTES	DATE	SECTION	COUNTY	TOTAL SHEETS	SHEET NO.
	PLOT SCALE *	DRAWN - AMS	REVISED -			90/94	2012-0558R	COOK	107	2
	PLOT DATE *	CHECKED - JMH	REVISED -							CONTRACT NO. 60V58
		DATE - DECEMBER 2012	REVISED -							ILLINOIS FED. AID PROJECT

Rev.

CODE NO.	ITEM	UNIT	TOTAL QUANTITY	CONSTRUCTION TYPE CODE 100% STATE																			
				ROADWAY 0004	BRIDGE 0014	BRIDGE 0014	BRIDGE 0014	BRIDGE 0014	BRIDGE 0014	BRIDGE 0014	BRIDGE 0014	BRIDGE 0014	BRIDGE 0014	BRIDGE 0014	BRIDGE 0014	BRIDGE 0014	BRIDGE 0014	BRIDGE 0014	BRIDGE 0014	BRIDGE 0014	BRIDGE 0014	BRIDGE 0014	
				URBAN	016-2574	016-0111 016-0112	016-0113 016-0114	016-0115 016-0116	016-0117 016-0118	016-0120 016-1109	016-0121 016-0122	016-0123 016-1071	016-0124 016-1076 016-1077	016-0125 016-1073 016-1078	016-0127	016-2654	016-0128	016-0129	016-0130	016-0131	016-0132	016-0133	016-0134
70102625	TRAFFIC CONTROL AND PROTECTION, STANDARD 701606	L SUM	1			0.25			0.25			0.25										0.25	
70102640	TRAFFIC CONTROL AND PROTECTION, STANDARD 701801	L SUM	1			0.25			0.25			0.25										0.25	
70106800	CHANGEABLE MESSAGE SIGN	CAL MO	2	2																			
* 78008210	POLYUREA PAVEMENT MARKING TYPE I - LINE 4"	FOOT	960	960																			
* 78008220	POLYUREA PAVEMENT MARKING TYPE I - LINE 5"	FOOT	625	625																			
* 78008240	POLYUREA PAVEMENT MARKING TYPE I - LINE 6"	FOOT	100	100																			
* 78100100	RAISED REFLECTIVE PAVEMENT MARKER	EACH	65	65																			
78300200	RAISED REFLECTIVE PAVEMENT MARKER REMOVAL	EACH	65	65																			
20043800	PRECAST PRESTRESSED CONCRETE T-BEAM REPAIR	SOFT	62																				
X4400100	PORTLAND CEMENT CONCRETE SURFACE REMOVAL (VARIABLE DEPTH)	SQ YD	23	23																			
X4420553	CLASS A PATCHES, TYPE II, 10 INCH (SPECIAL)	SQ YD	259	259																			
X4420557	CLASS A PATCHES, TYPE III, 10 INCH (SPECIAL)	SQ YD	32	32																			
X4420559	CLASS A PATCHES, TYPE IV, 10 INCH (SPECIAL)	SQ YD	267	267																			
X7011015	TRAFFIC CONTROL AND PROTECTION (EXPRESSWAYS)	L SUM	1	1																			

- * 81100605 CONDUIT ATTACHED TO STRUCTURE, FOOT 1209 1209
2" DIAMETER, PVC COATED
GALVANIZED STEEL
- * 81300520 JUNCTION BOX, STAINLESS STEEL ATTACHED TO
STRUCTURE 12 X 8 X 6 EACH 2 2
- * 81702415 ELECTRIC CABLE IN CONDUIT, FOOT 300 300
600V, (XLP-TYPE USE), 3-1/2" NO. 6
- * 81301305 ELECTRIC CABLE IN CONDUIT, FOOT 230 230
LEAD-IN, NO. 14 1 PAIR
- * 81301727 ELECTRIC CABLE NO. 19 6C, FOOT 300 300
COMMUNICATION
- * 8730312 ELECTRIC CABLE IN CONDUIT, FOOT 1664 1664 1664 1664 ▲
LEAD-IN, NO. 18 4/C, TWISTED,
SHIELDED
- * 8850102 INDUCTION LOOP, FOOT 703 703 703 703 ▲

* Specialty Items ▲ Rev. 4-15-13 Rev

COLLINS ENGINEERS <small>123 W. Main St. Chicago, IL 60606 Tel: 312-123-4567 Fax: 312-765-4321 www.collinseng.com</small> <small>ILLINOIS PROFESSIONAL DESIGN FIRM LICENSE NO. 081-000019</small>	USER NAME *	DESIGNED - RC	REVISED -	STATE OF ILLINOIS DEPARTMENT OF TRANSPORTATION	SUMMARY OF QUANTITIES	F.A.I. RTE. 90/94	SECTION 2012-0558R	COUNTY COOK	TOTAL SHEETS 107	SHEET NO. 4	
	PLOT SCALE *	CHECKED - MR	REVISED -			SCALE: SHEET OF SHEETS STA. TO STA.					
	PLOT DATE *	DATE - DECEMBER 2012	REVISED -			ILLINOIS FED. AID PROJECT					
	CONTRACT NO. 60Y58										

CONSTRUCTION TYPE CODE
100% STATE

CODE NO.	ITEM	UNIT	TOTAL QUANTITY	ROADWAY	BRIDGE	BRIDGE	BRIDGE	BRIDGE	BRIDGE	BRIDGE	BRIDGE	BRIDGE	BRIDGE	BRIDGE	BRIDGE	BRIDGE	BRIDGE	BRIDGE	BRIDGE	BRIDGE	BRIDGE	BRIDGE	BRIDGE	
				0004	0014	0014	0014	0014	0014	0014	0014	0014	0014	0014	0014	0014	0014	0014	0014	0014	0014	0014	0014	0014
X7013820	TRAFFIC CONTROL SURVEILLANCE, EXPRESSWAYS	CAL DA	18	18																				
X0210905	PROTECTION AND MAINTENANCE OF EXISTING UNDERPASS LIGHTING	L SUM	1			0.25		0.25		0.25												0.25		
Z0001905	STRUCTURAL STEEL REPAIR	POUND	3310																					3310
Z0012754	STRUCTURAL REPAIR OF CONCRETE (DEPTH EQUAL TO OR LESS THAN 5 INCHES)	SQ FT	17191			130			231				205											16484
Z0012755	STRUCTURAL REPAIR OF CONCRETE (DEPTH GREATER THAN 5 INCHES)	SQ FT	278																					278
Z0021906	SILICONE JOINT SEALER, 1.5"	FOOT	229.0																					229.0
Z0021907	SILICONE JOINT SEALER, 1.75"	FOOT	485							136.5														42.5
Z0021908	SILICONE JOINT SEALER, 2"	FOOT	1518.0			102.0	72.0		84.0				72.0	78.0	12.0	18.0	30.0							30.0
Z0021912	SILICONE JOINT SEALER, 2.5"	FOOT	264			6.0										30.0								78.0
Z0021918	SILICONE JOINT SEALER, 3"	FOOT	222.0						24.0															78.0
Z0030850	TEMPORARY INFORMATION SIGNING	SQ FT	208			52			52				52											52
Z0041895	POLYMER CONCRETE	CU FT	312.3	135.0	1.9	8.5	6.0	2.0	7.0	7.0	6.0	6.5	1.6	4.9	9.0	6.5	6.5	8.0	3.0	4.5	9.0	61.0	6.5	12.5
Z0073200	TEMPORARY SHORING AND CRIBBING	EACH	398						5															393
Z0076604	TRAINEES-TRAINING PROGRAM GRADUATE	HR	1000	1000																				

Z0021902 SILICONE JOINT SEALER, 1" FOOT 42

Z0021910 SILICONE JOINT SEALER, 3" FOOT 222

X0327596 PRECAST PRESTRESSED CONCRETE L SUM I I-BEAM REPAIR 1

X0327577 PROTECT AND MAINTAIN EXISTING UNDERPASS LUMINAIRE L SUM 1 0.25 0.25 0.25 0.25

0042

REV. 4-15-13

Rev.

COLLINS ENGINEERS <small>122 N. Main St., Suite 200, Chicago, IL 60642 Tel: (312) 321-1000 Fax: (312) 321-1001 www.collins-engineers.com</small>	USER NAME :	DESIGNED - RG	REVISED -	STATE OF ILLINOIS DEPARTMENT OF TRANSPORTATION	SUMMARY OF QUANTITIES				F.A.I. RTE. 90/94	SECTION 2012-055BR	COUNTY COOK	TOTAL SHEETS 107	SHEET NO. 5
	PLOT SCALE :	DRAWN - RG	REVISED -						CONTRACT NO. 60V58				
	PLOT DATE :	CHECKED - MR	REVISED -						ILLINOIS FED. AID PROJECT				
		DATE - DECEMBER 2012	REVISED -						SCALE: SHEET OF SHEETS STA. TO STA.				