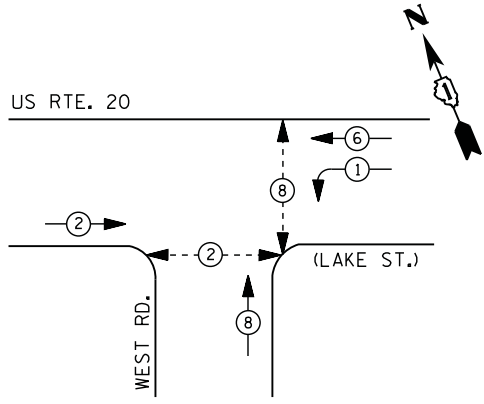


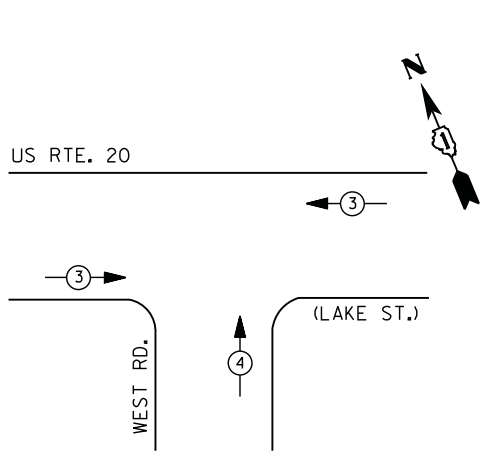
**CONTROLLER SEQUENCE**



**LEGEND**

- DUAL ENTRY PHASE
- PEDESTRIAN PHASE
- SINGLE ENTRY PHASE
- OVERLAP
- \* NUMBER REFERS TO ASSOCIATED PHASE

**PHASE DESIGNATION DIAGRAM**



**EMERGENCY VEHICLE PREEMPTION SEQUENCE**

| EMERGENCY VEHICLE PREEMPTORS |     |   |
|------------------------------|-----|---|
| EMERGENCY VEHICLE PREEMPTOR  | 3   | 4 |
| MOVEMENT                     | ← → | ↑ |

**I. D. O. T.  
 TRAFFIC SIGNAL INSTALLATION  
 ELECTRICAL SERVICE REQUIREMENTS**

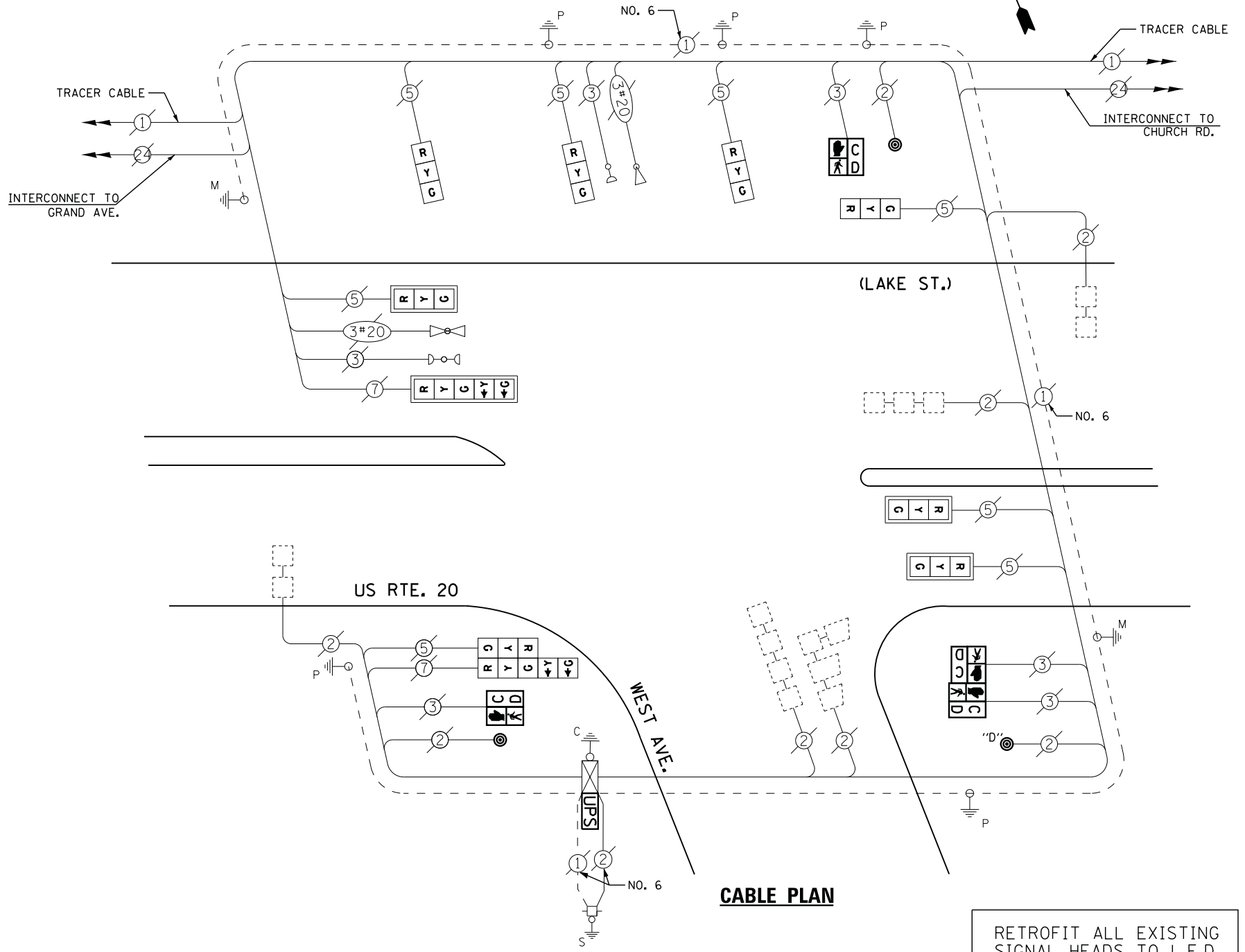
| TYPE         | NO. LAMPS | WATTAGE |     | % OPERATIONS | TOTAL WATTAGE |
|--------------|-----------|---------|-----|--------------|---------------|
|              |           | INCAND. | LED |              |               |
| SIGNAL (RED) | 10        | 135     | 17  | 0.50         | 85            |
| (YELLOW)     | 10        | 135     | 25  | 0.25         | 63            |
| (GREEN)      | 10        | 135     | 15  | 0.25         | 38            |
| ARROW        | 4         | 135     | 12  | 0.10         | 5             |
| PED. SIGNAL  | 4         | 90      | 25  | 1.00         | 100           |
| CONTROLLER   | 1         | 100     | 100 | 1.00         | 100           |
| ILLUM. SIGN  |           | 252     | 25  | 0.05         | --            |
| VIDEO SYSTEM |           | 150     | -   | 1.00         | --            |
| TOTAL =      |           |         |     |              | 391           |

ENERGY COSTS- BILLED TO: IDOT DISTRICT 1  
 201 WEST CENTER COURT  
 SCHAUMBURG, IL 60196-1096

ENERGY SUPPLY - CONTACT JOE STACHO  
 PHONE 630-424-5704  
 COMMONWEALTH EDISON

**SCHEDULE OF QUANTITIES**

| QUANTITY | UNIT | ITEM  |
|----------|------|---|
| 1        | EACH | MAINTENANCE OF EXISTING TRAFFIC SIGNAL INSTALLATION                           |
| 2        | EACH | PEDESTRIAN SIGNAL HEAD, LED, 1-FACE, BRACKET MOUNTED WITH COUNTDOWN TIMER     |
| 1        | EACH | PEDESTRIAN SIGNAL HEAD, LED, 2-FACE, BRACKET MOUNTED WITH COUNTDOWN TIMER     |
| 1        | EACH | MODIFY EXISTING CONTROLLER CABINET  |
| 1        | EACH | REMOVE EXISTING TRAFFIC SIGNAL EQUIPMENT                                      |
| 1        | EACH | UNINTERRUPTABLE POWER SUPPLY, SPECIAL   |
| 1        | EACH | SIGNAL HEAD, LED, 2-FACE, 1-3 SECTION, 1-5 SECTION, BRACKET MOUNTED, RETROFIT |
| 4        | EACH | SIGNAL HEAD, LED, 1-FACE, 3-SECTION, BRACKET MOUNTED, RETROFIT                |
| 3        | EACH | SIGNAL HEAD, LED, 1-FACE, 3-SECTION, MAST ARM MOUNTED, RETROFIT               |
| 1        | EACH | SIGNAL HEAD, LED, 1-FACE, 5-SECTION, MAST ARM MOUNTED, RETROFIT               |
| 3        | EACH | PEDESTRIAN PUSH-BUTTON, NON-LATCHING  |



**CABLE PLAN**

NOTE:  
 PUSH BUTTON "D" SHALL PLACE A CALL IN PHASES 2 AND 8

RETROFIT ALL EXISTING SIGNAL HEADS TO L.E.D.

**REMOVAL OF EXISTING TRAFFIC SIGNAL EQUIPMENT**

THE FOLLOWING ITEMS SHALL BE REMOVED BY THE CONTRACTOR AND SHALL BE DISPOSED OF BY THEM OUTSIDE THE RIGHT-OF-WAY AT THEIR EXPENSE. THE SALVAGE VALUE OF THE REMOVED EQUIPMENT SHALL BE REFLECTED IN THE CONTRACT BID PRICE.

|   |      |                        |
|---|------|------------------------|
| 4 | EACH | PEDESTRIAN SIGNAL HEAD |
| 3 | EACH | PEDESTRIAN PUSH-BUTTON |