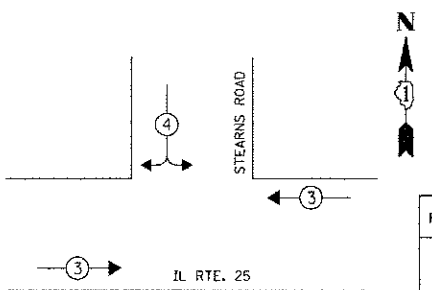


PHASE DESIGNATION DIAGRAM

OVERLAP LETTER	PERMISSIVE PHASE	PROTECTED PHASE
B	= 4 + 5	
* C	=	CONTINUOUS OVERLAP (FREE FLOW RIGHT)

EMERGENCY VEHICLE PREEMPTION SEQUENCE



PROPOSED EMERGENCY VEHICLE PREEMPTORS		
EMERGENCY VEHICLE PREEMPTOR	3	4
MOVEMENT	←	→

I.D.O.T. TRAFFIC SIGNAL INSTALLATION ELECTRICAL SERVICE REQUIREMENTS					TOTAL WATTAGE
TYPE	NO. OF LAMPS	WATTAGE INCAND.	LED	% OPERATION	
SIGNAL (RED)	17	17	0.50		144.50
(YELLOW)	17		25	0.25	106.25
(GREEN)	17	15	0.25		63.75
ARROW	4	12	0.10		4.80
PED. SIGNAL	-	25	1.00		-
CONTROLLER	1	100	1.00		100.00
LUMINAIRE		250	-	0.50	-
FLASHER				0.50	-

ENERGY COSTS TO: TOTAL = 419.30

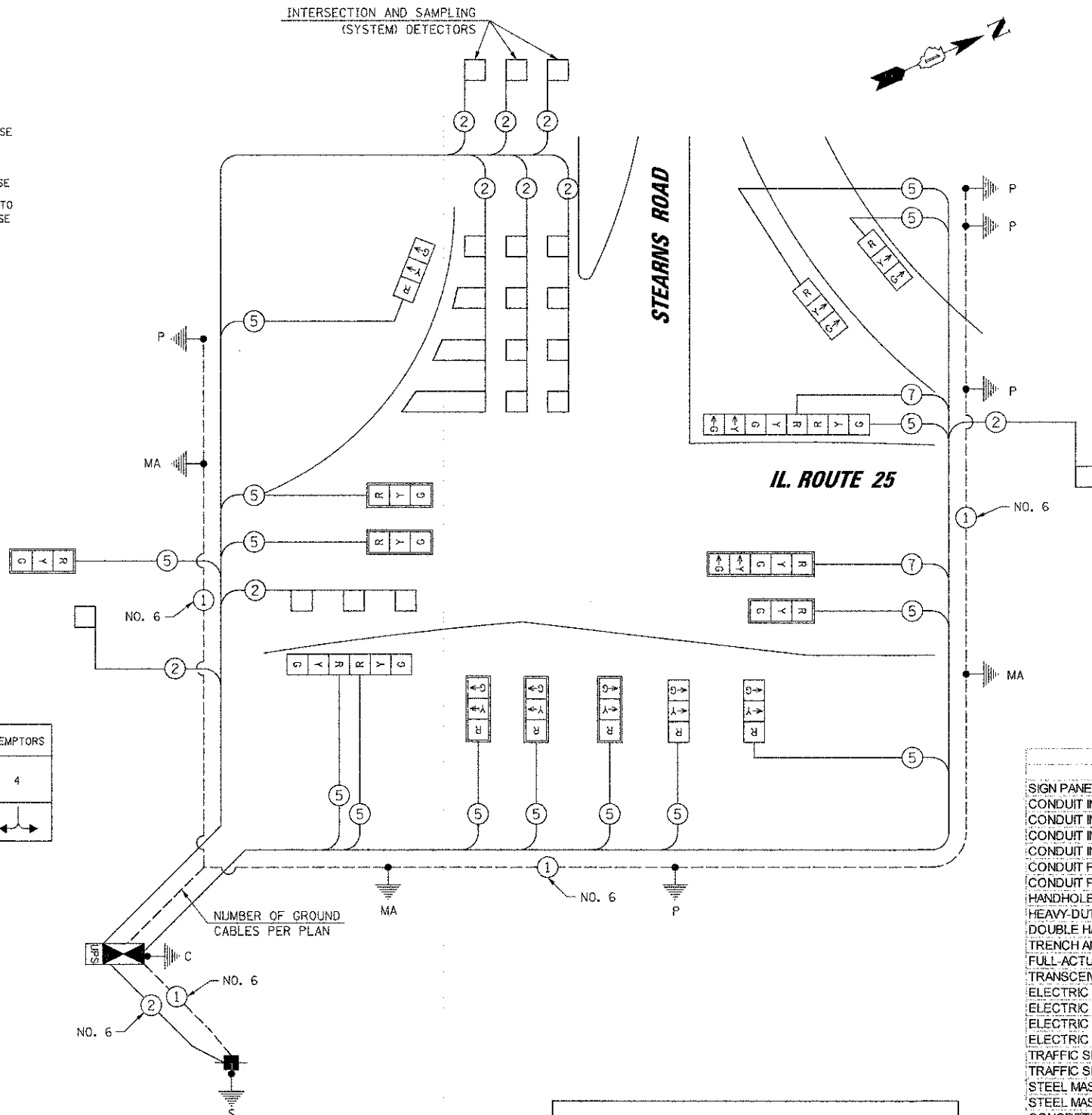
ILLINOIS DEPARTMENT OF TRANSPORTATION

DIVISION OF HIGHWAY/DISTRICT 1
201 WEST CENTER COURT/SCHAUMBURG, ILLINOIS 60196-1096

ENERGY SUPPLY: CONTACT: MARTY RUBIN
PHONE: (847) 608 2400
COMPANY: COMED

FOUNDATION (DEPTH)	FT. (m)	CABLE SLACK	FT. (m)	VERTICAL	FT. (m)
TYPE A - POST	4 (1.2)	HANDHOLE	6.5 (2.0)	ALL FOUNDATIONS	3.5 (1.0)
C - CONTROLLER W/ UPS	4 (1.2)	DOUBLE HANDHOLE	13 (4.0)	MAST ARM (L) POLE	20'+L-2' = (6m+L-0.6m)=
D - CONTROLLER	4 (1.2)	SIGNAL POST	2 (1.0)	BRACKET MOUNTED	13 (4.0)
E - M. ARM POLE		CONTROLLER CAB.	1 (0.5)	PED. PUSHBUTTON	6 (1.8)
30" (750mm)	15 (4.6)	FIBER OPTIC	13 (4.0)	ELECTRIC SERVICE	13.5 (4.1)
36" (900mm)	15 (4.6)	ELECTRIC SERVICE	1 (0.5)	SERVICE TO GROUND	13.5 (4.1)
42" (1050mm)	25 (7.6)	GROUND CABLE	1 (0.5)	POST MOUNTED	6 (1.8)

INTERSECTION AND SAMPLING (SYSTEM) DETECTORS



EXISTING	PROPOSED	CABLE PLAN LEGEND
		8" (200mm) TRAFFIC SIGNAL SECTION
		12" (300mm) TRAFFIC SIGNAL SECTION
		12" (300mm) PEDESTRIAN SIGNAL SECTION
		12" (300mm) PEDESTRIAN SIGNAL SECTION
		CONTROLLER CABINET
		SERVICE INSTALLATION
		TELEPHONE INSTALLATION
		VEHICLE DETECTOR, INDUCTION LOOP
		MAGNETIC DETECTOR
		EMERGENCY VEHICLE LIGHT DETECTOR
		CONFIRMATION BEACON
		PUSHBUTTON DETECTOR
		DENOTES NUMBER OF CONDUCTORS. ALL CABLE NO. 14 EXCEPT AS INDICATED. ALL LOOP DETECTOR CABLE TO BE SHIELDED.
		GROUND CABLE IN CONDUIT NO. 6 SOLID COPPER (GREEN)
		FIBER OPTIC CABLE IN CONDUIT NO. 62.5/125 2-MM12F SM12F
		SIGNAL FACE WITH BACKPLATE "P" INDICATES PROGRAMMED HEAD.
		RAILROAD CONTROL CABINET
		ILLUMINATED SIGN "NO LEFT TURN"
		ILLUMINATED SIGN "NO RIGHT TURN"
		GROUND ROD AT HANDHOLE (H), DOUBLE HANDHOLE (H), OR CONTROLLER (C)
		GROUND ROD AT POST (P) OR MAST ARM POLE (MA)
		GROUND ROD AT ELECTRIC SERVICE INSTALLATION
		UNINTERRUPTIBLE POWER SUPPLY

SCHEDULE OF QUANTITIES			UNIT	TOTAL
ITEM				
SIGN PANEL TYPE 1			SQ FT	24
CONDUIT IN TRENCH, 2" DIA., GALVANIZED STEEL			FOOT	1061
CONDUIT IN TRENCH, 2 1/2" DIA., GALVANIZED STEEL			FOOT	196
CONDUIT IN TRENCH, 3" DIA., GALVANIZED STEEL			FOOT	15
CONDUIT IN TRENCH, 4" DIA., GALVANIZED STEEL			FOOT	111
CONDUIT PUSHED, 2" DIA., GALVANIZED STEEL			FOOT	145
CONDUIT PUSHED, 4" DIA., GALVANIZED STEEL			FOOT	165
HANDHOLE			EACH	3
HEAVY-DUTY HANDHOLE			EACH	6
DOUBLE HANDHOLE			EACH	1
TRENCH AND BACKFILL FOR ELECTRICAL WORK			FOOT	1438
FULL-ACTUATED CONTROLLER AND TYPE IV CABINET			EACH	1
TRANSCIVER - FIBER OPTIC			EACH	1
ELECTRIC CABLE IN CONDUIT, SIGNAL NO. 14 5C			FOOT	2322
ELECTRIC CABLE IN CONDUIT, SIGNAL NO. 14 7C			FOOT	446
ELECTRIC CABLE IN CONDUIT, LEAD-IN, NO. 14 1 PAIR			FOOT	2500
ELECTRIC CABLE IN CONDUIT, SERVICE NO. 6 2C			FOOT	76
TRAFFIC SIGNAL POST, GALVANIZED STEEL 14 FT.			EACH	4
TRAFFIC SIGNAL POST, GALVANIZED STEEL 16 FT.			EACH	1
STEEL MAST ARM ASSEMBLY AND POLE, 36 FT.			EACH	2
STEEL MAST ARM ASSEMBLY AND POLE, 40 FT.			EACH	1
CONCRETE FOUNDATION TYPE A			FOOT	20
CONCRETE FOUNDATION, TYPE C			FOOT	4
CONCRETE FOUNDATION, TYPE E 36-INCH DIAMETER			FOOT	45
SIGNAL HEAD, LED, 1-FACE, 3-SECTION, MAST ARM MOUNTED			EACH	7
SIGNAL HEAD, LED, 1-FACE, 3-SECTION, BRACKET MOUNTED			EACH	5
SIGNAL HEAD, LED, 1-FACE, 5-SECTION, MAST ARM MOUNTED			EACH	1
SIGNAL HEAD, LED, 2-FACE, 3-SECTION, BRACKET MOUNTED			EACH	1
SIGNAL HEAD, LED, 2-FACE, 1-3 SECTION, 1-5 SECTION, BRACKET MOUNTED			EACH	1
TRAFFIC SIGNAL BACKPLATE, LOUVERED, ALUMINUM			EACH	8
INDUCTIVE LOOP DETECTOR			EACH	9
DETECTOR LOOP, TYPE I			FOOT	674
PREFORMED DETECTOR LOOP			FOOT	117
SERVICE INSTALLATION - POLE MOUNTED			EACH	1
UNINTERRUPTIBLE POWER SUPPLY			EACH	1
ELECTRIC CABLE IN CONDUIT, GROUND NO. 6 1C			FOOT	627

FOR INFORMATION ONLY