

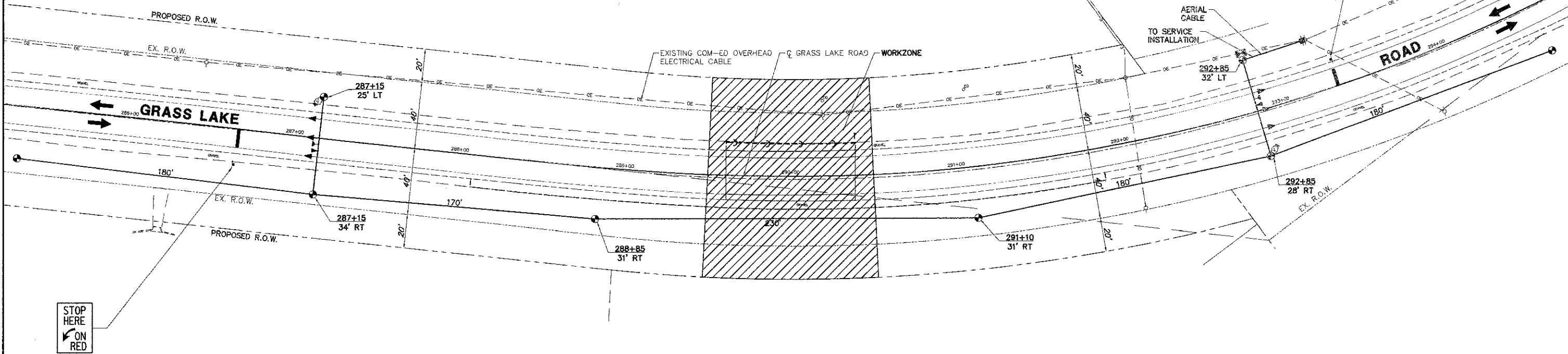
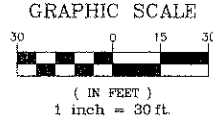
NOTES FOR TEMPORARY TRAFFIC SIGNALS:

1. ALL CONTROL EQUIPMENT INCLUDING EMERGENCY PRE-EMPTION AND COMMUNICATION DEVICES FOR THE TEMPORARY TRAFFIC SIGNAL(S) SHALL BE FURNISHED BY THE CONTRACTOR. EVP WILL BE INCLUDED IN "TEMPORARY BRIDGE TRAFFIC SIGNAL INSTALLATION" PAY ITEM.
2. ONLY CONTROLLERS SUPPLIED BY ONE OF THE DISTRICT APPROVED CLOSED LOOP EQUIPMENT MANUFACTURERS WILL BE APPROVED FOR USE AT TEMPORARY SIGNAL LOCATIONS. ALL CONTROLLERS USED FOR TEMPORARY TRAFFIC SIGNALS SHALL BE FULLY ACTUATED NEMA MICROPROCESSOR BASED WITH RS232 DATA ENTRY PORTS COMPATIBLE WITH EXISTING MONITORING SOFTWARE APPROVED BY IDOT DISTRICT 1, INSTALLED IN A NEMA TS1 OR TS2 CABINET. ONLY ONE BRAND OF CONTROLLER WILL BE ACCEPTED FOR ANY ONE CONTRACT.
3. ALL TRAFFIC SIGNAL SECTIONS AND PEDESTRIAN SIGNAL SECTIONS SHALL BE LED AND 12" (300mm) DIAMETER. HEADS SHALL BE PLACED AS INDICATED ON THE TEMPORARY TRAFFIC SIGNAL PLAN OR AS DIRECTED BY THE ENGINEER. PEDESTRIAN SIGNALS SHALL INCLUDE SOLID INTERNATIONAL SYMBOLS. PEDESTRIAN SIGNALS WITH COUNTDOWN TIMERS SHALL BE USED WHEN THE EXISTING INSTALLATION UTILIZES COUNTDOWN TYPE OR AS DIRECTED BY THE ENGINEER. COUNTDOWN TYPE PEDESTRIAN SIGNALS ARE NOT TO BE INSTALLED AT A RAILROAD INTERSECTION. THE CONTRACTOR SHALL FURNISH ENOUGH CABLE SLACK TO RELOCATE HEADS TO ANY POSITION ON THE SPAN WIRE OR AT LOCATIONS ILLUSTRATED ON THE PLANS FOR CONSTRUCTION STAGING. THE TEMPORARY TRAFFIC SIGNAL SHALL REMAIN IN OPERATION DURING ALL SIGNAL HEAD RELOCATIONS. EACH TEMPORARY TRAFFIC SIGNAL HEAD SHALL HAVE ITS OWN CABLE FROM THE CONTROLLER CABINET TO THE SIGNAL HEAD.
4. ANY TEMPORARY SIGNAL WITHIN AN EXISTING CLOSED LOOP TRAFFIC SIGNAL SYSTEM SHALL BE INTERCONNECTED TO THAT SYSTEM USING SIMILAR BRAND CONTROLLER EQUIPMENT. THE COST OF THE TEMPORARY INTERCONNECT SHALL BE INCLUDED IN THE PAY ITEM "TEMPORARY TRAFFIC SIGNAL INSTALLATION".
5. 24" WHITE STOP BAR TO BE INSTALLED AT THE TIME OF THE INSTALLATION AND IMPLEMENTATION OF THE TEMPORARY TRAFFIC SIGNALS.

6. CONTROLLER WITH STEEL BASE CABINET AND BATTERY BACK-UP CABINET SHALL BE MOUNTED ON A WOOD STAND.
7. UNINTERRUPTIBLE POWER SUPPLY (UPS) SHALL BE INCLUDED IN THE "TEMPORARY BRIDGE TRAFFIC SIGNAL INSTALLATION" PAY ITEM.
8. 8 WOOD POLES INSTALLED BY THE TRAFFIC SIGNAL CONTRACTOR (SEE TEMPORARY TRAFFIC SIGNAL PLANS).
9. PROPOSED WOOD POLES FOR ROADWAY LIGHTING SHALL BE USED TO SUPPORT TRAFFIC SIGNAL CABLES. SEE DISTRICT DETAIL BE-805 TEMPORARY LIGHTING AND TRAFFIC SIGNALS FOR SINGLE LANE STAGING (SHEETS 45-47).
10. TRAFFIC SIGNAL AND ROADWAY LIGHTING SHALL UTILIZE A COMBINATION ELECTRIC SERVICE INSTALLATION. SEE DISTRICT DETAIL BE-805 TEMPORARY LIGHTING AND TRAFFIC SIGNALS FOR SINGLE LANE STAGING (SHEETS 45-47).
11. ALL SIGNAL HEADS SHALL BE L.E.D.
12. ALL FIBER CONNECTIONS AND TESTING ARE INCLUDED IN THE "TEMPORARY BRIDGE TRAFFIC SIGNAL INSTALLATION" PAY ITEM.

CONSTRUCTION NOTES:

- ① EXACT PLACEMENT OF TEMPORARY WOOD POSTS TO BE DETERMINED BY IN THE FIELD BY THE RESIDENT ENGINEER.
- ② ALL VIDEO DETECTION ZONES ARE TO BE REDEFINED DURING EACH STAGE OF CONSTRUCTION AND ARE INCLUDED IN THE COST OF TEMPORARY BRIDGE TRAFFIC SIGNAL INSTALLATION.
- ③ THE CONTRACTOR SHALL VERIFY THE POWER LOCATION WITH COMED PRIOR TO COMMENCEMENT OF THE WORK.
- ④ ALL PAVEMENT MARKINGS ARE TO BE IN PLACE AT THE TIME OF THE TEMPORARY TRAFFIC SIGNAL TURN-ON.



THIS SHEET TO BE WORKED WITH DISTRICT 1 DETAIL BE-805 "TEMPORARY LIGHTING AND TRAFFIC SIGNALS FOR SINGLE LANE STAGING" (SHEETS 45-47) AND THE MAINTENANCE OF TRAFFIC PLANS.

FILE NAME = 4536.705-TRSTG.dwg	USER NAME = DAN STRAHAN	DESIGNED - JRD	REVISED - 9-7-12	STATE OF ILLINOIS DEPARTMENT OF TRANSPORTATION	TEMPORARY TRAFFIC SIGNAL PLAN (STAGE 1 AND 2) GRASS LAKE ROAD BIKE PATH UNDERPASS	SCALE 1"=30'	SHEET NO. 4 OF 5 SHEETS	STA. 287+00 TO STA. 293+00	FAJ. RTE	SECTION	COUNTY	TOTAL SHEETS	SHEET NO.
	PLOT SCALE = 1:1	DRAWN - PJS	REVISED - 10-9-12						0174	09-P0075-15-BT	LAKE	74	13
	PLOT DATE = 5/29/2012	CHECKED - TPG	REVISED - 12-17-12						CONTRACT #: 63778				
	DATE - 5-29-12	REVISED -	ILLINOIS FED. AID PROJECT										