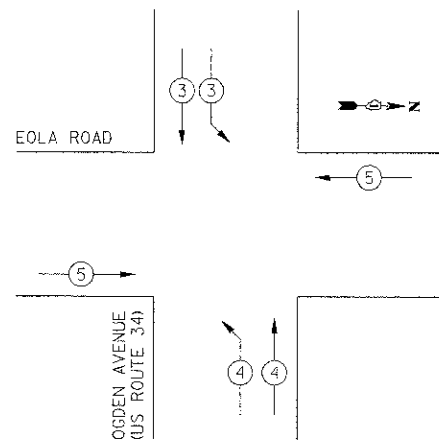
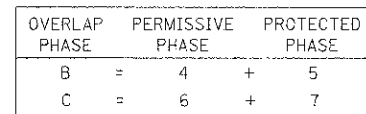


PROFILE	SHOWED	BY	DATE
NOTE BOOK	GRAD'S CHECKED		
	BAM. NOTED		
	STRUCTURE MOVERS CHECKED		
N.C.			



PROPOSED EMERGENCY VEHICLE PREEMPTORS			
PROPOSED EMERGENCY VEHICLE PREEMPTORS	3	4	5
MOVEMENT			



THE END OF THE TRACER CABLE SHALL BE CONTINUOUS AND EXTEND INTO THE CONTROLLER CABINET.

PAY ITEM DESCRIPTION	UNIT	QDGEN AVENUE
SERVICE INSTALLATION - POLE MOUNTED	EACH	1
UNDERGROUND CONDUIT, GALVANIZED STEEL, 2" DIA.	FOOT	508
HANDHOLE	EACH	2
MAINTENANCE OF EXISTING TRAFFIC SIGNAL INSTALLATION	EACH	1
GROUNDING EXISTING HANDHOLE FRAME AND COVER	EACH	9
ELECTRIC CABLE IN CONDUIT, SIGNAL NO. 14 3C	FOOT	84.5
ELECTRIC CABLE IN CONDUIT, LEAD-IN, NO. 14 1 PAIR	FOOT	1434.5
ELECTRIC CABLE IN CONDUIT, SERVICE, NO. 6 2 C	FOOT	33
ELECTRIC CABLE IN CONDUIT, EQUIPMENT GROUNDING CONDUCTOR, NO. 6 1C	FOOT	857.5
DRILL EXISTING HANDHOLE	EACH	2
INDUCTIVE LOOP DETECTOR	EACH	11
DETECTOR LOOP, TYPE I	FOOT	156
LIGHT DETECTOR AMPLIFIER	EACH	1
MODIFY EXISTING CONTROLLER FOUNDATION	EACH	1
REMOVE ELECTRIC CABLE FROM CONDUIT	FOOT	1028.5
REMOVE EXISTING TRAFFIC SIGNAL EQUIPMENT	EACH	1
CAT 6 ETHERNET CABLE	FOOT	84.5
FULL-ACTUATED CONTROLLER AND TYPE IV CABINET, SPECIAL	EACH	1
UNINTERRUPTABLE POWER SUPPLY, SPECIAL	EACH	1
SIGNAL HEAD, LED, 1-FACE, 3-SECTION, BRACKET MOUNTED, RETROFIT	EACH	4
SIGNAL HEAD, LED, 1-FACE, 3-SECTION, MAST ARM MOUNTED, RETROFIT	EACH	5
SIGNAL HEAD, LED, 1-FACE, 5-SECTION, MAST ARM MOUNTED, RETROFIT	EACH	4
SIGNAL HEAD, LED, 1-FACE, 5-SECTION, BRACKET MOUNTED, RETROFIT	EACH	4
INTERSECTION VIDEO TRAFFIC MONITORING SYSTEM WITH PTZ CAMERA	EACH	1
EVP CONFIRMATION BEACON, LED RETROFIT	EACH	4