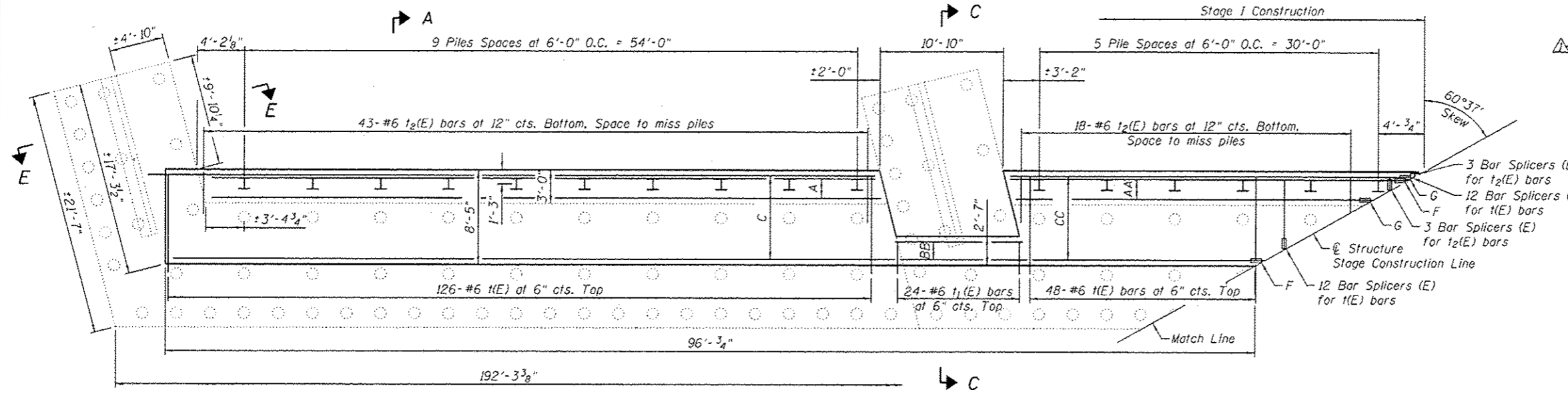


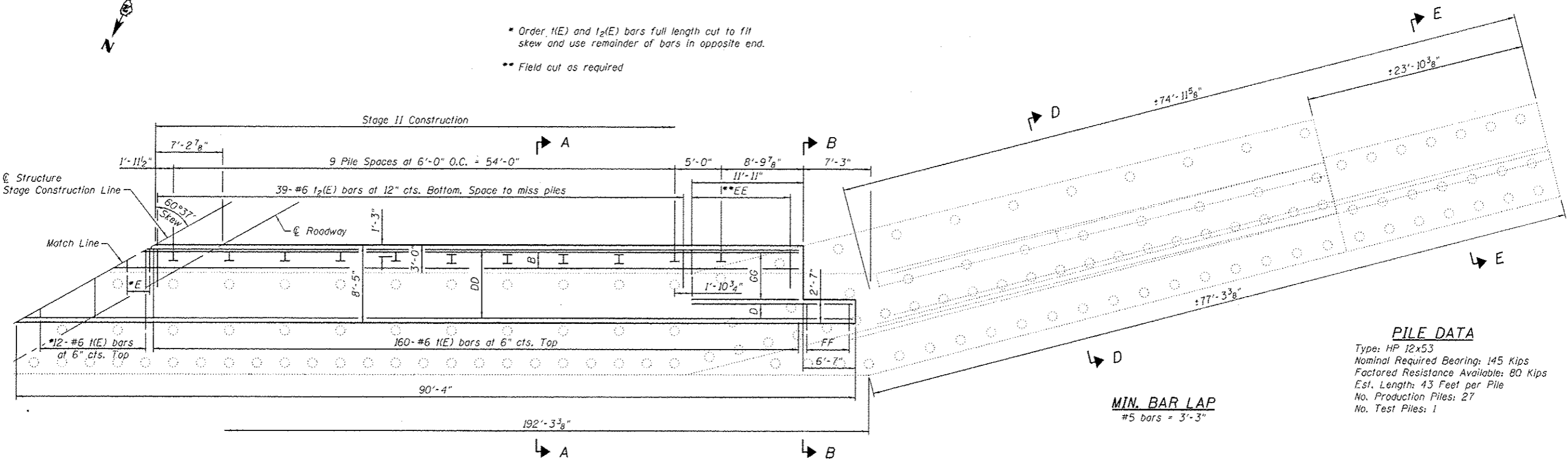
Notes:  
 See Sheet 28 of 35 for South Abutment details and Bill of Material.  
 Bar indicated thus 3x6-#5 etc. indicates 3 lines of bars 6 lengths per line. For details of Bar Splices, See Sheet 32 of 35.  
 For details of piles and concrete encasement See Sheet 30 of 35.  
 See Sheet 1 of 35 for location of overhead transmission lines. Contractor must communicate with Commonwealth Edison. See General Notes on Sheet 2 of 35.

Designation	Note
A	2x2-#5 w <sub>5</sub> (E) bars at 12" cts. Bottom
AA	2-#5 w <sub>6</sub> (E) bars at 12" cts. Bottom
B	3x2 w <sub>7</sub> (E) bars at 12" cts. Bottom
BB	4-#5 w <sub>1</sub> (E) at 12" cts. Top
C	10x2-#5 w <sub>1</sub> (E) bars at 12" cts. Top
CC	10-#5 w <sub>2</sub> (E) Bars at 12" cts. Top. Cut in field to fit skew
D	4-#5 w <sub>3</sub> (E) bars at 12" cts. Top
DD	10x2-#5 w <sub>4</sub> (E) bars at 12" cts. Top
E	3-#6 1 <sub>2</sub> (E) bars at 12" cts. Bottom
EE	10-#6 1 <sub>2</sub> (E) bars at 12" cts. Bottom. Space to miss piles.
F	10 Bar Splicers (E) for w <sub>2</sub> (E) bars
FF	16-#6 1 <sub>1</sub> (E) bars at 6" cts. Top
G	2 Bar Splicers (E) for w <sub>6</sub> (E) bars
GG	6-#5 w <sub>11</sub> (E) bars at 12" cts. Top



SOUTH ABUTMENT FOOTING PLAN

- \* Order 1(E) and 1/2(E) bars full length cut to fit skew and use remainder of bars in opposite end.
- \*\* Field cut as required



SOUTH ABUTMENT FOOTING PLAN

**PILE DATA**

Type: HP 12x53  
 Nominal Required Bearing: 145 Kips  
 Factored Resistance Available: 80 Kips  
 Est. Length: 43 Feet per Pile  
 No. Production Piles: 27  
 No. Test Piles: 1

**MIN. BAR LAP**  
 #5 bars = 3'-3"

FILE NAME : S:\103\6288--0399\6345\825\Micro\SA\Structural\Plans\980015-64C17-027-Sub07.dgn

1170 SOUTH HOUBOLT ROAD JOLIET, ILLINOIS 60431 (815) 744-4200 ASSOCIATES' IDPPR NO. 184-001273	USER NAME : vanessan	DESIGNED - K.JL	REVISED  ARD 4/5/2013	<b>STATE OF ILLINOIS</b> <b>DEPARTMENT OF TRANSPORTATION</b>	<b>SOUTH ABUTMENT FOOTING PLAN</b> <b>STRUCTURE NO. 098-0015</b> SHEET NO. 29 OF 35 SHEETS	F.A.P. RTE. 646	SECTION 101 BR-3	COUNTY WHITESIDE	TOTAL SHEETS 113	SHEET NO. 85
	PLOT SCALE :	DRAWN - B.JF	REVISED			CONTRACT NO. 64C17				
	PLOT DATE : 4/4/2013	CHECKED - K.JL	REVISED			ILLINOIS FED. AID PROJECT				