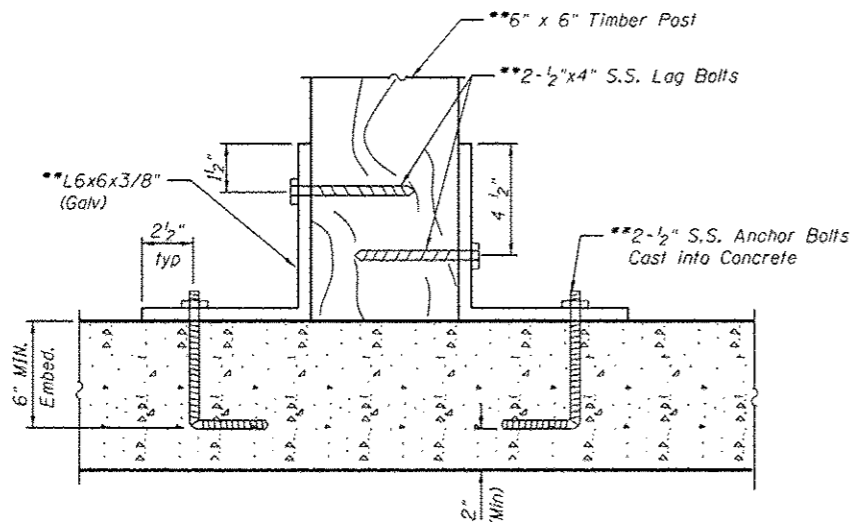


- Notes:
1. Alternate Joints in Rails by Using 8'-0" and 16'-0" Lumber.
 2. Place Bark Side Away from Post.
 3. Chamfer Rails 45° at Terminal Post.
 4. All Fence Wood to be CCA Treated PINE #2 Common or Better.
 5. The Clear Opening Between Elements Shall be such that a 6" Sphere Shall Not Pass Through the Lower 2'-3" of the Railing and a 8" Sphere Shall not Pass Through the Upper Portion of the Railing.

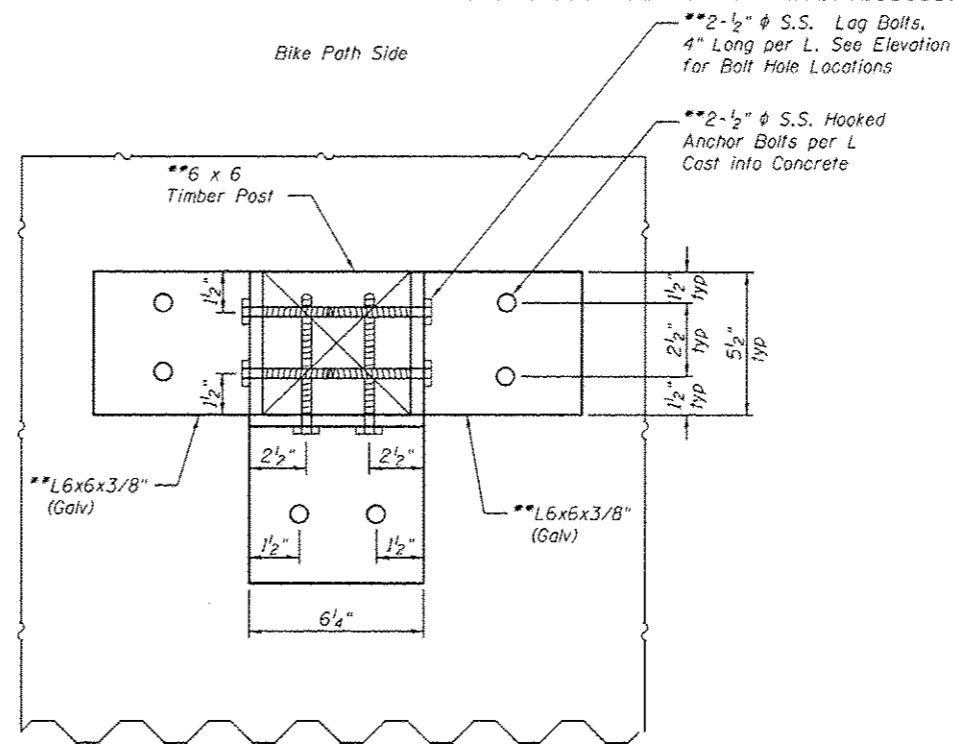
BICYCLE RAILING, SPECIAL SECTION (TYP.)

(See Roadway Plans for Quantities)

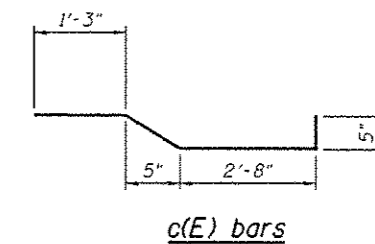


POST MOUNTING DETAIL - SECTION VIEW

**Included in the Cost of Bicycle Railing, Special



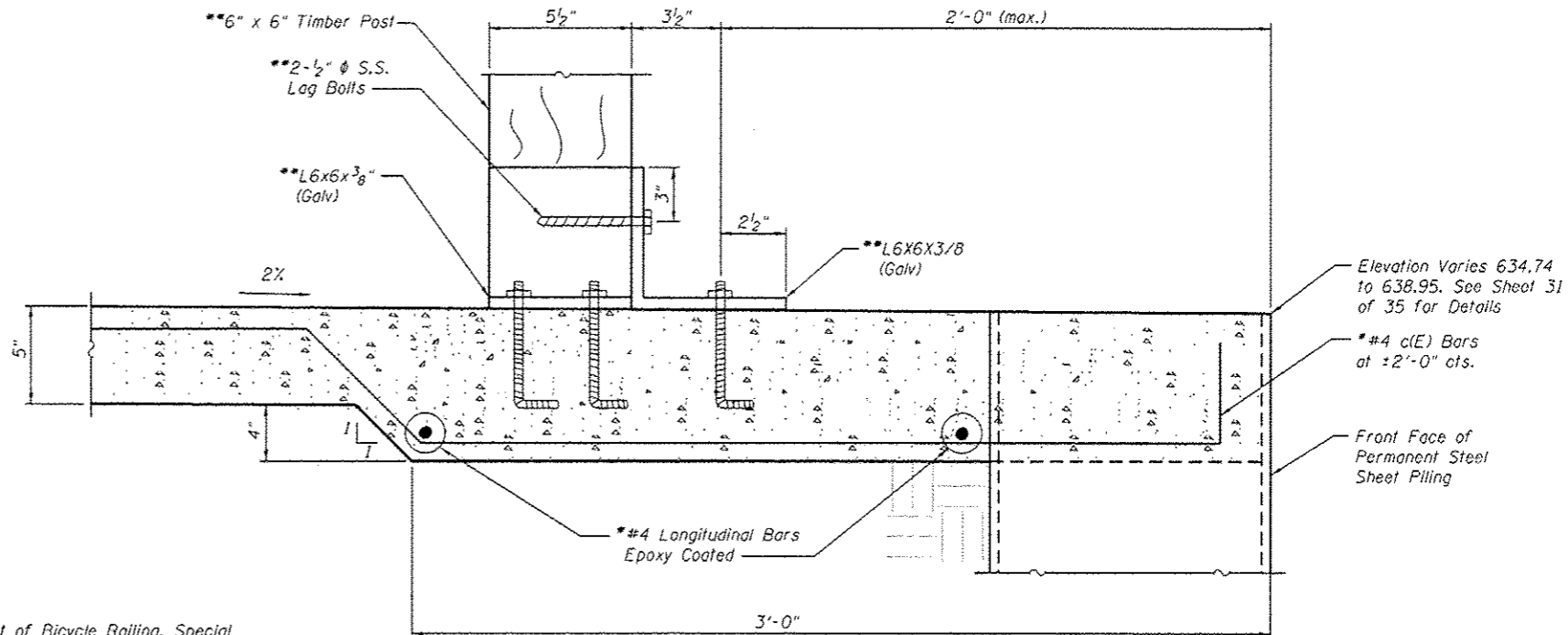
POST MOUNTING DETAIL - PLAN VIEW



c(E) bars

MIN. BAR LAP

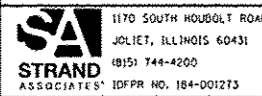
#4 bar = 1'-3"



POST MOUNTING DETAIL - ELEVATION VIEW

**Included in the Cost of PCC Sidewalk, 5"

FILE NAME = SA\JUL16208-63591\6345\B25\Micro\SA\Structural\Plans\982013-64C17-02a-SP1LE2.dgn



1170 SOUTH HOUBOLT ROAD
JOLIET, ILLINOIS 60431
(815) 744-4200
PLOT SCALE :
PLOT DATE : 4/11/2013

DESIGNED - RRD
CHECKED - AJS
DRAWN - BJJ
CHECKED - RRD

REVISED Δ RRD 4/5/2013
REVISED
REVISED
REVISED

**STATE OF ILLINOIS
DEPARTMENT OF TRANSPORTATION**

**PERMANENT SHEET PILE WALL (2 of 2)
STRUCTURE NO. 098-0015**
SHEET NO. 31A OF 35 SHEETS

F.A.P. RTE.	SECTION	COUNTY	TOTAL SHEETS	SHEET NO.
646	101 BR-3	WHITESIDE	113	87a
				CONTRACT NO. 64C17
[ILLINOIS] FED. AID PROJECT				