

STATE OF ILLINOIS
DEPARTMENT OF TRANSPORTATION
DIVISION OF HIGHWAYS

F.A.P. RTE.	SECTION	COUNTY	TOTAL SHEETS	SHEET NO.
613	(8C,9,10,11) RS-3	BUREAU	18	1
		ILLINOIS	Contract No. 66919	

D-93-031-09



**PROPOSED
HIGHWAY PLANS**

FAP ROUTE 613 (US 34/US 6)
SECTION (8C,9,10,11) RS-3
PROJECT: HPP-F-0613 (020)

TYPE of IMPROVEMENT: 3P RESURF, SHLD WID
BUREAU COUNTY

C-93-054-09

INDEX OF SHEETS

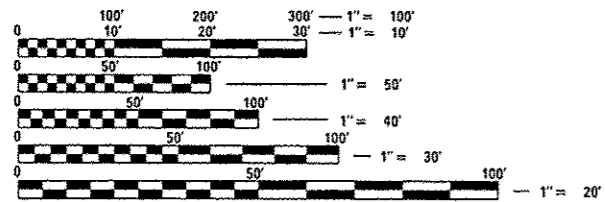
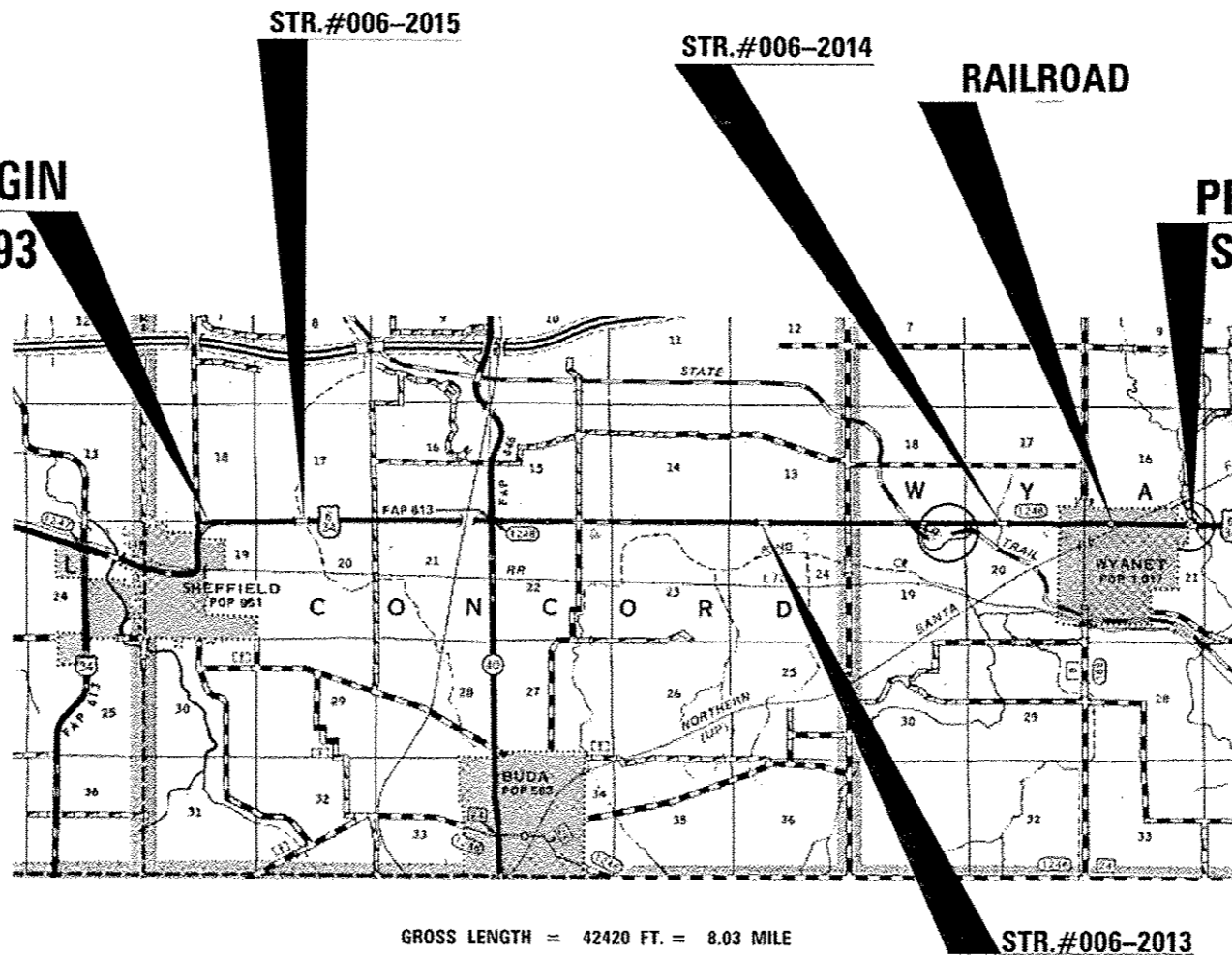
- 1 COVER SHEET
- 2 GENERAL NOTES; LOCATION MAP
- 3-6 SUMMARY OF QUANTITIES
- 7-8 TYPICAL SECTIONS
- 9-12 SCHEDULE OF QUANTITIES
- 13-18 DETAILS

STANDARDS

- 000001-06 STANDARD SYMBOLS, ABBREVIATIONS AND PATTERNS
- 001006 DECIMAL OF AN INCH AND OF A FOOT
- 406201-01 MAILBOX TURNOUT
- 424001-07 PERPENDICULAR CURB RAMPS FOR SIDEWALKS
- 424026-01 ENTRANCE / ALLEY PEDESTRIAN CROSSINGS
- 667101-02 PERMANENT SURVEY MARKERS
- 701001-02 OFF-ROAD OPERATIONS 2L, 2W, MORE THAN 15' (4.5 m) AWAY
- 701006-04 OFF-ROAD OPERATIONS 2L, 2W, 15' (4.5 m) TO 24' (600 mm) FROM PAVEMENT EDGE
- 701011-03 OFF-ROAD MOVING OPERATIONS 2L, 2W, DAY ONLY
- 701301-04 LANE CLOSURE, 2L, 2W, SHORT TIME OPERATIONS
- 701326-04 LANE CLOSURE, 2L, 2W, PAVEMENT WIDENING, FOR SPEEDS ≥ 45 MPH
- 701501-06 URBAN LANE CLOSURE, 2L, 2W, UNDIVIDED
- 701801-05 LANE CLOSURE, MULTILANE 1W OR 2W CROSSWALK OR SIDEWALK CLOSURE
- 701901-02 TRAFFIC CONTROL DEVICES
- 780001-03 TYPICAL PAVEMENT MARKINGS
- 781001-03 TYPICAL APPLICATIONS RAISED REFLECTIVE PAVEMENT MARKERS

PROJECT BEGIN
STA 1034 + 93

PROJECT END
STA 1458 + 78



FULL SIZE PLANS HAVE BEEN PREPARED USING STANDARD ENGINEERING SCALES. REDUCED SIZED PLANS WILL NOT CONFORM TO STANDARD SCALES. IN MAKING MEASUREMENTS ON REDUCED PLANS, THE ABOVE SCALES MAY BE USED.

J.U.L.I.E.
JOINT UTILITY LOCATION INFORMATION FOR EXCAVATION
1-800-892-0123
OR 811

PROJECT ENGINEER J.KANNEL, P.E.
PROJECT MANAGER P.BRABOY

CONTRACT NO. 66919

GROSS LENGTH = 42420 FT. = 8.03 MILE
NET LENGTH = 42372 FT. = 8.02 MILE

FUNCTIONAL CLASSIFICATION-
MAJOR COLLECTOR (RURAL)

2009 ADT = 2200 VPD
PV = 93.2% SU = 4.1% MU = 2.7%

STATE OF ILLINOIS
DEPARTMENT OF TRANSPORTATION
DIVISION OF HIGHWAYS

SUBMITTED *Jan. 22nd 2013*
Paul A. [Signature]
DEPUTY DIRECTOR OF HIGHWAYS, REGION ENGINEER

March 22 2013
John D. Baranzelli, P.E. [Signature]
ENGINEER OF DESIGN AND ENVIRONMENT

March 22 2013
Omer Osman, P.E. [Signature]
DIRECTOR OF HIGHWAYS, CHIEF ENGINEER

PRINTED BY THE AUTHORITY
OF THE STATE OF ILLINOIS

GENERAL NOTES

THE THICKNESS OF HMA SHOWN ON THE PLANS IS THE NOMINAL THICKNESS. DEVIATIONS FROM THE NOMINAL THICKNESS WILL BE PERMITTED WHEN SUCH DEVIATIONS OCCUR DUE TO IRREGULARITIES IN THE EXISTING SURFACE OR BASE ON WHICH THE HMA IS PLACED.

THE HMA SURFACE OF ALL MAILBOX TURNOUTS, PRIVATE ENTRANCES, COMMERCIAL ENTRANCES, AND SIDE ROADS SHALL BE MADE NEATLY, IN A WORKMANLIKE MANNER, AND SHALL ACCURATELY CONFORM TO THE SHAPES AND DIMENSIONS SHOWN ON THE PLAN DETAILS. IF REQUIRED BY THE ENGINEER, THE CONTRACTOR SHALL BE REQUIRED TO SAW CUT THE HMA SURFACE TO CONFORM TO THE SHAPES AND DIMENSIONS SHOWN ON THE PLAN DETAILS. THIS WORK SHALL BE INCLUDED IN THE COST OF THE HMA SURFACE.

THE BASE COURSE WIDENING SHALL BE CARRIED THROUGH ALL ENTRANCES, SIDE ROADS, AND MAILBOX TURNOUTS. EXCEPTIONS WILL BE SHOWN ON THE PLANS.

EXCEPT AS NOTED ON THE PLANS, PAVEMENT GRADES SHOWN ARE AT THE TOP OF PAVEMENT SURFACES.

THE ENGINEER WILL BE THE SOLE JUDGE CONCERNING CURING TIME FOR THE VARIOUS HMA LIFTS.

FOR STABILIZATION, ALL TYPE III BARRICADES SHALL REQUIRE A MINIMUM OF FOUR SAND BAGS PER BARRICADE.

SEEDING SHALL NOT BE PERMITTED AT ANY TIME WHEN THE GROUND IS FROZEN, WET, OR IN AN UNTILLABLE CONDITION. LOCATIONS TO BE SEEDED WILL BE DETERMINED BY THE ENGINEER.

ONLY THOSE TREES DESIGNATED BY THE ENGINEER OR LISTED IN THE TREE REMOVAL SCHEDULE SHALL BE REMOVED. THE CONTRACTOR SHALL PROTECT ALL REMAINING TREES FROM DAMAGE DUE TO HIS OPERATIONS.

THE FINISHED EARTHWORK SHALL HAVE A VEGETATION SUSTAINING SOIL COVERING THE TOP FOUR INCHES IN AREAS TO BE SEEDED OR SODDED. THE VEGETATION SUSTAINING SOIL REQUIRED WILL NOT BE PAID FOR SEPARATELY BUT SHALL BE INCLUDED IN THE COST OF FURNISHED EXCAVATION.

ON EXISTING PAVEMENT WHICH MAY BE SUPERELEVATED, THE NEW HMA PAVEMENT SHALL BE BUILT WITH THE SAME SUPERELEVATION UNLESS NEW SUPERELEVATION RATES ARE GIVEN ON THE PLANS.

ANY REFERENCE TO A STANDARD IN THESE PLANS SHALL BE INTERPRETED TO MEAN THE EDITION AS INDICATED BY THE SUBNUMBER SHOWN IN THE LIST OF STANDARDS OR THE COPY INCLUDED IN THESE PLANS.

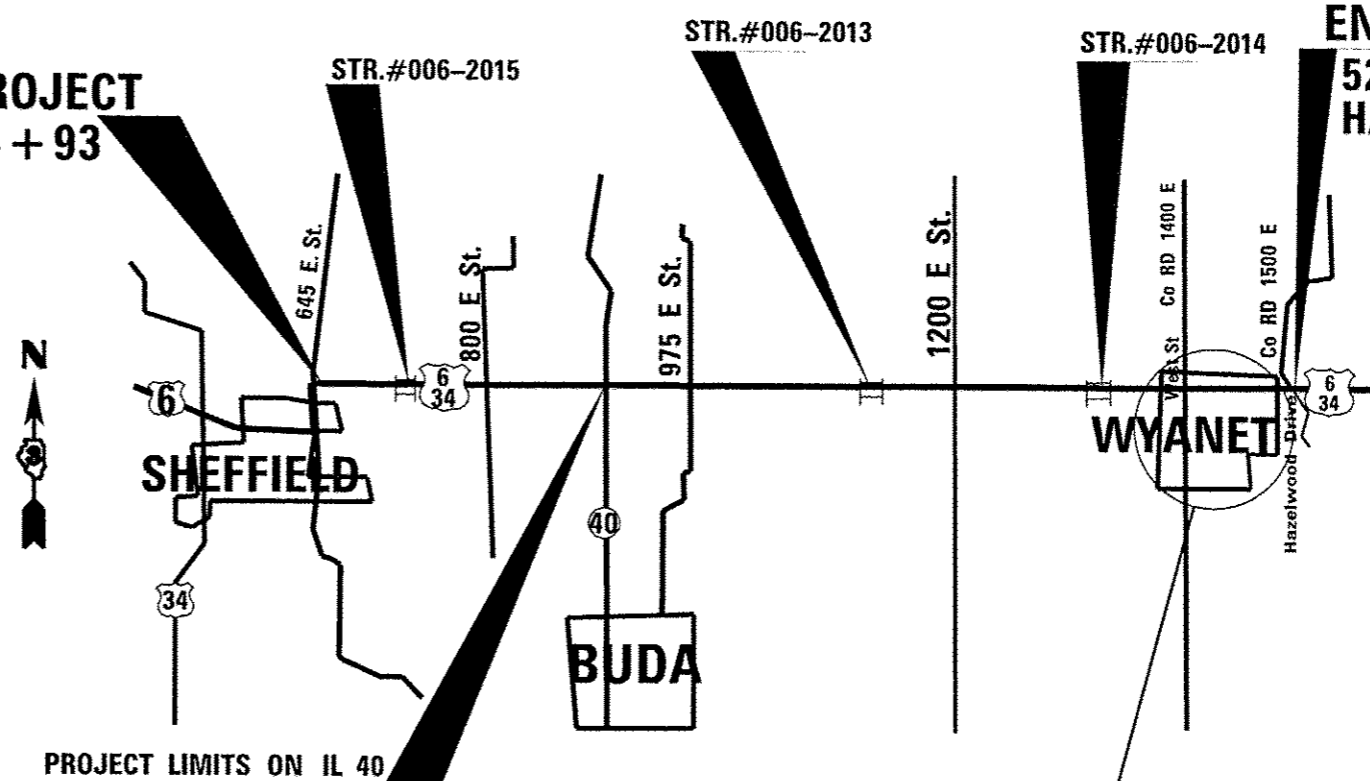
THE FOLLOWING RATES OF APPLICATION HAVE BEEN USED IN CALCULATING PLAN QUANTITIES:

GRANULAR MATERIALS	2.05	TONS / CU YD
AGGREGATE (PRIME COAT)	0.002	TONS / SQ YD
HMA RESURFACING	112	LBS / SQ YD / IN
SHORT TERM PAVEMENT MARKING	10	FT / 100 FT OF APPLICATION
MIX FOR CRACKS, JTS & FLGWS	0.0003	TONS / SQ YD
LEVEL BINDER (HAND METHOD)	0.0005	TONS / SQ YD
SUPPLEMENTAL WATERING	3	GAL / SQ YD / APPLICATION

BITUMINOUS MATERIALS (PRIME COAT) RATES		
SURFACE TYPE	ESTIMATED TRUCK APPLICATION RATE	RESIDUAL RATE
AGGREGATE BASES	0.375 GAL / SQ YD	N/A
MILLED HMA OR PCC PAVEMENT	0.08 GAL / SQ YD	0.04 GAL / SQ YD
EXISTING PAVEMENT	0.05 GAL / SQ YD	0.025 GAL / SQ YD
FOG COAT (BETWEEN ADDITIONAL HMA LIFTS)	0.05 GAL / SQ YD	0.025 GAL / SQ YD

ESTIMATED TRUCK APPLICATION RATE USED FOR CALCULATING PLAN QUANTITIES

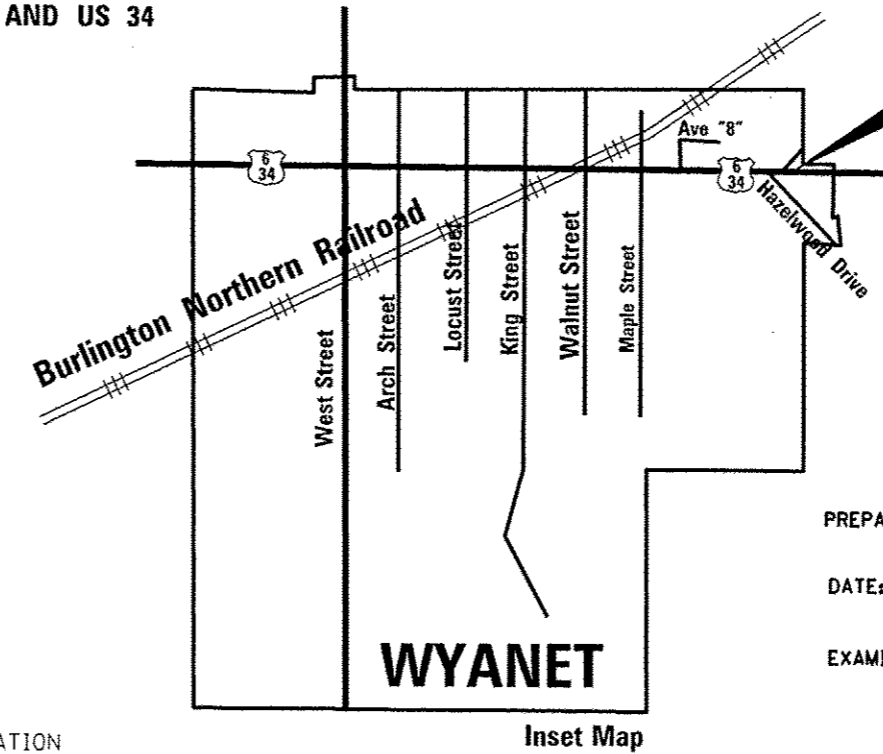
**START PROJECT
STA 1034 + 93**



**PROJECT LIMITS ON IL 40
ARE 50' NORTH & 50' SOUTH
OF US 6 AND US 34**

See Inset Map

**END PROJECT
Hazelwood Drive
STA 1458 + 78**



Inset Map

STATE OF ILLINOIS
DEPARTMENT OF TRANSPORTATION
DISTRICT THREE

PREPARED BY: *Don Beaulieu*
DISTRICT STUDIES & PLANS ENGINEER
DATE: 1-22-13
EXAMINED BY: *Herb Jones*
DISTRICT CONSTRUCTION ENGINEER
Wayne Miller
DISTRICT MATERIALS ENGINEER
Bruce A. Tucker
DISTRICT OPERATIONS ENGINEER

COMMITMENTS:
ENVIRONMENTAL COORDINATION
ADDITIONAL TIE POINT INFORMATION

FILE NAME *	USER NAME * #USER*	DESIGNED -	REVISED -	STATE OF ILLINOIS DEPARTMENT OF TRANSPORTATION	Location Map and General Notes	F.A.P. RTE.	SECTION	COUNTY	TOTAL SHEETS	SHEET NO.	
#FILE#		DRAWN -	REVISED -			613	(8C,9,10,11) RS-3	BUREAU	18	2	
PLOT SCALE * #SCALE*		CHECKED -	REVISED -			CONTRACT NO. 66919					
PLOT DATE * #DATE*		DATE -	REVISED -			ILLINOIS FED. AID PROJECT					
					SCALE:	SHEET NO. OF SHEETS		STA.	TO STA.		

51

CODE NO.	ITEM	UNIT	TOTAL QUANTITY	CONSTR. CODE
				ROADWAY 0005 RURAL
20200600	EXCAVATING AND GRADING EXISTING SHOULDER	UNIT	240	240
20400800	FURNISHED EXCAVATION	CU YD	40	40
25200110	SODDING, SALT TOLERANT	SO YD	104	104
25200200	SUPPLEMENTAL WATERING	UNIT	1	1
40600100	BITUMINOUS MATERIALS (PRIME COAT)	GALLON	17933	17933
40600300	AGGREGATE (PRIME COAT)	TON	267	267
40600400	MIXTURE FOR CRACKS, JOINTS, AND FLANGEWAYS	TON	41	41
40600525	LEVELING BINDER (HAND METHOD), N50	TON	69	69
40600627	LEVELING BINDER (MACHINE METHOD), IL-9.5FG, N50	TON	5237	5237
40600895	CONSTRUCTING TEST STRIP	EACH	2	2
40600990	TEMPORARY RAMP	SO YD	196	196
40603310	HOT-MIX ASPHALT SURFACE COURSE, MIX "C", N50	TON	12014	12014
40800050	INCIDENTAL HOT-MIX ASPHALT SURFACING	TON	780	780
42400100	PORTLAND CEMENT CONCRETE SIDEWALK 4 INCH	SO FT	1785	1785

FILE NAME *	USER NAME * #USER#	DESIGNED -	REVISED -	STATE OF ILLINOIS DEPARTMENT OF TRANSPORTATION	SUMMARY OF QUANTITIES				F.A.P. RTE.	SECTION	COUNTY	TOTAL SHEETS	SHEET NO.
#FILE#		DRAWN -	REVISED -						613	(80,9,10,11) RS-3	BUREAU	18	3
PLOT SCALE * #SCALE#		CHECKED -	REVISED -		SCALE: SHEET NO. OF SHEETS STA. TO STA.				CONTRACT NO. 66919				
PLOT DATE * #DATE#		DATE -	REVISED -						ILLINOIS FED. AID PROJECT				

CODE NO.	ITEM	UNIT	TOTAL QUANTITY	CONSTR. CODE	
				ROADWAY	RURAL
42400800	DETECTABLE WARNINGS	SO FT	354	0005	354
44000158	HOT-MIX ASPHALT SURFACE REMOVAL, 2 1/4"	SO YD	130634		130634
44000600	SIDEWALK REMOVAL	SO FT	1153		1153
48101200	AGGREGATE SHOULDERS, TYPE B	TON	2144		2144
48203017	HOT-MIX ASPHALT SHOULDERS, 5"	SO YD	3997		3997
56109210	WATER VALVES TO BE ADJUSTED	EACH	2		2
60255500	MANHOLES TO BE ADJUSTED	EACH	4		4
66700205	PERMANENT SURVEY MARKERS, TYPE I	EACH	13		13
67000400	ENGINEER'S FIELD OFFICE, TYPE A	CAL MO	5		5
67100100	MOBILIZATION	L SUM	1		1
70100460	TRAFFIC CONTROL AND PROTECTION, STANDARD 701306	L SUM	1		1
70100500	TRAFFIC CONTROL AND PROTECTION, STANDARD 701326	L SUM	1		1
70102620	TRAFFIC CONTROL AND PROTECTION, STANDARD 701501	L SUM	1		1
70102640	TRAFFIC CONTROL AND PROTECTION, STANDARD 701801	L SUM	1		1

FILE NAME *	USER NAME * #USER*	DESIGNED -	REVISED -	STATE OF ILLINOIS DEPARTMENT OF TRANSPORTATION	SUMMARY OF QUANTITIES				F.A.P. RTE.	SECTION	COUNTY	TOTAL SHEET
#FILEL*		DRAWN -	REVISED -						613	(8C,9,10,11) RS-5	BUREAU	18
#MODELNAME*	PLOT SCALE * #SCALE*	CHECKED -	REVISED -		SCALE:	SHEET	OF	SHEETS	STA.	TO STA.	CONTRACT NO. 66919	
	PLOT DATE * #DATE*	DATE -	REVISED -		ILLINOIS FED. AID PROJECT							

CODE NO.	ITEM	UNIT	TOTAL QUANTITY	CONSTR. CODE
				ROADWAY 0005 RURAL
70300100	SHORT TERM PAVEMENT MARKING	FOOT	12716	12716
70300210	TEMPORARY PAVEMENT MARKING LETTERS AND SYMBOLS	SO FT	972	972
70300220	TEMPORARY PAVEMENT MARKING - LINE 4"	FOOT	297798	297798
70300240	TEMPORARY PAVEMENT MARKING - LINE 5"	FOOT	28037	28037
70300250	TEMPORARY PAVEMENT MARKING - LINE 8"	FOOT	1200	1200
70300260	TEMPORARY PAVEMENT MARKING - LINE 12"	FOOT	1530	1530
70300280	TEMPORARY PAVEMENT MARKING - LINE 24"	FOOT	462	462
70301000	WORK ZONE PAVEMENT MARKING REMOVAL	SO FT	1399	1399
* 78000100	THERMOPLASTIC PAVEMENT MARKING - LETTERS AND SYMBOLS	SO FT	324	324
* 78000200	THERMOPLASTIC PAVEMENT MARKING - LINE 4"	FOOT	1164	1164
* 78000400	THERMOPLASTIC PAVEMENT MARKING - LINE 6"	FOOT	1042	1042
* 78000500	THERMOPLASTIC PAVEMENT MARKING - LINE 8"	FOOT	400	400
* 78000600	THERMOPLASTIC PAVEMENT MARKING - LINE 12"	FOOT	510	510
* 78000650	THERMOPLASTIC PAVEMENT MARKING - LINE 24"	FOOT	154	154

14

*Specialty Items

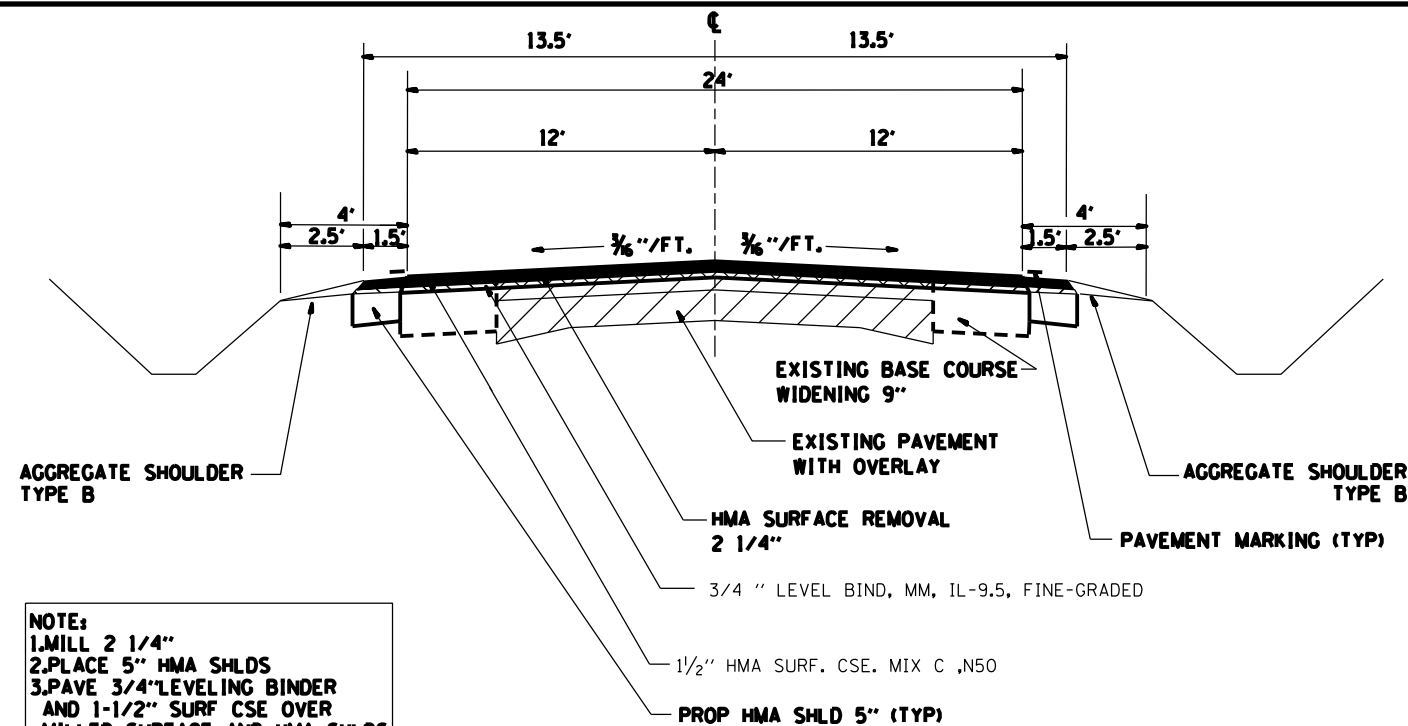
FILE NAME *	USER NAME * #USER*	DESIGNED -	REVISED -	STATE OF ILLINOIS DEPARTMENT OF TRANSPORTATION	SUMMARY OF QUANTITIES				F.A.P. RTE.	SECTION	COUNTY	TOTAL SHEETS	SHEET NO.
#FILE#		DRAWN -	REVISED -						613	(8C,9,10,11) RS-3	BUREAU	18	5
MODELNAME#	PLOT SCALE * #SCALE#	CHECKED -	REVISED -		SCALE:	SHEET OF SHEETS	STA.	TO STA.	CONTRACT NO. 66919				
	PLOT DATE * #DATE#	DATE -	REVISED -		ILLINOIS FED. AID PROJECT								

CODE NO.	ITEM	UNIT	TOTAL QUANTITY	CONSTR. CODE	
				ROADWAY	RURAL
* 78001110	PAINT PAVEMENT MARKING - LINE 4"	FOOT	196024	196024	
* 78001130	PAINT PAVEMENT MARKING - LINE 6"	FOOT	16609	16609	
* 78100100	RAISED REFLECTIVE PAVEMENT MARKER	EACH	530	530	
78300200	RAISED REFLECTIVE PAVEMENT MARKER REMOVAL	EACH	530	530	
X4400500	COMBINATION CURB AND GUTTER REMOVAL (SPECIAL)	FOOT	94	94	
X4401198	HOT-MIX ASPHALT SURFACE REMOVAL, VARIABLE DEPTH	SO YD	14778	14778	
X6061700	COMBINATION CONCRETE CURB AND CUTTER, TYPE B (SPECIAL)	FOOT	84	84	
Z0034105	MATERIAL TRANSFER DEVICE	TON	17655	17655	
Z0048665	RAILROAD PROTECTIVE LIABILITY INSURANCE	L SUM	1	1	

9

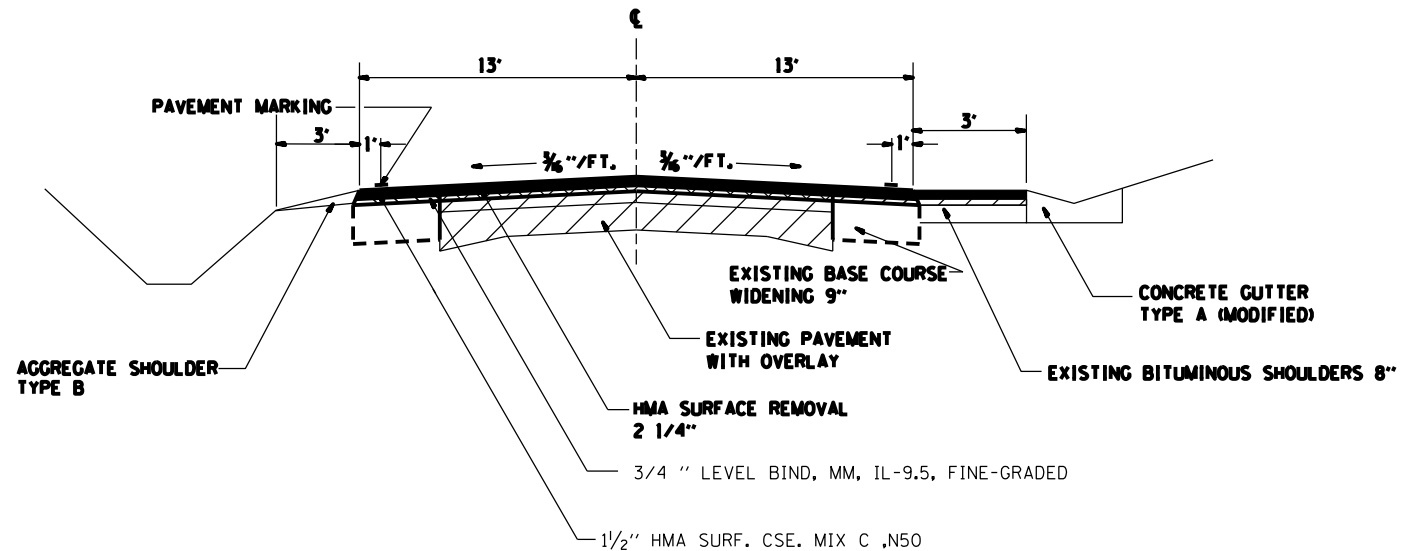
**specialty items*

FILE NAME *	USER NAME * #USERS*	DESIGNED -	REVISED -	STATE OF ILLINOIS DEPARTMENT OF TRANSPORTATION	SUMMARY OF QUANTITIES				P.A.P. RTE. 613	SECTION (BC,9,10,11) RS-3	COUNTY BUREAU	TOTAL SHEETS 18	SHEET NO. 6
#FILEL*		DRAWN -	REVISED -						SCALE:	SHEET	OF	SHEETS	STA.
#MODELNAME*		CHECKED -	REVISED -		ILLINOIS FED. AID PROJECT								
		DATE -	REVISED -										

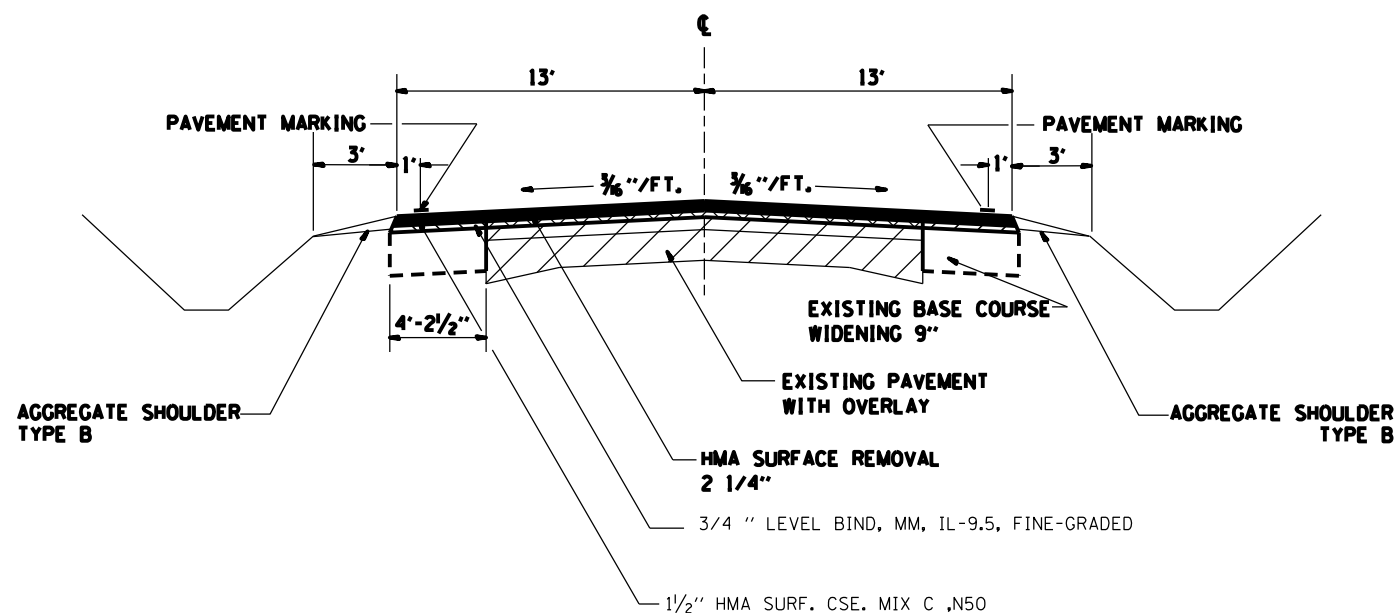


NOTE:
 1. MILL 2 1/4"
 2. PLACE 5" HMA SHLDS
 3. PAVE 3/4" LEVELING BINDER AND 1-1/2" SURF CSE OVER MILLED SURFACE AND HMA SHLDS

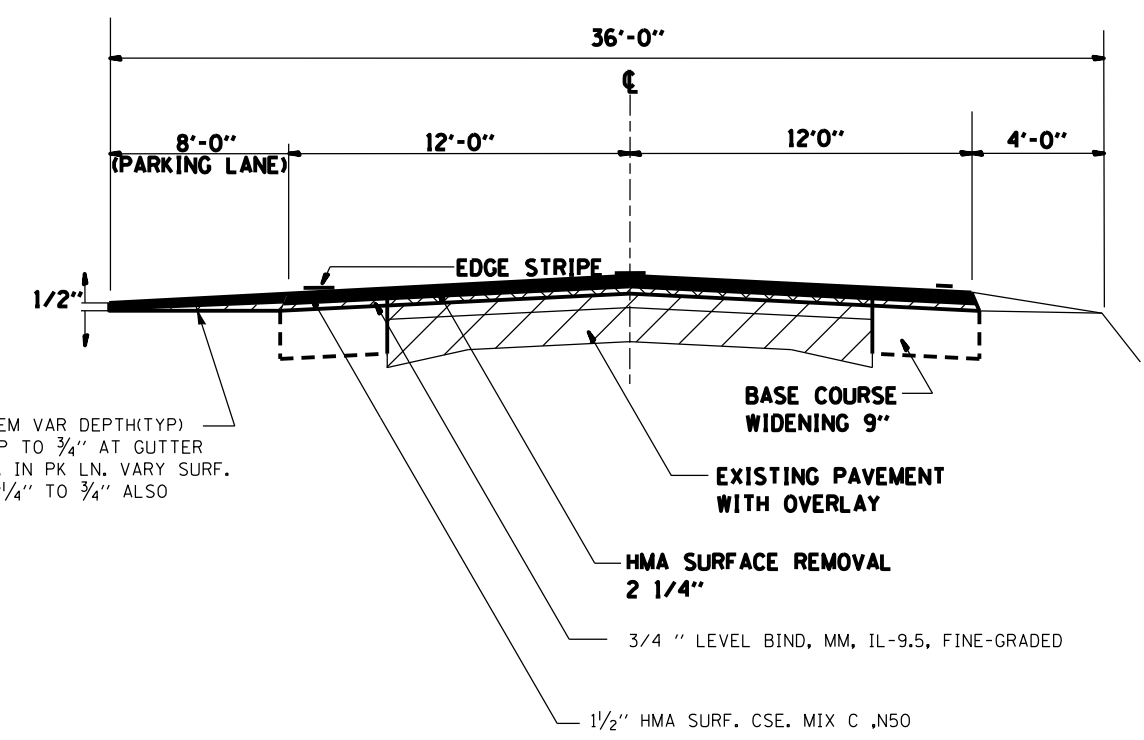
TANGENT SECTION
 STA. 1034+58 - 1154+50



TANGENT SECTION
 STA. 1174+14 - 1179+12
 STA. 1179+12 - 1191+44
 STA. 1216+35.6 - 1236+48
 STA. 1240+47 - 1411+00



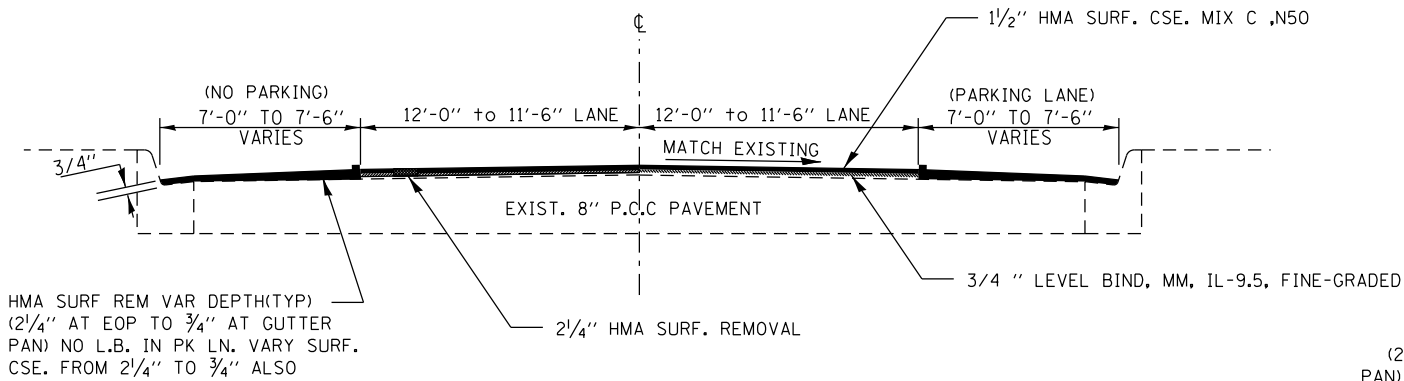
TANGENT SECTION
 STA. 1174+14 - 1179+12
 STA. 1191+44 - 1216+35.6
 STA. 1236+48 - 1240+47



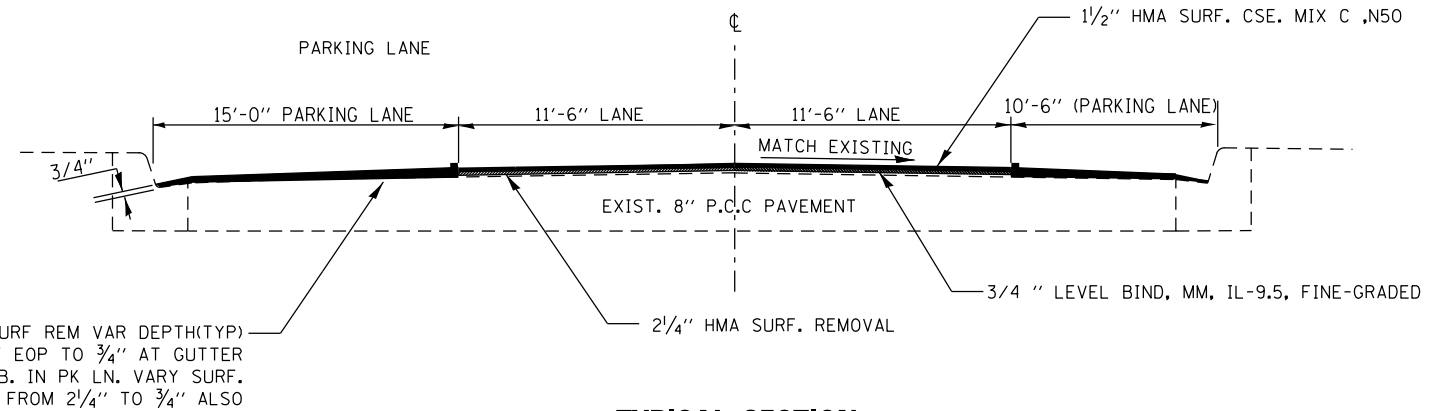
HMA SURF REM VAR DEPTH(TYP)
 (2 1/4" AT EOP TO 3/4" AT GUTTER PAN) NO L.B. IN PK LN. VARY SURF. CSE. FROM 2 1/4" TO 3/4" ALSO

TANGENT SECTION
 STA. 1411+00 - 1421+00
 (BEGINNING OF PARKING LANE ON NORTH SIDE TO WEST STREET)

FILE NAME =	USER NAME = *USER*	DESIGNED -	REVISED -	STATE OF ILLINOIS DEPARTMENT OF TRANSPORTATION	Typical Sections	F.A.P. RTE.	SECTION	COUNTY	TOTAL SHEETS	SHEET NO.	
*FILE#		DRAWN -	REVISED -			613	(8C,9,10,11) RS-3	BUREAU	18	7	
		CHECKED -	REVISED -			CONTRACT NO. 66919					
		DATE -	REVISED -			ILLINOIS FED. AID PROJECT					
				SCALE:	SHEET NO. OF SHEETS	STA. TO STA.					

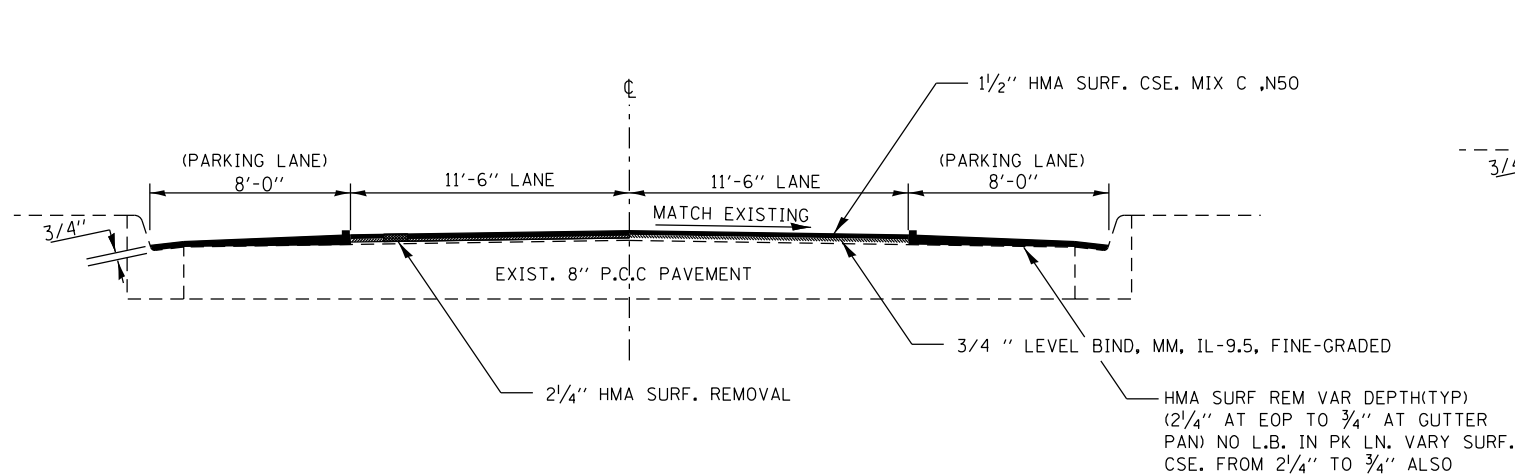


TYPICAL SECTION
STA. 1421+00 TO STA. 1425+50
(WEST STREET TO ARCH STREET)

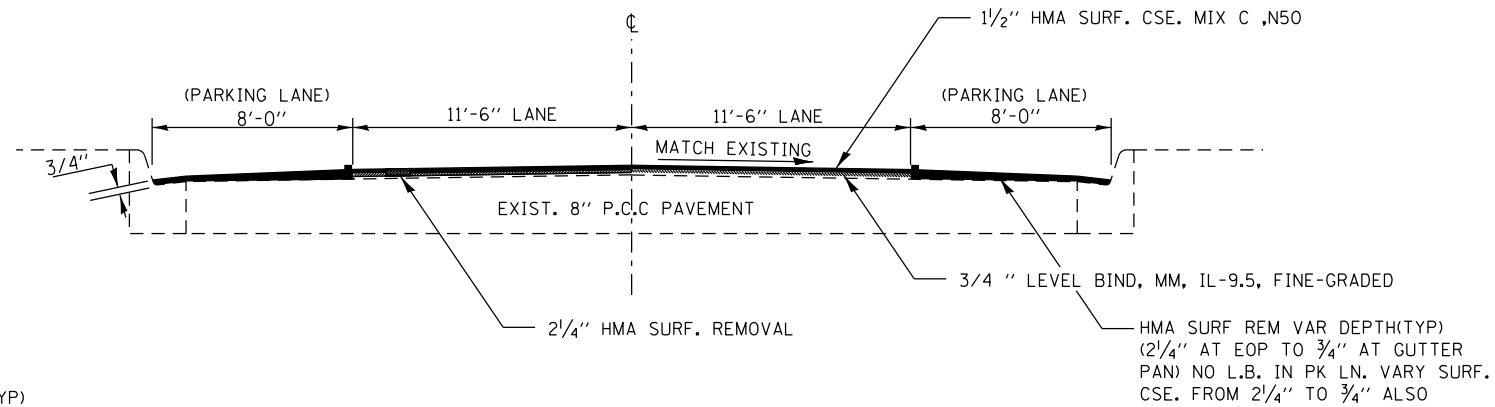


TYPICAL SECTION
STA. 1431+50 TO STA. 1439+20
(LOCUST STREET TO WEST SIDE OF RAILROAD TRACKS)

MIXTURES TABLE			
	HMA SURFACE	HMA LEVEL BINDER	HMA SHOULDERS
PG GRADE	PG64-22	PG64-22	PG64-22
DESIGN AIR VOIDS	4.0% @ N50	4.0% @ N50	2.0% @ N30
MIXTURE COMPOSITION	IL 9.5	IL 9.5FG	IL 19.0L
FRICTION AGGREGATE	MIXTURE C		
DENSITY TEST METHOD	OCP CORES	OCP CORES	CORES



TYPICAL SECTION
STA. 1425+50 TO STA. 1431+50
(ARCH STREET TO LOCUST STREET)



TYPICAL SECTION
STA. 1439+68 TO STA. 1458+78
(EAST SIDE OF RAILROAD TRACKS TO EAST END OF JOB)

MAINLINE SCHEDULE													
STA. TO STA.		LENGTH	WIDTH	HMA SURF CSE	POLY LEVEL BINDER (MM)	LEVEL BINDER (HM)	HMA SURF REM 2 1/4"	HMA SURF REM VARIABLE DEPTH	MIX FOR JTS, CRACKS & FLGWYS	BIT. MAT'L (PR CT)	AGG. (PR CT)	AGG SHLD TY B	TEMP RAMP
		FT	FT	TONS	TONS	TONS	SQ YD	SQ YD	TONS	GAL	TONS	TONS	SQ YD
1034+58	1154+50	1192	27	3022.0	1511.0	18.0	35976.0		10.8	4676.9	72.0	682.9	18.0
1154+50	1174+14	1964	29	531.6	265.8	3.2	6328.4		1.9	822.7	12.7	111.8	
1174+14	1179+12	498	26	120.8	60.4	0.7	1438.7		0.4	187.0	2.9	28.4	
1179+12	1191+44	1232	29	333.5	166.8	2.0	3969.8		1.2	516.1	7.9	70.2	
1191+44	1216+35	2491	26	604.5	302.3	3.6	7196.2		2.2	935.5	14.4	141.8	
1216+35	1236+48	2013	29	544.9	272.5	3.2	6486.3		1.9	843.2	13.0	114.6	
1236+48	1240+47	399	26	96.8	48.4	0.6	1152.7		0.3	149.8	2.3	22.7	
1240+47	1411+00	17053	29	4615.7	2307.9	27.5	54948.6		16.5	7143.3	109.9	971.1	
1411+00	1421+00	1000	32	298.7	149.4	1.8	3555.6		1.1	462.2	7.1		
1421+00	1425+50	450	39	163.8	50.4	0.6	1200.0	750.0	0.4	156.0	2.4		
1425+50	1431+50	600	39	224.0	64.4	0.8	1533.3	1066.7	0.5	199.3	3.1		
1431+50	1439+20	770	48.5	355.7	82.6	1.0	1967.8	2181.7	0.6	255.8	3.9		
1439+68	1458+78	1910	39	713.1	205.0	2.4	4881.1	3395.6	1.5	634.5	9.8		18.0
TOTALS				11974	5651	65	130634	7394	39	16982	261	2144	36

PAVEMENT MARKING SCHEDULE																					
LOCATION		PAINT 4"(3)	PAINT 4"(3)	PAINT 6"(3)	THERM 4"	THERM 4"	THERM 6"	THERM 6"	THERM 8"	THERM 12"	THERM 12"	THERM 24"	THERM LTR. & SYM.	TEMP MARK 4"	TEMP MARK 6"	TEMP MARK 8"	TEMP MARK 12"	TEMP MARK 24"	TEMP LTR. & SYM.	SHORT-TERM MARK	WORK ZONE PAVT MARK REM
		WHITE	YELLOW	YELL	WHITE	YELL	YELL	WHITE	WHITE	WHITE	YELL	WHITE	SQ. FT.	FOOT	FOOT	FOOT	FOOT	FOOT	FOOT	FOOT	FOOT
BUREAU COUNTY																					
1034+93	TO 1153+50	47428.0		5928.5										71142.0	8892.9					3557.1	391.3
1153+50	TO 1421+00 (2)	107000.0		10680.0										160500.0	16020.0					8025.0	882.8
1421+00	TO 1458+78							944.5							2833.5					1133.4	124.7
IL 40 INTERSECTION (STA 1153+50)									400.0	240.0		52.0					1200.0	720.0	156.0		
RR CROSSING (STA 1439+44)												78.0	324.0						234.0	972.0	
PARKING STRIPING (STA TO STA)					943.0	221.0					168.0			3492.0				504.0			
CROSSWALKS (STA 1432+00)							97.0			102.0		24.0			291.0			306.0	72.0		
NO PASSING ZONES (1)																					
RT STA 1037+75 - 1045+20 (SOLID YELLOW)			1490.0											2235.0							
LT STA 1046+75 - 1054+15 (SOLID YELLOW)			1480.0											2220.0							
RT STA 1083+70 - 1092+70 (SOLID YELLOW)			1800.0											2700.0							
LT STA 1094+80 - 1106+40 (SOLID YELLOW)			2320.0											3480.0							
RT STA 1124+90 - 1132+30 (SOLID YELLOW)			1480.0											2220.0							
LT & RT STA 1132+30 - 1136+50 (SOLID YELLOW)			1680.0											2520.0							
LT STA 1136+50 - 1147+10 (SOLID YELLOW)			2120.0											3180.0							
RT STA 1158+10 - 1166+60 (SOLID YELLOW)			1700.0											2550.0							
CENTERLINE STA 1166+60 - 1180+32.8 (DOUBLE YELLOW)			426.0											639.0							
LT STA 1180+32.8 - 1190+36 (SOLID YELLOW)			2006.0											3009.0							
RT STA 1208+31.2 - 1218+34.4 (SOLID YELLOW)			2006.0											3009.0							
CENTERLINE STA 1218+34.4 - 1220+45.6 (DOUBLE YELLOW)			844.0											1266.0							
LT STA 1220+45.6 - 1229+96 (SOLID YELLOW)			1902.0											2853.0							
RT STA 1231+54.4 - 1241+04.8 (SOLID YELLOW)			1902.0											2853.0							
CENTERLINE STA 1241+04.8 - 1264+80.8 (DOUBLE YELLOW)			9504.0											14256.0							
LT STA 1264+80.8 - 1274+84 (SOLID YELLOW)			2006.0											3009.0							
RT STA 1280+64.8 - 1290+15.2 (SOLID YELLOW)			1902.0											2853.0							
LT STA 1291+20.8 - 1300+71.2 (SOLID YELLOW)			1902.0											2853.0							
LT STA 1349+66 - 1354+56.8 (SOLID YELLOW)			982.0											1473.0							
RT STA 1368+82.4 - 1375+68.8 (SOLID YELLOW)			1374.0											2061.0							
LT STA 1376+74.4 - 1381+49.6 (SOLID YELLOW)			950.0											1425.0							
GRAND TOTAL		154428	41776	16609	943	221	945	97	400	342	168	154	324	297798	28037	1200	1530	462	972	12716	1399

- (1) R.E. TO VERIFY NO PASSING ZONES PRIOR TO MILLING OPERATION
- (2) CENTERLINE QUANTITIES SUBTRACTED IN THIS ROW WHERE THERE ARE DOUBLE YELLOW LINES.
- (3) PAINT PVT MARKING QUANTITIES ARE DOUBLED TO ACCOUNT FOR TWO APPLICATIONS-SEE SP PROVISIONS
- (4) TEMPORARY PAVEMENT MARKINGS TO BE PLACED ON THE MILLED SURFACE AND LEVELING BINDER. PLACE ON SURFACE COURSE IF NEEDED

FILE NAME =	USER NAME = *USER*	DESIGNED -	REVISED -	STATE OF ILLINOIS DEPARTMENT OF TRANSPORTATION	Schedule of Quantities	F.A.P. RTE.	SECTION	COUNTY	TOTAL SHEETS	SHEET NO.	
*FILE#		DRAWN -	REVISED -			613	(8C,9,10,11) RS-3	BUREAU	18	9	
	PLOT SCALE = *SCALE*	CHECKED -	REVISED -			CONTRACT NO. 66919					
	PLOT DATE = *DATE*	DATE -	REVISED -			SCALE:	SHEET NO.	OF SHEETS	STA.	TO STA.	ILLINOIS FED. AID PROJECT

SIDEWALK SCHEDULE FOR NEW RAMP INSTALLATION										
LOCATION SIDE STREET QUAD	STANDARD NUMBER	PCC SIDEWALK 4"	DETECTABLE WARNINGS		CC&G (SPEC)	SIDEWALK REMOVAL	CC&G REMOV (SPEC)	SOD, SALT TOLERANT	SUPPLEMENTAL WATERING	MANHOLE ADJUSTMENT
			US6/US34 ACCESS	SIDE ROAD ACCESS						
		SO FT	SO FT	SO FT	FOOT	SO FT	FOOT	SO YD	UNIT	EACH
WEST ST										
NW	424026	118	8	8	0	118	0	6	0.162	
NE*	424001**	112	8	8	6	50	20	6	0.162	
SW		0	0	0	0	0	0	0	0	
SE	424001**	192	16	0	0	192	0	0	0	
ARCH										
NW	424001***	76	8	8	10	40	6	6	0.162	
NE	424001***	60		8	12	60	12	6	0.162	
SW	424001***	76	8	8	16	27	16	6	0.162	
SE	424001***	98	8	10	8	47	8	3	0.081	
ALLEY										
NE	424026	20	0	8	0	20	0	0	0	
NW	424026	20	0	8	0	20	0	0	0	
SE	424026	20		8	0	20	0	0	0	
SW	424026	20		8	0	20	0	0	0	
LOCUST										
NW	424006	79	10	10	0	79	0	0	0	
NE	424001**	86	10	10	8	50	8	0	0	
SW	424001**	86	10	10	0	86	0	10.5	0.2835	1
SE	424006	40	10	10	0	40	0	0	0	
ALLEY										
NE	424026	20	0	8	0	20	0	0	0	
NW	424026	20	0	8	0	40	0	0	0	
KING ST										
NW	424001***	76	8	8	0	20	0	0	0	
NE	424001***	76	8	8	0	20	0	0	0	
RAILROAD ST										
NW	424001**	20	8			20	0	0	0	
WALNUT ST										
SE	424001***	48	8			48	0	0	0	
NE	424001***	42	8		6	16	6	0	0	
MAPLE ST										
SW	424001***	76	8	8	0	20	0	0	0	
SE	424001***	76	8	8	0	20	0	15	0.405	
CEMETERY										
WEST ENTRANCE:										
NW	424001***	76	8	8	6	20	6	15	0.405	
NE	424001***	76	8	8	6	20	6	15	0.405	
EAST ENTRANCE:										
NW	424001***	76		8	6	20	6	15	0.405	
TOTALS		1785	168	178	84	1153	94	104	1	1

* THIS H/C RAMP HAS SOME 6" RETAINING WALL TO BE REMOVED AND EXCAVATION NEEDED IN ORDER TO COMPLETE H/C RAMP, AND SHOULD BE INCLUDED IN S/W REMOVAL COSTS.
 ** 424001 < 5' PAVED AREA
 *** 424001 < 5' LANDSCAPE AREA
 ALL EXCAVATION NEEDED TO INSTALL NEW SIDEWALK INCLUDED IN THE COST OF PCC SIDEWALK, 4"

TIE POINTS		BUREAU COUNTY			
STATION	DESCRIPTION	EXISTING MONUMENT TYPE	PROPOSED MONUMENT TYPE	MONUMENT RECORD TO BE RECORDED	RESPONSIBILITY
	S. QTR CORNER SECTION 17-16-7E		TYPE 1	YES	2
	NW CORNER SECTION 21-16-7E		TYPE 1	YES	2
	S. QTR CORNER SECTION 16-16-7E		TYPE 1	YES	2
	SF CORNER SECTION 16-16-7E	MAG NAIL	TYPE 1	YES	2
	S. QTR CORNER SECTION 15-16-7E	PK NAIL	TYPE 1	YES	2
	SF CORNER SECTION 15-16-7E		TYPE 1	YES	2
	S. QTR CORNER SECTION 14-16-7E	PK NAIL	TYPE 1	YES	2
	SW CORNER SECTION 13-16-7E	PK NAIL	TYPE 1	YES	2
	S. QTR CORNER SECTION 13-16-7E		TYPE 1	YES	2
	SF CORNER SECTION 13-16-7E (SAME AS SW CORNER SECTION 18-16-8E)		TYPE 1	YES	2
	S. QTR CORNER SECTION 18-16-8E		TYPE 1	YES	2
	SF CORNER SECTION 18-16-8E	PK NAIL	TYPE 1	YES	2
	SF CORNER SECTION 17-16-8E	MAG NAIL	TYPE 1	YES	2

NOTE: FOR ALL MONUMENT LOCATIONS SEE TIE SKETCHES

RESPONSIBILITY:
 1) RESIDENT TO RE-ESTABLISH MONUMENT
 2) RESIDENT TO RE-ESTABLISH MONUMENT AND FURNISH TIE SKETCHES TO D-3 PLATS AND PLANS
 (PAY ITEM REQUIRED, PERMANENT SURVEY MARKER, TYPE 1)

SHOULDER SCHEDULE						
LOCATION	SIDE	LENGTH	AREA	HMA SHLD 5"	EX & GRADING EXIST SHLD	
STATION		FT	SO. YD.	SO YD	UNIT	
1034+58 TO 1154+50	LT & RT	11992	3997	3997	239.8	
TOTALS				3997	240	

ADJUSTMENTS			
LOCATION STATION	SIDE	WATER VALVES TO BE ADJUSTED (EACH)	MANHOLES TO BE ADJUSTED (EACH)
BETWEEN HAZELWOOD AND MAPLE	LT		1.0
BETWEEN WALNUT AND KING	LT		1.0
BETWEEN WEST AND CONTY HWY 8	LT		1.0
BY KING STREET AND THE RR	RT	1	1.0
BETWEEN WALNUT AND MAPLE	RT	1	
TOTALS		2	4

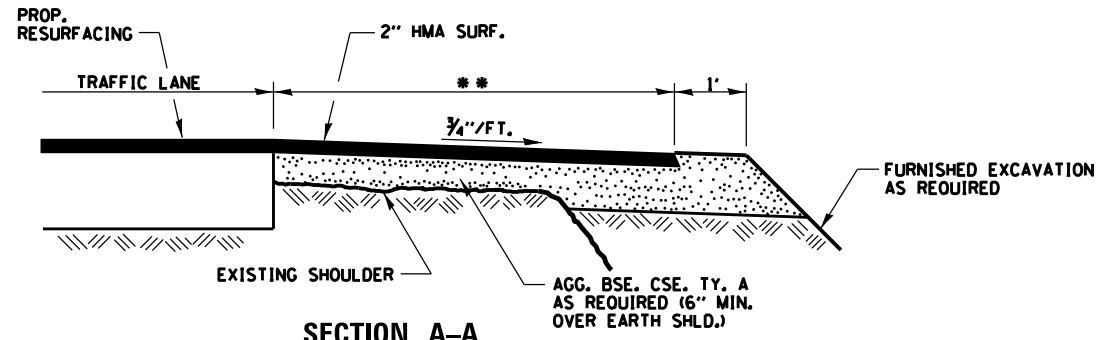
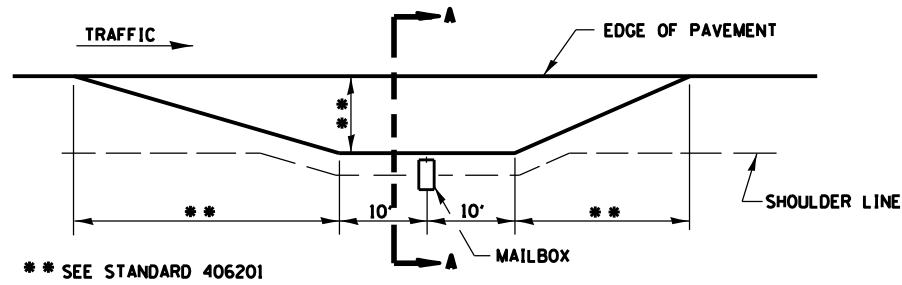
ENTRANCE SCHEDULE										
SIDEROAD OR DESCRIPTION	STA	SIDE	EXIST MAT	INC HMA SURF	HMA SURF CSE	BIT MAT'L (PR CT)	AGG (PR CT)	HMA SURF REM VAR. DEPTH**	TEMP RAMP	FURNISHED EXCAVATION***
PE	1036+64	LT	HMA	3.7		4.3	0.1	33.3		
MB	1036+64	RT	HMA	1.1		1.3	0.0	10.0		
PE+MB	1045+50	RT	HMA	5.0		5.9	0.1	45.0		
FE	1047+55	RT	AGG							
FE	1047+75	LT	AGG							
PE	1062+38	RT	HMA	3.4		4.0	0.1	30.6		
FE	1062+38	LT	AGG							
FE	1071+60	RT	AGG							
PE	1072+20	LT	AGG	3.9		4.6	0.1	35.0		
FE	1075+00	LT	AGG							
FE	1077+20	RT	AGG							
FE	1090+18	RT	HMA	5.0		5.9	0.1	45.0		
FE	1091+25	RT	AGG							
FE	1094+73	RT	AGG							
PE+MB	1096+02	RT	HMA	6.2		7.2	0.1	55.0		
FE	1097+22	LT	AGG							
SR 800 E	1101+32	RT	HMA	38.8		45.1	0.7	346.6	8.0	2.0
SR 800 E	1101+32	LT	HMA	32.6		37.9	0.6	291.5	8.0	2.0
PE+MB	1111+50	RT	HMA	5.0		5.9	0.1	45.0		
FE	1113+81	RT	AGG							
FE	1117+18	RT	AGG							
FE	1117+18	LT	AGG							
FE	1127+61	LT	AGG							
FE	1140+60	LT	AGG							
CE	1141+26	LT	HMA	4.3		5.0	0.1	38.8		
PE	1143+80	LT	HMA	4.0		4.7	0.1	36.0		
MB	1143+80	RT	HMA	4.3		4.9	0.1	38.0		
SR IL 40	1153+50	RT	HMA		20.0	22.8	0.4	175.0	8.0	2.0
SR IL 40	1153+50	LT	HMA		20.0	22.8	0.4	175.0	8.0	2.0
FE	1164+32	RT	AGG							
PE+MB	1166+92	RT	HMA	4.0		4.7	0.1	36.1		
MB	1176+60	RT	HMA	5.6		6.5	0.1	50.0		
CE+MB	1176+60	LT	HMA	5.6		6.5	0.1	50.0		
FE	1189+67	RT	AGG							
SR 975 E	1194+60	RT	HMA	20.2		23.4	0.4	180.0	8.0	2.0
SR 975 E	1194+60	LT	HMA	20.2		23.4	0.4	180.0	8.0	2.0
PE+MB	1195+76	LT	HMA	4.3		5.0	0.1	38.8		
PE+MB	1200+25	LT	HMA	4.0		4.7	0.1	36.1		
FE	1217+00	LT	AGG							
PE+MB	1217+08	RT	HMA	4.5		5.2	0.1	40.0		
PE+MB	1220+65	LT	HMA	3.7		4.3	0.1	33.3		
PE+MB	1222+90	RT	HMA	4.4		5.1	0.1	38.9		
FE	1234+53	LT	AGG							
FE	1240+38	RT	AGG							
FE	1244+07	LT	AGG							
FE	1250+60	LT	AGG							
PE+MB	1257+45	RT	HMA	5.6		6.5	0.1	50.0		
MB	1258+40	LT	HMA	7.8		9.1	0.1	70.0		
PE+MB	1259+45	RT	HMA	5.0		5.8	0.1	44.4		
FE	1259+45	LT	AGG							
PE+MB	1272+27	RT	HMA	7.5		8.7	0.1	66.6		
FE+MB	1274+76	LT	HMA	7.3		8.5	0.1	65.0		
PE	1280+00	LT	HMA	5.0		5.9	0.1	45.0		
FE	1280+30	RT	AGG							
FE	1280+70	LT	AGG							
FE	1292+46	LT	AGG							
FE	1295+17	RT	AGG							
FE	1309+25	RT	HMA	5.0		5.8	0.1	44.4		
CE	1310+79	RT	HMA	5.6		6.5	0.1	50.0		
SR 1200 E	1316+14	RT	HMA	20.2		23.4	0.4	180.0	8.0	2.0
SR 1200 E	1316+14	LT	HMA	20.2		23.4	0.4	180.0	8.0	2.0
FE	1320+95	RT	AGG							
PE+MB	1332+50	RT	HMA	6.2		7.2	0.1	55.6		
MB	1332+50	LT	HMA	1.7		2.0	0.0	15.0		
PE	1335+00	LT	HMA	3.9		4.6	0.1	35.0		
CE+MB	1350+73	RT	HMA	6.4		7.4	0.1	56.7		
SUBTOTAL				301.4	40.0	395.3	6.1	3040.7	64.0	16.0

FILE NAME =	USER NAME = \$USER*	DESIGNED -	REVISED -	STATE OF ILLINOIS DEPARTMENT OF TRANSPORTATION	Schedule of Quantities	F.A.P. RTE.	SECTION	COUNTY	TOTAL SHEETS	SHEET NO.	
\$FILEL\$		DRAWN -	REVISED -			613	(8C,9,10,11) RS-3	BUREAU	18	11	
PLOT SCALE = \$SCALE*		CHECKED -	REVISED -			CONTRACT NO. 66919					
PLOT DATE = \$DATE*		DATE -	REVISED -			SCALE:	SHEET NO.	OF	SHEETS	STA.	TO
ILLINOIS FED. AID PROJECT											

ENTRANCE SCHEDULE										
SIDEROAD OR DESCRIPTION	STA	SIDE	EXIST MAT	INC HMA SURF	HMA SURF CSE	BIT MAT'L (PR CT)	AGG (PR CT)	HMA SURF REM VAR. DEPTH**	TEMP RAMP	FURNISHED EXCAVATION***
FE	1353+79	RT	AGG							
FE	1353+79	LT	AGG							
CE+MB	1366+94	RT	HMA	7.5		8.7	0.1	66.7		
CE+MB	1375+61	RT	HMA	7.5		8.7	0.1	66.7		
FE	1378+82	RT	AGG							
FE	1380+30	LT	AGG							
FE	1385+85	RT	AGG							
PE+MB	1393+85	LT	HMA	7.5		8.7	0.1	66.7		
FE	1394+00	RT	AGG							
FE	1406+30	RT	AGG							
FE	1407+27	LT	AGG							
CE	1411+12	LT	HMA	5.7		6.6	0.1	51.1		
CE	1412+00	LT	HMA	5.8		6.8	0.1	52.0		
CE	1413+00	LT	HMA	5.8		6.8	0.1	52.0		
SR CO. RD. 8	1415+41	RT	HMA	112.0		130.0	2.0	1000.0		
PE + MB	1416+47	LT	HMA	3.9		4.6	0.1	35.0		
PE	1417+33	LT	HMA	2.2		2.6	0.0	20.0		
PE	1417+33	RT	HMA	2.8		3.3	0.1	25.0		
PE	1418+54	RT	HMA	2.2		2.6	0.0	20.0		
PE	1419+18	LT	HMA	2.2		2.6	0.0	20.0		
PE	1419+91	LT	HMA	2.8		3.3	0.1	25.0		
PE	1420+27	RT	HMA	2.8		3.3	0.1	25.0		
PE	1420+71	RT	HMA	2.8		3.3	0.1	25.0		
CE	1421+60	RT	HMA	5.6		6.5	0.1	50.0		
SR WEST ST.	1422+12	RT	HMA	20.2		23.4	0.4	180.0	8.0	2.0
SR WEST ST.	1422+12	LT	HMA	17.1		19.9	0.3	153.0	8.0	2.0
PE	1423+34	RT	HMA	6.7		7.8	0.1	60.0		
PE	1424+17	RT	HMA	2.2		2.6	0.0	20.0		
SR ARCH ST.	1426+74	RT	HMA	14.2		16.5	0.3	127.0	8.0	2.0
SR ARCH ST.	1426+74	LT	HMA	14.2		16.5	0.3	127.0	8.0	2.0
PE	1428+43	RT	HMA	2.2		2.6	0.0	20.0		
PE	1430+79	RT	HMA	2.8		3.3	0.1	25.0		
PE	1430+02	LT	PCC							
PE/ALLEY	1431+06	RT	HMA					35.0		
PE/ALLEY	1431+06	LT	HMA					35.0		
PE	1431+83	RT	HMA	2.2		2.6	0.0	20.0		
SR LOCUST ST.	1432+74	RT	HMA	16.8		19.5	0.3	150.0	8.0	2.0
SR LOCUST ST.	1432+74	LT	HMA	16.8		19.5	0.3	150.0	8.0	2.0
PE	1434+54	LT	PCC							
PE	1435+10	LT	PCC							
CE	1435+85	RT	HMA	3.9		4.6	0.1	35.0		
CE	1436+57	LT	PCC							
SR KING ST	1437+56	LT	HMA	23.2		26.9	0.4	207.0	8.0	2.0
CE	1437+92	RT	HMA	3.4		3.9	0.1	30.0		
SR RAILROAD ST	1438+50	LT	HMA	27.1		31.5	0.5	242.0	8.0	2.0
CE	1439+20	LT	AGG							
CE	1440+09	LT	HMA	12.5		14.6	0.2	112.0		
CE	1441+40	LT	HMA	5.6		6.5	0.1	50.0		
SR WALNUT ST	1442+51	RT	HMA	36.6		42.5	0.7	327.0	8.0	2.0
CE	1442+98	LT	AGG							
CE	1443+38	RT	PCC							
CE	1443+87	LT	AGG							
PE	1440+70	RT	PCC							
CE	1445+28	LT	AGG							
PE	1446+17	LT	HMA	2.8		3.3	0.1	25.0		
PE	1446+92	LT	HMA	2.8		3.3	0.1	25.0		
CE	1446+92	RT	HMA	2.8		3.3	0.1	25.0		
SR MAPLE ST.	1447+34	LT	HMA	16.1		18.7	0.3	144.0	8.0	2.0
PE	1447+82	LT	HMA	3.1		3.6	0.1	28.0		
PE	1448+81	LT	HMA	2.8		3.3	0.1	25.0		
PE	1449+31	LT	HMA	2.2		2.6	0.0	20.0		
SR 2ND ST.	1449+73	RT	HMA	14.2		16.5	0.3	127.0	8.0	2.0
PE	1450+93	LT	HMA	2.2		2.6	0.0	20.0		
PE	1451+91	LT	HMA	2.8		3.3	0.1	25.0		
PE	1451+91	RT	HMA	2.2		2.6	0.0	20.0		
PE	1452+68	RT	PCC							
PE	1454+19	LT	PCC							
PE	1455+06	LT	PCC							
CE	1455+48	LT	PCC							
PE	1456+13	LT	PCC							
PE	1456+45	LT	PCC							
CE	1457+40	LT	PCC							
PE	1458+18	RT	PCC							
SR HAZELWOOD ST.	1458+78	RT	HMA	17.2		20.0	0.3	154.0	8.0	2.0
SUBTOTAL				478.6	0.0	555.5	8.5	4343.2	96.0	24.0
TOTAL				780	40	951	15	7384	160	40

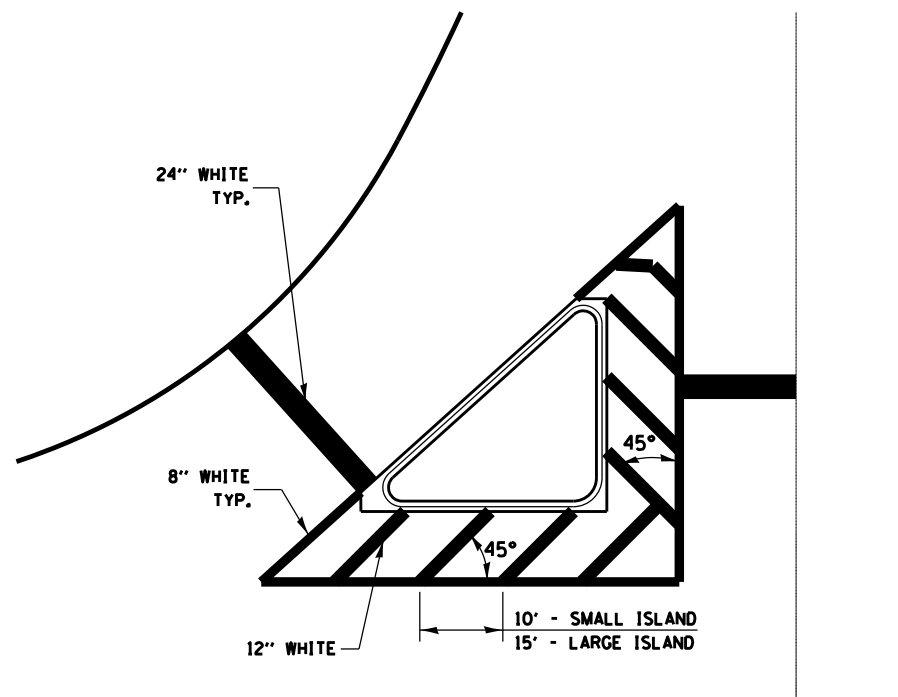
* NOTE: ALL STATION ARE APPROXIMATE +/-
**VARY MILLING DEPTH FROM 2-1/4" TO 1-1/2"
*** THIS AREA TO BE SEEDED, FERTILIZED AND MULCHED. THIS IS NOT PAID FOR SEPERATELY BUT INCLUDED IN THE PRICE OF FURNISHED EXCAVATION

FILE NAME =	USER NAME = \$USER*	DESIGNED -	REVISED -	STATE OF ILLINOIS DEPARTMENT OF TRANSPORTATION	Schedule of Quantities				F.A.P. RTE.	SECTION	COUNTY	TOTAL SHEETS	SHEET NO.		
*FILE#		DRAWN -	REVISED -		SCALE:	SHEET	OF	SHEETS	STA.	TO STA.	613	(8C.9.10.11) R5-3	BUREAU	18	12
	PLOT SCALE = \$SCALE*	CHECKED -	REVISED -										CONTRACT NO.	66919	
	PLOT DATE = \$DATE*	DATE -	REVISED -										ILLINOIS FED. AID PROJECT		

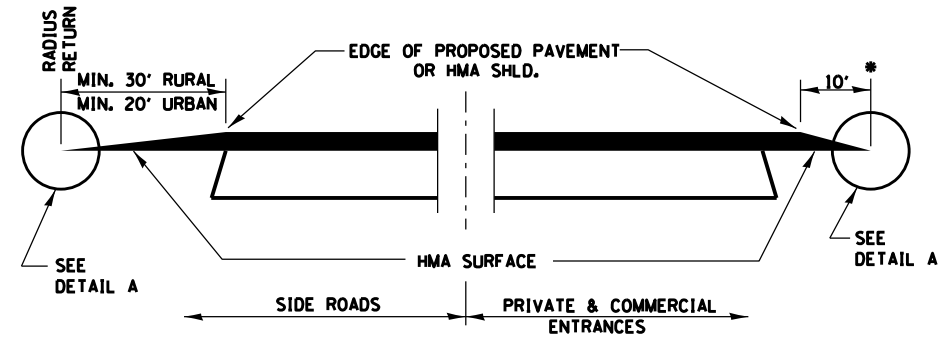


SECTION A-A

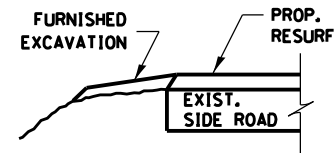
RURAL MAILBOX TURNOUT DETAILS



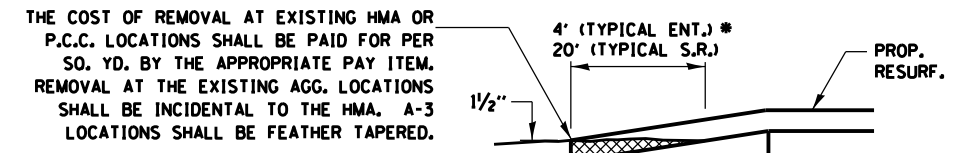
TYPICAL ISLAND AT IL 40 INTERSECTION



**SECTION A-A
DETAILS AT ENTRANCES & SIDE ROADS**

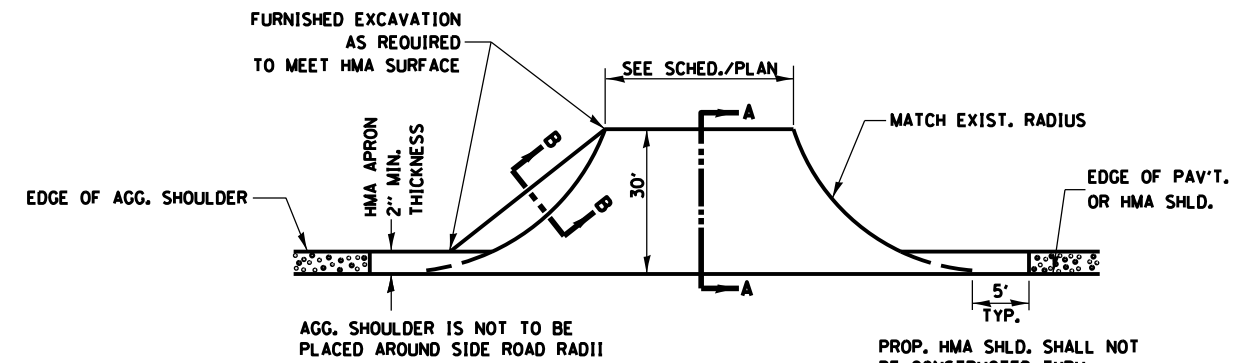


SECTION B-B

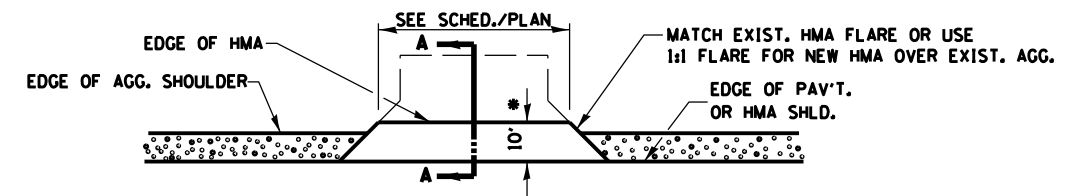


DETAIL A

THE COST OF REMOVAL AT EXISTING HMA OR P.C.C. LOCATIONS SHALL BE PAID FOR PER SQ. YD. BY THE APPROPRIATE PAY ITEM. REMOVAL AT THE EXISTING AGG. LOCATIONS SHALL BE INCIDENTAL TO THE HMA. A-3 LOCATIONS SHALL BE FEATHER TAPERED.



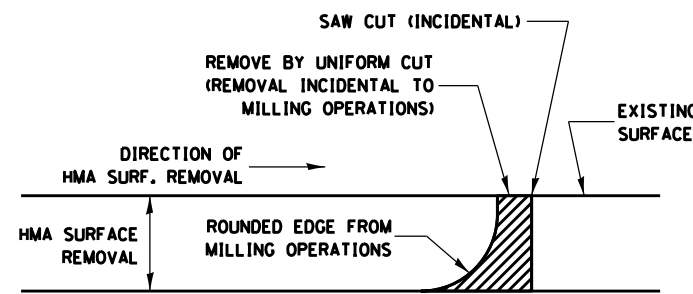
PLAN AT SIDE ROADS



PLAN AT PRIVATE & COMMERCIAL ENTRANCES

(DO NOT RESURFACE FIELD ENTRANCES)

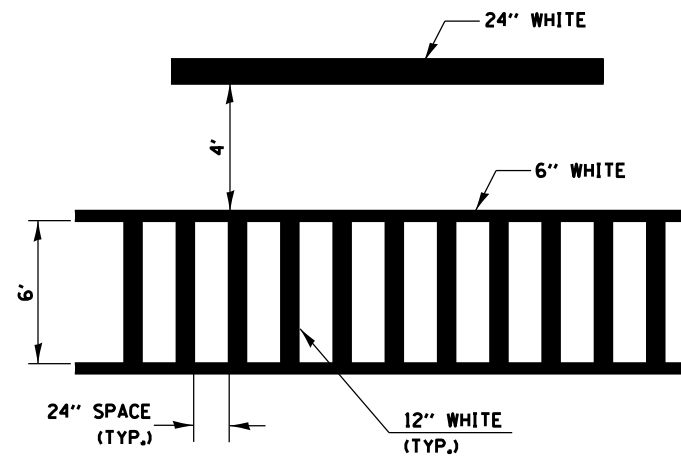
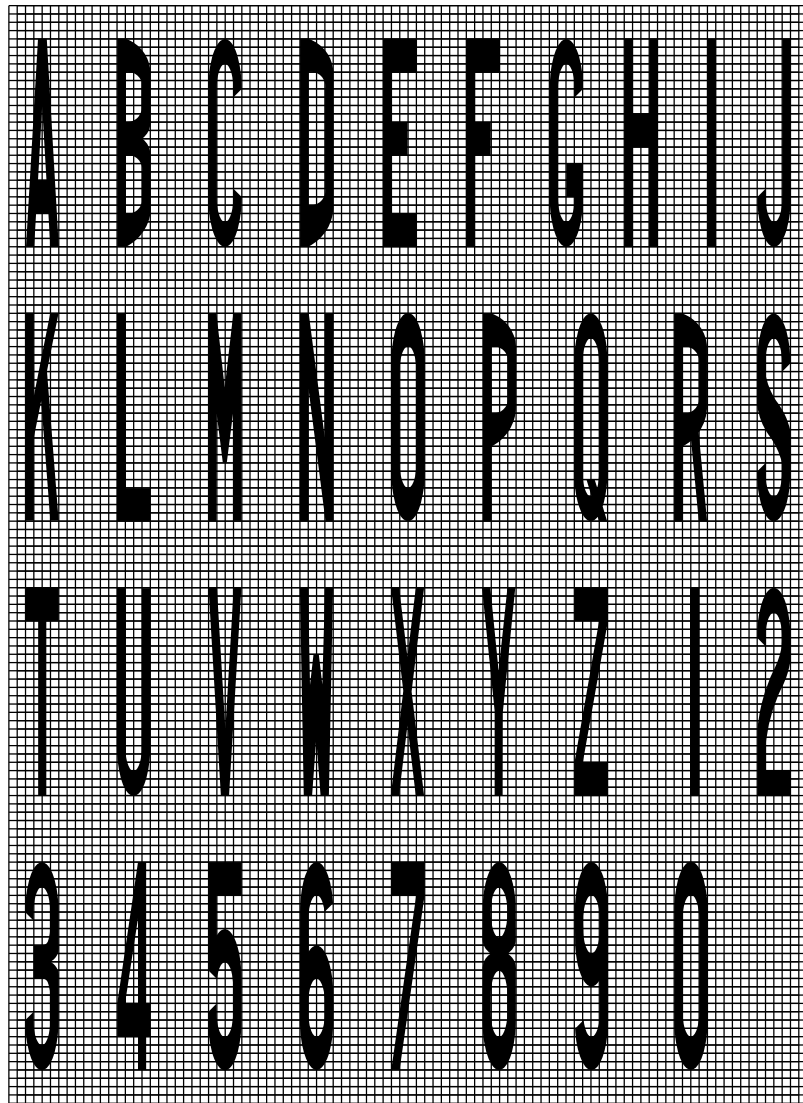
* PROPOSED HMA RESURFACING AT PUBLIC EDUCATIONAL FACILITY ENTRANCES SHALL BE EXTENDED TO THE RIGHT-OF-WAY LIMITS.



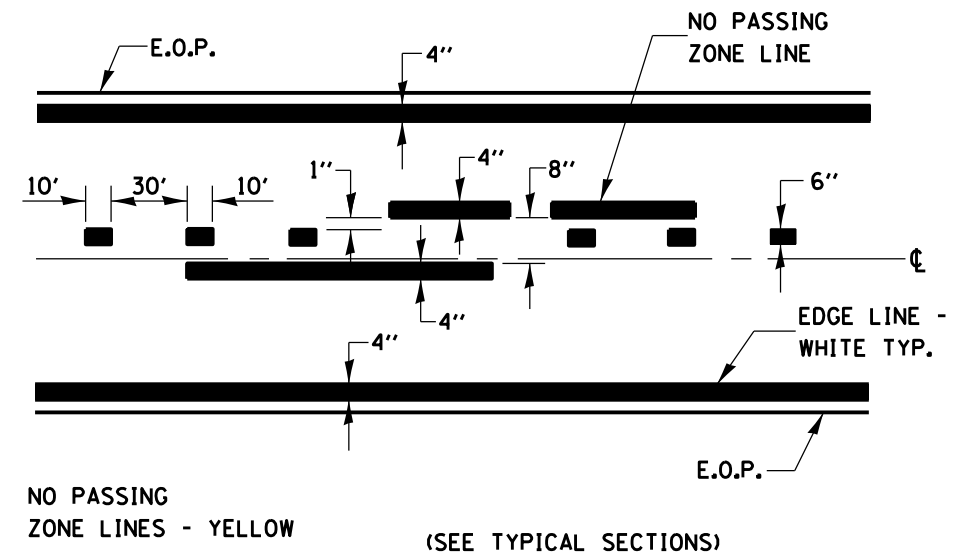
NOTE:
WHEN MILLING OPERATIONS PRODUCE A ROUNDED EDGE, THEN A SAW CUT SHALL BE USED TO MANUFACTURE A PERPENDICULAR EDGE AS SHOWN IN THE DETAIL. THE ENGINEER SHALL BE THE SOLE JUDGE CONCERNING THE USE OF THIS DETAIL

HMA DETAIL AT BUTT JOINTS

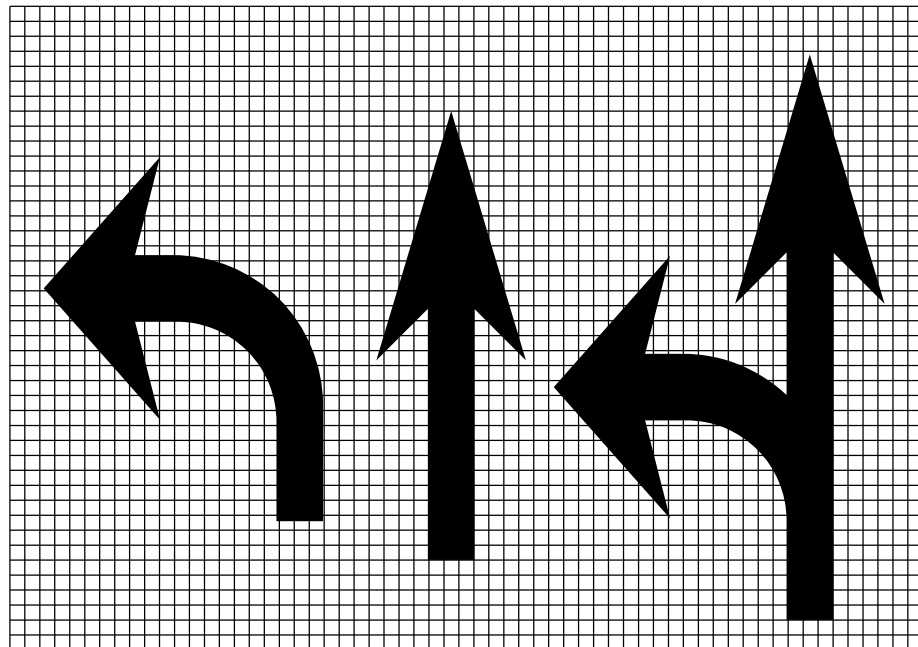
FILE NAME =	USER NAME = \$USER\$	DESIGNED -	REVISED -	STATE OF ILLINOIS DEPARTMENT OF TRANSPORTATION	DETAILS			F.A.P. RTE.	SECTION	COUNTY	TOTAL SHEETS	SHEET NO.			
\$FILE\$		DRAWN -	REVISED -					613	(8C,9,10,11) RS-3	BUREAU	18	13			
	PLOT SCALE = \$SCALE\$	CHECKED -	REVISED -					CONTRACT NO. 66919							
	PLOT DATE = \$DATE\$	DATE -	REVISED -					ILLINOIS FED. AID PROJECT							
				SCALE:	SHEET NO.	OF	SHEETS	STA.	TO	STA.					



**TYPICAL SPACING DETAIL FOR
CROSSWALKS AND STOP BARS**



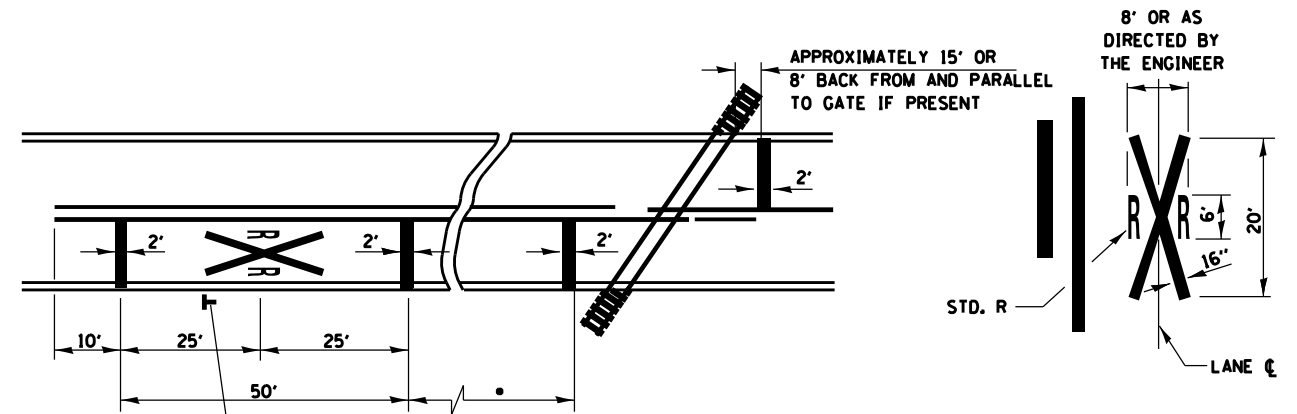
PAVEMENT MARKING



LEGEND HEIGHT	ARROW SIZE	o
6'	SMALL	2.9
8'	LARGE	3.8

THE SPACE BETWEEN ADJACENT LETTERS OR NUMERALS SHOULD BE APPROXIMATELY 3' FOR 6' LEGEND AND 4' FOR 8' LEGEND.

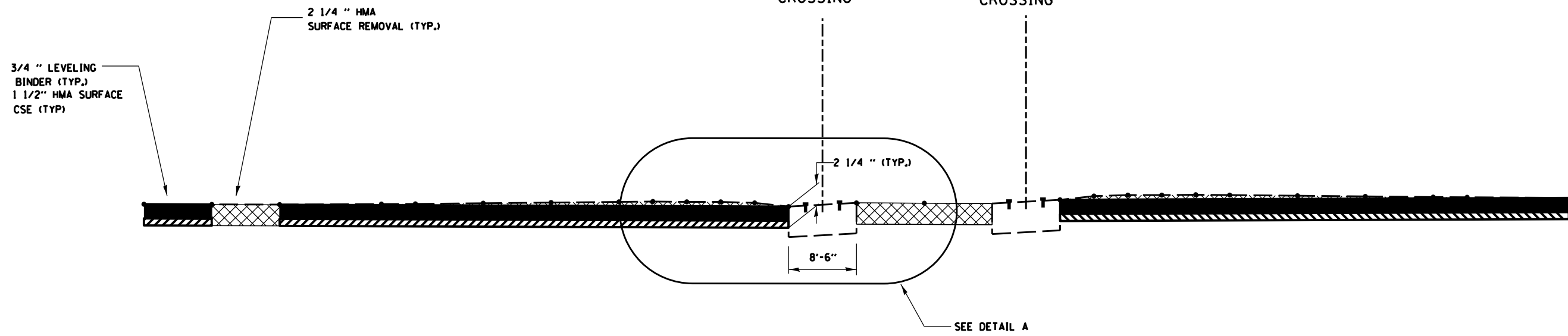
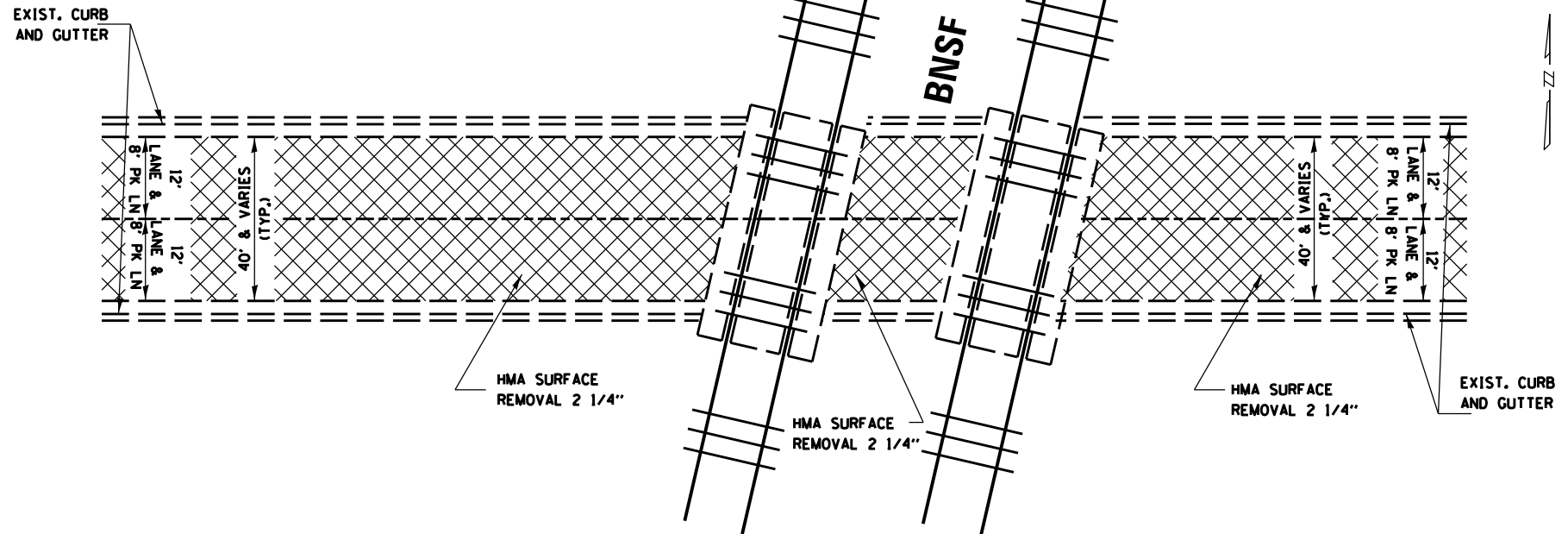
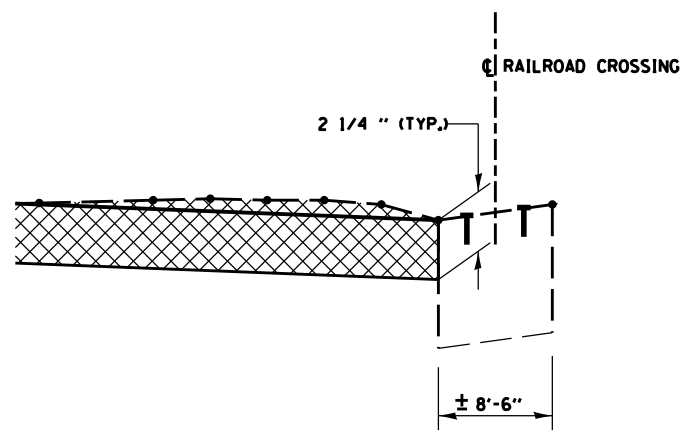
LETTER AND ARROW GRID SCALE



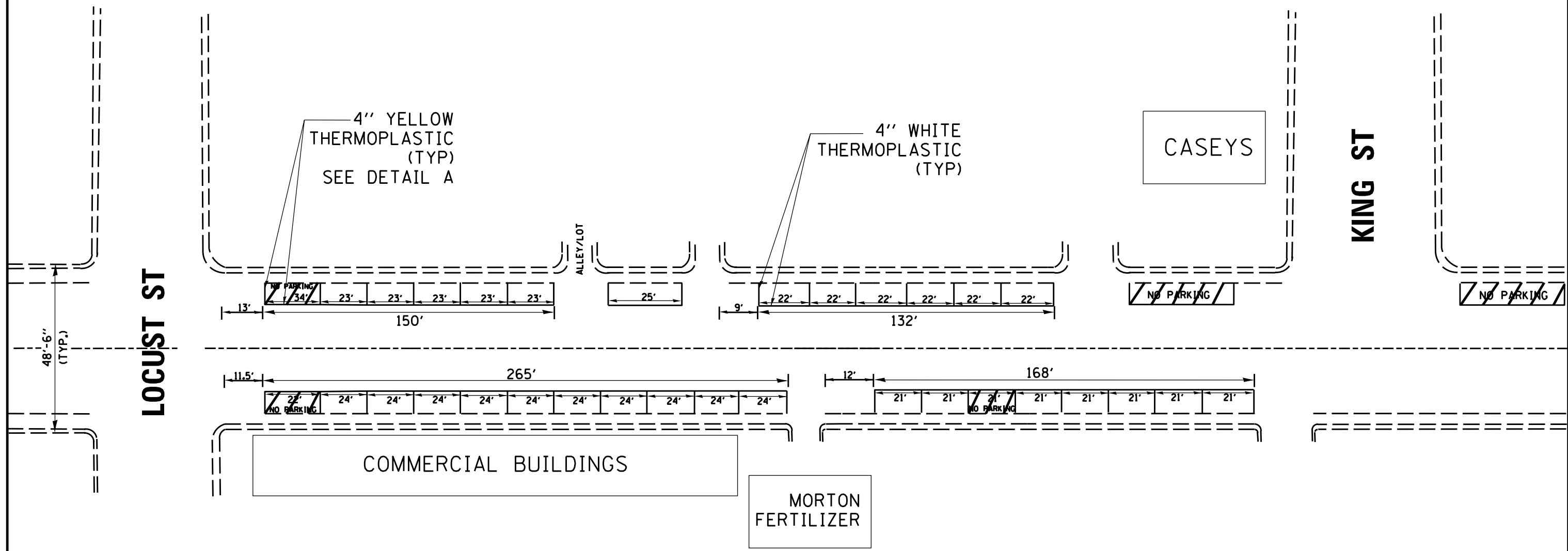
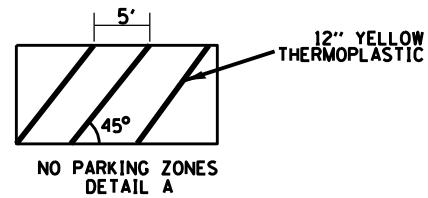
- MINIMUM DISTANCE
400' FOR 55 MPH
250' FOR 45 MPH
100' FOR 35 MPH OR LESS

**PAVEMENT MARKINGS AT
RAILROAD-HIGHWAY GRADE CROSSING**

NOTES:
THE TRANSVERSE SPREAD OF THE "X" MAY VARY ACCORDING TO LANE WIDTH.
ON MULTI-LANE ROADS, THE STOP LINES SHALL EXTEND ACROSS ALL APPROACH LANES AND SEPARATE RXR SYMBOLS SHALL BE PLACED ADJACENT TO EACH OTHER IN EACH LANE.
WHEN THE PAVEMENT MARKING SYMBOL IS USED, A PORTION OF THE SYMBOL SHOULD BE LOCATED DIRECTLY ADJACENT TO THE ADVANCE WARNING SIGN (W10-1).



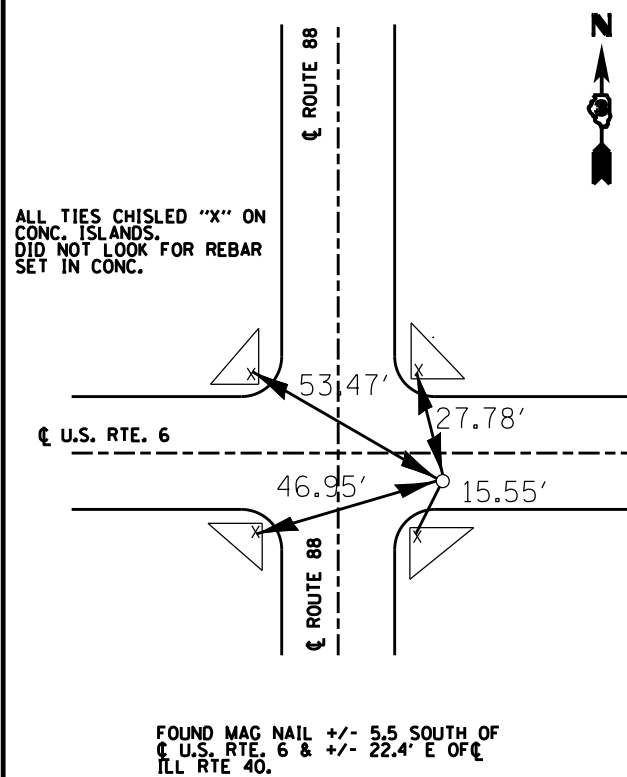
FILE NAME = *FILEL*	USER NAME = *USER*	DESIGNED -	REVISED -	STATE OF ILLINOIS DEPARTMENT OF TRANSPORTATION	DETAILS AT RAILROAD CROSSING			F.A.P. RTE.	SECTION	COUNTY	TOTAL SHEETS	SHEET NO.
		DRAWN -	REVISED -					613	(8C,9,10,11) RS-3	BUREAU	18	15
		CHECKED -	REVISED -		CONTRACT NO. 66919							
		DATE -	REVISED -		SCALE:	SHEET NO.	OF	SHEETS	STA.	TO	STA.	ILLINOIS FED. AID PROJECT



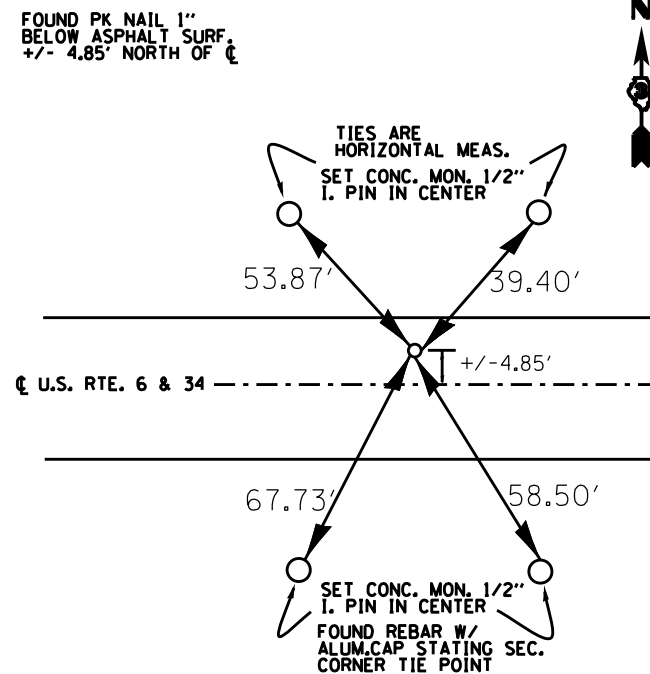
NOT TO SCALE

FILE NAME = *FILEL*	USER NAME = *USER*	DESIGNED -	REVISED -	STATE OF ILLINOIS DEPARTMENT OF TRANSPORTATION	PAVEMENT MARKING DETAILS	F.A.P. RTE.	SECTION	COUNTY	TOTAL SHEETS	SHEET NO.	
	PLOT SCALE = *SCALE*	DRAWN -	REVISED -			613	(8C,9,10,11) RS-3	BUREAU	18	16	
	PLOT DATE = *DATE*	CHECKED -	REVISED -			CONTRACT NO. 66919					
		DATE -	REVISED -			ILLINOIS FED. AID PROJECT					
					SCALE:	SHEET NO.	OF	SHEETS	STA.	TO STA.	

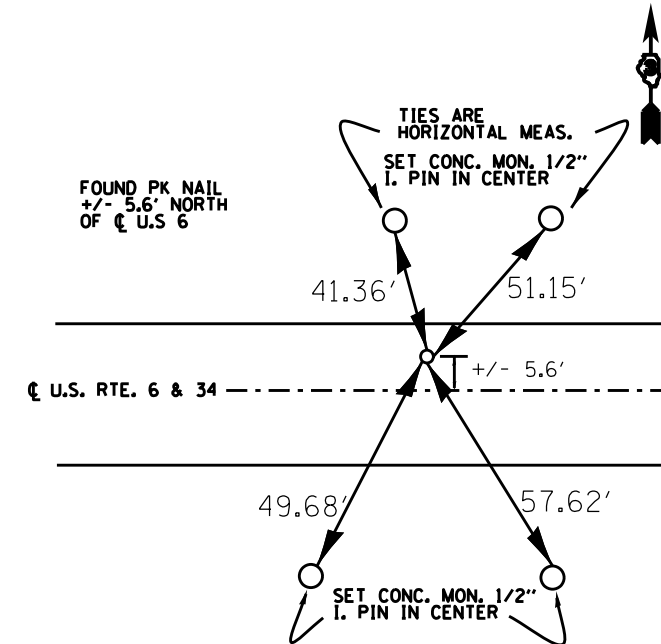
SE CORNER SECTION 16-16-7E



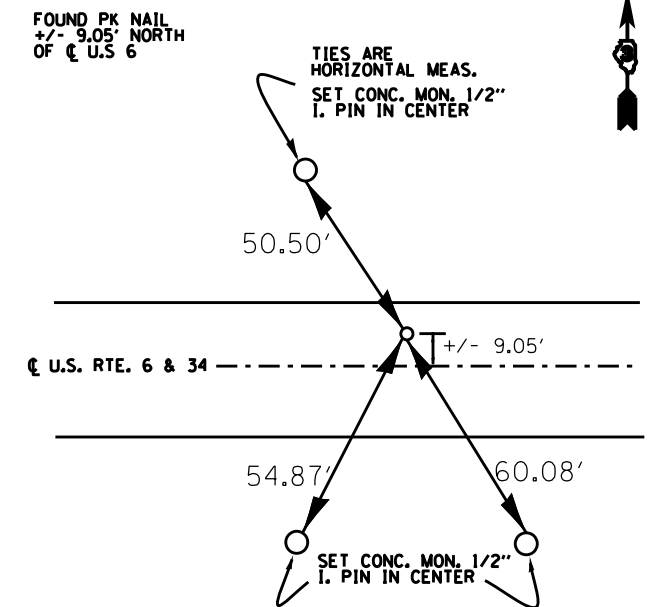
S QTR CORNER SECTION 15-16-7E



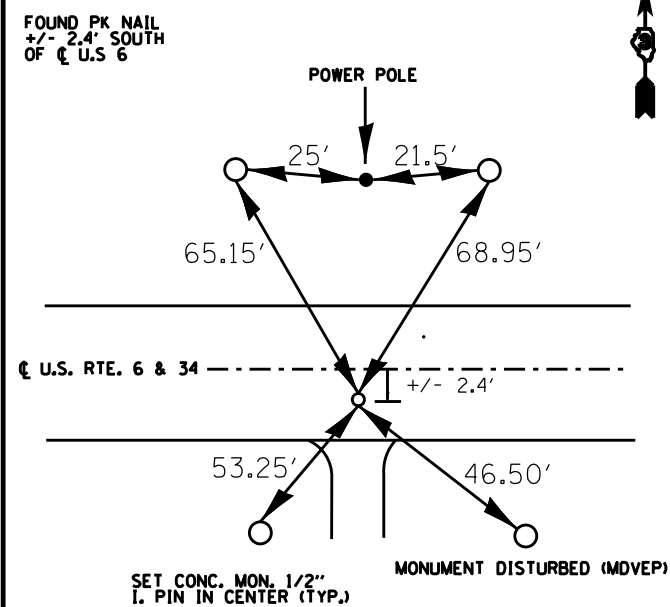
S QTR CORNER SECTION 14-16-7E



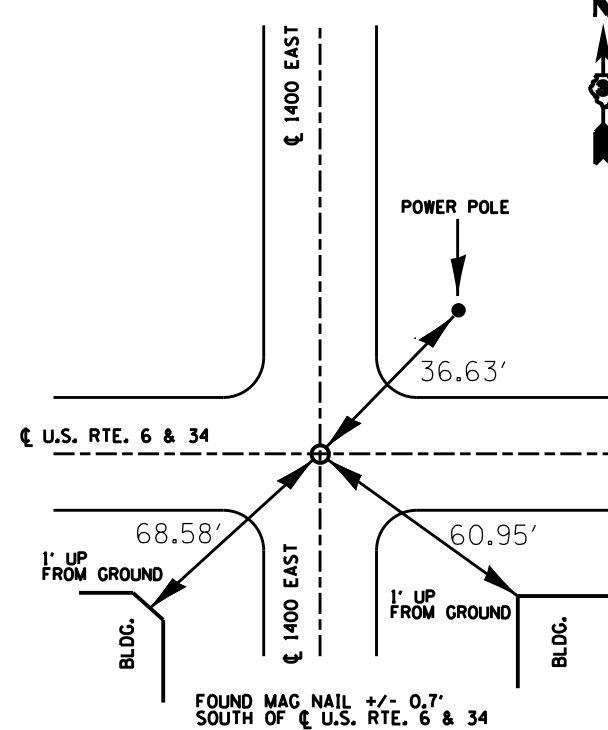
SW CORNER SECTION 13-16-7E



SE CORNER SECTION 18-16-8E

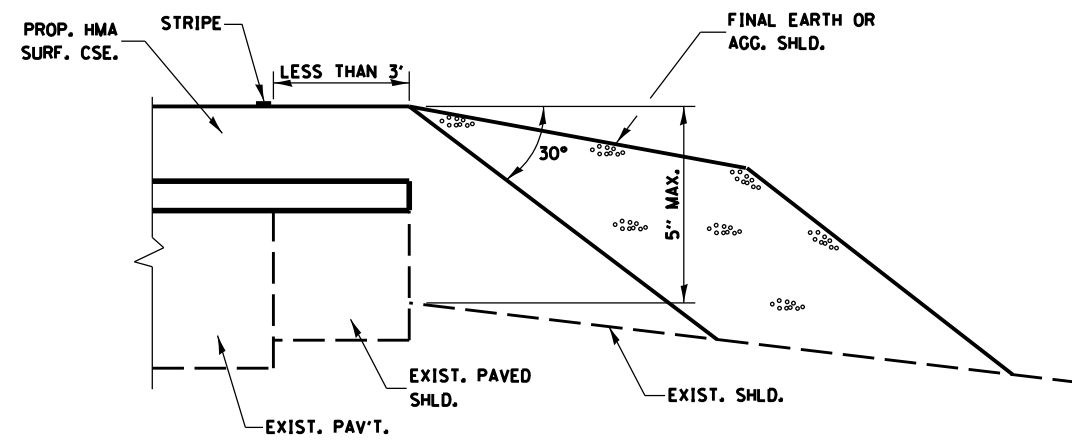


SE CORNER SECTION 17-16-8E



SEE COMMITMENT FILE FOR ADDITIONAL TIE POINTS

FILE NAME =	USER NAME = #USER#	DESIGNED -	REVISED -	STATE OF ILLINOIS DEPARTMENT OF TRANSPORTATION	TIE POINTS				F.A.P. RTE.	SECTION	COUNTY	TOTAL SHEETS	SHEET NO.
#FILE#		DRAWN -	REVISED -						613	10C. 9, 10, 11	RS-3	BUREAU	18
	PLOT SCALE = #SCALE#	CHECKED -	REVISED -		SCALE: SHEET NO. OF SHEETS STA. TO STA.				CONTRACT NO. 66919				
	PLOT DATE = #DATE#	DATE -	REVISED -						ILLINOIS FED. AID PROJECT				



SAFETY EDGE

406-15

FILE NAME = *FILE*	USER NAME = *USER*	DESIGNED -	REVISED -	STATE OF ILLINOIS DEPARTMENT OF TRANSPORTATION	TIE POINTS				F.A.P. RTE.	SECTION	COUNTY	TOTAL SHEETS	SHEET NO.
		DRAWN -	REVISED -		613	OC. 9, 10, 11	RS-3	BUREAU	18	18			
		CHECKED -	REVISED -		SCALE: SHEET NO. OF SHEETS STA. TO STA.				CONTRACT NO. 66919				
		DATE -	REVISED -		ILLINOIS FED. AID PROJECT								