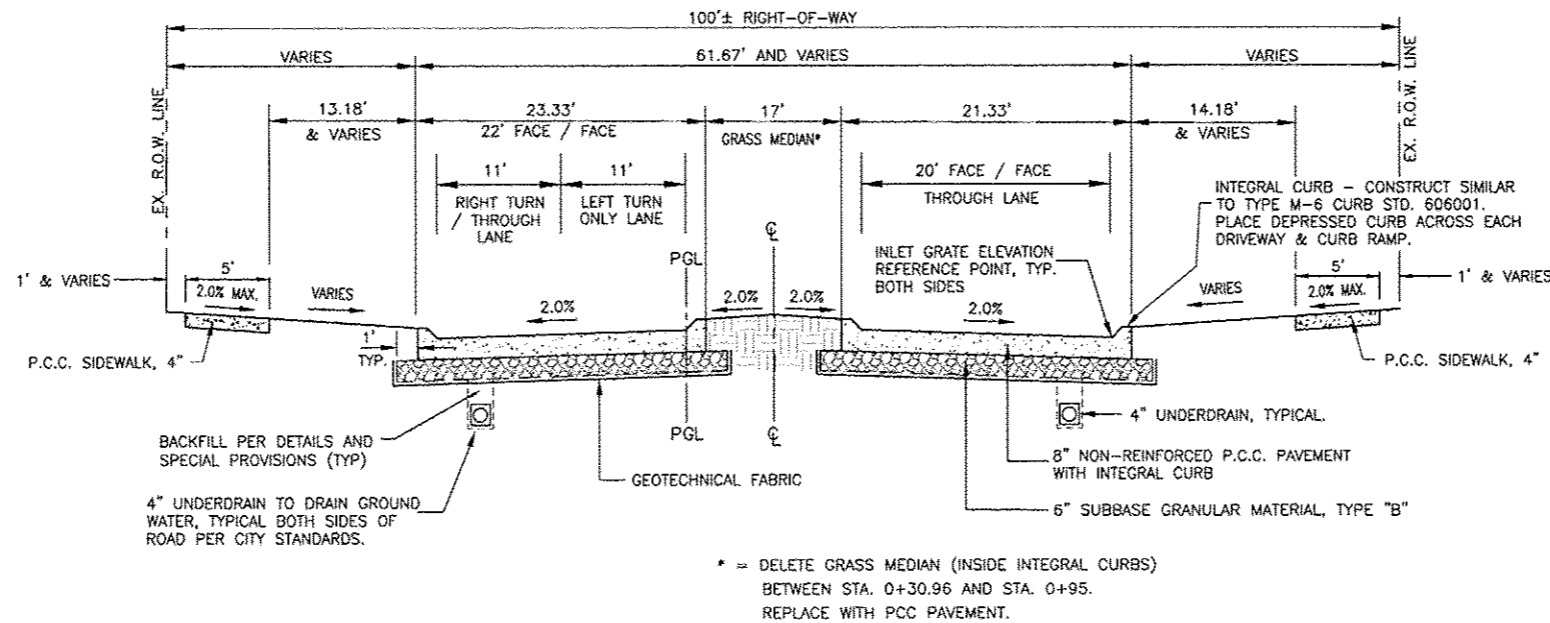


G:\2010MUNA\10M008-Geneseo-S. State St. SewerWaterDrawings\Plot\10M008 TYPICAL SECTIONS.dwg, 3/7/2013 9:30:05 AM, jefm

### PROPOSED TYPICAL SECTION STATE STREET STA. 0+30.96 TO STA. 1+35.65 PCC PAVEMENT WITH INTEGRAL CURB N.T.S.



#### STRUCTURAL DESIGN INFORMATION (RIGID PAVEMENT)

DESIGN PERIOD: 20 YEARS

STRUCTURAL DESIGN TRAFFIC: YEAR 2033  
 PV = 2961 SU = 158 MU = 31

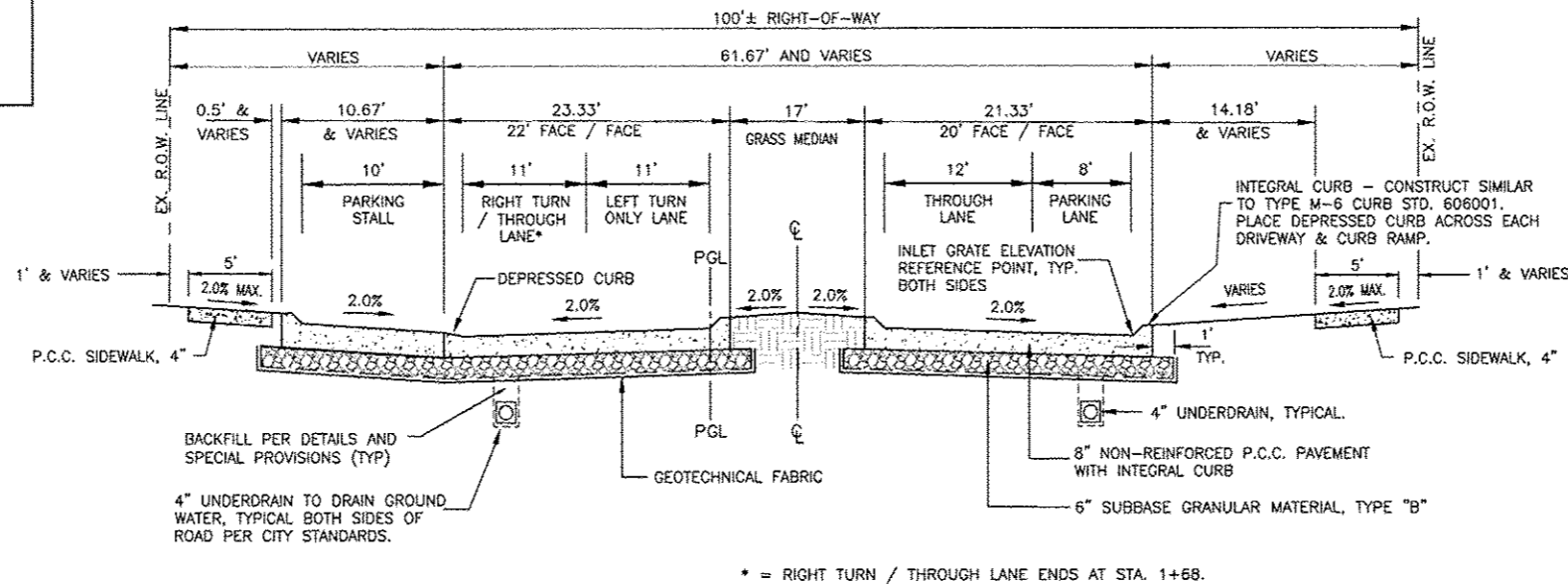
ROAD / STREET CLASSIFICATION: CLASS II

PERCENT OF STRUCTURAL DESIGN TRAFFIC IN DESIGN LANE:  
 PV = 50% SU = 50% MU = 50%

TRAFFIC FACTOR: TF = 0.39 PCC PAVEMENT = 8"

MINIMUM SUBGRADE SUPPORT RATING: FAIR

### PROPOSED TYPICAL SECTION STATE STREET STA. 1+35.65 TO STA. 1+68 PCC PAVEMENT WITH INTEGRAL CURB N.T.S.



NO.	REVISIONS DESCRIPTION	DATE

**Missman, inc.**  
Professional Engineers & Land Surveyors

Rock Island, IL • Bettendorf, IA • Rockford, IL • Sycamore, IL  
 (563) 768-7844 • (563) 344-0260 • (815) 965-6400 • (815) 885-3825  
 www.missman.com

STATE STREET RE-CONSTRUCTION  
GENESEO, ILLINOIS

TYPICAL SECTIONS - 2

Missman Project No: A10M008

File Name: A10M008 TYPICAL

© COPYRIGHT 2013 ALL RIGHTS RESERVED

Field Book No: #####

Drawn By: WKS

Checked By: JNM

Date: 11/19/2012