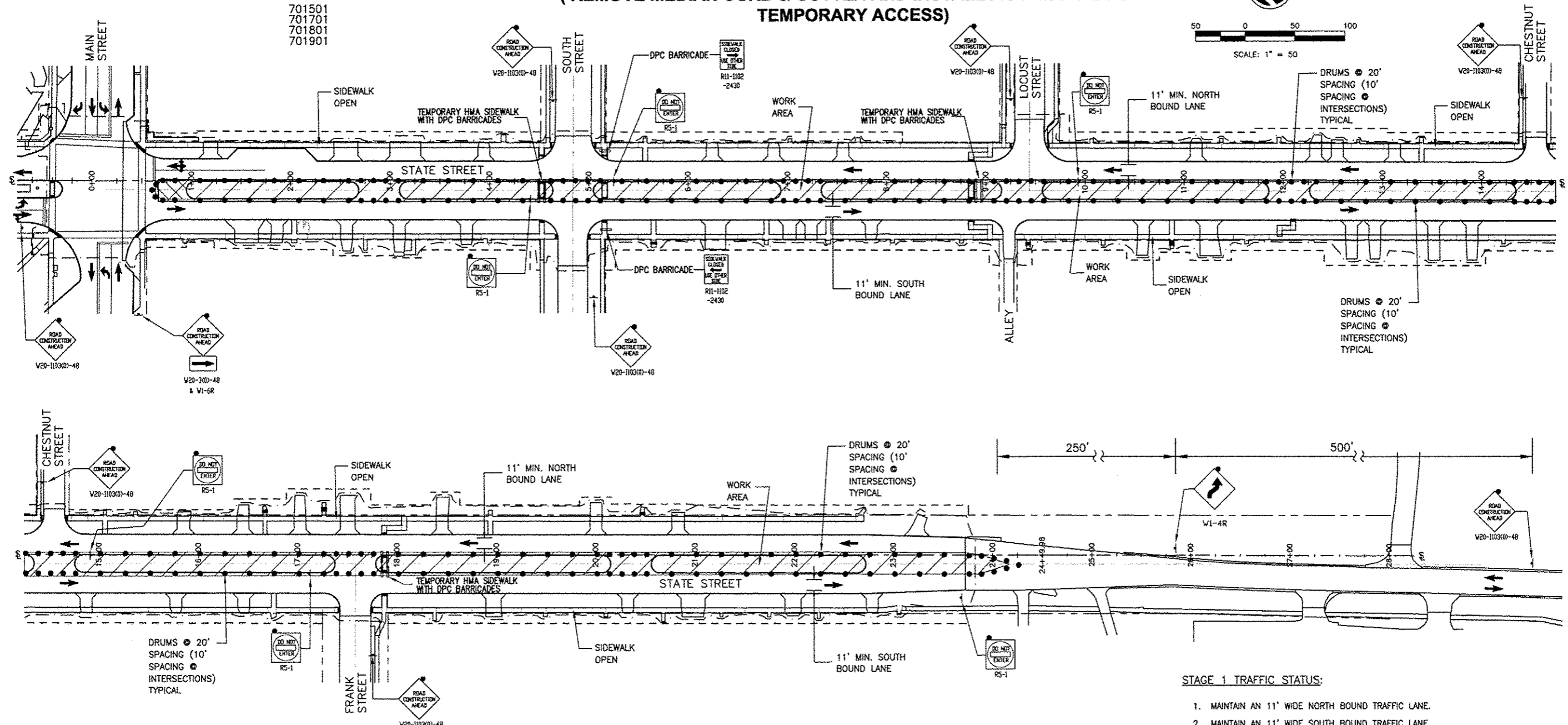
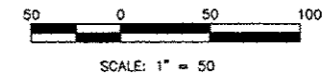


STATE STREET TRAFFIC CONTROL PLAN, STAGE 1 (REMOVE MEDIAN CURB & GUTTER AND INSTALL AGGREGATE FOR TEMPORARY ACCESS)

TRAFFIC STANDARDS:

- 701501
- 701701
- 701801
- 701901

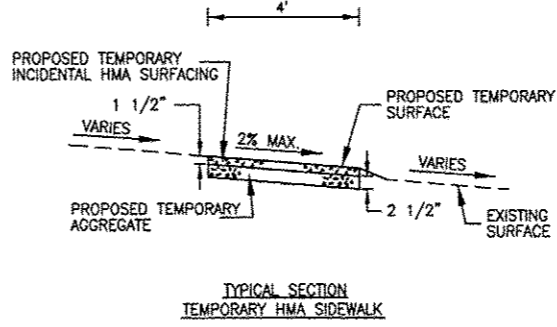
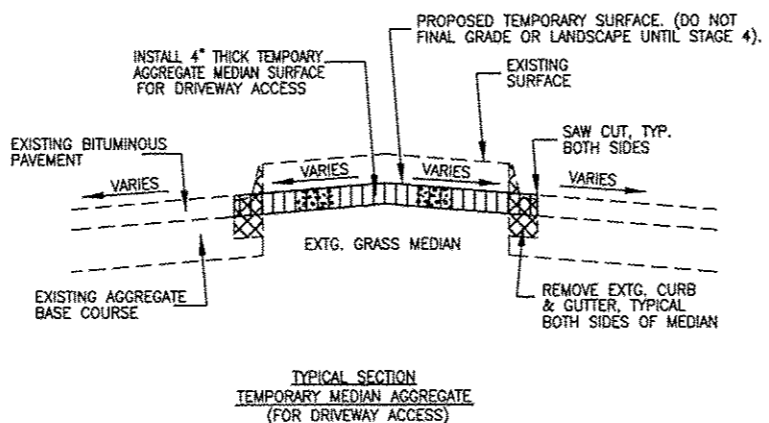


STAGE 1 TRAFFIC CONTROL NOTES:

1. SAW CUT AND REMOVE PAVEMENTS AS REQUIRED FOR THE REMOVAL / INSTALLATION OF THE UNDERGROUND UTILITIES WHILE MAINTAINING TRAFFIC, DRIVEWAYS AND SIDEWALKS. CONFORM TO HIGHWAY STANDARD 701501 AND HIGHWAY STANDARD 701701. PROVIDE AGGREGATE FOR TEMPORARY ACCESS AS NECESSARY.
2. MAINTAIN PEDESTRIAN ACCESS TO PROPERTY / BUSINESSES AS LONG AS POSSIBLE DURING INSTALLATION / REMOVAL OF UNDERGROUND UTILITIES. SAFETY FENCE SHALL BE ERECTED BETWEEN ALL OPEN PEDESTRIAN AREAS AND ADJACENT WORK AREAS.
3. CONFORM TO STANDARD 701801 FOR SIDEWALK CLOSURES. SIDEWALKS ON BOTH SIDES OF THE STREET SHALL NOT BE CLOSED AT THE SAME TIME. PEDESTRIAN ACCESS SHALL BE MAINTAINED AT ALL TIMES. INSTALL 4" THICK, 4' WIDE TEMPORARY HMA SIDEWALKS (PER TYPICAL SECTION) AS REQUIRED TO MAINTAIN ACCESS.
4. COORDINATE WITH LOCAL RESIDENTS AND BUSINESSES A MINIMUM OF 48 HOURS PRIOR TO RESTRICTING ACCESS TO DRIVEWAYS AND BUSINESS ENTRANCES.
5. PROVIDE A MINIMUM OF 2 WEEKS NOTICE TO BUSINESSES AND THE CITY OF GENESECO PRIOR TO FULL CLOSURE OF THE TRAVEL LANE OR SIDEWALK.
6. IF A PROPERTY AND / OR BUSINESS HAS TWO ACCESS DRIVEWAYS AS DETERMINED BY THE ENGINEER, THE REMOVAL AND REPLACEMENT OF THE TWO DRIVEWAYS SHALL NOT OCCUR SIMULTANEOUSLY. ONE PAVED DRIVEWAY SHALL BE OPEN TO THE PROPERTY AND / OR BUSINESS AT ALL TIMES.
7. ALL CHANGES IN ELEVATION (DROP OFFS) SHALL BE LESS THAN EIGHTEEN INCHES (18") WHEN THE CONTRACTOR IS NOT WORKING. WHEN WORKING, THE CONTRACTOR SHALL NOT ALLOW DROP OFFS OVER EIGHTEEN INCHES TO BE IN-PLACE LONGER THAN 48 HOURS.
8. PRIOR TO START OF WORK, CONTRACTOR TO SUBMIT TO THE ENGINEER AND CITY A DETAILED CONSTRUCTION SCHEDULE. WORK SHALL NOT START UNTIL CONSTRUCTION SCHEDULE IS APPROVED BY THE ENGINEER AND CITY.

STAGE 1 TRAFFIC STATUS:

1. MAINTAIN AN 11' WIDE NORTH BOUND TRAFFIC LANE.
2. MAINTAIN AN 11' WIDE SOUTH BOUND TRAFFIC LANE.
3. MAINTAIN EAST SIDEWALK FOR PEDESTRIAN TRAFFIC.
4. MAINTAIN WEST SIDEWALK FOR PEDESTRIAN TRAFFIC.
5. INSTALL 4" THICK, 4' WIDE TEMPORARY HMA SIDEWALKS TO MAINTAIN PEDESTRIAN TRAFFIC ACROSS THE WORK AREAS AT SOUTH STREET, LOCUST STREET, AND FRANK STREET.



LEGEND:

- WORK AREA
- TYPE III BARRICADE WITH FLASHERS
- DETECTABLE PEDESTRIAN CHANNELLIZING (DPC) BARRICADE
- BARRICADE OR DRUM WITH LIGHT
- SIGN WITH FLASHING LIGHT
- SIGN ON PORTABLE OR PERMANENT SUPPORT
- DRUM WITH LIGHT
- INDICATES DIRECTION OF TRAFFIC FLOW ONLY (NO PAVEMENT MARKING)

NO.	REVISIONS	DESCRIPTION	DATE

Missman, inc.
Professional Engineers & Land Surveyors

Rock Island, IL • (309) 788-7844
Bellefontaine, IL • (309) 344-0260
Rockford, IL • (815) 965-6400
Sycamore, IL • (815) 895-8325
www.missman.com

STATE STREET RE-CONSTRUCTION
GENESECO, ILLINOIS

TRAFFIC CONTROL PLAN - STAGE 1

Missman Project No:
A10M008

File Name:
A10M008 TRAFFIC CONTROL.dwg

© COPYRIGHT 2013
ALL RIGHTS RESERVED

Field Book No: ####

Drawn By: JNM

Checked By: JLM

Date: 11/19/2012

G:\2010\UNVA-10M008-Geneseo-S.State St. SewerWaterDrawings\PIVA10M008 TRAFFIC CONTROL.dwg, 3/7/2013 1:15:45 PM, jelfm